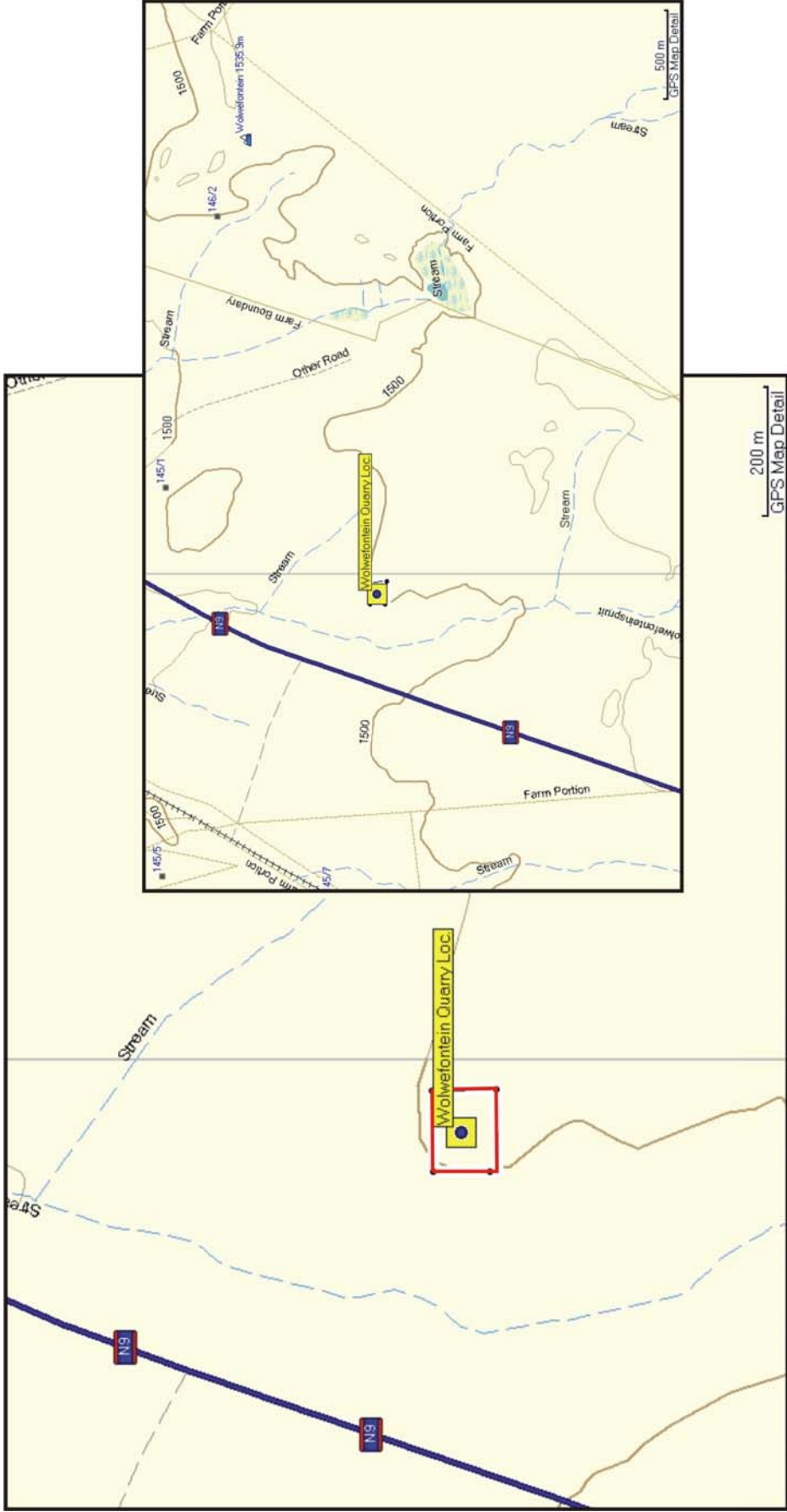


**PHASE 1 ARCHAEOLOGICAL IMPACT ASSESSMENT OF PROPOSED  
GRAVEL QUARRIES ON PORTIONS 1, 25 AND 17 OF HARTEBEEES HOEK  
187 AND PORTIONS 5 AND 1 OF NAAUWPOORT 1, NOUPOORT  
DISTRICT, NORTHERN CAPE PROVINCE, AND KOPPIESKRAAL 6  
NEAR MIDDELBURG, EASTERN CAPE PROVINCE.**

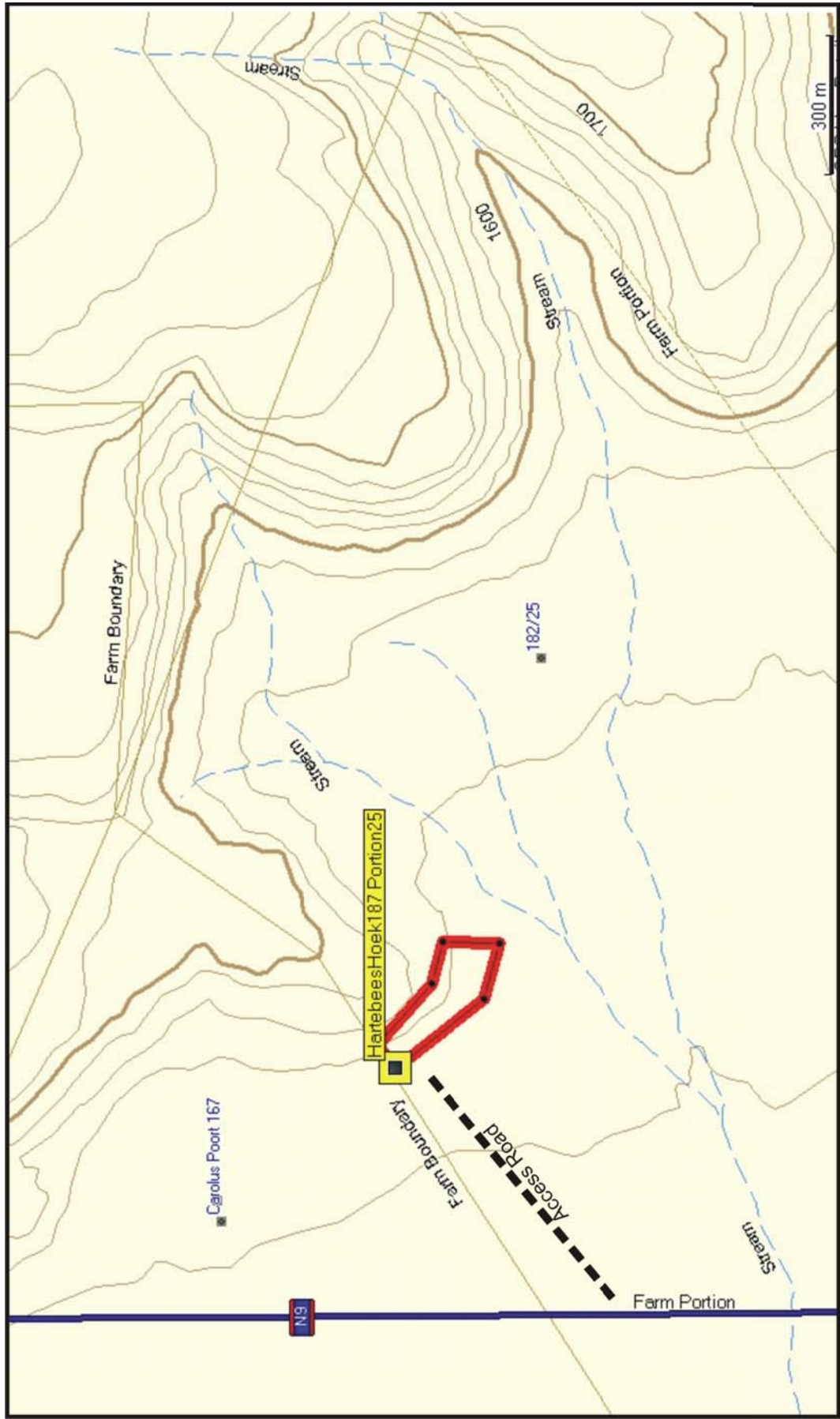
**ADDITIONAL FIGURES**



Locality map of the survey area on the farm Hartebees Hoek 187 Portion 1 (Borrow Pit 7) .



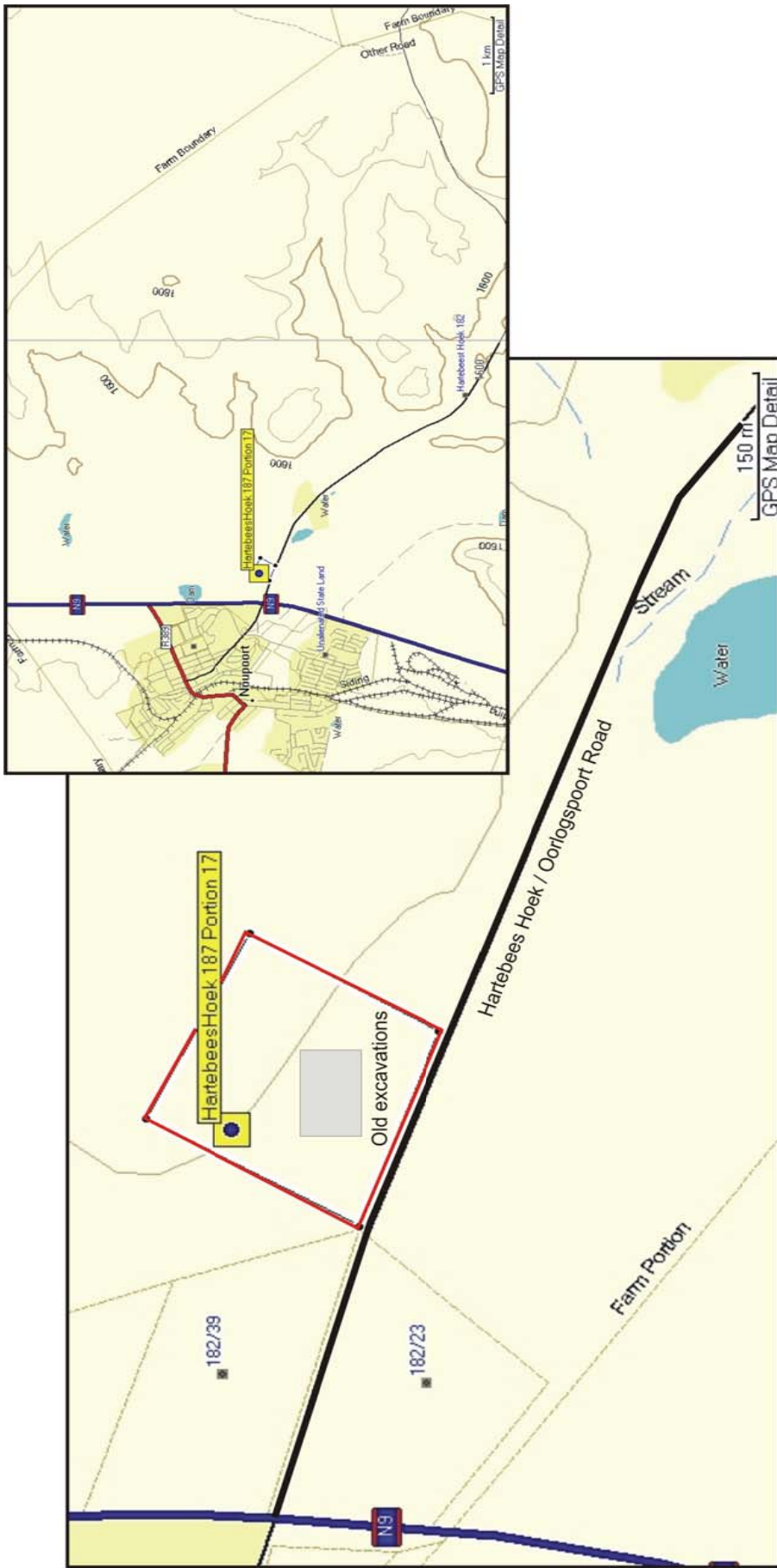
Variety of lithics commonly found at Hartebees Hoek 187 Portion 1 include cores, blade fragments and flaking debris.



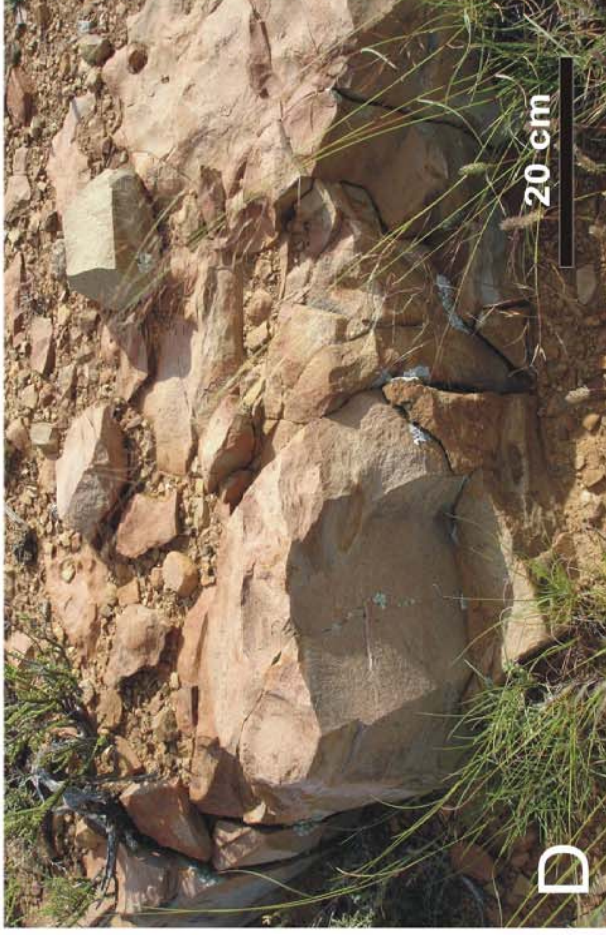
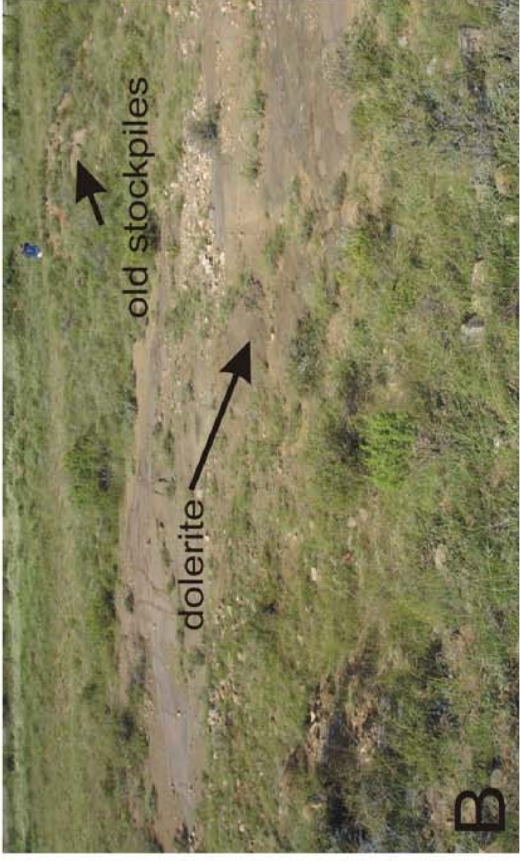
Locality map of Hartebees Hoek 187 Portion 25 (Borrow Pit 5).



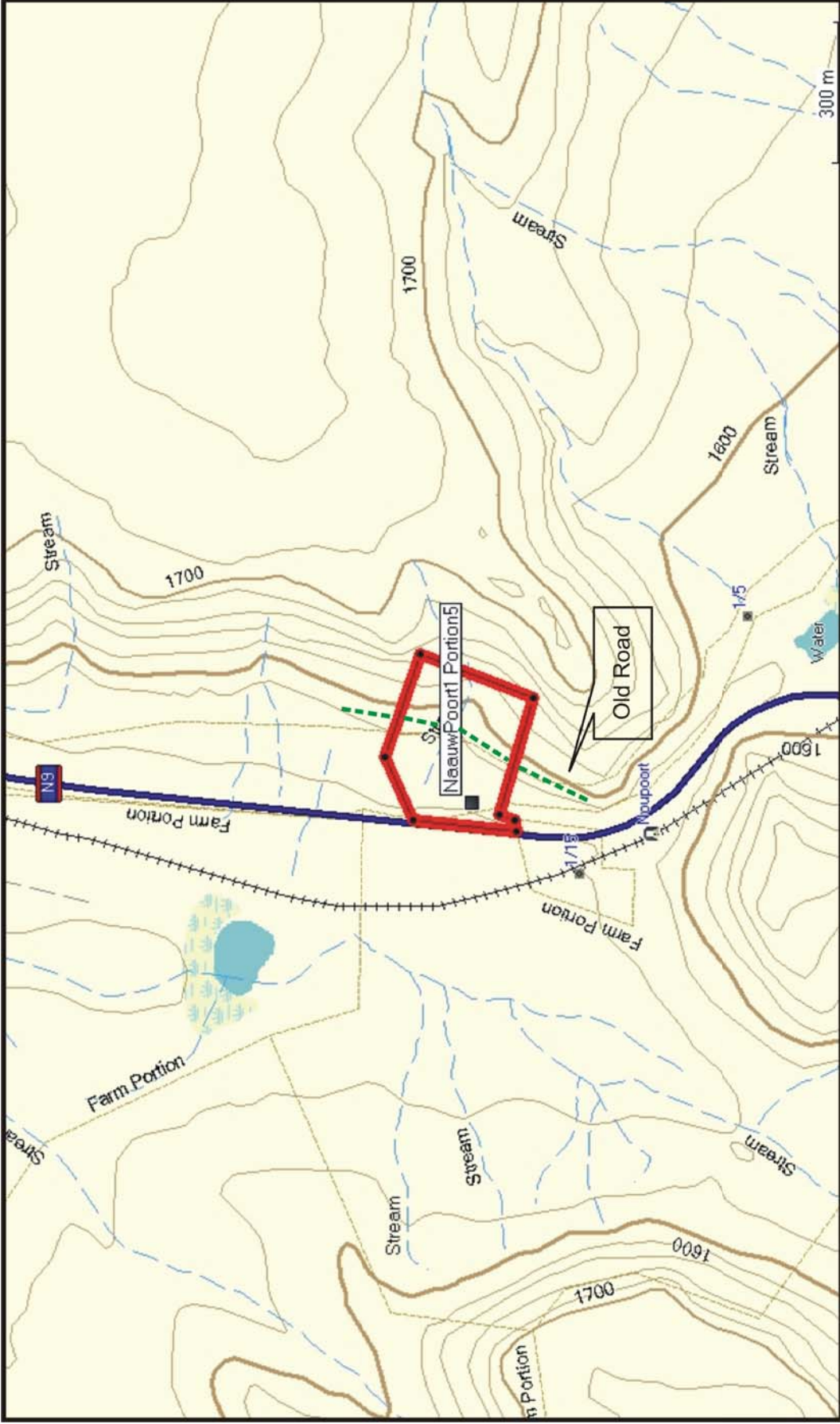
General view of Hartebees Hoek 187 Portion 25 (Borrow Pit 5). Looking south-southeast.



Locality map of survey area on portion 17 of Hartebees Hoek 187.



General view of the site at Hartebees Hoek 187 Portion 17. (A); old quarry excavations (B), dolerite bedrock (C) and fine-grained sandstone cappings (D).



Locality map of Naauw Poort 1 Portion 5 (Borrow Pit 3).





General view of Naauw Poort 1 Portion 5 (Borrow Pit 3). Looking east.



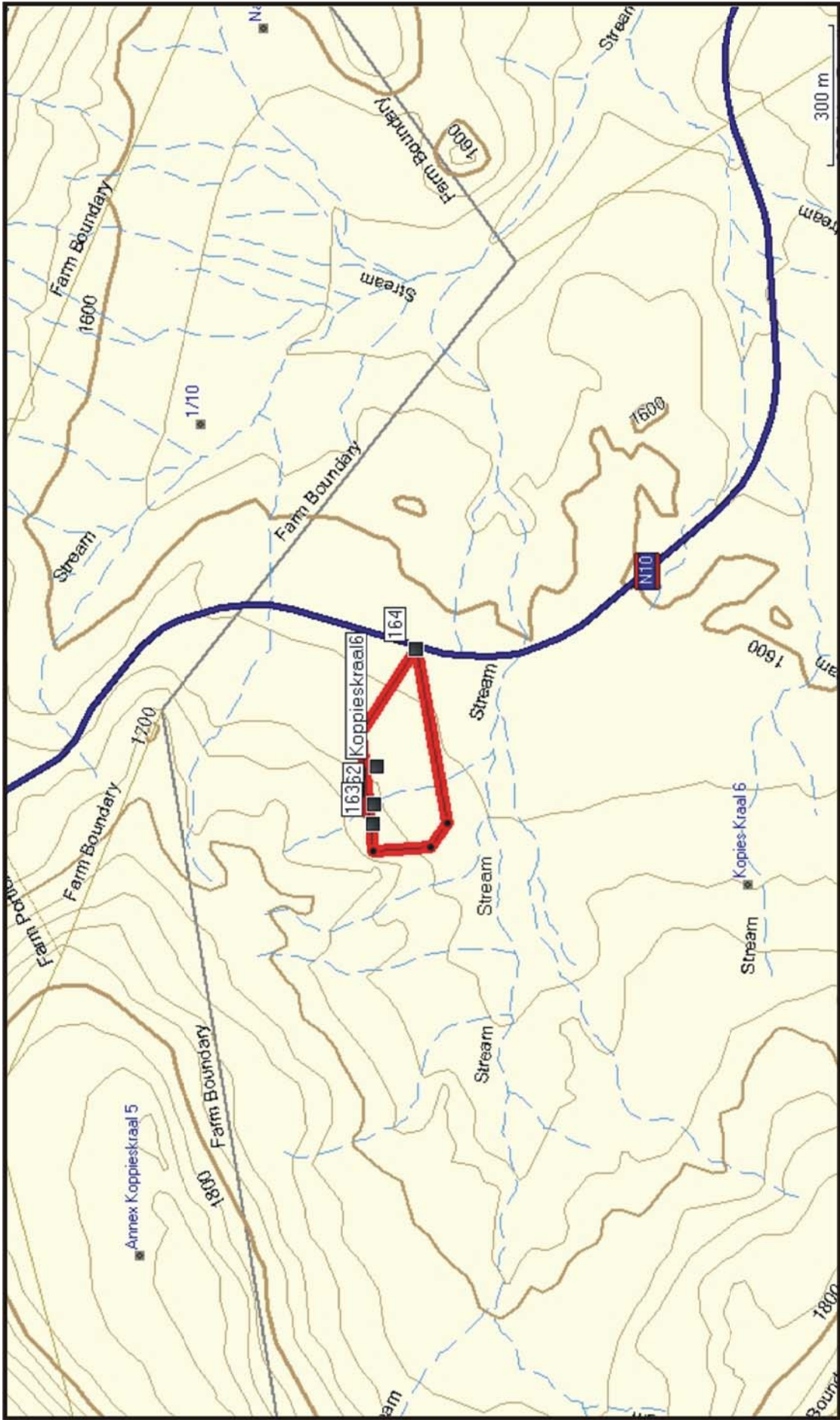
An old bridge from a disused road at Naauw Poort 1, Portion 5 (above). Building rubble includes imported gravel and stone (below).



Locality map of Naaupoort 1 Portion 1 (Borrow Pit 2).



General view of Naauw Poort 1 Portion 1 (Borrow Pit 2). Looking northeast.



Locality map of Koppieskraal 6 (Borrow Pit 1).



General view of Koppieskraal 6 (Borrow Pit 1). Looking southwest.