

Township Establishment on Naauwpoort 335-JS

eMalahleni Metropolitan Municipality, Nkangala District Municipality, Mpumalanga Province.

Farm: Remainder Portion 25, Portion 562, 563, 564, 565 Naauwpoort 335-JS

Fourie, H. Dr [heidicindy@yahoo.com](mailto:heidicindy@yahoo.com)

012 322 7632/079 940 6048

***Palaeontological Impact Assessment: Desktop Study***

Facilitated by: A. Pelsler

Archaeological Consulting cc,

833 B St Bernard Street, Garstfontein, 0081

Tel: 083 459 3091

2021/06/20

Ref: Pending

*Plant fossil - Irrigasie Formation (H. Fourie)*



## B. Executive summary

Outline of the development project: A. Pelsler Archaeological Consulting cc has facilitated the appointment of Dr H. Fourie, a palaeontologist, to undertake a Palaeontological Impact Assessment (PIA), Desktop Study of the suitability of the Township Establishment on Naauwpoort 335-JS in eMalahleni Metropolitan Municipality, Nkangala District Municipality, Mpumalanga Province on the Farm: Remainder Portion 25, Portion 562, 563, 564, 565 Naauwpoort 335-JS.

The applicant, Cuberman (Pty) Ltd intends to establish a Township south of Witbank.

The Project includes one locality Option (see Figure 2):

Option1: A polygon area outlined in red located south of the N4 National Road and the town of eMalahleni, it borders the dam medially, the R544 Road is to the west, a road runs east-west through the property, and it is surrounded by agricultural land. The approximate size of the site is 98,8442 hectares.

### Legal requirements:-

The **National Heritage Resources Act (Act No. 25 of 1999) (NHRA)** requires that all heritage resources, that is, all places or objects of aesthetic, architectural, historical, scientific, social, spiritual, linguistic or technological value or significance are protected. The Republic of South Africa (RSA) has a remarkably rich fossil record that stretches back in time for some 3.5 billion years and must be protected for its scientific value. Fossil heritage of national and international significance is found within all provinces of the RSA. South Africa's unique and non-renewable palaeontological heritage is protected in terms of the National Heritage Resources Act. According to this act, palaeontological resources may not be excavated, damaged, destroyed or otherwise impacted by any development without prior assessment and without a permit from the relevant heritage resources authority.

The main aim of the assessment process is to document resources in the development area and identify both the negative and positive impacts that the development brings to the receiving environment. The PIA therefore identifies palaeontological resources in the area to be developed and makes recommendations for protection or mitigation of these resources.

“palaeontological” means any fossilised remains or fossil trace of animals or plants which lived in the geological past, other than fossil fuels or fossiliferous rock intended for industrial use, and any site which contains such fossilised remains or traces.

For this study, resources such as geological maps, scientific literature, institutional fossil collections, satellite images, aerial maps and topographical maps were used. It provides an assessment of the observed or inferred palaeontological heritage within the study area, with recommendations (if any) for further specialist palaeontological input where this is considered necessary.

A Palaeontological Impact Assessment is generally warranted where rock units of **LOW** to **VERY HIGH** palaeontological sensitivity are concerned, levels of bedrock exposure within the study area are adequate; large scale projects with high potential heritage impact are planned; and where the distribution and nature of fossil remains in the proposed area is unknown. The specialist will inform whether further monitoring and mitigation are necessary.

Types and ranges of heritage resources as outlined in Section 3 of the National Heritage Resources Act (Act No.25 of 1999):

(i) (i) objects recovered from the soil or waters of South Africa, including archaeological and palaeontological objects and material, meteorites and rare geological specimens.

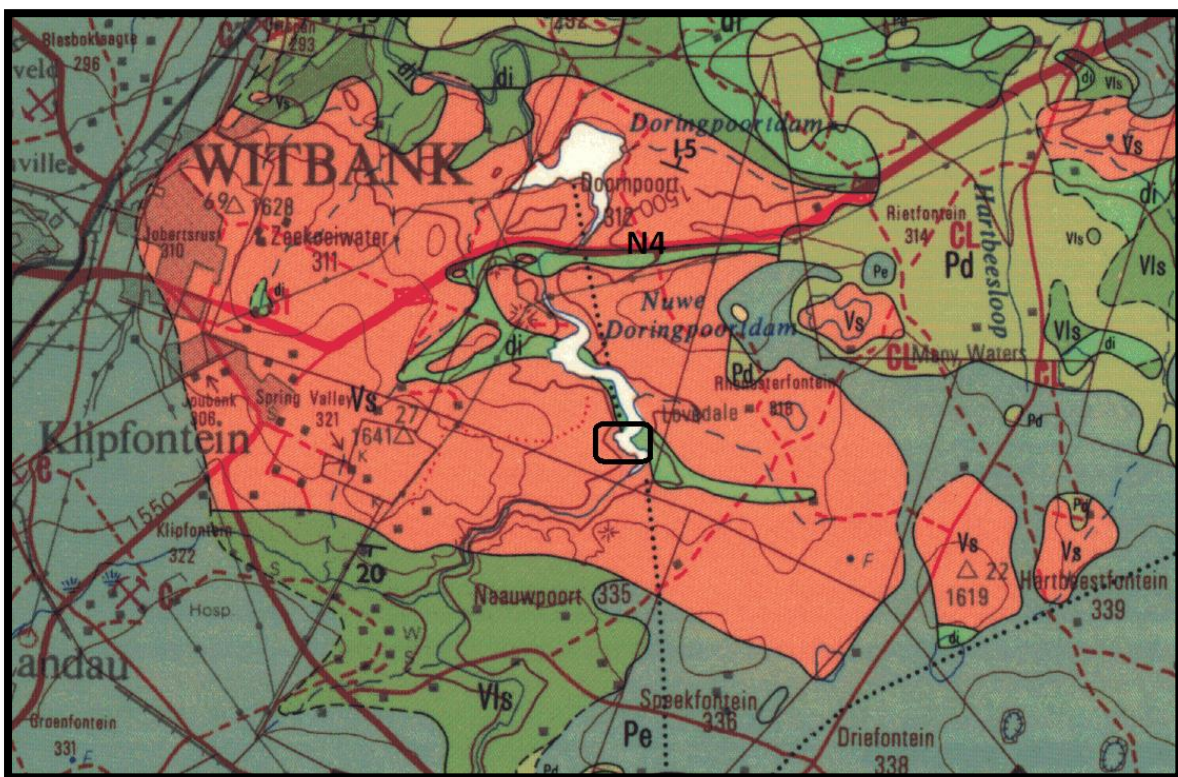
This report adheres to the guidelines of Section 38 (1) of the National Heritage Resources Act (Act No. 25 of 1999).

Subject to the provisions of subsections (7), (8) and (9), any person who intends to undertake a development categorised as (a) the construction of a road, wall, power line, pipeline, canal or other similar form of linear development or barrier exceeding 300 m in length; (b) the construction of a bridge or similar structure exceeding 50 m in length; (c) any development or other activity which will change the character of a site (see Section 38); (d) the re-zoning of a site exceeding 10 000 m<sup>2</sup> (1 ha) in extent; (e) or any other category of development provided for in regulations by SAHRA or a PHRA authority.

This report (1c) aims to provide comment and recommendations on the potential impacts that the proposed development could have on the fossil heritage of the area and to state if any mitigation or conservation measures are necessary.

Outline of the geology and the palaeontology:

The geology was obtained from map 1:100 000, Geology of the Republic of South Africa (Visser 1984), 2528 Pretoria (Walraven 1978), 1:250 000 geological maps.



**Figure:** The geology of the development area.

*Legend to Figure and short explanation.*

di – Diabase (green). From Vaalian to post-Mokolian.

pe – Shale, shaly sandstone, grit, sandstone, conglomerate and coal in places near base and top, oil shale beds (grey). Vryheid Formation, Ecca Group, Karoo Supergroup. Permian.

vls – Shale, sandstone, conglomerate; volcanic rocks (olive green). Loskop Formation, Transvaal Supergroup. Vaalian.

vs – Porphyritic rhyolite with interbedded mudstone and sandstone (amber). Selons River Formation, Transvaal Supergroup. Vaalian.

..... – (black) Lineament (Possible dyke).

--f-- Fault.

⊥20° - Strike and dip.

□ – Approximate position of development (blocked in black).

The Selons River Formation has either a sandstone or a quartzite at its base and mainly consists of red rhyolite. It (Selons River) was further subdivided into the lower Doornkloof Felsite Member and an upper Klipnek Felsite Member (Kent 1980, Visser 1989) and west of Warmbath (Bela Bela) it is again subdivided into two units, the Kwaggasnek Formation and the Schrikkloof Formation.

*Palaeontology* – Fossils in South Africa mainly occur in rocks of sedimentary nature and not in rocks from igneous or metamorphic nature. Therefore, if there is the presence of Karoo Supergroup strata the palaeontological sensitivity can generally be **LOW** to **VERY HIGH**, and here locally **VERY LOW** for the Selonsrivier Formation (SG 2.2 SAHRA APMHOB, 2012).

The Ecca Group, overlying Vryheid Formation may contain fossils of diverse non-marine trace, *Glossopteris* flora, mesosaurid reptiles, palaeoniscid fish, marine invertebrates, insects, and crustaceans (Johnson 2009). *Glossopteris* trees rapidly colonised the large deltas along the northern margin of the Karoo Sea. Dead vegetation accumulated faster than it could decay, and thick accumulations of peat formed, which were ultimately converted to coal. It is only in the northern part of the Karoo Basin that the glossopterids and cordaitales, ferns, clubmosses and horsetails thrived (McCarthy and Rubidge 2005).

The Selons River Formation is unfossiliferous.

Summary of findings (1d): The PIA Desktop Study was undertaken in June 2021 in the winter in dry, windy and mild conditions during the official covid-19 Level 2 lockdown. As this is a desktop study the season and time have no influence and the following is reported:

The Project includes one locality Option (see Figure 2) present on the Selons River Formation:

Option1: A polygon area outlined in red located south of the N4 National Road and the town of eMalahleni, it borders the dam medially, the R544 Road is to the west, a road runs east-west through the property, and it is surrounded by agricultural land. The approximate size of the site is 98,8442 hectares.

Only one locality Option is presented and is possible. It is unlikely that fossils will be present.

#### Recommendation:

The potential impact of the development on fossil heritage is **VERY LOW** and therefore a field survey is not necessary for this development (according to SAHRA protocol). A Phase 1 Palaeontological Impact Assessment: Field Study is only recommended if fossils or a fossiliferous formation are found during the development.

Concerns/threats **(1k,l,m)** to be added to EMP:

1. Threats to the National Heritage are earth moving equipment/machinery (for example haul trucks, front end loaders, excavators, graders, dozers) during construction, the sealing-in, disturbance, damage or destruction of the fossils by development, vehicle traffic, and human disturbance.
2. Special care must be taken during the digging, drilling, blasting and excavating of foundations, trenches, channels and footings and removal of overburden not to intrude fossiliferous layers, only if infrastructure is constructed.

The recommendations are **(1g)**:

1. Mitigation will be needed if fossils are found during the construction, but it is unlikely.

2. No consultation with parties was necessary. The Environmental Control Officer must familiarise him- or herself with the surrounding formations present and its fossils.
3. The development may go ahead.
4. The EMPr already covers the conservation of heritage and palaeontological material that may be exposed during construction activities. For a chance fossil find, the protocol is to immediately cease all construction activities, construct a 30 m no-go barrier, and contact SAHRA for further investigation.

Stakeholders: Developer – Cuberman (Pty) Ltd.

Environmental – Anton Pelsler Archaeological Consulting cc, 338 B St Bernard Street, Garsfontein, 0081. Tel. 083 459 3091.

Landowner – Cuberman (Pty) Ltd.

### **C. Table of Contents**

A. Title page	1
B. Executive Summary	2
C. Table of Contents	5
D. Background Information on the project	5
E. Description of the Property or Affected Environment	7
F. Description of the Geological Setting	8
G. Background to Palaeontology of the area	10
H. Description of the Methodology	12
I. Description of significant fossil occurrences	14
J. Recommendation	15
K. Conclusions	15
L. Bibliography	16
Declaration	16
Appendix 1: Examples of Vryheid Formation fossils	18
Appendix 2: Protocol for finds and Management plan	18
Appendix 3: Table	21

### **D. Background information on the project**

#### Report

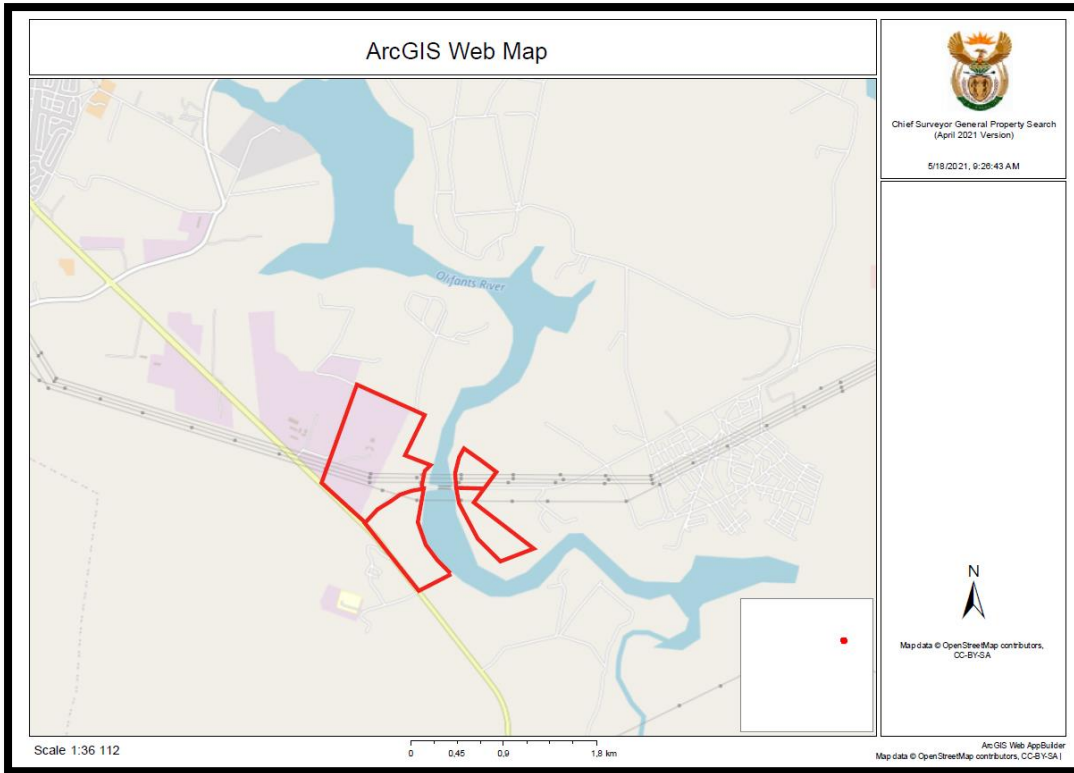
This report is part of the environmental impact assessment process under the National Environmental Management Act, as amended (Act No. 107 of 1998) (NEMA) and includes Appendix 6 (GN R326 of 7 April 2017) of the Environmental Impact Assessment Regulations (see Appendix 2). It also is in compliance with The Minimum Standards for Palaeontological Components of Heritage Impact Assessment Reports, SAHRA, APMHOB, Guidelines 2012, Pg 1-15 (2).

#### Outline of development

This report discusses and aims to provide the developer with information regarding the location of palaeontological material that will be impacted by the development. In the pre-construction phase, it is necessary for the developer to apply for the relevant permit from the South African Heritage Resources Agency (SAHRA / PHRA).

The applicant, Cuberman (Pty) Ltd intends to establish a township south of Witbank.





**Figure 1:** Locality map with portions (Pelser).

**Related Infrastructure:**

1. Buildings,
2. Private Roads,
3. Power lines,
4. Sewage pipelines,
5. Parking areas.

The site is located north of the already established Naauwpoort industrial area. It is the intention of the developer to create a township with erven which is secure and easily accessible within Naauwpoort.

The Project includes one locality Option (see Figure 2) present close to the Witbank and on the R544 Road: Option1: A polygon area outlined in red located south of the N4 National Road and the town of eMalahleni, it borders the dam medially, the R544 Road is to the west, a road runs east-west through the property, and it is surrounded by agricultural land. The approximate size of the site is 98,8442 hectares.

Rezoning/ and or subdivision of land: Agriculture to Residential.

Name of Developer and Consultant: Cuberman (Pty) Ltd and Anton Pelsa Archaeological Consulting cc.

Terms of reference: Dr H. Fourie is a palaeontologist commissioned to do a palaeontological impact assessment: field study to ascertain if any palaeontological sensitive material is present in the development area. This study will advise on the impact on fossil heritage mitigation or conservation necessary, if any.

Short Curriculum vitae (1ai,aii): Dr Fourie obtained a Ph.D from the Bernard Price Institute for Palaeontological Research (now ESI), University of the Witwatersrand. Her undergraduate degree is in Geology and Zoology. She specialises in vertebrate morphology and function concentrating on the Therapsid Therocephalia. At present she is curator of a large fossil invertebrate collection, Therapsids, dinosaurs, amphibia, fish, reptiles, and plants at

Ditsong: National Museum of Natural History. For the past 14 years she carried out field work in the North West, Western Cape, Northern Cape, Eastern Cape, Limpopo, Mpumalanga, Gauteng and Free State Provinces. Dr Fourie has been employed at the Ditsong: National Museum of Natural History in Pretoria (formerly Transvaal Museum) for 26 years.

Legislative requirements: South African Heritage Resources Agency (SAHRA) for issue of permits if necessary. National Heritage Resources Act (Act No. 25 of 1999). An electronic copy of this report must be supplied to SAHRA.

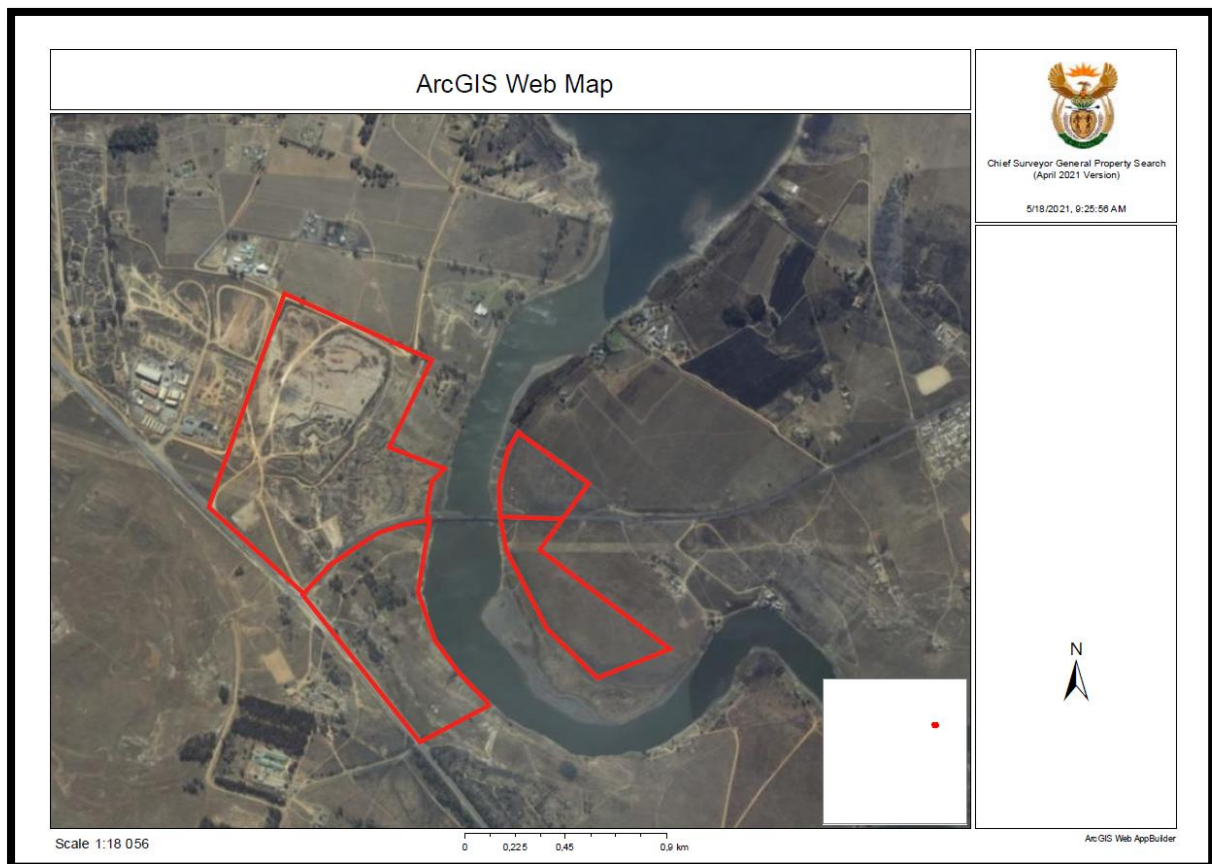
## E. Description of property or affected environment

### Location and depth:

The suitability of the proposed Township Establishment on Naauwpoort 335-JS will be situated in eMalahleni Metropolitan Municipality, Nkangala District Municipality, Mpumalanga Province on the Farm: Remainder Portion 25, Portion 562, 563, 564, 565 Naauwpoort 335-JS.

Depth is determined by the related infrastructure to be developed and the thickness of the formation in the development area as well as depth of the foundations, footings and channels to be developed. Details of the location and distribution of all significant fossil sites or key fossiliferous rock units are often difficult to determine due to thick topsoil, subsoil, overburden and alluvium. Depth of the overburden may vary a lot. Geological maps do not provide depth or superficial cover, it only provides mappable surface outcrops. The depth can be verified with test pit results or drill cores. The Selons River Formation reaches a thickness of 6000 m.

The Project includes one locality Option (see Figure 2):



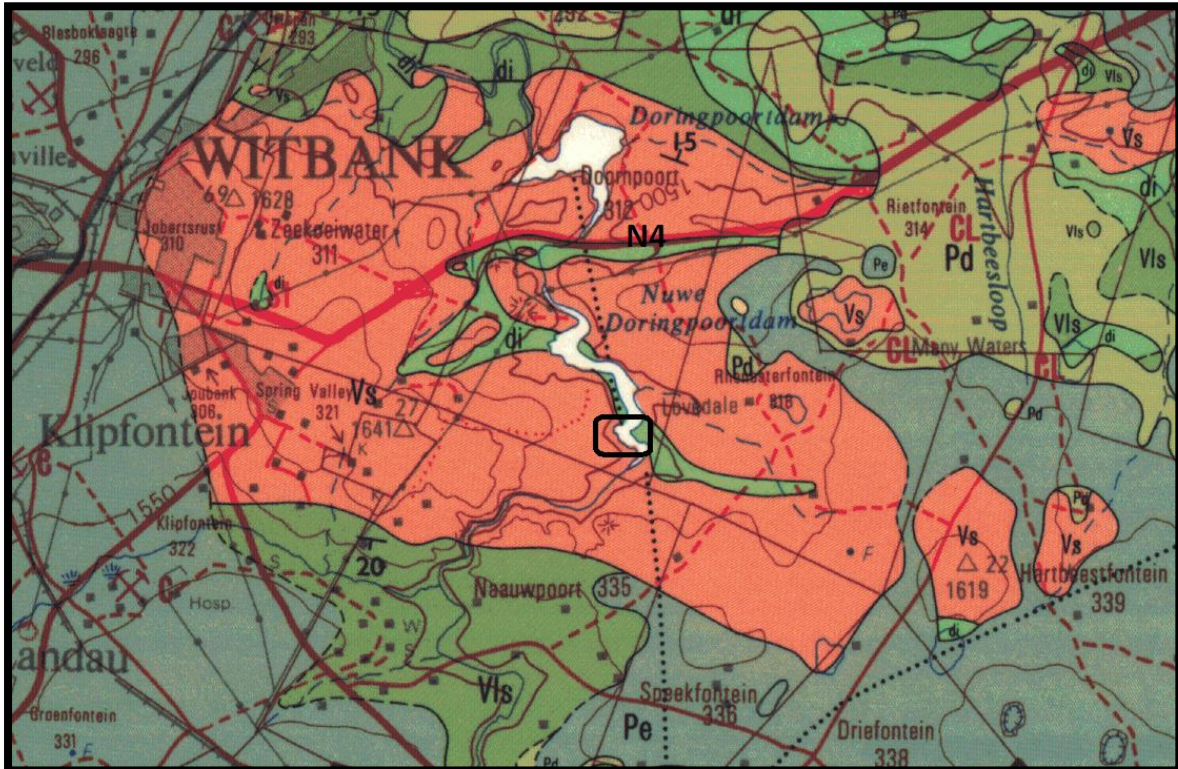
**Figure 2:** Google Earth image showing location (Pelsler).

The site is mostly overlain by the Karoo Supergroup formations.

## F. Description of the Geological Setting

### Description of the rock units:

Large areas of the southern African continent are covered by the Karoo Supergroup (Figure 3). It covers older geological formations with an almost horizontal blanket. Several basins are present with the main basin in the central part of south Africa and several smaller basins towards Lebombo, Springbok Flats and Soutpansberg. An estimated age is 150 – 180 Ma. And a maximum thickness of 7000 m is reached in the south. Three formations overlie the Beaufort Group, they are the Molteno, Elliot and Clarens Formations. The Elliot Formation is also known as the Red Beds and the old Cave Sandstone is known as the Clarens Formation. At the top is the Drakensberg Basalt Formation with its pillow lavas, pyroclasts, etc. (Kent 1980, Snyman 1996). The Beaufort Group is underlain by the Ecca Group which lies on the Dwyka Group.



**Figure 3:** Geology of the development area (1h).

*Legend to Map and short explanation.*

di – Diabase (green). From Vaalian to post-Mokolian.

Pe – Shale, shaly sandstone, grit, sandstone, conglomerate and coal in places near base and top, oil shale beds (grey). Vryheid Formation, Ecca Group, Karoo Supergroup. Permian.

Vs – Porphyritic rhyolite with interbedded mudstone and sandstone (amber). Selons River Formation, Transvaal Supergroup. Vaalian.

..... – (black) Lineament (Possible dyke).

--f-- Fault.

⊥25° - Strike and dip.

□ – Approximate position of development (blocked in black).

### Mining Activities on Figure:

C – Coal.

Mining past and present has an influence on the project.



Dolerite dykes (Jd) occur throughout the Karoo Supergroup. Structural geological features such as dykes and faults can have a measurable influence on ground water flow and mass transport.

The Eccca Group is early to mid-Permian (545-250 Ma) in age. Sediments of the Eccca group are lacustrine and marine to fluvio-deltaic (Snyman 1996). The Eccca group is known for its coal (mainly the Vryheid Formation) (five coal seams) and uranium. Coalfields formed due to the accumulation of plant material in shallow and large swampy deltas (see Appendix 1). The Eccca Group conformably overlies the Dwyka Group and is conformably overlain by the Beaufort Group, Karoo Supergroup. It consists essentially of mudrock (shale), but sandstone-rich units occur towards the margins of the present main Karoo basin in the south, west and north-east, with coal seams also being present in the north-east (Kent 1980, Johnson 2009).

The Vryheid Formation, **here surrounding the Selons River Formation**, is named after the type area of Vryheid-Volksrust. In the north-eastern part of the basin the Vryheid Formation thins and eventually wedges out towards the south, southwest and west with increasing distance from its source area to the east and northeast (Johnson 2009). The Vryheid Formation consists essentially of sandstone, shale, and subordinate coal beds, and has a maximum total thickness of 500 m. It forms part of the Middle Eccca (Kent 1980). This formation has the largest coal reserves in South Africa. The pro-delta sediments are characterised by trace and plants fossils (Snyman 1996).

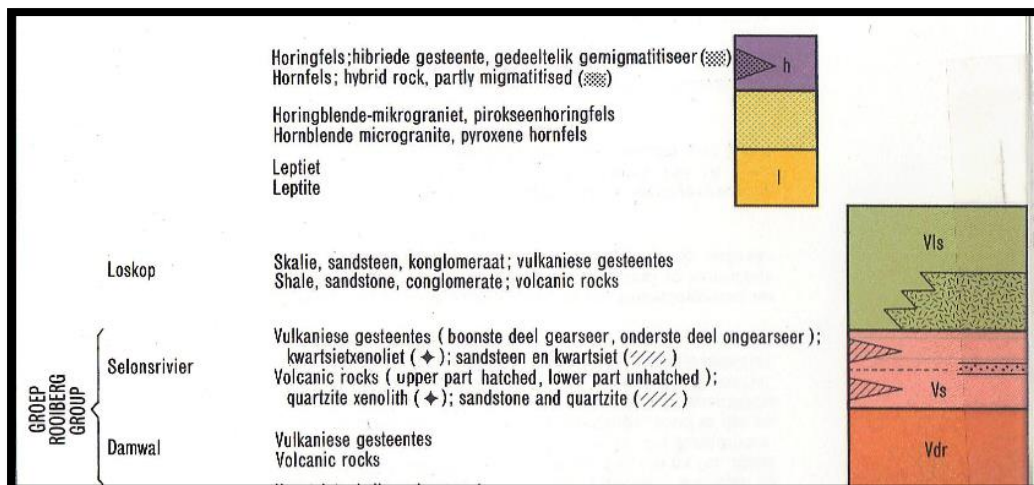


Figure 4: Lithostratigraphic column of the development area (Pretoria map).

The Transvaal Supergroup fills an east-west elongated basin in the south-central part of the old Transvaal (now North – West, Gauteng and Mpumalanga) as far south as Potchefstroom. It is Vaalian in age, approximately 2600 Ma to 2100 Ma. A maximum thickness of the Transvaal Supergroup reaches 2000 m in the north-eastern section. The east-west elongated basin is filled with clastic, volcanic and chemical sedimentary rocks. Three groups based on lithological differences have been established: they are the Rooiberg, Pretoria and Chuniespoort Groups as well as other smaller groups such as the Groblersdal Group, Buffelsfontein Group, Wolkberg Group and the Black Reef Formation (Kent 1980, Snyman 1996). It is the Bushveld Complex that is responsible for the tilting of the Transvaal sediments and the heat of its intrusion having created andalusite crystals (Norman and Whitfield 2006). This Supergroup is underlain by the Ventersdorp, Witwatersrand and Pongola Supergroups, and the Dominion Group. Three prominent ridges are present from the oldest to the youngest, the Time Ball Hill, Daspoort and Magaliesberg Formations (Norman and Whitfield 2006).

The Loskop Formation outcrops in the Loskop dam-Middelburg area as a continuous unit. It follows on the lavas of the Selons River Formation. The Wilgerivier Formation (Waterberg Group) is above it. A thickness of 1000 m is

attained (Visser 1989). This formation was previously included as the uppermost unit in the Pretoria Group, but is now regarded as a proto-Waterberg unit together with the Rust de Winter Formation (Groenewald and Groenewald 2014).

The Rooiberg Group is a 2500-6000m thick succession of feldspathic quartzites, arkoses and shales, with interbedded volcanics and felsites. It consists of two formations, the lower Damwal (Vdr) and the upper Selons River (Vs), restricted in its distribution to the central part of the basin (Kent 1980, Snyman 1996). The Selons River Formation has either a sandstone or a quartzite at its base and mainly consists of red rhyolite. It (Selons River) was further subdivided into the lower Doornkloof Felsite Member and an upper Klipnek Felsite Member (Kent 1980, Visser 1989) and west of Warmbath (Bela Bela) it is again subdivided into two units, the Kwaggasnek Formation and the Schrikkloof Formation. A layer of amygdaloidal rhyolite is present close to the top of the Kwaggasnek Formation. It rests on the Smelterskop sediments at Rooiberg and is intruded by Nebo granite. The Schrikkloof Formation in the Nylstroom area is conformably overlain by sediments from the Waterberg Group in an ash-flow sheet. Together with the Kwaggasnek Formation it reaches thicknesses of 6000 m as is equivalent to the Selonsrivier Formation. This group has an estimated age of 2,150 Ma (Visser 1989).

### G. Background to Palaeontology of the area

Summary: When rock units of moderate to very high palaeontological sensitivity are present within the development footprint, a desk top and or field scoping (survey) study by a professional palaeontologist is usually warranted. The main purpose of a field scoping (survey) study would be to identify any areas within the development footprint where specialist palaeontological mitigation during the construction phase may be required (SG 2.2 SAHRA AMPHOB, 2012).

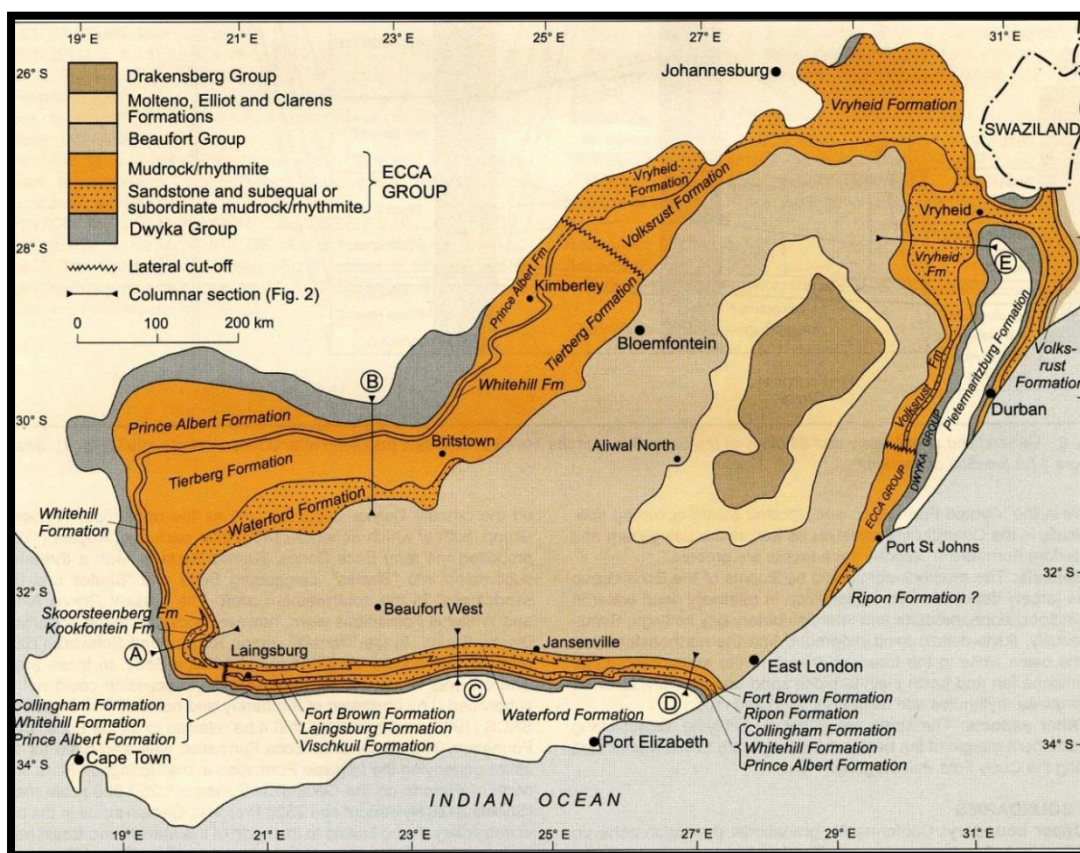


Figure 5: Extent of the Karoo Supergroup (Johnson 2009).

The rocks of the Karoo Supergroup are internationally acclaimed for their richness and diversity of fossils. The rocks of the Beaufort Group of South Africa cover approximately one-third of the land surface and have yielded an abundance of well-preserved therapsids and other tetrapods which have been used to subdivide this Group into eight faunal Assemblage Zones.

The Ecca Group, Vryheid Formation may contain fossils of diverse non-marine trace, *Glossopteris* flora, mesosaurid reptiles, palaeoniscid fish, marine invertebrates, insects, and crustaceans (Johnson 2009). *Glossopteris* trees rapidly colonised the large deltas along the northern margin of the Karoo Sea. Dead vegetation accumulated faster than it could decay, and thick accumulations of peat formed, which were ultimately converted to coal. It is only in the northern part of the Karoo Basin that the glossopterids and cordaitales, ferns, clubmosses and horsetails thrived (McCarthy and Rubidge 2005).

The *Glossopteris* flora is thought to have been the major contributor to the coal beds of the Ecca. These are found in Karoo-age rocks across Africa, South America, Antarctica, Australia and India. This was one of the early clues to the theory of a former unified Gondwana landmass (Norman and Whitfield 2006).

The Selons River Formation is unfossiliferous.

One of the formations in the development area, the Loskop Formation, may contain fossils. Nixon *et al.* (1988) described the black shales south-west of Potchefstroom as consisting of overlapping laminated basal mounds which are stromatolitic as well as spheroidal possible planktonic fossil algae. These can range in size from 3.5 - 17 mm in height and up to 10 mm in diameter and can be present in the development area.

Fossils in South Africa mainly occur in rocks of sedimentary nature and not in rocks from igneous or metamorphic nature. Therefore, if there is the presence of Karoo Supergroup strata the palaeontological sensitivity is generally **LOW** to **VERY HIGH**.

**Table 1:** Taken from Palaeotechnical Report (Groenewald 2012) (1cA).

<p>Light grey coarse- to fine-grained sandstone and siltstone. Dark coloured siltstone due to presence of carbon enrichment and coal beds</p>	<p>Abundant plant fossils of <i>Glossopteris</i> and other plants. Trace fossils. The reptile <i>Mesosaurus</i> has been found in the southern part of the Karoo Basin</p>
---	--

WATERBERG		Wilgerivier (Mw)	Continental "red beds" - predominantly braided stream deposits (sandstones, conglomerates with minor mudrocks), also beach, tidal flat, lacustrine, aeolian and possible marine shelf sediments Early to Mid Proterozoic (Mokolian) c. 2 to 1.7 Ga	Earliest known terrestrial cyanobacterial mats recorded from playa lake deposits of the Makgabeng Fm (Waterberg Group) (1.8 Ga) in Limpopo and might also occur in Gauteng	Early Proterozoic "red beds" provide evidence for the development of an oxygenated atmosphere after c. 2Ga Vrw, Vls previously included within the uppermost Pretoria Group but are now regarded as proto-Waterberg units.
		Rust de Winter (Vrw) Loskop (Vls) h; l	Shale, sandstone, conglomerate and volcanic rocks		
		Vdi(Vw), Vbg, Vdi; V-di, Vbd (Ve); Vhy; Vq; Vbk; Vsg; Vkb	Igneous intrusions	No fossils recorded. E-W outcrop between Johannesburg Pretoria	
ROOIBERG		Selons River(Vs; Vse) (now renamed subdivided into Kwaggasnek Schrikloof Fms)	Volcanics plus minor, thin but extensive horizons of metamorphosed sediments (quartzites, sandstones, mudrocks, cherts), mainly of fluvial origin.  Volcanics are related to intrusives of the underlying Bushveld Magmatic Province  2.06 Ga Vaalian	Fossils within minor sedimentary units unlikely because of fluvial depositional setting and subsequent metamorphism.	Possible evidence for a catastrophic event at the base of Rooiberg Group (basin floor collapse, slumping, volcanism) Selons River and Kwaggasnek units previously included within upper Pretoria Group by some geologists
		Damwal (Vdr)			

**Table 2: Criteria used (Fossil Heritage Layer Browser/SAHRA) (1cB):**

Rock Unit	Significance/vulnerability	Recommended Action
Vryheid Formation	Very High	Field assessment and protocol for finds is required
Loskop Formation	Low	Desktop Study required
Selons River Formation	Very Low	Protocol for a Chance Find required

Databases and collections: Ditsong: National Museum of Natural History. Evolutionary Studies Institute, University of the Witwatersrand (ESI).

Impact: **VERY LOW** for the Selons River Formation, Transvaal Supergroup. There are not significant fossil resources that may be impacted by the development (mudstone, shale) and if destroyed are no longer available for scientific research or other public good (Almond, *et al.* 2009).

The Project includes one locality Option (see Figure 2) (1f,1j). The palaeontological sensitivity is **VERY LOW**:  
Option1: A polygon area outlined in red located south of the N4 National Road and the town of eMalahleni, it borders the dam medially, the R544 Road is to the west, a road runs east-west through the property, and it is surrounded by agricultural land. The approximate size of the site is 98,8442 hectares.

All the land involved in the development was assessed (**ni,nii**) and none of the property is unsuitable for development (see Recommendation B). Alternative 1 is preferred as it is partially situated on Dolerite.

#### H. Description of the Methodology (1e)

The palaeontological impact assessment was undertaken in June 2021. A Phase 1: Field Survey of the affected portion includes photographs (in 7.1 mega pixels) taken of the site with a digital camera (Canon PowerShot A470). Additionally, Google.maps will be accessed on a cellular phone for navigation. A Global Positioning System (GPS) (Garmin eTrex 10) is used to record fossiliferous finds and outcrops (bedrock) when the area is not covered with topsoil, subsoil, overburden, vegetation, grassland, trees or waste. A literature survey is included and the study relied heavily on geological maps.

SAHRA document 7/6/9/2/1 (SAHRA 2012) requires track records/logs from archaeologists not palaeontologists as palaeontologists concentrate on outcrops which may be recorded with a GPS. Isolated occurrences of rocks usually do not constitute an outcrop. Fossils can occur in dongas, as nodules, in fresh rock exposures, and in riverbeds. Finding fossils require the experience and technical knowledge of the professional palaeontologist, but



that does not mean that an amateur can't find fossils. The geology of the region is used to predict what type of fossil and zone will be found in any particular region. Archaeozoologists concentrate on more recent fossils in the quaternary and tertiary deposits.

**Assumptions and Limitations (1i):-**

The accuracy and reliability of the report **may be** limited by the following constraints:

1. Most development areas have never been surveyed by a palaeontologist or geophysicist.
2. Variable accuracy of geological maps and associated information.
3. Poor locality information on sheet explanations for geological maps.
4. Lack of published data.
5. Lack of rocky outcrops.
6. Inaccessibility of site.
7. Insufficient data from developer and exact lay-out plan for all structures.

**A Phase 2 Palaeontological Impact Assessment: Mitigation will include:**

1. Recommendations for the future of the site.
2. Description of work done (including number of people and their responsibilities).
3. A written assessment of the work done, fossils excavated, not removed or collected and observed.
4. Conclusion reached regarding the fossil material.
5. A detailed site plan.
6. Possible declaration as a heritage site or Site Management Plan.

The National Heritage Resources Act No. 25 of 1999 further prescribes.

Act No. 25 of 1999. National Heritage Resources Act, 1999.

National Estate: 3 (2) (f) archaeological and palaeontological sites,

(i)(1) objects recovered from the soil or waters of South Africa, including archaeological and palaeontological objects and material, meteorites and rare geological specimens,

Heritage assessment criteria and grading: (a) Grade 1: Heritage resources with qualities so exceptional that they are of special national significance;

(b) Grade 2: Heritage resources which, although forming part of the national estate, can be considered to have special qualities which make them significant within the context of a province or a region; and (c) Grade 3: Other heritage resources worthy of conservation.

SAHRA is responsible for the identification and management of Grade 1 heritage resources.

Provincial Heritage Resources Authority (PHRA) identifies and manages Grade 2 heritage resources.

Local authorities identify and manage Grade 3 heritage resources.

No person may damage, deface, excavate, alter, remove from its original position, subdivide or change the planning status of a provincially protected place or object without a permit issued by a heritage resources authority or local authority responsible for the provincial protection.

Archaeology, palaeontology and meteorites: Section 35.

(2) Subject to the provisions of subsection (8) (a), all archaeological objects, palaeontological material and meteorites are the property of the State.

(3) Any person who discovers archaeological or palaeontological objects or material or a meteorite in the course of development or agricultural activity must immediately report the find to the responsible heritage resources authority, or to the nearest local authority offices or museum, which must immediately notify such heritage resources authority.

Mitigation involves planning the protection of significant fossil sites, rock units or other palaeontological resources and/or excavation, recording and sampling of fossil heritage that might be lost during development, together with pertinent geological data. The mitigation may take place before and / or during the construction phase of development. The specialist will require a Phase 2 mitigation permit from the relevant Heritage Resources Authority before a Phase 2 may be implemented.

The Mitigation is done in order to rescue representative fossil material from the study area to allow and record the nature of each locality and establish its age before it is destroyed and to make samples accessible for future research. It also interprets the evidence recovered to allow for education of the public and promotion of palaeontological heritage.

Should further fossil material be discovered during the course of the development (e. g. during bedrock excavations), this must be safeguarded, where feasible *in situ*, and reported to a palaeontologist or to the Heritage Resources authority. In situations where the area is considered palaeontologically sensitive (e. g. Karoo Supergroup Formations, ancient marine deposits in the interior or along the coast) the palaeontologist might need to monitor all newly excavated bedrock. The developer needs to give the palaeontologist sufficient time to assess and document the finds and, if necessary, to rescue a representative sample.

When a Phase 2 palaeontological impact study is recommended, permission for the development to proceed can be given only once the heritage resources authority has received and approved a Phase 2 report and is satisfied that (a) the palaeontological resources under threat have been adequately recorded and sampled, and (b) adequate development on fossil heritage, including, where necessary, *in situ* conservation of heritage of high significance. Careful planning, including early consultation with a palaeontologist and heritage management authorities, can minimise the impact of palaeontological surveys on development projects by selecting options that cause the least amount of inconvenience and delay.

Three types of permits are available; Mitigation, Destruction and Interpretation. The specialist will apply for the permit at the beginning of the process (SAHRA 2012).

### **I. Description of significant fossil occurrences**

All Karoo Supergroup geological formations are ranked as **LOW** to **VERY HIGH**, and here the impact is potentially **VERY HIGH** for the surrounding Vryheid Formation.

Fossils likely to be found are mostly plants (Appendix 1) such as '*Glossopteris flora*' of the Vryheid Formation. The aquatic reptile *Mesosaurus* and fossil fish may also occur with marine invertebrates, arthropods and insects. Trace fossils can also be present. During storms a great variety of leaves, fructifications and twigs accumulated and because they were sandwiched between thin films of mud, they were preserved to bear record of the wealth and the density of the vegetation around the pools. They make it possible to reconstruct the plant life in these areas and wherever they are found, they constitute most valuable palaeobotanical records (Plumstead 1963) and can be used in palaeoenvironmental reconstructions.

The Selons River Formation is unfossiliferous.

One of the formations in the development area, the Loskop Formation, may contain fossils. Nixon *et al.* (1988) described the black shales south-west of Potchefstroom as consisting of overlapping laminated basal mounds which are stromatolitic as well as spheroidal possible planktonic fossil algae. These can range in size from 3.5 - 17 mm in height and up to 10 mm in diameter and can be present in the development area.

Details of the location and distribution of all significant fossil sites or key fossiliferous rock units are often difficult to be determined due to thick topsoil, subsoil, overburden and alluvium. Depth of the overburden may vary a lot.

The threats are:-

- Earth moving equipment/machinery (front end loaders, excavators, graders, dozers) during construction,
- The sealing-in or destruction of fossils by development, vehicle traffic, and human disturbance. See Description of the Geological Setting (F) above.

## J. Recommendation

- a. There is no objection (see Recommendation B) to the development, it is not necessary to request a Phase 1 Palaeontological Impact Assessment: Field Study to determine whether the development will affect fossiliferous outcrops as the palaeontological sensitivity is **VERY LOW**. A Phase 1 Palaeontological Field Study is only required if a fossiliferous formation (Karoo Supergroup) or fossils are found during construction. Protocol is attached (Appendix 2).
- b. A Desktop Study was done in order to alert to the overlying Vryheid Formation.
- c. This project may benefit the economy, the life expectancy of the community, the growth of the community, and social development in general.
- d. Preferred choice: Only one Option is presented as is possible.
- e. The following should be conserved: if any palaeontological material is exposed during clearing, digging, excavating, drilling or blasting SAHRA must be notified. All construction activities must be stopped, a 30 m no-go barrier constructed and a palaeontologist should be called in to determine proper mitigation measures.
- f. Consultation with parties was not necessary **(1o,p,q)**.
- g. The development may go ahead.
- h. This report must be submitted to SAHRA together with the Heritage Impact Assessment.

### Sampling and collecting:

Wherefore a permit is needed from the South African Heritage Resources Agency (SAHRA / PHRA).

- a. Objections: Cautious. See heritage value and recommendation.
- b. Conditions of development: See Recommendation.
- c. Areas that may need a permit: Yes.
- d. Permits for mitigation: **Needed from SAHRA/PHRA prior to Mitigation.**

## K. Conclusions

- a. All the land involved in the development was assessed and none of the property is unsuitable for development (see Recommendation B).
- b. All information needed for the Phase 1 Palaeontological Impact Assessment and Field Study was provided by the Consultant. All technical information was provided by Anton Pelser.
- c. Areas that would involve mitigation and may need a permit from the South African Heritage Resources Agency are discussed.
- d. The following should be conserved: if any palaeontological material is exposed during clearing, digging, excavating, drilling or blasting, SAHRA must be notified. All development activities must be stopped and a palaeontologist should be called in to determine proper mitigation measures.
- e. Condition in which development may proceed: It is further suggested that a Section 37(2) agreement of the Occupational, Health and Safety Act 85 of 1993 is signed with the relevant contractors to protect the environment (fossils) and adjacent areas as well as for safety and security reasons.

## L. Bibliography

- ALMOND, J., PETHER, J, and GROENEWALD, G. 2013. South African National Fossil Sensitivity Map. SAHRA and Council for Geosciences.
- CLUVER, M.A. 1978. *Fossil Reptiles of the South African Karoo*. South African Museum, Cape Town, Pp 1-54.
- GROENEWALD, G. and GROENEWALD, D. 2014. Palaeotechnical Report for Mpumalanga Province, South African Heritage Agency, **1-24**.
- KENT, L. E., 1980. Part 1: Lithostratigraphy of the Republic of South Africa, South West Africa/Namibia and the Republics of Bophuthatswana, Transkei and Venda. SACS, Council for Geosciences, *Stratigraphy of South Africa. 1980. South African Committee for Stratigraphy. Handbook 8, Part 1*, pp 690.
- KEYSER, N., BOTHA, G.A. and GROENEWALD, G.H. 1986. 1:250 000 Geological Map 2628 East Rand, South African Committee for Stratigraphy, Council for Geoscience, Pretoria.
- KITCHING, J.W. 1977. The distribution of the Karoo Vertebrate Fauna, Memoir 1. Bernard Price Institute for Palaeontological Research (now ESI), University of the Witwatersrand, Pp 1-131.
- JOHNSON, M.R. 2009. Ecca Group. Karoo Supergroup. Catalogue of South African Lithostratigraphic Units. SACS, **10**: 5-7.
- MCCARTHY, T and RUBIDGE, B. 2005. *The Story of Earth Life: A southern African perspective on a 4.6-billion-year journey*. Struik. Pp 333.
- NORMAN, N. 2013. *Geology off the beaten track: exploring South Africa's hidden treasures*. De Beers, Struik, Pp 1-256.
- NORMAN, N. and WHITFIELD, G., 2006. *Geological Journeys*. De Beers, Struik, Pp 1-320.
- PLUMSTEAD, E.P. 1963. The influence of plants and environment on the developing animal life of Karoo times. *South African Journal of Science*, **59(5)**: 147-152.
- PREVEC, R. 2011. A structural re-interpretation and revision of the type material of the glossopterid ovuliferous fructification *Scutum* from South Africa. *Palaeontologia africana*, **46**: 1-19.
- RAYNER, R.J. and COVENTRY, M.K. 1985. A *Glossopteris* flora from the Permian of South Africa. *South African Journal of Science*, **81**: 21-32.
- RUBIDGE, B. S. (ed.), 1995. Biostratigraphy of the Beaufort Group (Karoo Supergroup). South African Committee for Biostratigraphy, Biostratigraphic Series No. 1, 46pp. Council for Geoscience, Pretoria.
- SAHRA 2012. Compliance to SAHRA Minimum Standards for Phase 1 Archaeological Impact Assessments. Document 7/6/9/2/1. Pp 2.
- SG 2.2 SAHRA APMHOB Guidelines, 2012. Minimum standards for palaeontological components of Heritage Impact Assessment Reports, Pp 1-15.
- SNYMAN, C. P., 1996. *Geologie vir Suid-Afrika*. Departement Geologie, Universiteit van Pretoria, Pretoria, Volume 1, Pp. 513.
- VAN DER WALT, M., DAY, M., RUBIDGE, B. S., COOPER, A. K. & NETTERBERG, I., 2010. Utilising GIS technology to create a biozone map for the Beaufort Group (Karoo Supergroup) of South Africa. *Palaeontologia Africana*, **45**: 1-5.
- VISSER, D.J.L. (ed) 1984. Geological Map of South Africa 1:100 000. South African Committee for Stratigraphy. Council for Geoscience, Pretoria.
- VISSER, D.J.L. (ed) 1989. *Toeligting: Geologiese kaart (1:100 000). Die Geologie van die Republieke van Suid Afrika, Transkei, Bophuthatswana, Venda, Ciskei en die Koningkryke van Lesotho en Swaziland*. South African Committee for Stratigraphy. Council for Geoscience, Pretoria.
- WALRAVEN, F. 1978. 1:250 000 Geological Map 2528 Pretoria, South African Committee for Stratigraphy, Council for Geoscience, Pretoria.

## Declaration (/Disclaimer) (1b)

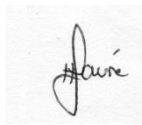


I, Heidi Fourie, declare that I am an independent consultant and have no business, financial, personal or other interest in the proposed development project for which I was appointed to do a palaeontological assessment. There are no circumstances that compromise the objectivity of me performing such work.

I accept no liability, and the client, by receiving this document, indemnifies me against all actions, claims, demands, losses, liabilities, costs, damages and expenses arising from or in connection with services rendered, directly or indirectly by the use of the information contained in this document.

It may be possible that the Palaeontological Impact Assessment may have missed palaeontological resources in the project area as outcrops are not always present or visible while others may lie below the overburden of earth and may only be present once development commences.

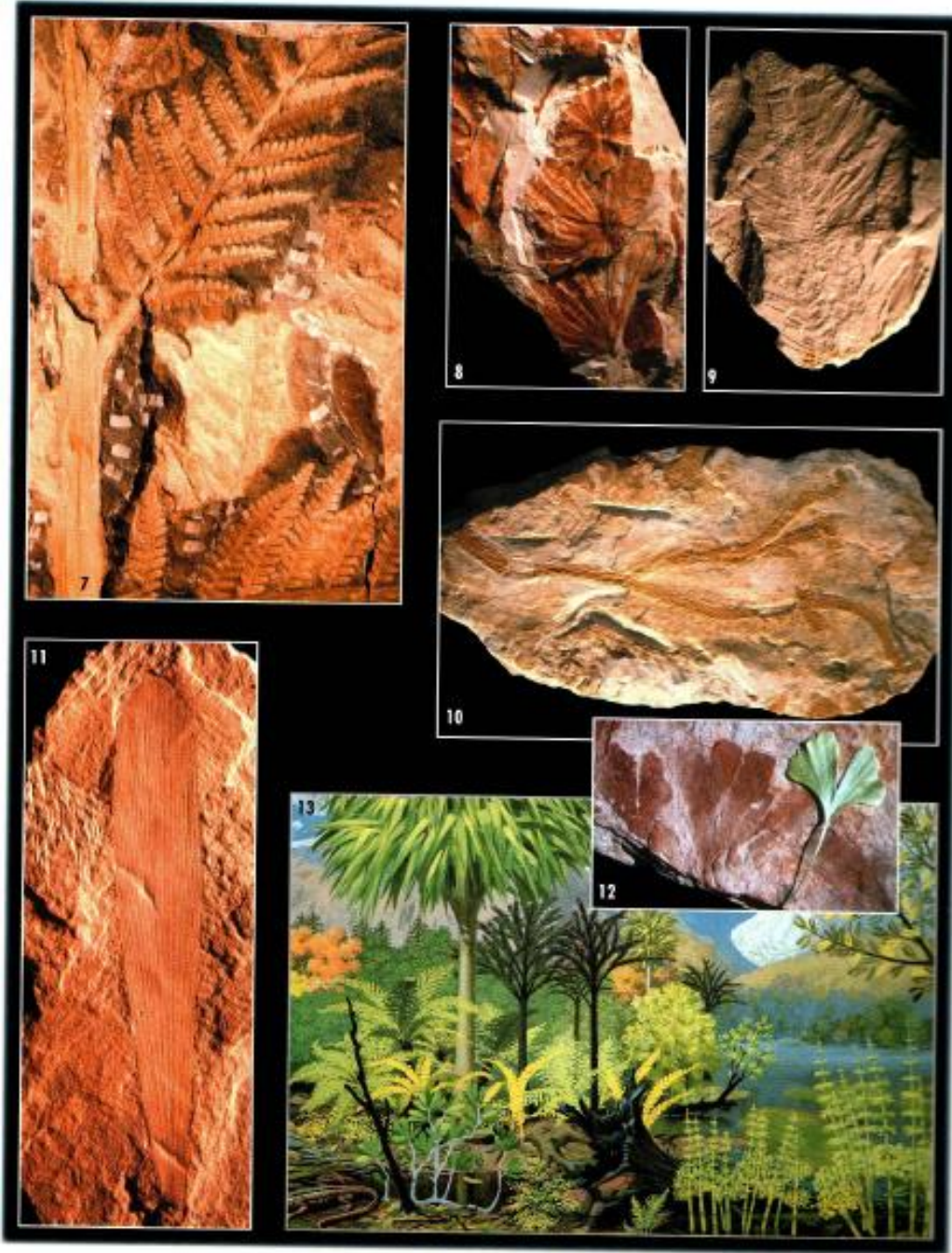
This report may not be altered in any way and any parts drawn from this report must make reference to this report.

A square box containing a handwritten signature in black ink. The signature appears to be 'Heidi Fourie' written in a cursive style.

---

Heidi Fourie  
2021/06/20

Appendix 1: Example of Vryheid Formation Fossils (MacRae 1999)



Appendix 2: Protocol for Chance Finds and Management Plan (1k,1l,1m)

This section covers the recommended protocol for a Phase 2 Mitigation process as well as for reports where the Palaeontological Sensitivity is **LOW**; this process guides the palaeontologist / palaeobotanist on site and should not be attempted by the layman / developer. As part of the Environmental Authorisation conditions, an Environmental Control Officer (ECO) will be appointed to oversee the construction activities in line with the legally binding Environmental Management Programme (EMPr).

- The EMPr already covers the conservation of heritage and palaeontological material that may be exposed during construction activities.

- For a chance find, the protocol is to immediately cease all construction activities, construct a 30 m no-go barrier, and contact SAHRA for further investigation. Construction workers must be informed that this is a no-go area.
- It is recommended that the EMP be updated to include the involvement of a palaeontologist for pre-construction training of the ECO or during the digging and excavation phase of the development.
- The ECO must visit the site after clearing, drilling, excavations and blasting and keep a photographic record.
- The developer may be asked to survey the areas affected by the development and indicate on plan where the construction / development / mining will take place. Trenches may have to be dug to ascertain how deep the sediments are above the bedrock (can be a few hundred metres). This will give an indication of the depth of the topsoil, subsoil, and overburden, if need be trenches should be dug deeper to expose the interburden.

Mitigation will involve recording, rescue and judicious sampling of the fossil material present in the layers sandwiched between the geological / coal layers. It must include information on number of taxa, fossil abundance, preservational style, and taphonomy. This can only be done during mining or excavations. In order for this to happen, in case of coal mining operations, the process will have to be closely scrutinised by a professional palaeontologist / palaeobotanist to ensure that only the coal layers are mined and the interlayers (siltstone and mudstone) are surveyed for fossils or representative sampling of fossils are taking place.

The palaeontological impact assessment process presents an opportunity for identification, access and possibly salvage of fossils and add to the few good plant localities. Mitigation can provide valuable onsite research that can benefit both the community and the palaeontological fraternity.

A Phase 2 study is very often the last opportunity we will ever have to record the fossil heritage within the development area. Fossils excavated will be stored at a National Repository.

**A Phase 2 Palaeontological Impact Assessment: Mitigation will include (SAHRA) -**

1. Recommendations for the future of the site.
2. Description and purpose of work done (including number of people and their responsibilities).
3. A written assessment of the work done, fossils excavated, not removed or collected and observed.
4. Conclusion reached regarding the fossil material.
5. A detailed site plan and map.
6. Possible declaration as a heritage site or Site Management Plan.
7. Stakeholders.
8. Detailed report including the Desktop and Phase 1 study information.
9. Annual interim or progress Phase 2 permit reports as well as the final report.
10. Methodology used.

Mitigation involves planning the protection of significant fossil sites, rock units or other palaeontological resources and/or excavation, recording and sampling of fossil heritage that might be lost during development, together with pertinent geological data. The mitigation may take place before and / or during the construction phase of development. The specialist will require a Phase 2 mitigation permit from the relevant Heritage Resources Authority before a Phase 2 may be implemented.

The Mitigation is done in order to rescue representative fossil material from the study area to allow and record the nature of each locality and establish its age before it is destroyed and to make samples accessible for future

research. It also interprets the evidence recovered to allow for education of the public and promotion of palaeontological heritage.

Should further fossil material be discovered during the course of the development (e. g. during bedrock excavations), this must be safeguarded, where feasible *in situ*, and reported to a palaeontologist or to the Heritage Resources authority. In situations where the area is considered palaeontologically sensitive (e. g. Karoo Supergroup Formations, ancient marine deposits in the interior or along the coast) the palaeontologist might need to monitor all newly excavated bedrock. The developer needs to give the palaeontologist sufficient time to assess and document the finds and, if necessary, to rescue a representative sample.

When a Phase 2 palaeontological impact study is recommended, permission for the development to proceed can be given only once the heritage resources authority has received and approved a Phase 2 report and is satisfied that (a) the palaeontological resources under threat have been adequately recorded and sampled, and (b) adequate development on fossil heritage, including, where necessary, *in situ* conservation of heritage of high significance. Careful planning, including early consultation with a palaeontologist and heritage management authorities, can minimise the impact of palaeontological surveys on development projects by selecting options that cause the least amount of inconvenience and delay.

Three types of permits are available; Mitigation, Destruction and Interpretation. The specialist will apply for the permit at the beginning of the process (SAHRA 2012).

The Palaeontological Society of South Africa (PSSA) does not have guidelines on excavating or collecting, but the following is suggested:

1. The developer needs to clearly stake or peg-out (survey) the areas affected by the mining/ construction/ development operations and dig representative trenches and if possible supply geological borehole data. When the route is better defined, it is recommended that a specialist undertake a 'walk through' of the entire road as well as construction areas, including camps and access roads, prior to the start of any construction activities, this may be done in sections.
2. When clearing vegetation, topsoil, subsoil or overburden, hard rock (outcrop) is found, the contractor needs to stop all work.
3. A Palaeobotanist / palaeontologist (contact SAHRIS for list) must then inspect the affected areas and trenches for fossiliferous outcrops / layers. The contractor / developer may be asked to move structures, and put the development on hold.
4. If the palaeontologist / palaeobotanist is satisfied that no fossils will be destroyed or have removed the fossils, development and removing of the topsoil can continue.
5. After this process the same palaeontologist / palaeobotanist will have to inspect and offer advice through the Phase 2 Mitigation Process. Bedrock excavations for footings may expose, damage or destroy previously buried fossil material and must be inspected.
6. When permission for the development is granted, the next layer can be removed, if this is part of a fossiliferous layer, then with the removal of each layer of sediment, the palaeontologist / palaeobotanist must do an investigation (a minimum of once every week).
7. At this stage the palaeontologist / palaeobotanist in consultation with the developer / mining company must ensure that a further working protocol and schedule is in place. Onsite training should take place, followed by an annual visit by the palaeontologist / palaeobotanist.

#### **Fossil excavation if necessary, during Phase 2:**

1. Photography of fossil / fossil layer and surrounding strata.
2. Once a fossil has been identified as such, the task of extraction begins.



3. It usually entails the taking of a GPS reading and recording lithostratigraphic, biostratigraphic, date, collector and locality information.
4. Using Paraloid (B-72) as an adhesive and protective glue, parts of the fossil can be kept together (not necessarily applicable to plant fossils).
5. Slowly chipping away of matrix surrounding the fossil using a geological pick, brushes and chisels.
6. Once the full extent of the fossil / fossils is visible, it can be covered with a plaster jacket (not necessarily applicable to plant fossils).
7. Chipping away sides to loosen underside.
8. Splitting of the rock containing palaeobotanical material should reveal any fossils sandwiched between the layers.

**This document forms part of the Environmental Monitoring Programme.** For practical reasons a palaeontologist/palaeobotanist may be required to be on site as pre-determined. If any fossil material is discovered then a Phase 1 rescue operation may be necessary, and a permit will be required.

**The South African Heritage Resources Agency has the following documents in place:**

Guidelines to Palaeontological Permitting policy.

Minimum Standards: Palaeontological Component of Heritage Impact Assessment reports.

Guidelines for Field Reports.

Palaeotechnical Reports (Eastern Cape, North West, Northern Cape, Mpumalanga, Gauteng, Western Cape, Free State, Kwazulu Natal, and Limpopo)

Appendix 3:

**Table 2:** Listing points in Appendix 6 of the Act and position in Report (bold in text).

<b>Section in Report</b>	<b>Point in Act</b>	<b>Requirement</b>
B	1(c)	Scope and purpose of report
B	1(d)	Duration, date and season
B	1(g)	Areas to be avoided
D	1(ai)	Specialist who prepared report
D	1(aii)	Expertise of the specialist
F Figure 3	1(h)	Map
F, B	1(ni)(iA)	Authorisation
F, B	1(nii)	Avoidance, management, mitigation and closure plan
G Table 1	1(cA)	Quality and age of base data
G Table 2	1(cB)	Existing and cumulative impacts
G, D	1(f)	Details or activities of assessment
G	1(j)	Description of findings
H	1(e)	Description of methodology
H	1(i)	Assumptions
J	1(o)	Consultation
J	1(p)	Copies of comments during consultation
J	1(q)	Information requested by authority
Declaration	1(b)	Independent declaration
Appendix 2	1(k)	Mitigation included in EMPr
Appendix 2	1(l)	Conditions included in EMPr
Appendix 2	1(m)	Monitoring included in EMPr
D	2	Protocol or minimum standard