



REPORT ON THE RELOCATION OF GRAVES

N8-14 GRAVE RELOCATION PROJECT

**FARM MIDWAY 2631, WORLEY PARSONS (PTY) LTD,
BLOEMFONTEIN, FREE STATE**

RELOCATION OF GRAVES AFFECTED BY THE WIDENING OF NATIONAL ROAD 8

Issue Date: 31/07/2015

Revision No.: 0

SAHRA PERMIT NUMBER: 2015; CaseID: 7435

Declaration of Independence

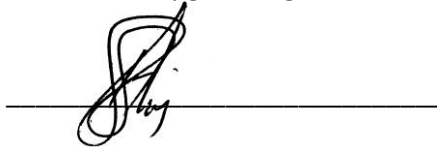
The report has been compiled by PGS Heritage, appointed Heritage Specialist for Worley Parsons (Pty) Ltd. The views stipulated in this report are purely objective and no other interests are displayed during the decision making processes discussed in this document.

HERITAGE CONSULTANT: PGS Heritage

REPORT COMPILED BY: Henk Steyn, Marko Hutten and Lineree de jager

CONTACT PERSON: Henk Steyn
Tel: +27 (0) 12 332 5305
Email: henk@pgsheritage.co.za

SIGNATURE:



ACKNOWLEDGEMENT OF RECEIPT

CLIENT: Worley Parsons (Pty) Ltd

CONTACT PERSON: Jim Nortier
Tel: +27 (0) 82 806 5672 Email: nortierj@gmail.com

SIGNATURE:

EXECUTIVE SUMMARY

THE RELOCATION OF FOURTEEN POSSIBLE GRAVES FROM THE N8-14 BLOEMFONTEIN SITE, ON THE FARM MIDWAY 2631, BLOEMFONTEIN, FREE STATE

This report is submitted in fulfilment of the requirements of:

- ❑ The **South African Heritage Resources Agency, Permit No. 358 (CaseID: 7435)**, issued under Section 36(3) of the National Heritage Resources Act, Act no. 25 of 1999 to Henk Steyn.
- ❑ The agreement between *PGS Heritage* and *Worley Parsons (Pty) Ltd* for the completion of the N8-14 Grave investigation project.

PGS Heritage was contracted by *Worley Parsons (Pty) Ltd* to investigate (and relocate if necessary) by means of an archaeological excavation fourteen possible graves, which were situated on Farm Midway 2631. The graves were affected by the expansion of the National Road 8 (N8) east of Bloemfontein, Free State.

This report documents the relocation of the graves (as required by SAHRA in terms of section 36 of the National Heritage Resources Act, 25 Of 1999) implemented under the SAHRA Permit, No 358 (CaseID: 7435), issued by the SAHRA Burial Grounds and Graves Unit.

CONTENTS PAGE

1. INTRODUCTION	1
2. SOCIAL CONSULTATION	1
3. LEGAL COMPLIANCE.....	2
4. METHODOLOGY	3
4.1 Method of excavation	3
5. EXHUMATION OF REMAINS AND DETAILS OF DECEASED.....	4
5.1 General discussion	4
5.2 Description of individual graves	6
6. CONCLUSION.....	33
7. LITERATURE CITED	34

LIST OF APPENDICES

APPENDIX A – LOCALITY AND SURVEY MAPS

APPENDIX B – SITE NOTICES

APPENDIX C – NEWSPAPER NOTICES

APPENDIX D – CONFIRMATION OF RADIO BROADCAST

APPENDIX E – COPIES OF RELEVANT PERMITS

APPENDIX F – SITE LAYOUT MAP

LIST OF FIGURES

Figure 1 – N8/001, “Grave marker” of cross 7
Figure 2 – Grave N8/002, Dressing..... 9
Figure 3 – Grave N8/003, Dressing..... 11
Figure 4 – Grave N8/004, Dressing..... 13
Figure 5 – Grave N8/005, Dressing..... 15
Figure 6 – Grave N8/006, Dressing..... 17
Figure 7 – N8/007, Dressing 19
Figure 8 – N8/008, Dressing 21
Figure 9 – N8/012, Dressing 23
Figure 10 – N8/013, Dressing 25
Figure 11 – N8/014, Dressing 27
Figure 12 – N8/015, Dressing 29
Figure 13 – N8/016, Dressing 31
Figure 14 – N8/017, Dressing 33
Figure 15 – General Locality Map..... 1
Figure 16 - Approximate location of the cemetery (yellow marker at phase 2) 1

1. INTRODUCTION

PGS Heritage was contracted by *Worley Parsons (Pty) Ltd* to investigate and relocate if necessary, by means of an archaeological excavation, fourteen possible graves, that were situated on the Farm Midway 2631. The site would be negatively affected by the widening of the Nation Road 8 (N8) east of Bloemfontein. Four of the graves were clearly marked and the next-of-kin were found without difficulty. The next-of-kin of a poorly marked grave was identified towards the end of the project, bringing the final number of identified graves to five. Due to the age of the cemetery, continual flooding due to irrigation over the years and trampling by livestock in the area it was difficult to identify the position of some of the graves. The excavation subsequently revealed the presence of 14 sets of human remains, which were exhumed and re-interred on 28 – 30 June 2015 in the Suid Park (one grave), Stormlaan (9 graves) and Thabu Nchu Zone 4 (4 graves) cemeteries respectively.

2. SOCIAL CONSULTATION

A comprehensive social consultation process was conducted with the aim of identifying any family members and negotiating the mitigation of the affected graves with any affected and interested parties. Site notices (**Appendix B**), newspaper notices (**Appendix C**) and radio broadcasts (Lesedi FM, **Appendix D**) were also used.

During April 2014, a social consultation process was initiated to relocate a cemetery containing 126 graves on the northern side of the N8 (Appendix B – D, phase 1), not far from the cemetery that is the subject of this application (phase 2). Three social consultation meetings were held with the next-of-kin of these graves before SANRAL decided to rather extend the road to the southern side in order to avoid relocating this large number of graves. Unfortunately, there is another cemetery located on the southern side of the N8 that now needs to be relocated (Appendix E).

During the last of the meetings mentioned above, the attendees were asked if they have any knowledge of the cemetery that is mentioned in this application. One of the attendees gave us the name of Mr. Piet Sebothelo (see below).

A new social consultation process commenced on, 15 September 2014 with the erection of bilingual (English and Setswana) site notices (Appendix E) and newspaper notices in the Daily Sun (11 November 2014) and the Mangaung Issue (12 November 2014) (Appendix F). A 30 second radio notice was aired on Lesedi FM 10 times between 11 March and 15 March 2015 (Appendix H). One person contacted PGS as a result of the radio broadcast but on investigation it turned out that this

person's graves are located in another cemetery closer to the airport. To date no additional family members or affected parties, other than those stated in this application, have contacted PGS Heritage with further information relating to these graves in question.

On 14 November 2014 a site meeting was held with the Sebothelo family. Mr Piet Basoabile Sebothelo (331116 5133 081), the representative of the Sebothelo family, requested that their four relatives who are buried in this cemetery be relocated to a cemetery in Thaba Nchu, Zone 4 (Appendix I). The Sebothelo family did not have any additional information about other leads to additional affected families.

As a result of the radio notices, we were contacted by Mrs Sarah Merwe who had one grave in the cemetery, that of her sister the late Maggie Dewee. A total number of five graves were identified during the social consultation process.

3. LEGAL COMPLIANCE

Exhumation and re-interment of human remains in the Free State is governed by the Free State Standard Cemeteries and Crematoria by-law of the Municipal Systems Act, 2000 and the Health Act, 2003. The graves and mortal remains of victims of conflict and graves older than 60 years in a burial ground not administered by a local authority, as well as all graves older than 100 years, are also subject to the stipulations of the National Heritage Resources Act (Act 25 of 1999). All local laws and by-laws regarding cemeteries were also adhered to.

In order to comply with the above, permissions to exhume and re-inter the human remains and associated grave dressings and cultural remains were obtained from the following responsible authorities (refer **Appendix E** for copies):

- South African Heritage Resources Agency (SAHRA). Permit No 358 (CaseID: 7435) was issued in this regard.
- .
- The Department of Cooperative Governance and Traditional Affairs
- The Office of the Station Commissioner of the South African Police Services in Bloemspruit was informed of the date of exhumation seven days before the exhumation took place. Members of the SAPS attended the exhumation proceedings as required by the relevant legislation.

- A Health inspector from the Mangaung Metropolitan Municipality (Department of Public Health) attended the exhumation proceedings
- A registered funeral undertaker (Martins Funerals Bloemfontein) conducted the handling and reburial of the exhumed remains as required by the relevant regulations.

4. METHODOLOGY

4.1 Method of excavation

The methods employed during exhumation aimed to recover all the remains, to minimise damage to the remains, to record the three-dimensional context of the remains and to preserve and respect the dignity of the buried individual. All evidence that might allude to the events leading to the death of the individual and circumstances regarding the event were recorded and interpreted.

The excavation methods employed accomplished the *in situ* exposure of the burial and associated artefacts (Nienaber and Steyn, 1999). The focus was on accurate and complete documentation (Nienaber, 1997). Various methods for the excavation of graves have been proposed by different authors (Hester, 1975; Joukowsky, 1980; Krogman and Iscan, 1986; Morse, 1978) and all stress the need for adequate workspace around the exposed remains and a systematic approach to the removal of individual bones. The archaeological method, including extensive test trenching to prevent damage to the remains, was employed. This approach was largely similar to that of forensic archaeology where buried body cases are concerned. The approach was adapted for each situation since graves vary in shape, size, depth and content (Nienaber, 1999). The methods used in forensic archaeology are discussed by Steyn, et.al. (2000).

In each case, the surface features of the grave were cleaned and documented. Hereafter any cultural material associated with the surface dressing was collected and catalogued, if such occurred. All observations regarding construction, materials and characteristics of the surface features were documented.

After the removal of the surface features, the extent of the burial pit was ascertained through excavation and observation of differences in the matrix. After the indications of the presence and characteristics of the burial pit were documented, the in-fill was excavated to expose the human remains and associated cultural materials. Removal of the matrix of the burial pit was accomplished through the test-trench approach, whereby a narrow trench (25-30 cm wide) is excavated with a trowel to a depth of between 15 and 20 cm in the lower third of the burial pit (in this instance the lower third usually constituted the eastern side of the grave). This area is chosen since it is most likely that the femurs of the skeleton occur in this part of the grave. Since the femur

is a robust bone, it is usually not easily damaged through excavation. If no indications of the presence of human remains were observed in the test trench, the remaining in-fill matrix, down to the depth of the test trench, was removed with a shovel. The matrix surrounding the remains was carefully screened to retrieve any possible cultural artefacts associated with the burial. This process was repeated until indications of the presence of human remains were observed.

As soon as human remains were encountered, care was taken to leave as much of the skeleton as possible covered in order to protect the remains from damage by excavation and to preserve the integrity of the context of the skeletal elements and possible associated cultural remains. The extent and characteristics of the burial pit were now documented and the workspace was assessed and enlarged if not sufficient. This was only done after documentation of the features of the burial pit and without sacrificing any vital information.

The excavation then continued with the aim of ascertaining the extent of the skeletal remains and the location of the different skeletal elements, after which the remains were uncovered, starting from the middle and working outwards. This method again ensures the minimum disturbance of the remains and associated cultural materials. As soon as the skeleton was uncovered, it was documented *in situ* and removed. A further test trench of 15 cm deep was dug in the area directly underlying the location of the remains to ensure that all possible remains and artefacts were found and recovered.

5. EXHUMATION OF REMAINS AND DETAILS OF DECEASED.

5.1 General discussion

The graves were located in an informal cemetery situated on the southern side of the National Road 8 (N8) on the Farm Midway 2631 at -29.11463; 26.32346, Bloemfontein, Free State.

The total number of graves exhumed was fourteen of which five has been identified by next-of-kin. The graves identified at this location next to the N8 appeared to be situated in two clusters in close proximity of each other. The first cluster of graves were graves N8/01 up to grave N8/08 and was situated approximately 10m further to the west of the second cluster with graves N8/12 up to grave N8/17. The graves were placed in lines at both of the clusters identified. The area in between these two clusters of graves did not appear to contain any graves as no surface features (such as headstones or packed rocks) were identified. It was therefore decided to test this area for any other unmarked graves that might possibly be situated in between the two known clusters of graves.

The purpose of test excavations is not to look for human remains, as this may cause damage to the graves, but to identify and locate previously unmarked graves.. The methodology to conduct a test excavation in this context was to carefully excavate the topsoil of the identified area to assess whether a grave-shaped pit had been previously dug and back filled. The exact location, extent and orientation of these possible pits could then be identified and assessed to be graves or not. This is determined from the change/disturbance in the natural stratigraphy seen by differing soil colour and texture. This method of test excavation is standard archaeological practice when attempting to locate graves without disturbing the human remains buried beneath the surface. Test excavations are normally conducted by hand, but could be assisted mechanically if a machine is available. In this instance the soil in the cemetery consisted of very hard and compacted clay, making test excavation by hand very difficult.

Test excavations with the help of an excavating TLB were conducted in the identified area. The area measured approximately 80m² and the topsoil was removed mechanically under close supervision and instruction, in order to identify any possible grave pits. The area in between graves N8/07 and N8/08 measured approximately 10m² and it was also tested. The test excavations proved that the identified areas were previously undisturbed and that no further graves were situated within the areas that were tested.

The excavation subsequently revealed the presence of 14 sets of human remains, which were exhumed and re-interred on 28 – 30 June 2015 in the Suid Park (one grave), Stormlaan (9 graves) and Thabu Nchu Zone 4 (4 graves) cemeteries respectively.

5.2 Description of individual graves

Grave No N8 (S) / 001

Name of deceased:	Hendrik Sebothelo.
Age at death:	40's.
Date of death:	1960's.
Name of family representative:	Piet Basoabile Sebothelo.
New Grave number:	Thaba Nchu Municipal Cemetery. No grave numbers are issued in this cemetery. The next-of-kin knows the location of the grave.
Location of grave:	The grave formed part of an informal cemetery situated on the Farm Midway 2631, near Bloemfontein, Free State Province.
Surface features of grave:	A single rock and a crude metal cross indicated the location of the grave. The grave had an east/west orientation. No headstone was present.
Grave goods:	None were found.
Measurements of grave pit:	2.1m (l) x 1m (w) x 1.65m (d).
Depth at which cultural remains were found:	Only coffin remains were found at a depth of 1.60m.
Depth at which human remains were found:	1.65m.
Burial position:	The individual was buried in a supine position in a coffin with the head at the western end. The head was slightly tilted to the left. Both arms were extended and were placed alongside the body. Both legs were also extended and were placed next to each other.
Description of human remains:	The remains were that of an adult male and were in a fair state of preservation.



Figure 1 – N8/001, Dressing and metal cross

Grave No N8 (S) / 002

Name of deceased:	Elizabeth Sebothelo.
Age at death:	20's.
Date of death:	Unknown.
Name of family representative:	Piet Basoabile Sebothelo.
New Grave number:	Thaba Nchu Municipal Cemetery. No grave numbers are issued in this cemetery. The next-of-kin knows the location of the grave.
Location of grave:	The grave formed part of an informal cemetery situated on the Farm Midway 2631, near Bloemfontein, Free State Province.
Surface features of grave:	A single rock and a crude metal cross indicated the location of the grave. The grave had an east/west orientation. No headstone was present.
Grave goods:	None were found.
Measurements of grave pit:	2.1m (l) x 1m (w) x 1.6m (d).
Depth at which cultural remains were found:	Only coffin remains were found at a depth of 1.6m.
Depth at which human remains were found:	1.6m.
Burial position:	The individual was buried in a supine position in a coffin with the head at the western end. The head was slightly tilted to the right. Both arms were extended and were placed alongside the body. Both legs were also extended and were placed next to each other.
Description of human remains:	The remains were that of an adult female and were in a fair state of preservation.



Figure 2 – Grave N8/002, Dressing

Grave No N8 (S) / 003

Name of deceased:	Bettie Nombi Selikoe.
Age at death:	80's.
Date of death:	1998/11/07.
Name of family representative:	Piet Basoabile Sebothelo.
New Grave number:	Thaba Nchu Municipal Cemetery. No grave numbers are issued in this cemetery. The next-of-kin knows the location of the grave.
Location of grave:	The grave formed part of an informal cemetery situated on the Farm Midway 2631, near Bloemfontein, Free State Province.
Surface features of grave:	A single rock and a crude metal cross indicated the location of the grave. The grave had an east/west orientation. No headstone was present.
Grave goods:	None were found.
Measurements of grave pit:	2.1m (l) x 1m (w) x 1.7m (d).
Depth at which cultural remains were found:	A white plastic armband was found on the right wrist of the individual at a depth of 1.7m. Coffin remains were also found at a depth of 1.7m.
Depth at which human remains were found:	1.7m.
Burial position:	The individual was buried in a supine position in a coffin with the head at the western end. The head was slightly tilted to the left. Both arms were extended and were placed alongside the body. Both legs were also extended and were placed next to each other.
Description of human remains:	The remains were that of an adult female and were in a fair state of preservation.



Figure 3 – Grave N8/003, Dressing

Grave No N8 (S) / 004

Name of deceased:	Phiri Sebothelo.
Age at death:	Child.
Date of death:	1960's.
Name of family representative:	Piet Basoabile Sebothelo.
New Grave number:	Thaba Nchu Municipal Cemetery. No grave numbers are issued in this cemetery. The next-of-kin knows the location of the grave.
Location of grave:	The grave formed part of an informal cemetery situated on the Farm Midway 2631, near Bloemfontein, Free State Province.
Surface features of grave:	A single rock indicated the location of the grave. The grave had an east/west orientation. No headstone was present.
Grave goods:	None were found.
Measurements of grave pit:	1.8m (l) x 0.8m (w) x 1.6m (d).
Depth at which cultural remains were found:	Only coffin remains were found at a depth of 1.6m.
Depth at which human remains were found:	1.6m.
Burial position:	The individual was buried in a supine position in a coffin with the head at the western end. The head was slightly tilted to the left. Both arms were extended and were placed alongside the body. Both legs were also extended and were placed next to each other.
Description of human remains:	The remains were that of a teenager/young adult male and were in a fair state of preservation.



Figure 4 – Grave N8/004, Dressing

Grave No N8 (S) / 005

Name of deceased:	Unknown.
Age at death:	Unknown.
Date of death:	Unknown.
Name of family representative:	Unknown.
New Grave number:	Grave No N8 (S)/005, Stormlaan Municipal Cemetery, Bainsvlei, Bloemfontein. Note that the municipality is using the project number for their records.
Location of grave:	The grave formed part of an informal cemetery situated on the Farm Midway 2631, near Bloemfontein, Free State Province.
Surface features of grave:	A single rock indicated the location of the grave. The grave had an east/west orientation. No headstone was present.
Grave goods:	None were found.
Measurements of grave pit:	1.5m (l) x 0.8m (w) x 1.5m (d).
Depth at which cultural remains were found:	Only coffin remains were found at a depth of 1.5m.
Depth at which human remains were found:	1.5m.
Burial position:	The individual was buried in a supine position in a coffin with the head at the western end. The remains were not well preserved and a clear burial position could not be identified.
Description of human remains:	The remains were that of a child and were in a poor state of preservation.



Figure 5 – Grave N8/005, Dressing

Grave No N8 (S) / 006

Name of deceased:	Unknown.
Age at death:	Unknown.
Date of death:	Unknown.
Name of family representative:	Unknown.
New Grave number:	Grave No N8 (S)/006, Stormlaan Municipal Cemetery, Bainsvlei, Bloemfontein. Note that the municipality is using the project number for their records.
Location of grave:	The grave formed part of an informal cemetery situated on the Farm Midway 2631, near Bloemfontein, Free State Province.
Surface features of grave:	A single rock and a crude metal cross indicated the location of the grave. The grave had an east/west orientation. No headstone was present.
Grave goods:	None were found.
Measurements of grave pit:	2m (l) x 1m (w) x 1.65m (d).
Depth at which cultural remains were found:	The remains were covered with a piece of cloth inside the coffin, which was found at a depth of 1.6m.
Depth at which human remains were found:	1.6m.
Burial position:	The individual was buried in a supine position in a coffin with the head at the western end. Both arms were extended and were placed alongside the body. Both legs were also extended and were placed next to each other.
Description of human remains:	The remains were that of an adult and were in a fair state of preservation.



Figure 6 – Grave N8/006, Dressing

Grave No N8 (S) / 007

Name of deceased:	Unknown.
Age at death:	Unknown.
Date of death:	Unknown.
Name of family representative:	Unknown.
New Grave number:	
Location of grave:	The grave formed part of an informal cemetery situated on the Farm Midway 2631, near Bloemfontein, Free State Province.
Surface features of grave:	A single rock and a crude metal cross indicated the location of the grave. The grave had an east/west orientation. No headstone was present.
Grave goods:	None were found.
Measurements of grave pit:	2m (l) x 1m (w) x 1.65m (d).
Depth at which cultural remains were found:	The remains were covered with a piece of cloth inside the coffin at a depth of 1.65m.
Depth at which human remains were found:	1.65m.
Burial position:	The individual was buried in a supine position in a coffin with the head at the western end. Both arms were extended and were placed alongside the body. Both legs were also extended and were placed next to each other.
Description of human remains:	The remains were that of an adult and were in a fair state of preservation. The cranium of the individual was cut as done during a post mortem autopsy.



Figure 7 – N8/007, Dressing

Grave No N8 (S) / 008

Name of deceased:	Unknown.
Age at death:	Unknown.
Date of death:	Unknown.
Name of family representative:	Unknown.
New Grave number:	Grave No N8 (S)/008, Stormlaan Municipal Cemetery, Bainsvlei, Bloemfontein. Note that the municipality is using the project number for their records.
Location of grave:	The grave formed part of an informal cemetery situated on the Farm Midway 2631, near Bloemfontein, Free State Province.
Surface features of grave:	Two rocks on the surface indicated the location of the grave. The grave had an east/west orientation. No headstone was present.
Grave goods:	None were found.
Measurements of grave pit:	1.5m (l) x 0.8m (w) x 1.4m (d).
Depth at which cultural remains were found:	Only coffin remains were found at a depth of 1.4m.
Depth at which human remains were found:	1.4m.
Burial position:	The individual was buried in a supine position in a coffin with the head at the western end. The remains were not well preserved and a clear burial position could not be identified.
Description of human remains:	The remains were that of a child and were in a poor state of preservation.



Figure 8 – N8/008, Dressing

Grave No N8 (S) / 012

Name of deceased:	Unknown.
Age at death:	Unknown.
Date of death:	Unknown.
Name of family representative:	Unknown.
New Grave number:	Grave No N8 (S)/012, Stormlaan Municipal Cemetery, Bainsvlei, Bloemfontein. Note that the municipality is using the project number for their records.
Location of grave:	The grave formed part of an informal cemetery situated on the Farm Midway 2631, near Bloemfontein, Free State Province.
Surface features of grave:	A single rock indicated the location of the grave. The grave had an east/west orientation. No headstone was present.
Grave goods:	None were found.
Measurements of grave pit:	1.5m (l) x 0.8m (w) x 1.5m (d).
Depth at which cultural remains were found:	Only coffin remains were found at a depth of 1.5m.
Depth at which human remains were found:	1.5m.
Burial position:	The individual was buried in a supine position in a coffin with the head at the western end. The remains were not well preserved and a clear burial position could not be identified.
Description of human remains:	The remains were that of a child and were in a poor state of preservation.



Figure 9 – N8/012, Dressing

Grave No N8 (S) / 013

Name of deceased:	Unknown.
Age at death:	Unknown.
Date of death:	Unknown.
Name of family representative:	Unknown.
New Grave number:	Grave No N8 (S)/013, Stormlaan Municipal Cemetery, Bainsvlei, Bloemfontein. Note that the municipality is using the project number for their records.
Location of grave:	The grave formed part of an informal cemetery situated on the Farm Midway 2631, near Bloemfontein, Free State Province.
Surface features of grave:	A single rock indicated the location of the grave. The grave had an east/west orientation. No headstone was present.
Grave goods:	None were found.
Measurements of grave pit:	1.5m (l) x 0.8m (w) x 1.5m (d).
Depth at which cultural remains were found:	The remains were found wrapped in a blanket inside the coffin at a depth of 1.5m.
Depth at which human remains were found:	1.5m.
Burial position:	The individual was buried in a supine position in a coffin with the head at the western end. The remains were not well preserved and a clear burial position could not be identified. The remains were found wrapped in a blanket inside the coffin.
Description of human remains:	The remains were that of a child and were in a poor state of preservation.



Figure 10 – N8/013, Dressing

Grave No N8 (S) / 014

Name of deceased:	Unknown.
Age at death:	Unknown.
Date of death:	Unknown.
Name of family representative:	Unknown.
New Grave number:	Grave No N8 (S)/014, Stormlaan Municipal Cemetery, Bainsvlei, Bloemfontein. Note that the municipality is using the project number for their records.
Location of grave:	The grave formed part of an informal cemetery situated on the Farm Midway 2631, near Bloemfontein, Free State Province.
Surface features of grave:	A single rock indicated the location of the grave. The grave had an east/west orientation. No headstone was present.
Grave goods:	None were found.
Measurements of grave pit:	1.5m (l) x 0.8m (w) x 1.5m (d).
Depth at which cultural remains were found:	Only coffin remains were found at a depth of 1.5m.
Depth at which human remains were found:	1.5m.
Burial position:	The individual was buried in a supine position in a coffin with the head at the western end. The remains were not well preserved and a clear burial position could not be identified.
Description of human remains:	The remains were that of a child and were in a poor state of preservation.



Figure 11 – N8/014, Dressing

Grave No N8 (S) / 015

Name of deceased:	Unknown.
Age at death:	Unknown.
Date of death:	Unknown.
Name of family representative:	Unknown.
New Grave number:	Grave No N8 (S)/015, Stormlaan Municipal Cemetery, Bainsvlei, Bloemfontein. Note that the municipality is using the project number for their records.
Location of grave:	The grave formed part of an informal cemetery situated on the Farm Midway 2631, near Bloemfontein, Free State Province.
Surface features of grave:	A single rock indicated the location of the grave. The grave had an east/west orientation. No headstone was present.
Grave goods:	None were found.
Measurements of grave pit:	1.5m (l) x 0.8m (w) x 1.5m (d).
Depth at which cultural remains were found:	Only coffin remains were found at a depth of 1.5m.
Depth at which human remains were found:	1.5m.
Burial position:	The individual was buried in a supine position in a coffin with the head at the western end. The remains were not well preserved and a clear burial position could not be identified.
Description of human remains:	The remains were that of a child and were in a poor state of preservation.



Figure 12 – N8/015, Dressing

Grave No N8 (S) / 016

Name of deceased:	Unknown.
Age at death:	Unknown.
Date of death:	Unknown.
Name of family representative:	Unknown.
New Grave number:	Grave No N8 (S)/016, Stormlaan Municipal Cemetery, Bainsvlei, Bloemfontein. Note that the municipality is using the project number for their records.
Location of grave:	The grave formed part of an informal cemetery situated on the Farm Midway 2631, near Bloemfontein, Free State Province.
Surface features of grave:	A single rock indicated the location of the grave. The grave had an east/west orientation. No headstone was present.
Grave goods:	None were found.
Measurements of grave pit:	1.5m (l) x 0.8m (w) x 1.5m (d).
Depth at which cultural remains were found:	Only coffin remains were found at a depth of 1.5m.
Depth at which human remains were found:	1.5m.
Burial position:	The individual was buried in a supine position in a coffin with the head at the western end. The remains were not well preserved and a clear burial position could not be identified.
Description of human remains:	The remains were that of a child and were in a poor state of preservation.



Figure 13 – N8/016, Dressing

Grave No N8 (S) / 017

Name of deceased:	Maggie Dewee.
Age at death:	15 years.
Date of death:	1963.
Name of family representative:	Sarah Mieta Merwe.
New Grave number:	Grave No. N8 (S)/017, Suid Park Municipal Cemetery, Bloemfontein. Note that the municipality is using the project number for their records.
Location of grave:	The grave formed part of an informal cemetery situated on the Farm Midway 2631, near Bloemfontein, Free State Province.
Surface features of grave:	An oval shaped mound of packed rocks and soil formed the dressing of this grave. The grave had an east/west orientation. No headstone was present.
Grave goods:	None were found.
Measurements of grave pit:	2m (l) x 1m (w) x 1.65m (d).
Depth at which cultural remains were found:	Only coffin remains were found at a depth of 1.65m.
Depth at which human remains were found:	1.65m.
Burial position:	The individual was buried in a supine position in a coffin with the head at the western end. Both arms were flexed inwards and the hands were placed together in the lap. Both legs were extended and were placed next to each other.
Description of human remains:	The remains were that of a teenager/young adult and were in a fair state of preservation.



Figure 14 – N8/017, Dressing

6. CONCLUSION

During the relocation process human remains from fourteen graves were relocated on 29 – 30 June 2015 from the National Road 8 (N8) situated on the farm Midway 2631, near Bloemfontein, Free State. The overall preservation of the excavated human remains was very poor. The disinterred remains were reburied in the Thabu Nchu, Suid Park and Stormlaan Municipal Cemeteries. The next-of-kin of five of the graves were present at the exhumation and reinterment of the remains.

7. LITERATURE CITED

- Aufderheide, A.C. & Rodriguez-Martin, C. 1998. *The Cambridge Encyclopaedia of Human Paleopathology*. Cambridge: Cambridge University Press.
- Buikstra, J.E. & Ubelaker, D.H. 1994. Standards for data collection from human skeletal remains. *Arkansas Archaeological Survey Research Series*. no.: 44.
- De Villiers, H. 1968. *The skull of the South African Negro*. Johannesburg: Witwatersrand University Press.
- Ferembach, D., Schwidetzky, I. & Stloukal, M. 1980. Recommendations for age and sex diagnoses of skeletons. *Journal of Human Evolution*. 9:517-549.
- Hester, T.R. et.al. 1975. *A Guide to Field Methods in Archaeology*. Palo Alto.
- Joukowsky, M. 1980. *A Complete Manual of Field Archaeology*. Engelwood Cliffs.
- Krogman, W.M. & Iscan, M.Y. 1986. *The Human Skeleton in Forensic Medicine*. Springfield: Charles C. Thomas.
- Loth, S. & Henneberg, M. 1996. Mandibular ramus flexure: a new morphologic indicator of sexual dimorphism in the human skeleton. *American Journal of Physical Anthropology*. 99:473-485.
- Olivier, G Aaron C, Fully G, Tissier G. 1978. New estimation of stature and cranial capacity in modern man. *Journal of Human Evolution* 7:513-518.
- Morse, D. (ed.). 1978. *Handbook of Forensic Archaeology and Anthropology*. Tallahassee.
- Nienaber, W.C. 1997. Exhumation and Reinterment of Burgher C.G. Naude. *South African Journal of Culture History*. 11(1):123-133.
- Nienaber, W.C. and Steyn, M. 1999. Exhumation and Analysis of the Remains of a Black Native Participant in the Anglo-Boer war (1899-1902), KwaZulu-Natal. *South African Journal of Culture History*. 13(2):94-110.
- Ortner, D.J. & Putschar, W.G.J. 1981. *Identification of pathological conditions in human skeletal remains*. Washington, D.C.: Smithsonian Institution Press.
- Scheuer, L. & Black, S. 2000. *Developmental Juvenile Osteology*. San Diego: Academic Press.
- Steinbock, R.T. 1976. *Paleopathological diagnosis and interpretation*. Illinois: Charles C. Thomas.
- Steyn, M., Nienaber, W.C. and Iscan, M.Y. 2000. Excavation and Retrieval of Forensic Remains. In: Siegel, J.A., Saukko, P.J. and Knupfer, G.C. (eds.). *Encyclopaedia of Forensic Sciences*. Sidcup: Academic Press. 235-242.
- Steyn, M. & Iscan M.Y. 1999. Osteometric variation in the humerus: sexual dimorphism in South Africans. *Forensic Science International*. 106(2):77-85
- Steyn, M., Iscan, M.Y. 1997. Sex determination from the femur and tibia in South African whites. *Forensic Science International* 90:111-119

- Steyn, M., Iscan, M.Y. 1998. Sexual dimorphism of the crania and mandibles of South African whites. *Forensic Science International* 98:9-16
- Steyn, M., Meiring, J.H., Nienaber, W.C. & Loots, M. 2002. Large fontanelles in an early 20th century rural population from South Africa. *International Journal of Osteoarchaeology* 12:291-296.

**APPENDIX A
LOCALITY MAPS**

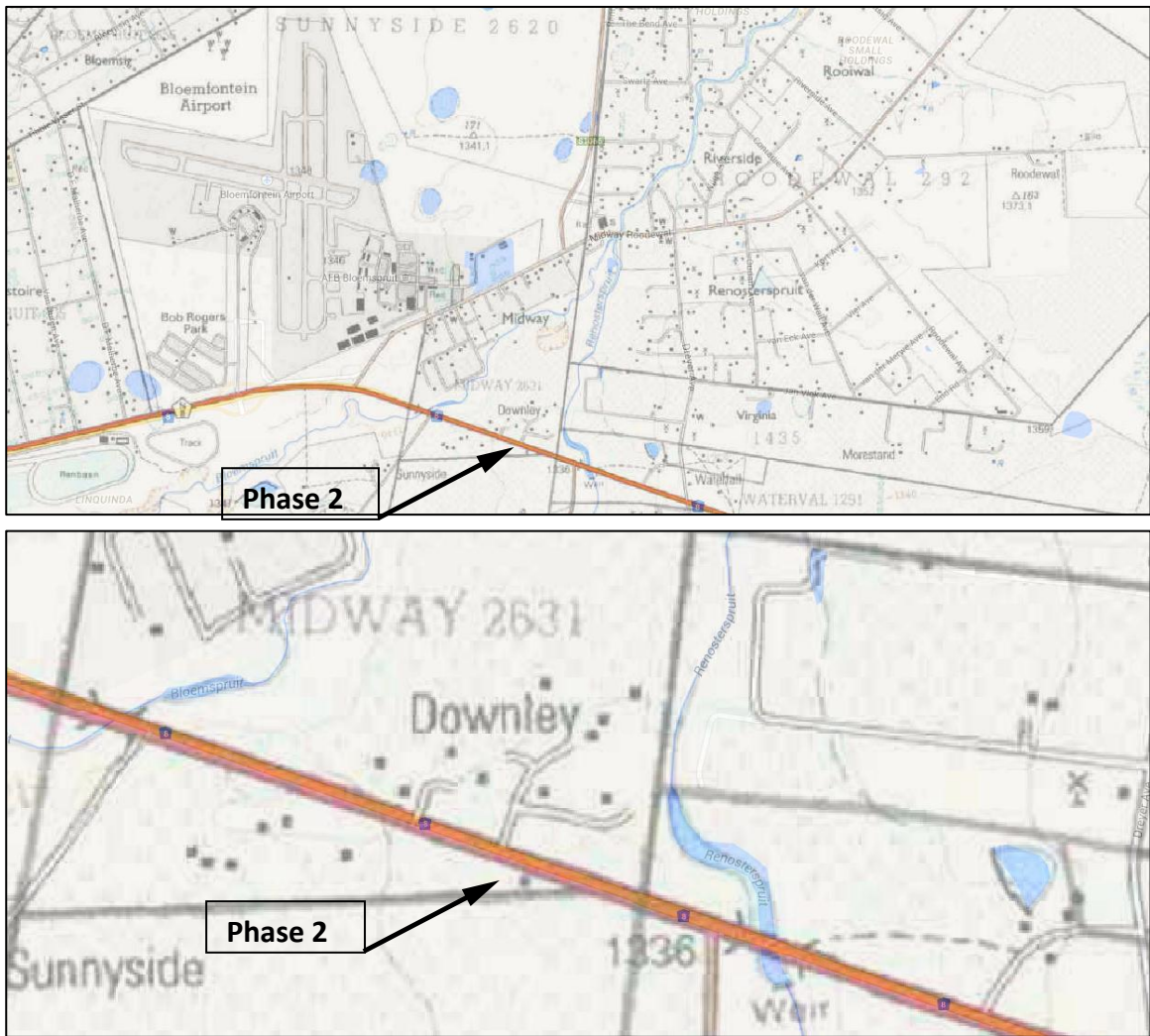


Figure 15 – General Locality Map

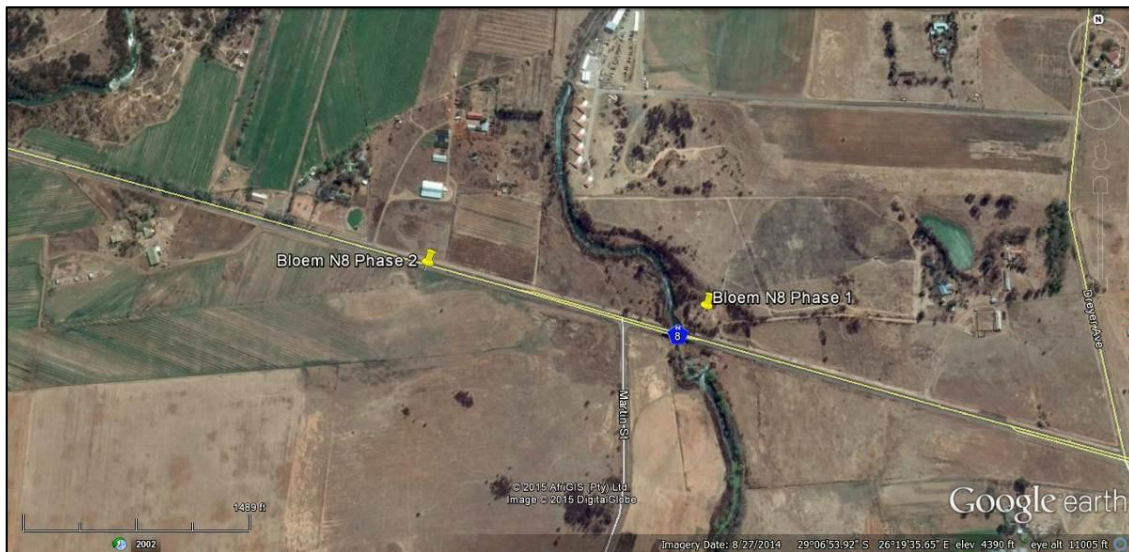
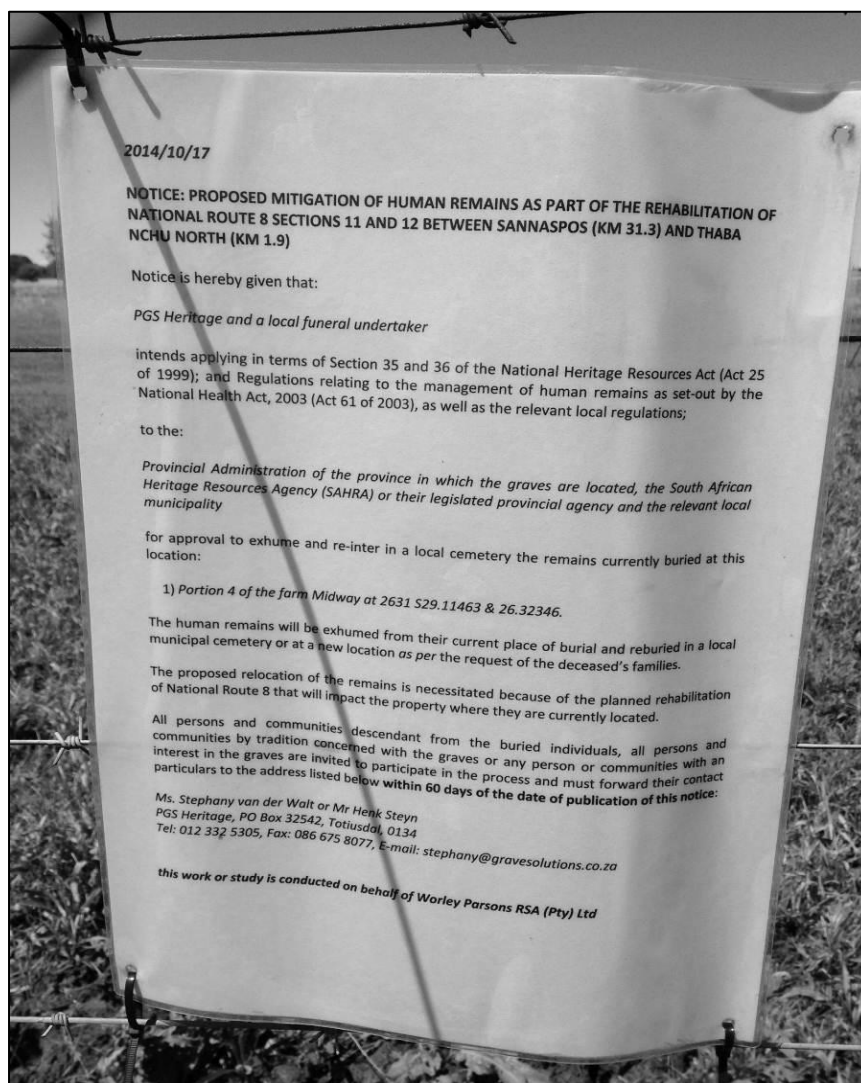


Figure 16 - Approximate location of the cemetery (yellow marker at phase 2)

APPENDIX B
SITE NOTICE



CLASSIFIEDS

exclusively online at

Where buyers meet sellers
www.olx.co.za

1 533 7670 □ CT: 021 406 2759 □ PE: 041 398 0327 □ BLOEM: 051 404 7603

BALISTS
1435

GUARANTEE
Magic Waist
all humans, Tie
h around your
overcome pro-
ke: *Financial
marriage/ Relati-
Work promotion
*Cort cases
luck & Say bye
nfinished jobs.
Come, First
serve"

DR BLACK MAMBA
From East-Africa

Mail order & delivery
I can help finish
unfinished jobs left
by others.

- Quick results
- Financial problems
- Get a job
- Marriage and divorce problems
- Promotions
- Relationships

Baba Khulu Matiyasi
All the problems is R200
% Guaranteed sameday.
Enlargement using
Ngomoli oil to see results
in minutes R120. Get
marriage quickly to the
person you want to marry
R100.To hire short Boys to
Bring money in your
house. Bring back lost
lover in 15 minutes R150.
Borrow lucky wallet, get
rich with luck and short
boys R270. Treak stroke,
win court cases and get
promotion at work, get

CHIEF MASUKU
0729474319WE DO HELP MAN-
KINDS PERBLEMS: ALL JOBS COME
WITH 100% SPECIALIST IN LOVE
PROBLEMS, TO BRING BACK YOUR
LOST LOVERS AND MAKE THEM
YOURS FOREVER, TO PUT HER/HIM
UNDER YOUR FEET AND LISTEN TO
YOU IN EVERYTHING YOU SAY, TO
MAKE YOUR LOVE APOLOGISE AND
LISTEN WHEN HE/HER IS WRONG
TO MAKE YOUR LOVER FORGET HIS
OR HER PAST ALSO HAVE STUFF
FOR WOMAN TO MAKE IT DRY AND
SWEET, TO BRING BACK LOST
LOVER TAKES ONLY 10 MINUTES,
PENIS ENLARGEMENT ANY SIZE
YOU WANT WITHIN 10 MINUTES
AND WEAK ERECTION, BOOST YOUR
BUSINESS AND ATTRACT MORE CL-
IENTS. WIN DIFFERENT KINDS OF
GAMBLING GAMES COURT CASES
NO MATTER HOW BIG, FINANCIAL
PROBLEMS, SHORT BOYS TO BRING
MONEY IN YOUR HOUSE, RECOVER
STOLEN PROPERTY, GET PROMOT-
ION AT WORK AND GET DOUBLE

CASH FOR
• All insurance policies •
Restricted policies • Fixed
deposits • Unit trusts •
011 4504622/072-7710926

GENERAL NOTICES
4010

NOTICE: PROPOSED MITIGATION OF HUMAN REMAINS AS PART OF THE REHABILITATION OF NATIONAL ROUTE 8 SECTIONS 11 AND 12 BETWEEN SANNASPOS (KM 31.3) AND THABA NCHU NORTH (KM 1.9)

Notice is hereby given that: PGS Heritage and a local funeral undertaker intends applying in terms of Section 35 and 36 of the National Heritage Resources Act (Act 25 of 1999); and Regulations relating to the management of human remains as set-out by the National Health Act, 2003 (Act 61 of 2003), as well as the relevant local regulations to the Provincial Administration of the province in which the graves are located, the South African Heritage Resources Agency (SAHRA) or their legislated provincial agency and the relevant local municipality for approval to exhume and re-inter in a local cemetery the remains currently buried at this location:

1) Portion 4 of the farm Midway at 2631 S29.11463 & 26.32346.

The human remains will be exhumed from their

BRIDGING CASH
While waiting for
PENSION
PACKAGE
PAYOUT
Lumpsum only

NOTICE: PROPOSED MITIGATION OF HUMAN REMAINS AS PART OF THE REHABILITATION OF NATIONAL ROUTE 8 SECTIONS 11 AND 12 BETWEEN SANNASPOS (KM 31.3) AND THABA NCHU NORTH (KM 1.9)

Notice is hereby given that: PGS Heritage and a local funeral undertaker intends applying in terms of Section 35 and 36 of the National Heritage Resources Act (Act 25 of 1999); and Regulations relating to the management of human remains as set-out by the National Health Act, 2003 (Act 61 of 2003), as well as the relevant local regulations to the Provincial Administration of the province in which the graves are located, the South African Heritage Resources Agency (SAHRA) or their legislated provincial agency and the relevant local municipality for approval to exhume and re-inter in a local cemetery the remains currently buried at this location:

1) Portion 4 of the farm Midway at 2631 S29.11463 & 26.32346.

The human remains will be exhumed from their current place of burial and reburied in a local municipal cemetery or at a new location as per the request of the deceaseds families. The proposed relocation of the remains is necessitated because of the planned rehabilitation of National Route 8 that will impact the property where they are currently located.

All persons and communities descendant from the buried individuals, all persons and communities by tradition concerned with the graves or any person or communities with an interest in the graves are invited to participate in the process and must forward their contact particulars to the address listed below within 14 days of the date of publication of this notice:

Ms. Stephany van der Walt or Mr Henk Steyn
PGS Heritage, PO Box 32542, Totiusdal, 0134
Tel: 012 332 5305,
Fax: 086 675 8077,
E-mail: stephany@gravesolutions.co.za

this work or study is conducted on behalf of
Worley Parsons RSA (Pty) Ltd

TSEBISO: TSHISINYO E BUELLANG HORE MASAPO A BAFU A DULE E LE KAROLO YA TLHABOLLO YA MMILA WA NATIONAL ROUTE 8, DIKAROLO TSA 11 LE 12 PAKENG TSA SANNASPOS (KM 31.3) LE THABA NCHU NORTH (KM 1.9)

Mona ho fanwa ka tsebisio ya hore: PGS Heritage le mokgatlo wa lepatlo wa sebaka sena o ikemiseditse ho etsa kopo ho ya ka Karolo ya 35 le 36 ya Molao wa Naha wa Mafa (Molao wa 25 wa 1999); le Melawana e amanang le taolo ya masapo a bafu jwaloka ha o ngotswe Molaong wa Naha wa Bophelo ho Botle, 2003 (Molao wa 61 wa 2003), hammoho le melawana ya sebaka sena e amanang le ona ho: Botsamaisi ba Provinse ya provinse eo mabilla a leng ho yona, South African Heritage Resources Agency (SAHRA) kapa lekgotla la molao la provinse le mmasepala wa sebaka seo ya amehang ho tjhekolla le ho kena hape dirapeng tsa mabilla a nang le masapo a bafu bao hona jwale ba patilweng sebakeng sena:

1) Karolo ya 4 ya polasi e mane Midway 2631 S29.11463 le 26.32346.

Masapo a bafu a tla tjhekollwa ho tloha sebakeng sa bona sa hona jwale sa mabilla le ho patwa hape dirapeng tsa mmasepala kapa sebakeng se haufi le moo ho ya ka kopo ya malapa a bo mofu. Ho tloswa le ho iswa ha masapo ana a bafu ho sisinnwang ke ka lebaka la ho hlabolwa ho rerilweng ha mmila wa National Route 8 ho tla ama sebakeng seo masapo ana a bafu a leng ho sona hona jwale.

Batho kaofela le metse e tswang sebakeng sena sa dirapa tsa mabilla, batho kaofela le metse e ka setso e amehileng ka dirapa tsena tsa mabilla kapa motho ofe kapa ofe kapa metse e nang le thahasello mabapi le dirapa tsena tsa mabilla o mengwa hore ba nke karolo tshabetsong ena mme ba tshwanetse ho romela dintlha tsa bona tsa boiteanyo atereseng e ngotsweng mona ka tlase nakong ya matsatsi a 14 ka mora ho hatiswa ha tsebisio ena:

Mof. Stephany van der Walt
kapa Mr Henk Steyn
PGS Heritage, PO Box 32542, Totiusdal, 0134
Mohlala: 012 332 5305,
Fekse: 086 675 8077,
Imeile: stephany@gravesolutions.co.za

mosebetsi ona kapa phuputso e tsamaiswa
lebitsong la Worley Parsons RSA (Pty) Ltd

<p>News</p> <hr/> <p>Fund for Business Growth</p> <p>Are you experiencing growth or do you have a contract to supply any department or company with products or services that need:</p> <ul style="list-style-type: none"> • Additional equipment or machinery • Improved systems or processes • Business development support <p>Seshupo Management Services can assist your company free of charge, if it qualifies, to secure the required funding which is on a cost-sharing basis with the funder.</p> <p>For more details call 083 244 7937 or 051 449 9966 / email cure@mweb.co.za or visit us at Transnet premises, Nathan street, Bloemfontein.</p>	<p style="text-align: center;">MANGAUNG ISSUE</p> <hr/> <p style="text-align: center;">Vacancies ISSUE</p> <p>Issue is growing, and we are looking for great people to introduce our services to local businesses. If you are:</p> <ul style="list-style-type: none"> * Honest * Ambitious * Highly Motivated * Hard working * A good communicator in English & Afrikaans <p>And would like to join our growing company, bring your CV personally to the Issue office at:</p> <p style="text-align: center;">1st Floor, 35 Zastron Street, Bfn (Opposite Phakisa Kwikfit)</p>	<p>Engen Curie to Crossing 15km held</p>  <p>Bloemfontein Striders held their third Engen Curie to Crossing 15km Road Run on 8 November. The race has grown in the past two years with more athletes entering the race.</p> <p>Pule Hlabahla, who was running as an individual athlete</p>	<p>lina Njeya who competed in a marathon a week ago. The marathon drained everything from Njeya and</p> <p>Moeketsi didn't have any other challengers. She set and maintained the pace in the Ladies' race to win in a time of 54:44.</p> <p><i>In Photo: Race Winner Pule Hlabahla in action.</i> By Khothatso Mokone</p>
<p>Notice: PROPOSED MITIGATION OF HUMAN REMAINS AS PART OF THE REHABILITATION OF NATIONAL ROUTE 8 SECTIONS 11 AND 12 BETWEEN SANNASPOS (KM 31.3) AND THABA NCHU NORTH (KM 1.9)</p> <p>Notice is hereby given that: PGS Heritage and a local funeral undertaker intends applying in terms of Section 35 and 36 of the National Heritage Resources Act (Act 25 of 1999); and Regulations relating to the management of human remains as set-out by the National Health Act, 2003 (Act 61 of 2003), as well as the relevant local regulations to the: <i>Provincial Administration of the province in which the graves are located, the South African Heritage Resources Agency (SAHRA) or their legislated provincial agency and the relevant local municipality for approval to exhume and re-inter in a local cemetery the remains currently buried at this location:</i></p> <p>1) Portion 4 of the farm Midway at 2631 S29.11463 & 26.32346.</p> <p>The human remains will be exhumed from their current place of burial and reburied in a local municipal cemetery or at a new location as per the request of the deceased's families.</p> <p>The proposed relocation of the remains is necessitated because of the planned rehabilitation of National Route 8 that will impact the property where they are currently located.</p> <p>All persons and communities descendant from the buried individuals, all persons and communities by tradition concerned with the graves or any person or communities with an interest in the graves are invited to participate in the process and must forward their contact particulars to the address listed below within 14 days of the date of publication of this notice:</p> <p>Ms. Stephany van der Walt or Mr Henk Steyn PGS Heritage, PO Box 32542, Totiusdal, 0134 Tel: 012 332 5305 Fax: 086 675 8077, E-mail: stephany@gravesolutions.co.za</p> <p><i>this work or study is conducted on behalf of Worley Parsons RSA (Pty) Ltd</i></p>		<p>Notice: PROPOSED MITIGATION OF HUMAN REMAINS AS PART OF THE REHABILITATION OF NATIONAL ROUTE 8 SECTIONS 11 AND 12 BETWEEN SANNASPOS (KM 31.3) AND THABA NCHU NORTH (KM 1.9)</p> <p>Notice is hereby given that: PGS Heritage and a local funeral undertaker intends applying in terms of Section 35 and 36 of the National Heritage Resources Act (Act 25 of 1999); and Regulations relating to the management of human remains as set-out by the National Health Act, 2003 (Act 61 of 2003), as well as the relevant local regulations to the: <i>Provincial Administration of the province in which the graves are located, the South African Heritage Resources Agency (SAHRA) or their legislated provincial agency and the relevant local municipality for approval to exhume and re-inter in a local cemetery the remains currently buried at this location:</i></p> <p>1) Karolo ya 4 ya polasi e mane Midway 2631 S29.11463 le 26.32346.</p> <p>Masapo a bafu a tla tshelwa ho tloha sebakeng sa bona sa hona jwale sa mabitla le ho patwa hape dirapeng tsa mmasepala kapa sebakeng se haufi le moo ho ya ka kopo ya malapa a bo mofu. Ho tloswa le ho iswa ha masapo ana a bafu ho sisinyang ke ka lebaka la ho hlalolwa ho rerilweng ha mmila wa National Route 8 ho tla ama sebakeng seo masapo ana a bafu a leng ho sona hona jwale.</p> <p>Batho kaofela le metse e tswang sebakeng sena sa dirapa tsa mabitla, batho kaofela le metse e ka setso e amehileng ka dirapa tse na tsa mabitla kapa motho ofe kapa ofe kapa metse e nang le thahasello mabapi le dirapa tse na tsa mabitla o mengwa hore ba nke karolo tsebetse ena mme ba tshwanetse ho romela dintlha tsa bona tsa boiteanyo atereseng e ngotsweng mona ka tlase nakong ya matsatsi a 14 ka mora ho hatiswa ha tsebisano ena:</p> <p>Mof. Stephany van der Walt kapa Mr Henk Steyn PGS Heritage, PO Box 32542, Totiusdal, 0134 Mohala: 012 332 5305, Fekse: 086 675 8077, Imeile: stephany@gravesolutions.co.za</p>	

**APPENDIX D
CONFIRMATION OF RADIO BROADCAST**

232303
PGS HERITAGE 0000168769

PO Box 32542

South Africa

0186
GP



Pretoria
P O Box 12600

Silverton
South Africa
Telephone:
Fax:

ORDER 6-001007673	<u>Date</u>	<u>Advertiser/Campaign</u>	<u>Period</u>	<u>Contact Detail</u>
	10/03/2015	232303 - PGS HERITAGE 0000168769 Grave Solutions/SS	11/03/2015 - 15/03/2015	Robyn

No. of services and activities for this order: 0 *Payment Form:*
No. of lines for this order: 2 *Payment Terms: 30 Days*

Order Line: 1 **Schedule by:** Daypart
Period: 11/03/2015 - 15/03/2015 **Place:** Anywhere **Ad Type:** Regular

Ordered Schedule:

Time Band	Leng.	M	T	W	T	F	S	S	Total Units	Unit Price	Unit Disc.	Unit Net Price	Total Price
<i>Lesedi - Weeks of</i>									1				
<i>09/03/2015</i>													
12:00 - 15:00	30						1			1,950.00	0.00	1,950.00	1,950.00
18:00 - 21:00	30			1	1	1				2,400.00	0.00	2,400.00	7,200.00
1 Weeks									4				9,150.00

Order Line: 2 **Schedule by:** Daypart
Period: 11/03/2015 - 15/03/2015 **Place:** Anywhere **Ad Type:** Added Value

Ordered Schedule:

Time Band	Leng.	M	T	W	T	F	S	S	Total Units	Unit Price	Unit Disc.	Unit Net Price	Total Price
<i>Lesedi - Weeks of</i>									1				
<i>09/03/2015</i>													
12:00 - 15:00	30							1		1,890.00	1,890.00	0.00	0.00
12:00 - 15:00	30						1			1,950.00	1,950.00	0.00	0.00
18:00 - 21:00	30			2	1	1				2,400.00	2,400.00	0.00	0.00
1 Weeks									6				0.00

Monthly Sub-Totals

Month	Quantity	Net
March 2015	10	9,150.00

Total Advertising	9,150.00
Total Other Services	0.00
Total	9,150.00
Order Discount	0.00
Total	9,150.00

E1. SAHRA Permit

Bloemfontein N8 Graves

Our Ref:

Enquiries: Itumeleng Masiteng
Tel: 012 320 8490
Email: imasiteng@sahra.org.za
CaseID: 7435

Date: Friday April 10, 2015
Page No: 1

PermitID: 2015



PERMIT: Remove from its original position

In terms of Section 36(3) of the National Heritage Resources Act (Act 25 of 1999)

Permit Holder: Mr Henk Steyn
PGS Heritage and Grave Relocation Consultants
PO Box 32542
Totiusdal
0134

Site: Cemetery, Farm Midway 2631, Free State Province (National Route 8)

Conditions: The relocation of possibly 20 graves from an informal farm cemetery situated within the area demarcated for the expansion of the National Route 8.

1. If the permit holder is not to be present on the site at all times then the heritage authority must be provided with the names and qualifications of the authorised representatives.
2. Adequate recording methods as specified in the Regulations and Guidelines pertaining to the National Heritage Resources Act must be employed. Note that the position of all excavations and objects collected must be marked on a plan of site.
3. A standard site record form must be lodged on SAHRIS
4. Human remains must at all times be handled with respect and graves should not be disturbed except where unavoidable. The consultation procedures as indicated in the Regulations and the National Heritage Resources Act must be observed as appropriate. The recommendations for removal of graves and exhumations and for re-burial stipulated in SAHRA's Policy 'What to do when graves are uncovered', section 3, must be observed as far as possible. A report on the specimens recovered and their origin must be submitted to the heritage authority annually on or before 15 April 2016 for the duration of the permit.
5. All remains recovered, including relics and artefacts, must be kept with the skeletal material and reburied at local municipal cemetery including the Thaba Nchu cemetery.
6. Reprints of all published papers or copies of theses and/or reports resulting from this work must be lodged with the relevant provincial heritage authority and SAHRA.
7. If a published report has not appeared within three years of the lapsing of this permit, the report required in terms of the permit will be made available to researchers on request.
8. It is the responsibility of the permit holder to obtain permission from the landowner for each visit, and conditions of access imposed by the landowner must be observed.
9. It is the responsibility of the permit holder to fill in excavations and protect sites during and after excavation to the satisfaction of the heritage authority and the landowner.
10. The heritage authority shall not be liable for any losses, damages or injuries to persons or properties as a result of any activities in connection with this permit.
11. The heritage authority reserves the right to cancel this permit by notice to the permit holder.

This permit is valid from **10/04/2015 to 29/04/2016**.



The South African Heritage Resources Agency

Street Address: 111 Harrington Street, Cape Town 8000 * Postal Address: PO Box 4637, Cape Town 8000
* Tel: +27 21 462 4502 * Fax: +27 21 462 4509 * Web: <http://www.sahra.org.za>

Bloemfontein N8 Graves

Our Ref:

Enquiries: Itumeleng Masiteng
Tel: 012 320 8490
Email: imasiteng@sahra.org.za
CaselD: 7435

Date: Friday April 10, 2015
Page No: 2

PermitID: 2015



an agency of the
Department of Arts and Culture

Itumeleng Masiteng
Heritage Officer: BBG Permitting
South African Heritage Resources Agency

Mimi Seetelo
Manager: Burial Grounds & Graves Unit
South African Heritage Resources Agency

Additional Info:

Please note that this permit may be suspended should an appeal against the decisions be received by SAHRA within 14 days from the date of the permit. SAHRA may not be held responsible for any costs or losses incurred in the event of the suspension or retraction of this permit.



The South African Heritage Resources Agency

Street Address: 111 Harrington Street, Cape Town 8000 * Postal Address: PO Box 4637, Cape Town 8000
* Tel: +27 21 462 4502 * Fax: +27 21 462 4509 * Web: <http://www.sahra.org.za>

E2. THE DEPARTMENT OF COOPERATIVE GOVERNANCE AND TRADITIONAL AFFAIRS



cooperative governance
and traditional affairs
Department of Cooperative Governance
and Traditional Affairs
FREE STATE PROVINCE

A11/2
Enquiries: Yolandi Housego
Email: Yolandi@fscogta.gov.za

Tel: 051 – 4076735
Fax: 086 205 1008

Martins Funeral Undertakers
38 Exton Road
Hilton
Bloemfontein

Mail: henk@gravesolutions.co.za; jaco.lamprecht@mangaung.co.za

Sir/Madam

APPROVAL FOR THE EXHUMATION, REMOVAL AND RE-INTERMENT OF MORTAL REMAINS

1. Approval is hereby granted to **Martins Funeral Undertaker**, to exhume the mortal remains of **16 unidentified graves**, buried at the **informal cemetery on the farm, Midway 2631, Bloemfontein**, and the removal thereof to be reburied at **Stormlaan Cemetery, Bainsvlei** on the following conditions:
 - i. Whenever an exhumation takes place, the officer in charge must inform the Provincial Commissioner of the South African Police Services.
 - ii. A member of the South Africa Police Services must always be present when an exhumation is being conducted.
 - iii. The removal of human remains shall be carried out under the supervision of an Environmental Health Practitioner of the relevant health authority(municipality) in whose area of jurisdiction the remains are to be buried , if the relevant health authority does not have the services of an Environmental Health Practitioner at the time, such health authority may request the services of an Environmental Health Practitioner of another health authority or an Environmental Health Practitioner in private practice, registered with HPCSA as an Environmental

P.O Box 211, Bloemfontein, 9300
Lebohang Building, 7th Floor, cnr St Andrews and Markgraaf Streets, Bloemfontein, 9300

www.fs.gov.za



cooperative governance
and traditional affairs
Department of Cooperative Governance
and Traditional Affairs
FREE STATE PROVINCE

A11/2
Enquiries: Yolandi Housego
Email: Yolandi@fscogta.gov.za

Tel: 051 – 4076735
Fax: 086 205 1008

Martins Funeral Undertakers
38 Exton Road
Hilton
Bloemfontein

Mail: henk@gravesolutions.co.za; jaco.lamprecht@mangaung.co.za

Sir/Madam

APPROVAL FOR THE EXHUMATION, REMOVAL AND RE-INTERMENT OF MORTAL REMAINS

1. Approval is hereby granted to **Martins Funeral Undertaker**, to exhume the mortal remains of the late **1) Hendrik Sebothelo, 2) Elizabeth Sebothelo, 3) Betty Nombi Selikoe and 4) Phiri Sebothelo**, buried at the **informal cemetery on the farm, Midway 2631, Bloemfontein**, and the removal thereof to be reburied at **Zone 4, Thaba Nchu**, on the following conditions:
 - i. Whenever an exhumation takes place, the officer in charge must inform the Provincial Commissioner of the South African Police Services.
 - ii. A member of the South Africa Police Services must always be present when an exhumation is being conducted.
 - iii. The removal of human remains shall be carried out under the supervision of an Environmental Health Practitioner of the relevant health authority(municipality) in whose area of jurisdiction the remains are to be buried , if the relevant health authority does not have the services of an Environmental Health Practitioner at the time, such health authority may request the services of an Environmental Health Practitioner of another health authority or an Environmental Health Practitioner in private practice, registered with HPCSA as an Environmental

P.O Box 211, Bloemfontein, 9300
Lebahang Building, 7th Floor, cnr St Andrews and Markgraaf Streets, Bloemfontein, 9300

www.fs.gov.za

E3. Letter Notifying SAPS Bloemspruit



16 March 2015

SAPS
4 Denne Avenue
Bloemspruit
9364

PO Box 19001
Bloemspruit
9364

Tel: 051 503 4026
bloemspruitstationcomander@saps.gov.za
Bloemspruit-SAPS@saps.gov.za

Fax: 051-503 4004/29/22/24

ATT: Bloemspruit Station Commander

Dear Col. Boo!

NOTICE OF RELOCATION OF THE REMAINS OF APPROX. 20 GRAVES FROM THE FARM MIDWAY 2631, FREESTATE PROVINCE

BACKGROUND INFORMATION

Our company has been appointed by Worley Parsons (Pty) Limited, to effect the relocation of graves from one farm cemetery within the area demarcated the expansion of the National Route 8. We will be assisted on this project by Martins Funeral Undertakers. The public consultation process, to identify next of kin for the graves, commenced on 11 November 2014. We will be assisted on this project by a Martins Funerals Bloemfontein. The public consultation process, to identify next of kin for the graves, commenced on 11 November 2014.

EXCAVATION SCHEDULE

Please be advised that according to the newly promulgated health regulations (published in May 2013), a SAPS Officer must be on site during the exhumation of the remains.

The exhumations are scheduled to take place between **29 – 30 June 2015**. During this 2 day period, we will be on site at **07h00 every morning**. A full schedule has been attached (Appendix A).

LOCATION OF GRAVES

The graves are situated on the Midway Farm 2631 (Appendix B) and are located within the demarcated area for the expansion of the National Route 8 road on the southern side of the road, at the following coordinates: -29.11463; 26.32346.

PERMITS AND PERMISSIONS

We have received the relevant permits and permissions from the following institutions/compliance

Professional Grave Solutions (Pty) Ltd | Reg. No. 2003/008940/07 | Director: H6 Steyn, PD Bikholtz, W Foule
Tel: 012 332 5305 | Fax: 086 675 8077 | PO Box 32542, Tokai, 0134 | henk@gravesolutions.co.za | 906 Bergarend Street, Waverley, Pretoria
www.gravesolutions.co.za

agencies:

- The South African Heritage Resources Agency (SAHRA) as required by Section 36 of Act 25 of 1999
 - Relocation Permit (Appendix C)
- The Department of Cooperative Governance and Traditional affairs
 - Permission to relocate human remains as requested by the next of kin (Appendix D)

I understand that the following permits were applied for and received by yourself through the Mangaung Metro Municipality.

- Free State Health Department
 - Relocation Permit
- The Mangaung Metropolitan Municipality
 - Permission to rebury human remains as requested by the next of kin
- The SAPS Bloemfontein
 - Notice to exhume and rebury and request to be present on site during the process

REBURIAL OF REMAINS

The Sebothelo family requested that their four relative be reinterred in Thaba Nchu Cemetery. The unknown graves will be buried in the closest municipal cemetery, Stormlaan Cemetery in Bainsvlei as stipulated in the CoGTA permit. Full details of how the graves were reburied in the same manner as previously found will be submitted in the excavation report to SAHRA.

Martins Funerals (Bloemfontein) will be responsible for the handling and reburial of the exhumed human remains.

Please do not hesitate to contact me should you need any additional information.

Yours sincerely,



Stephany van der Walt
Project Administrator
Cell: 083 570 1722
LIST OF APPENDICES

APPENDIX A – Exhumation Schedule

APPENDIX B – Locality Plans of Phase 2

APPENDIX C – The South African Heritage Resources Agency Permit

APPENDIX D – The Department Of Cooperative Governance and Traditional Affairs

**APPENDIX F
SITE LAYOUT MAP**

