

**SAHRIS**

**ATTENTION: BERNADET PAWANDIWA**

Dear Bernadet,

**PROPOSED UPGRADING OF DISTRICT ROAD D1851, NDUMO AREA, JOZINI LOCAL MUNICIPALITY, NORTHERN KWAZULU-NATAL (EDTEA REF: DC27/0018/2014)**

Terratest (Pty) Ltd has been appointed by Royal Haskoning DHV (Pty) Ltd, on behalf of the KwaZulu-Natal Department of Transport, to undertake the environmental services required for the proposed upgrading of the D1851, also referred to as the Ndumo Ring Road, Jozini Local Municipality, UMkhanyakude District Municipality, Northern KwaZulu-Natal.

The proposed project will include the upgrading and black top surfacing of the existing D1851 road, which is currently comprised of gravel. The D1851 is proposed to be widened from 5m to 7m and may include the installation of sidewalks where necessary. The existing pipe and box culverts evident along the road will also be upgraded, or replaced, during construction. Based on the above, the Applicant is to obtain Environmental Authorisation from the Provincial Department of Economic Development, Tourism and Environmental Affairs (EDTEA) prior to construction commencing. Further, as the upgrading of the D1851 will cross several watercourses, and as water will be abstracted for construction purposes, a Water Use Licence Application will be made to the Department of Water and Sanitation (DWS), upon receipt of a positive Environmental Authorisation (presuming such).

The Ndumo Ring Road falls within the 5km buffer of the Ndumo Game Reserve, as illustrated in Appendix 1. Based on the proposed upgrade activities, as well as the proximity to the Ndumo Game Reserve, a Basic Assessment Process will be undertaken, in accordance with the National Environmental Management Act (Act 107 of 1998) and the Environmental Impact Assessment Regulations (2010), as amended. The following Listed Activities are triggered in this regard:

- GN R 544 - Item 11: *"The construction of (iii) bridges; (vi) bulk stormwater outlet structures; (xi) infrastructure or structures covering 50 square metres or more; where such construction occurs within a watercourse or within 32 metres of a watercourse, measured from the edge of a watercourse, excluding where such construction will occur behind the development setback line."*
- GN R 544 – Item 18: *"The infilling or depositing of any material of more than 5 cubic metres into, or the dredging, excavation, removal or moving of soil, sand, shells, shell grit, pebbles or rock or more than 5 cubic metres from (i) a watercourse."*
- GN R 544 – Item 22: *"The construction of a road, outside urban areas (i) with a reserve wider than 13,5 meters; (ii) where no reserve exists where the road is wider than 8 metres; (iii) or for which an Environmental Authorisation was obtained for the route determination; in terms of Activity 5 in NGR 387 of 2006 or Activity 18 in Notice 545 of 2010."*

- GN R 544 – Item 39: *“The expansion of (iii) bridges and / or; (v) bulk stormwater outlet structures within a watercourse or within 32 metres of a watercourse, measured from the edge of a watercourse, where such expansion will result in an increased development footprint but excluding where such expansion will occur behind the development setback line.”*
- GN R 544 – Item 40: *“The expansion of (iv) infrastructure by more than 50 square metres or more within a watercourse or within 32 metres of a watercourse, measured from the edge of a watercourse, but excluding where such expansion will occur behind the development setback line.”*
- GN R 546 – Item 16: *“The construction of (iv) infrastructure covering 10 square metres or more where such construction occurs within a watercourse or within 32 metres of a watercourse, measured from the edge of a watercourse, excluding where such construction will occur behind the development setback line (a) in KwaZulu-Natal (ii) outside urban areas, in (hh) areas within 10 kilometres from National Parks or World Heritage sites of 5 kilometres from any other protected area identified in terms of NEMPAA or from the core area of a biosphere reserve.”*
- GN R 546 – Item 24: *“The expansion of (d) infrastructure covering 10 square metres or more where such construction occurs within 32 metres of a watercourse, measured from the edge of a watercourse, excluding where such construction will occur behind the development setback line (a) in KwaZulu-Natal (ii) outside urban areas, in (gg) areas within 10 kilometres from National Parks or World Heritage sites or 5 kilometres from any other protected area identified in terms if NEMPAA or from the core areas of a biosphere reserve.*

Your Department has been identified as a Key Stakeholder in this Basic Assessment Process and as such a Heritage Impact Assessment will be conducted and sent through to you for your comment and review once complete. In the interim, should you have any queries, or which to provide comment on the proposed at this early stage in the process, please contact the Environmental Assessment Practitioner (EAP), as per the details noted in Table 1.

**TABLE 1: EAP contact details**

Environmental Assessment Practitioner:	Terratest (Pty) Ltd
Contact Person:	Ms Liz Dralle
Postal Address:	PO Box 794, Hilton, 3245
Tel:	(033) 343 6700
Fax:	(033) 343 6788
Email:	drallel@terratest.co.za

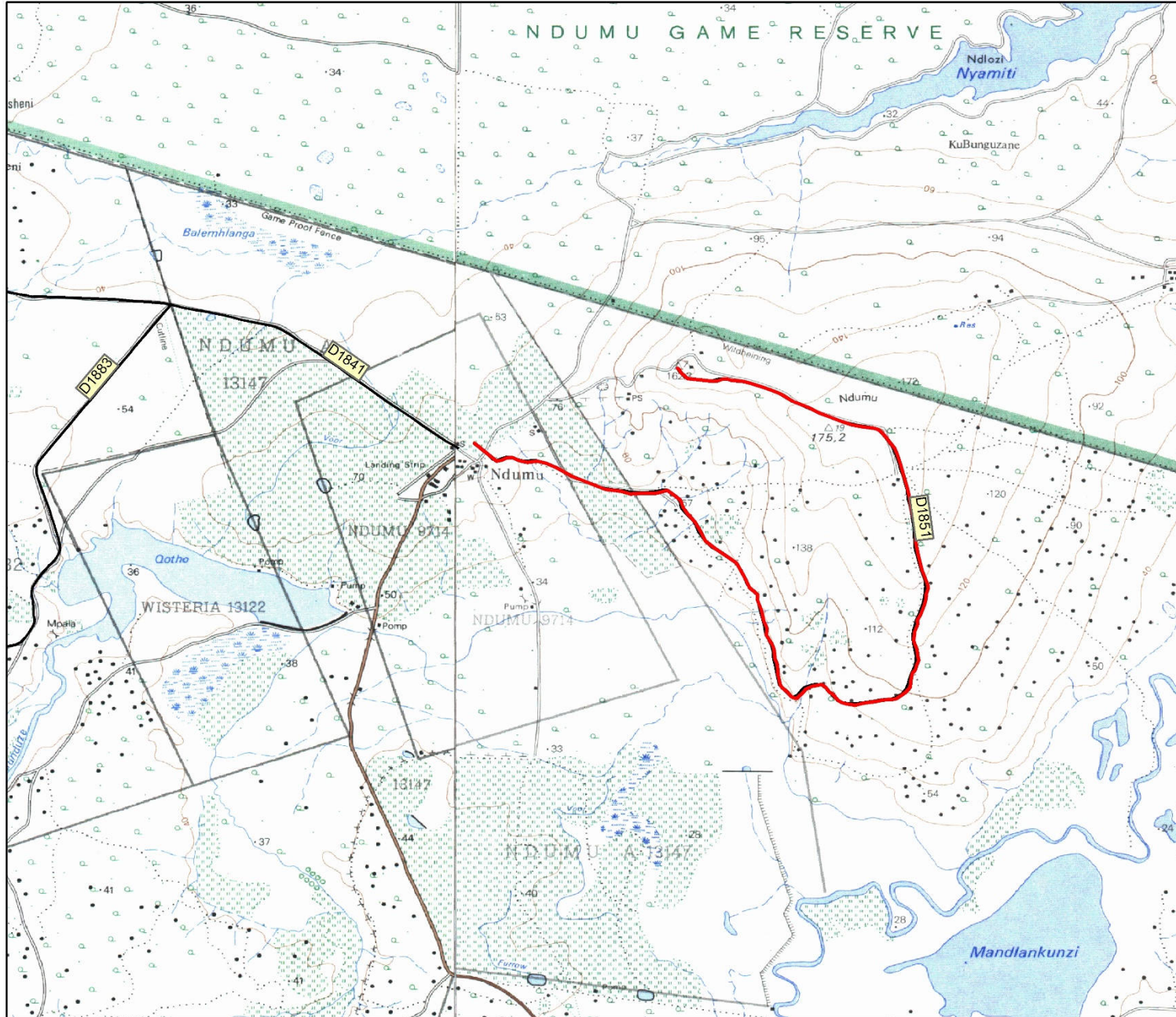
Yours faithfully



**Liz Dralle**

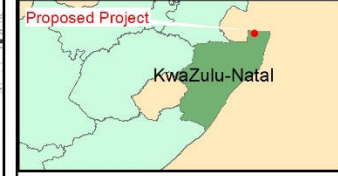
**FOR: Terratest (Pty) Ltd**

**Appendix 1: Locality Map and Proximity Map to Ndumo Game Reserve**



P.O. Box 794 Tel: (033) 343 6789  
 HILTON 3245 Fax: (033) 343 6788

## D1851 Road Upgrade Locality Map

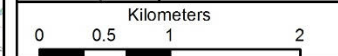


### Legend

- Ndumo Link Road
- District Roads



Scale:  
 1:50 000





**terratest**  
Geotechnical, Environmental  
& Earth Science Consultants

P.O. Box 794  
HILTON 3245

Tel: (033) 343 6789  
Fax: (033) 343 6788

**D1851  
Road Upgrade**  
Protected Areas

Proposed Project

KwaZulu-Natal

**Legend**

- Ndumo Link Road
- EKZNW Protected Area
- 5Km Protected Area Buffer

Scale:  
1:80 000

Kilometers  
0 0.5 1 2 3