

Addendum 1
Heritage Resources Identification and
Assessment.

Contract

Olifants River Water Resources Development
Project Phase 2 (ORWRDP II).

Research

Borrow pits BP 13 & 22

Revised 2011/05/11

§

Consulting

Name and geographical location of the site(s) and/ or project:

ORWRDP II Borrow Pits 13 and 22 in the Olifants River Valley.

Property or farm name:

BP 13 – Farm Kromdraai 129 Portion 2

BP 22 – Farm Pruisen 48 Portion 2

Services

Province:

Limpopo

Authors: WC Nienaber

- Business Enterprises at University of Pretoria (Pty) Ltd
- Forensic Anthropology Research Centre (FARC)
- University of Pretoria

Developer and consultant name (who commissioned the report);

Mr D Esterhuisen, Aurecon SA (Pty) Ltd and Ndodana Consulting Engineers Joint Venture

8 February 2011 (Original version)

Business Enterprises at University of Pretoria (Pty) Ltd

PO Box 14679
Hatfield 0028

T: +27 (12) 420 4245
F: +27 (12) 362 5270

University of Pretoria Main Campus
Prospect Street, Hatfield
Graduate Center, Entrance 1.82



EXECUTIVE SUMMARY

- The study is an extension of the areas surveyed as part of The ORWRDP Phase II study (Refer: Nienaber, W.C., Hutten, M and Meyer, A. 2011. Heritage Resources Identification and Assessment. Olifants River Water resources Development Project Phase 2 (ORWRDP II). Unpublished report by Business Enterprises at University of Pretoria (Pty) Ltd to SAHRA and Aurecon SA (Pty) Ltd and Ndodana Consulting Engineers Joint Venture.)
- The study covered two additional areas, namely Borrow Pits 13 and 22 which was not included in the initial study.
- No surface indications of the presence of protected heritage resources were found.
- It is recommended that the proposed construction activities be allowed.
- No mitigation actions are required.

1. INTRODUCTION

Background information on the project can be found as part of: Nienaber, W.C., Hutten, M and Meyer, A. 2011. Heritage Resources Identification and Assessment. Olifants River Water resources Development Project Phase 2 (ORWRDP II). Unpublished report by Business Enterprises at University of Pretoria (Pty) Ltd to SAHRA and Aurecon SA (Pty) Ltd and Nnodana Consulting Engineers Joint Venture.

This document include a full background to the archaeological history of the area, a literature review and archival research, as well as reference to databases and other impact assessments of the general area.

2. DESCRIPTION OF THE PROPERTY OR AFFECTED ENVIRONMENT – ORWRDP BP 13

The indicated site consisted of a rectangular area approximately 5.3ha large. It is situated north-east of the D2858 road next to a game fence. The largest part of the area next to the road and along the fence was previously disturbed by earth moving equipment. The rest of the area is covered in dense natural vegetation (Fig 1).

Figure 1. View of the area ORWRDP BP13.



2.1.Details of the area surveyed – ORWRDP II Borrow Pit 13

2.1.1. Location Data

GPS coordinates:	S24 23 33.5 E29 08 36.0
Property or farm name:	Farm Kromdraai 129 Portion 2
Magisterial district:	Waterberg District Municipality
Province:	Limpopo

2.1.2. Location Map(s)/orthophotos

Refer Fig. 2.

2.2.Area surveyed – ORWRDP II Borrow Pit 13

The area surveyed can be described by the shape produced by linking the following points:

S24 23 32.0 E29 08 46.2

S24 23 36.2 E29 08 41.3

S24 23 30.2 E29 08 33.3

S24 23 26.5 E29 08 38.8

This area is also the footprint of the development, seeing that the whole of the area will be affected (Refer Fig. 2).

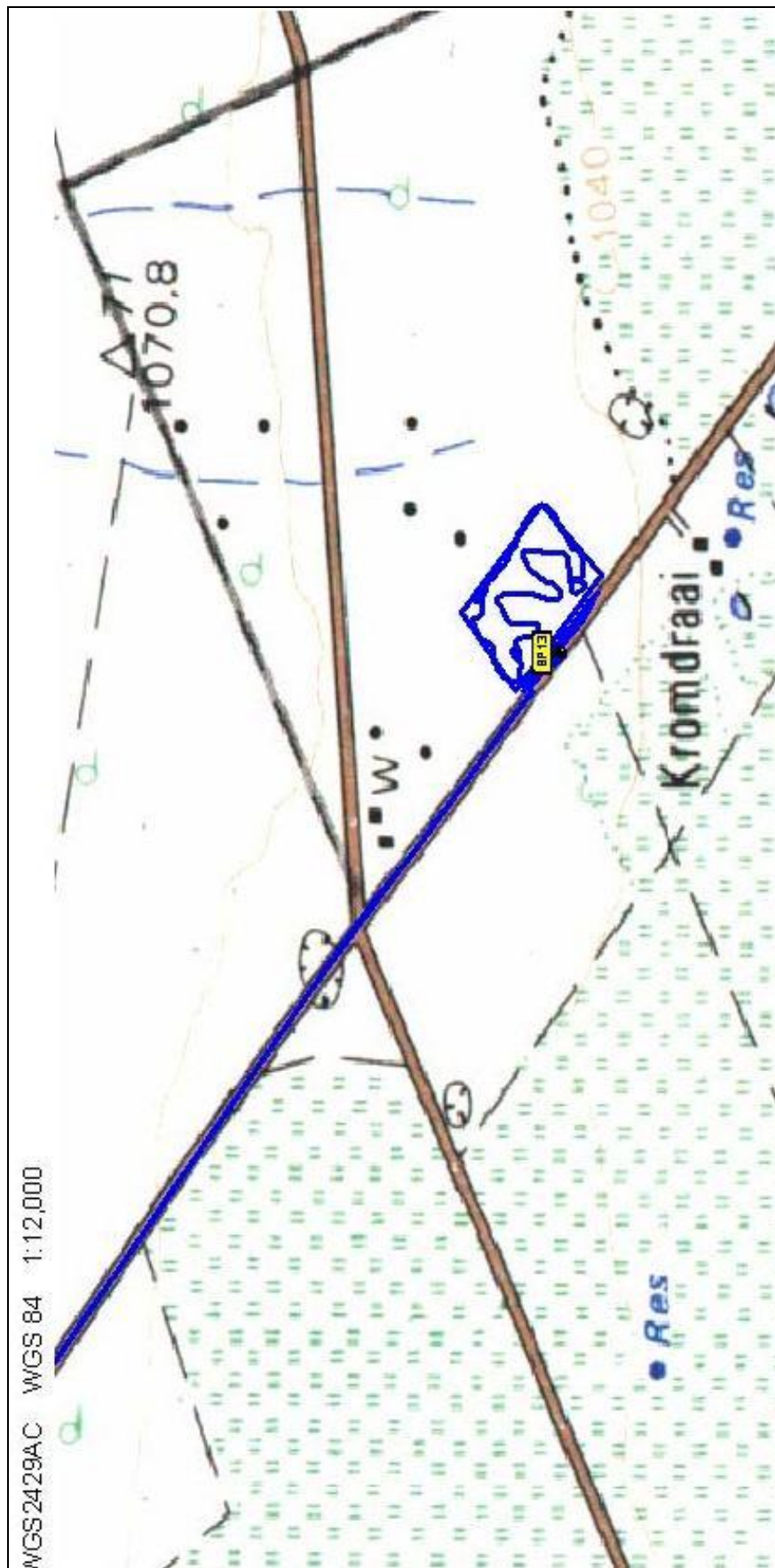
3. SURVEY METHODOLOGY

The area was surveyed on foot over a period of one day by one person. No sampling was undertaken. The survey was not restricted apart from dense vegetation resulting from heavy rains over some months in the area. Survey transects are indicated in fig. 2. Refer: Nienaber, W.C., Hutten, M and Meyer, A. 2011. Heritage Resources Identification and Assessment. Olifants River Water resources Development Project Phase 2 (ORWRDP II). Unpublished report by Business Enterprises at University of Pretoria (Pty) Ltd to SAHRA and Aurecon SA (Pty) Ltd and Ndodana Consulting Engineers Joint Venture for a full description of equipment used to acquire data.

4. DESCRIPTION OF SITES

No sites or any features indicated as protected in the National Heritage Resources Act (Act 25 of 1999) were found.

Figure 2. Locality Map of ORWRDP BP 13.



5. RECOMMENDATIONS

It is recommended that, due to the absence of any heritage resources, construction be allowed to continue.

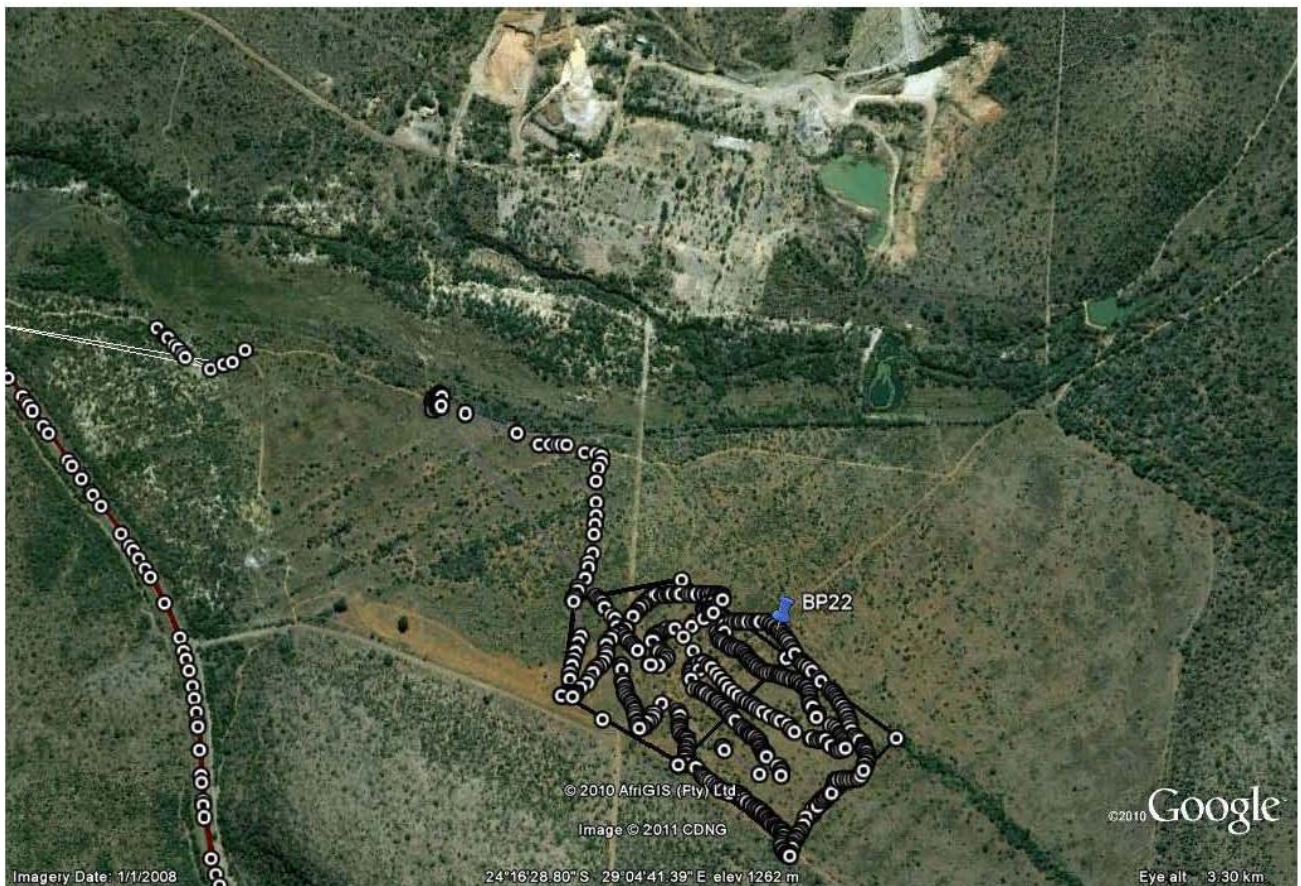
5.1. Action/s required at the site

No further mitigation action is required at the site.

6. DESCRIPTION OF THE PROPERTY OR AFFECTED ENVIRONMENT – ORWRDP BP 22

The indicated sites consist of a polygonal area approximately 14.8 ha large. It is situated north-east of the R518 road at the foot of the Maribashoek Mountain. The total area is extensively disturbed by agricultural and quarry activities (Fig 3).

Figure 3. Satellite view of the area ORWRDP BP22 showing the extent of the surface disturbance.



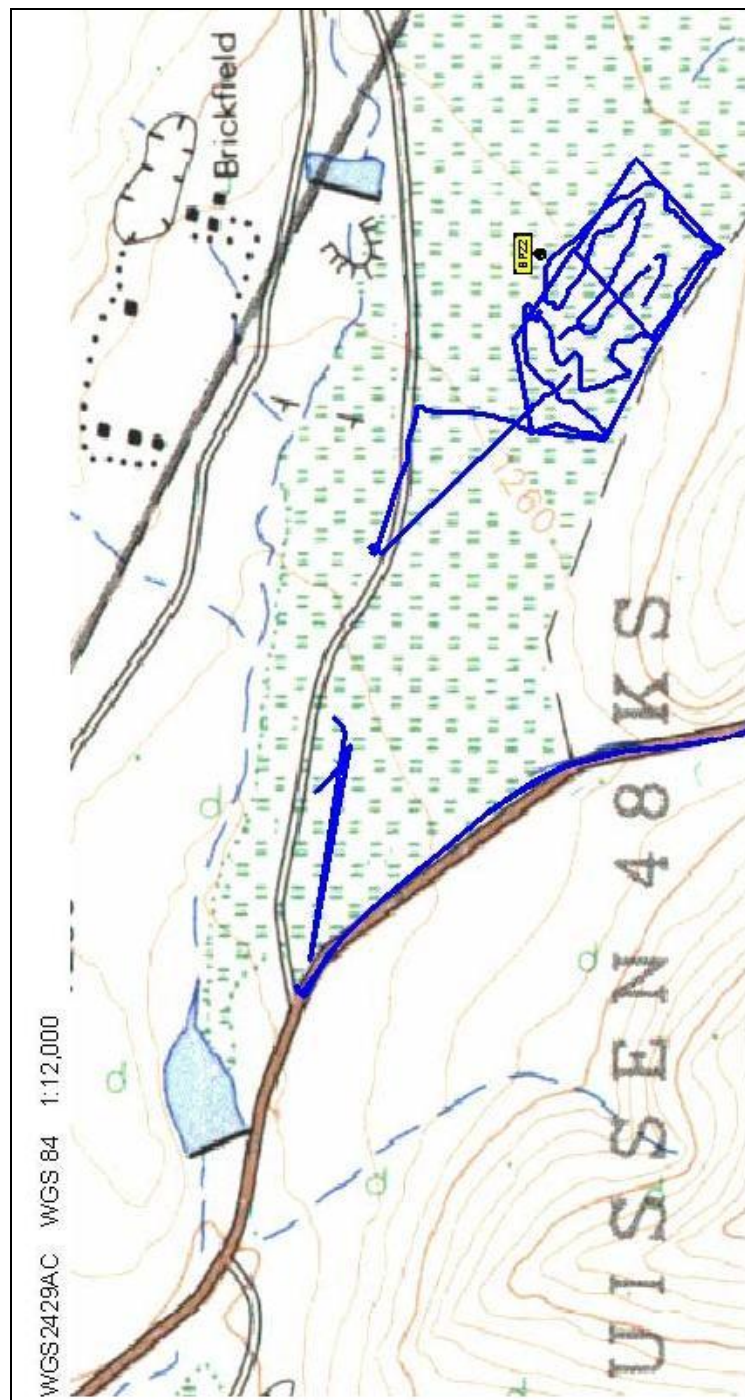
6.1.Details of the area surveyed – ORWRDP II Borrow Pit 22

6.1.1. Location Data

GPS coordinates: S24 16 38.3 E29 04 49.7
Property or farm name: Farm Pruisen 48 Portion 2
Magisterial district: Capricorn District Municipality
Province: Limpopo

6.1.2. Location Map(s)/orthophotos

Figure 4. Locality Map ORWRDP II BP 22.



6.2. Area surveyed – ORWRDP II Borrow Pit 22

The area surveyed can be described by the shape produced by linking the following points:

S24 16 43.0 E29 04 35.6
S24 16 44.4 E29 04 38.3
S24 16 47.0 E29 04 43.0
S24 16 40.8 E29 04 50.0
S24 16 36.3 E29 04 43.3
S24 16 37.6 E29 04 36.4
S24 16 43.0 E29 04 35.6
S24 16 43.0 E29 04 35.6
S24 16 47.0 E29 04 43.0
S24 16 51.5 E29 04 50.1
S24 16 45.4 E29 04 56.9
S24 16 40.8 E29 04 49.9
S24 16 47.0 E29 04 43.0
S24 16 47.0 E29 04 43.0

This area is also the footprint of the development, seeing that the whole of the area will be affected (Refer Fig. 4).

7. SURVEY METHODOLOGY

The area was surveyed on foot over a period of one day by one person. No sampling was undertaken. The survey was not restricted apart from dense vegetation resulting from heavy rains over some months in the area. Survey transect logs are indicated in fig. 4. Refer: Nienaber, W.C., Hutten, M and Meyer, A. 2011. Heritage Resources Identification and Assessment. Olifants River Water resources Development Project Phase 2 (ORWRDP II). Unpublished report by Business Enterprises at University of Pretoria (Pty) Ltd to SAHRA and Aurecon SA (Pty) Ltd and Ndodana Consulting Engineers Joint Venture for a full description of equipment used to acquire data.

8. DESCRIPTION OF SITES

No sites or any features indicated as protected in the National Heritage Resources Act (Act 25 of 1999) were found.

9. RECOMMENDATIONS

It is recommended that, due to the absence of any heritage resources, construction be allowed to continue.

9.1.Action/s required at the site

No further mitigation action is required at the site.

10.CONCLUSIONS

No heritage resources indicated as protected was found.

11.BIBLIOGRAPHY

Refer: Nienaber, W.C., Hutten, M and Meyer, A. 2011. Heritage Resources Identification and Assessment. Olifants River Water resources Development Project Phase 2 (ORWRDP II). Unpublished report by Business Enterprises at University of Pretoria (Pty) Ltd to SAHRA and Aurecon SA (Pty) Ltd and Ndodana Consulting Engineers Joint Venture for full biography.