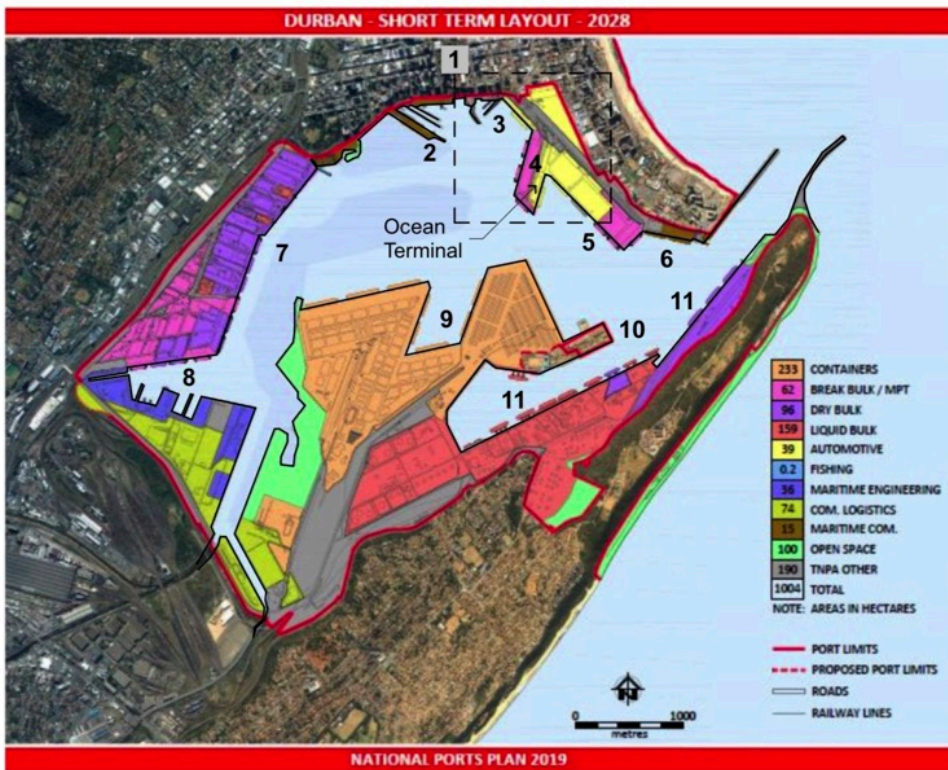


 Hatched area indicates extent of harbour waters in 2020



LEGEND

- 1 Durban CBD
- 2 Yacht Mole
- 3 Tug Harbour + Maritime Museum
- 4 T Jetty + Ocean Terminal Building (Port admin offices)
- 5 Point Berths N Shed (Previously used as Cruise Terminal)
- 6 A Berth for Proposed Cruise Terminal
- 7 Maydon Wharf Berths
- 8 Dry Dock
- 9 xx
- 10 Salisbury Island Naval Base
- 11 Bluff fuel and coal terminal

Location and site access_

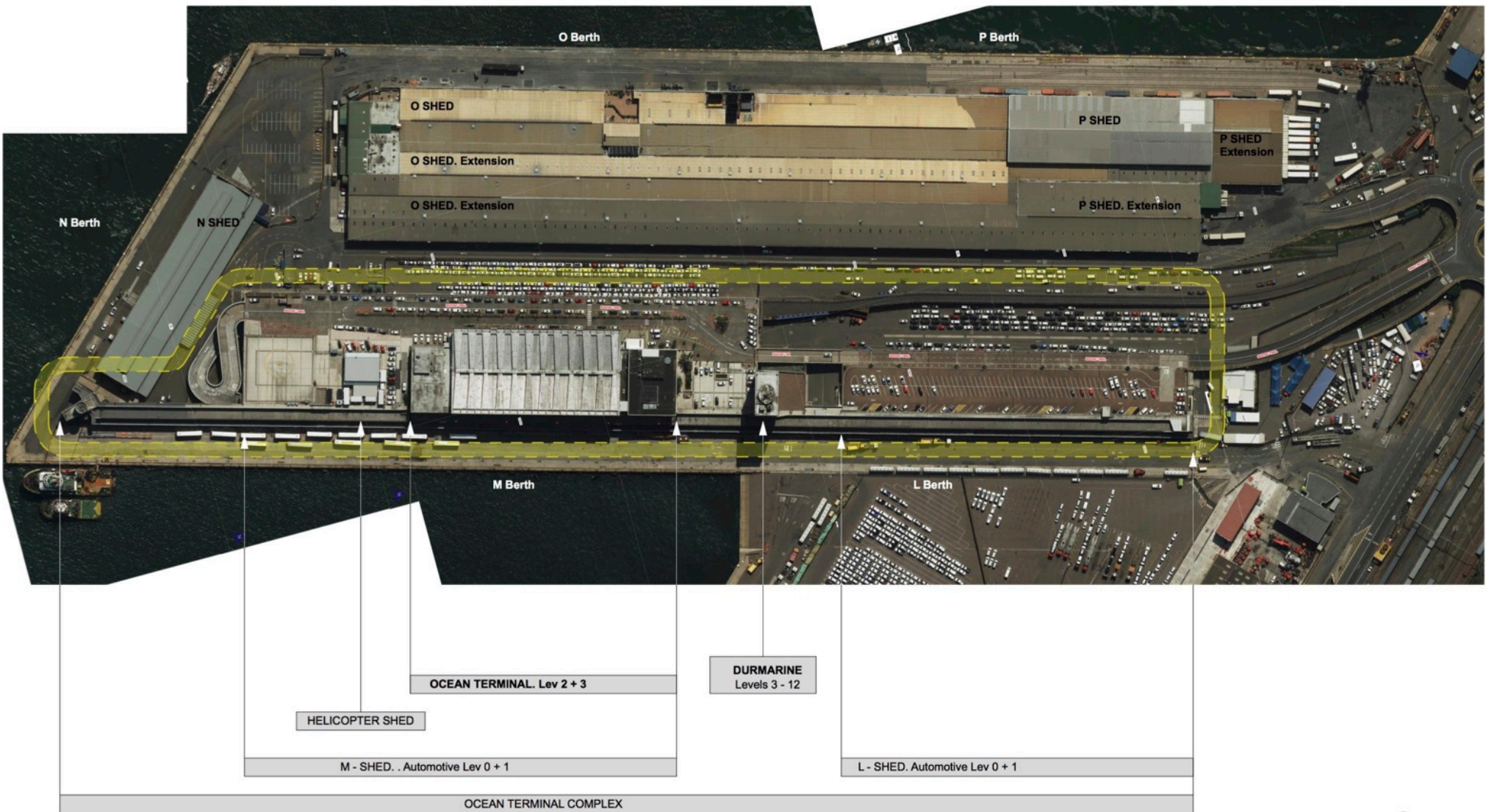


- 1 Magaret Mncadi Road - (Esplanade) + intersection to access Port Gate 3 SARS Customs Building
- 2 Tug Harbour, BAT Centre + Maritime Museum
- 3 Port Access Control Gatehouse and overpass
- 4 Automotive stacking including multi-storey parking garage
- 5 T Jetty (1939 - 1950) + Ocean Terminal Building (1958-1962) (1993 - Present. Port admin offices)
- 6 Point wharf extension (2002-2004). Automotive. stacking
- 7 Mahatma Ghandi Road (Point)
- 8 Length of Ocean Terminal Complex, 600m

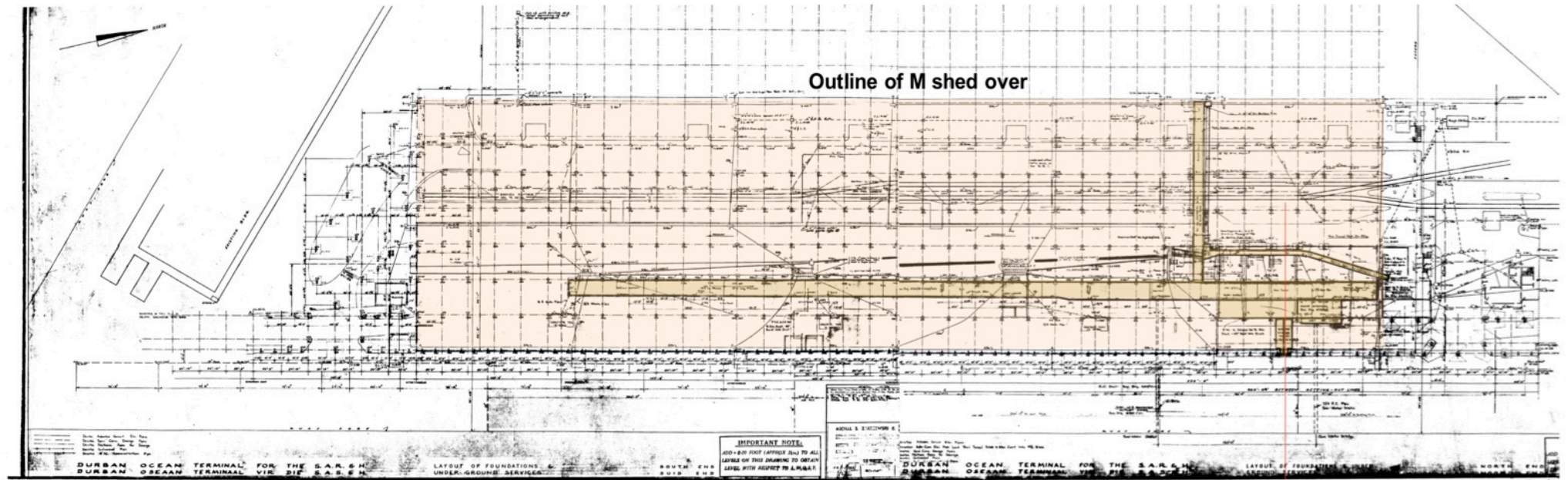




Port development aerial photos. H Tepler



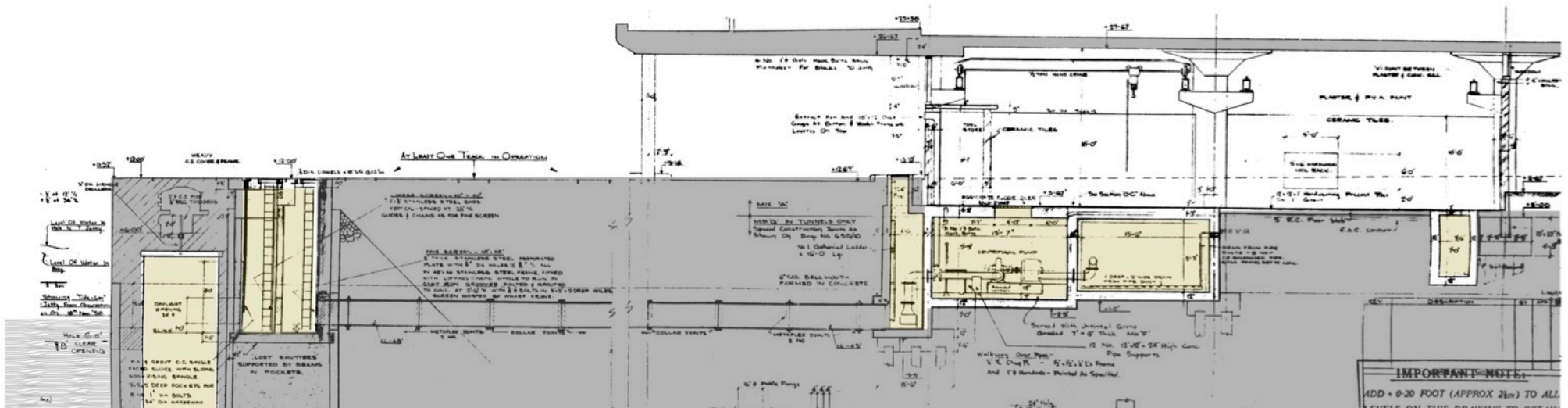
2021 - T Jetty Aerial and Exterior Photo Positions



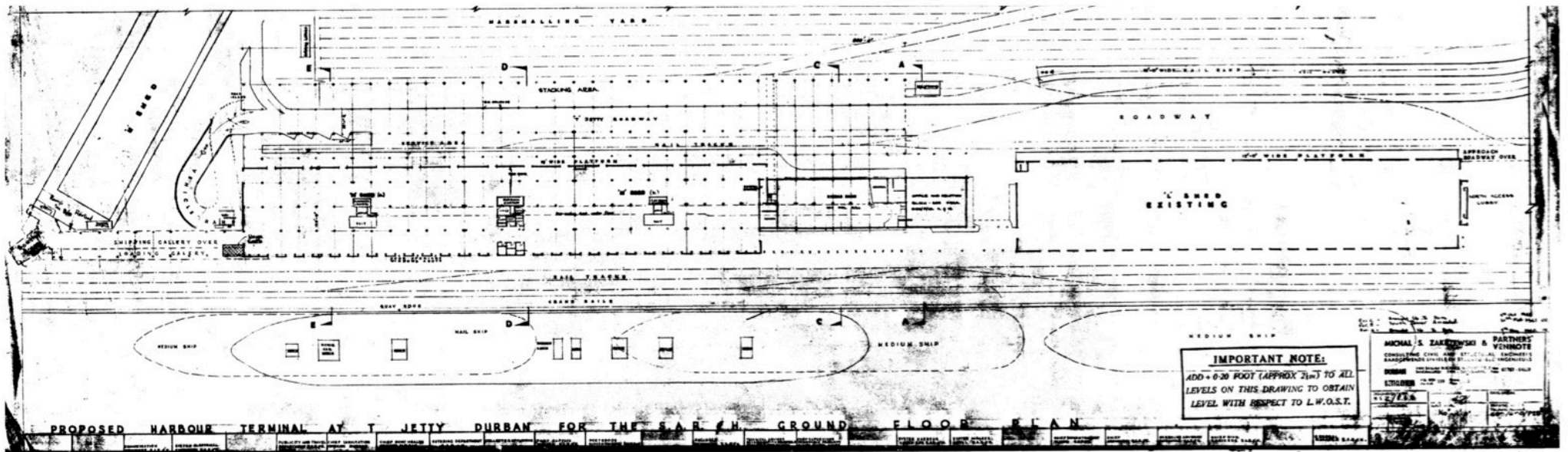
M-Shed. Below wharf level - Pre-cooling heat transfer system.

M-Shed. Section A

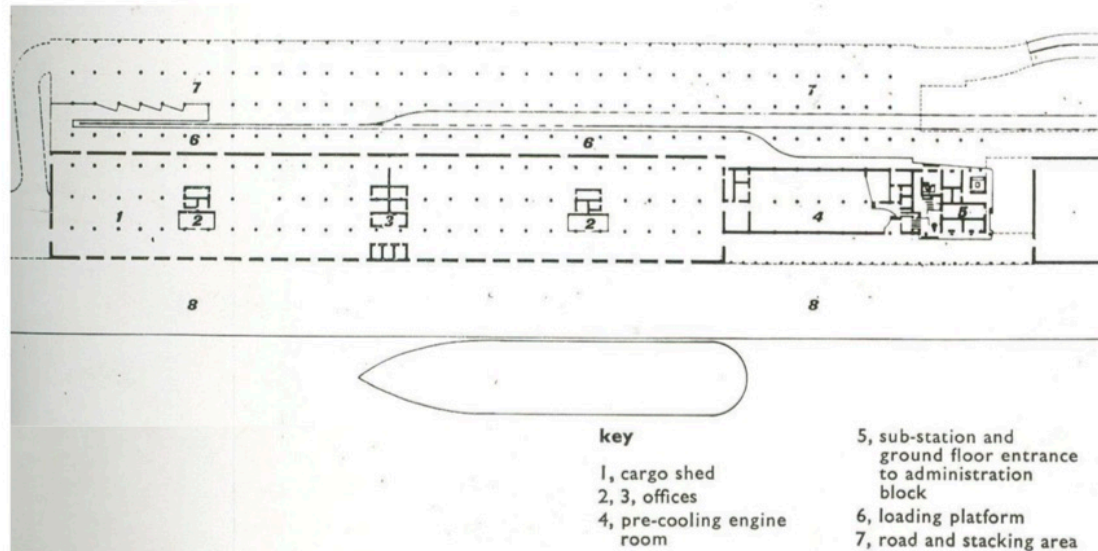
◀ A



Pre-cooling tunnels Lev -1

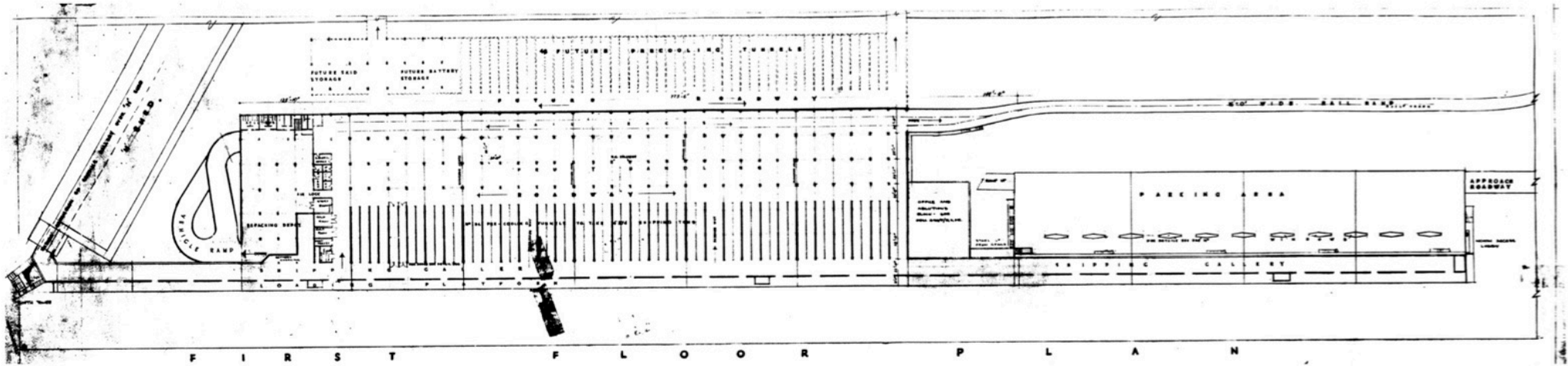


Ground Floor Level. Original Drawing

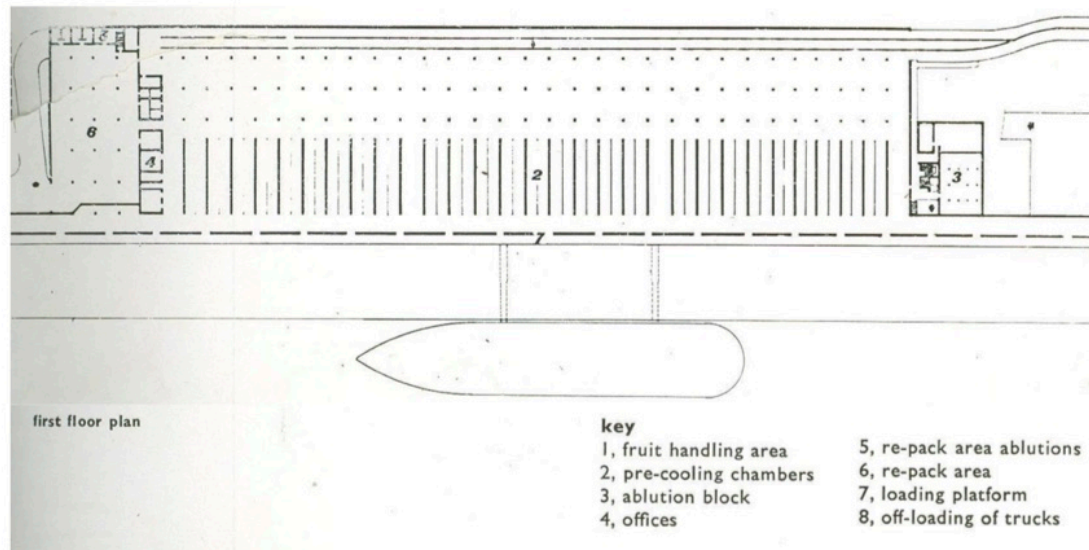


Ground Floor Level. Architectural Review published layout

Original Ground Floor Plan + Architectural Review Published Layout



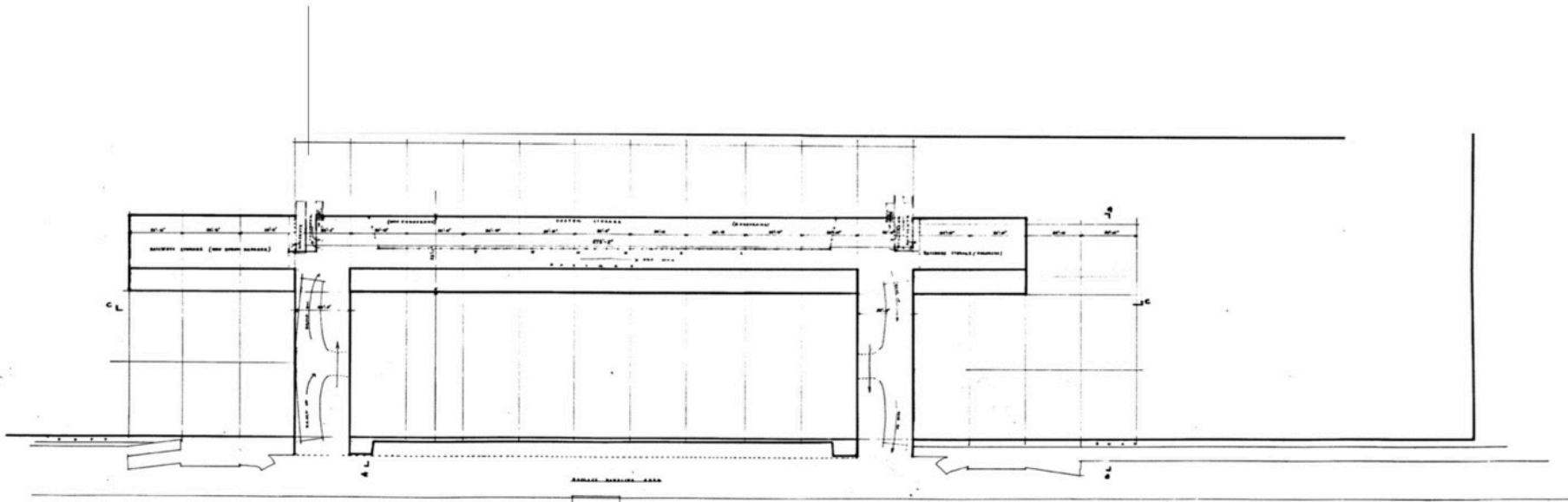
First Floor Level. Original Drawings. Fruit pre-cooling chambers + loading deck.

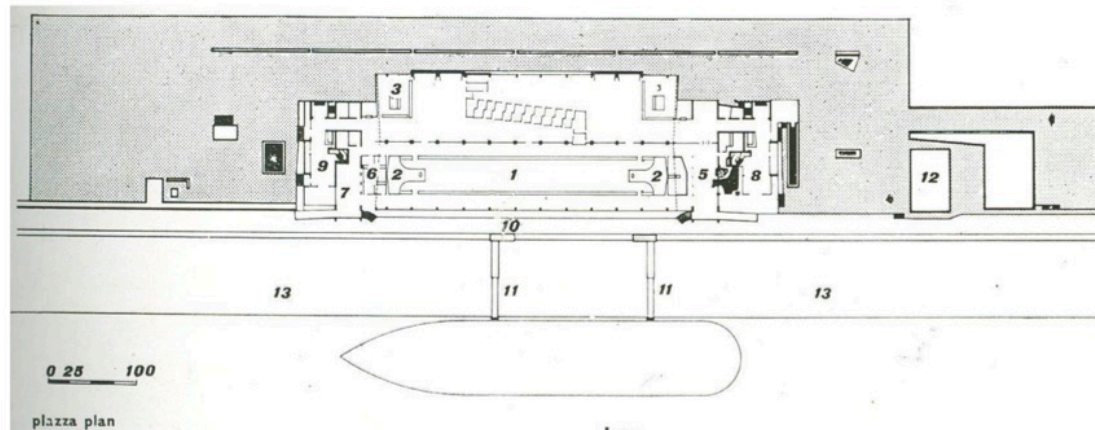
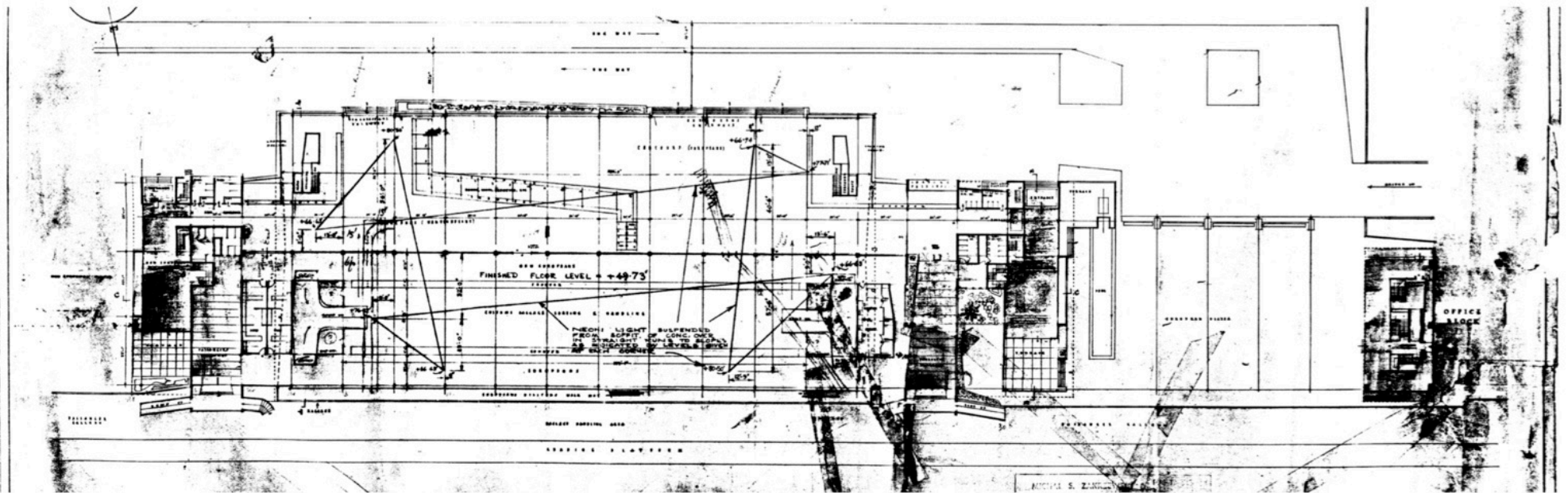


First Floor Level. Architectural Review published layout

Original First Floor Plan + Architectural Review Published Layout





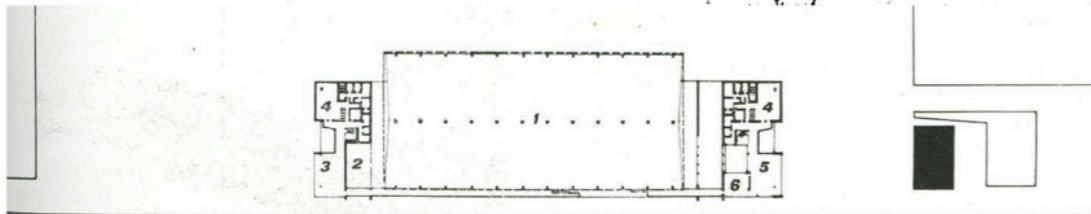
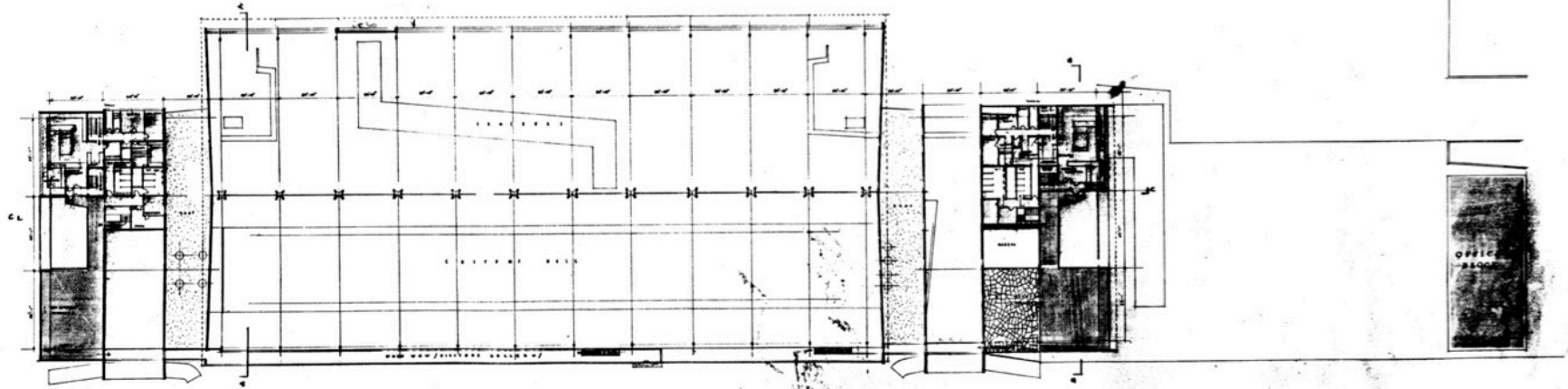


key

- 1, customs area
- 2, baggage ramp
- 3, baggage release
- 4, shopping kiosks
- 5, entrance hall for passengers
- 6, port health and immigration offices
- 7, entrance hall for passengers
- 8, European restaurant—lower floor
- 9, non-European restaurant—lower floor
- 10, baggage and passenger gallery
- 11, telescopic gangways
- 12, administration block
- 13, quay below

Second floor. Arrivals Hall Entry. Unbuilt Design and Architectural Review Published Layout

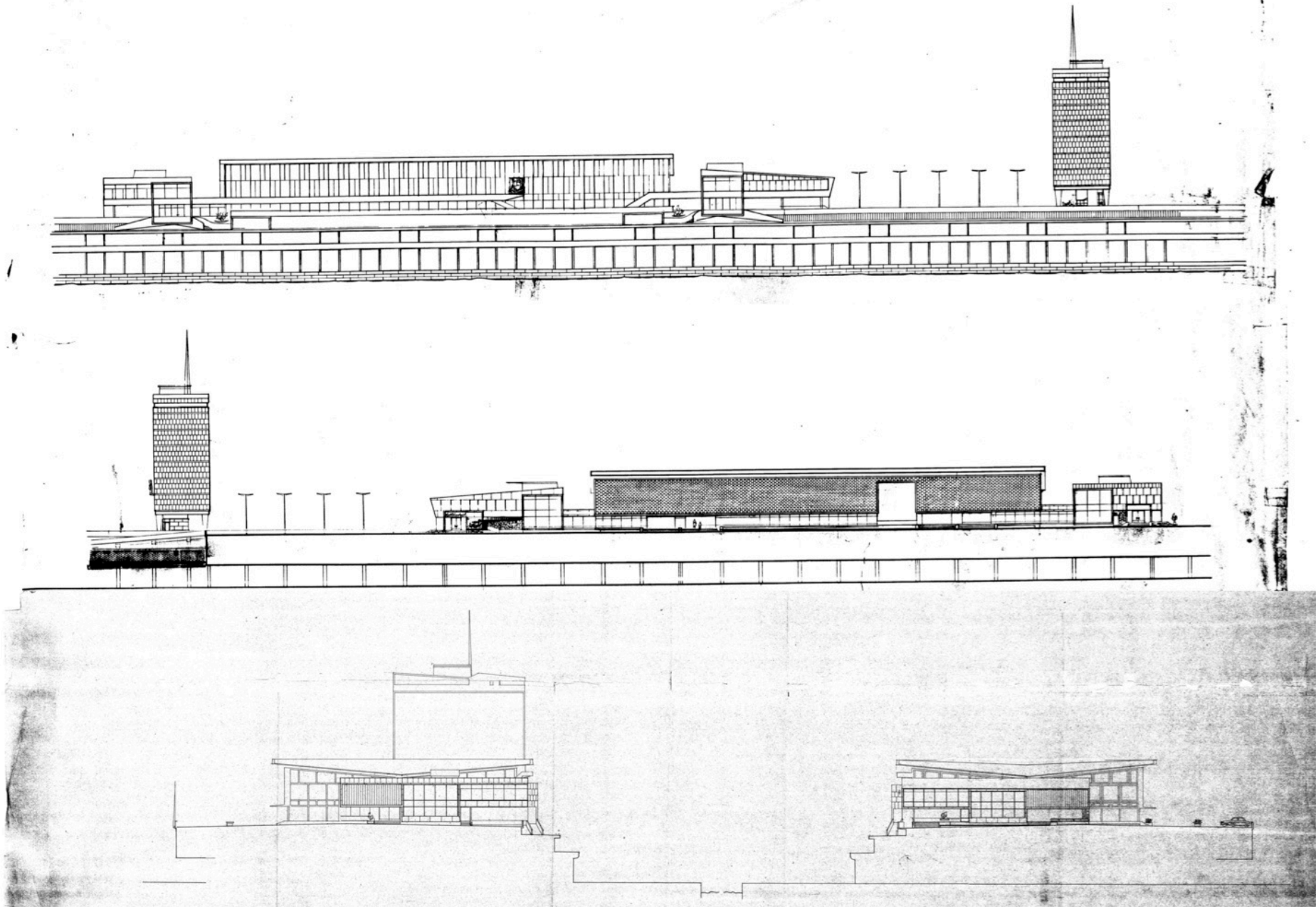




third floor plan

key

- 1, upper volume of terminal building
- 2, upper volume of entrance hall
- 3, non-European dining room
- 4, kitchens
- 5, European dining room
- 6, bar

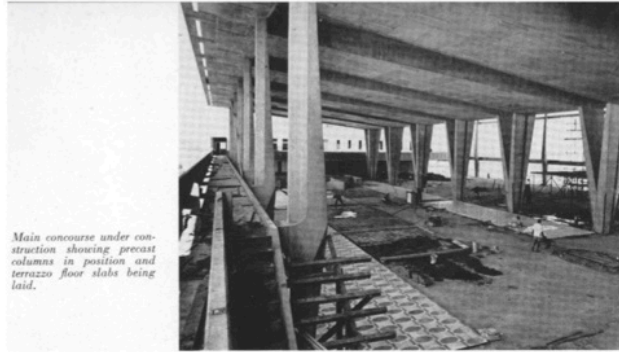




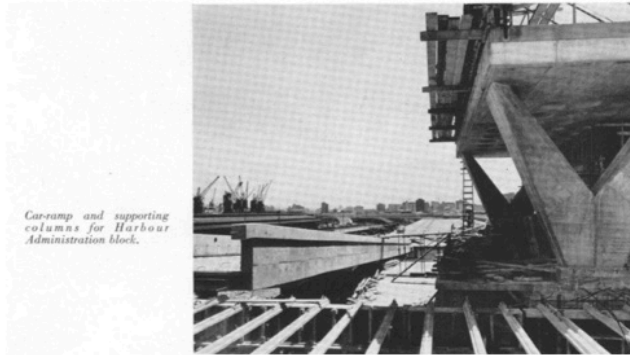
Completed



Views from across the harbour



Main concourse under construction showing precast columns in position and terrazzo floor slabs being laid.



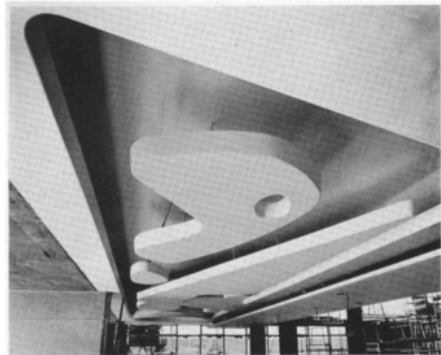
Car-ramp and supporting columns for Harbour Administration block.



Central columns of the concourse are precast and give a sculpture-like effect

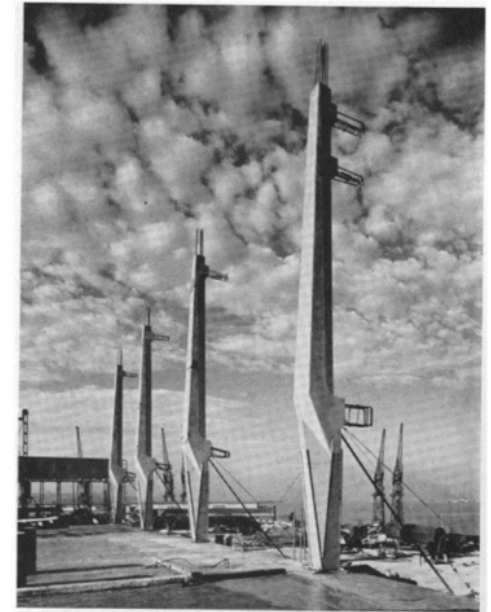
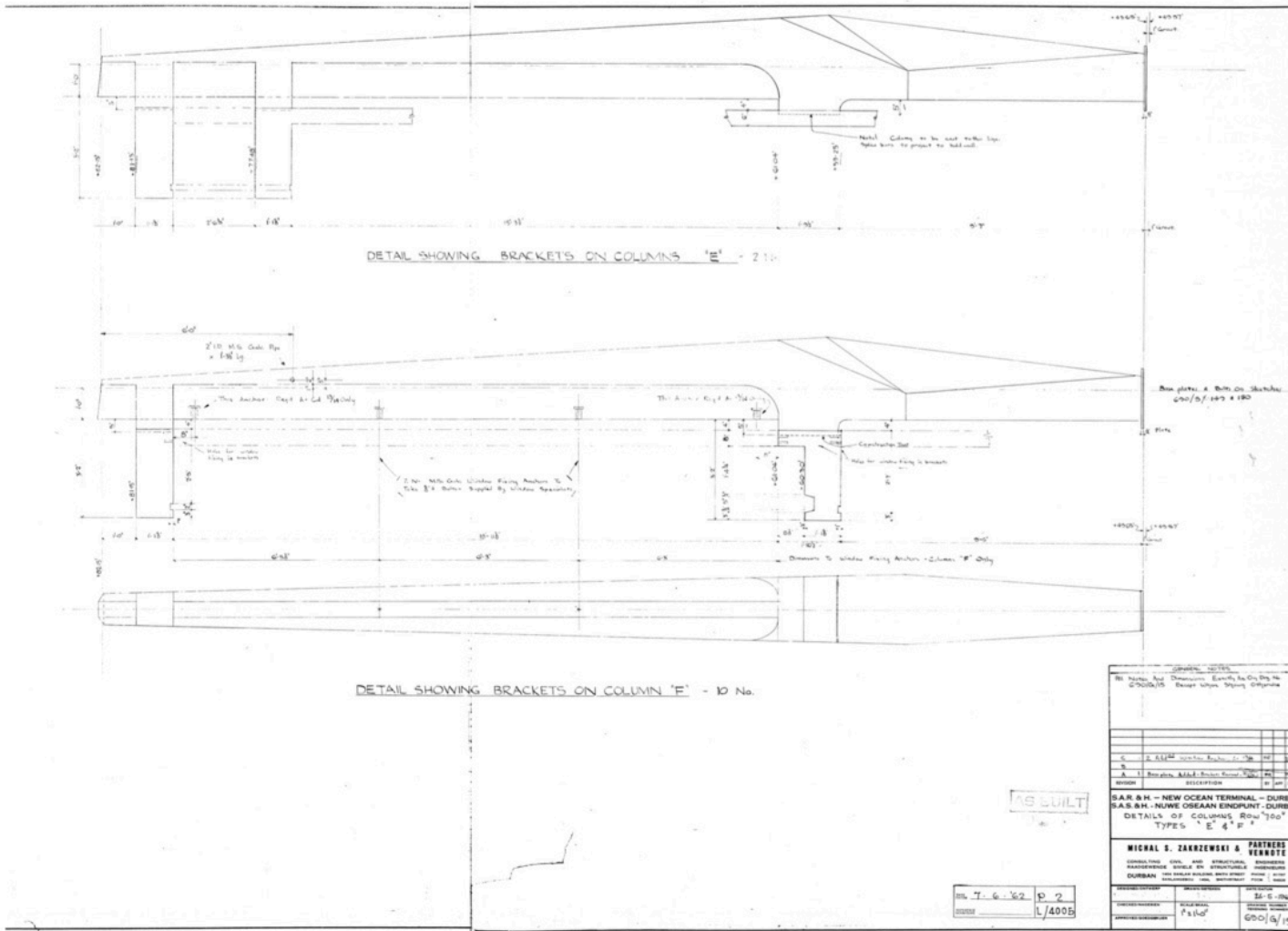


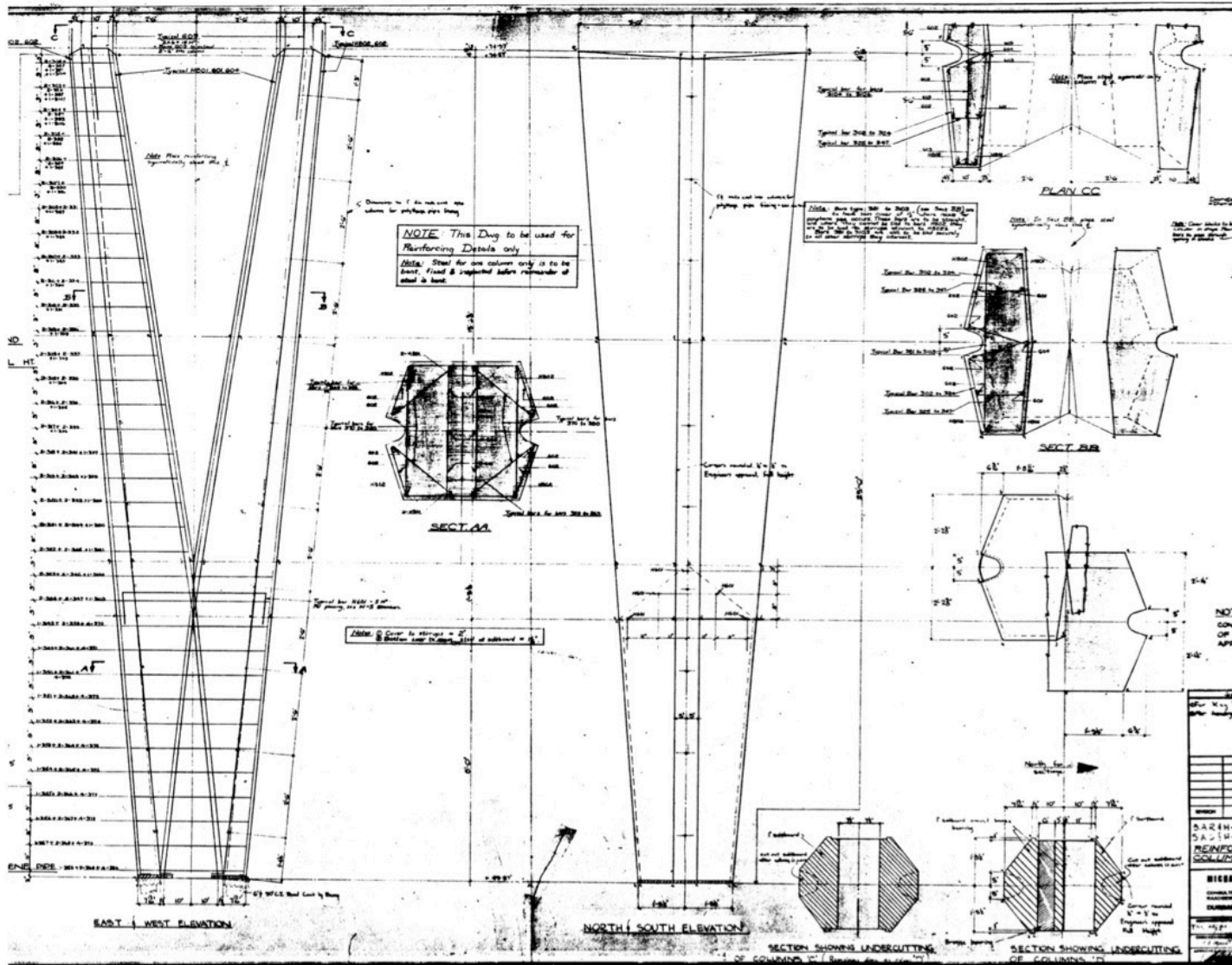
Another unusual ceiling is used in the non-European restaurant.

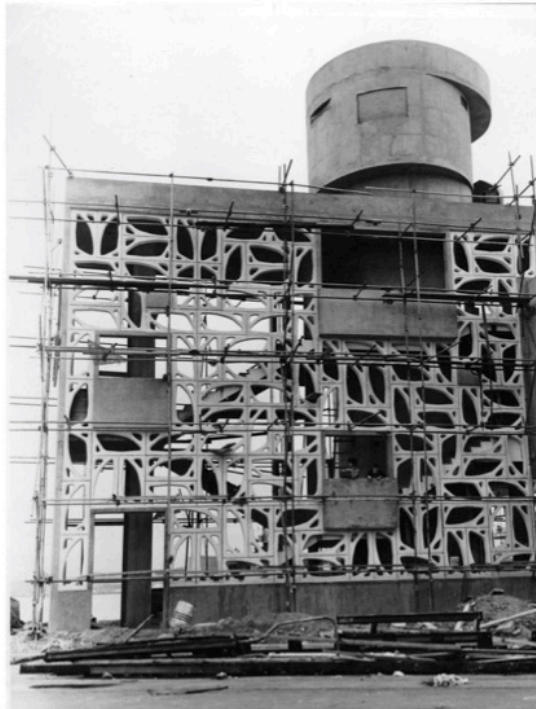


Striking ceiling treatment of the European passenger entrance.

4 ARCHITECT AND BUILDER







Images of building after construction - 1962



Image 19.1 Interior. Arrivals Hall



Image 19.3 Interior. Arrivals Hall

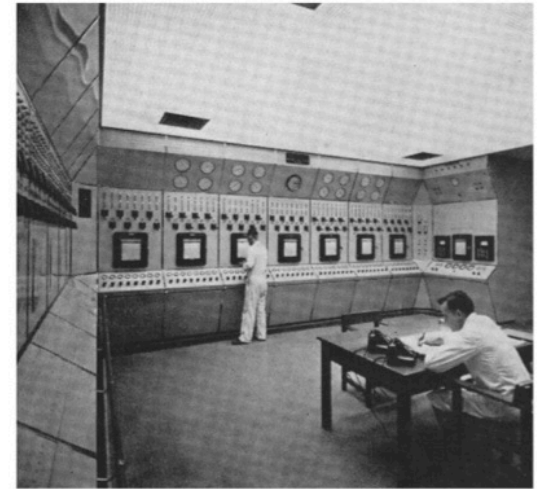


Image 19.5 M-shed. Pre-cooling mechanical control room



Image 19.2 Interior. Baggage collection

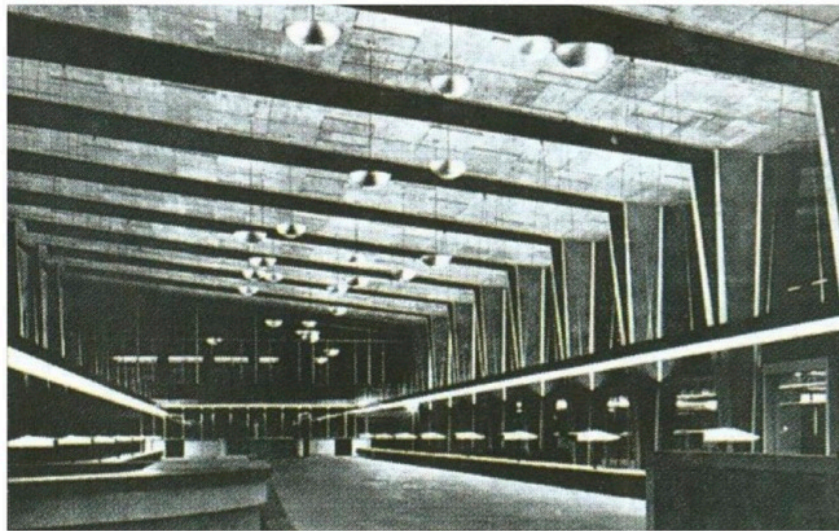


Image 19.4 Interior. Customs Counters



Image 20.1 Hans Hallen and Janusz Warunkiewicz



Image 20.3 Janusz Warunkiewicz



Image 20.4 Janusz Warunkiewicz

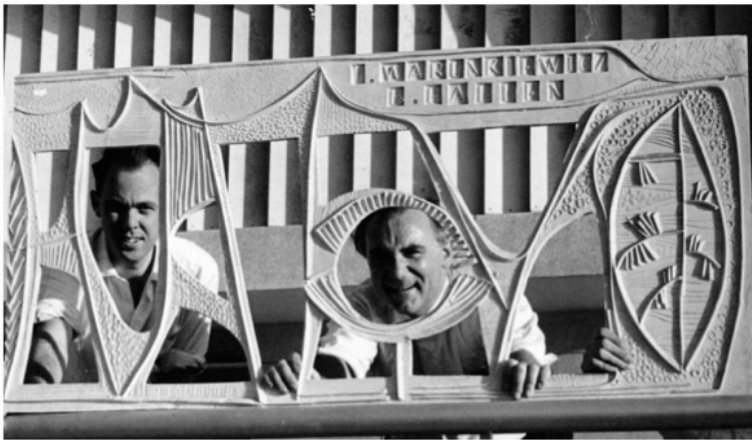


Image 20.2 Hans Hallen and Janusz Warunkiewicz

Images from Facts about Durban, website



Durmarine, The cheese grater sunshading with the Galleon sculpture 1962



1990

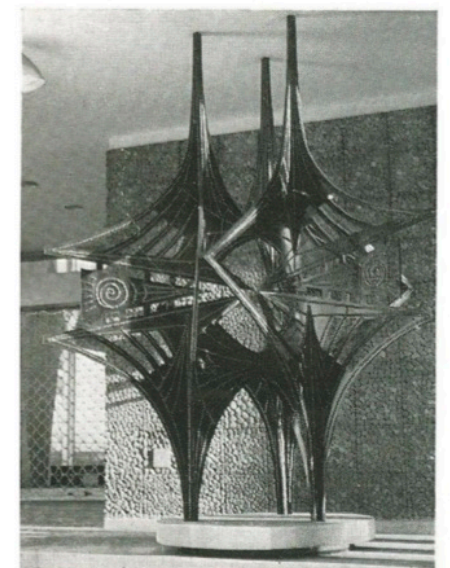


Durmarine, The Galleon sculpture missing

2020



Ocean Terminal, Sculpture and mosaics by John Hooper

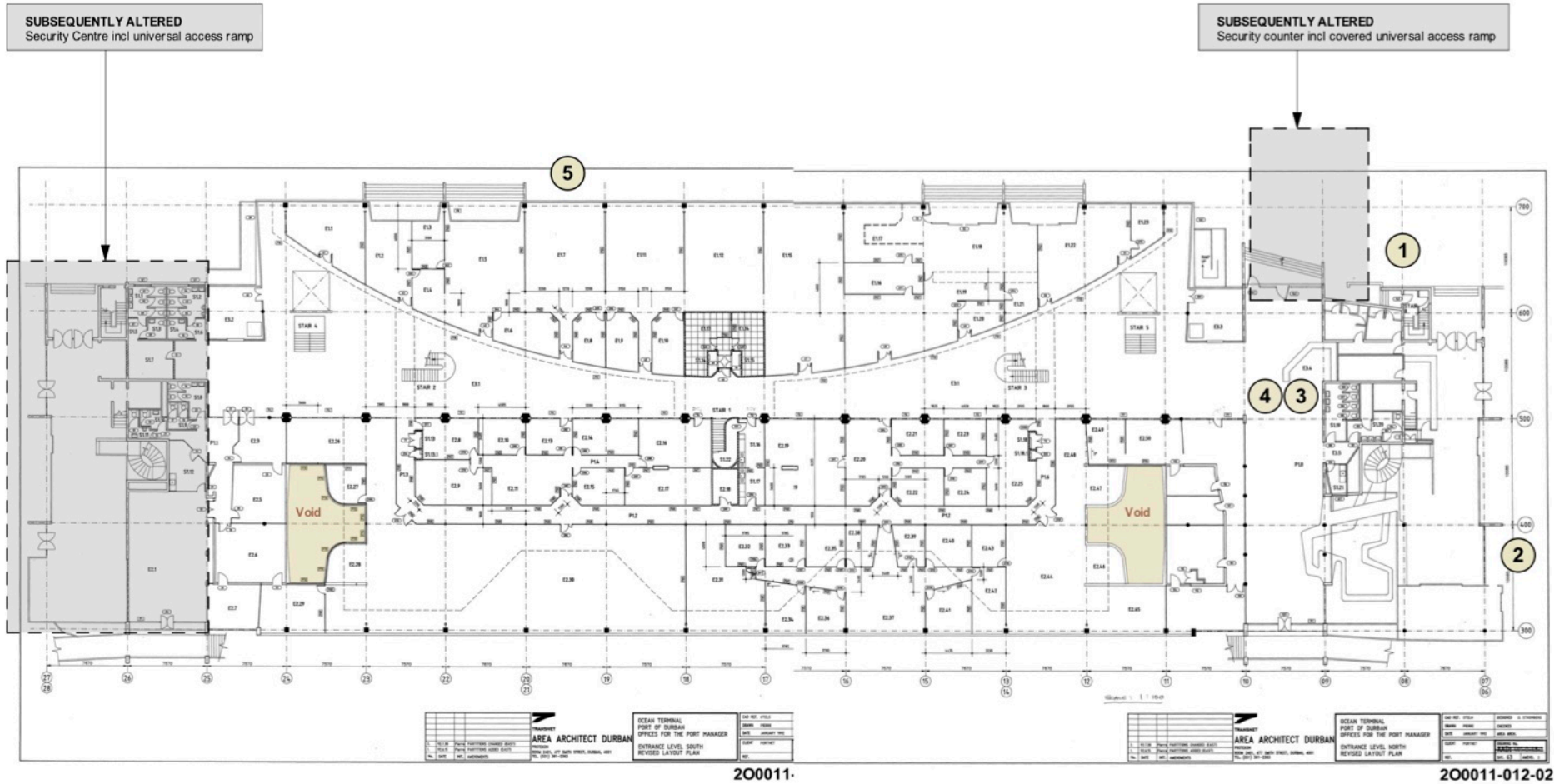


Ocean Terminal, Sculpture in lobby (1962). Missing (2020)

Artworks as Originally installed



Integration of artworks



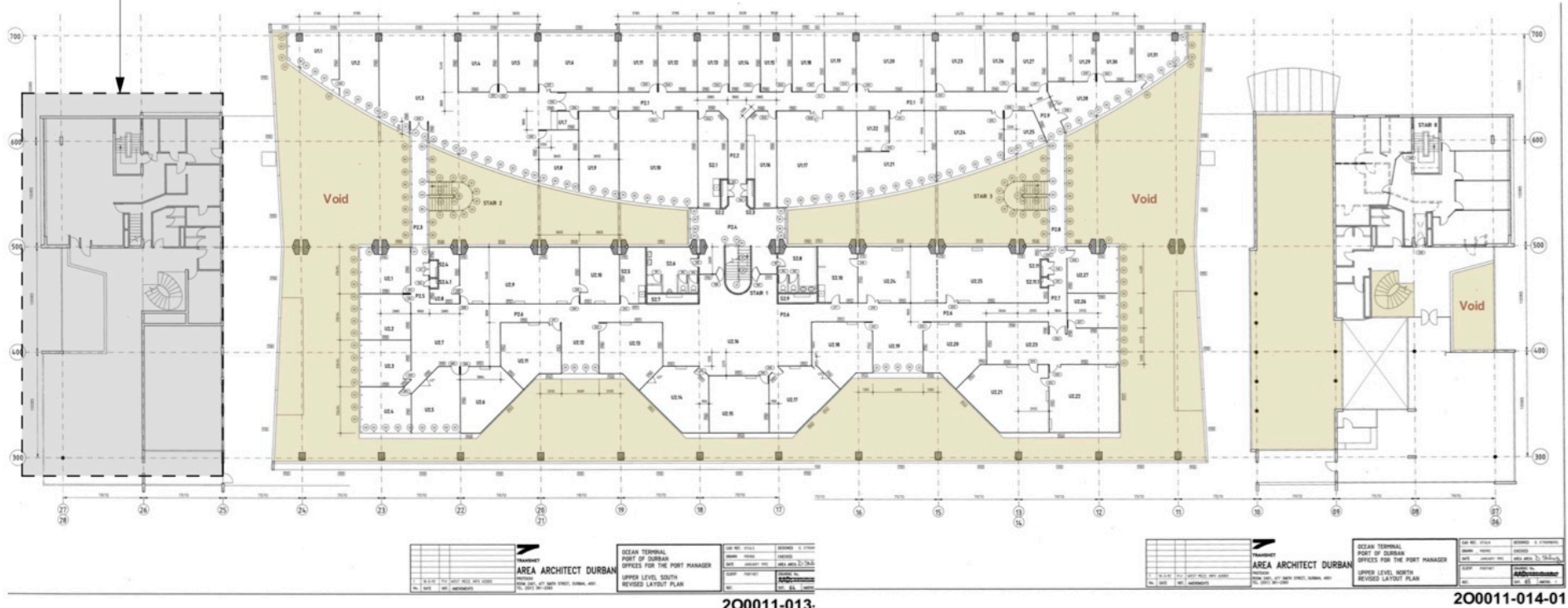
LEGEND - ARTWORKS

- 1 Posideon sculpture
- 2 Decorative fish
- 3 Mosaic Entrance foyer North wall
- 4 Mosaic Entrance foyer North wall
- 5 Mosaic with raised Metal sculpture.

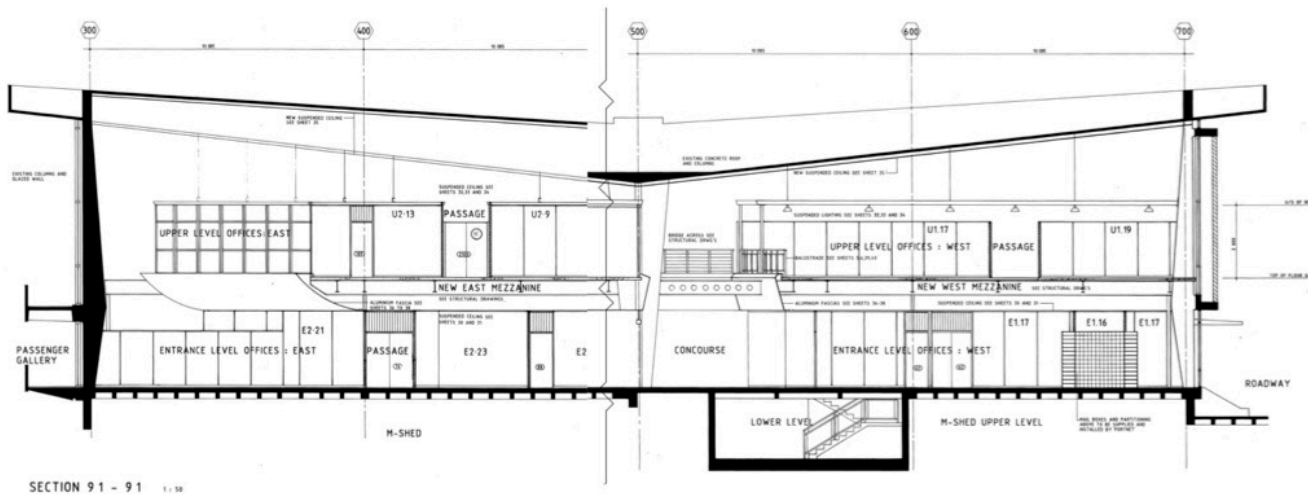
1993 - Conversion to offices Lev 2. Arrival Hall

1993 - Conversion to offices Lev 2. Arrival Hall

SUBSEQUENTLY ALTERED
Security Centre (2008)

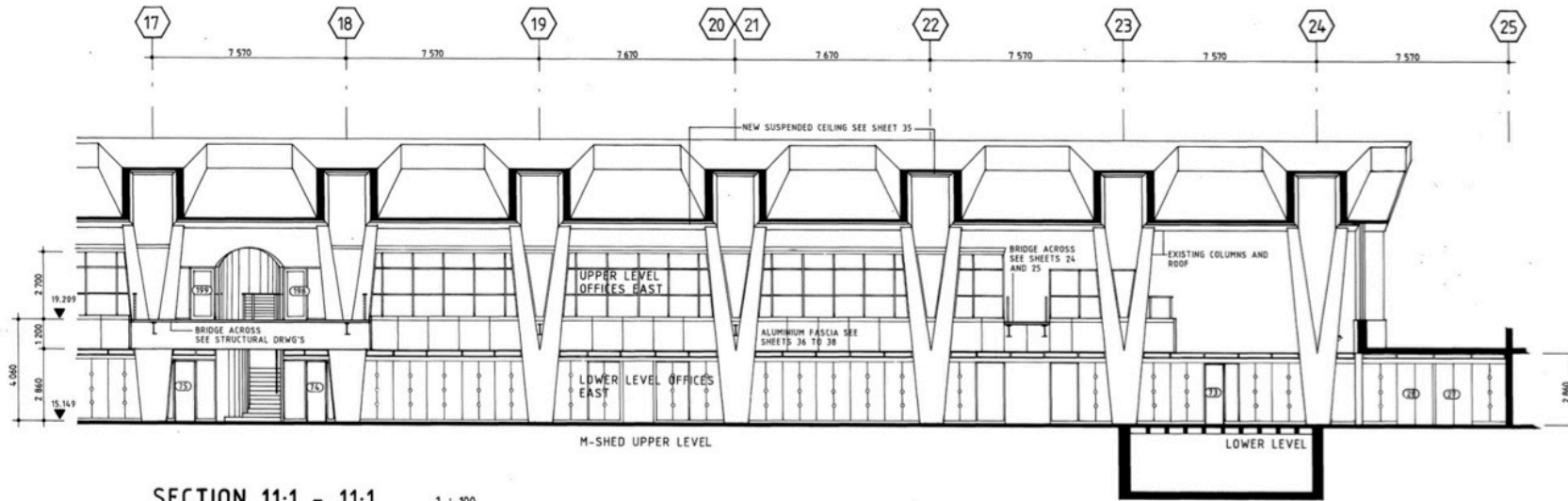


1993 - Conversion to offices Lev 3. Mezzanine Floor Offices

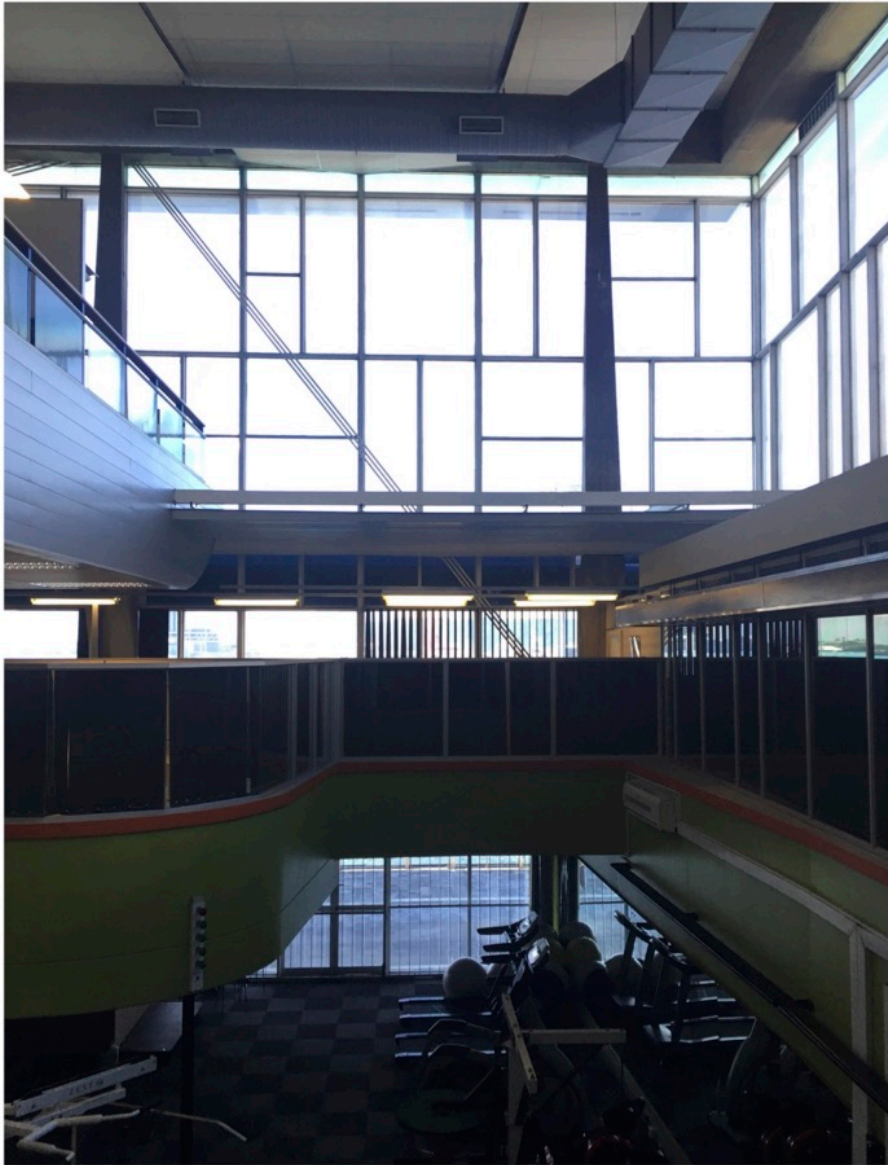


SECTION 91 - 91 1 : 50

SECTION 10.1 - 10.1 1 : 50



SECTION 11-1 - 11-1 1 : 100



Ocean Terminal, Double volumes maintained against glazed SE facade
 Image shows slim, tapered exterior facing columns
 Lower level- Gymnasium positioned in prior baggage ramp void.
 Triple diagonal bracing across glazed facade.



Ocean Terminal, Double volumes internal passage
 Image shows broad, split columns supporting
 the folded concrete roof slab
 Terazzo floor tiles from original

Interiors after 1990 Office refurbishment



Niemeyer in Brasilia, Brazil

Alvorada Palace and Chapel (1956 - 1957)
Exploring the limits and plasticity of concrete



Niemeyer. Rio de Janeiro

Ministry of Education Building (1936)
The body of the building on piloti. Integration of murals and artworks.



Beira Central Station, Mozambique

Constructed between 1958 and 1966 by the trio of architects João Garizo de Carmo, Paulo de Melo Sampaio and Francisco José Castro

Brazilian influences



Meat Board Building, Pretoria

Hellmut Stauch (1952).
Framed glazed facade, raised on piloti
Image RIBA76924

Table 1 Criteria	Building elements									
	1. Intrinsic Design Quality	2. Notable example of Building Type	3. Notable example of Style or Period	4. Portions of details of significance	5. Building Technology of local interest	6. Association with prominent Architect/engineer	7. Intactness of form	8. Intactness of detail	9. Structural and Material Condition	10. Environmental and contextual – City/group/immediate context
L Shed Levels 0 + 1						○	○		○	
M Shed Levels 0 + 1					○	○	○		○	
Ocean Terminal Building Levels 2 + 3	●	●	●	●	●	○	●	●	○	○
Durmarine Building Level 2 - 10	●	●	●	●	●	○	●	●	○	○
South service stair Lev 0 - 2	●		○	●		○	○	○		
OTB piazza and parking Lev 2						○	○		○	

L and M-Sheds are rated significant in their structural and material condition, L-shed holds the history of the Cooling system within its structure. Architectural detail is limited to the North façade of L-Shed only.

The Ocean Terminal and Durmarine Buildings are rated with high significance across all criteria, but low on environmental, historical and cultural significance.