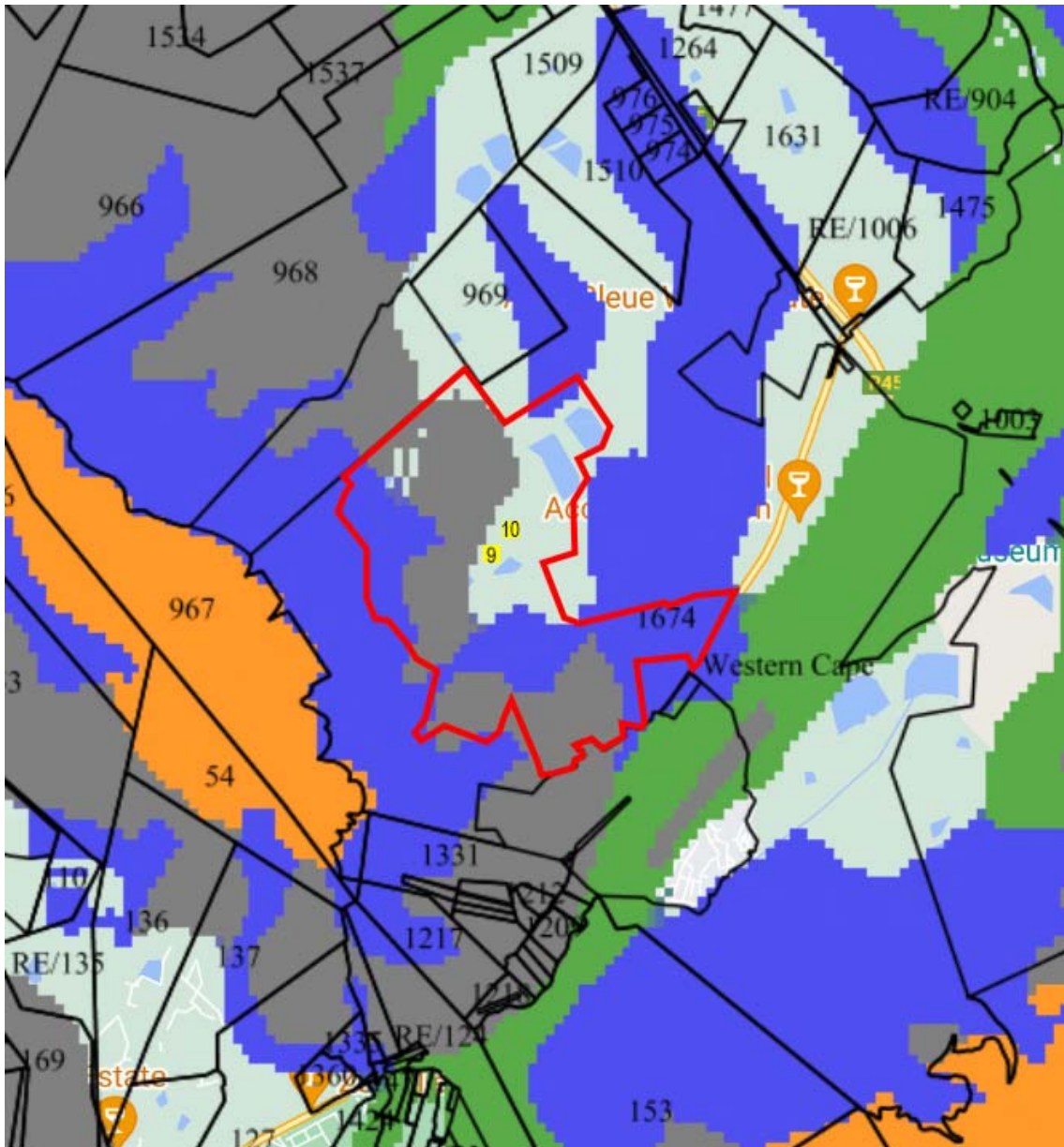


PALAEONTOLOGICAL SENSITIVITY OF FOUNDERS' ESTATES



Screen shot of palaeo-sensitivity map for Boschendal (SAHRIS) with an overlay of the Founders' Estates (red outline) and location of FE 9 and 10 (yellow squares)

Archaeologist, Katie Smuts (pers.com. 30th July 2022) has advised that this map shows the Founders Estates to be low to insignificant in terms of palaeontological sensitivity, and that in accordance with SAHRA's guidelines no palaeontological studies would be required. She further added that Cape Fold Mountains are generally devoid of fossils due to the immense pressures exerted in their formation, i.e. folded.