

Palaeontological Impact Assessment for the proposed Absa Sky City, northern Vereeniging, Gauteng Province

Desktop Study (Phase 1)

For

Beyond Heritage

29 April 2022

Prof Marion Bamford

Palaeobotanist

P Bag 652, WITS 2050

Johannesburg, South Africa

Marion.bamford@wits.ac.za

Expertise of Specialist

The Palaeontologist Consultant: Prof Marion Bamford
Qualifications: PhD (Wits Univ, 1990); FRSSAf, mASSAf
Experience: 33 years research and lecturing in Palaeontology
25 years PIA studies and over 300 projects completed

Declaration of Independence

This report has been compiled by Professor Marion Bamford, of the University of the Witwatersrand, sub-contracted by Beyond Heritage, Modimolle, South Africa. The views expressed in this report are entirely those of the author and no other interest was displayed during the decision making process for the Project.

Specialist: Prof Marion Bamford

A handwritten signature in blue ink that reads "MKBamford". The signature is written in a cursive style and is positioned above a horizontal line.

Signature:

Executive Summary

A Palaeontological Impact Assessment was requested for the proposed Absa Sky City development on vacant land portion 55 of Farm Rietspruit 152 in the northern part of Vereeniging, Gauteng Province.

To comply with the regulations of the South African Heritage Resources Agency (SAHRA) in terms of Section 38(8) of the National Heritage Resources Act, 1999 (Act No. 25 of 1999) (NHRA), a desktop Palaeontological Impact Assessment (PIA) was completed for the proposed development.

The proposed site lies on the Black Reef Formation (basal Transvaal Supergroup) that is unlikely to reserve fossils although indicated as moderately sensitive on the SAHRIS Palaeosensitivity map. Nonetheless, a Fossil Chance Find Protocol should be added to the EMP. Based on this information it is recommended that no further palaeontological impact assessment is required unless fossils are found by the contractor, environmental officer or other designated responsible person once excavations, drilling or mining activities have commenced. Since the impact will be low, as far as the palaeontology is concerned, the project should be authorised.

Table of Contents

Expertise of Specialist	1
Declaration of Independence	1
1. Background	4
2. Methods and Terms of Reference.....	7
3. Geology and Palaeontology.....	7
i. Project location and geological context	7
ii. Palaeontological context.....	9
4. Impact assessment.....	10
5. Assumptions and uncertainties.....	11
6. Recommendation.....	12
7. References	12
8. Chance Find Protocol	13
9. Appendix A – Examples of fossils	14
10. Appendix B – Details of specialist.....	14
Figure 1: Google Earth map of the general area to show the relative land marks.	6
Figure 2: Google Earth Map of the proposed development	6
Figure 3: Geological map of the area around the project site.....	7
Figure 4: SAHRIS palaeosensitivity map for the site	9

1. Background

A Palaeontological Impact Assessment (PIA) was requested for the proposed Absa Sky City development on vacant land portion 55 of Farm Rietspruit 152 in the northern part of Vereeniging, Gauteng Province (Figures 1, 2).

In order to comply with the regulations of the South African Heritage Resources Agency (SAHRA) in terms of Section 38(8) of the National Heritage Resources Act, 1999 (Act No. 25 of 1999) (NHRA), a desktop Palaeontological Impact Assessment (PIA) was completed for the proposed development and is reported herein.

Table 1: National Environmental Management Act, 1998 (Act No. 107 of 1998) (NEMA) and Environmental Impact Assessment (EIA) Regulations, 2014 (as amended) - Requirements for Specialist Reports (Appendix 6).

	A specialist report prepared in terms of the Environmental Impact Regulations of 2017 must contain:	Relevant section in report
ai	Details of the specialist who prepared the report,	Appendix B
aii	The expertise of that person to compile a specialist report including a curriculum vitae	Appendix B
b	A declaration that the person is independent in a form as may be specified by the competent authority	Page 1
c	An indication of the scope of, and the purpose for which, the report was prepared	Section 1
ci	An indication of the quality and age of the base data used for the specialist report: SAHRIS palaeosensitivity map accessed – date of this report	Yes
cii	A description of existing impacts on the site, cumulative impacts of the proposed development and levels of acceptable change	Section 5
d	The date and season of the site investigation and the relevance of the season to the outcome of the assessment	N/A
e	A description of the methodology adopted in preparing the report or carrying out the specialised process	Section 2
f	The specific identified sensitivity of the site related to the activity and its associated structures and infrastructure	Section 4
g	An identification of any areas to be avoided, including buffers	N/A
h	A map superimposing the activity including the associated structures and infrastructure on the environmental sensitivities of the site including areas to be avoided, including buffers;	N/A
i	A description of any assumptions made and any uncertainties or gaps in knowledge;	Section 5

	A specialist report prepared in terms of the Environmental Impact Regulations of 2017 must contain:	Relevant section in report
j	A description of the findings and potential implications of such findings on the impact of the proposed activity, including identified alternatives, on the environment	Section 4
k	Any mitigation measures for inclusion in the EMPr	Section 8, Appendix A
l	Any conditions for inclusion in the environmental authorisation	N/A
m	Any monitoring requirements for inclusion in the EMPr or environmental authorisation	Section 8, Appendix A
ni	A reasoned opinion as to whether the proposed activity or portions thereof should be authorised	Section 6
nii	If the opinion is that the proposed activity or portions thereof should be authorised, any avoidance, management and mitigation measures that should be included in the EMPr, and where applicable, the closure plan	Sections 6, 8
o	A description of any consultation process that was undertaken during the course of carrying out the study	N/A
p	A summary and copies of any comments that were received during any consultation process	N/A
q	Any other information requested by the competent authority.	N/A
2	Where a government notice gazetted by the Minister provides for any protocol or minimum information requirement to be applied to a specialist report, the requirements as indicated in such notice will apply.	N/A

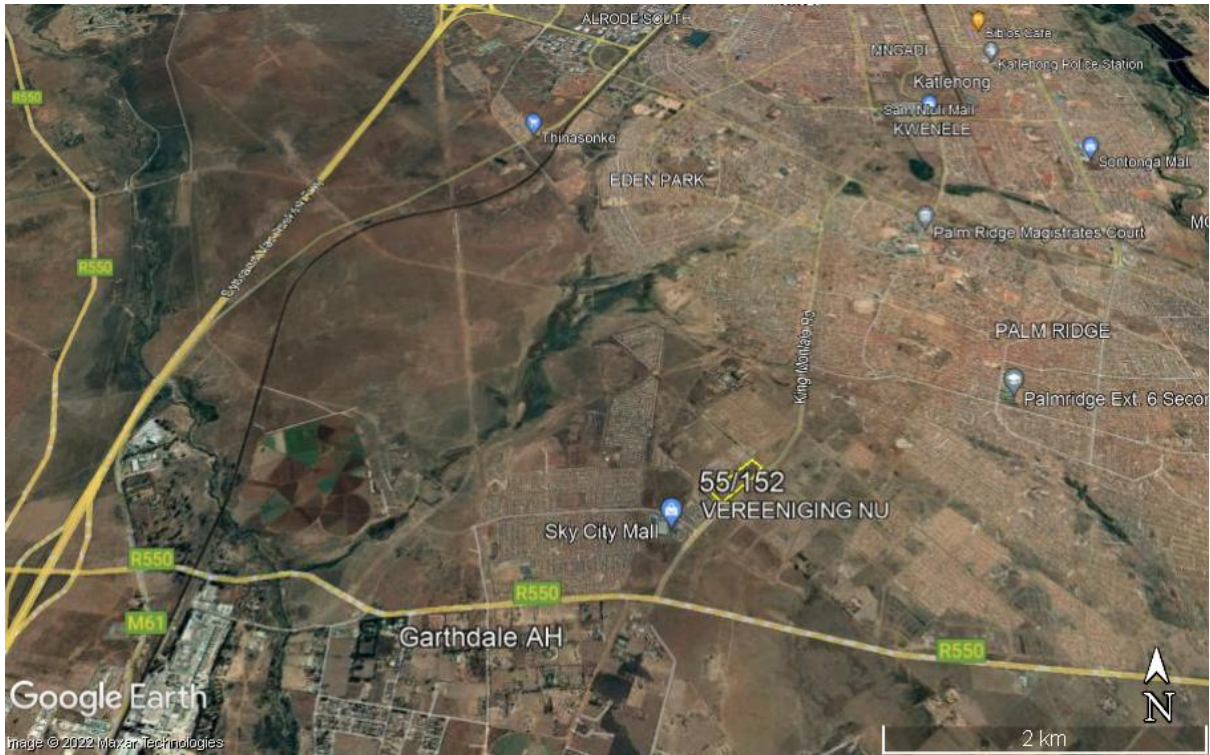


Figure 1: Google Earth map of the general area to show the relative land marks. The Absa Sky City site is shown by the yellow rectangle labelled 55/152.



Figure 2: Google Earth Map of the proposed development of the Absa Sky City on Portion 55 of Farm Rietspruit 152 shown by the yellow outline.

2. Methods and Terms of Reference

The Terms of Reference (ToR) for this study were to undertake a PIA and provide feasible management measures to comply with the requirements of SAHRA.

The methods employed to address the ToR included:

1. Consultation of geological maps, literature, palaeontological databases, published and unpublished records to determine the likelihood of fossils occurring in the affected areas. Sources included records housed at the Evolutionary Studies Institute at the University of the Witwatersrand and SAHRA databases;
2. Where necessary, site visits by a qualified palaeontologist to locate any fossils and assess their importance (*not applicable to this assessment*);
3. Where appropriate, collection of unique or rare fossils with the necessary permits for storage and curation at an appropriate facility (*not applicable to this assessment*); and
4. Determination of fossils' representivity or scientific importance to decide if the fossils can be destroyed or a representative sample collected (*not applicable to this assessment*).

3. Geology and Palaeontology

i. Project location and geological context

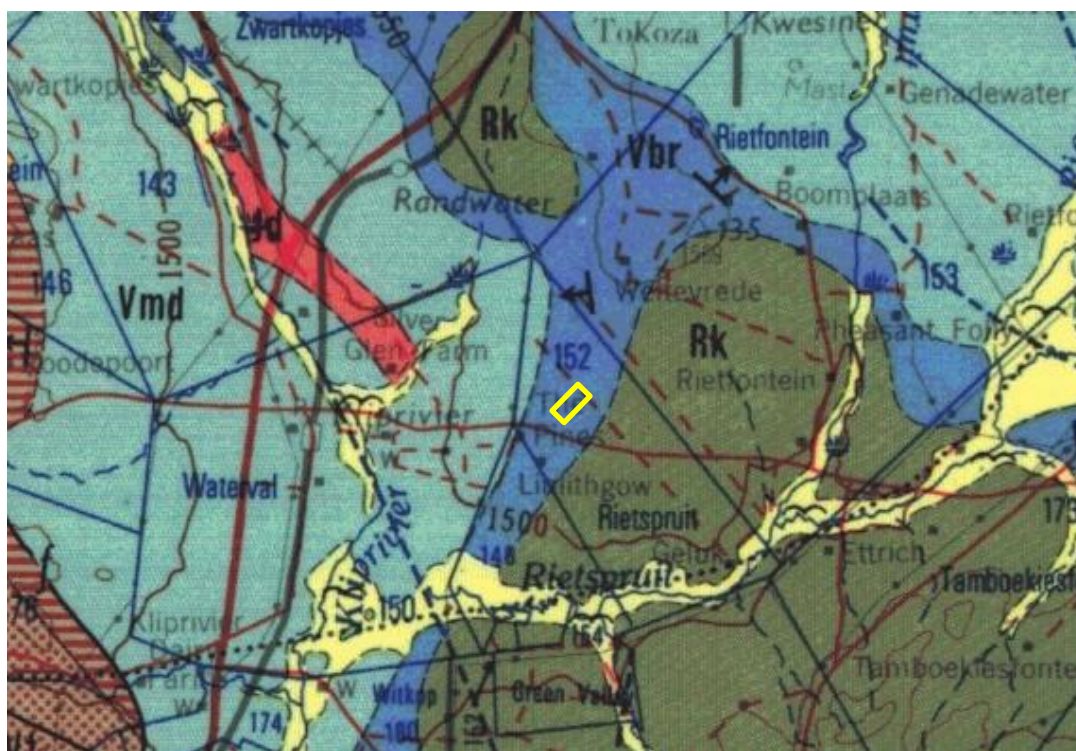


Figure 3: Geological map of the area around the Absa Sky City project. The location of the proposed project is indicated within the yellow rectangle. Abbreviations of the rock types are explained in Table 2. Map enlarged from the Geological Survey 1: 250 000 map 2628 East Rand.

Table 2: Explanation of symbols for the geological map and approximate ages (Eriksson et al., 2006; van der Westhuizen et al., 2006). SG = Supergroup; Fm = Formation; Ma = million years; grey shading = formations impacted by the project.

Symbol	Group/Formation	Lithology	Approximate Age
Q	Quaternary	Alluvium, sand, calcrete	Neogene, ca 2.5 Ma to present
Vmd	Malmani Subgroup, Chuniespoort Group, Transvaal SG	Dolomite, chert	Ca 2750 – 2650 Ma
Vbr	Black Reef Fm, Transvaal SG	Quartzite, conglomerate, shale, basalt	Ca 2650 – 2640 Ma
Rk	Klipriviersberg Group, Ventersdorp SG	Andesite, tuff	Ca 2714 Ma

The project lies in the southern part of the Transvaal Basin where the basal formations are of the Transvaal Supergroup are preserved. They overlie the volcanic rocks of the Ventersdorp Supergroup, in this area, the Klipriviersberg Group (Figure 3).

The Late Archaean to early Proterozoic Transvaal Supergroup is preserved in three structural basins on the Kaapvaal Craton (Eriksson et al., 2006). In South Africa are the Transvaal and Griqualand West Basins, and the Kanye Basin is in southern Botswana. The Griqualand West Basin is divided into the Ghaap Plateau sub-basin and the Prieska sub-basin. Sediments in the lower parts of the basins are very similar but they differ somewhat higher up the sequences. Several tectonic events have greatly deformed the south western portion of the Griqualand West Basin between the two sub-basins

The Transvaal Supergroup comprises one of world's earliest carbonate platform successions (Beukes, 1987; Eriksson et al., 2006; Zeh et al., 2020). In some areas there are well preserved stromatolites that are evidence of the photosynthetic activity of blue green bacteria and green algae. These microbes formed colonies in warm, shallow seas.

In the Transvaal Basin the Transvaal Supergroup the basal formation is the Black Reef Formation. The rest is divided into two Groups, the lower Chuniespoort Group and the upper Pretoria Group (with ten formations; Eriksson et al., 2006). The Chuniespoort Group is divided into the basal Malmani Subgroup that comprises dolomites and limestones and is divided into five formations based on chert content, stromatolitic morphology, intercalated shales and erosion surfaces. The top of the Chuniespoort Group has the Penge Formation and the Deutschland Formation.

The overlying lower Pretoria Group with the Timeball Hill Formation and the Boshoeck Formation are just visible in the left of the map.

The Transvaal sequence has been interpreted as three major cycles of basin infill and tectonic activity with the first deep basin sediments forming the Chuniespoort Group, the second cycle deposited the lower Pretoria Group, and the sediments in this area are from the interim lowstand that preceded the third cycle. These sediments were

deposited in shallow lacustrine, alluvial fan and braided stream environments (Eriksson et al., 2012).

ii. Palaeontological context

The palaeontological sensitivity of the area under consideration is presented in Figure 4. The site for development is in the Black Reef Formation that is indicated as moderately sensitive (green) in the SAHRIS map.

The Black Reef Formation is below the Transvaal Supergroup (Eriksson et al., 2006), or is considered as being included in the basal Transvaal Supergroup (Zeh et al., 2020). It is composed of quartz arenites that are relatively mature and lesser amounts of mudrocks and conglomerates. It is a widespread but relatively thin sheet sandstone with a series of fining-upward sequences (Eriksson et al., 2006) that have been interpreted in a number of ways. One model indicates fluvial setting followed by shallow marine epeiric setting and the other model a purely fluvial setting (Eriksson et al., 2006).

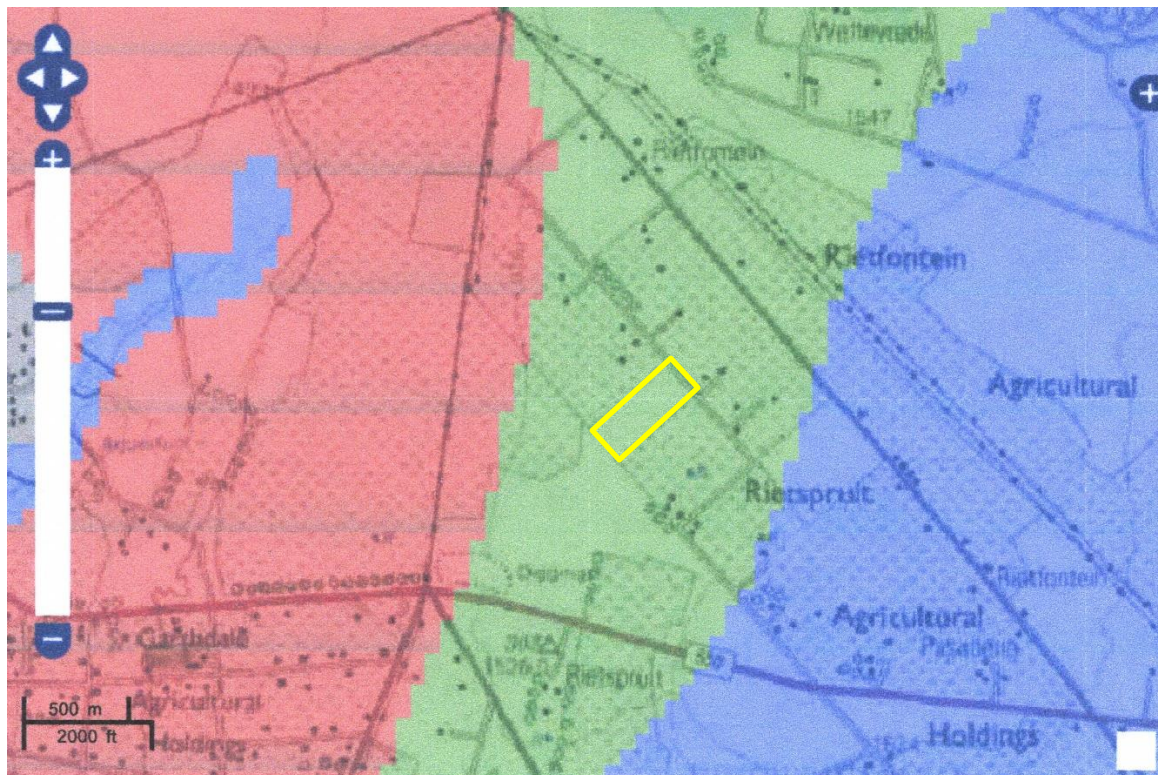


Figure 4: SAHRIS palaeosensitivity map for the site for the proposed Absa Sky City development shown within the yellow rectangle. Background colours indicate the following degrees of sensitivity: red = very highly sensitive; orange/yellow = high; green = moderate; blue = low; grey = insignificant/zero.

In the SAHRA Palaeotechnical report for Gauteng (Groenewald et al., 2014) they claim that because the Black Reef Formation is a possible equivalent of the Northern Cape Vryburg Formation (that contains stromatolitic carbonates), is likely that the Black Reef Formation does do so. More recent research does not support the indication that they are equivalent facies (Frauntein et al., 2009). In addition, stromatolites occur in

dolomites and carbonaceous rocks, not in arenites and quartzites, so it very unlikely that any such trace fossils occur in the Black Reef Formation.

4. Impact assessment

An assessment of the potential impacts to possible palaeontological resources considers the criteria encapsulated in Table 3:

Table 3a: Criteria for assessing impacts

PART A: DEFINITION AND CRITERIA		
Criteria for ranking of the SEVERITY/NATURE of environmental impacts	H	Substantial deterioration (death, illness or injury). Recommended level will often be violated. Vigorous community action.
	M	Moderate/ measurable deterioration (discomfort). Recommended level will occasionally be violated. Widespread complaints.
	L	Minor deterioration (nuisance or minor deterioration). Change not measurable/ will remain in the current range. Recommended level will never be violated. Sporadic complaints.
	L+	Minor improvement. Change not measurable/ will remain in the current range. Recommended level will never be violated. Sporadic complaints.
	M+	Moderate improvement. Will be within or better than the recommended level. No observed reaction.
	H+	Substantial improvement. Will be within or better than the recommended level. Favourable publicity.
Criteria for ranking the DURATION of impacts	L	Quickly reversible. Less than the project life. Short term
	M	Reversible over time. Life of the project. Medium term
	H	Permanent. Beyond closure. Long term.
Criteria for ranking the SPATIAL SCALE of impacts	L	Localised - Within the site boundary.
	M	Fairly widespread – Beyond the site boundary. Local
	H	Widespread – Far beyond site boundary. Regional/ national
PROBABILITY (of exposure to impacts)	H	Definite/ Continuous
	M	Possible/ frequent
	L	Unlikely/ seldom

Table 3b: Impact Assessment

PART B: Assessment		
SEVERITY/NATURE	H	-
	M	-

PART B: Assessment		
	L	Soils and quartzites do not preserve fossils; so far there are no records from the Black Reef Fm of trace fossils such as stromatolites in this region or any other region so it is very unlikely that fossils occur on the site. The impact would be negligible
	L+	-
	M+	-
	H+	-
DURATION	L	-
	M	-
	H	Where manifest, the impact will be permanent.
SPATIAL SCALE	L	Since the only possible fossils within the area would be trace fossils in carbonaceous rocks, the spatial scale will be localised within the site boundary.
	M	-
	H	-
PROBABILITY	H	-
	M	-
	L	It is extremely unlikely that any fossils would be found in the loose soils and sands that cover the area or in the quartzites of the Black Reef Fm. Nonetheless, a Fossil Chance Find Protocol should be added to the eventual EMPr.

Based on the nature of the project, surface activities may impact upon the fossil heritage if preserved in the development footprint. The geological structures suggest that the rocks are either much too old to contain fossils or of the wrong kind. Furthermore, the material to be excavated will be surface soils and the rocks below, for foundations and these do not preserve fossils. Since there is an extremely small chance that there might be trace fossils in the Black Reef Vryheid Formation may be disturbed a Fossil Chance Find Protocol has been added to this report. Taking account of the defined criteria, the potential impact to fossil heritage resources is extremely low.

5. Assumptions and uncertainties

Based on the geology of the area and the palaeontological record as we know it, it can be assumed that the formation and layout of the dolomites, sandstones, shales and sands are typical for the country and only some contain trace fossils such as stromatolites. The overlying soils and sands of the Quaternary period would not preserve fossils.

6. Recommendation

Based on experience and the lack of any previously recorded fossils from the area, it is extremely unlikely that any fossils would be preserved in the sands and soils of the Quaternary. There is a very small chance that fossils may occur in the Black Reef formation according to the SAHRA Palaeotechnical Report, but the geology and more recent research do not support this claim. Nonetheless, a Fossil Chance Find Protocol should be added to the EMPr. If fossils are found by the contractor, environmental officer, or other responsible person once excavations for foundations and amenities have commenced then they should be rescued and a palaeontologist called to assess and collect a representative sample. Since the impact on the palaeontological heritage would be very low, as far as the palaeontology is concerned, the project should be authorised.

7. References

Beukes, N.J., 1987. Facies relations, depositional environments, and diagenesis in a major early Proterozoic stromatolitic carbonate platform to basinal sequence, Campbell Rand Subgroup, Transvaal Supergroup, southern Africa. *Sedimentary Geology* 54, 1-46.

Eriksson, P.G., Altermann, W., Hartzler, F.J., 2006. The Transvaal Supergroup and its precursors. In: Johnson, M.R., Anhaeusser, C.R. and Thomas, R.J., (Eds). *The Geology of South Africa*. Geological Society of South Africa, Johannesburg / Council for Geoscience, Pretoria. pp 237-260.

Eriksson, P.G., Bartman, R., Catuneanu, O., Mazumder, R., Lenhardt, N., 2012. A case study of microbial mats-related features in coastal epeiric sandstones from the Palaeoproterozoic Pretoria Group, Transvaal Supergroup, Kaapvaal craton, South Africa; the effect of preservation (reflecting sequence stratigraphic models) on the relationship between mat features and inferred palaeoenvironment. *Sedimentary Geology* 263, 67-75.

Frauenstein, F., Veizer, J., Beukes, N., Van Niekerk, H.S., Coetzee, L.L., 2009. Transvaal Supergroup carbonates: Implications for Paleoproterozoic $\delta^{18}O$ and $\delta^{13}C$ records. *Precambrian Research* 175, 149-160.

Groenewald, G., Groenewald, D., Groenewald, S., 2014. SAHRA Palaeotechnical Report. Palaeontological Heritage of Gauteng. 20 pages.

Plumstead, E.P., 1969. Three thousand million years of plant life in Africa. Geological Society of southern Africa, Annexure to Volume LXXII. 72pp + 25 plates.

Van der Westhuizen, W.A., de Bruijn, H., Meintjes, P.G., 2006. The Ventersdorp Supergroup. In: Johnson, M.R., Anhaeusser, C.R. and Thomas, R.J., (Eds). *The Geology of South Africa*. Geological Society of South Africa, Johannesburg / Council for Geoscience, Pretoria. pp 187-208.

Zeh, A., Wilson, A.H., Gerdes, A., 2020. Zircon U-Pb-Hf isotope systematics of Transvaal Supergroup – Constraints for the geodynamic evolution of the Kaapvaal Craton and its hinterland between 2.65 and 2.06 Ga. *Precambrian Research* 345, 105760. <https://doi.org/10.1016/j.precamres.2020.105760>

8. Chance Find Protocol

Monitoring Programme for Palaeontology – to commence once the excavations / drilling activities begin.

1. The following procedure is only required if fossils are seen on the surface and when drilling/excavations commence.
2. When excavations begin the rocks and must be given a cursory inspection by the environmental officer or designated person. Any fossiliferous material (plants, insects, bone or coal) should be put aside in a suitably protected place. This way the project activities will not be interrupted.
3. Photographs of similar fossils must be provided to the developer to assist in recognizing the fossil plants, vertebrates, invertebrates or trace fossils in the shales and mudstones (for example see Figure 5). This information will be built into the EMP's training and awareness plan and procedures.
4. Photographs of the putative fossils can be sent to the palaeontologist for a preliminary assessment.
5. If there is any possible fossil material found by the developer/environmental officer then the qualified palaeontologist sub-contracted for this project, should visit the site to inspect the selected material and check the dumps where feasible.
6. Fossil plants or vertebrates that are considered to be of good quality or scientific interest by the palaeontologist must be removed, catalogued and housed in a suitable institution where they can be made available for further study. Before the fossils are removed from the site a SAHRA permit must be obtained. Annual reports must be submitted to SAHRA as required by the relevant permits.
7. If no good fossil material is recovered then no site inspections by the palaeontologist will be necessary. A final report by the palaeontologist must be sent to SAHRA once the project has been completed and only if there are fossils.
8. If no fossils are found and the excavations have finished then no further monitoring is required.

9. Appendix A – Examples of fossils from the Malmani Subgroup.



Weathering of dolomite



Small domal stromatolites



Side view of a stromatolite



Surface view of domal stromatolites

Figure 5: Photographs of stromatolites in the field from the Malmani Subgroup. If stromatolites occur in the Black Reef Formation they would look something like these.

10. Appendix B – Details of specialist

**Curriculum vitae (short) - Marion Bamford PhD
January 2022**

I) Personal details

Surname : **Bamford**
First names : **Marion Kathleen**
Present employment: Professor; Director of the Evolutionary Studies Institute.
Member Management Committee of the NRF/DST Centre of Excellence Palaeosciences, University of the Witwatersrand,

Johannesburg, South Africa
 Telephone : +27 11 717 6690
 Fax : +27 11 717 6694
 Cell : 082 555 6937
 E-mail : marion.bamford@wits.ac.za ;
marionbamford12@gmail.com

ii) Academic qualifications

Tertiary Education: All at the University of the Witwatersrand:
 1980-1982: BSc, majors in Botany and Microbiology. Graduated April 1983.
 1983: BSc Honours, Botany and Palaeobotany. Graduated April 1984.
 1984-1986: MSc in Palaeobotany. Graduated with Distinction, November 1986.
 1986-1989: PhD in Palaeobotany. Graduated in June 1990.
 NRF Rating: C-2 (1999-2004); B-3 (2005-2015); B-2 (2016-2020); B-1 (2021-2026)

iii) Professional qualifications

Wood Anatomy Training (overseas as nothing was available in South Africa):
 1994 - Service d'Anatomie des Bois, Musée Royal de l'Afrique Centrale, Tervuren, Belgium, by Roger Dechamps
 1997 - Université Pierre et Marie Curie, Paris, France, by Dr Jean-Claude Koeniguer
 1997 - Université Claude Bernard, Lyon, France by Prof Georges Barale, Dr Jean-Pierre Gros, and Dr Marc Philippe

iv) Membership of professional bodies/associations

Palaeontological Society of Southern Africa
 Royal Society of Southern Africa - Fellow: 2006 onwards
 Academy of Sciences of South Africa - Member: Oct 2014 onwards
 International Association of Wood Anatomists - First enrolled: January 1991
 International Organization of Palaeobotany - 1993+
 Botanical Society of South Africa
 South African Committee on Stratigraphy - Biostratigraphy - 1997 - 2016
 SASQUA (South African Society for Quaternary Research) - 1997+
 PAGES - 2008 -onwards: South African representative
 ROCEEH / WAVE - 2008+
 INQUA - PALCOMM - 2011+onwards

vii) Supervision of Higher Degrees

All at Wits University

Degree	Graduated/completed	Current
Honours	13	0
Masters	11	3
PhD	11	6
Postdoctoral fellows	15	1

viii) Undergraduate teaching

Geology II - Palaeobotany GEOL2008 - average 65 students per year
 Biology III - Palaeobotany APES3029 - average 45 students per year

Honours – Evolution of Terrestrial Ecosystems; African Plio-Pleistocene Palaeoecology; Micropalaeontology – average 12-20 students per year.

ix) Editing and reviewing

Editor: *Palaeontologia africana*: 2003 to 2013; 2014 – Assistant editor

Guest Editor: *Quaternary International*: 2005 volume

Member of Board of Review: *Review of Palaeobotany and Palynology*: 2010 –

Associate Editor *Open Science UK*: 2021 -

Review of manuscripts for ISI-listed journals: 30 local and international journals

Reviewing of funding applications for NRF, PAST, NWO, SIDA, National Geographic,

Leakey Foundation

x) Palaeontological Impact Assessments

Selected from the past five years only – list not complete:

- Mala Mala 2017 for Henwood
- Modimolle 2017 for Green Vision
- Klippoortjie and Finaalspan 2017 for Delta BEC
- Ledjadja borrow pits 2018 for Digby Wells
- Lungile poultry farm 2018 for CTS
- Olienhout Dam 2018 for JP Celliers
- Isondlo and Kwasobabili 2018 for GCS
- Kanakies Gypsum 2018 for Cabanga
- Nababeep Copper mine 2018
- Glencore-Mbali pipeline 2018 for Digby Wells
- Remhoogte PR 2019 for A&HAS
- Bospoort Agriculture 2019 for Kudzala
- Overlooked Quarry 2019 for Cabanga
- Richards Bay Powerline 2019 for NGT
- Eilandia dam 2019 for ACO
- Eastlands Residential 2019 for HCAC
- Fairview MR 2019 for Cabanga
- Graspan project 2019 for HCAC
- Lieliefontein N&D 2019 for EnviroPro
- Skeerpoort Farm Mast 2020 for HCAC
- Vulindlela Eco village 2020 for 1World
- KwaZamakhule Township 2020 for Kudzala
- Sunset Copper 2020 for Digby Wells
- McCarthy-Salene 2020 for Prescali
- VLNR Lodge 2020 for HCAC
- Madadeni mixed use 2020 for EnviroPro
- Frankfort-Windfield Eskom Powerline 2020 for 1World
- Beaufort West PV Facility 2021 for ACO Associates
- Copper Sunset MR 2021 for Digby Wells
- Sannaspos PV facility 2021 for CTS Heritage
- Smithfield-Rouxville-Zastron PL 2021 for TheroServe

xi) Research Output

Publications by M K Bamford up to January 2022 peer-reviewed journals or scholarly books: over 160 articles published; 5 submitted/in press; 10 book chapters.
Scopus h-index = 30; Google scholar h-index = 35; -i10-index = 92
Conferences: numerous presentations at local and international conferences.