

**Palaeontological Impact Assessment for the
proposed Gledhow Ptn 16 Light Industrial
Development, KwaDukuza,
KwaZulu Natal Province**

Desktop Study (Phase 1)

For

JLB Consulting

23 February 2023

Prof Marion Bamford

Palaeobotanist

P Bag 652, WITS 2050

Johannesburg, South Africa

Marion.bamford@wits.ac.za

Expertise of Specialist

The Palaeontologist Consultant: Prof Marion Bamford
Qualifications: PhD (Wits Univ, 1990); FRSSAf, mASSAf
Experience: 34 years research and lecturing in Palaeontology
26 years PIA studies and over 350 projects completed

Declaration of Independence

This report has been compiled by Professor Marion Bamford, of the University of the Witwatersrand, sub-contracted by JLB Consulting, Durban, South Africa. The views expressed in this report are entirely those of the author and no other interest was displayed during the decision-making process for the Project.

Specialist: Prof Marion Bamford

A handwritten signature in blue ink, appearing to read 'MKBamford', with a horizontal line underneath.

Signature:

Executive Summary

A Palaeontological Impact Assessment was requested for the proposed Light Industrial development on Portion 16f Farm Gledhow No. 1983 located within the KwaDukuza Local Municipality, iLembe District, KwaZulu Natal. SMA Consultants, on behalf of the landowner, propose to construct a “light industrial” development on Portion 16 of Farm Gledhow Mount No. 1983.

To comply with the regulations of the South African Heritage Resources Agency (SAHRA) in terms of Section 38(8) of the National Heritage Resources Act, 1999 (Act No. 25 of 1999) (NHRA), a desktop Palaeontological Impact Assessment (PIA) was completed for the proposed development.

The proposed site lies on the Pietermaritzburg Formation that rarely has trace fossils. The area is already very disturbed and covered by soils and sugar cane crops so it is unlikely to find fossils until the ground is broken. Therefore, a Fossil Chance Find Protocol should be added to the EMPr. Based on this information it is recommended that no further palaeontological impact assessment is required unless fossils are found by the contractor, developer, environmental officer or any other designated responsible person once excavations for foundations, amenities and roads have commenced. As far as the palaeontology is concerned, the project should be authorised.

Table of Contents

Expertise of Specialist	1
Declaration of Independence	1
1. Background	4
2. Methods and Terms of Reference.....	7
3. Geology and Palaeontology.....	7
i. Project location and geological context	7
ii. Palaeontological context.....	9
4. Impact assessment.....	10
5. Assumptions and uncertainties.....	11
6. Recommendation.....	11
7. References	12
8. Chance Find Protocol	13
9. Appendix A – Examples of fossils	14
10. Appendix B – Details of specialist.....	15
Figures 1-2: Google Earth map of the general area to show the relative land marks.	6
Figure 3: Geological map of the area around the project site.....	7
Figure 4: SAHRIS palaeosensitivity map for the site	9

1. Background

uShukela Milling (Pty) Ltd are the landowners of various portions of Farm Gledhow Mount No. 1983 located within the KwaDukuza Local Municipality, iLembe District (parent farm outlined in red in Figure 1). Farm Gledhow Mount No. 1983 has recently been subdivided to unlock development opportunities. SMA Consultants, on behalf of the landowner, propose to construct a “light industrial” development on Portion 16 of Farm Gledhow Mount No. 1983 (outlined in yellow in Figure 2). The property is currently zoned Agriculture 1 with portions of the property still being used for sugarcane farming. The light industrial development will consist of platforms, parking bays and an internal road network (public and service roads).

The development will connect to the existing municipal services network in the area. The total footprint of the industrial development is approximately 7.7 hectares (pending final layout). The proposed layout is provided in Figure 2.

A Palaeontological Impact Assessment was requested for the Gledhow Light Industrial Development project. To comply with the regulations of the South African Heritage Resources Agency (SAHRA) in terms of Section 38(8) of the National Heritage Resources Act, 1999 (Act No. 25 of 1999) (NHRA), a desktop Palaeontological Impact Assessment (PIA) was completed for the proposed development and is reported herein.

Table 1: National Environmental Management Act, 1998 (Act No. 107 of 1998) (NEMA) and Environmental Impact Assessment (EIA) Regulations, 2014 (as amended) - Requirements for Specialist Reports (Appendix 6).

	A specialist report prepared in terms of the Environmental Impact Regulations of 2017 must contain:	Relevant section in report
ai	Details of the specialist who prepared the report,	Appendix B
aii	The expertise of that person to compile a specialist report including a curriculum vitae	Appendix B
b	A declaration that the person is independent in a form as may be specified by the competent authority	Page 1
c	An indication of the scope of, and the purpose for which, the report was prepared	Section 1
ci	An indication of the quality and age of the base data used for the specialist report: SAHRIS palaeosensitivity map accessed – date of this report	Yes
cii	A description of existing impacts on the site, cumulative impacts of the proposed development and levels of acceptable change	Section 5
d	The date and season of the site investigation and the relevance of the season to the outcome of the assessment	N/A
e	A description of the methodology adopted in preparing the report or carrying out the specialised process	Section 2

	A specialist report prepared in terms of the Environmental Impact Regulations of 2017 must contain:	Relevant section in report
f	The specific identified sensitivity of the site related to the activity and its associated structures and infrastructure	Section 4
g	An identification of any areas to be avoided, including buffers	N/A
h	A map superimposing the activity including the associated structures and infrastructure on the environmental sensitivities of the site including areas to be avoided, including buffers;	N/A
i	A description of any assumptions made and any uncertainties or gaps in knowledge;	Section 5
j	A description of the findings and potential implications of such findings on the impact of the proposed activity, including identified alternatives, on the environment	Section 4
k	Any mitigation measures for inclusion in the EMPr	Section 8, Appendix A
l	Any conditions for inclusion in the environmental authorisation	N/A
m	Any monitoring requirements for inclusion in the EMPr or environmental authorisation	Section 8, Appendix A
ni	A reasoned opinion as to whether the proposed activity or portions thereof should be authorised	Section 6
nii	If the opinion is that the proposed activity or portions thereof should be authorised, any avoidance, management and mitigation measures that should be included in the EMPr, and where applicable, the closure plan	Sections 6, 8
o	A description of any consultation process that was undertaken during the course of carrying out the study	N/A
p	A summary and copies of any comments that were received during any consultation process	N/A
q	Any other information requested by the competent authority.	N/A
2	Where a government notice gazetted by the Minister provides for any protocol or minimum information requirement to be applied to a specialist report, the requirements as indicated in such notice will apply.	N/A

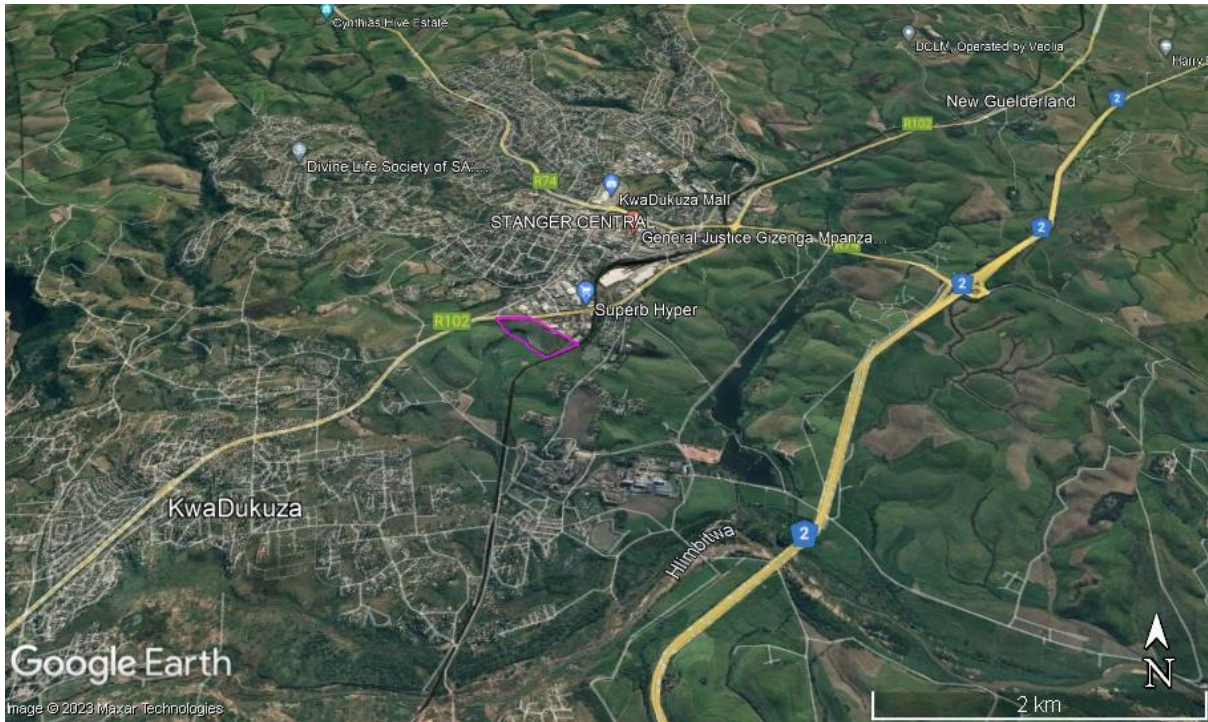


Figure 1: Google Earth map of the general area to show the relative land marks. The purple polygon indicates the proposed Gledhow Ptn 16 Light Industrial site.



Figure 2: Annotated Aerial map to show the boundary of the proposed Light Industrial development on Gledhow Farm Ptn 16 within the yellow outline.

2. Methods and Terms of Reference

The Terms of Reference (ToR) for this study were to undertake a PIA and provide feasible management measures to comply with the requirements of SAHRA.

The methods employed to address the ToR included:

1. Consultation of geological maps, literature, palaeontological databases, published and unpublished records to determine the likelihood of fossils occurring in the affected areas. Sources included records housed at the Evolutionary Studies Institute at the University of the Witwatersrand and SAHRA databases;
2. Where necessary, site visits by a qualified palaeontologist to locate any fossils and assess their importance (*not applicable to this assessment*);
3. Where appropriate, collection of unique or rare fossils with the necessary permits for storage and curation at an appropriate facility (*not applicable to this assessment*); and
4. Determination of fossils' representivity or scientific importance to decide if the fossils can be destroyed or a representative sample collected (*not applicable to this assessment*).

3. Geology and Palaeontology

i. Project location and geological context

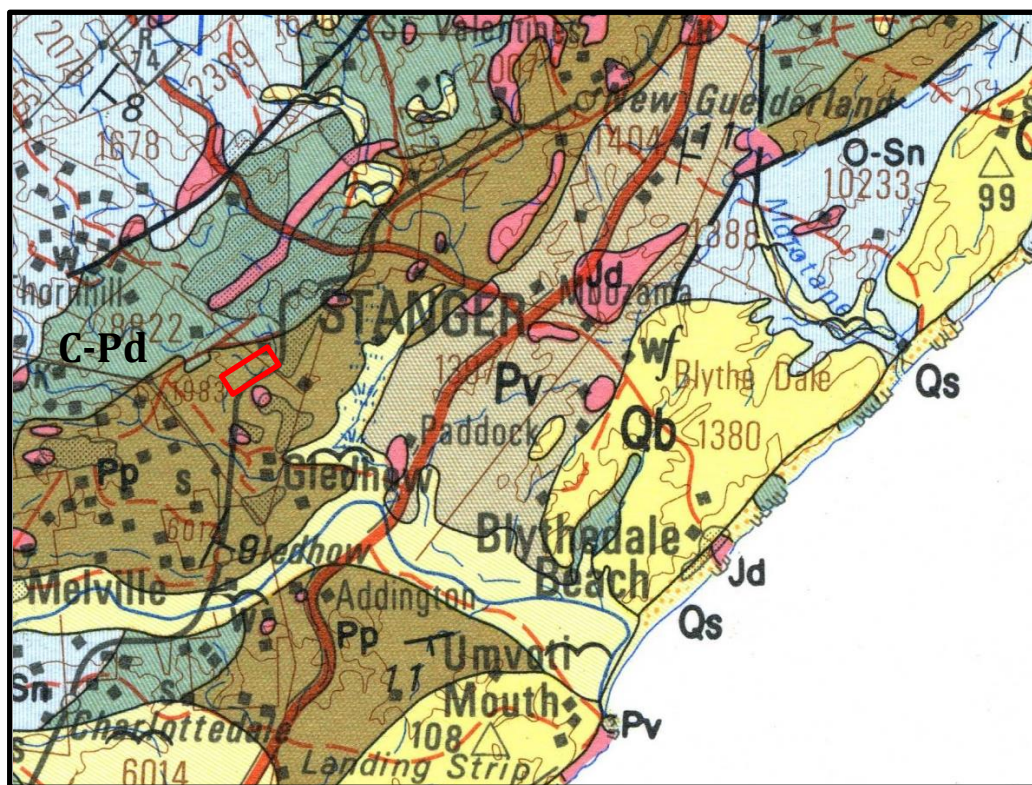


Figure 3: Geological map of the area around the proposed Light Industrial development on Gledhow Farm Ptn 16 indicated within the red outline. Abbreviations of the rock types are explained in Table 2. Map enlarged from the Geological Survey 1: 250 000 map 2930 Durban.

Table 2: Explanation of symbols for the geological map and approximate ages (Botha, 2018; Johnson et al., 2006). SG = Supergroup; Fm = Formation; Ma = million years; grey shading = formations impacted by the project.

Symbol	Group/Formation	Lithology	Approximate Age
Qb	Umkwelane Fm (was Berea Fm), Maputaland Group	Alluvium, sand, calcrete	Late Quaternary, ca 2.5 Ma to present
Jd	Jurassic dykes	Dolerite dykes, intrusive	Jurassic, approx. 180 Ma
Pv	Vryheid Fm, Eccca Group, Karoo SG	Shales, sandstone, coal	Early Permian, Middle Eccca
Pp	Pietermaritzburg Fm, Eccca Group, Karoo SG	Grey-black fine-grained shales, mudstone	Early Permian, lower Eccca
C-Pd	Dwyka Group	Diamictite, tillites,	Late Carboniferous to Early Permian
O-Sn	Natal Group	Quartzites	Ordovician - Silurian

The project lies in the southeastern part of the Karoo Basin where the Eccca Group rocks are well exposed. Much younger aeolian sands, alluvium and sands of the Maputaland Group overlie the older rocks (Figure 3).

The Karoo Supergroup rocks cover a very large proportion of South Africa and extend from the northeast (east of Pretoria) to the southwest and across to almost the KwaZulu Natal south coast. It is bounded along the southern margin by the Cape Fold Belt and along the northern margin by the much older Transvaal Supergroup rocks. Representing some 120 million years (300 – 183Ma), the Karoo Supergroup rocks have preserved a diversity of fossil plants, insects, vertebrates and invertebrates.

During the Carboniferous Period South Africa was part of the huge continental landmass known as Gondwanaland and it was positioned over the South Pole. As a result, there were several ice sheets that formed and melted, and covered most of South Africa. Gradual melting of the ice as the continental mass moved northwards and the earth warmed, formed fine-grained sediments in the large inland sea. These are the oldest rocks in the system and are exposed around the outer part of the ancient Karoo Basin, and are known as the Dwyka Group (Johnson et al., 2006).

Overlying the Dwyka Group rocks are rocks of the Eccca Group that are Early Permian in age. There are eleven formations recognised in this group but they do not all extend throughout the Karoo Basin. In the Free State and KwaZulu Natal, from the base upwards are the Pietermaritzburg Formation, Vryheid Formation and the Volksrust Formation. All of these sediments have varying proportions of sandstones, mudstones, shales and siltstones and represent shallow to deep water settings, deltas, rivers, streams and overbank depositional environments.

Overlying the Eccca Group are the rocks of the Beaufort Group, and then the Stormberg Group. Large exposures of Jurassic dolerite dykes occur throughout the area. These intruded through the Karoo sediments around 183 million years ago at about the same time as the Drakensberg basaltic eruption.

Unconformably overlying the Karoo Supergroup rocks are the considerably younger Maputaland Group aeolian sands, dune and beach sands. Quaternary alluvium is present along many watercourses.

ii. Palaeontological context

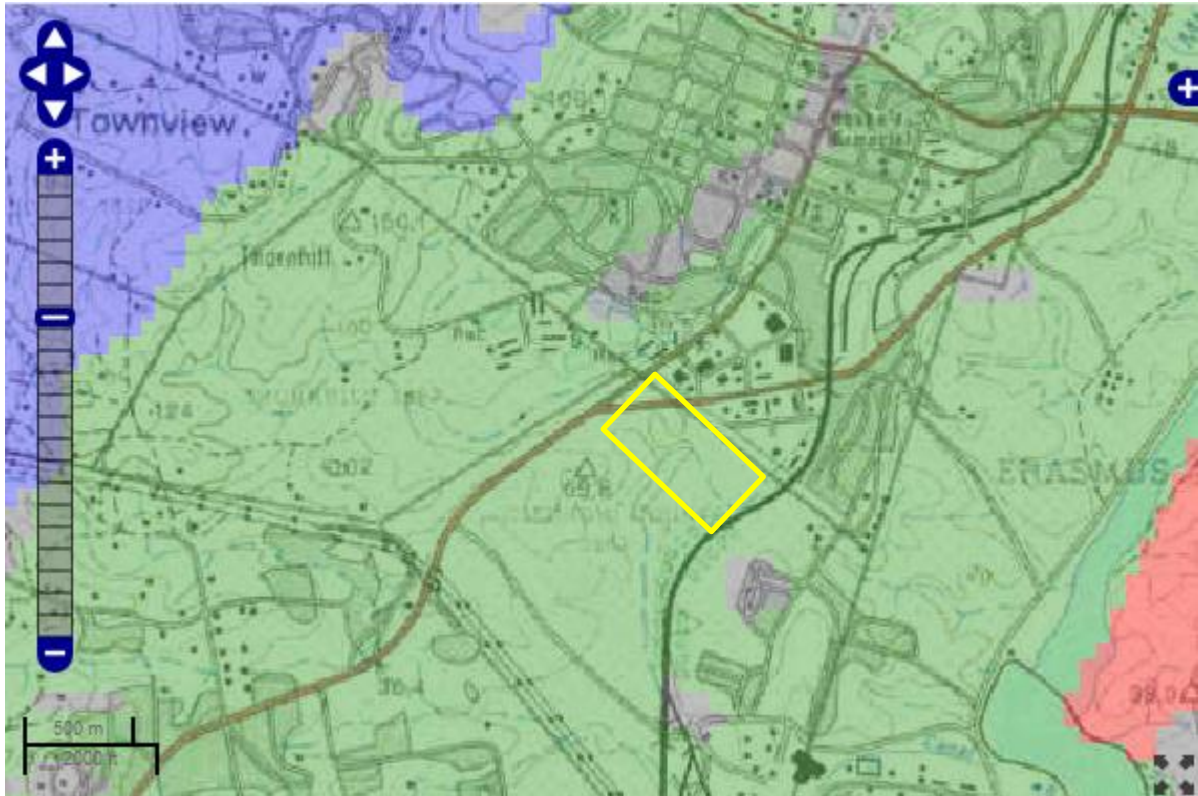


Figure 4: SAHRIS palaeosensitivity map for the site for the proposed Light Industrial development on Gledhow Farm Ptn 16 shown within the yellow outline. Background colours indicate the following degrees of sensitivity: red = very highly sensitive; orange/yellow = high; green = moderate; blue = low; grey = insignificant/zero.

The palaeontological sensitivity of the area under consideration is presented in Figure 3. The site is in the moderately fossiliferous Pietermaritzburg Formation (Ecca Group, Karoo Supergroup). The Pietermaritzburg Formation was deposited in shallow to deep water conditions and only in the ancient shoreline facies would there be a chance of finding trace fossils such as worm burrows.

It should be noted that the area has been cultivated for sugarcane for decades and no fossils would be present in the soils.

4. Impact assessment

An assessment of the potential impacts to possible palaeontological resources considers the criteria encapsulated in Table 3:

Table 3a: Criteria for assessing impacts

PART A: DEFINITION AND CRITERIA		
Criteria for ranking of the SEVERITY/NATURE of environmental impacts	H	Substantial deterioration (death, illness or injury). Recommended level will often be violated. Vigorous community action.
	M	Moderate/ measurable deterioration (discomfort). Recommended level will occasionally be violated. Widespread complaints.
	L	Minor deterioration (nuisance or minor deterioration). Change not measurable/ will remain in the current range. Recommended level will never be violated. Sporadic complaints.
	L+	Minor improvement. Change not measurable/ will remain in the current range. Recommended level will never be violated. Sporadic complaints.
	M+	Moderate improvement. Will be within or better than the recommended level. No observed reaction.
	H+	Substantial improvement. Will be within or better than the recommended level. Favourable publicity.
Criteria for ranking the DURATION of impacts	L	Quickly reversible. Less than the project life. Short term
	M	Reversible over time. Life of the project. Medium term
	H	Permanent. Beyond closure. Long term.
Criteria for ranking the SPATIAL SCALE of impacts	L	Localised - Within the site boundary.
	M	Fairly widespread – Beyond the site boundary. Local
	H	Widespread – Far beyond site boundary. Regional/ national
PROBABILITY (of exposure to impacts)	H	Definite/ Continuous
	M	Possible/ frequent
	L	Unlikely/ seldom

Table 3b: Impact Assessment

PART B: Assessment		
SEVERITY/NATURE	H	-
	M	-
	L	Deep water shales and alluvium do not preserve fossils; so far there are no records from the Pietermaritzburg Fm of trace fossils, plant or animal fossils in this site so it is very unlikely that fossils occur on the site. The impact would be negligible
	L+	-
	M+	-
	H+	-
DURATION	L	-
	M	-
	H	Where manifest, the impact will be permanent.

PART B: Assessment		
SPATIAL SCALE	L	Since the only possible fossils within the area would be trace fossils in the shales of the Pietermaritzburg Fm, the spatial scale will be localised within the site boundary.
	M	-
	H	-
PROBABILITY	H	-
	M	-
	L	It is extremely unlikely that any fossils would be found in the loose soils and sands that cover the area or in the deepwater shales. There might be fossils below the ground, therefore, a Fossil Chance Find Protocol should be added to the eventual EMPr.

Based on the nature of the project, surface activities may impact upon the fossil heritage if preserved in the development footprint. The geological structures suggest that the rocks are the right age to contain fossils but these would only be below ground or in rocky outcrops, not in the soil cover. Since there is a small chance that fossils from the Pietermaritzburg Formation may be disturbed a Fossil Chance Find Protocol has been added to this report. Taking account of the defined criteria, the potential impact to fossil heritage resources is extremely low.

5. Assumptions and uncertainties

Based on the geology of the area and the palaeontological record as we know it, it can be assumed that the formation and layout of the dolomites, sandstones, shales and sands are typical for the country and some might contain fossil plant material. The covering sands and soils of the Quaternary period would not preserve fossils. The area is highly disturbed and any intact fossils would be underground.

6. Recommendation

Based on experience and the lack of any previously recorded fossils from the area, it is extremely unlikely that any fossils would be preserved in the covering soils and sands of the Quaternary. There is a small chance that fossils may occur below ground in the shales of the early Permian Pietermaritzburg Formation so a Fossil Chance Find Protocol should be added to the EMPr. If fossils are found by the developer, contractor, environmental officer, or other responsible person once excavations for amenities, roads and foundations have commenced then they should be rescued and a palaeontologist called to assess and collect a representative sample. The impact on the palaeontological heritage would be low so, as far as the palaeontology is concerned, the project should be authorised.

7. References

Anderson, J.M., Anderson, H.M., 1985. Palaeoflora of Southern Africa: Prodrum of South African megafloras, Devonian to Lower Cretaceous. A.A. Balkema, Rotterdam. 423 pp.

Botha, G.A., 2018. Lithostratigraphy of the late Cenozoic Maputaland Group. South African Journal of Geology 121, 95-108.

Johnson, M.R., van Vuuren, C.J., Visser, J.N.J., Cole, D.I., Wickens, H.deV., Christie, A.D.M., Roberts, D.L., Brandl, G., 2006. Sedimentary rocks of the Karoo Supergroup. In: Johnson, M.R., Anhaeusser, C.R. and Thomas, R.J., (Eds). The Geology of South Africa. Geological Society of South Africa, Johannesburg / Council for Geoscience, Pretoria. Pp 461 – 499.

Plumstead, E.P., 1969. Three thousand million years of plant life in Africa. Geological Society of southern Africa, Annexure to Volume LXXII. 72pp + 25 plates.

8. Chance Find Protocol

Monitoring Programme for Palaeontology – to commence once the excavations begin.

1. The following procedure is only required if fossils are seen on the surface and when excavations commence.
2. When excavations begin the rocks and must be given a cursory inspection by the environmental officer or designated person. Any fossiliferous material (plants, insects, bone, coal) should be put aside in a suitably protected place. This way the project activities will not be interrupted.
3. Photographs of similar fossils must be provided to the developer to assist in recognizing the fossil plants, vertebrates, invertebrates or trace fossils in the shales and mudstones (for example see Figure 4). This information will be built into the EMP's training and awareness plan and procedures.
4. Photographs of the putative fossils can be sent to the palaeontologist for a preliminary assessment.
5. If there is any possible fossil material found by the developer/environmental officer then the qualified palaeontologist sub-contracted for this project, should visit the site to inspect the selected material and check the dumps where feasible.
6. Fossil plants or vertebrates that are considered to be of good quality or scientific interest by the palaeontologist must be removed, catalogued and housed in a suitable institution where they can be made available for further study. Before the fossils are removed from the site an AMAFA or SAHRA permit must be obtained. Annual reports must be submitted to Amafa and SAHRA as required by the relevant permits.
7. If no good fossil material is recovered then no site inspections by the palaeontologist will be necessary. A final report by the palaeontologist must be sent to AMAFA and SAHRA once the project has been completed and only if there are fossils.
8. If no fossils are found and the excavations have finished then no further monitoring is required.

9. Appendix A – Examples of fossils from the Pietermaritzburg Formation

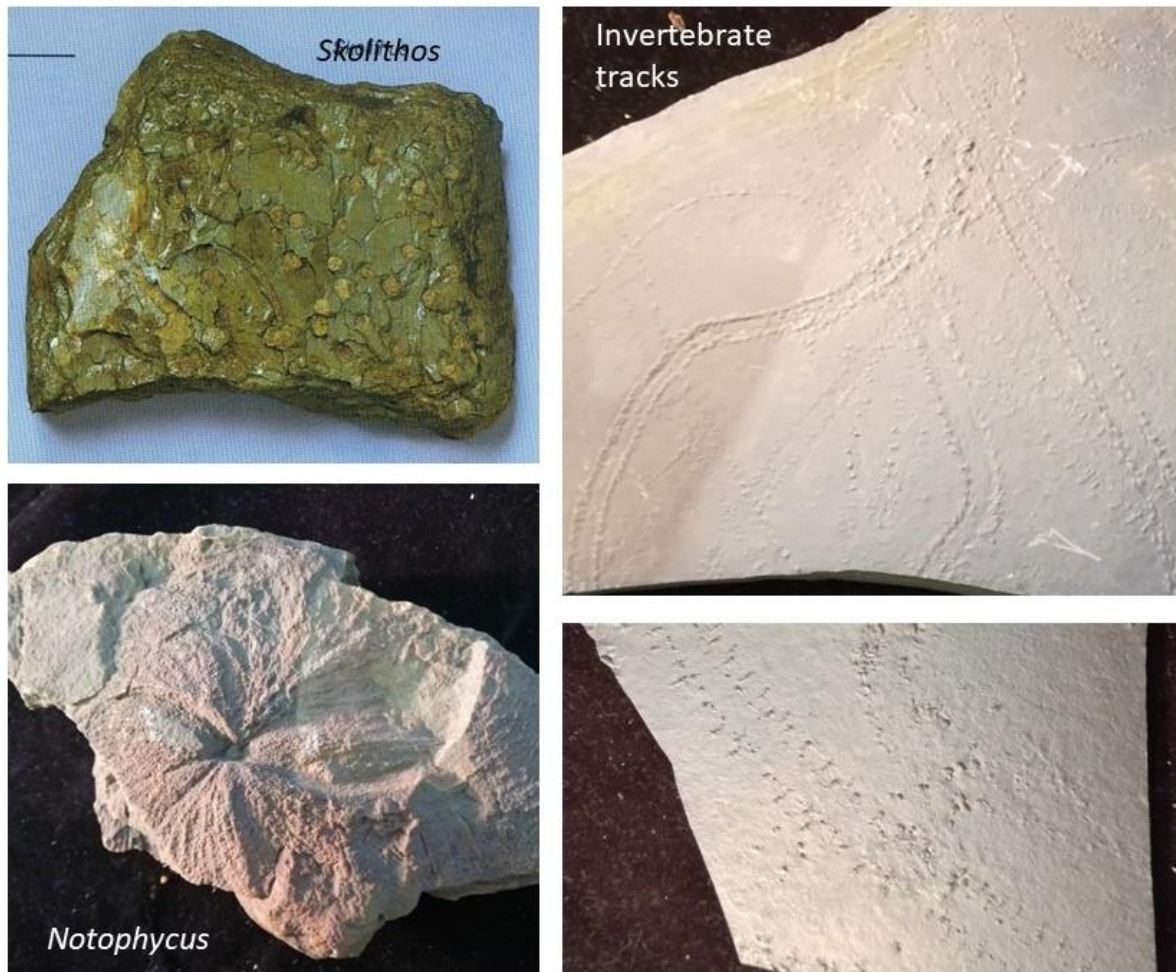


Figure 4: Photographs of trace fossils from the Pietermaritzburg Formation.

10. Appendix B – Details of specialist

Curriculum vitae (short) - Marion Bamford PhD **January 2023**

I) Personal details

Surname : **Bamford**
First names : **Marion Kathleen**
Present employment: Professor; Director of the Evolutionary Studies Institute.
Member Management Committee of the NRF/DST Centre of Excellence Palaeosciences, University of the Witwatersrand, Johannesburg, South Africa
Telephone : +27 11 717 6690
Fax : +27 11 717 6694
Cell : 082 555 6937
E-mail : marion.bamford@wits.ac.za ;
marionbamford12@gmail.com

ii) Academic qualifications

Tertiary Education: All at the University of the Witwatersrand:
1980-1982: BSc, majors in Botany and Microbiology. Graduated April 1983.
1983: BSc Honours, Botany and Palaeobotany. Graduated April 1984.
1984-1986: MSc in Palaeobotany. Graduated with Distinction, November 1986.
1986-1989: PhD in Palaeobotany. Graduated in June 1990.
NRF Rating: C-2 (1999-2004); B-3 (2005-2015); B-2 (2016-2020); B-1 (2021-2026)

iii) Professional qualifications

Wood Anatomy Training (overseas as nothing was available in South Africa):
1994 - Service d'Anatomie des Bois, Musée Royal de l'Afrique Centrale, Tervuren, Belgium, by Roger Dechamps
1997 - Université Pierre et Marie Curie, Paris, France, by Dr Jean-Claude Koeniguer
1997 - Université Claude Bernard, Lyon, France by Prof Georges Barale, Dr Jean-Pierre Gros, and Dr Marc Philippe

iv) Membership of professional bodies/associations

Palaeontological Society of Southern Africa
Royal Society of Southern Africa - Fellow: 2006 onwards
Academy of Sciences of South Africa - Member: Oct 2014 onwards
International Association of Wood Anatomists - First enrolled: January 1991
International Organization of Palaeobotany – 1993+
Botanical Society of South Africa
South African Committee on Stratigraphy – Biostratigraphy - 1997 - 2016
SASQUA (South African Society for Quaternary Research) – 1997+

PAGES - 2008 –onwards: South African representative
 ROCEEH / WAVE – 2008+
 INQUA – PALCOMM – 2011+onwards

vii) Supervision of Higher Degrees

All at Wits University

Degree	Graduated/completed	Current
Honours	13	0
Masters	13	3
PhD	13	6
Postdoctoral fellows	15	4

viii) Undergraduate teaching

Geology II – Palaeobotany GEOL2008 – average 65 students per year
 Biology III – Palaeobotany APES3029 – average 45 students per year
 Honours – Evolution of Terrestrial Ecosystems; African Plio-Pleistocene Palaeoecology;
 Micropalaeontology – average 12-20 students per year.

ix) Editing and reviewing

Editor: *Palaeontologia africana*: 2003 to 2013; 2014 – Assistant editor
 Guest Editor: *Quaternary International*: 2005 volume
 Member of Board of Review: *Review of Palaeobotany and Palynology*: 2010 –
 Associate Editor *Open Science UK*: 2021 -
 Review of manuscripts for ISI-listed journals: 30 local and international journals
 Reviewing of funding applications for NRF, PAST, NWO, SIDA, National Geographic,
 Leakey Foundation

x) Palaeontological Impact Assessments

Selected from the past five years only – list not complete:

- Mala Mala 2017 for Henwood
- Modimolle 2017 for Green Vision
- Klipoortjie and Finaalspan 2017 for Delta BEC
- Ledjadja borrow pits 2018 for Digby Wells
- Lungile poultry farm 2018 for CTS
- Olienhout Dam 2018 for JP Celliers
- Isondlo and Kwasobabili 2018 for GCS
- Kanakies Gypsum 2018 for Cabanga
- Nababeep Copper mine 2018
- Glencore-Mbali pipeline 2018 for Digby Wells
- Remhoogte PR 2019 for A&HAS
- Bospoort Agriculture 2019 for Kudzala
- Overlooked Quarry 2019 for Cabanga
- Richards Bay Powerline 2019 for NGT
- Eilandia dam 2019 for ACO
- Eastlands Residential 2019 for HCAC
- Fairview MR 2019 for Cabanga
- Graspan project 2019 for HCAC
- Lieliefontein N&D 2019 for EnviroPro

- Skeerpoort Farm Mast 2020 for HCAC
- Vulindlela Eco village 2020 for 1World
- KwaZamakhule Township 2020 for Kudzala
- Sunset Copper 2020 for Digby Wells
- McCarthy-Salene 2020 for Prescali
- VLNR Lodge 2020 for HCAC
- Madadeni mixed use 2020 for EnviroPro
- Frankfort-Windfield Eskom Powerline 2020 for 1World
- Beaufort West PV Facility 2021 for ACO Associates
- Copper Sunset MR 2021 for Digby Wells
- Sannaspos PV facility 2021 for CTS Heritage
- Smithfield-Rouxville-Zastron PL 2021 for TheroServe

xi) Research Output

Publications by M K Bamford up to January 2023 peer-reviewed journals or scholarly books: over 170 articles published; 5 submitted/in press; 10 book chapters.

Scopus h-index = 30; Google scholar h-index = 39; i10-index = 116

Conferences: numerous presentations at local and international conferences.