

**Palaeontological Impact Assessment for the  
proposed Grace Bible Church Campus,  
Hartebeespoort, Madibeng Local Municipality  
North West Province**

**Desktop Study (Phase 1)**

**For**

**TSEO SEO EO**

**08 September 2023**

**Prof Marion Bamford**

Palaeobotanist

P Bag 652, WITS 2050

Johannesburg, South Africa

[Marion.bamford@wits.ac.za](mailto:Marion.bamford@wits.ac.za)

## **Expertise of Specialist**

The Palaeontologist Consultant: Prof Marion Bamford  
Qualifications: PhD (Wits Univ, 1990); FRSSAf, mASSAf, PSSA  
Experience: 34 years research and lecturing in Palaeontology  
26 years PIA studies and over 350 projects completed

## **Declaration of Independence**

This report has been compiled by Professor Marion Bamford, of the University of the Witwatersrand, sub-contracted by Tseo Seo Eo Consulting, Marshaltown, South Africa. The views expressed in this report are entirely those of the author and no other interest was displayed during the decision making process for the Project.

Specialist: Prof Marion Bamford

Signature:

A handwritten signature in blue ink, appearing to read 'MKBamford', with a horizontal line underneath it.

## Executive Summary

A Palaeontological Impact Assessment was requested for the proposed Grace Bible Church Campus in Hartebeestpoort, Madibeng Local municipality, North West Province. The complex, comprising a church, bible college, dormitories, chalets, dining facilities, parking and a Macadamia working farm will be on Portion 152 (Remaining Extent) of the Farm Hartebeesfontein 445-JQ, Zandfonteinn 598-JQ and Umfula 939-JQ (Engen 1 Stop).

To comply with the regulations of the South African Heritage Resources Agency (SAHRA) in terms of Section 38(8) of the National Heritage Resources Act, 1999 (Act No. 25 of 1999) (NHRA), a desktop Palaeontological Impact Assessment (PIA) was completed for the proposed development.

The proposed site lies on the highly sensitive Magaliesberg Formation (Pretoria Group, Transvaal Supergroup) that might preserve trace fossils such as microbialites, although none has been recorded from the area. Nonetheless, a Fossil Chance Find Protocol should be added to the EMPr. Based on this information it is recommended that no further palaeontological impact assessment is required unless fossils are found by the contractor, environmental officer or other designated responsible person once excavations, drilling or mining activities have commenced. Since the impact will be low, as far as the palaeontology is concerned, the project should be authorised.

ASPECT	SCREENING TOOL SENSITIVITY	VERIFIED SENSITIVITY	OUTCOME STATEMENT/ PLAN OF STUDY	RELEVANT SECTION MOTIVATING VERIFICATION
Palaeontology	High	Low	Paleontological Impact Assessment	Section 7.2. SAHRA Requirements

## Table of Contents

Expertise of Specialist .....	1
Declaration of Independence .....	1
1. Background .....	4
2. Methods and Terms of Reference .....	7
3. Geology and Palaeontology .....	8
i. Project location and geological context .....	8
ii. Palaeontological context .....	10
4. Impact assessment .....	11
5. Assumptions and uncertainties .....	13
6. Recommendation .....	13
7. References .....	14
8. Chance Find Protocol .....	16
9. Appendix A – Examples of fossils .....	17
10. Appendix B – Details of specialist .....	18
Figures 1-2: Google Earth maps of the project area. ....	6
Figure 3: Project layout map .....	7
Figure 4: Geological map of the area around the project site .....	8
Figure 5: SAHRIS palaeosensitivity map for the site .....	11

# 1. Background

A Palaeontological Impact Assessment is required for the proposed church centre and limited chalets, the Grace Bible Church Campus, on Portion 152 (Remaining Extent) of the Farm Hartebeesfontein 445-JQ, Zandfonteinn 598-JQ and Umfula 939-JQ (Engen 1 Stop), located 3kms north of Hartebeespoort, Madibeng Local Municipality, North West Province (Figures 1-2).

The project includes the establishment of a church building with a residence for the presiding officer, bible college, dining area, dormitories and chalets, parking, roads and infrastructure. A macadamia nut working farm is planned for the remainder of the Zandfontein 598 property and a mountain walking trail (Figure 3).

A Palaeontological Impact Assessment was requested for the Grace Bible Church Hartebeesfontein Campus project. To comply with the regulations of the South African Heritage Resources Agency (SAHRA) in terms of Section 38(8) of the National Heritage Resources Act, 1999 (Act No. 25 of 1999) (NHRA), a desktop Palaeontological Impact Assessment (PIA) was completed for the proposed development and is reported herein.

**Table 1: National Environmental Management Act, 1998 (Act No. 107 of 1998) (NEMA) and Environmental Impact Assessment (EIA) Regulations, 2014 (as amended) - Requirements for Specialist Reports (Appendix 6).**

	<b>A specialist report prepared in terms of the Environmental Impact Regulations of 2017 must contain:</b>	<b>Relevant section in report</b>
ai	Details of the specialist who prepared the report,	Appendix B
aii	The expertise of that person to compile a specialist report including a curriculum vitae	Appendix B
b	A declaration that the person is independent in a form as may be specified by the competent authority	Page 1
c	An indication of the scope of, and the purpose for which, the report was prepared	Section 1
ci	An indication of the quality and age of the base data used for the specialist report: SAHRIS palaeosensitivity map accessed – date of this report	Yes
cii	A description of existing impacts on the site, cumulative impacts of the proposed development and levels of acceptable change	Section 5
d	The date and season of the site investigation and the relevance of the season to the outcome of the assessment	N/A
e	A description of the methodology adopted in preparing the report or carrying out the specialised process	Section 2
f	The specific identified sensitivity of the site related to the activity and its associated structures and infrastructure	Section 4

	<b>A specialist report prepared in terms of the Environmental Impact Regulations of 2017 must contain:</b>	<b>Relevant section in report</b>
g	An identification of any areas to be avoided, including buffers	N/A
h	A map superimposing the activity including the associated structures and infrastructure on the environmental sensitivities of the site including areas to be avoided, including buffers;	N/A
i	A description of any assumptions made and any uncertainties or gaps in knowledge;	Section 5
j	A description of the findings and potential implications of such findings on the impact of the proposed activity, including identified alternatives, on the environment	Section 4
k	Any mitigation measures for inclusion in the EMPr	Section 8, Appendix A
l	Any conditions for inclusion in the environmental authorisation	N/A
m	Any monitoring requirements for inclusion in the EMPr or environmental authorisation	Section 8, Appendix A
ni	A reasoned opinion as to whether the proposed activity or portions thereof should be authorised	Section 6
nii	If the opinion is that the proposed activity or portions thereof should be authorised, any avoidance, management and mitigation measures that should be included in the EMPr, and where applicable, the closure plan	Sections 6, 8
o	A description of any consultation process that was undertaken during the course of carrying out the study	N/A
p	A summary and copies of any comments that were received during any consultation process	N/A
q	Any other information requested by the competent authority.	N/A
2	Where a government notice gazetted by the Minister provides for any protocol or minimum information requirement to be applied to a specialist report, the requirements as indicated in such notice will apply.	N/A





**Figure 1: Google Earth map of the general area to show the relative landmarks. The Grace Bible Church Campus site is shown by the red polygon.**



**Figure 2: Google Earth Map of the proposed Grace Bible Church Hartbeesfontein Campus with the section shown by the red outline.**





**Figure 3: Proposed layout for the Grace Bible Church Hartebeesfontein Campus.**

## 2. Methods and Terms of Reference

The Terms of Reference (ToR) for this study were to undertake a PIA and provide feasible management measures to comply with the requirements of SAHRA.

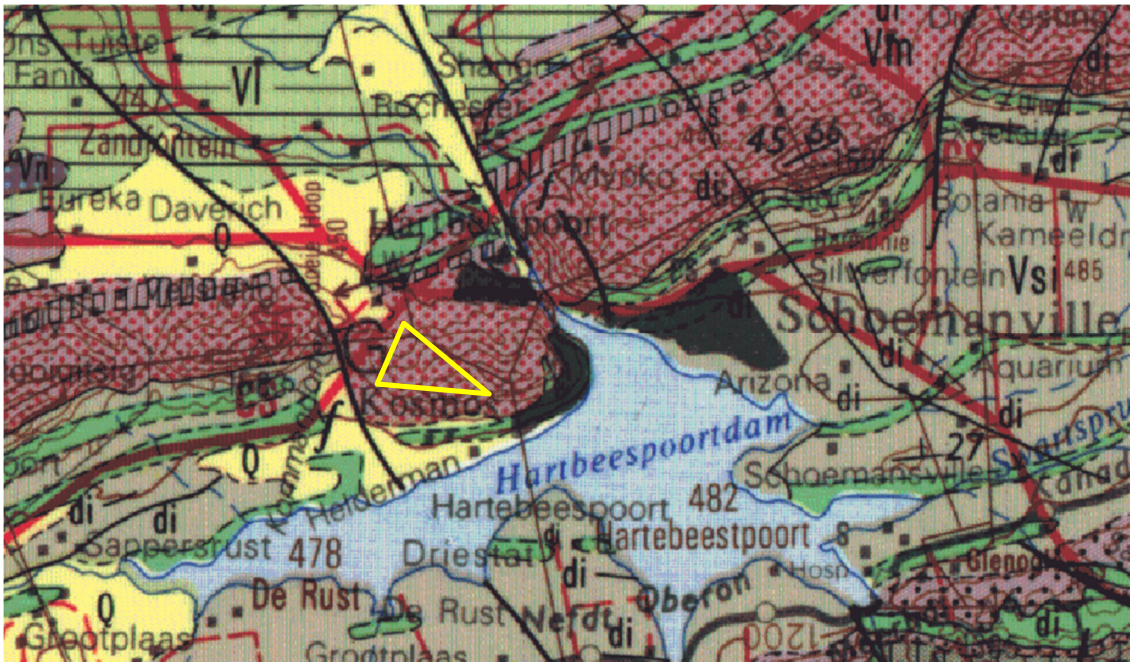
The methods employed to address the ToR included:

1. Consultation of geological maps, literature, palaeontological databases, published and unpublished records to determine the likelihood of fossils occurring in the affected areas. Sources include records housed at the Evolutionary Studies Institute at the University of the Witwatersrand and SAHRA databases; eg <https://sahris.sahra.org.za/map/palaeo>
2. Where necessary, site visits by a qualified palaeontologist to locate any fossils and assess their importance (*not applicable to this assessment*);
3. Where appropriate, collection of unique or rare fossils with the necessary permits for storage and curation at an appropriate facility (*not applicable to this assessment*); and
4. Determination of fossils' representivity or scientific importance to decide if the fossils can be destroyed or a representative sample collected (*not applicable to this assessment*).



### 3. Geology and Palaeontology

#### i. Project location and geological context



**Figure 4: Geological map of the area around the Hartbeespoort Dam with the Grace Bible Church Campus shown within the yellow polygon. Abbreviations of the rock types are explained in Table 2. Map enlarged from the Geological Survey 1: 250 000 map 2526 Rustenburg.**

Table 2: Explanation of symbols for the geological map and approximate ages (Eriksson et al., 2006. Johnson et al., 2006; Zeh et al., 2020). SG = Supergroup; Fm = Formation; Ma = million years; grey shading = formations impacted by the project.

Symbol	Group/Formation	Lithology	Approximate Age
Q	Quaternary	Alluvium, sand, calcrete	Quaternary, ca 1.0 Ma to present
	Budin Fm, Kalahari Group	Red and brown clays with scattered pebbles	Quaternary Ca 1.2 – 1.1 Ma
Vdi	Diabase	Intrusive volcanic dykes and sills	Post Transvaal SG
Vm	Magaliesberg Fm, Pretoria Group, Transvaal SG	Quartzite, minor hornfels	Palaeoproterozoic <2080 Ma
Vsi	Silverton Fm, Pretoria Group, Transvaal SG	Shale, carbonaceous in places, hornfels, chert	Ca 2202 Ma
Vdq	Daspoort Fm, Pretoria Group, Transvaal SG	Quartzite	<2240 Ma
Vha	Hekpoort Fm, Pretoria Group, Transvaal SG	Volcanic rocks	Ca 2224 Ma

Symbol	Group/Formation	Lithology	Approximate Age
Vt	Timeball Hill Fm Pretoria Group, Transvaal SG	Shale, siltstone, conglomerate in places; dotted = Quartzite	Ca 2316 – 2266 Ma

The project lies in the Transvaal Basin of the Transvaal Supergroup where some of the formations are exposed (Figure 4). To the north are non-fossiliferous volcanic and metamorphosed rock of the Rustenburg Layered Suite. Unconformably overlying these ancient rocks are much younger Quaternary sands and alluvium, especially in river valleys and depressions.

The Transvaal Supergroup comprises one of world's earliest carbonate platform successions (Beukes, 1987; Eriksson et al., 2006; Zeh et al., 2020). In some areas there are well preserved stromatolites that are evidence of the photosynthetic activity of blue green bacteria and green algae. These microbes formed colonies in warm, shallow seas.

In the Transvaal Basin the Transvaal Supergroup is divided into two Groups, the lower Chuniespoort Group and the upper Pretoria Group (with ten formations; Eriksson et al., 2006). The Chuniespoort Group is divided into the basal Malmani Subgroup that comprises dolomites and limestones and is divided into five formations based on chert content, stromatolitic morphology, intercalated shales and erosion surfaces. The top of the Chuniespoort Group has the Penge Formation and the Deutschland Formation.

Making up the lower Pretoria Group are the Timeball Hill Formation and the Boshhoek Formation. The Hekpoort, Dwaalheuwel, Strubenkop and Daspoort Formations form a sequence as the middle part of the Pretoria Group, Transvaal Supergroup, and represent rocks that are over 2060 million years old. The Hekpoort Formation is a massive lava deposit and is overlain by the Dwaalheuwel conglomerates, siltstone and sandstone (not present here). A hiatus separates the Strubenkop Formation slates and shales from the overlying quartzites of the Daspoort Formation. Upper Pretoria Group formations are the Silverton, **Magaliesberg**, Vermont, Lakenvalei, Nederhorst, Steenkampsberg and Houtenbek Formations.

The Transvaal sequence has been interpreted as three major cycles of basin infill and tectonic activity with the first deep basin sediments forming the Chuniespoort Group, the second cycle deposited the lower Pretoria Group, and the sediments in this area are from the interim lowstand that preceded the third cycle. These sediments were deposited in shallow lacustrine, alluvial fan and braided stream environments (Eriksson et al., 2012).

Transvaal Supergroup rocks in the Transvaal Basin were intruded by the Bushveld Complex at around 2060 million year ago (Eriksson et al. 2006; 2055 Ma in Zeh et al., 2020), with the Magaliesberg Formation of the Pretoria Group forming the floor rocks in most areas (Eriksson et al., 2006). In other areas of the basin the lavas and other subordinate sedimentary rocks of the Rooiberg Group form the floor instead (ibid).

## ii. Palaeontological context

The palaeontological sensitivity of the area under consideration is presented in Figure 5. The site for development is in the Magaliesberg Formation (orange) that is highly sensitive.

Bosch and Eriksson (2008) described crack-like features, vermiform structures and circular imprints resembling concretions or, possibly oncolites, that occur on sand sheet surfaces within the uppermost beds of the **Magaliesberg Formation**. They indicated two localities, one north of Pretoria, on the farm Baviaanspoort 330 JR and the other on the farm Rietvlei 518 JR, east of Pretoria. Leeuwpoort is northeast of Pretoria. The presence of such microbial mat-like features are found in epeiric marine tidally dominated coastline. The rhythmic alternation of water levels inherent in such settings can explain desiccation of microbial mats growing on the sandy substrates formed within the palaeoenvironment. In addition, the shifting loci of deposition were probably also related to braided fluvial inputs, through the medium of braid deltas (Bosch and Eriksson, 2008).

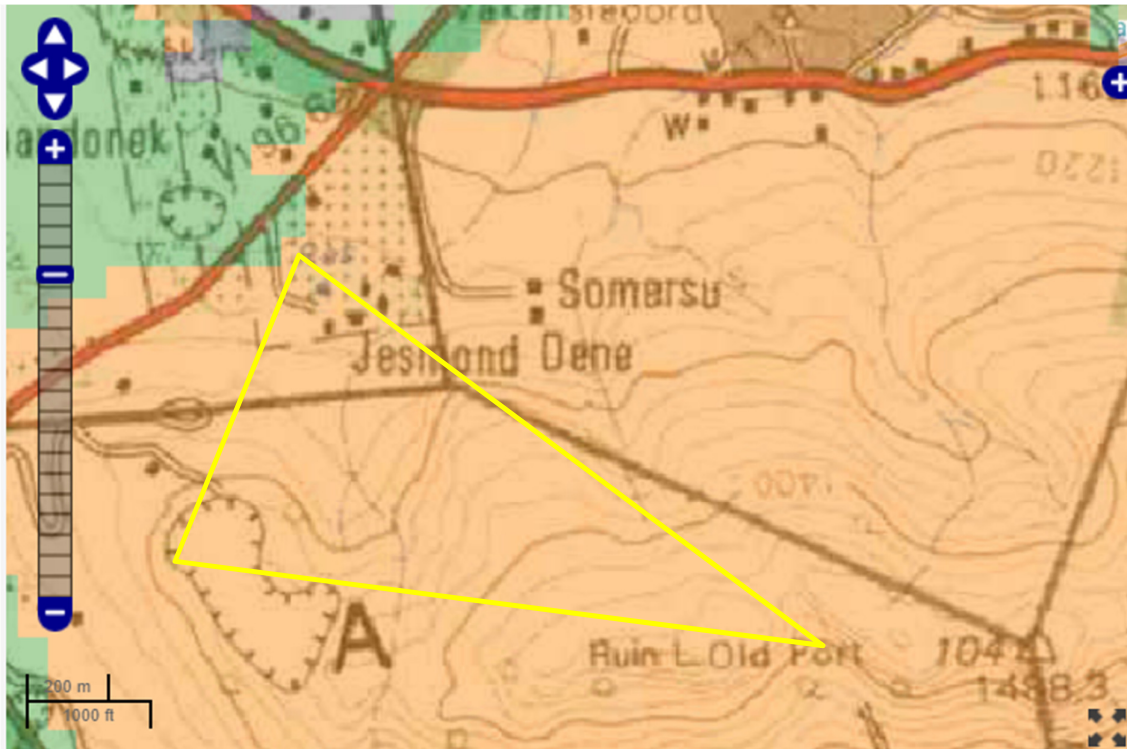
**Stromatolites** are the trace fossils that were formed by colonies of green algae and blue-green algae (Cyanobacteria) that grew in warm, shallow marine settings. These algae were responsible for releasing oxygen via the photosynthetic process where atmospheric carbon dioxide and water, using energy from the sun, are converted into carbon chains and compounds that are the building blocks of all living organisms. The released carbon dioxide initially was taken up by the abundant reducing minerals to form oxides, e.g. iron oxide. Eventually free oxygen was released into the atmosphere and some was converted into ozone by the bombardment of cosmic rays. The ozone is critical for the filtering out of harmful ultraviolet rays.

Stromatolites are the layers upon layers of inorganic materials that were deposited during photosynthesis, namely calcium carbonate, magnesium carbonate, calcium sulphate and magnesium sulphate. These layers can be in the form of flat layers, domes or columns depending on the environment where they grew (Beukes, 1987). Some environments did not form stromatolites, just layers of limestone that later was converted to dolomite. The algae that formed the stromatolites are very rarely preserved, and they are microscopic so they can only be seen from thin sections studies under a petrographic microscope.

**Microbialites** (sensu Burne and Moore, 1987) are organo-sedimentary deposits formed from interaction between benthic microbial communities (BMCs) and detrital or chemical sediments. In addition, microbialites contrast with other biological sediments in that they are generally not composed of skeletal remains. Archean carbonates mostly consist of stromatolites. These platforms could have been the site of early O<sub>2</sub> production on our planet. Stromatolites are the laminated, organo-sedimentary, non-skeletal products of microbial communities, which may have included cyanobacteria, the first photosynthetic organisms to produce oxygen. Another type of trace fossil has been termed Microbially-induced sedimentary structures (MISS sensu Noffke et al., 2001) or simply 'fossil mats' (sensu Tice et al., 2011). These include swirls, rip-ups, crinkled surfaces and wrinkles that were formed by the mucus extruded by littoral algae or microbes and bound together sand particles. Davies et al. (2016) caution against the

assumption that all such structures are microbially induced unless there is additional evidence for microbes in the palaeoenvironment.

Nonetheless, stromatolites and microbialites are accepted as trace fossils of algal colonies. MISS could be microbially or abiotically formed. The oldest stromatolites have been recorded from the Barberton Supergroup that was deposited between 3.55 to ca. 3.20 Ga, and stromatolites still form today in warm, shallow seas (Homan, 2019).



**Figure 5: SAHRIS palaeosensitivity map for the site for the proposed Grace Bible Church Campus on Portion 152 (Remaining Extent) of the Farms Hartebeesfontein 445-JQ, Zandfontein 598-JQ and Umfula 939-JQ Zandfontein shown within the yellow rectangle. Background colours indicate the following degrees of sensitivity: red = very highly sensitive; orange/yellow = high; green = moderate; blue = low; grey = insignificant/zero.**

#### 4. Impact assessment

An assessment of the potential impacts to possible palaeontological resources considers the criteria encapsulated in Table 3:

**Table 3a: Criteria for assessing impacts**

<b>PART A: DEFINITION AND CRITERIA</b>		
<b>Criteria for ranking of the SEVERITY/NATURE of environmental impacts</b>	<b>H</b>	Substantial deterioration (death, illness or injury). Recommended level will often be violated. Vigorous community action.
	<b>M</b>	Moderate/ measurable deterioration (discomfort). Recommended level will occasionally be violated. Widespread complaints.
	<b>L</b>	Minor deterioration (nuisance or minor deterioration). Change not measurable/ will remain in the current range. Recommended level will never be violated. Sporadic complaints.
	<b>L+</b>	Minor improvement. Change not measurable/ will remain in the current range. Recommended level will never be violated. Sporadic complaints.
	<b>M+</b>	Moderate improvement. Will be within or better than the recommended level. No observed reaction.
	<b>H+</b>	Substantial improvement. Will be within or better than the recommended level. Favourable publicity.
<b>Criteria for ranking the DURATION of impacts</b>	<b>L</b>	Quickly reversible. Less than the project life. Short term
	<b>M</b>	Reversible over time. Life of the project. Medium term
	<b>H</b>	Permanent. Beyond closure. Long term.
<b>Criteria for ranking the SPATIAL SCALE of impacts</b>	<b>L</b>	Localised - Within the site boundary.
	<b>M</b>	Fairly widespread – Beyond the site boundary. Local
	<b>H</b>	Widespread – Far beyond site boundary. Regional/ national
<b>PROBABILITY (of exposure to impacts)</b>	<b>H</b>	Definite/ Continuous
	<b>M</b>	Possible/ frequent
	<b>L</b>	Unlikely/ seldom

**Table 3b: Impact Assessment**

<b>PART B: Assessment</b>		
<b>SEVERITY/NATURE</b>	<b>H</b>	-
	<b>M</b>	-
	<b>L</b>	Soils do not preserve fossils; so far there are no records from the Magaliesberg Fm of trace fossils, plant or animal fossils in this region so it is very unlikely that fossils occur on the site. The impact would be negligible
	<b>L+</b>	-
	<b>M+</b>	-
	<b>H+</b>	-
	<b>DURATION</b>	<b>L</b>
<b>M</b>		-
<b>H</b>		Where manifest, the impact will be permanent.



<b>PART B: Assessment</b>		
<b>SPATIAL SCALE</b>	<b>L</b>	Since the only possible fossils within the area would be trace fossils in the quartzites, the spatial scale will be localised within the site boundary.
	<b>M</b>	-
	<b>H</b>	-
<b>PROBABILITY</b>	<b>H</b>	-
	<b>M</b>	-
	<b>L</b>	It is extremely unlikely that any fossils would be found in the loose soils and sands that cover the area or in the quartzites of the Magaliesberg Fm. Nonetheless, a Fossil Chance Find Protocol should be added to the eventual EMPr.

Based on the nature of the project, surface activities may impact upon the fossil heritage if preserved in the development footprint. The geological structures suggest that the rocks are either much too old to contain body fossils or the wrong type. Furthermore, the material to be excavated is soil and this does not preserve fossils. Since there is an extremely small chance that trace fossils from the Magaliesberg Formation may be disturbed a Fossil Chance Find Protocol has been added to this report. Taking account of the defined criteria, the potential impact to fossil heritage resources is extremely low.

## 5. Assumptions and uncertainties

Based on the geology of the area and the palaeontological record as we know it, it can be assumed that the formation and layout of the dolomites, sandstones, shales and sands are typical for the country and only some contain trace fossils such as stromatolites or microbialites. The soils and sands of the Quaternary period would not preserve fossils.

## 6. Recommendation

Based on experience and the lack of any previously recorded fossils from the area, it is extremely unlikely that any fossils would be preserved in the overlying soils and sands of the Quaternary. There is a very small chance that trace fossils may occur in the quartzites of the Magaliesberg Formation so a Fossil Chance Find Protocol should be added to the EMPr. If fossils are found by the environmental officer, or other responsible person once excavations for foundations, infrastructure and amenities have commenced then they should be rescued and a palaeontologist called to assess and collect a representative sample. The impact on the palaeontological heritage would be low, so as far as the palaeontology is concerned, the project should be authorised.

ASPECT	SCREENING TOOL SENSITIVITY	VERIFIED SENSITIVITY	OUTCOME STATEMENT/ PLAN OF STUDY	RELEVANT SECTION MOTIVATING VERIFICATION
Palaeontology	High	Low	Paleontological Impact Assessment	Section 7.2. SAHRA Requirements

## 7. References

Beukes, N.J., 1987. Facies relations, depositional environments and diagenesis in a major early Proterozoic stromatolitic carbonate platform to basinal sequence, Campbellrand Subgroup, Transvaal Supergroup, southern Africa. *Sedimentary Geology* 54, 1-46.

Beukes, N.J., 1980. Stratigrafie en lithofacies van die Campbellrand-Subgroep van die Proterofitiese Ghaap-Groep, Noordkaapland. *Transactions of the Geological Society of South Africa* 83, 141-170.

Bosch, P., Eriksson, P., 2008. A note on two occurrences of inferred microbial mat features preserved in the c. 2.1 Ga Magaliesberg Formation (Pretoria Group, Transvaal Supergroup) sandstones, near Pretoria, South Africa. *South African Journal of Geology* 111, 251-262.

Button, A., 1976. Iron formation as an end member in carbonate sedimentary cycles in the Transvaal Supergroup, South Africa. *Economic Geology* 71, 193-201.

Burne, R.V., Moore, L.S., 1987. Microbialites; organosedimentary deposits of benthic microbial communities. *Palaios* 2(3), 241-254.

Coetzee, L.L., Beukes, N.J., Gutzmer, J., Kakegawa, T., 2006. Links of organic carbon cycling and burial to depositional depth gradients and establishment of a snowball Earth at 2.3 Ga. Evidence from the Timeball Hill Formation, Transvaal Supergroup, South Africa. *South African Journal of Geology* 109, 109-122.

Davies, N.S., Liu, A.G., Gibling, M.R., Miller, R.F., 2016. Resolving MISS conceptions and misconceptions: A geological approach to sedimentary surface textures generated by microbial and abiotic processes *Earth-Science Reviews* 154, 210-246.

Eriksson, P.G., Altermann, W., 1998. Eriksson, An overview of the geology of the Transvaal Supergroup dolomites (South Africa). *Environmental Geology* 36, 178-188.

Eriksson, P.G., Altermann, W., Hartzler, F.J., 2006. The Transvaal Supergroup and its precursors. In: Johnson, M.R., Anhaeusser, C.R. and Thomas, R.J., (Eds). *The Geology of*

South Africa. Geological Society of South Africa, Johannesburg / Council for Geoscience, Pretoria. pp 237-260.

Eriksson, P.G., Bartman, R., Catuneanu, O., Mazumder, R., Lenhardt, N., 2012. A case study of microbial mats-related features in coastal epeiric sandstones from the Palaeoproterozoic Pretoria Group, Transvaal Supergroup, Kaapvaal craton, South Africa; the effect of preservation (reflecting sequence stratigraphic models) on the relationship between mat features and inferred palaeoenvironment. *Sedimentary Geology* 263, 67-75.

Noffke, N., Gerdes, G., Klenke, T. and Krumbein, W.E. (2001). Microbially induced sedimentary structures – a new category within the classification of primary sedimentary structures. *Journal of Sedimentary Research*, A71, 649-656.

Parizot, M., Eriksson, P.G., Aifa, T., Sarkar, S., Banerjee, S., Catuneanu, O., Altermann, W., Bumby, A.J., Bordy, E.M., Rooy, J.L. and Boshoff, A.J. (2005). Suspected microbial mat-related crack-like sedimentary structures in the Palaeoproterozoic Magaliesberg Formation sandstones, South Africa. *Precambrian Research*, 138, 274-296.

Plumstead, E.P., 1969. Three thousand million years of plant life in Africa. Geological Society of southern Africa, Annexure to Volume LXXII. 72pp + 25 plates.

Rasmussen, B., Fletcher, I.R., Muhling, J.R. 2013. Dating deposition and low-grade metamorphism by in situ U/Pb geochronology of titanite in the Paleoproterozoic Timeball Hill Formation, southern Africa. *Chemical Geology* 351, 29-39.

Schröder, S., Beukes, N.J., Armstrong, R.A., 2016. Detrital zircon constraints on the tectonostratigraphy of the Paleoproterozoic Pretoria Group, South Africa. *Precambrian Research* 278, 362 – 393.

Sumner, D.Y., Beukes, N.J., 2006. Sequence stratigraphic development of the Neoproterozoic Transvaal carbonate platform, Kaapvaal Craton, South Africa. *South African Journal of Geology* 109, 11–22.

Tice, M.M., Thornton, D.C.O., Pope, M.C., Olszewski, T.D., Gong, J., 2011. Archean microbial mat communities. *Annual Review of Earth and Planetary Sciences* 39, 297–319.

Truswell, J.F., Eriksson, K.A., 1973. Stromatolitic associations and their palaeoenvironmental significance: a reappraisal of a lower Proterozoic locality from the northern Cape Province, South Africa. *Sedimentary Geology* 10, 1–23.

Zeh, A., Wilson, A.H., Gerdes, A., 2020. Zircon U-Pb-Hf isotope systematics of Transvaal Supergroup – Constraints for the geodynamic evolution of the Kaapvaal Craton and its hinterland between 2.65 and 2.06 Ga. *Precambrian Research* 345, 105760.  
<https://doi.org/10.1016/j.precamres.2020.105760>

## 8. Chance Find Protocol

### **Monitoring Programme for Palaeontology – to commence once the excavations / drilling activities begin.**

1. The following procedure is only required if fossils are seen on the surface and when drilling/excavations commence.
2. When excavations begin the rocks must be given a cursory inspection by the environmental officer or designated person. Any fossiliferous material (trace fossils, plants, insects, bone or coal) should be put aside in a suitably protected place. This way the project activities will not be interrupted.
3. Photographs of similar fossils must be provided to the developer to assist in recognizing the trace fossils such as stromatolites or microbially features (trails, curls, rip-ups, mudcracks) trace fossils in the dolomites, limestones, shales and mudstones (for example see Figures 6-7). This information will be built into the EMP's training and awareness plan and procedures.
4. Photographs of the putative fossils can be sent to the palaeontologist for a preliminary assessment.
5. If there is any possible fossil material found by the developer/environmental officer then the qualified palaeontologist sub-contracted for this project, should visit the site to inspect the selected material and check the dumps where feasible.
6. Fossil plants or vertebrates that are considered to be of good quality or scientific interest by the palaeontologist must be removed, catalogued and housed in a suitable institution where they can be made available for further study. Before the fossils are removed from the site a SAHRA permit must be obtained. Annual reports must be submitted to SAHRA as required by the relevant permits.
7. If no good fossil material is recovered then no site inspections by the palaeontologist will be necessary. A final report by the palaeontologist must be sent to SAHRA once the project has been completed and only if there are fossils.
8. If no fossils are found and the excavations have finished then no further monitoring is required.

## Appendix A – Examples of fossils from the Transvaal Supergroup



Weathering of dolomite



Small domal stromatolites



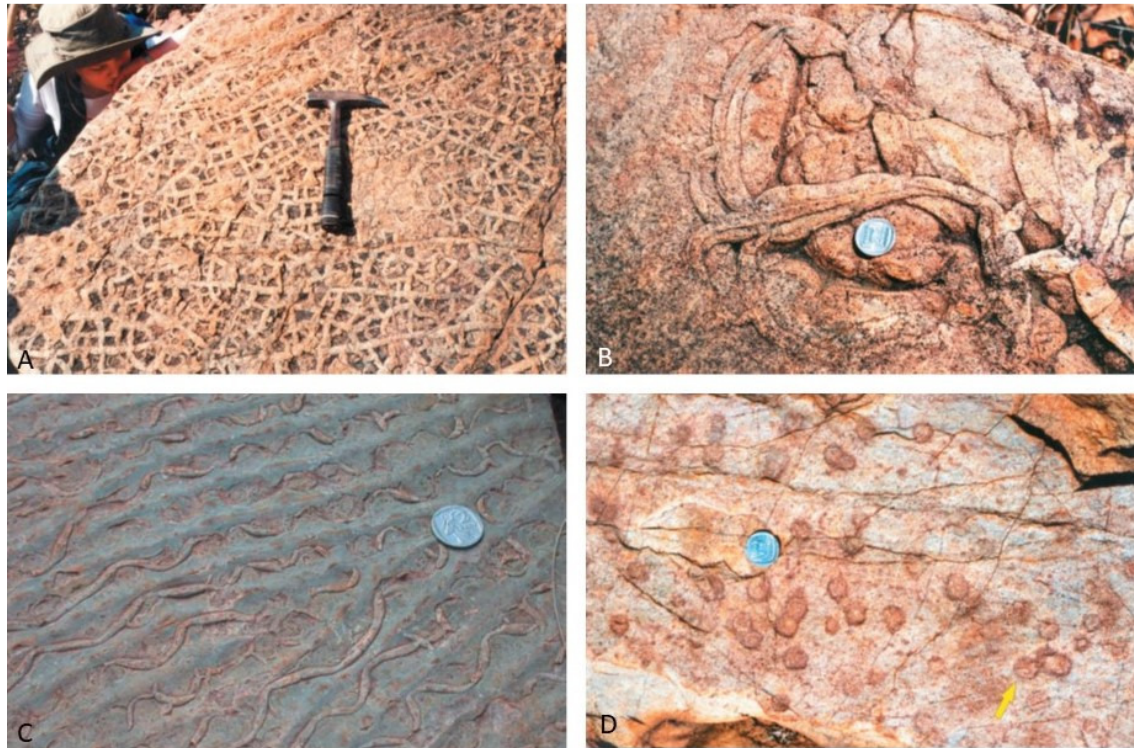
Side view of a stromatolite



Surface view of domal stromatolites

**Figure 6: Photographs from the Malmani Subgroup of types of stromatolites in dolomite.**





Magaliesberg Fm trace fossils, near Pretoria (all from Bosch & Eriksson, 2008): A – cracks, B – sinuous structure, C – *Manchuriphyucus*, D – circular structures. R1 coin for scale.

**Figure 7: Photographs of microbial features from the Magaliesberg Formation (in Bosch and Eriksson, 2008).**

## 9. Appendix B – Details of specialist

### **Curriculum vitae (short) - Marion Bamford PhD July 2023**

Present employment: Professor; Director of the Evolutionary Studies Institute.  
Member Management Committee of the NRF/DSI Centre of Excellence Palaeosciences, University of the Witwatersrand, Johannesburg, South Africa

Telephone : +27 11 717 6690  
Cell : 082 555 6937  
E-mail : [marion.bamford@wits.ac.za](mailto:marion.bamford@wits.ac.za) ;  
[marionbamford12@gmail.com](mailto:marionbamford12@gmail.com)

#### ii) **Academic qualifications**

Tertiary Education: All at the University of the Witwatersrand:  
1980-1982: BSc, majors in Botany and Microbiology. Graduated April 1983.  
1983: BSc Honours, Botany and Palaeobotany. Graduated April 1984.

1984-1986: MSc in Palaeobotany. Graduated with Distinction, November 1986.  
 1986-1989: PhD in Palaeobotany. Graduated in June 1990.

**iii) Professional qualifications**

*Wood Anatomy Training (overseas as nothing was available in South Africa):*

1994 - Service d'Anatomie des Bois, Musée Royal de l'Afrique Centrale, Tervuren, Belgium, by Roger Dechamps

1997 - Université Pierre et Marie Curie, Paris, France, by Dr Jean-Claude Koeniguer

1997 - Université Claude Bernard, Lyon, France by Prof Georges Barale, Dr Jean-Pierre Gros, and Dr Marc Philippe

**iv) Membership of professional bodies/associations**

Palaeontological Society of Southern Africa

Royal Society of Southern Africa - Fellow: 2006 onwards

Academy of Sciences of South Africa - Member: Oct 2014 onwards

International Association of Wood Anatomists - First enrolled: January 1991

International Organization of Palaeobotany – 1993+

Botanical Society of South Africa

South African Committee on Stratigraphy – Biostratigraphy - 1997 - 2016

SASQUA (South African Society for Quaternary Research) – 1997+

PAGES - 2008 –onwards: South African representative

ROCEEH / WAVE – 2008+

INQUA – PALCOMM – 2011+onwards

**v) Supervision of Higher Degrees**

All at Wits University

Degree	Graduated/completed	Current
Honours	13	0
Masters	14	3
PhD	14	6
Postdoctoral fellows	14	4

**vi) Undergraduate teaching**

Geology II – Palaeobotany GEOL2008 – average 65 students per year

Biology III – Palaeobotany APES3029 – average 25 students per year

Honours – Evolution of Terrestrial Ecosystems; African Plio-Pleistocene Palaeoecology;

Micropalaeontology – average 12 - 20 students per year.

**vii) Editing and reviewing**

Editor: Palaeontologia africana: 2003 to 2013; 2014 – Assistant editor

Guest Editor: Quaternary International: 2005 volume

Member of Board of Review: Review of Palaeobotany and Palynology: 2010 –

Associate Editor: Cretaceous Research: 2018-2020

Associate Editor: Royal Society Open: 2021 -

Review of manuscripts for ISI-listed journals: 30 local and international journals

**viii) Palaeontological Impact Assessments**

25 years' experience in PIA site and desktop projects

- Selected from recent projects only – list not complete:
- Skeerpoort Farm Mast 2020 for HCAC
- Vulindlela Eco village 2020 for 1World
- KwaZamakhule Township 2020 for Kudzala
- Sunset Copper 2020 for Digby Wells
- McCarthy-Salene 2020 for Prescali
- VLNR Lodge 2020 for HCAC
- Madadeni mixed use 2020 for Enviropro
- Frankfort-Windfield Eskom Powerline 2020 for 1World
- Beaufort West PV Facility 2021 for ACO Associates
- Copper Sunset MR 2021 for Digby Wells
- Sannaspos PV facility 2021 for CTS Heritage
- Smithfield-Rouxville-Zastron PL 2021 for TheroServe
- Glosam Mine 2022 for AHSA
- Wolf-Skilpad-Grassridge OHPL 2022 for Zutari
- Iziduli and Msenge WEFs 2022 for CTS Heritage
- Hendrina North and South WEFs & SEFs 2022 for Cabanga
- Dealesville-Springhaas SEFs 2022 for GIBB Environmental
- Vhuvhili and Mukondeleli SEFs 2022 for CSIR
- Chemwes & Stilfontein SEFs 2022 for CTS Heritage
- Equestria Exts housing 2022 for Beyond Heritage
- Zeerust Salene boreholes 2022 for Prescali
- Tsakane Sewer upgrade 2022 for Tsimba
- Transnet MPP inland and coastal 2022 for ENVASS
- Ruighoek PRA 2022 for SLR Consulting (Africa)
- Namli MRA Steinkopf 2022 for Beyond Heritage

ix) **Research Output**

Publications by M K Bamford up to July 2023 peer-reviewed journals or scholarly books: over 170 articles published; 5 submitted/in press; 14 book chapters.

Scopus h-index = 31; Google Scholar h-index = 39; -i10-index = 120 based on 7068 citations.

Conferences: numerous presentations at local and international conferences.