

Palaeontological Impact Assessment for the proposed Paradys Solar Energy Cluster, Renoval, Free State Province

Desktop Study (Phase 1)

For

CTS Heritage (Pty) Ltd

02 August 2023

Prof Marion Bamford

Palaeobotanist

P Bag 652, WITS 2050

Johannesburg, South Africa

Marion.bamford@wits.ac.za

Expertise of Specialist

The Palaeontologist Consultant: Prof Marion Bamford
Qualifications: PhD (Wits Univ, 1990); FRSSAf, mASSAf, PSSA
Experience: 34 years research and lecturing in Palaeontology
26 years PIA studies and over 350 projects completed

Declaration of Independence

This report has been compiled by Professor Marion Bamford, of the University of the Witwatersrand, sub-contracted by CTS Heritage, Simonstown, South Africa. The views expressed in this report are entirely those of the author and no other interest was displayed during the decision making process for the Project.

Specialist: Prof Marion Bamford

A handwritten signature in blue ink, appearing to read 'M Bamford', with a horizontal line underneath.

Signature:

Executive Summary

A Palaeontological Impact Assessment was requested for the proposed Paradys Photovoltaic Solar Energy Cluster on Farms Vlakfontein 15, Smaldeen 157, Biesiefontein 173, Zaaiplaats 190, Kleinfontein 369 and Uitval 457, south of Renoval and southeast of Orkney, Free State Province. The facility will produce up to 130 MW and have a grid connection to the existing Eskom Mercury substation.

To comply with the regulations of the South African Heritage Resources Agency (SAHRA) in terms of Section 38(8) of the National Heritage Resources Act, 1999 (Act No. 25 of 1999) (NHRA), a desktop Palaeontological Impact Assessment (PIA) was completed for the proposed development.

The proposed site lies on the Quaternary sands (underlain by the Vryheid Formation) and on the non-fossiliferous Hekpoort Formation. Nonetheless, a Fossil Chance Find Protocol should be added to the EMP. Based on this information it is recommended that no further palaeontological impact assessment is required unless fossils are found by the contractor, environmental officer or other designated responsible person once excavations, drilling or mining activities have commenced. Since the impact will be low, as far as the palaeontology is concerned, the project should be authorised.

ASPECT	SCREENING TOOL SENSITIVITY	VERIFIED SENSITIVITY	OUTCOME STATEMENT/ PLAN OF STUDY	RELEVANT SECTION MOTIVATING VERIFICATION
Palaeontology	Very High to moderate	Low to very low	Paleontological Impact Assessment	Section 7.2. SAHRA Requirements

Table of Contents

Expertise of Specialist	1
Declaration of Independence	1
1. Background	4
2. Methods and Terms of Reference	8
3. Geology and Palaeontology	9
i. Project location and geological context	9
ii. Palaeontological context	12
4. Impact assessment	13
5. Assumptions and uncertainties	15
6. Recommendation	15
7. References	15
8. Chance Find Protocol	17
9. Appendix A – Examples of fossils	18
10. Appendix B – Details of specialist	19
Figure 1: Google Earth map of the general area to show the relative land marks.	7
Figure 2: Google Earth Map of the proposed development	8
Figure 3: Geological map of the area around the project site.....	9
Figure 4: SAHRIS palaeosensitivity map for the site	12

1. Background

This report is drafted in support of the proposed development of the Paradys Photovoltaic Solar Energy Cluster and its associated grid connection infrastructure located outside of Viljoenskroon in the Free State. The term photovoltaic describes a solid-state electronic cell that produces direct current electrical energy from the radiant energy of the sun through a process known as the Photovoltaic Effect. This refers to light energy placing electrons into a higher state of energy to create electricity. Each PV cell is made of silicon (i.e., semiconductors), which is positively and negatively charged on either side, with electrical conductors attached to both sides to form a circuit. This circuit captures the released electrons in the form of an electric current (direct current).

The key components of the proposed project are described below:

- PV Panel Array - To produce up to 130MW, the proposed facility will require numerous linked cells placed behind a protective glass sheet to form a panel. Multiple panels will be required to form the solar PV arrays which will comprise the PV facility. The PV panels will be tilted at a optimum angle in order to capture the most sun.
- Wiring to Inverters - Sections of the PV array will be wired to inverters. The inverter is a pulse width mode inverter that converts direct current (DC) electricity to alternating current (AC) electricity at grid frequency.
- Connection to the grid - Connecting the array to the electrical grid requires transformation of the voltage from 480V to 33kV to 132kV. The normal components and dimensions of a distribution rated electrical substation will be required. Output voltage from the inverter is 480V and this is fed into step up transformers to 132kV. An onsite substation will be required on the site to step the voltage up to 132kV, after which the power will be evacuated into the national grid via the proposed power line. It is expected that generation from the facility will connect to the national grid. Corridor will cover options to connect to Mercury Substation, Existing Eskom lines with capacity and Eskom Switching stations of other Mulilo projects currently under development.
- Electrical reticulation network – An internal electrical reticulation network will be required and will be laid 2-4m underground as far as practically possible.
- Supporting Infrastructure – The following auxiliary buildings with basic services including water and electricity will be required on site:
 - Operations & Maintenance Building / Office
 - Switch gear and relay room
 - Staff lockers and changing room
 - Security control
 - Offices
- Battery storage – Battery Storage Facilities with a maximum height of 5m and a capacity of 2500MWh will be installed in a 6-hectare area.
- Roads - Access is most likely to be obtained via R502 Regional Road. This will be confirmed in the Traffic Impact Assessment which has been commissioned. An internal site road network will also be required to provide access to the solar field and associated infrastructure.

- Fencing - For health, safety and security reasons, the facility will be required to be fenced off from the surrounding farm. Fencing with a height between 4 meters will be used.

The properties included in the Paradys Cluster are (Figures 1-2):

Farm	Portion	Property Name
15	RE	Vlakfontein
157	RE	Smaldeel
173	RE	Biesiefontein
173	1	Biesiefontein
190	RE	Zaaiplaats
190	2	Zaaiplaats
190	3	Zaaiplaats
369	1	Kleinfontein
457	RE	Uitval

A Palaeontological Impact Assessment was requested for the Paradys PV Cluster project. To comply with the regulations of the South African Heritage Resources Agency (SAHRA) in terms of Section 38(8) of the National Heritage Resources Act, 1999 (Act No. 25 of 1999) (NHRA), a desktop Palaeontological Impact Assessment (PIA) was completed for the proposed development and is reported herein.

Table 1: National Environmental Management Act, 1998 (Act No. 107 of 1998) (NEMA) and Environmental Impact Assessment (EIA) Regulations, 2014 (as amended) - Requirements for Specialist Reports (Appendix 6).

	A specialist report prepared in terms of the Environmental Impact Regulations of 2017 must contain:	Relevant section in report
ai	Details of the specialist who prepared the report,	Appendix B
aii	The expertise of that person to compile a specialist report including a curriculum vitae	Appendix B
b	A declaration that the person is independent in a form as may be specified by the competent authority	Page
c	An indication of the scope of, and the purpose for which, the report was prepared	Section 1
ci	An indication of the quality and age of the base data used for the specialist report: SAHRIS palaeosensitivity map accessed – date of this report	Yes
cii	A description of existing impacts on the site, cumulative impacts of the proposed development and levels of acceptable change	Section 5
d	The date and season of the site investigation and the relevance of the season to the outcome of the assessment	N/A

	A specialist report prepared in terms of the Environmental Impact Regulations of 2017 must contain:	Relevant section in report
e	A description of the methodology adopted in preparing the report or carrying out the specialised process	Section 2
f	The specific identified sensitivity of the site related to the activity and its associated structures and infrastructure	Section 4
g	An identification of any areas to be avoided, including buffers	N/A
h	A map superimposing the activity including the associated structures and infrastructure on the environmental sensitivities of the site including areas to be avoided, including buffers;	N/A
i	A description of any assumptions made and any uncertainties or gaps in knowledge;	Section 5
j	A description of the findings and potential implications of such findings on the impact of the proposed activity, including identified alternatives, on the environment	Section 4
k	Any mitigation measures for inclusion in the EMPr	Section 8, Appendix A
l	Any conditions for inclusion in the environmental authorisation	N/A
m	Any monitoring requirements for inclusion in the EMPr or environmental authorisation	Section 8, Appendix A
ni	A reasoned opinion as to whether the proposed activity or portions thereof should be authorised	Section 6
nii	If the opinion is that the proposed activity or portions thereof should be authorised, any avoidance, management and mitigation measures that should be included in the EMPr, and where applicable, the closure plan	Sections 6, 8
o	A description of any consultation process that was undertaken during the course of carrying out the study	N/A
p	A summary and copies of any comments that were received during any consultation process	N/A
q	Any other information requested by the competent authority.	N/A
2	Where a government notice gazetted by the Minister provides for any protocol or minimum information requirement to be applied to a specialist report, the requirements as indicated in such notice will apply.	N/A

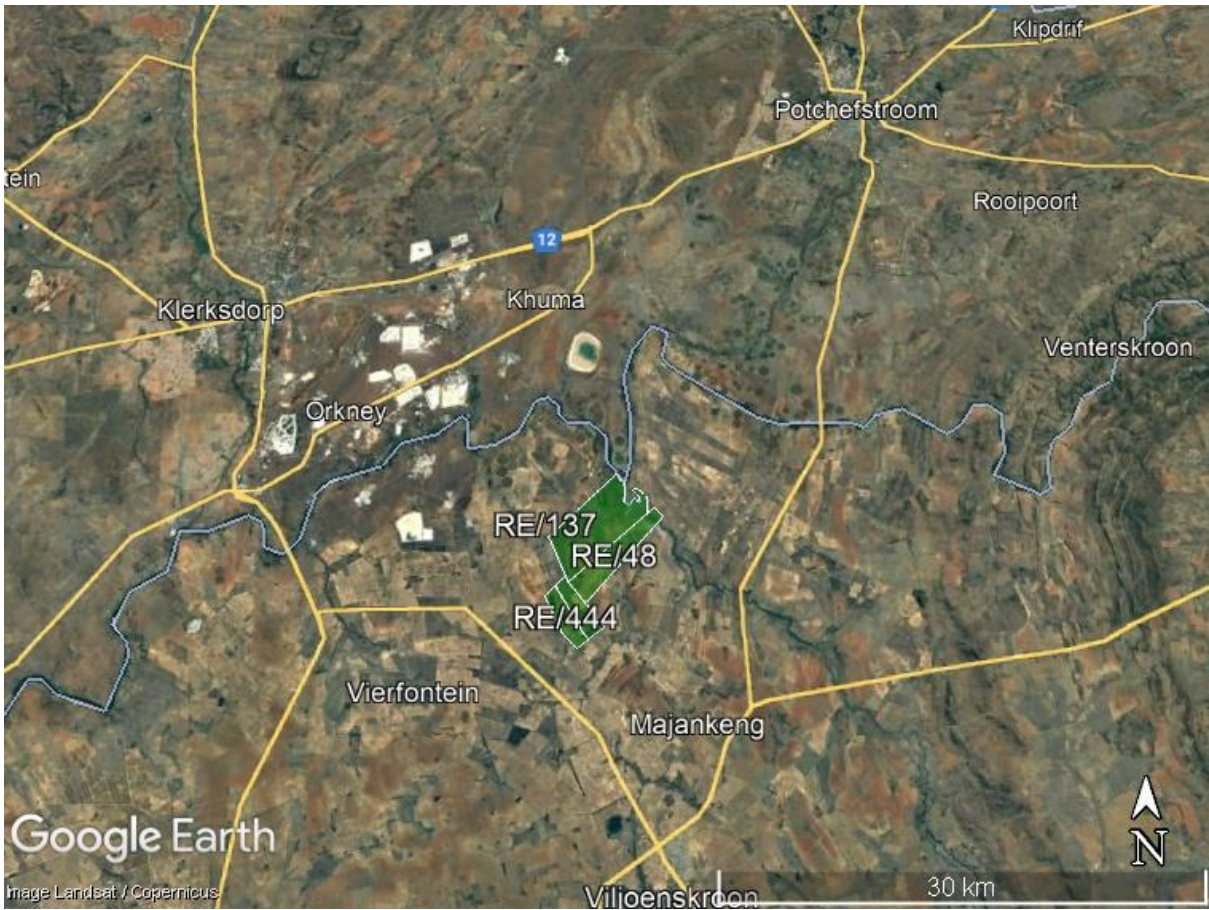


Figure 1: Google Earth map of the general area to show the relative landmarks. The Paradys Cluster general area is shown by the green polygons but see Figure 2 for details.

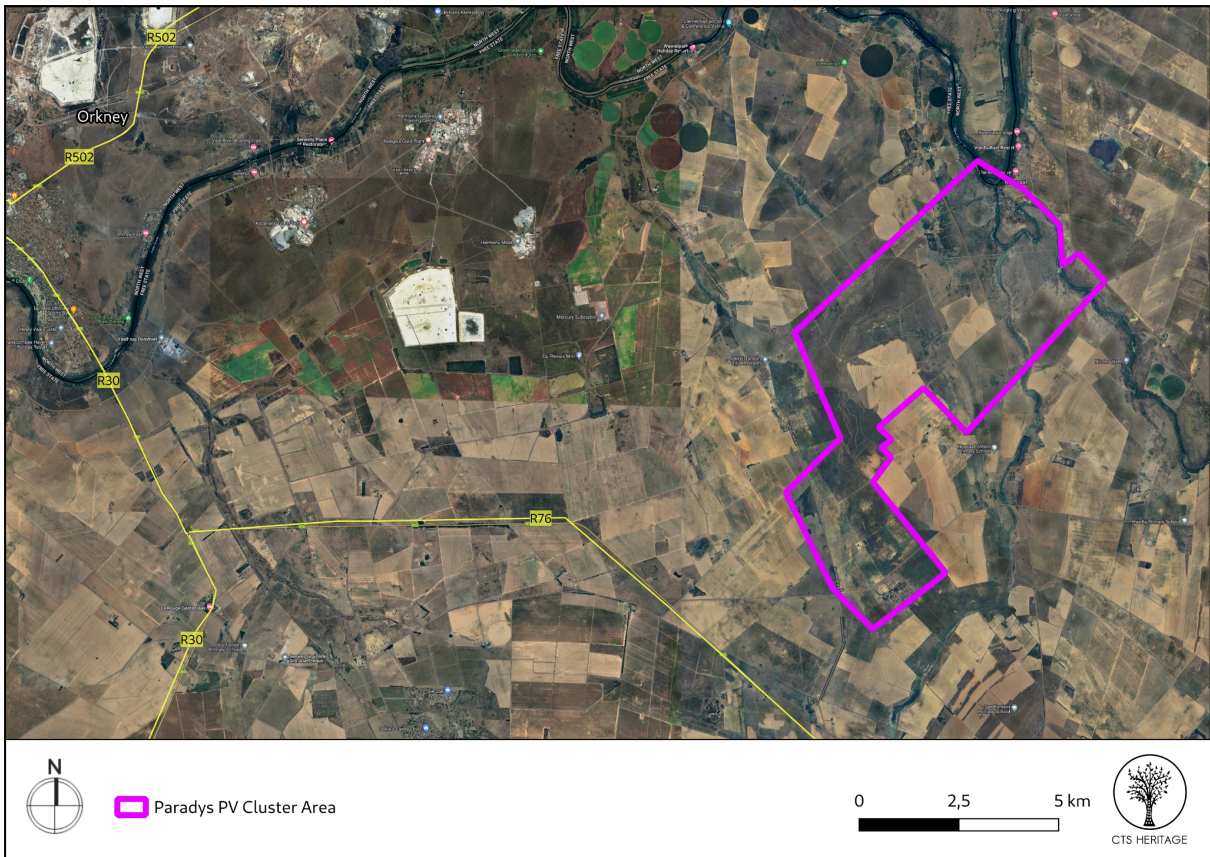


Figure 2: Google Earth Map of the proposed development of the Paradys Solar Energy Cluster

2. Methods and Terms of Reference

The Terms of Reference (ToR) for this study were to undertake a PIA and provide feasible management measures to comply with the requirements of SAHRA.

The methods employed to address the ToR included:

1. Consultation of geological maps, literature, palaeontological databases, published and unpublished records to determine the likelihood of fossils occurring in the affected areas. Sources include records housed at the Evolutionary Studies Institute at the University of the Witwatersrand and SAHRA databases;
2. Where necessary, site visits by a qualified palaeontologist to locate any fossils and assess their importance (*not applicable to this assessment*);
3. Where appropriate, collection of unique or rare fossils with the necessary permits for storage and curation at an appropriate facility (*not applicable to this assessment*); and
4. Determination of fossils' representivity or scientific importance to decide if the fossils can be destroyed or a representative sample collected (*not applicable to this assessment*).

3. Geology and Palaeontology

i. Project location and geological context

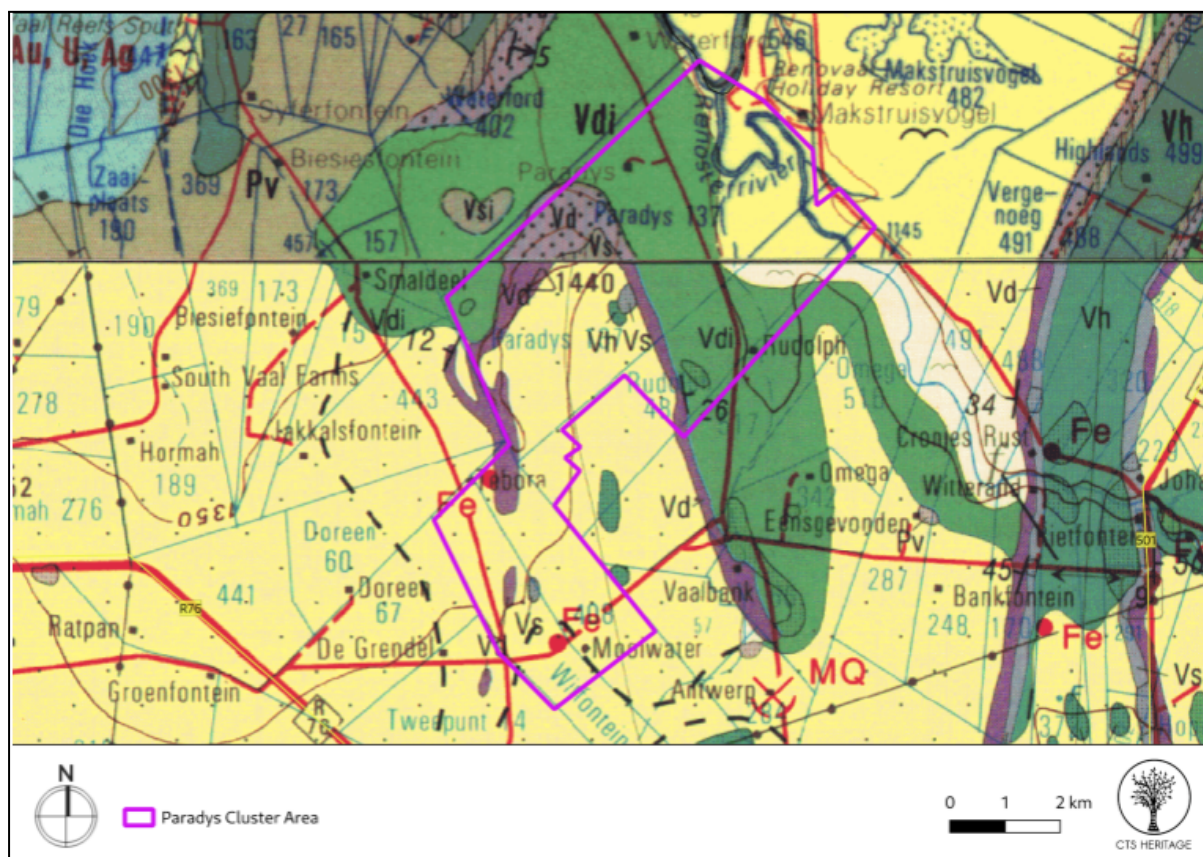


Figure 3: Geological map of the area around the Paradys PV Cluster. The location of the proposed project is indicated within the purple polygon. Abbreviations of the rock types are explained in Table 2. Map enlarged from the Geological Survey 1: 250 000 map 2626 West Rand (top) and 2726 Kroonstad (bottom).

Table 2: Explanation of symbols for the geological map and approximate ages (Eriksson et al., 2006; Johnson et al., 2006; Zeh et al., 2020). SG = Supergroup; Fm = Formation; Ma = million years; grey shading = formations impacted by the project.

Symbol	Group/Formation	Lithology	Approximate Age
Q	Quaternary Kalahari Group	Aeolian sand	Quaternary, ca 1.0 Ma to present
Pv	Vryheid Fm, Eccca Group, Karoo SG	Shale, sandstone, siltstone, coal seams	Early Permian Ca 290-280 Ma
Vdi	Diabase	Intrusive volcanic dykes and sills	Post Transvaal SG
Vsi	Silverton Fm, Pretoria Group, Transvaal SG	Shale, carbonaceous in places, hornfels, chert	Ca 2202 Ma
Vd	Daspoort Fm, Pretoria Group, Transvaal SG	Quartzite	<2240 Ma

Symbol	Group/Formation	Lithology	Approximate Age
Vh	Hekpoort Fm, Pretoria Group, Transvaal SG	Andesitic lava (volcanic rocks)	Ca 2224 Ma

The project lies in the southern part of the Transvaal Basin with some rocks of the Transvaal Supergroup that unconformably overlain by the much younger Quaternary sands and alluvium of the Kalahari Group. Karoo supergroup rocks are known only from boreholes, not surface exposures, so the lower map's Quaternary sands should also be reflected on the upper map, rather than the Vryheid Formation.

The Late Archaean to early Proterozoic Transvaal Supergroup comprises one of world's earliest carbonate platform successions (Beukes, 1987; Eriksson et al., 2006; Zeh et al., 2020). In some areas there are well preserved stromatolites that are evidence of the photosynthetic activity of blue green bacteria and green algae. These microbes formed colonies in warm, shallow seas.

In the Transvaal Basin the Transvaal Supergroup is divided into two Groups, the lower Chuniespoort Group and the upper Pretoria Group (with ten formations; Eriksson et al., 2006). The Chuniespoort Group is divided into the basal Malmani Subgroup that comprises dolomites and limestones and is divided into five formations based on chert content, stromatolitic morphology, intercalated shales and erosion surfaces. The top of the Chuniespoort Group has the Penge Formation and the Deutschland Formation.

Making up the lower Pretoria Group are the Timeball Hill Formation and the Boshhoek Formation. The **Hekpoort**, Dwaalheuwel, Strubenkop and **Daspoort Formations** form a sequence as the middle part of the Pretoria Group, Transvaal Supergroup, and represent rocks that are over 2060 million years old. The Hekpoort Formation is a massive lava deposit and is overlain by the Dwaalheuwel conglomerates, siltstone and sandstone (not present here). A hiatus separates the Strubenkop Formation slates and shales from the overlying quartzites of the Daspoort Formation. Upper Pretoria Group formations are the Silverton, Magaliesberg, Vermont, Lakenvalei, Nederhorst, Steenkampsberg and Houtenbek Formations

The Transvaal sequence has been interpreted as three major cycles of basin infill and tectonic activity with the first deep basin sediments forming the Chuniespoort Group, the second cycle deposited the lower Pretoria Group, and the sediments in this area are from the interim lowstand that preceded the third cycle. These sediments were deposited in shallow lacustrine, alluvial fan and braided stream environments (Eriksson et al., 2012).

The model of Eriksson et al., 2006, 2012 and collaborators shows the Transvaal Basin to have experienced three major tectonically controlled transgressive-regressive sequences. The first shallow seaway with a carbonate and a BIF platform is represented by the Chuniespoort Group followed by an 80 Ma gap. The second shallow embayment with clastic sediments is represented by the Rooihogte and Timeball Hill Formations, and the third shallow embayment is represented by the Daspoort, Silverton and Magaliesberg Formations.

The basal **Rooihoogte Formation** overlies a deeply weathered palaeotopography that developed on the carbonates of the Chuniepoort Group. Composition of the rocks of this formation vary locally but generally comprise chert conglomerate, chert-rich sandstones, mudrocks and sandstones. An alluvial fan and fluvial braid-plain depositional setting has been interpreted from the conglomerates and sandstones, and a shallow lacustrine basin has been interpreted for the mudrocks and dolomites (Eriksson et al., 2006).

Overlying the Rooihoogte Formation is the **Timeball Hill Formation** which is composed of thick shales and subordinate sandstones that were deposited in a fluvio-deltaic basin-filling sequence (Eriksson et al., 2006). A number of facies are included in this formation. At the base is black shale facies associated with subsurface lavas and pyroclastic rocks of the Bushy Bend Lava Member. Above these are rhythmically interbedded mudstones/siltstones and fine-grained sandstones that have been interpreted as turbidite deposits (Eriksson et al., 2006). These fine-grained sediments grade up into the medial Klapperkop Quartzite Member that has been interpreted as fluvio-deltaic sandstones which fed the more distal turbidites (ibid). Above this is an upper shale member and rhythmite facies. In the east of the Transvaal Basin the Upper Timeball Hill shales have undergone extensive soft-sediment deformation caused by the onset of tectonic instability that led to the eventual fan deposits of the Boshhoek Formation and the flood basalts of the Hekpoort Formation (ibid).

The **Hekpoort Formation** is composed of subaerial lavas that intruded into the Boshhoek sandstones. These basaltic-andesitic lavas are thickest in the south of the Transvaal basin, thinning to the west and thinnest in the northeast (Eriksson et al., 2006).

There is an unconformity between the Strubenkop shales and the overlying **Daspoort Formation**. In the east of the Transvaal Basin the latter is composed of mature quartz arenites and subordinate mudrocks and ironstones, but in the west of the basin it is mostly made up of immature sandstones, pebbly arenites, conglomerates and mudrocks (Eriksson et al., 2006). This formation probably represents a fluvial setting succeeded by a shallow marine setting that was the precursor to a major transgression that formed the succeeding Silverton Formation (Erikson et al., 2006). At the top of the Daspoort Formation are localised occurrences of stromatolitic carbonates and cherts (ibid).

Within the **Silverton Formation** are the lower Boven Shale Member, Machadorp Volcanic Member and upper Lydenburg Shale Member. The lower shales are alumina-rich and best represented in the eastern part of the Transvaal Basin. Shallow subaqueous eruptives formed the tholiitic basalts and then the tuffaceous shales that are high in CaO-MnO-MgO formed the Lydenburg Member (Eriksson et al., 2006). The Silverton Formation has been interpreted as a high-stand facies tract that reflected the advance of an epeiric sea onto the Kaapvaal Craton from the east, so the Daspoort Formation would represent a lowstand facies tract or a transgressive systems tract (ibid).

There were two large basins dominating southern Africa during the Cenozoic, with the Kalahari Basin to the west and the Bushveld basin to the east. Both basins are bounded

along their southern extent by the more or less west-east trending Griqualand-Transvaal Axis (Partridge et al., 2006). These sediments are not easy to date but recent attempts are gradually filling in the history of the sands, sand dunes and inter-dunes (Botha, 2021).

Quaternary Kalahari sands cover large parts of the rocks in this region, especially to the west. This is the largest and most extensive palaeo-erg in the world (Partridge et al., 2006) and is composed of extensive aeolian and fluvial sands, sand dunes, calcrete, scree and colluvium. Periods of aridity have overprinted the sands, and calcrete and silcrete are common. Most geological maps indicate these sands simply descriptively (aeolian sand, gravelly sand, calcrete) or they are lumped together as the Gordonia Formation because the detailed regional lithostratigraphic work has not been done. Nonetheless, these sands have eroded from the interior and have been transported by wind or water to fill the basin. Reworking of the sands or stabilisation by vegetation has occurred. Probable ages of dune formation are around 100 kya (thousand years), 60 kya, 27-23 kya and 17-10 kya (in Botha, 2021).

ii. Palaeontological context

The palaeontological sensitivity of the area under consideration is presented in Figure 4. The site for development is in the moderately fossiliferous Kalahari sands (green) and moderately fossiliferous Daspoort Formation (orange) and non-fossiliferous Hekpoort Formation (grey).

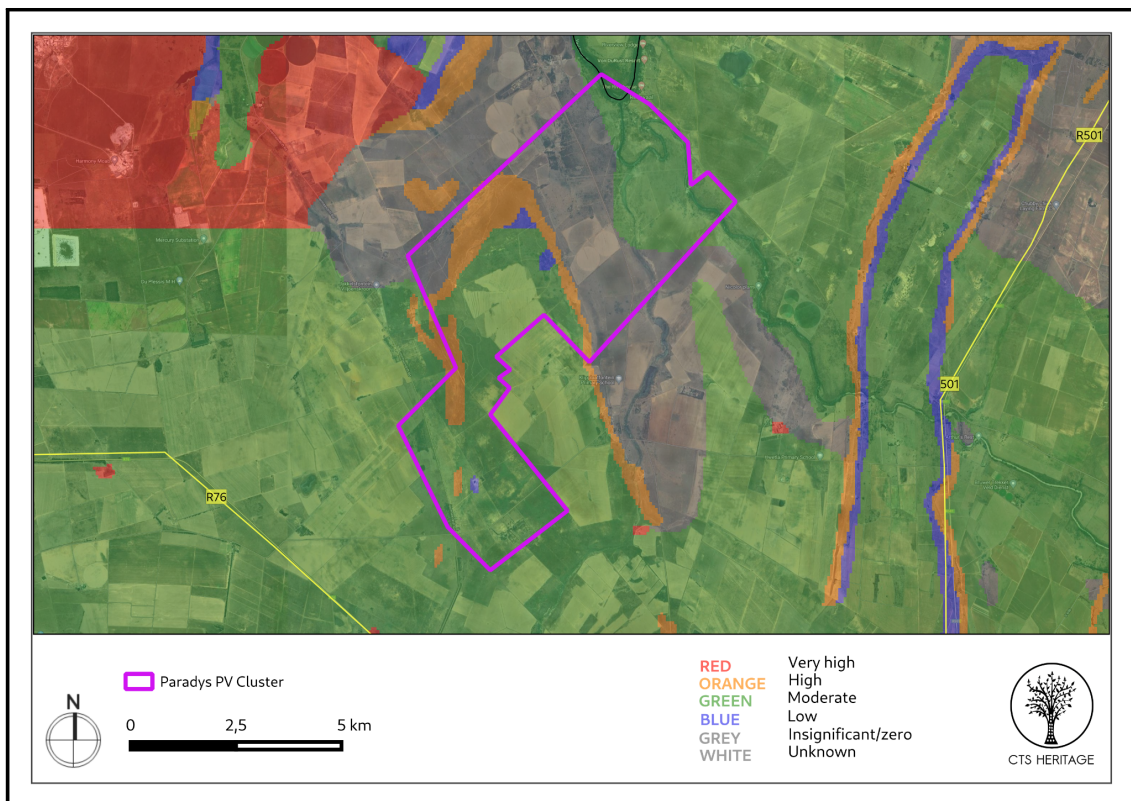


Figure 4: SAHRIS palaeosensitivity map for the site for the proposed Paradys PV Cluster shown within the purple polygon. Background colours indicate the following degrees of sensitivity: red = very highly sensitive; orange/yellow = high; green = moderate; blue = low; grey = insignificant/zero.

Volcanic rocks such as diabase and andesitic lavas (Hekpoort Formation) do not preserve fossils as they have originated from below the earth's surface. No fossils have been reported from the Daspoort Formation quartzites but this formation is lumped together in the Palaeotechnical Report for the Free State (Groenewald et al., 2014) with the Magaliesberg, Timeball Hill and Silvertown Formations, only some of which have recorded stromatolites. In addition, the area is covered with soils and has been cultivated for decades so any rocks have been removed.

Aeolian sands and alluvium are fairly mobile and very porous so they do not provide suitable conditions for preservation of organic matter (Cowan, 1995). Only in places where the sands have been waterlogged, such as palaeo-pans or palaeo-springs, is there any chance of fossilisation. For example, roots can be encased in calcium-rich or silica-rich sands and crusts, known as rhizoliths or rhizocretions, can form around the roots, invertebrates or bones around the margin of a pond, pan or spring (Klappa, 1980; Cramer and Hawkins, 2009; Peters et al., 2022).

Note: in the southern part of the map in figure 3, there is a disjunction between the Vryheid Formation rocks ending abruptly along the line that joins the maps. The southern map shows the surface rocks, Quaternary sands and alluvium in this case, while the northern map shows the rocks from borehole core information, i.e. the underlying rocks. Since this project will be on the surface only, it is advisable to use the surface strata – the moderately fossiliferous Quaternary sands.

4. Impact assessment

An assessment of the potential impacts to possible palaeontological resources considers the criteria encapsulated in Table 3:

Table 3a: Criteria for assessing impacts

PART A: DEFINITION AND CRITERIA		
Criteria for ranking of the SEVERITY/NATURE of environmental impacts	H	Substantial deterioration (death, illness or injury). Recommended level will often be violated. Vigorous community action.
	M	Moderate/ measurable deterioration (discomfort). Recommended level will occasionally be violated. Widespread complaints.
	L	Minor deterioration (nuisance or minor deterioration). Change not measurable/ will remain in the current range. Recommended level will never be violated. Sporadic complaints.
	L+	Minor improvement. Change not measurable/ will remain in the current range. Recommended level will never be violated. Sporadic complaints.
	M+	Moderate improvement. Will be within or better than the recommended level. No observed reaction.
	H+	Substantial improvement. Will be within or better than the recommended level. Favourable publicity.

Criteria for ranking the DURATION of impacts	L	Quickly reversible. Less than the project life. Short term
	M	Reversible over time. Life of the project. Medium term
	H	Permanent. Beyond closure. Long term.
Criteria for ranking the SPATIAL SCALE of impacts	L	Localised - Within the site boundary.
	M	Fairly widespread – Beyond the site boundary. Local
	H	Widespread – Far beyond site boundary. Regional/ national
PROBABILITY (of exposure to impacts)	H	Definite/ Continuous
	M	Possible/ frequent
	L	Unlikely/ seldom

Table 3b: Impact Assessment

PART B: Assessment		
SEVERITY/NATURE	H	-
	M	-
	L	Soils do not preserve fossils; so far there are no records from the Daspoort Fm or the Quaternary sands of trace fossils, plant or animal fossils in this region so it is very unlikely that fossils occur on the site. The impact would be negligible
	L+	-
	M+	-
	H+	-
	DURATION	L
	M	-
	H	Where manifest, the impact will be permanent.
SPATIAL SCALE	L	Since the only possible fossils within the area would be trace fossils in the Daspoort Fm quartzites or in the Quaternary cemented sands, the spatial scale will be localised within the site boundary.
	M	-
	H	-
PROBABILITY	H	-
	M	-
	L	It is extremely unlikely that any fossils would be found in the loose soils and sands that cover the area or in the rocks below ground. Nonetheless, a Fossil Chance Find Protocol should be added to the eventual EMPr.

Based on the nature of the project, surface activities may impact upon the fossil heritage if preserved in the development footprint. The geological structures suggest that the rocks are either much too old to contain body fossils or too young and friable to preserve fossils. Furthermore, the material to be excavated are soils and sands and they do not preserve fossils. Since there is an extremely small chance that fossils from below

ground may be disturbed, a Fossil Chance Find Protocol has been added to this report. Taking account of the defined criteria, the potential impact to fossil heritage resources is extremely low.

5. Assumptions and uncertainties

Based on the geology of the area and the palaeontological record as we know it, it can be assumed that the formation and layout of the dolerites, sandstones, shales and sands are typical for the country and only some contain trace fossils or may cover younger fossil plant, insect, invertebrate and vertebrate material. The soils and sands of the Quaternary period would not preserve fossils. See note about the Vryheid Formation on p 13.

6. Recommendation

Based on experience and the lack of any previously recorded fossils from the area, it is extremely unlikely that any fossils would be preserved in the overlying soils and sands of the Quaternary. There is a very small chance that fossils may occur below ground in the quartzites but this is very unlikely. Nonetheless, a Fossil Chance Find Protocol should be added to the EMP. If fossils are found by the environmental officer, or other responsible person once excavations for foundations and infrastructure have commenced then they should be rescued and a palaeontologist called to assess and collect a representative sample. The impact on the palaeontological heritage would be low, so as far as the palaeontology is concerned, the project should be authorised.

ASPECT	SCREENING TOOL SENSITIVITY	VERIFIED SENSITIVITY	OUTCOME STATEMENT/ PLAN OF STUDY	RELEVANT SECTION MOTIVATING VERIFICATION
Palaeontology	High to moderate	Low to very low	Paleontological Impact Assessment	Section 7.2. SAHRA Requirements

7. References

Bosch, P., Eriksson, P., 2008. A note on two occurrences of inferred microbial mat features preserved in the c. 2.1 Ga Magaliesberg Formation (Pretoria Group, Transvaal Supergroup) sandstones, near Pretoria, South Africa. *South African Journal of Geology* 111, 251-262.

Cramer, M.D., Hawkins, H.-J., 2009. A physiological mechanism for the formation of root casts. *Palaeogeography, Palaeoclimatology, Palaeoecology* 274, 125-133.

Cowan, R., 1995. *History of Life*. 2nd Edition. Blackwell Scientific Publications, Boston. 462pp.

Davies, N.S., Liu, A.G., Gibling, M.R., Miller, R.F., 2016. Resolving MISS conceptions and misconceptions: A geological approach to sedimentary surface textures generated by microbial and abiotic processes *Earth-Science Reviews* 154, 210–246.

Eriksson, P.G., Altermann, W., 1998. Eriksson, An overview of the geology of the Transvaal Supergroup dolomites (South Africa). *Environmental Geology* 36, 178-188.

Eriksson, P.G., Altermann, W., Hartzler, F.J., 2006. The Transvaal Supergroup and its pre-cursors. In: Johnson, M.R., Anhaeusser, C.R. and Thomas, R.J., (Eds). *The Geology of South Africa*. Geological Society of South Africa, Johannesburg / Council for Geoscience, Pretoria. pp 237-260.

Eriksson, P.G., Bartman, R., Catuneanu, O., Mazumder, R., Lenhardt, N., 2012. A case study of microbial mats-related features in coastal epeiric sandstones from the Palaeoproterozoic Pretoria Group, Transvaal Supergroup, Kaapvaal craton, South Africa; the effect of preservation (reflecting sequence stratigraphic models) on the relationship between mat features and inferred palaeoenvironment. *Sedimentary Geology* 263, 67-75.

Groenewald, G., Groenewald, D., Groenewald, S., 2014. SAHRA Palaeotechnical Report. Palaeontological Heritage of Limpopo, 23 pages.

Johnson, M.R., van Vuuren, C.J., Visser, J.N.J., Cole, D.I., Wickens, H.deV., Christie, A.D.M., Roberts, D.L., Brandl, G., 2006. Sedimentary rocks of the Karoo Supergroup. In: Johnson, M.R., Anhaeusser, C.R. and Thomas, R.J., (Eds). *The Geology of South Africa*. Geological Society of South Africa, Johannesburg / Council for Geoscience, Pretoria. Pp 461 – 499.

Noffke, N., Gerdes, G., Klenke, T. and Krumbein, W.E. (2001). Microbially induced sedimentary structures – a new category within the classification of primary sedimentary structures. *Journal of Sedimentary Research*, A71, 649-656.

Klappa, C.F., 1980. Rhizoliths in terrestrial carbonates: classification, recognition, genesis and significance. *Sedimentology* 27, 613-629.

Parizot, M., Eriksson, P.G., Aifa, T., Sarkar, S., Banerjee, S., Catuneanu, O., Altermann, W., Bumby, A.J., Bordy, E.M., Rooy, J.L. and Boshoff, A.J. (2005). Suspected microbial mat-related crack-like sedimentary structures in the Palaeoproterozoic Magaliesberg Formation sandstones, South Africa. *Precambrian Research*, 138, 274-296.

Peters, C.R., Bamford, M.K., Shields, J.P., 2022. Ch 33. Lower Bed II Olduvai Basin, Tanzania: Wetland Sedge Taphonomy, Seasonal Pasture, and Implications for Hominin Scavenging. In Reynolds, S.C., Bobe, R., (Eds). *African Paleoecology and Human Evolution*, Cambridge University Press & Assessment. 413-434.

Plumstead, E.P., 1969. Three thousand million years of plant life in Africa. Geological Society of southern Africa, Annexure to Volume LXXII. 72pp + 25 plates.

Truswell, J.F., Eriksson, K.A., 1973. Stromatolitic associations and their palaeo-environmental significance: a reappraisal of a lower Proterozoic locality from the northern Cape Province, South Africa. *Sedimentary Geology* 10, 1–23.

Zeh, A., Wilson, A.H., Gerdes, A., 2020. Zircon U-Pb-Hf isotope systematics of Transvaal Supergroup – Constraints for the geodynamic evolution of the Kaapvaal Craton and its hinterland between 2.65 and 2.06 Ga. *Precambrian Research* 345, 105760.

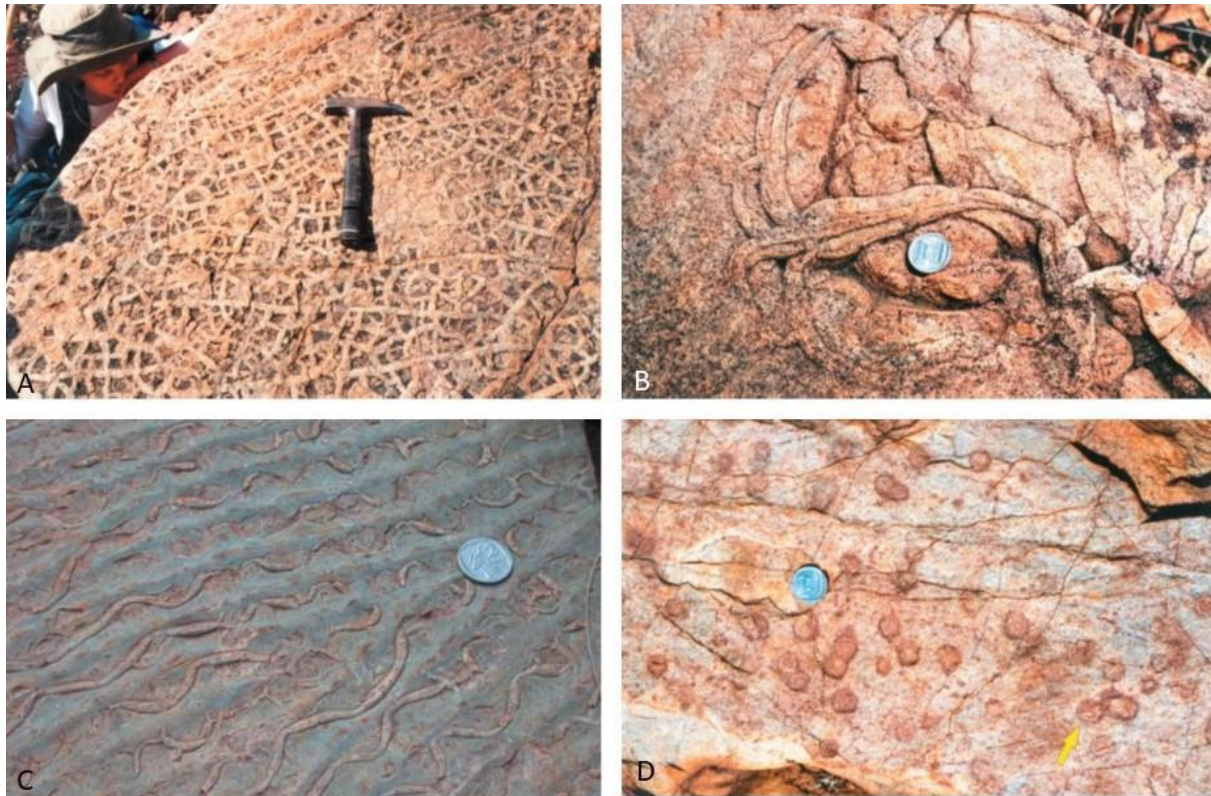
<https://doi.org/10.1016/j.precamres.2020.105760>

8. Chance Find Protocol

Monitoring Programme for Palaeontology – to commence once the excavations / drilling activities begin.

1. The following procedure is only required if fossils are seen on the surface and when drilling/excavations commence.
2. When excavations begin the rocks must be given a cursory inspection by the environmental officer or designated person. Any fossiliferous material (plants, insects, bone or coal) should be put aside in a suitably protected place. This way the project activities will not be interrupted.
3. Photographs of similar fossils must be provided to the developer to assist in recognizing the trace fossils such as stromatolites or microbially features (trails, curls, rip-ups, mudcracks) trace fossils in the dolomites, limestones, shales and mudstones (for example see Figures 5-6). This information will be built into the EMP's training and awareness plan and procedures.
4. Photographs of the putative fossils can be sent to the palaeontologist for a preliminary assessment.
5. If there is any possible fossil material found by the developer/environmental officer then the qualified palaeontologist sub-contracted for this project, should visit the site to inspect the selected material and check the dumps where feasible.
6. Fossil plants or vertebrates that are considered to be of good quality or scientific interest by the palaeontologist must be removed, catalogued and housed in a suitable institution where they can be made available for further study. Before the fossils are removed from the site a SAHRA permit must be obtained. Annual reports must be submitted to SAHRA as required by the relevant permits.
7. If no good fossil material is recovered then no site inspections by the palaeontologist will be necessary. A final report by the palaeontologist must be sent to SAHRA once the project has been completed and only if there are fossils.
8. If no fossils are found and the excavations have finished then no further monitoring is required.

Appendix A – Examples of fossils from the Pretoria Group



Magaliesberg Fm trace fossils, near Pretoria (all from Bosch & Eriksson, 2008): A – cracks, B – sinuous structure, C – *Manchuriphycus*, D – circular structures. R1 coin for scale.

Figure 5. Photographs of microbial features from the Magaliesberg Formation (in Bosch and Eriksson, 2008).



Figure 6: Photographs of trace fossils that can be found in Kalahari sands if there is a water source such as a palaeo-spring or palaeo-pan.

9. Appendix B – Details of specialist

Curriculum vitae (short) - Marion Bamford PhD January 2023

Present employment: Professor; Director of the Evolutionary Studies Institute.
Member Management Committee of the NRF/DSI Centre of
Excellence Palaeosciences, University of the Witwatersrand,
Johannesburg, South Africa

Telephone : +27 11 717 6690
Cell : 082 555 6937

E-mail : marion.bamford@wits.ac.za ;
marionbamford12@gmail.com

ii) Academic qualifications

Tertiary Education: All at the University of the Witwatersrand:

1980-1982: BSc, majors in Botany and Microbiology. Graduated April 1983.

1983: BSc Honours, Botany and Palaeobotany. Graduated April 1984.

1984-1986: MSc in Palaeobotany. Graduated with Distinction, November 1986.

1986-1989: PhD in Palaeobotany. Graduated in June 1990.

iii) Professional qualifications

Wood Anatomy Training (overseas as nothing was available in South Africa):

1994 - Service d'Anatomie des Bois, Musée Royal de l'Afrique Centrale, Tervuren, Belgium, by Roger Dechamps

1997 - Université Pierre et Marie Curie, Paris, France, by Dr Jean-Claude Koeniguer

1997 - Université Claude Bernard, Lyon, France by Prof Georges Barale, Dr Jean-Pierre Gros, and Dr Marc Philippe

iv) Membership of professional bodies/associations

Palaeontological Society of Southern Africa

Royal Society of Southern Africa - Fellow: 2006 onwards

Academy of Sciences of South Africa - Member: Oct 2014 onwards

International Association of Wood Anatomists - First enrolled: January 1991

International Organization of Palaeobotany - 1993+

Botanical Society of South Africa

South African Committee on Stratigraphy - Biostratigraphy - 1997 - 2016

SASQUA (South African Society for Quaternary Research) - 1997+

PAGES - 2008 -onwards: South African representative

ROCEEH / WAVE - 2008+

INQUA - PALCOMM - 2011+onwards

v) Supervision of Higher Degrees

All at Wits University

Degree	Graduated/completed	Current
Honours	13	0
Masters	13	3
PhD	13	7
Postdoctoral fellows	14	4

vi) Undergraduate teaching

Geology II - Palaeobotany GEOL2008 - average 65 students per year

Biology III - Palaeobotany APES3029 - average 25 students per year

Honours - Evolution of Terrestrial Ecosystems; African Plio-Pleistocene Palaeoecology;

Micropalaeontology - average 12 - 20 students per year.

vii) Editing and reviewing

Editor: *Palaeontologia africana*: 2003 to 2013; 2014 - Assistant editor

Guest Editor: Quaternary International: 2005 volume
Member of Board of Review: Review of Palaeobotany and Palynology: 2010 –
Associate Editor: Cretaceous Research: 2018-2020
Associate Editor: Royal Society Open: 2021 -
Review of manuscripts for ISI-listed journals: 30 local and international journals

viii) **Palaeontological Impact Assessments**

25 years' experience in PIA site and desktop projects

- Selected from recent projects only – list not complete:
- Skeerpoort Farm Mast 2020 for HCAC
- Vulindlela Eco village 2020 for 1World
- KwaZamakhule Township 2020 for Kudzala
- Sunset Copper 2020 for Digby Wells
- McCarthy-Salene 2020 for Prescali
- VLNR Lodge 2020 for HCAC
- Madadeni mixed use 2020 for Enviropro
- Frankfort-Windfield Eskom Powerline 2020 for 1World
- Beaufort West PV Facility 2021 for ACO Associates
- Copper Sunset MR 2021 for Digby Wells
- Sannaspos PV facility 2021 for CTS Heritage
- Smithfield-Rouxville-Zastron PL 2021 for TheroServe
- Glosam Mine 2022 for AHSA
- Wolf-Skilpad-Grassridge OHPL 2022 for Zutari
- Iziduli and Msenge WEFs 2022 for CTS Heritage
- Hendrina North and South WEFs & SEFs 2022 for Cabanga
- Dealesville-Springhaas SEFs 2022 for GIBB Environmental
- Vhuvhili and Mukondeleli SEFs 2022 for CSIR
- Chemwes & Stilfontein SEFs 2022 for CTS Heritage
- Equestria Exts housing 2022 for Beyond Heritage
- Zeerust Salene boreholes 2022 for Prescali
- Tsakane Sewer upgrade 2022 for Tsimba
- Transnet MPP inland and coastal 2022 for ENVASS
- Ruighoek PRA 2022 for SLR Consulting (Africa)
- Namli MRA Steinkopf 2022 for Beyond Heritage

ix) **Research Output**

Publications by M K Bamford up to January 2022 peer-reviewed journals or scholarly books: over 170 articles published; 5 submitted/in press; 14 book chapters.

Scopus h-index = 30; Google Scholar h-index = 39; -i10-index = 116 based on 6568 citations.

Conferences: numerous presentations at local and international conferences.