

**Palaeontological Impact Assessment for the  
proposed Sinathingzi housing project, south-west  
of Pietermaritzburg, uMsunduzi Local  
Municipality,  
KwaZulu Natal Province**

**Desktop Study (Phase 1)**

**For**

**JLB Consulting**

**14 March 2022**

**Prof Marion Bamford**

Palaeobotanist

P Bag 652, WITS 2050

Johannesburg, South Africa

[Marion.bamford@wits.ac.za](mailto:Marion.bamford@wits.ac.za)

## **Expertise of Specialist**

The Palaeontologist Consultant: Prof Marion Bamford  
Qualifications: PhD (Wits Univ, 1990); FRSSAf, mASSAf  
Experience: 33 years research and lecturing in Palaeontology  
25 years PIA studies and over 300 projects completed

## **Declaration of Independence**

This report has been compiled by Professor Marion Bamford, of the University of the Witwatersrand, sub-contracted by JLB Consulting, Durban, South Africa. The views expressed in this report are entirely those of the author and no other interest was displayed during the decision-making process for the Project.

Specialist: Prof Marion Bamford

A handwritten signature in blue ink that reads "MKBamford". The signature is written in a cursive style and is positioned above a horizontal line.

Signature:

## **Executive Summary**

A Palaeontological Impact Assessment was requested for the Construction of civil infrastructure and 1400 low-income housing and 600 sites for GAP market housing for the Sinathing Phase 1 Human Settlements Project. The Applicant is the uMsunduzi Local Municipality (Pietermaritzburg), KwaZulu Natal.

To comply with the regulations of the South African Heritage Resources Agency (SAHRA) in terms of Section 38(8) of the National Heritage Resources Act, 1999 (Act No. 25 of 1999) (NHRA), a desktop Palaeontological Impact Assessment (PIA) was completed for the proposed development.

The proposed site lies on non-fossiliferous dolerite and Quaternary alluvium, and on the Pietermaritzburg Formation that rarely has trace fossils. Only the southern part of the area is on potentially fossiliferous shales of the Vryheid Formation (Ecca Group, Karoo Supergroup). The area is already very disturbed and covered by soils and vegetation so it is unlikely to find fossils until the ground is broken. Therefore, a Fossil Chance Find Protocol should be added to the EMPr. Based on this information it is recommended that no further palaeontological impact assessment is required unless fossils are found by the contractor, developer, environmental officer or any other designated responsible person once excavations for foundations, amenities and roads have commenced. As far as the palaeontology is concerned, the project should be authorised.

## Table of Contents

Expertise of Specialist .....	1
Declaration of Independence .....	1
1. Background .....	4
2. Methods and Terms of Reference.....	7
3. Geology and Palaeontology.....	8
i. Project location and geological context .....	8
ii. Palaeontological context.....	9
4. Impact assessment.....	10
5. Assumptions and uncertainties.....	12
6. Recommendation.....	12
7. References .....	13
8. Chance Find Protocol .....	14
9. Appendix A – Examples of fossils .....	15
10. Appendix B – Details of specialist.....	16
Figure 1: Google Earth map of the general area to show the relative land marks. ....	6
Figure 2: Google Earth Map of the proposed development .....	7
Figure 3: Geological map of the area around the project site.....	8
Figure 4: SAHRIS palaeosensitivity map for the site .....	10

# 1. Background

The uMsunduzi Local Municipality is planning the construction of civil infrastructure and 1400 low-income housing and 600 sites for GAP market housing for the Sinathing Phase 1 Human Settlement Project.

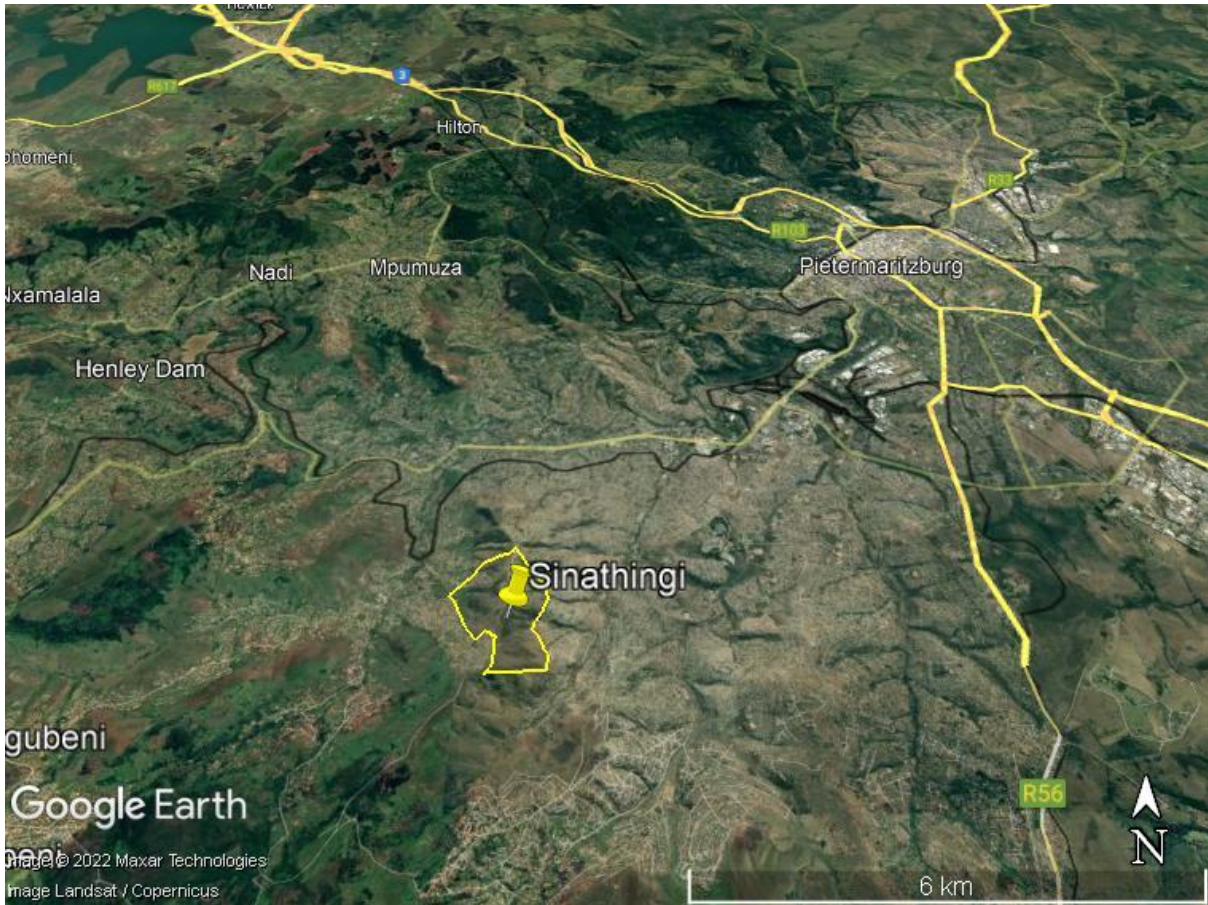
The site is about 6 km southwest of uMsunduzi (Pietermaritzburg) and within Edendale (Figures 1, 2). Most of the land is vacant but has been disturbed by peri-urban and some rural activities.

A Palaeontological Impact Assessment was requested for the Sinathing housing project. To comply with the regulations of the South African Heritage Resources Agency (SAHRA) in terms of Section 38(8) of the National Heritage Resources Act, 1999 (Act No. 25 of 1999) (NHRA), a desktop Palaeontological Impact Assessment (PIA) was completed for the proposed development and is reported herein.

Table 1: National Environmental Management Act, 1998 (Act No. 107 of 1998) (NEMA) and Environmental Impact Assessment (EIA) Regulations, 2014 (as amended) - Requirements for Specialist Reports (Appendix 6).

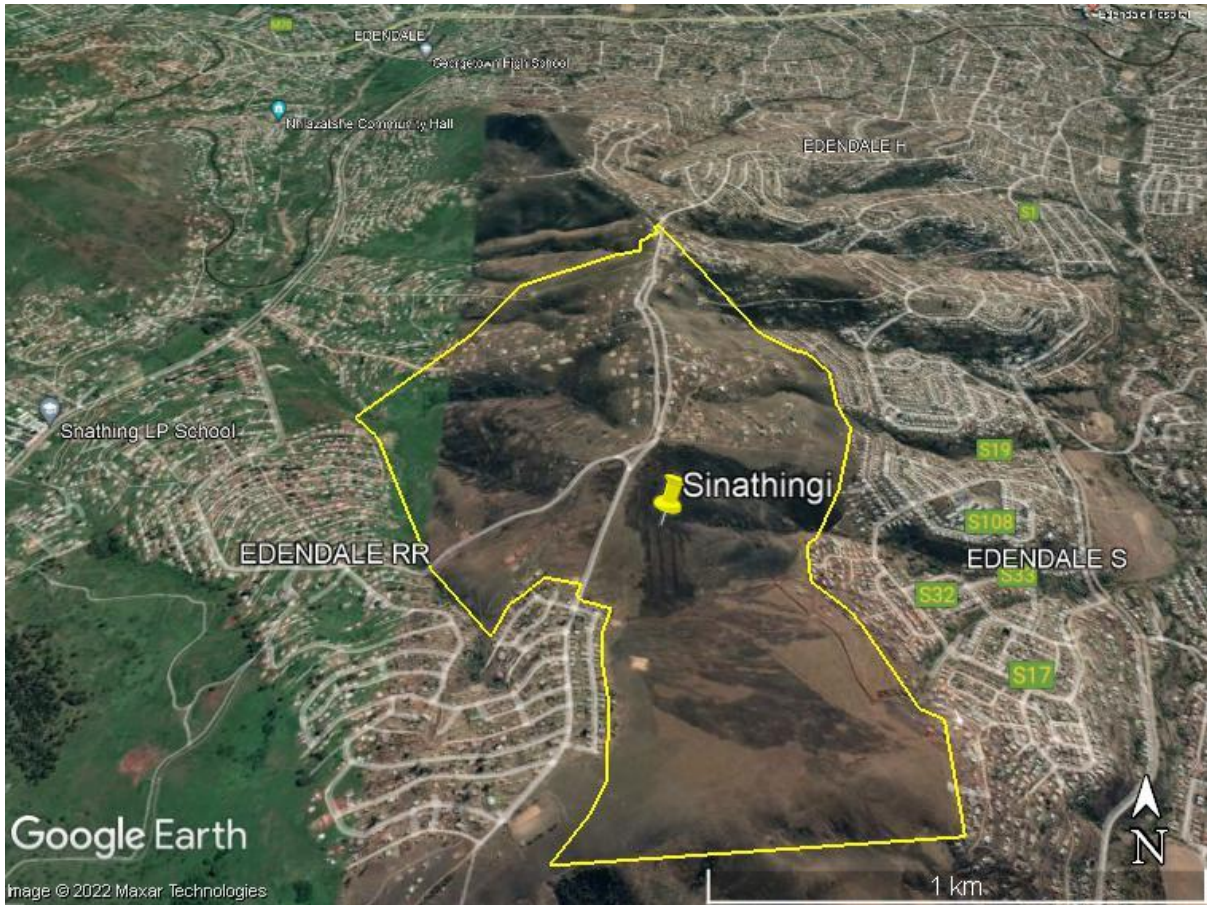
	<b>A specialist report prepared in terms of the Environmental Impact Regulations of 2017 must contain:</b>	<b>Relevant section in report</b>
ai	Details of the specialist who prepared the report,	Appendix B
aii	The expertise of that person to compile a specialist report including a curriculum vitae	Appendix B
b	A declaration that the person is independent in a form as may be specified by the competent authority	Page 1
c	An indication of the scope of, and the purpose for which, the report was prepared	Section 1
ci	An indication of the quality and age of the base data used for the specialist report: SAHRIS palaeosensitivity map accessed – date of this report	Yes
cii	A description of existing impacts on the site, cumulative impacts of the proposed development and levels of acceptable change	Section 5
d	The date and season of the site investigation and the relevance of the season to the outcome of the assessment	N/A
e	A description of the methodology adopted in preparing the report or carrying out the specialised process	Section 2
f	The specific identified sensitivity of the site related to the activity and its associated structures and infrastructure	Section 4
g	An identification of any areas to be avoided, including buffers	N/A

	<b>A specialist report prepared in terms of the Environmental Impact Regulations of 2017 must contain:</b>	<b>Relevant section in report</b>
h	A map superimposing the activity including the associated structures and infrastructure on the environmental sensitivities of the site including areas to be avoided, including buffers;	N/A
i	A description of any assumptions made and any uncertainties or gaps in knowledge;	Section 5
j	A description of the findings and potential implications of such findings on the impact of the proposed activity, including identified alternatives, on the environment	Section 4
k	Any mitigation measures for inclusion in the EMPr	Section 8, Appendix A
l	Any conditions for inclusion in the environmental authorisation	N/A
m	Any monitoring requirements for inclusion in the EMPr or environmental authorisation	Section 8, Appendix A
ni	A reasoned opinion as to whether the proposed activity or portions thereof should be authorised	Section 6
nii	If the opinion is that the proposed activity or portions thereof should be authorised, any avoidance, management and mitigation measures that should be included in the EMPr, and where applicable, the closure plan	Sections 6, 8
o	A description of any consultation process that was undertaken during the course of carrying out the study	N/A
p	A summary and copies of any comments that were received during any consultation process	N/A
q	Any other information requested by the competent authority.	N/A
2	Where a government notice gazetted by the Minister provides for any protocol or minimum information requirement to be applied to a specialist report, the requirements as indicated in such notice will apply.	N/A



**Figure 1: Google Earth map of the general area to show the relative land marks. The Sinathingí Housing project is shown by the yellow polygon.**





**Figure 2: Google Earth Map of the proposed development of housing for the Sinathing community with the area shown by the yellow outline.**

## 2. Methods and Terms of Reference

The Terms of Reference (ToR) for this study were to undertake a PIA and provide feasible management measures to comply with the requirements of SAHRA.

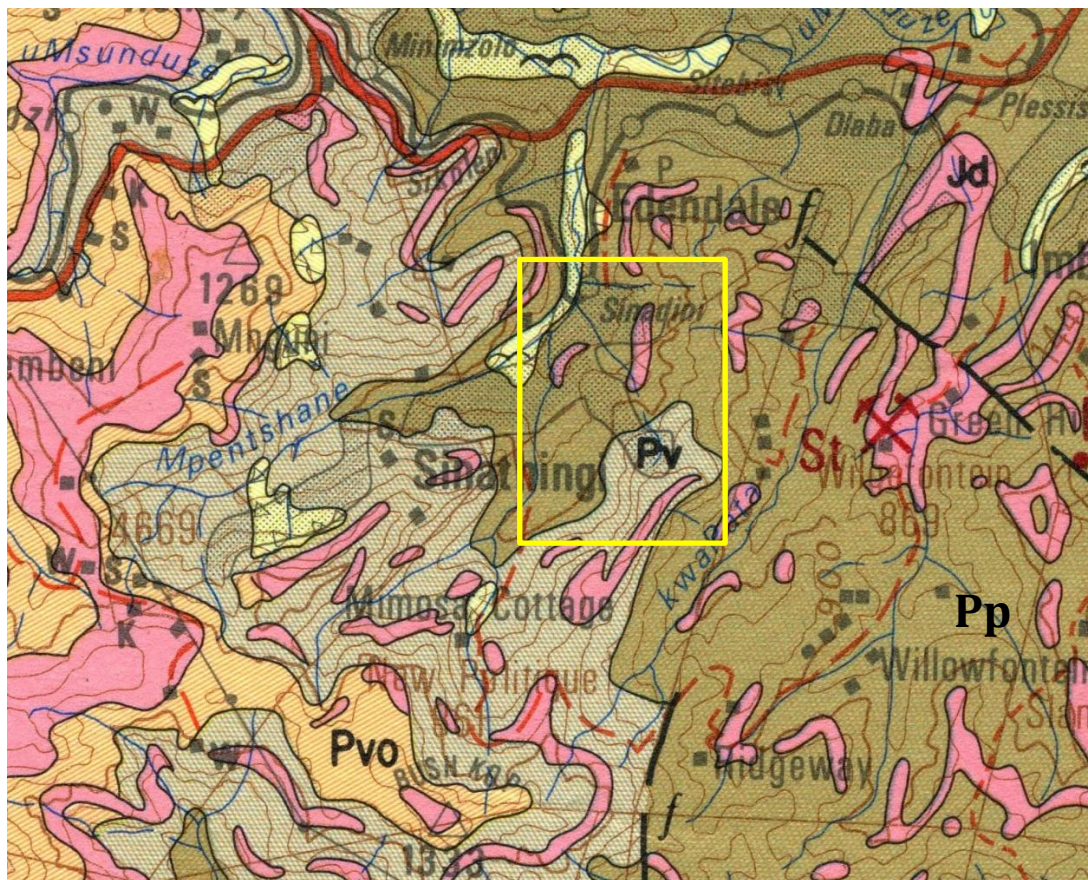
The methods employed to address the ToR included:

1. Consultation of geological maps, literature, palaeontological databases, published and unpublished records to determine the likelihood of fossils occurring in the affected areas. Sources included records housed at the Evolutionary Studies Institute at the University of the Witwatersrand and SAHRA databases;
2. Where necessary, site visits by a qualified palaeontologist to locate any fossils and assess their importance (*not applicable to this assessment*);
3. Where appropriate, collection of unique or rare fossils with the necessary permits for storage and curation at an appropriate facility (*not applicable to this assessment*); and
4. Determination of fossils' representivity or scientific importance to decide if the fossils can be destroyed or a representative sample collected (*not applicable to this assessment*).



### 3. Geology and Palaeontology

#### i. Project location and geological context



**Figure 3: Geological map of the area around the Sinathing Housing project. The location of the proposed project is indicated within the yellow outline. Abbreviations of the rock types are explained in Table 2. Map enlarged from the Geological Survey 1: 250 000 map 2930 Durban.**

Table 2: Explanation of symbols for the geological map and approximate ages (Eriksson et al., 2006. Johnson et al., 2006). SG = Supergroup; Fm = Formation; Ma = million years; grey shading = formations impacted by the project.

Symbol	Group/Formation	Lithology	Approximate Age
Q	Quaternary	Alluvium, sand, calcrete	Neogene, ca 2.5 Ma to present
Jd	Jurassic dykes	Dolerite dykes, intrusive	Jurassic, approx. 180 Ma
Pvo	Volksrust Fm, Ecca Group, Karoo SG	Fine-grained shales, mudstone	Middle Permian, upper Ecca
Pv	Vryheid Fm, Ecca Group, Karoo SG	Shales, sandstone, coal	Early Permian, Middle Ecca
Pp	Pietermaritzburg Fm, Ecca Group, Karoo SG	Grey-black fine-grained shales, mudstone	Early Permian, lower Ecca

The project lies in the south-eastern part of the Karoo Basin where the Ecca Group rocks are well exposed. Much younger alluvium and landslip rubble occurs on the hillsides and valleys.

The Karoo Supergroup rocks cover a very large proportion of South Africa and extend from the northeast (east of Pretoria) to the southwest and across to almost the KwaZulu Natal south coast. It is bounded along the southern margin by the Cape Fold Belt and along the northern margin by the much older Transvaal Supergroup rocks. Representing some 120 million years (300 – 183Ma), the Karoo Supergroup rocks have preserved a diversity of fossil plants, insects, vertebrates and invertebrates.

During the Carboniferous Period South Africa was part of the huge continental landmass known as Gondwanaland and it was positioned over the South Pole. As a result, there were several ice sheets that formed and melted, and covered most of South Africa. Gradual melting of the ice as the continental mass moved northwards and the earth warmed, formed fine-grained sediments in the large inland sea. These are the oldest rocks in the system and are exposed around the outer part of the ancient Karoo Basin, and are known as the Dwyka Group (Johnson et al., 2006).

Overlying the Dwyka Group rocks are rocks of the Ecca Group that are Early Permian in age. There are eleven formations recognised in this group but they do not all extend throughout the Karoo Basin. In the Free State and KwaZulu Natal, from the base upwards are the Pietermaritzburg Formation, Vryheid Formation and the Volksrust Formation. All of these sediments have varying proportions of sandstones, mudstones, shales and siltstones and represent shallow to deep water settings, deltas, rivers, streams and overbank depositional environments.

Overlying the Ecca Group are the rocks of the Beaufort Group, and then the Stormberg Group. Large exposures of Jurassic dolerite dykes occur throughout the area. These intruded through the Karoo sediments around 183 million years ago at about the same time as the Drakensberg basaltic eruption.

Unconformably overlying the Karoo Supergroup rocks are the considerably younger Quaternary sands, soils and alluvium.

## ii. Palaeontological context

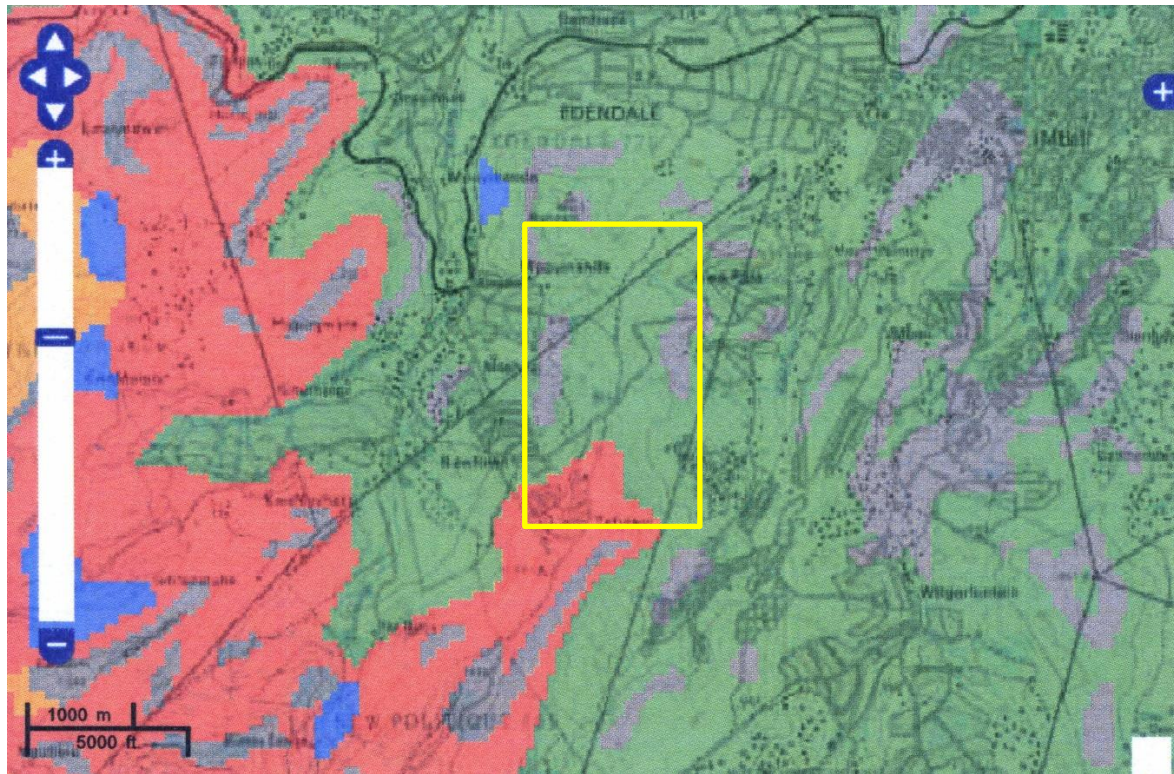
The palaeontological sensitivity of the area under consideration is presented in Figure 4. The site for development is in the non-fossiliferous Jurassic dykes and alluvium (grey and blue respectively on the map). The moderately fossiliferous Pietermaritzburg Formation is present in the southern part of the area to be developed (green). There is a small area lying on the potentially very highly fossiliferous Vryheid Formation (red).

Alluvium and dolerites do not preserve fossils. The Pietermaritzburg Formation was deposited in shallow to deep water conditions and only in the ancient shoreline facies would there be a chance of finding trace fossils such as worm burrows.

The Vryheid Formation in some parts of the basin has coal seams and associated carbonaceous shales. There are no known coal deposits this far south in the Karoo Basin



although there is an abandoned mine to the north of the project area. Vryheid Formation fossils are typical of the *Glossopteris* flora and include other plants such as lycopods, sphenophytes, ferns and early conifers (Plumstead, 1969; Anderson and Anderson, 1985). Vertebrates were not common at this time and moreover they require different conditions for preservation from those required by plants. It should be noted that the area is densely vegetation in parts or has been disturbed by human activity.



**Figure 4: SAHRIS palaeosensitivity map for the site for the proposed Sinathing housing project shown within the yellow outline. Background colours indicate the following degrees of sensitivity: red = very highly sensitive; orange/yellow = high; green = moderate; blue = low; grey = insignificant/zero.**

#### 4. Impact assessment

An assessment of the potential impacts to possible palaeontological resources considers the criteria encapsulated in Table 3:

**Table 3a: Criteria for assessing impacts**

<b>PART A: DEFINITION AND CRITERIA</b>		
<b>Criteria for ranking of the SEVERITY/NATURE of environmental impacts</b>	<b>H</b>	Substantial deterioration (death, illness or injury). Recommended level will often be violated. Vigorous community action.
	<b>M</b>	Moderate/ measurable deterioration (discomfort). Recommended level will occasionally be violated. Widespread complaints.
	<b>L</b>	Minor deterioration (nuisance or minor deterioration). Change not measurable/ will remain in the current range. Recommended level will never be violated. Sporadic complaints.

	<b>L+</b>	Minor improvement. Change not measurable/ will remain in the current range. Recommended level will never be violated. Sporadic complaints.
	<b>M+</b>	Moderate improvement. Will be within or better than the recommended level. No observed reaction.
	<b>H+</b>	Substantial improvement. Will be within or better than the recommended level. Favourable publicity.
<b>Criteria for ranking the DURATION of impacts</b>	<b>L</b>	Quickly reversible. Less than the project life. Short term
	<b>M</b>	Reversible over time. Life of the project. Medium term
	<b>H</b>	Permanent. Beyond closure. Long term.
<b>Criteria for ranking the SPATIAL SCALE of impacts</b>	<b>L</b>	Localised - Within the site boundary.
	<b>M</b>	Fairly widespread – Beyond the site boundary. Local
	<b>H</b>	Widespread – Far beyond site boundary. Regional/ national
<b>PROBABILITY (of exposure to impacts)</b>	<b>H</b>	Definite/ Continuous
	<b>M</b>	Possible/ frequent
	<b>L</b>	Unlikely/ seldom

**Table 3b: Impact Assessment**

<b>PART B: Assessment</b>		
<b>SEVERITY/NATURE</b>	<b>H</b>	-
	<b>M</b>	-
	<b>L</b>	Dolerite and alluvium do not preserve fossils; so far there are no records from the Vryheid Fm of plant or animal fossils in this site so it is very unlikely that fossils occur on the site. The impact would be negligible
	<b>L+</b>	-
	<b>M+</b>	-
	<b>H+</b>	-
	<b>DURATION</b>	<b>L</b>
<b>M</b>		-
<b>H</b>		Where manifest, the impact will be permanent.
<b>SPATIAL SCALE</b>	<b>L</b>	Since the only possible fossils within the area would be plant fossils in the shales of the Vryheid Fm, the spatial scale will be localised within the site boundary.
	<b>M</b>	-
	<b>H</b>	-
<b>PROBABILITY</b>	<b>H</b>	-
	<b>M</b>	It is extremely unlikely that any fossils would be found in the loose soils and sands that cover the area or in the dolerite. There might be fossils below the ground, therefore, a Fossil Chance Find Protocol should be added to the eventual EMPr.-
	<b>L</b>	

Based on the nature of the project, surface activities may impact upon the fossil heritage if preserved in the development footprint. The geological structures suggest that the rocks are the right age to contain fossils but these would only be below ground or in rocky outcrops, not in the soil cover. Since there is a small chance that fossils from the Vryheid Formation may be disturbed a Fossil Chance Find Protocol has been added to this report. Taking account of the defined criteria, the potential impact to fossil heritage resources is extremely low.

## 5. Assumptions and uncertainties

Based on the geology of the area and the palaeontological record as we know it, it can be assumed that the formation and layout of the dolomites, sandstones, shales and sands are typical for the country and some might contain fossil plant material. The covering sands and soils of the Quaternary period would not preserve fossils. The area is highly disturbed and any intact fossils would be underground. A surface survey would not reveal fossils. Only excavations would reveal fossils.

## 6. Recommendation

Based on experience and the lack of any previously recorded fossils from the area, it is extremely unlikely that any fossils would be preserved in the covering soils and sands of the Quaternary. There is a small chance that fossils may occur below ground in the shales of the early Permian Vryheid Formation in the southern section so a Fossil Chance Find Protocol should be added to the EMPr. If fossils are found by the developer, contractor, environmental officer, or other responsible person once excavations for amenities, roads and foundations have commenced then they should be rescued and a palaeontologist called to assess and collect a representative sample. The impact on the palaeontological heritage would be low so, as far as the palaeontology is concerned, the project should be authorised.

## 7. References

Anderson, J.M., Anderson, H.M., 1985. Palaeoflora of Southern Africa: Prodrumus of South African megafloras, Devonian to Lower Cretaceous. A.A. Balkema, Rotterdam. 423 pp.

Johnson, M.R., van Vuuren, C.J., Visser, J.N.J., Cole, D.I., Wickens, H.deV., Christie, A.D.M., Roberts, D.L., Brandl, G., 2006. Sedimentary rocks of the Karoo Supergroup. In: Johnson, M.R., Anhaeusser, C.R. and Thomas, R.J., (Eds). The Geology of South Africa. Geological Society of South Africa, Johannesburg / Council for Geoscience, Pretoria. Pp 461 – 499.

Plumstead, E.P., 1969. Three thousand million years of plant life in Africa. Geological Society of southern Africa, Annexure to Volume LXXII. 72pp + 25 plates.

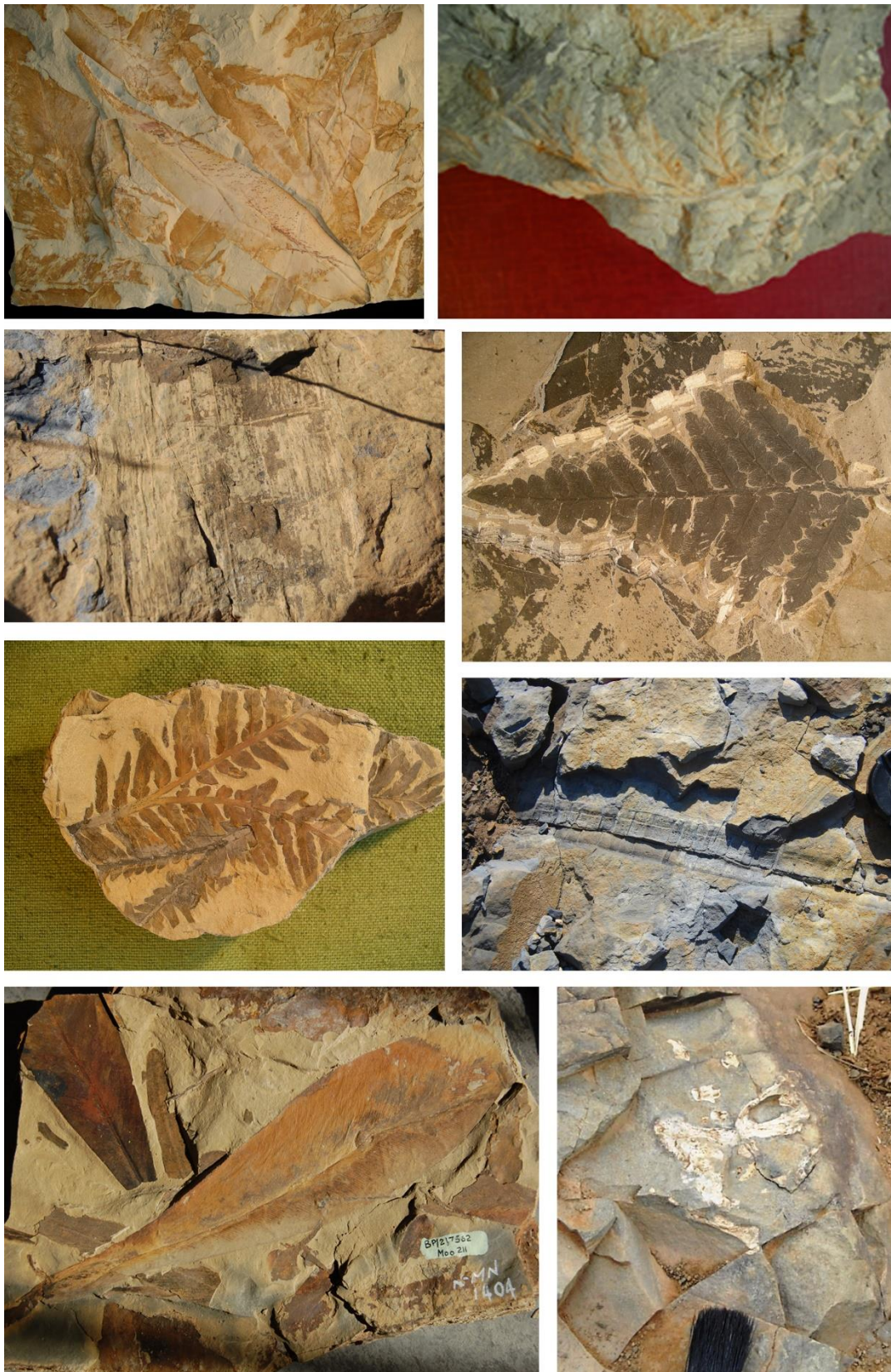


## 8. Chance Find Protocol

### **Monitoring Programme for Palaeontology – to commence once the excavations begin.**

1. The following procedure is only required if fossils are seen on the surface and when excavations commence.
2. When excavations begin the rocks and must be given a cursory inspection by the environmental officer or designated person. Any fossiliferous material (plants, insects, bone, coal) should be put aside in a suitably protected place. This way the project activities will not be interrupted.
3. Photographs of similar fossils must be provided to the developer to assist in recognizing the fossil plants, vertebrates, invertebrates or trace fossils in the shales and mudstones (for example see Figure 5). This information will be built into the EMP's training and awareness plan and procedures.
4. Photographs of the putative fossils can be sent to the palaeontologist for a preliminary assessment.
5. If there is any possible fossil material found by the developer/environmental officer then the qualified palaeontologist sub-contracted for this project, should visit the site to inspect the selected material and check the dumps where feasible.
6. Fossil plants or vertebrates that are considered to be of good quality or scientific interest by the palaeontologist must be removed, catalogued and housed in a suitable institution where they can be made available for further study. Before the fossils are removed from the site an AMAFA or SAHRA permit must be obtained. Annual reports must be submitted to Amafa and SAHRA as required by the relevant permits.
7. If no good fossil material is recovered then no site inspections by the palaeontologist will be necessary. A final report by the palaeontologist must be sent to AMAFA and SAHRA once the project has been completed and only if there are fossils.
8. If no fossils are found and the excavations have finished then no further monitoring is required.

## 9. Appendix A – Examples of fossils from the Vryheid Formation



**Figure 5: Photographs of fossil plants from the Vryheid Formation**

## 10. Appendix B – Details of specialist

### **Curriculum vitae (short) - Marion Bamford PhD January 2022**

#### **I) Personal details**

Surname : **Bamford**  
First names : **Marion Kathleen**  
Present employment: Professor; Director of the Evolutionary Studies Institute.  
Member Management Committee of the NRF/DST Centre of Excellence Palaeosciences, University of the Witwatersrand, Johannesburg, South Africa  
Telephone : +27 11 717 6690  
Fax : +27 11 717 6694  
Cell : 082 555 6937  
E-mail : [marion.bamford@wits.ac.za](mailto:marion.bamford@wits.ac.za) ;  
[marionbamford12@gmail.com](mailto:marionbamford12@gmail.com)

#### **ii) Academic qualifications**

Tertiary Education: All at the University of the Witwatersrand:  
1980-1982: BSc, majors in Botany and Microbiology. Graduated April 1983.  
1983: BSc Honours, Botany and Palaeobotany. Graduated April 1984.  
1984-1986: MSc in Palaeobotany. Graduated with Distinction, November 1986.  
1986-1989: PhD in Palaeobotany. Graduated in June 1990.  
NRF Rating: C-2 (1999-2004); B-3 (2005-2015); B-2 (2016-2020); B-1 (2021-2026)

#### **iii) Professional qualifications**

*Wood Anatomy Training (overseas as nothing was available in South Africa):*  
1994 - Service d'Anatomie des Bois, Musée Royal de l'Afrique Centrale, Tervuren, Belgium, by Roger Dechamps  
1997 - Université Pierre et Marie Curie, Paris, France, by Dr Jean-Claude Koeniguer  
1997 - Université Claude Bernard, Lyon, France by Prof Georges Barale, Dr Jean-Pierre Gros, and Dr Marc Philippe

#### **iv) Membership of professional bodies/associations**

Palaeontological Society of Southern Africa  
Royal Society of Southern Africa - Fellow: 2006 onwards  
Academy of Sciences of South Africa - Member: Oct 2014 onwards  
International Association of Wood Anatomists - First enrolled: January 1991  
International Organization of Palaeobotany – 1993+  
Botanical Society of South Africa  
South African Committee on Stratigraphy – Biostratigraphy - 1997 - 2016  
SASQUA (South African Society for Quaternary Research) – 1997+  
PAGES - 2008 –onwards: South African representative

ROCEEH / WAVE – 2008+  
INQUA – PALCOMM – 2011+onwards

### **vii) Supervision of Higher Degrees**

All at Wits University

Degree	Graduated/completed	Current
Honours	13	0
Masters	11	3
PhD	11	6
Postdoctoral fellows	15	1

### **viii) Undergraduate teaching**

Geology II – Palaeobotany GEOL2008 – average 65 students per year  
Biology III – Palaeobotany APES3029 – average 45 students per year  
Honours – Evolution of Terrestrial Ecosystems; African Plio-Pleistocene Palaeoecology;  
Micropalaeontology – average 12-20 students per year.

### **ix) Editing and reviewing**

Editor: *Palaeontologia africana*: 2003 to 2013; 2014 – Assistant editor  
Guest Editor: *Quaternary International*: 2005 volume  
Member of Board of Review: *Review of Palaeobotany and Palynology*: 2010 –  
Associate Editor *Open Science UK*: 2021 -  
Review of manuscripts for ISI-listed journals: 30 local and international journals  
Reviewing of funding applications for NRF, PAST, NWO, SIDA, National Geographic,  
Leakey Foundation

### **x) Palaeontological Impact Assessments**

Selected from the past five years only – list not complete:

- Mala Mala 2017 for Henwood
- Modimolle 2017 for Green Vision
- Klippoortjie and Finaalspan 2017 for Delta BEC
- Ledjadja borrow pits 2018 for Digby Wells
- Lungile poultry farm 2018 for CTS
- Olienhout Dam 2018 for JP Celliers
- Isondlo and Kwasobabili 2018 for GCS
- Kanakies Gypsum 2018 for Cabanga
- Nababeep Copper mine 2018
- Glencore-Mbali pipeline 2018 for Digby Wells
- Remhoogte PR 2019 for A&HAS
- Bospoort Agriculture 2019 for Kudzala
- Overlooked Quarry 2019 for Cabanga
- Richards Bay Powerline 2019 for NGT
- Eilandia dam 2019 for ACO
- Eastlands Residential 2019 for HCAC
- Fairview MR 2019 for Cabanga
- Graspan project 2019 for HCAC
- Lielifontein N&D 2019 for EnviroPro
- Skeerpoort Farm Mast 2020 for HCAC

- Vulindlela Eco village 2020 for 1World
- KwaZamakhule Township 2020 for Kudzala
- Sunset Copper 2020 for Digby Wells
- McCarthy-Salene 2020 for Prescali
- VLNR Lodge 2020 for HCAC
- Madadeni mixed use 2020 for EnviroPro
- Frankfort-Windfield Eskom Powerline 2020 for 1World
- Beaufort West PV Facility 2021 for ACO Associates
- Copper Sunset MR 2021 for Digby Wells
- Sannaspos PV facility 2021 for CTS Heritage
- Smithfield-Rouxville-Zastron PL 2021 for TheroServe

#### **xi) Research Output**

Publications by M K Bamford up to January 2022 peer-reviewed journals or scholarly books: over 160 articles published; 5 submitted/in press; 10 book chapters.

Scopus h-index = 30; Google scholar h-index = 35; -i10-index = 92

Conferences: numerous presentations at local and international conferences.