

**Palaeontological Impact Assessment for the proposed  
Magalies River Lodge, Magaliesberg,  
Northwest Province**

**Desktop Study (Phase 1)**

**For**

**HCAC**

**09 October 2020**

**Prof Marion Bamford**

Palaeobotanist

P Bag 652, WITS 2050

Johannesburg, South Africa

[Marion.bamford@wits.ac.za](mailto:Marion.bamford@wits.ac.za)

## **Expertise of Specialist**

The Palaeontologist Consultant: Prof Marion Bamford  
Qualifications: PhD (Wits Univ, 1990); FRSSAf, ASSAf  
Experience: 31 years research; 23 years PIA studies

## **Declaration of Independence**

This report has been compiled by Professor Marion Bamford, of the University of the Witwatersrand, sub-contracted by Heritage Contracts and Archaeological Consulting, Modimolle, South Africa. The views expressed in this report are entirely those of the author and no other interest was displayed during the decision making process for the Project.

Specialist: Prof Marion Bamford

Signature: 

## **Executive Summary**

A palaeontological Impact Assessment was requested for the development of Magalies River Lodge just north of Magaliesberg town, Northwest Province. To comply with the South African Heritage Resources Agency (SAHRA) in terms of Section 38(8) of the National Heritage Resources Act, 1999 (Act No. 25 of 1999) (NHRA), a desktop Palaeontological Impact Assessment (PIA) was completed for the proposed development..

The proposed site lies on the quartzites of the Daspoort Formation (Pretoria Group, Transvaal Supergroup). These rocks are older than the evolution of body fossils but trace fossils such as mat related structures formed by microbes on sands have been recorded from one site to the east of Pretoria. None have been reported from here but a Fossil Chance Find Protocol should be added to the EMPr. Based on this information it is recommended that no palaeontological site visit is required unless trace fossils are found once excavations commence.

## Table of Contents

Expertise of Specialist.....	1
Declaration of Independence.....	1
1. Background.....	4
2. Methods and Terms of Reference .....	5
3i. Project location and geological context.....	6
3ii. Palaeontological context .....	8
4. Impact assessment .....	8
5. Assumptions and uncertainties.....	10
6. Recommendation.....	10
7. References.....	10
8. Chance Find Protocol .....	11
Appendix A (examples of fossils) .....	12
Appendix B (short CV of specialist) .....	13

# 1. Background

The owners of the property have been given permission to develop a hospitality feature just north of the town of Magaliesburg, called the Magalies River Lodge. This includes a lodge, parking area, conference centre and entertainment facilities (Figure 1).

A Palaeontological Impact Assessment was requested for the Magalies River Lodge project. To comply with the South African Heritage Resources Agency (SAHRA) in terms of Section 38(8) of the National Heritage Resources Act, 1999 (Act No. 25 of 1999) (NHRA), a desktop Palaeontological Impact Assessment (PIA) was completed for the proposed development and is presented herein.

Table 1: Specialist report requirements in terms of Appendix 6 of the EIA Regulations (amended 2017)

	<b>A specialist report prepared in terms of the Environmental Impact Regulations of 2017 must contain:</b>	<b>Relevant section in report</b>
ai	Details of the specialist who prepared the report	Appendix B
aii	The expertise of that person to compile a specialist report including a curriculum vitae	Appendix B
b	A declaration that the person is independent in a form as may be specified by the competent authority	Page 1
c	An indication of the scope of, and the purpose for which, the report was prepared	Section 1
ci	An indication of the quality and age of the base data used for the specialist report: SAHRIS palaeosensitivity map accessed – date of this report	Yes
cii	A description of existing impacts on the site, cumulative impacts of the proposed development and levels of acceptable change	Section 5
d	The date and season of the site investigation and the relevance of the season to the outcome of the assessment	N/A
e	A description of the methodology adopted in preparing the report or carrying out the specialised process	Section 2
f	The specific identified sensitivity of the site related to the activity and its associated structures and infrastructure	Section 4
g	An identification of any areas to be avoided, including buffers	N/A
h	A map superimposing the activity including the associated structures and infrastructure on the environmental sensitivities of the site including areas to be avoided, including buffers;	N/A
i	A description of any assumptions made and any uncertainties or gaps in knowledge;	Section 5
j	A description of the findings and potential implications of such findings on the impact of the proposed activity, including identified alternatives, on the environment	Section 4

k	Any mitigation measures for inclusion in the EMPr	Section 7, Appendix A
l	Any conditions for inclusion in the environmental authorisation	N/A
m	Any monitoring requirements for inclusion in the EMPr or environmental authorisation	Section 7, Appendix A
ni	A reasoned opinion as to whether the proposed activity or portions thereof should be authorised	N/A
nii	If the opinion is that the proposed activity or portions thereof should be authorised, any avoidance, management and mitigation measures that should be included in the EMPr, and where applicable, the closure plan	N/A
o	A description of any consultation process that was undertaken during the course of carrying out the study	N/A
p	A summary and copies if any comments that were received during any consultation process	N/A
q	Any other information requested by the competent authority.	N/A



Figure 1: Google Earth map of the proposed development of Magalies River Lodge, north of Magaliesburg town with the sections and structures as indicated. Map supplied by HCAC .

## 2. Methods and Terms of Reference

The Terms of Reference (ToR) for this study were to undertake a PIA and provide feasible management measures to comply with the requirements of SAHRA.

The methods employed to address the ToR included:

1. Consultation of geological maps, literature, palaeontological databases, published and unpublished records to determine the likelihood of fossils occurring in the affected areas. Sources included records housed at the Evolutionary Studies Institute at the University of the Witwatersrand and SAHRA databases;
2. Where necessary, site visits by a qualified palaeontologist to locate any fossils and assess their importance (*not applicable to this assessment*);
3. Where appropriate, collection of unique or rare fossils with the necessary permits for storage and curation at an appropriate facility (*not applicable to this assessment*); and
4. Determination of fossils' representivity or scientific importance to decide if the fossils can be destroyed or a representative sample collected (*not applicable to this assessment*).

### 3. Geology and Palaeontology

#### i. Project location and geological context



Figure 2: Geological map of the area around the Magalies River Lodge site. The location of the proposed project is indicated with the arrow. Abbreviations of the rock types are explained in Table 2. Map enlarged from the Geological Survey 1: 250 000 map 2526 Rustenburg.

Table 2: Explanation of symbols for the geological map and approximate ages (Eriksson et al., 2006. Zeh et al., 2020). SG = Supergroup; Fm = Formation; Ma = million years; grey shading = formations impacted by the project.

Symbol	Group/Formation	Lithology	Approximate Age
Q	Quaternary	Alluvium, sand, calcrete	Neogene, ca 2.5 Ma to present
di	Diabase	Diabase (volcanic rock)	
Vdq	Daspoort Fm, Pretoria Group, Transvaal SG	quartzite	<2240 Ma
Vst	Strubenkop Fm, Pretoria Group, Transvaal SG	Slate, shale	Ca 2224 Ma
Vha	Hekpoort Fm, Pretoria Group, Transvaal SG	Andesite, basalt, tuff, agglomerate	Ca 2224 Ma

The Late Archaean to early Proterozoic Transvaal Supergroup is preserved in three structural basins on the Kaapvaal Craton (Eriksson et al., 2006). In South Africa are the Transvaal and Griqualand West Basins, and the Kanye Basin is in southern Botswana. The Griqualand West Basin is divided into the Ghaap Plateau sub-basin and the Prieska sub-basin. Sediments in the lower parts of the basins are very similar but they differ somewhat higher up the sequences. Several tectonic events have greatly deformed the south western portion of the Griqualand West Basin between the two sub-basins

The Transvaal Supergroup comprises one of world's earliest carbonate platform successions (Beukes, 1987; Eriksson et al., 2006; Zeh et al., 2020). In some areas there are well preserved stromatolites that are evidence of the photosynthetic activity of blue green bacteria and green algae. These microbes formed colonies in warm, shallow seas.

In the Transvaal Basin the Transvaal Supergroup is divided into two Groups, the lower Chuniespoort Group and the upper Pretoria Group (with ten formations; Eriksson et al., 2006). The Chuniespoort Group is divided into the basal Malmani Subgroup that comprises dolomites and limestones and is divided into five formations based on chert content, stromatolitic morphology, intercalated shales and erosion surfaces. The top of the Chuniespoort Group has the Penge Formation and the Deutschland Formation.

The Hekpoort, Dwaalheuwel, Strubenkop and Daspoort Formations form a sequence as the middle part of the Pretoria Group, Transvaal Supergroup, and represent rocks that are over 2060 million years old. The Hekpoort Formation is a massive lava deposit and is overlain by the Dwaalheuwel conglomerates, siltstone and sandstone (not present here). A hiatus separates the Strubenkop Formation slates and shales from the overlying quartzites of the Daspoort Formation.

The Transvaal sequence has been interpreted as three major cycles of basin infill and tectonic activity with the first deep basin sediments forming the Chuniespoort Group, the second cycle deposited the lower Pretoria Group, and the sediments in this area are from the interim lowstand that preceded the third cycle. These sediments were deposited in shallow lacustrine, alluvial fan and braided stream environments (Eriksson et al., 2012). Transvaal Supergroup rocks in the Transvaal Basin were intruded by the Bushveld Complex at around 2060 million year ago (Eriksson et al. 2006; 2055Ma in Zeh et al., 2020), with the Magaliesberg Formation of the Pretoria Group forming the floor rocks in most areas (Eriksson et al., 2006).



## ii. Palaeontological context

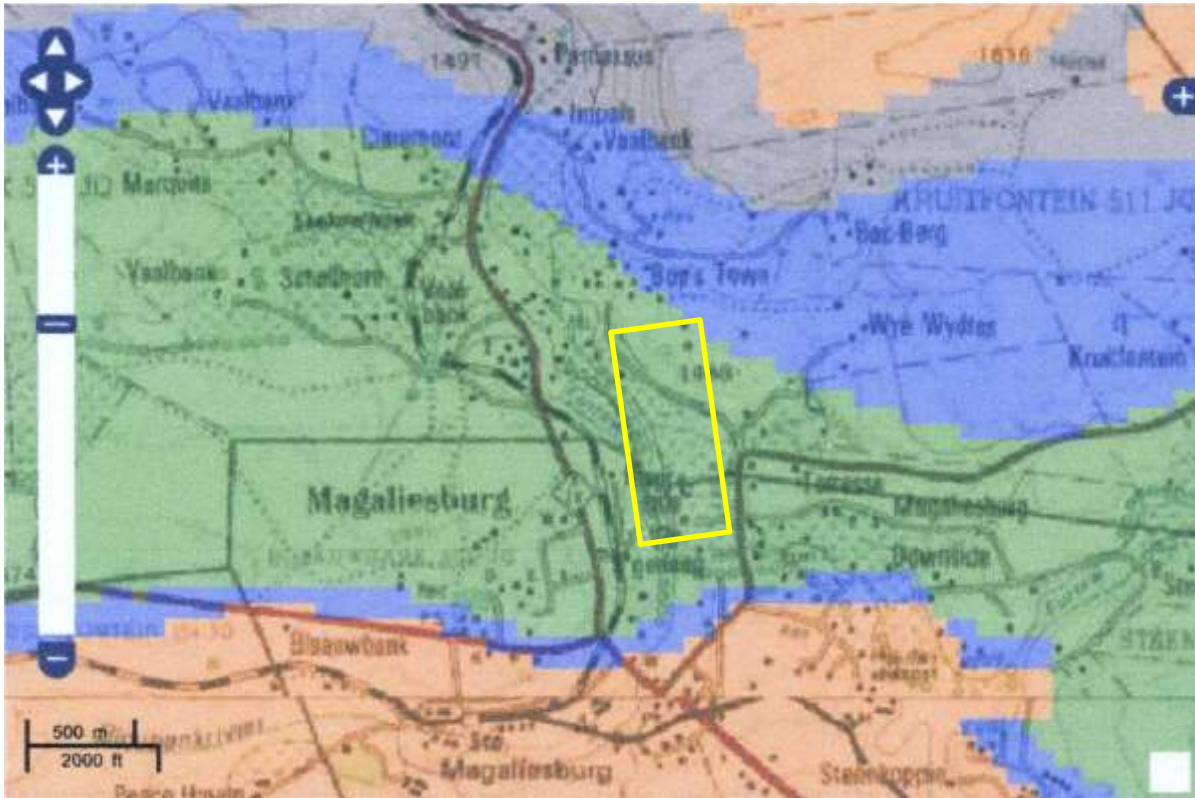


Figure 3: SAHRIS palaeosensitivity map for the site for the Magalies River Lodge shown within the yellow rectangle. Background colours indicate the following degrees of sensitivity: red = very highly sensitive; orange/yellow = high; green = moderate; blue = low; grey = insignificant/zero.

The palaeontological sensitivity of the area under consideration is presented in Figure 3 with the green colour indicating that the site is moderately sensitive for fossils. This applies to the Daspoort Formation (Figure 2; Table 2). Mat related structures (MRS) have been found in the Daspoort Formation at one site about 50km to the east of Pretoria (Eriksson et al., 2012) but they are much more common in the Magaliesberg Formation. MRS are one of a number of terms used to describe a number of trace fossils formed in fluvial, lacustrine, coastal and tidal settings where microbes (bacteria, algae) have formed a film or similar matter that cements the stratum, commonly sand (Noffke et al, 2006; Eriksson et al., 2012; see Figure 4 and 5 for examples).

## 4. Impact assessment

An assessment of the potential impacts to possible palaeontological resources considers the criteria encapsulated in Table 3:

**TABLE 3A: CRITERIA FOR ASSESSING IMPACTS**

<b>PART A: DEFINITION AND CRITERIA</b>		
<b>Criteria for ranking of the SEVERITY/NATURE of environmental impacts</b>	<b>H</b>	Substantial deterioration (death, illness or injury). Recommended level will often be violated. Vigorous community action.
	<b>M</b>	Moderate/ measurable deterioration (discomfort). Recommended level will occasionally be violated. Widespread complaints.
	<b>L</b>	Minor deterioration (nuisance or minor deterioration). Change not measurable/ will remain in the current range. Recommended level will never be violated. Sporadic complaints.
	<b>L+</b>	Minor improvement. Change not measurable/ will remain in the current range. Recommended level will never be violated. Sporadic complaints.
	<b>M+</b>	Moderate improvement. Will be within or better than the recommended level. No observed reaction.
	<b>H+</b>	Substantial improvement. Will be within or better than the recommended level. Favourable publicity.
<b>Criteria for ranking the DURATION of impacts</b>	<b>L</b>	Quickly reversible. Less than the project life. Short term
	<b>M</b>	Reversible over time. Life of the project. Medium term
	<b>H</b>	Permanent. Beyond closure. Long term.
<b>Criteria for ranking the SPATIAL SCALE of impacts</b>	<b>L</b>	Localised - Within the site boundary.
	<b>M</b>	Fairly widespread – Beyond the site boundary. Local
	<b>H</b>	Widespread – Far beyond site boundary. Regional/ national
<b>PROBABILITY (of exposure to impacts)</b>	<b>H</b>	Definite/ Continuous
	<b>M</b>	Possible/ frequent
	<b>L</b>	Unlikely/ seldom

**TABLE 3B: IMPACT ASSESSMENT**

<b>PART B: ASSESSMENT</b>		
<b>SEVERITY/NATURE</b>	<b>H</b>	-
	<b>M</b>	-
	<b>L</b>	There are rare occurrences of trace fossils, so-called mat related features (MRS) in the Daspoort Fm. The impact would be very unlikely.
	<b>L+</b>	-
	<b>M+</b>	-
	<b>H+</b>	-
<b>DURATION</b>	<b>L</b>	-
	<b>M</b>	-
	<b>H</b>	Where manifest, the impact will be permanent.
<b>SPATIAL SCALE</b>	<b>L</b>	Since only the possible fossils within the area would be trace fossils such as mat related structures in the Daspoort Fm, the spatial scale will be localised within the site boundary.
	<b>M</b>	-
	<b>H</b>	-
<b>PROBABILITY</b>	<b>H</b>	-
	<b>M</b>	-
	<b>L</b>	MRS are rare and difficult to recognise but might occur in the Daspoort Fm. Therefore, a Fossil Chance Find Protocol should be added to the eventual EMPr.

Based on the nature of the project, surface activities may impact upon the fossil heritage if preserved in the development footprint. The geological structures suggest that the rocks are much too old to contain body fossils (>2240 Ma) but there might be trace fossils such as mat

related features in the quartzites of the Daspoort Formation. Since there is an extremely small chance that trace fossils occur, a Fossil Chance Find Protocol has been added to this report. Taking account of the defined criteria, the potential impact to fossil heritage resources is extremely low.

## 5. Assumptions and uncertainties

Based on the geology of the area and the palaeontological record as we know it, it can be assumed that the formation and layout of the dolomites, sandstones, shales and sands are typical for the country and do not contain fossil plant, insect, invertebrate and vertebrate material because they are too old. Trace fossils have been recorded from one locality in the Daspoort Formation (Pretoria Group, Transvaal Supergroup). The surface soils and sands of the Quaternary period would not preserve fossils.

## 6. Recommendation

Based on experience and the lack of any previously recorded fossils from the area, it is extremely unlikely that any fossils would be preserved in the area. However, since trace fossils such as mat related features have been found in another site in the Daspoort Formation, there is a very small chance that fossils may occur here. Therefore, a Fossil Chance Find Protocol should be added to the EMPr: if fossils are found once drilling or excavations have commenced then they should be rescued and a palaeontologist called to assess and collect a representative sample.

## 7. References

Beukes, N.J., 1987. Facies relations, depositional environments, and diagenesis in a major early Proterozoic stromatolitic carbonate platform to basinal sequence, Campbell Rand Subgroup, Transvaal Supergroup, southern Africa. *Sedimentary Geology* 54, 1-46.

Bosch, P., Eriksson, P., 2017. A note on two occurrences of inferred microbial mat features preserved in the c. 2.1 Ga Magaliesberg Formation (Pretoria Group, Transvaal Supergroup) sandstones, near Pretoria, South Africa. *South African Journal of Geology* 111, 251-262.

Eriksson, P.G., Altermann, W., Hartzler, F.J., 2006. The Transvaal Supergroup and its precursors. In: Johnson, M.R., Anhaeusser, C.R., Thomas, R.J. (Eds.), *The Geology of South Africa*. Geological Society of South Africa, Johannesburg and Council for Geoscience, Pretoria, pp. 237–260.

Eriksson, P.G., Bartman, R., Catuneanu, O., Mazumder, R., Lenhardt, N., 2012. A case study of microbial mats-related features in coastal epeiric sandstones from the Palaeoproterozoic

Pretoria Group, Transvaal Supergroup, Kaapvaal craton, South Africa; the effect of preservation (reflecting sequence stratigraphic models) on the relationship between mat features and inferred palaeoenvironment. *Sedimentary Geology* 263, 67-75.

Noffke, N., Eriksson, K.A., Hazen, R.M., Simpson, E.L. 2006. A new window into Early Archean life: Microbial mats in Earth's oldest siliciclastic tidal deposits (3.2 Ga Moodies Group, South Africa). *Geology* 34, 253–256.

Plumstead, E.P., 1969. Three thousand million years of plant life in Africa. Geological Society of southern Africa, Annexure to Volume LXXII. 72pp + 25 plates.

Zeh, A., Wilson, A.H., Gerdes, A., 2020. Zircon U-Pb-Hf isotope systematics of Transvaal Supergroup – Constraints for the geodynamic evolution of the Kaapvaal Craton and its hinterland between 2.65 and 2.06 Ga. *Precambrian Research* 345, 105760.  
<https://doi.org/10.1016/j.precamres.2020.105760>

## 8. Chance Find Protocol

**Monitoring Programme for Palaeontology – to commence once the excavations / drilling activities begin.**

1. The following procedure is only required if fossils are seen on the surface and when drilling/excavations commence.
2. When excavations begin the rocks and must be given a cursory inspection by the environmental officer or designated person. Any fossiliferous material (mat related structures, plants, insects, bone) should be put aside in a suitably protected place. This way the project activities will not be interrupted.
3. Photographs of similar fossils must be provided to the developer to assist in recognizing the fossil plants in the shales and mudstones (for example see Figure 4, 5). This information will be built into the EMP's training and awareness plan and procedures.
4. Photographs of the putative fossils can be sent to the palaeontologist for a preliminary assessment.
5. If there is any possible fossil material found by the developer/environmental officer then the qualified palaeontologist sub-contracted for this project, should visit the site to inspect the selected material and check the dumps where feasible.
6. Fossil plants or vertebrates that are considered to be of good quality or scientific interest by the palaeontologist must be removed, catalogued and housed in a suitable institution where they can be made available for further study. Before the fossils are removed from the site a SAHRA permit must be obtained. Annual reports must be submitted to SAHRA as required by the relevant permits.
7. If no good fossil material is recovered then no site inspections by the palaeontologist will be necessary. A final report by the palaeontologist must be sent to SAHRA once the project has been completed and only if there are fossils.
8. If no fossils are found and the excavations have finished then no further monitoring is required.

**Appendix A – Examples of trace fossils: mat related structures.**

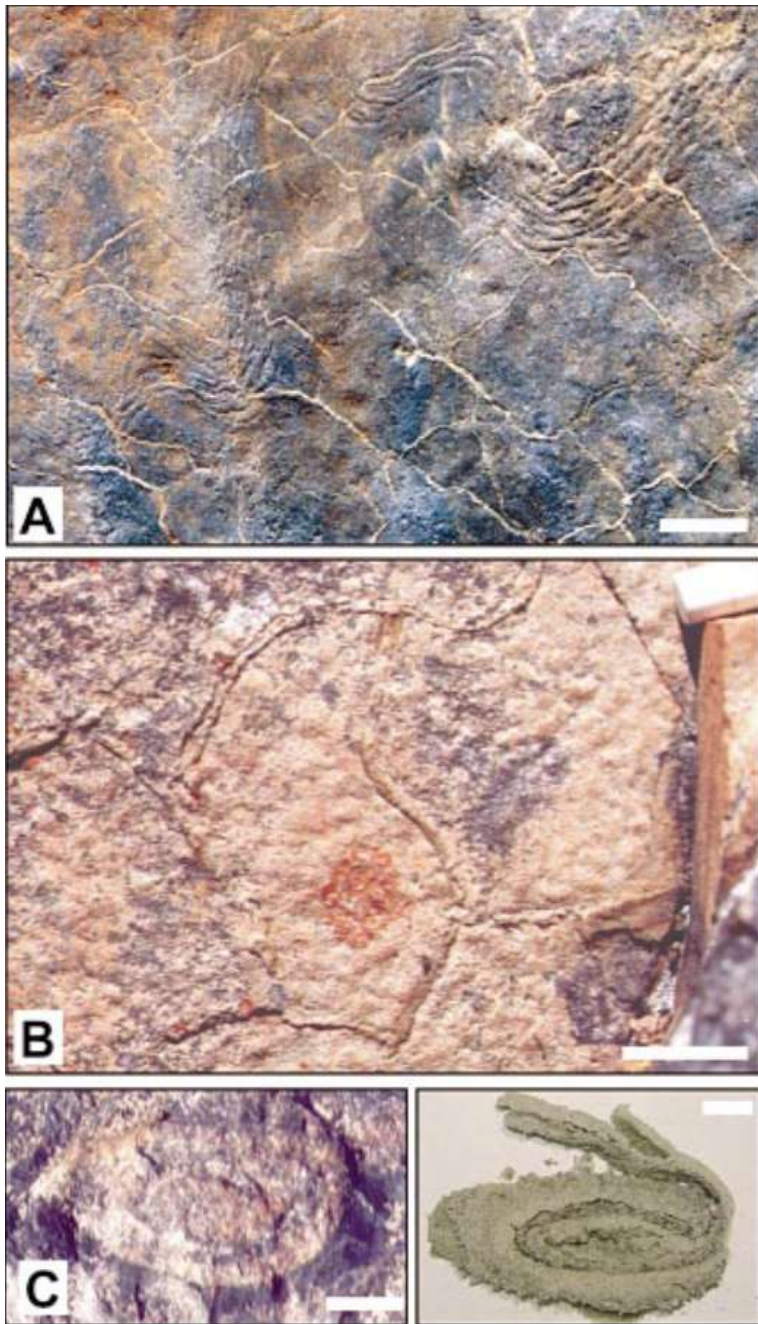


Figure 4: Microbially Induced Structures, from Nofke et al., (2006). A- wrinkle structure; b – desiccation cracks; c - rollup structures.

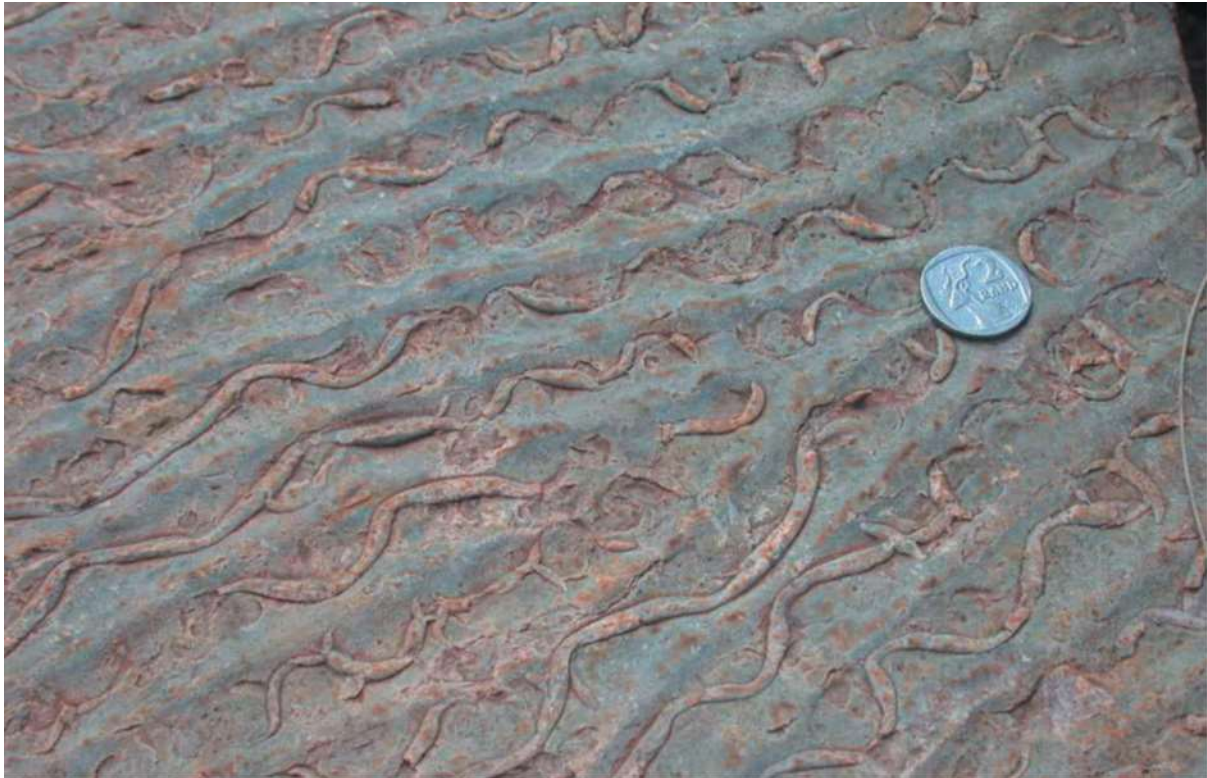


Figure 5: Vermiform trace fossil *Manchuriophycus* from a bedding plane in the Magaliesberg Formation east of Pretoria. Figure taken from Bosch and Eriksson (2017; Fig 7).

## Appendix B – Details of specialist

### Curriculum vitae (short) - Marion Bamford PhD April 2020

#### I) Personal details

Surname : **Bamford**  
First names : **Marion Kathleen**  
Present employment : Professor; Director of the Evolutionary Studies Institute.  
Member Management Committee of the NRF/DST Centre of Excellence Palaeosciences, University of the Witwatersrand, Johannesburg, South Africa-  
Telephone : +27 11 717 6690  
Fax : +27 11 717 6694  
Cell : 082 555 6937  
E-mail : [marion.bamford@wits.ac.za](mailto:marion.bamford@wits.ac.za) ; [marionbamford12@gmail.com](mailto:marionbamford12@gmail.com)

## ii) Academic qualifications

Tertiary Education: All at the University of the Witwatersrand:

1980-1982: BSc, majors in Botany and Microbiology. Graduated April 1983.

1983: BSc Honours, Botany and Palaeobotany. Graduated April 1984.

1984-1986: MSc in Palaeobotany. Graduated with Distinction, November 1986.

1986-1989: PhD in Palaeobotany. Graduated in June 1990.

## iii) Professional qualifications

*Wood Anatomy Training (overseas as nothing was available in South Africa):*

1994 - Service d'Anatomie des Bois, Musée Royal de l'Afrique Centrale, Tervuren, Belgium, by Roger Dechamps

1997 - Université Pierre et Marie Curie, Paris, France, by Dr Jean-Claude Koeniguer

1997 - Université Claude Bernard, Lyon, France by Prof Georges Barale, Dr Jean-Pierre Gros, and Dr Marc Philippe

## iv) Membership of professional bodies/associations

Palaeontological Society of Southern Africa

Royal Society of Southern Africa - Fellow: 2006 onwards

Academy of Sciences of South Africa - Member: Oct 2014 onwards

International Association of Wood Anatomists - First enrolled: January 1991

International Organization of Palaeobotany – 1993+

Botanical Society of South Africa

South African Committee on Stratigraphy – Biostratigraphy - 1997 - 2016

SASQUA (South African Society for Quaternary Research) – 1997+

PAGES - 2008 –onwards: South African representative

ROCEEH / WAVE – 2008+

INQUA – PALCOMM – 2011+onwards

## vii) Supervision of Higher Degrees

All at Wits University

Degree	Graduated/completed	Current
Honours	9	2
Masters	9	5
PhD	11	5
Postdoctoral fellows	10	4

## viii) Undergraduate teaching

Geology II – Palaeobotany GEOL2008 – average 65 students per year

Biology III – Palaeobotany APES3029 – average 25 students per year

Honours – Evolution of Terrestrial Ecosystems; African Plio-Pleistocene Palaeoecology; Micropalaeontology – average 2-8 students per year.

#### **ix) Editing and reviewing**

Editor: *Palaeontologia africana*: 2003 to 2013; 2014 – Assistant editor

Guest Editor: *Quaternary International*: 2005 volume

Member of Board of Review: *Review of Palaeobotany and Palynology*: 2010 –  
*Cretaceous Research*: 2014 –

*Journal of African Earth Sciences*: 2020 -

Review of manuscripts for ISI-listed journals: 25 local and international journals

#### **x) Palaeontological Impact Assessments**

Selected – list not complete:

- Thukela Biosphere Conservancy 1996; 2002 for DWAF
- Vioolsdrift 2007 for Xibula Exploration
- Rietfontein 2009 for Zitholele Consulting
- Bloeddrift-Baken 2010 for TransHex
- New Kleinfontein Gold Mine 2012 for Prime Resources (Pty) Ltd.
- Thabazimbi Iron Cave 2012 for Professional Grave Solutions (Pty) Ltd
- Delmas 2013 for Jones and Wagener
- Klipfontein 2013 for Jones and Wagener
- Platinum mine 2013 for Lonmin
- Syferfontein 2014 for Digby Wells
- Canyon Springs 2014 for Prime Resources
- Kimberley Eskom 2014 for Landscape Dynamics
- Yzermyne 2014 for Digby Wells
- Matimba 2015 for Royal HaskoningDV
- Commissiekraal 2015 for SLR
- Harmony PV 2015 for Savannah Environmental
- Glencore-Tweefontein 2015 for Digby Wells
- Umkomazi 2015 for JLB Consulting
- Ixia coal 2016 for Digby Wells
- Lambda Eskom for Digby Wells
- Alexander Scoping for SLR
- Perseus-Kronos-Aries Eskom 2016 for NGT
- Mala Mala 2017 for Henwood
- Modimolle 2017 for Green Vision
- Klipoortjie and Finaalspan 2017 for Delta BEC
- Ledjadja borrow pits 2018 for Digby Wells
- Lungile poultry farm 2018 for CTS
- Olienhout Dam 2018 for JP Celliers
- Isondlo and Kwasobabili 2018 for GCS
- Kanakies Gypsum 2018 for Cabanga



- Nababeep Copper mine 2018
- Glencore-Mbali pipeline 2018 for Digby Wells
- Remhoogte PR 2019 for A&HAS
- Bospoort Agriculture 2019 for Kudzala
- Overlooked Quarry 2019 for Cabanga
- Richards Bay Powerline 2019 for NGT
- Eilandia dam 2019 for ACO
- Eastlands Residential 2019 for HCAC
- Fairview MR 2019 for Cabanga
- Graspan project 2019 for HCAC
- Lieliefontein N&D 2019 for Enviropro
- Skeerpoort Farm Mast 2020 for HCAC
- Vulindlela Eco village 2020 for 1World
- KwaZamakhule Township 2020 for Kudzala
- Sunset Copper 2020 for Digby Wells
- 

## **xi) Research Output**

Publications by M K Bamford up to December 2019 peer-reviewed journals or scholarly books: over 140 articles published; 5 submitted/in press; 8 book chapters.

Scopus h-index = 27; Google scholar h-index = 32; i10-index = 80

Conferences: numerous presentations at local and international conferences.

## **xii) NRF Rating**

NRF Rating: B-2 (2016-2020)

NRF Rating: B-3 (2010-2015)

NRF Rating: B-3 (2005-2009)

NRF Rating: C-2 (1999-2004)