



BPI for Palaeontological Research

Private Bag 3, WITS 2050, South Africa • Telephone +27 11 717-6682 • Fax +27 11 717-6694

Email: bruce.rubidge@wits.ac.za

26 March 2012

Mr Jaco van der Walt
Archaeologist
Heritage Contracts and Archaeological Consulting CC (HCAC)

Email: jaco.heritage@gmail.com

Dear Mr van der Walt,

Palaeontological Report – RustMo3 PV Solar Energy Plant on farm Spruitfontein 341/90, near Buffelspoort.

As requested, herewith a desk top study with regard to the palaeontological environmental impact assessment relevant to the proposed RustMo3 PV Solar Energy Plant on farm Spruitfontein 341/90, Buffelspoort, Northwest Province.

As will be evident from my report the proposed development will not have negative effect on palaeontological heritage. From a palaeontological perspective the development may proceed.

Yours sincerely

Bruce Rubidge PhD, FGSSA, Pr Sci Nat

PALAEONTOLOGICAL ASSESSMENT –

1. PROPOSED RUSTMO2 PHOTOVOLTAIC (PV) SOLAR PLANT, BUFFELSPOORT, NORTHWEST PROVINCE

1.1 Applicant:

Momentous Energy

1.2 Proposed activity:

Establishment of a photovoltaic (PV) solar energy plant on a site near Buffelspoort in North West Province.

1.3 Location

Remaining extent of portion 90 of the farm Spruitfontein 341 adjacent to Marikana Platinum Mine, near Buffelspoort, Northwest Province (Figure 1).

2. REPORT

2.1 Methodology

For this desk top study the 2526 Rustenburg 1:250 000 Geological Map was consulted to determine the rock formations present in the area where the proposed development will occur. Combining literature review with personal experience the likelihood of damage to fossil heritage was determined.

2.2 Geology of the area affected by the proposed development

The entire area to be developed is underlain by igneous rocks of the Rustenberg Layered Suite of the Precambrian Bushveld Igneous Complex. The Bushveld Igneous Complex is an intrusive igneous body comprising a series of ultramafic-mafic layers and a suite of associated granitoid rocks.

2.3 Potential of finding fossils

As the rocks of the Bushveld Igneous Complex are Precambrian in age and are of igneous origin it is highly unlikely that fossils will be affected by the proposed solar plant development.

2.4 Recommendation

In my opinion the chances of fossils being damaged in the process of development of the proposed photovoltaic solar energy facility and associated infrastructure are extremely limited and it is recommended that, from a palaeontological perspective, the development may proceed without any mitigating clauses.

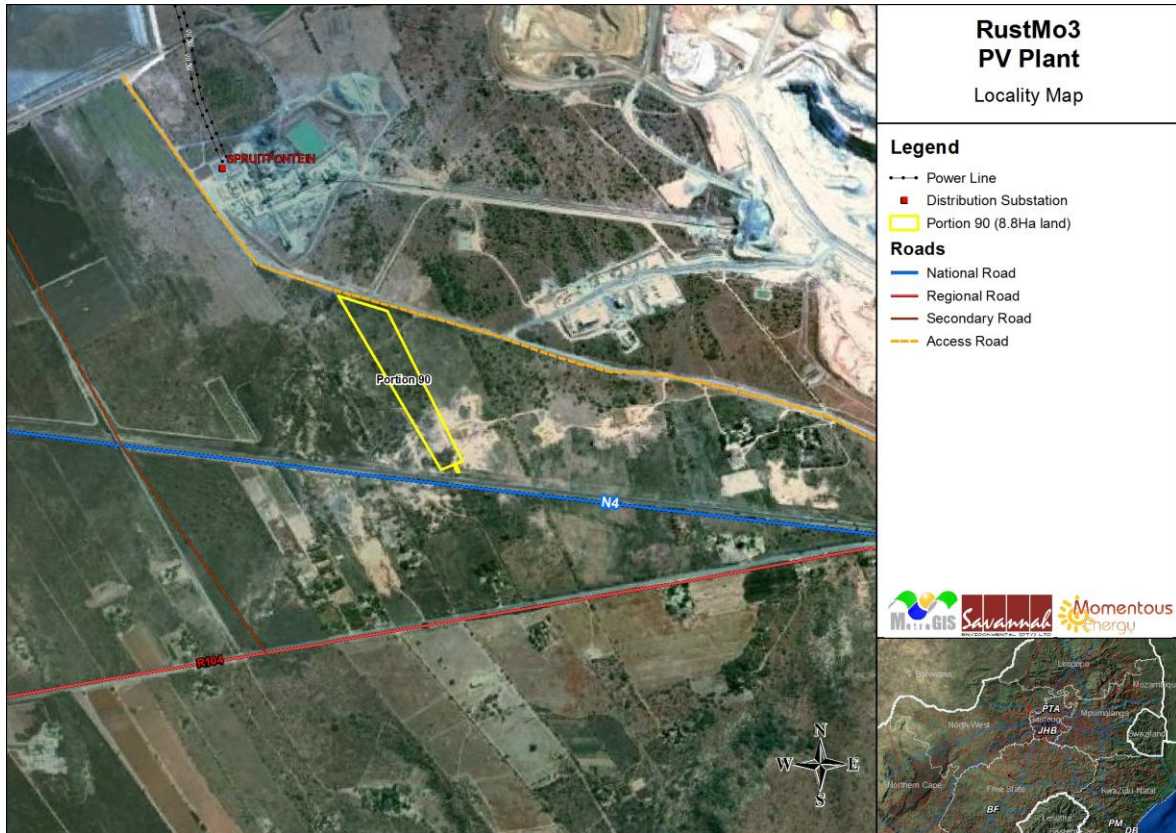


Figure 1: Locality of the proposed RustMo3 on the farm Spruitfontein 341/90, Northwest Province.

BIBLIOGRAPHY

Cawthorn RG, Eales HV, Walraven F, Uken R, and Watkeys MK. 2006. The Bushveld Complex. *In: Johnson MR, Anhaeusser and Thomas RJ (Eds). The Geology of South Africa*. Geological Society of South Africa, Johannesburg/Council for Geoscience, Pretoria. pp 261-281.

McCarthy, T.S. and Rubidge, B.S. 2005. *The story of Earth and Life – a southern African perspective on the 4.6 billion year journey*. Struik Publishers, Cape Town. pp 333.

Bruce Rubidge PhD, FGSSA, Pr Sci Nat