

Proposed development at De Bad, south of Schmidtsdrift, Northern Cape

DESKTOP STUDY PALAEOLOGY

Compiled by Dr JF Durand (Sci. Nat.)

For:

Exigo Sustainability (Pty) Ltd.
The Village Office Park
309 Glenwood Road
Faerie Glen
Pretoria
0043

18 August 2018

Table of Contents:

1. Executive Summary3
2. Introduction.....4
3. Terms of reference for the report.....5
4. Details of study area and the type of assessment.....8
5. Geological setting of the study area10
6. Palaeontological potential of the study area.....11
7. Conclusion and Recommendations.....12
8. Declaration of independence.....13

List of Figures:

Figure 1: Topographical maps showing study area.....8
Figure 2: Google Earth photo indicating the study area.....8
Figure 3: Palaeosensitivity map of the study area and surroundings (SAHRA, 2018).....9
Figure 4: Geology of the study area and surroundings. Adapted from the 2824 KIMBERLEY 1:250 000 Geology Map (Geological Survey, 1993).....10

1. Executive Summary

The study area is situated mainly on Quaternary sediments covering Karoo-aged sedimentary rocks and dolerite sills. Although there are no outcrops of the Karoo Supergroup on the farm, there are Ecca Group rocks and Jurassic-aged dolerite sills in the areas adjacent to the farm.

The Quaternary deposits in the study area consist mostly of aeolian dune sand while a swath of calcrete, calcified pandune and surface limestone outcrops in the middle of the farm and diamondiferous alluvium and scree occur in the north-western part of the farm bordering on the Vaal River. There is a slight probability of finding rare mammal, bird or reptile bones, mollusc shells and ostrich egg fragments in these Quaternary deposits.

The ECO should take responsibility of monitoring the excavations. If a significant find is made the procedure stipulated under Procedure for Chance Palaeontological Finds (p.12) should be followed which includes the safeguarding of the exposed fossils and the contacting of a palaeontologist for further advice.

2. Introduction

The palaeontological heritage of South Africa is unsurpassed and can only be described in superlatives. The South African palaeontological record gives us insight in *i.a.* the origin of life, dinosaurs and humans. Fossils are also used to identify rock strata and determine the geological context of the geological formations and the chronostratigraphy of Southern Africa.

The first evidence of tectonic plate movement was discovered after studying the distribution of Karoo-age fossils in South Africa and other continents and subcontinents such as India, Antarctica, South America and Australia. Fossils are also used to study evolutionary relationships, sedimentary processes and palaeoenvironments.

The Heritage Act of South Africa stipulates that fossils and fossil sites may not be altered or destroyed. The purpose of this document is to detail the probability of finding fossils in the study area that may be impacted by the proposed development.

3. Terms of reference for the report

According to the South African Heritage Resources Act (Act 25 of 1999) (Republic of South Africa, 1999), certain clauses are relevant to palaeontological aspects for a terrain suitability assessment.

- **Subsection 35(4)** No person may, without a permit issued by the responsible heritage resources authority-
- (a) destroy, damage, excavate, alter, deface or otherwise disturb any archaeological or palaeontological site or any meteorite;
- (b) destroy, damage, excavate, remove from its original position, collect or own any archaeological or palaeontological material or object or any meteorite;
- (c) trade in, sell for private gain, export or attempt to export from the republic any category of archaeological or palaeontological material or object, or any meteorite; or
- (d) bring onto or use at an archaeological or palaeontological site any excavation equipment or any equipment which assist with the detection or recovery of metals or archaeological material or objects, or use such equipment for the recovery of meteorites.
- **Subsection 35(5)** When the responsible heritage resources authority has reasonable cause to believe that any activity or development which will destroy, damage or alter any archaeological or palaeontological site is under way, and where no application for a permit has been submitted and no heritage resources management procedures in terms of section 38 has been followed, it may-
- (a) serve on the owner or occupier of the site or on the person undertaking such development an order for the development to cease immediately for such period as is specified in the order;
- (b) carry out an investigation for the purpose of obtaining information on whether or not an archaeological or palaeontological site exists and whether mitigation is necessary;
- (c) if mitigation is deemed by the heritage resources authority to be necessary, assist the person on whom the order has been served under paragraph (a) to apply for a permit as required in subsection (4); and
- (d) recover the costs of such investigation from the owner or occupier of the land on which it is believed an archaeological or palaeontological site is located or from the person proposing to undertake the development if no application for a permit is received within two weeks of the order being served.

South Africa's unique and non-renewable palaeontological heritage is protected in terms of the NHRA. According to this act, heritage resources may not be excavated, damaged, destroyed or otherwise impacted by any development without prior assessment and without a permit from the relevant heritage resources authority.

As areas are developed and landscapes are modified, heritage resources, including palaeontological resources, are threatened. As such, both the environmental and heritage legislation require that development activities must be preceded by an assessment of the impact undertaken by qualified professionals. Palaeontological Impact Assessments (PIAs) are specialist reports that form part of the wider heritage component of:

- Heritage Impact Assessments (HIAs) called for in terms of Section 38 of the National Heritage Resources Act, Act No. 25, 1999 by a heritage resources authority.
- Environmental Impact Assessment process as required in terms of other legislation listed in s. 38(8) of NHRA;
- Environmental Management Plans (EMPs) required by the Department of Mineral Resources.

HIAs are intended to ensure that all heritage resources are protected, and where it is not possible to preserve them in situ, appropriate mitigation measures are applied. An HIA is a comprehensive study that comprises a palaeontological, archaeological, built environment, living heritage, etc specialist studies. Palaeontologists must acknowledge this and ensure that they collaborate with other heritage practitioners. Where palaeontologists are engaged for the entire HIA, they must refer heritage components for which they do not have expertise on to appropriate specialists. Where they are engaged specifically for the palaeontology, they must draw the attention of environmental consultants and developers to the need for assessment of other aspects of heritage. In this sense, Palaeontological Impact Assessments that are part of Heritage Impact Assessments are similar to specialist reports that form part of the EIA reports. The standards and procedures discussed here are therefore meant to guide the conduct of PIAs and specialists undertaking such studies must adhere to them. The process of assessment for the palaeontological (PIA) specialist components of heritage impact assessments, involves:

Scoping stage in line with regulation 28 of the National Environmental Management Act (No. 107 of 1998) Regulations on Environmental Impact Assessment. This involves an **initial assessment** where the specialist evaluates the scope of the project (based, for example, on NID/BIDs) and advises on the form and extent of the assessment process. At this stage the palaeontologist may also decide to compile a **Letter of Recommendation for Exemption from further Palaeontological Studies**. This letter will state that there is little or no likelihood that any significant fossil resources will be impacted by the development. This letter should present a reasoned case for exemption, supported by consultation of the relevant geological maps and key literature.

A **Palaeontological Desktop Study** – the palaeontologist will investigate available resources (geological maps, scientific literature, previous impact assessment reports, institutional fossil collections, satellite images or aerial photos

, etc) to inform an assessment of fossil heritage and/or exposure of potentially fossiliferous rocks within the study area. A Desktop studies will conclude whether a further field assessment is warranted or not. Where further studies are required, the desktop study would normally be an integral part of a field assessment of relevant palaeontological resources.

A **Phase 1 Palaeontological Impact Assessment** is generally warranted where rock units of high palaeontological sensitivity are concerned, levels of bedrock exposure within the study area are adequate; large-scale projects with high potential heritage impact are planned; and where the distribution and nature of fossil remains in the proposed project area is unknown. In the recommendations of Phase 1, the specialist will inform whether further monitoring and mitigation are necessary. The Phase 1 should identify the rock units and significant fossil heritage resources present, or by inference likely to be present, within the study area, assess the palaeontological significance of these rock units, fossil sites or other fossil heritage, comment on the impact of the development on palaeontological heritage resources and make recommendations for their mitigation or conservation, or for any further specialist studies that are required in order to adequately assess the nature, distribution and conservation value of palaeontological resources within the study area.

A **Phase 2 Palaeontological Mitigation** involves planning the protection of significant fossil sites, rock units or other palaeontological resources and/or the recording and sampling of fossil heritage that might be lost during development, together with pertinent geological data. The mitigation may take place before and / or during the construction phase of development. The specialist will require a Phase 2 mitigation permit from the relevant Heritage Resources Authority before Phase 2 may be implemented.

A **'Phase 3' Palaeontological Site Conservation and Management Plan** may be required in cases where the site is so important that development will not be allowed, or where development is to co-exist with the resource. Developers may be required to enhance the value of the sites retained on their properties with appropriate interpretive material or displays as a way of promoting access of such resources to the public.

The assessment reports will be assessed by the relevant heritage resources authority, and depending on which piece of legislation triggered the study, a response will be given in the form of a Review Comment or Record of Decision (ROD). In the case of PIAs that are part of EIAs or EMPs, the heritage resources authority will issue a comment or a record of decision that may be forwarded to the consultant or developer, relevant government department or heritage practitioner and where feasible to all three.

4. Details of study area and the type of assessment:

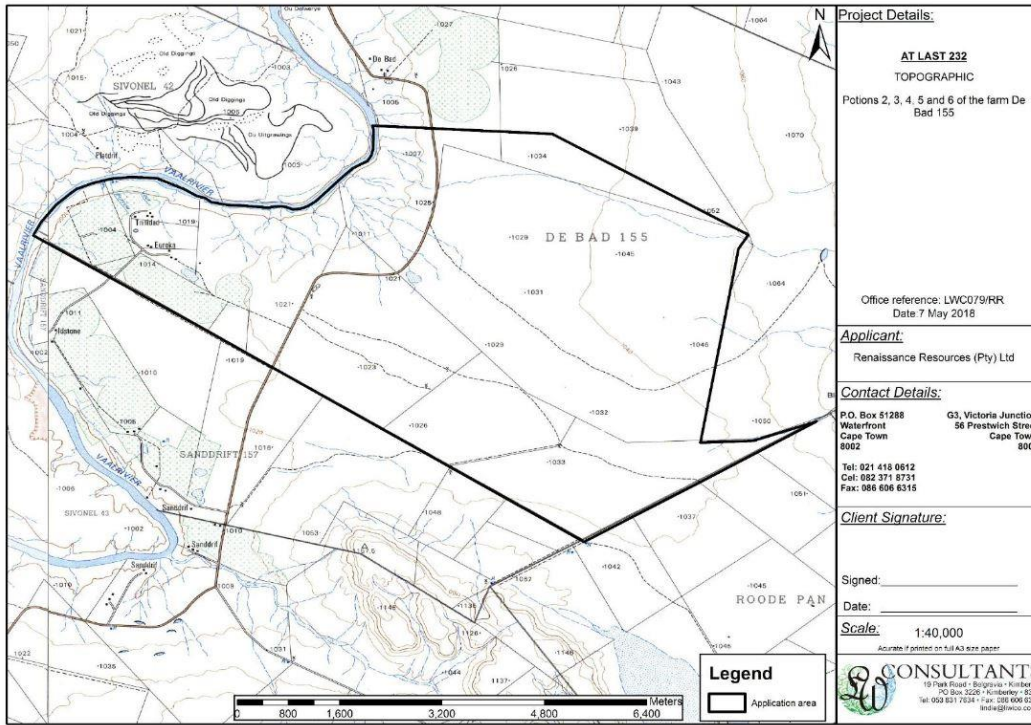


Figure 1: Topographical map showing study area



Figure 2: Google Earth photo indicating the study area



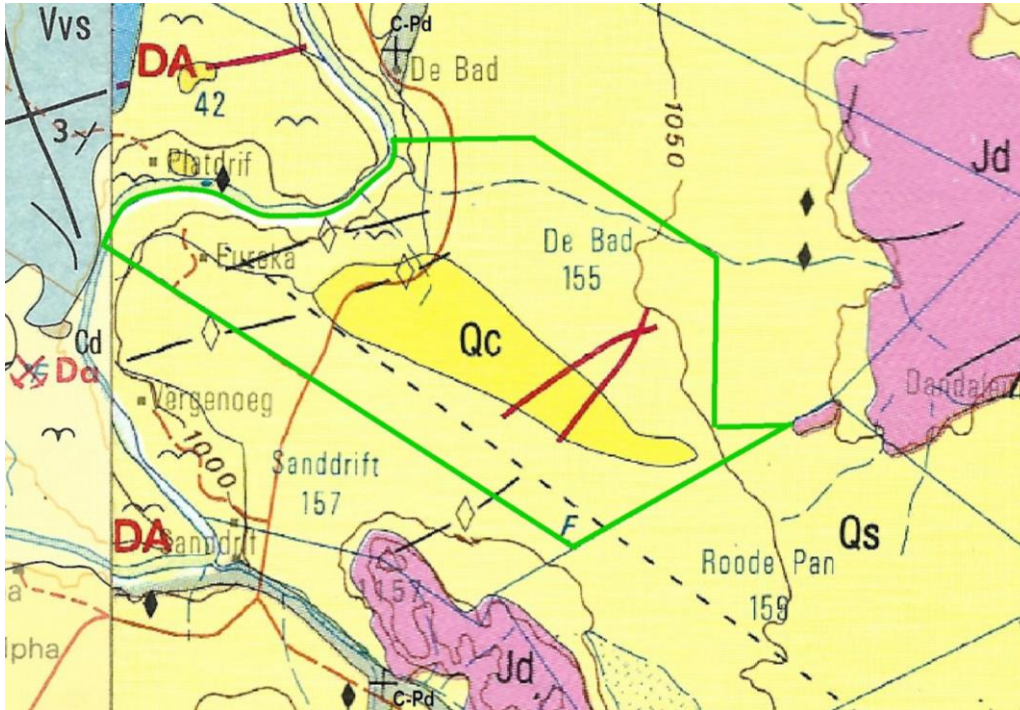
Figure 3: Palaeosensitivity map of the study area and surroundings (SAHRA, 2018)

The proposed development will take place in an area that is mostly used for farming and mining (see Figs. 1, 2). This area south of Schmidtsdrift, west of Kimberley, is mostly flat and vegetation is sparse. There is diamondiferous gravel on the western side of the study area adjacent to the Vaal River (see Figs. 2, 4).

The proposed development will take place in an area that is considered by the South African Heritage Resources Agency (SAHRA) to have a Moderate to High Palaeontological Sensitivity (see Fig. 3).

The relevant literature and geological maps for the study area in which the development is proposed to take place, have been studied for a Desktop Report.

5. Geological setting of the study area



The study area is indicated by the green polygon.

GEOLOGICAL LEGEND

	Lithology	Stratigraphy		Age
Qc	Calcrete, calcified pandune and surface limestone			Quaternary
	Alluvium and scree			
Qs	Sand: Red and grey aeolian dune sand			
Jd	Dolerite			Jurassic
C-Pd	Tillite, sandstone, mudstone, shale	Dwyka Group	Karoo Supergroup	Permian
Vvs	Siltstone, shale, quartzite, gritstone, conglomerate	Vryburg Formation of the Campbell Group	Griqualand-West Sequence	Vaalian

Figure 4: Geology of the study area and surroundings. Adapted from the 2824 KIMBERLEY 1:250 000 Geology Map (Geological Survey, 1993)

The study area is underlain by Karoo-aged rocks covered by Quaternary-aged sediments. The Karoo-aged rocks underlying the Quaternary sediments include dolerite sills and Ecca Group shales which are exposed in the region but not in the study area (see Fig.4). Most of the study area is covered with aeolian dune sand. The central part of the study area is covered in calcrete, calcified pandune and surface limestone while diamondiferous scree and alluvium occur in the north-western part of the farm adjacent to the Vaal River (Bosch, 1993; Partridge et al., 2009).

6. Palaeontological potential of the study area

Aeolian dune sand covers the greater part of the farm. Calcrete, pandune and surface limestone outcrops in the middle of the farm while alluvium and scree cover the north-western part of the farm adjacent to the Vaal River. There are well documented cases of remains of tortoises, snail shells, ostrich eggs, termitaria, bones etc. that have been discovered in sediments of this age elsewhere (Macrae, 1999; Partridge et al., 2009). Although no fossils or sub-fossils been reported from the sediments in the study area, and in spite of these Quaternary fossiliferous deposits being extremely rare, there is always the possibility that a new fossil site may be discovered.

References:

Bosch, P.J.A. (1993). Die geologie van die gebied Kimberley. Geological Survey, Pretoria, pp. 60.

Geological Survey (1993). 2824 KIMBERLEY 1: 250 000 Geology Map. Geological Survey, Pretoria.

Macrae, C. (1999). Life etched in stone. Fossils of South Africa. The Geological Society of South Africa, Johannesburg, 305 pp.

Partridge, T.C., Botha, G.A. & Haddon, I.G. (2009). Cenozoic Deposits of the Interior. In: Johnson, M. R., Anhaeusser, C. R. and Thomas, R. J. (eds.), The Geology of South Africa. Geological Society of South Africa, Johannesburg & Council for Geoscience, Pretoria. Pp: 585-604.

7. Conclusion and recommendations:

There is a low likelihood that the Quaternary deposits the study area will contain fossils. Elsewhere rare fossils of root casts, burrows, ostrich egg shells, mollusc shells, isolated bones, root casts, burrows and termitaria were found in deposits of this age (Almond & Pether 2008) and the possibility of finding similar fossils in the study area cannot be excluded.

In the unlikely event of fossils being discovered in the sands, soils, scree or calcrete in the study area, the ECO should follow the Chance Find Procedure. Although disturbed fossils should be collected and stored safely until it can be inspected by a palaeontologist, no attempt should be made to remove such accidentally discovered fossils from the rock by an unqualified person.

PROCEDURE FOR CHANCE PALAEOLOGICAL FINDS

Extracted and adapted from the National Heritage Resources Act, 1999 Regulations Reg No. 6820, GN: 548.

The following procedure must be considered in the event that previously unknown fossils or fossil sites are exposed or found during the life of the project:

1. Surface excavations should continuously be monitored by the ECO and any fossil material be unearthed the excavation must be halted.
2. If fossiliferous material has been disturbed during the excavation process it should be put aside to prevent it from being destroyed.
3. The ECO then has to take a GPS reading of the site and take digital pictures of the fossil material and the site from which it came.
4. The ECO then should contact a palaeontologist and supply the palaeontologist with the information (locality and pictures) so that the palaeontologist can assess the importance of the find and make recommendations.
5. If the palaeontologist is convinced that this is a major find an inspection of the site must be scheduled as soon as possible in order to minimise delays to the development.

From the photographs and/or the site visit the palaeontologist will make one of the following recommendations:

- a. The material is of no value so development can proceed, or:
- b. Fossil material is of some interest and a representative sample should be collected and put aside for further study and to be incorporated into a recognised

fossil repository after a permit was obtained from SAHRA for the removal of the fossils, after which the development may proceed, or:

c. The fossils are scientifically important and the palaeontologist must obtain a SAHRA permit to excavate the fossils and take them to a recognised fossil repository, after which the development may proceed.

7. If any fossils are found then a schedule of monitoring will be set up between the developer and palaeontologist in case of further discoveries.

8. Declaration of Independence:

I, Jacobus Francois Durand declare that I am an independent consultant and have no business, financial, personal or other interest in the proposed development, application or appeal in respect of which I was appointed other than fair remuneration for work performed in connection with the activity, application or appeal. There are no circumstances that compromise the objectivity of my performing such work.



Palaeontological specialist:

Dr JF Durand (Sci. Nat.)

BSc Botany & Zoology (RAU), BSc Zoology (WITS), Museology Dipl. (UP),
Higher Education Diploma (RAU), PhD Palaeontology (WITS)