

Rock Art

The engravings, all figurative and in the pecked technique on andesite blocks, are:

- | <u>NYK PAC</u> | <u>Motifs</u> | <u>NYK PAC</u> | <u>Motifs</u> |
|----------------|--|----------------|---|
| 3797 | Large giraffe
Fully pecked with
large disproportionate
head.
(Fig. 1). | 3801 | Probable aiant
Pecked outline,
head indistinct.
(Fig. 4). |
| 3798 | Ostrich - Fully
pecked, with
anomalous loop
below breast.
(Fig. 5). | 3802 | Man - Fully pecked.
Indeterminate parts -
pecked outline.
(Fig. 6). |
| 3799 | Eland - Pecked outline
with fully pecked head
and neck. Exaggerated
penis is outlined.
Human figure - Outlined.
(Fig. 2). | 3803 | Human-like, aiant -
pecked figure, body in
pecked outline; feet
fully pecked.
(Fig. 5). |
| 3800 | Lion - Pecked outline
out head and mane fully
pecked. Engraving is
small and indistinct. | 3804 | Elephant - Small,
indistinct engraving
with pecked outline. |



FIGURE 1. NYK PAC
3797. Large giraffe.
FIGURE 2. NYK PAC
3799. Eland.
FIGURE 3. NYK PAC
3803. Human-like figure.
FIGURE 4. NYK PAC
3801. Probable aiant.
FIGURE 5. NYK PAC
3798. Ostrich.
FIGURE 6. NYK PAC
3802. Man.

discerned beyond the fact that the giraffe, ostrich, elephant, lion and human figures were grouped in one part of the site; and the two eland (with one human figure) were near each other further away.



Figure 6. MMK RAC 3502 Indeterminate mammal.

Figure 7. Site plan.



None of these engravings is particularly exceptional; though they are not without interest. One curious feature is the possible mimicking of the exaggerated eland dewlap (MMK RAC 3799; Fig. 2) in the loop anomalously included beneath the breast of the ostrich (3798; Fig. 3). Eland dewlaps are composed chiefly of fatty tissue, one of the features which lent this creature pre-eminence and particular potency in Bushman cosmology (Vinnicombe 1976; Lewis-Williams 1981) and they are frequently emphasized in both engravings and rock paintings. This is true also of the second Fourteen Streams eland (3801; Fig. 4). A line emerging from the base of the neck of the giraffe (3797; Fig. 1), towards its mouth, might be some elaboration of the same motif element. Perhaps, in view of this, dewlap/breast fat had some especial local significance, but here one can only speculate. The breasts of ostriches are emphasized in engravings at Elandschoek and Rapids, downstream along the Vaal from Warrenton (Fock & Fock 1989).

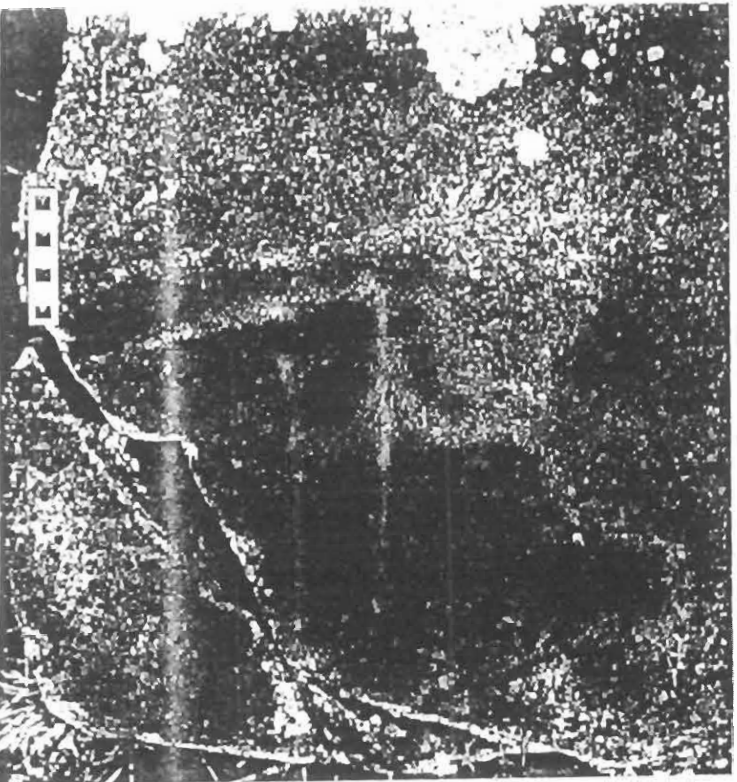
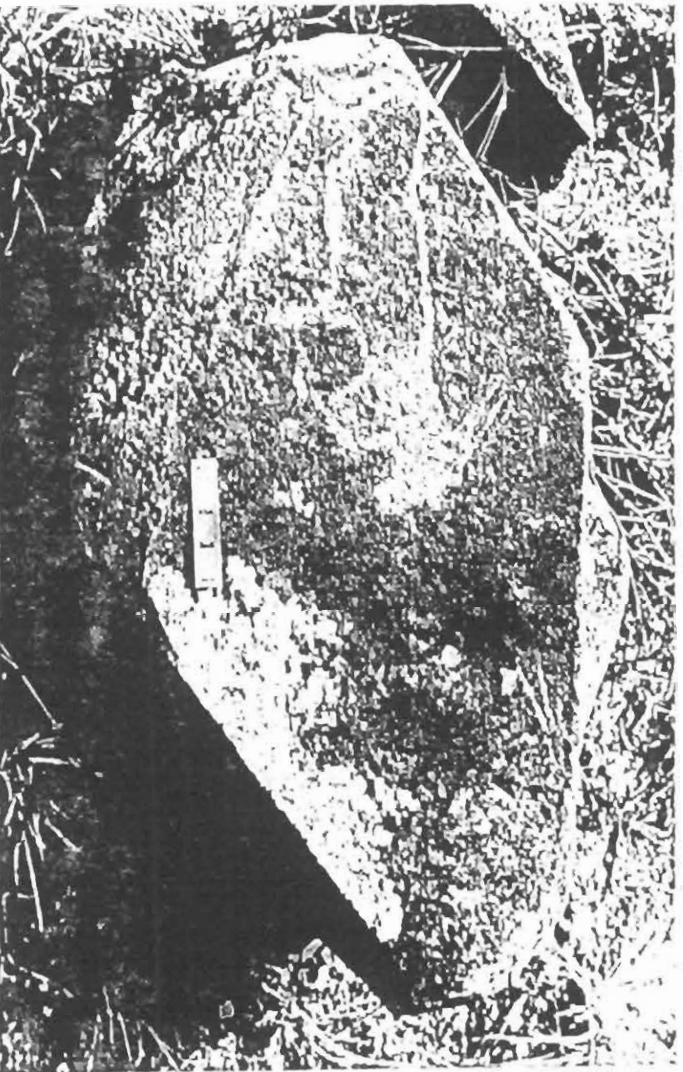


Figure 2. MMK RAC 3799
Eland with exaggerated
dewlap and breast
engrave below neck
loop. Note the
fatty tissue of the
breast (3798; Fig. 3).
Eland (3801; Fig. 4).
View of the rock.

FIGURE 2. MMK RAC 3799
Eland with exaggerated
dewlap and breast
engrave below neck
loop. Note the
fatty tissue of the
breast (3798; Fig. 3).
Eland (3801; Fig. 4).
View of the rock.

References

- Fock, G.J. & Fock, D.M.L. 1959. Felsbilder in Sudafrica. Teil 3. Die Felsbilder im Vaal-Oranje-Becken. Köln: E. Lau Verlag.
- Lewis-Williams, J.D. 1981. Believing and Seeing: symbolic meanings in southern San rock paintings. London: Academic Press.
- Vinicombe, P. 1976. People of the eland. Pietermaritzburg: Natal University Press.
- Wilman, M. 1933. The rock engravings of Griqualand West and Bechuanaland, South Africa. Cambridge: Delington Bell.

D. M. Wilman

17.03.1992.
KIMSELEY.