

Proposed Naudesbank Colliery

Chief Albert Luthuli Local Municipality, Gert Sibande District Municipality, Mpumalanga Province.

Farm: Twyfelaar 171-IS, Naudesbank 172-IS, Vaalwater 173-IS, Kromkrans 208-IS, Vaalbult 3-IT, Jaglust 47-IT

Fourie, H. Dr

Palaeontological Impact Assessment: Phase 1 Field Study

Facilitated by: Zyntha Consulting (Pty) Ltd

Midlands Office Park, Block A, Unit 3,

2 Walter Sisulu Street, Middelburg, Mpumalanga

Tel: 082 417 6901

2023/05/30

Ref: MP 30/5/1/2/2/10389 MR

Plant fossil - Ecca Group



B. Executive summary

Outline of the development project: Zyntha Consulting (Pty) Ltd has appointed Dr H. Fourie, a palaeontologist, to undertake a Palaeontological Impact Assessment (PIA), Phase 1: Field Study of the suitability of the Proposed Naudesbank Colliery in the Chief Albert Luthuli Local Municipality, Gert Sibande District Municipality, Mpumalanga Province on Farm: Naudesbank 172-IS, Vaalwater 173-IS, Vaalbult 31-IT and Jaglust 47-IT.

The applicant, Seriti Power (Pty) Ltd intends to conduct opencast roll over mining using truck and shovel mining methods. Underground mining will also take place.

The Project includes one locality Option (see Figure 1):

Option 1: A polygon area blocked in green approximately 8 km west-southwest of Carolina, north of Bethal and east of Hendrina. The R38 Road runs east-west through the project. The approximate size of the opencast site is 462.9 hectares and underground areas totalling 916.65 hectares.

Legal requirements:-

The **National Heritage Resources Act (Act No. 25 of 1999) (NHRA)** requires that all heritage resources, that is, all places or objects of aesthetic, architectural, historical, scientific, social, spiritual, linguistic or technological value or significance are protected. The Republic of South Africa (RSA) has a remarkably rich fossil record that stretches back in time for some 3.5 billion years and must be protected for its scientific value. Fossil heritage of national and international significance is found within all provinces of the RSA. South Africa's unique and non-renewable palaeontological heritage is protected in terms of the National Heritage Resources Act. According to this act, palaeontological resources may not be excavated, damaged, destroyed or otherwise impacted by any development without prior assessment and without a permit from the relevant heritage resources authority.

The main aim of the assessment process is to document resources in the development area and identify both the negative and positive impacts that the development brings to the receiving environment. The PIA therefore identifies palaeontological resources in the area to be developed and makes recommendations for protection or mitigation of these resources.

“palaeontological” means any fossilised remains or fossil trace of animals or plants which lived in the geological past, other than fossil fuels or fossiliferous rock intended for industrial use, and any site which contains such fossilised remains or traces.

For this study, resources such as geological maps, scientific literature, institutional fossil collections, satellite images, aerial maps and topographical maps were used. It provides an assessment of the observed or inferred palaeontological heritage within the study area, with recommendations (if any) for further specialist palaeontological input where this is considered necessary.

A Palaeontological Impact Assessment is generally warranted where rock units of **LOW** to **VERY HIGH** palaeontological sensitivity are concerned, levels of bedrock exposure within the study area are adequate; large scale projects with high potential heritage impact are planned; and where the distribution and nature of fossil remains in the proposed area is unknown. The specialist will inform whether further monitoring and mitigation are necessary.

Types and ranges of heritage resources as outlined in Section 3 of the National Heritage Resources Act (Act No.25 of 1999):

(i) objects recovered from the soil or waters of South Africa, including archaeological and palaeontological objects and material, meteorites and rare geological specimens.

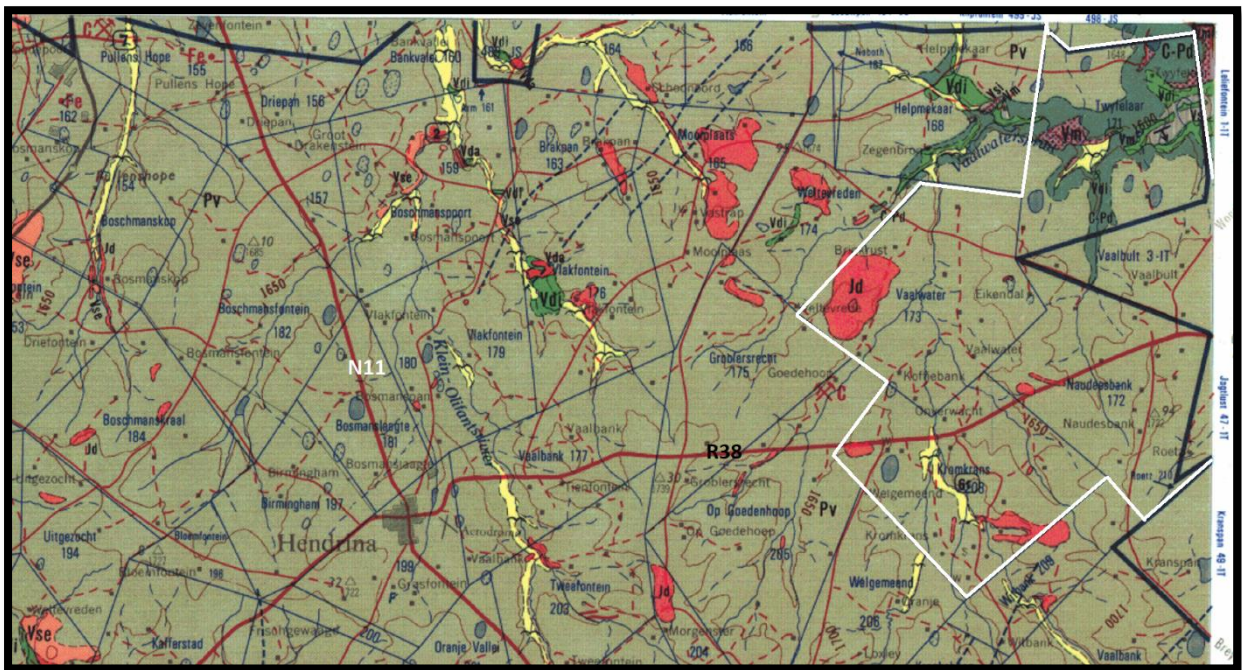
This report adheres to the guidelines of Section 38 (1) of the National Heritage Resources Act (Act No. 25 of 1999).

Subject to the provisions of subsections (7), (8) and (9), any person who intends to undertake a development categorised as (a) the construction of a road, wall, power line, pipeline, canal or other similar form of linear development or barrier exceeding 300 m in length; (b) the construction of a bridge or similar structure exceeding 50 m in length; (c) any development or other activity which will change the character of a site (see Section 38); (d) the re-zoning of a site exceeding 10 000 m² (1 ha) in extent; (e) or any other category of development provided for in regulations by SAHRA or a PHRA authority.

This report (Appendix 6, 1c) aims to provide comment and recommendations on the potential impacts that the proposed development could have on the fossil heritage of the area and to state if any mitigation or conservation measures are necessary.

Outline of the geology and the palaeontology:

The geology was obtained from map 1:100 000, Geology of the Republic of South Africa (Visser 1984) and 2628 East Rand (Keyser *et al.* 1986), 1:250 000 geological maps,



and 2630 Mbabane (Walraven 1986), 1:250 000 geological map.

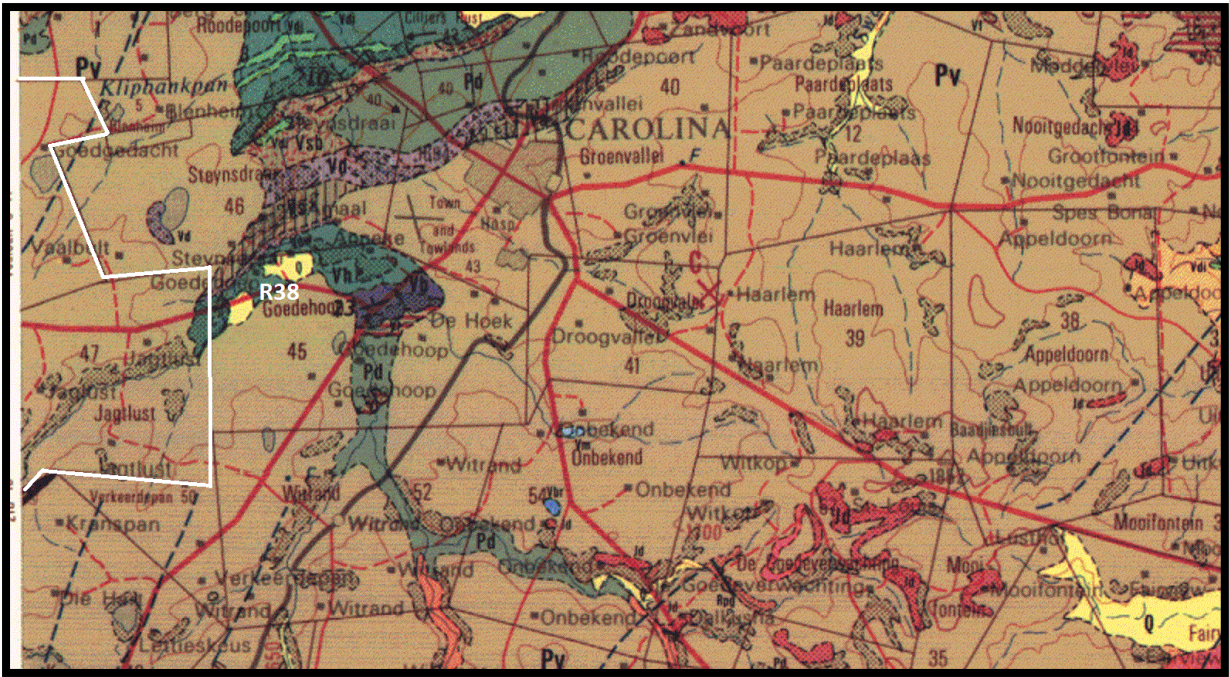


Figure: The geology of the development area.

Legend to Figure and short explanation.

Vdi – Diabase (green). Vaalian to post-Mokolian.

Jd – Dolerite (pink). Jurassic.

Pv – Sandstone, shale and grit with coal and oil-shale beds (brown). Vryheid Formation, Ecca Group, Karoo Supergroup. Permian.

C-Pd – Diamictite, shale (grey). Dwyka Group, Karoo Supergroup. Carboniferous.

Vm – Quartzite (purple). Magaliesberg Formation, Pretoria Group, Transvaal Supergroup. Vaalian.

..... – (black) Lineament (Possible dyke).

--f-- Fault.

----- - Concealed geological boundary.

⊥15° - Strike and dip.

□ – Approximate position of development (blocked in white).

The Vryheid Formation is named after the type area of Vryheid-Volksrust. In the north-eastern part of the basin the Vryheid Formation thins and eventually wedges out towards the south, southwest and west with increasing distance from its source area to the east and northeast (Johnson 2009). The Vryheid Formation consists essentially of sandstone, shale, and subordinate coal beds, and has a maximum total thickness of 500 m. It forms part of the Middle Ecca (Kent 1980). This formation has the largest coal reserves in South Africa. The pro-delta sediments are characterised by trace and plants fossils (Snyman 1996).

Palaeontology – Fossils in South Africa mainly occur in rocks of sedimentary nature and not in rocks from igneous or metamorphic nature. Therefore, if there is the presence of Karoo Supergroup strata the palaeontological sensitivity can generally be **VERY LOW** to **VERY HIGH**, and here locally in the development area **VERY HIGH** for the Vryheid Formation (SG 2.2 SAHRA APMHOB, 2012).

The Ecca Group, Vryheid Formation (Pv) may contain fossils of diverse non-marine trace, *Glossopteris* flora, mesosaurid reptiles, palaeoniscid fish, marine invertebrates, insects, and crustaceans (Johnson 2009). *Glossopteris* trees rapidly colonised the large deltas along the northern margin of the Karoo Sea. Dead vegetation

accumulated faster than it could decay, and thick accumulations of peat formed, which were ultimately converted to coal. It is only in the northern part of the Karoo Basin that the glossopterids and cordaitales, ferns, clubmosses and horsetails thrived (McCarthy and Rubidge 2005).

Summary of findings (1d): The Phase 1: Field Study was undertaken in May 2023 in autumn in dry and cool conditions. The season (vegetation) and time (shadows) have an influence on the outcome, and the following is reported:

Field Observation: The area is large and fully accessible as several roads are present. One section is north of the R38 Road and the other is south of the R38 Road. Vegetation, trees, crops, roads and fences are present. All areas could be viewed, but very few rocks or outcrops (mostly in the north) are present, mostly isolated sandstone outcrops. The topography is flat. Fossils were not located (Figures 5-20)

The mining area and infrastructure does not encroach on the other formations present in the east.

The Project includes one locality Option (Figure 1) present on the **Vryheid Formation**:

Option 1: A polygon area blocked in green approximately 8 km west-southwest of Carolina, north of Bethal and east of Hendrina. The R38 Road runs east-west through the project. The approximate size of the opencast site is 462.9 hectares and underground areas totalling 916.65 hectares.

Recommendation:

The potential impact of the development on fossil heritage is **VERY HIGH** and therefore a field survey was necessary for this development (according to SAHRA protocol). A Phase 1 Palaeontological Impact Assessment: Field Study was done. A Phase 2: Mitigation will be recommended if the Phase 1: Field Study finds fossils (not found) or if fossils are found during the development.

Concerns/threats **(1k,l,m)** to be added to EMPr:

1. Threats are earth moving equipment/machinery (for example haul trucks, front end loaders, excavators, graders, dozers) during construction, the sealing-in, disturbance, damage or destruction of the fossils by development, vehicle traffic, prospecting, mining, and human disturbance.
2. Special care must be taken during the digging, drilling, blasting and excavating of foundations, trenches, channels and footings and removal of overburden not to intrude fossiliferous layers.

The recommendations are **(1g)**:

1. Mitigation will be needed if fossils are found during the development.
2. No consultation with parties was necessary. The Environmental Control Officer must familiarise him- or herself with the formations present and its fossils and follow protocol.
3. The development may go ahead with caution due to the presence of the Vryheid Formation shale.
4. The ECO together with the mine geologist must survey for fossils before and or after clearing, blasting, drilling or excavating.
5. The EMPr will cover the conservation of heritage and palaeontological material that may be exposed during mining activities. For a chance fossil find, the protocol is to immediately cease all mining activities, construct a 30 m no-go barrier, and contact SAHRA for further investigation.

Stakeholders: Developer – Seriti Power (Pty) Ltd. 15 Chaplin Street, c/o Chaplin and Oxford Streets, Illovo, 1039.

Environmental – Zyntha Consulting (Pty) Ltd. Midlands Office Park, Block A, Unit 3, 2 Walter Sisulu Street, Middelburg, Mpumalanga. Tel: 082 417 6901.

Landowners – Several.

C. Table of Contents

A. Title page	1
B. Executive Summary	2
C. Table of Contents	6
D. Background Information on the project	6
E. Description of the Property or Affected Environment	8
F. Description of the Geological Setting	9
G. Background to Palaeontology of the area	20
H. Description of the Methodology	22
I. Description of significant fossil occurrences	24
J. Recommendation	25
K. Conclusions	25
L. Bibliography	26
Declaration	27
Appendix 1: Examples of Vryheid Formation fossils	28
Appendix 2: Protocol for finds and Management plan	28
Appendix 3: Table	31
Appendix 4: Impact Statement	31

D. Background information on the project

Report

This report is part of the environmental impact assessment process under the National Environmental Management Act, as amended (Act No. 107 of 1998) (NEMA) and includes Appendix 6 (GN R326 of 7 April 2017) of the Environmental Impact Assessment Regulations (see Appendix 2). It also is in compliance with The Minimum Standards for Palaeontological Components of Heritage Impact Assessment Reports, SAHRA, APMHOB, Guidelines 2012, Pg 1-15 (2).

Outline of development

This report discusses and aims to provide the developer with information regarding the location of palaeontological material that will be impacted by the development. In the pre-mining phase it may be necessary for the developer to apply for the relevant permit from the South African Heritage Resources Agency depending on the presence of fossils (SAHRA / PHRA).

The applicant, Seriti Power (Pty) Ltd intends to conduct opencast roll over mining using truck and shovel mining methods. Underground mining will also take place via bord-and-pillar mining methods. Coal will be crushed and screened on-site.

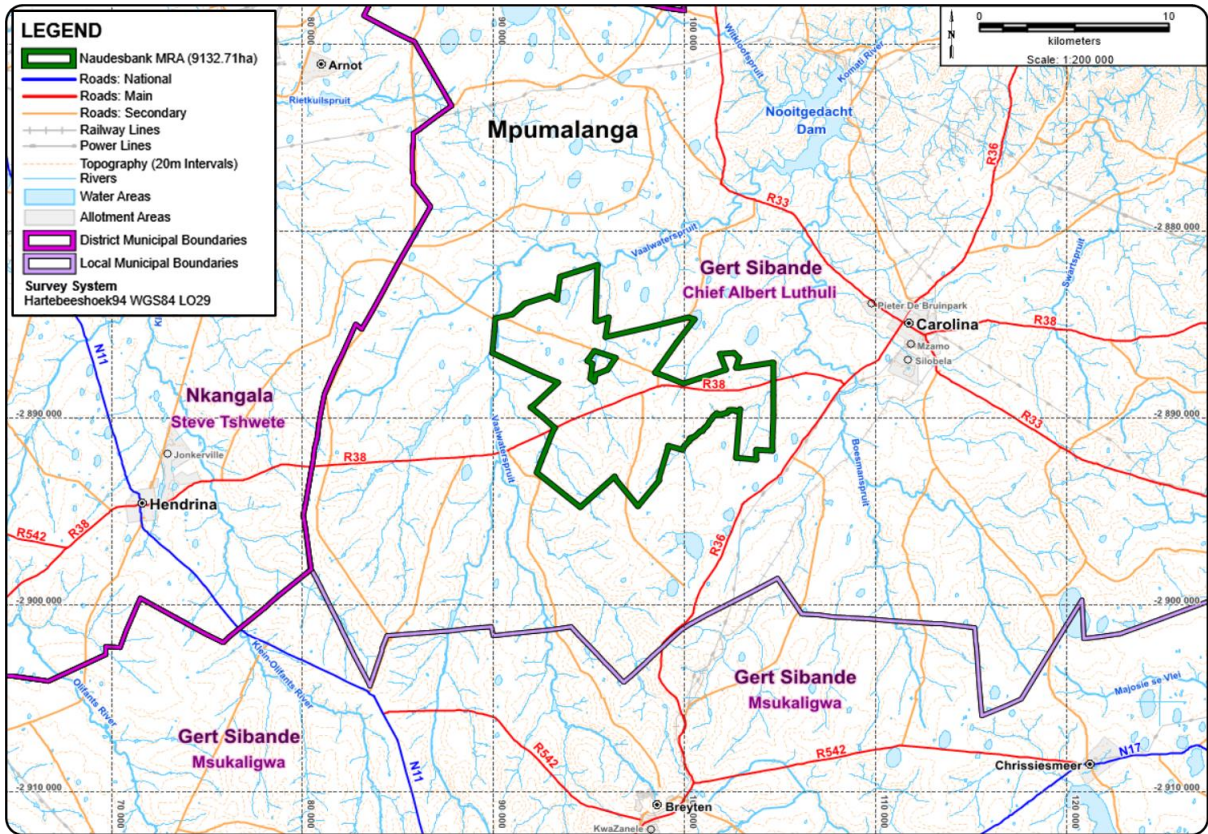


Figure 1a: Regional locality map of Naudesbank (Zyntha).

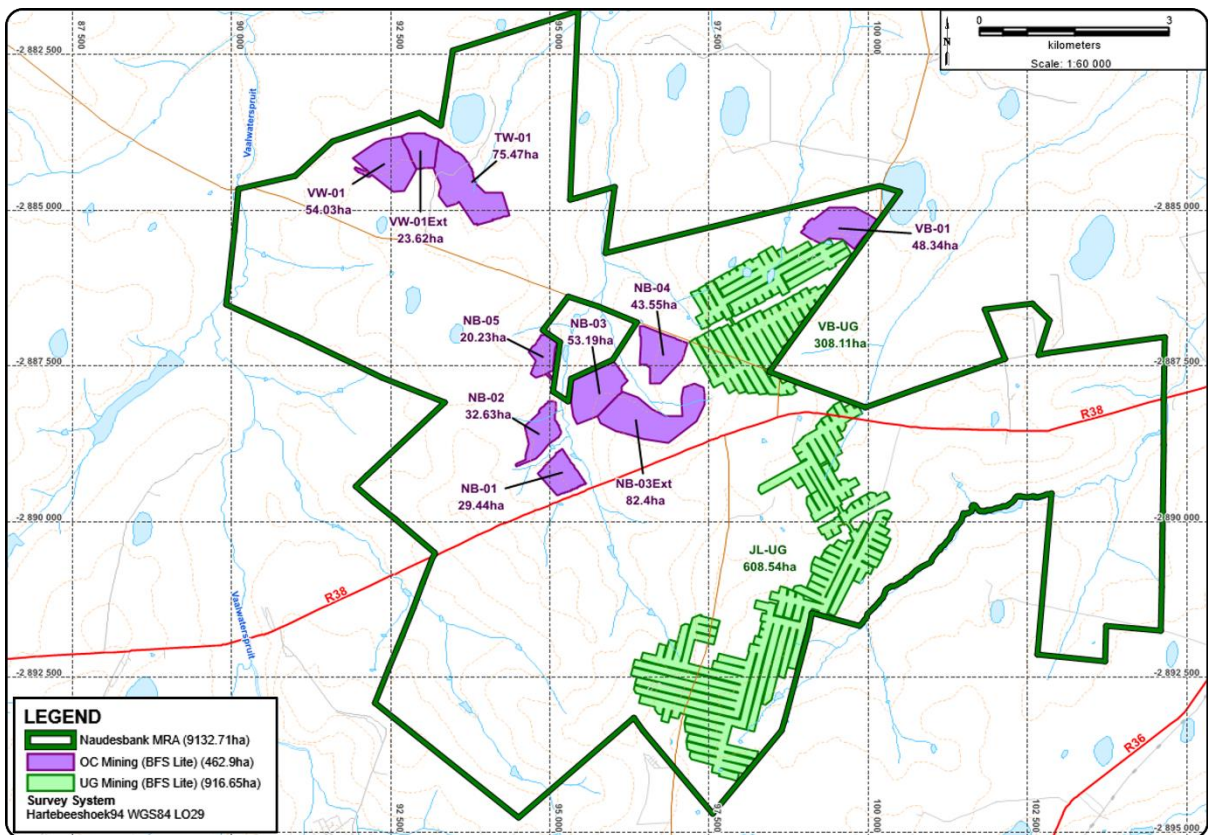


Figure 1b: Figure showing all infrastructure (Zyntha).

Related Infrastructure:

1. Underground mining
2. Opencast mining
3. Crushing and screening plant
4. RoM stockpiles
5. Overburden stockpiles
6. Topsoil stockpiles
7. Offices, workshops
8. Weighbridges
9. Laydown areas
10. Substations
11. Transfer dams
12. Access and haul roads
13. Pollution control dams (PCD's)
14. Dirty water canals, and
15. Diesel storage bays.

The Project includes one locality Option (see Figure 1):

Option 1: A polygon area blocked in green approximately 8 km west-southwest of Carolina, north of Bethal and east of Hendrina. The R38 Road runs east-west through the project. The approximate size of the opencast site is 462.9 hectares and underground areas totalling 916.65 hectares.

Rezoning/ and or subdivision of land: Presently Agriculture.

Name of Developer and Consultant: Seriti Power (Pty) Ltd and Zyntha Consulting (Pty) Ltd.

Terms of reference: Dr H. Fourie is a palaeontologist commissioned to do a palaeontological impact assessment: field study to ascertain if any palaeontological sensitive material is present in the development area. This study will advise on the impact on fossil heritage mitigation or conservation necessary, if any.

Short Curriculum vitae (tai,aii): Dr Fourie obtained a Ph.D from the Bernard Price Institute for Palaeontological Research (now ESI), University of the Witwatersrand. Her undergraduate degree is in Geology and Zoology. She specialises in vertebrate morphology and function concentrating on the Therapsid Therocephalia. At present she is curator of a large fossil invertebrate collection, Therapsids, dinosaurs, amphibia, fish, reptiles, and plants at Ditsong: National Museum of Natural History. For the past 16 years she carried out field work in the North West, Western Cape, Northern Cape, Eastern Cape, KwaZulu Natal, Limpopo, Mpumalanga, Gauteng and Free State Provinces. Dr Fourie has been employed at the Ditsong: National Museum of Natural History in Pretoria (formerly Transvaal Museum) for 28 years.

Legislative requirements: South African Heritage Resources Agency (SAHRA) for issue of permits if necessary. National Heritage Resources Act (Act No. 25 of 1999). An electronic copy of this report must be supplied to SAHRA.

E. Description of property or affected environment

Location and depth:

The Proposed Naudesbank Colliery will be situated in the Chief Albert Luthuli Local Municipality, Gert Sibande District Municipality, Mpumalanga Province on Farm: Naudesbank 172-IS, Vaalwater 173-IS, Vaalbult 31-IT and Jaglust 47-IT.

Depth is determined by the related infrastructure to be developed and the thickness of the formation in the development area as well as depth of the foundations, footings and channels to be developed. Details of the location and distribution of all significant fossil sites or key fossiliferous rock units are often difficult to determine

due to thick topsoil, subsoil, overburden and alluvium. Depth of the overburden may vary a lot. Geological maps do not provide depth or superficial cover, it only provides mappable surface outcrops. The depth can be verified with test pit results or drill cores. The depth of the Vryheid Formation is 120 m deep.

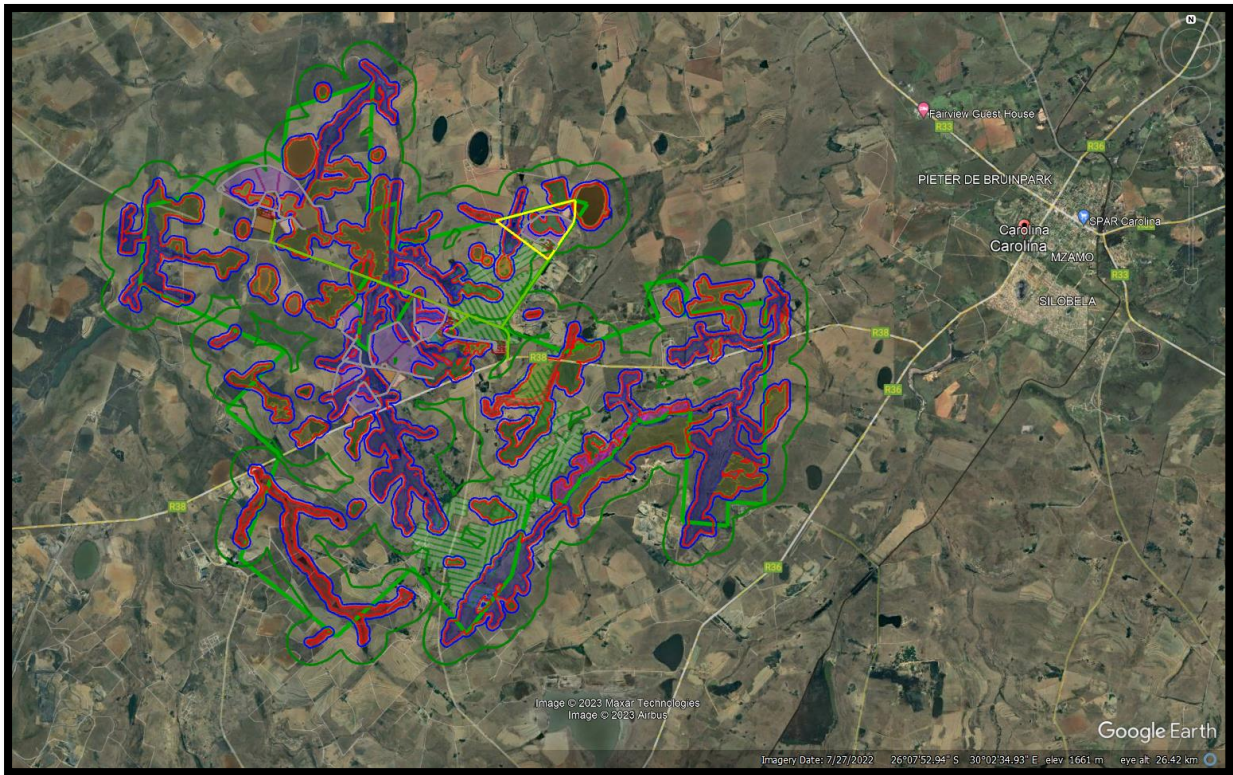


Figure 2: Google Earth image showing Mining Right area (Zyntha).

The site is underlain by the Karoo Supergroup Formations.

F. Description of the Geological Setting

Description of the rock units:

Vaalian to post-Mokolian diabase (di) intrusions occur throughout the area in the form of plates, sills and dykes. These plates are common in the Transvaal Supergroup and when present in the Pretoria Group they are referred to as the Transvaal diabase (Kent 1980, Visser 1989). The diabase sills of Bushveld age (Norman and Whitfield 2006) are typically fine-grained, green-grey with plagioclase and pyroxenes (Visser 1989).

Large areas of the southern African continent are covered by the Karoo Supergroup (Figure 3). It covers older geological formations with an almost horizontal blanket. Several basins are present with the main basin in the central part of south Africa and several smaller basins towards Lebombo, Springbok Flats and Soutpansberg. An estimated age is 150 – 180 Ma (million years). And a maximum thickness of 7000 m is reached in the south. Three formations overlie the Beaufort Group, they are the Molteno, Elliot and Clarens Formations. The Elliot Formation is also known as the Red Beds and the old Cave Sandstone is known as the Clarens Formation. At the top is the Drakensberg Basalt Formation with its pillow lavas, pyroclasts, etc. (Kent 1980, Snyman 1996). The Beaufort Group is underlain by the Ecca Group which lies on the Dwyka Group.

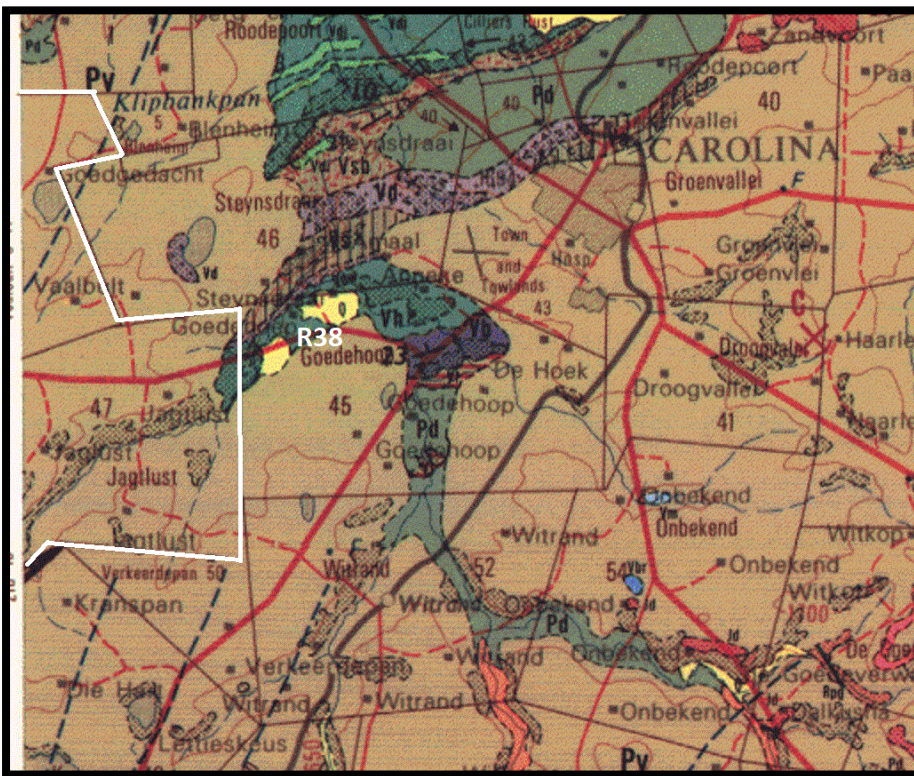
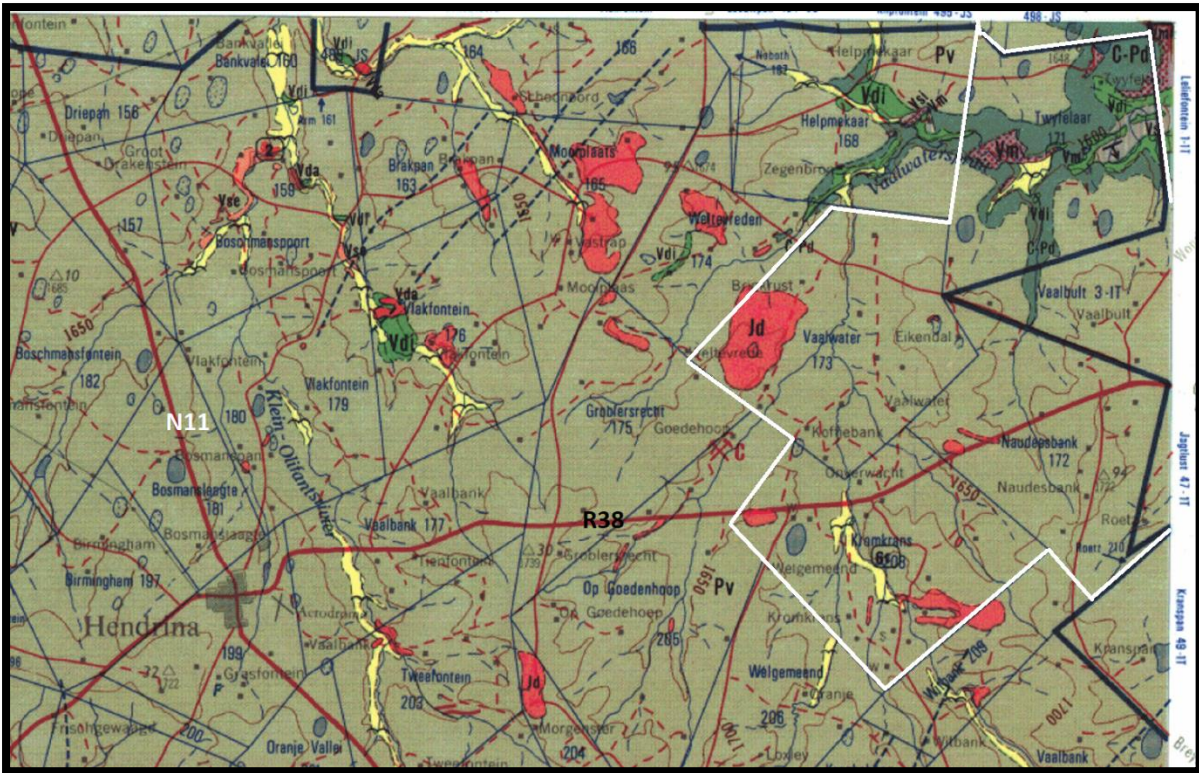


Figure 3: Geology of the development area (1h).

Legend to Figure and short explanation.

Vdi – Diabase (green). Vaalian to post-Mokolian.

Jd – Dolerite (pink). Jurassic.

Pv – Sandstone, shale and grit with coal and oil-shale beds (brown). Vryheid Formation, Ecca Group, Karoo Supergroup. Permian.

- C-Pd – Diamictite, shale (grey). Dwyka Group, Karoo Supergroup. Carboniferous.
- Vm – Quartzite (purple). Magaliesberg Formation, Pretoria Group, Transvaal Supergroup. Vaalian.
- – (black) Lineament (Possible dyke).
- - Concealed geological boundary.
- f-- Fault.
- ⊥15° - Strike and dip.
- – Approximate position of development (blocked in white).

Mining Activities on Figure:

C – Coal.

Mining past and present have an influence on the project.

Dolerite dykes (Jd/do) occur throughout the Karoo Supergroup. Structural geological features such as dykes and faults can have a measurable influence on ground water flow and mass transport. Permian sediments are extensively intruded and thermally metamorphosed (baked) by sub-horizontal sills and steeply inclined dykes of the Karoo Dolerite Suite. These early Jurassic (183 Ma) basic intrusions baked the adjacent mudrocks and sandstones to form splintery hornfels and quartzites respectively. Thermal metamorphism by dolerite intrusions tends to reduce the palaeontological heritage potential of the adjacent sediments.

The Ecca Group is early to mid-Permian (545-250 Ma) in age. Sediments of the Ecca group are lacustrine and marine to fluvio-deltaic (Snyman 1996). The Ecca group is known for its coal (mainly the Vryheid Formation) (five coal seams) and uranium. Coalfields formed due to the accumulation of plant material in shallow and large swampy deltas (see Appendix 1). The Ecca Group conformably overlies the Dwyka Group and is conformably overlain by the Beaufort Group, Karoo Supergroup. It consists essentially of mudrock (shale), but sandstone-rich units occur towards the margins of the present main Karoo basin in the south, west and north-east, with coal seams also being present in the north-east (Kent 1980, Johnson 2009).

The Vryheid Formation is named after the type area of Vryheid-Volksrust. In the north-eastern part of the basin the Vryheid Formation thins and eventually wedges out towards the south, southwest and west with increasing distance from its source area to the east and northeast (Johnson 2009). The Vryheid Formation consists essentially of sandstone, shale, and subordinate coal beds, and has a maximum total thickness of 500 m. It forms part of the Middle Ecca (Kent 1980). This formation has the largest coal reserves in South Africa. The pro-delta sediments are characterised by trace and plants fossils (Snyman 1996).

Coal has always been the main energy source in industrial South Africa. It is in Mpumalanga, south of the N4, that most of the coal-fired power stations are found. Eskom is by far the biggest electricity generator in Africa. Thick layers of coal just below the surface are suited to open-cast mining and where the overlying sediments are too thick, shallow underground mining. In 2003, coal was South Africa's third most valuable mineral commodity and is also used by Sasol for fuel- and chemicals-from-coal (Norman and Whitfield 2006). Grodner and Cairncross (2003) proposed a 3-D model of the Witbank Coalfield to allow easy evaluation of the sedimentary rocks, both through space and time. Through this, one can interpret the environmental conditions present at the time of deposition of the sediments. This can improve mine planning and mining techniques. The Vryheid Formation is underlain by the Dwyka Group and is gradually overlain by mudstones (and shale) and sandstones of the Volksrust Formation. The typical colours for the Vryheid Formation are grey and yellow for the sediments and black for the coal seam. The thickness of the grey shale can vary and this is interlayered with the also variable yellow sandstone and coal seams.

The Naudesbank deposit is situated on the western boundary of the Ermelo Coalfield (Zyntha).

Ecce rocks are stable and lend themselves well to developments. It is only unstable in or directly above mining activities (Snyman 1996). Dolerite dykes occur throughout the Karoo Supergroup. Structural geological features such as dykes and faults can have a measurable influence on ground water flow and mass transport. The Vryheid Formation sediments may attain a thickness of 120 – 140 m. A typical profile includes soil and clay, sandstone and siltstone, shale, 2 upper seam, shale, 2 seam, sandstone, no 1 seam, shale and dolomite at the bottom. The typical colours for the Vryheid Formation are grey and yellow for the sediments and black for the coal seam. The thickness of the grey shale can vary and this is interlayered with the also variable yellow sandstone and coal seams.

The Dwyka Group is the lowermost unit of the Karoo Supergroup overlain by the Ecce Group and underlain by the Witteberg Group, Bokkeveld or Table Mountain Groups and various other groups. It ranges in age from Late Carboniferous to early Permian. Clastic rocks containing diamictite, varved shale, conglomerate, pebbly sandstone and mudrock are present. The rocks display features reflecting a glacial and glacially-related origin (Kent 1980, Visser *et al.* 1990). Thickness varies between 100-800 m (Visser *et al.* 1990). As Gondwana drifted northward the first sediments to be deposited would have been the Dwyka. As the glaciers melted they left striations on the surface also vast quantities of mud and large fragments of rock which formed the characteristic, poorly sorted Dwyka tillite (McCarthy and Rubidge 2005). Visser *et al.* (1990) proposed two subdivisions for the Dwyka Group in the main Karoo basin, the Elandsvlei and Mbizane Formations. In the far north, the Tshidzi and Wellington Formations also form part of the Dwyka Group. Fossils are present.



Figure 4: Lithostratigraphic column of the development area (East Rand 2628).

Below the Dullstroom, Houtenbek, Steenkampsberg, Lakenvlei and Vermont Formations is the Magaliesberg Formation which is 300 m thick in the Pretoria region and up to 500 m thick in the Lowveld (Visser 1989).

Field Observation: The area is large and fully accessible as several roads are present. One section is north of the R38 Road and the other is south of the R38 Road. Vegetation, trees, crops, roads and fences are present. All areas could be viewed, but very few rocks or outcrops (mostly in the north) are present, mostly isolated sandstone outcrops. The topography is flat. Fossils were not located (Figures 5-20).

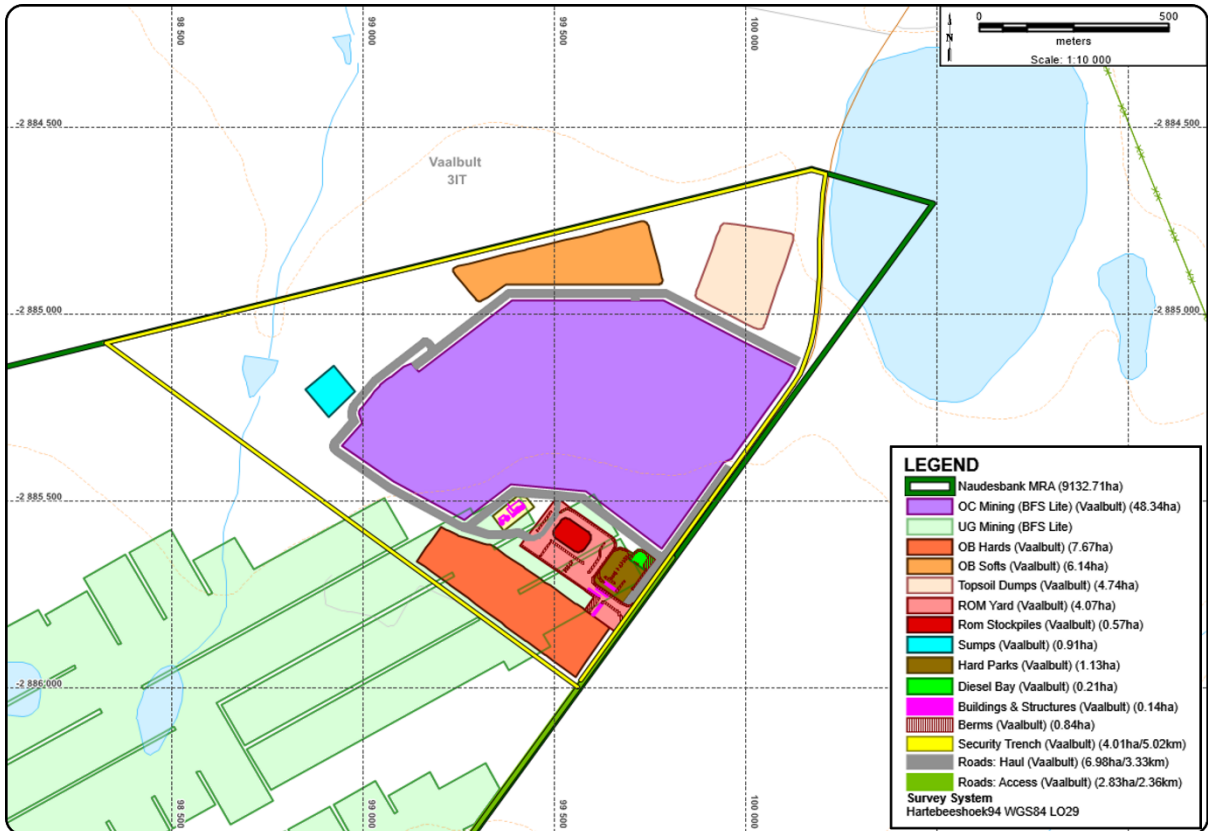


Figure 5: Photographs below are from this area, there is a gravel road that travels next to this area.



Figure 6: View overlooking area to the west with sandstone outcrop.



Figure 7: A sandstone outcrop on road in the north of the project.



Figure 8: Areas on either side of gravel road.



Figure 9: View of maize crop where underground mining will take place.



Figure 10: On Vaalbult, maize crop.

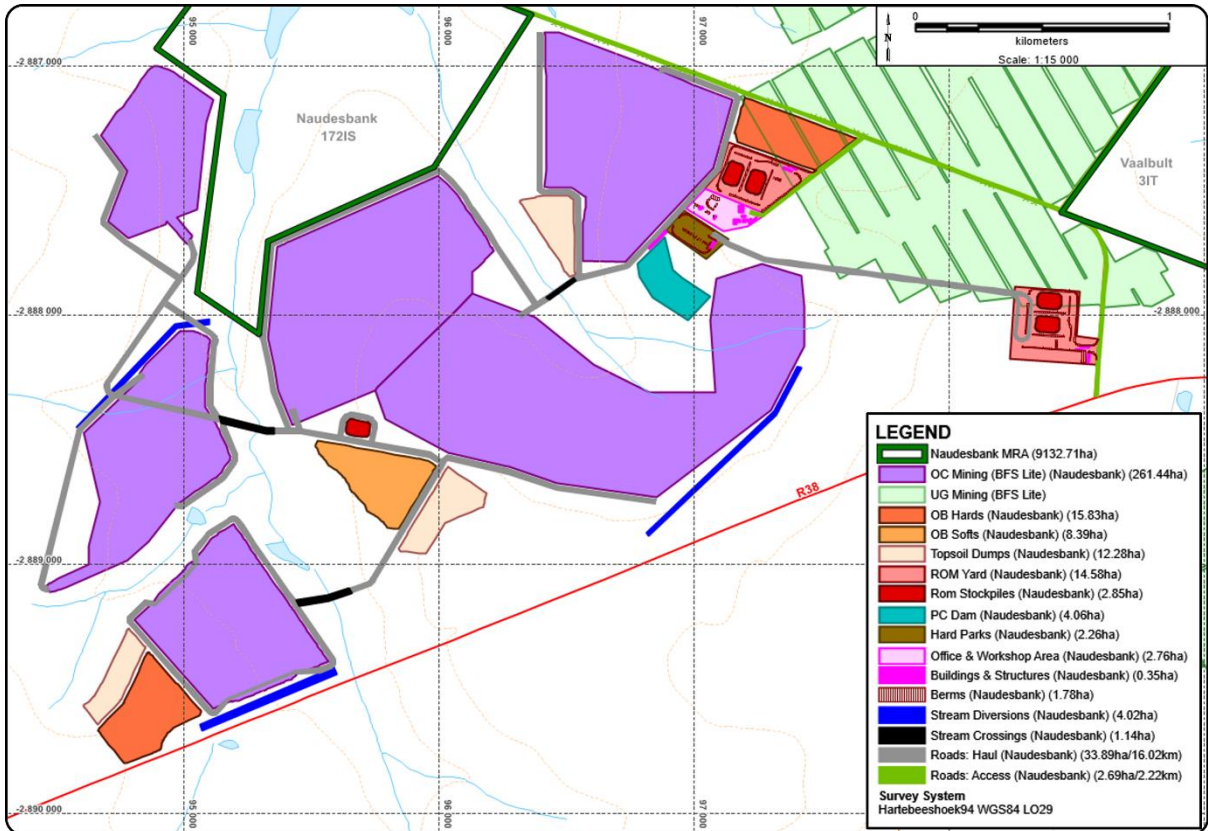


Figure 11: Plan above includes photographs below.



Figure 12: On Wakkerstroom Road right at the turn looking west.

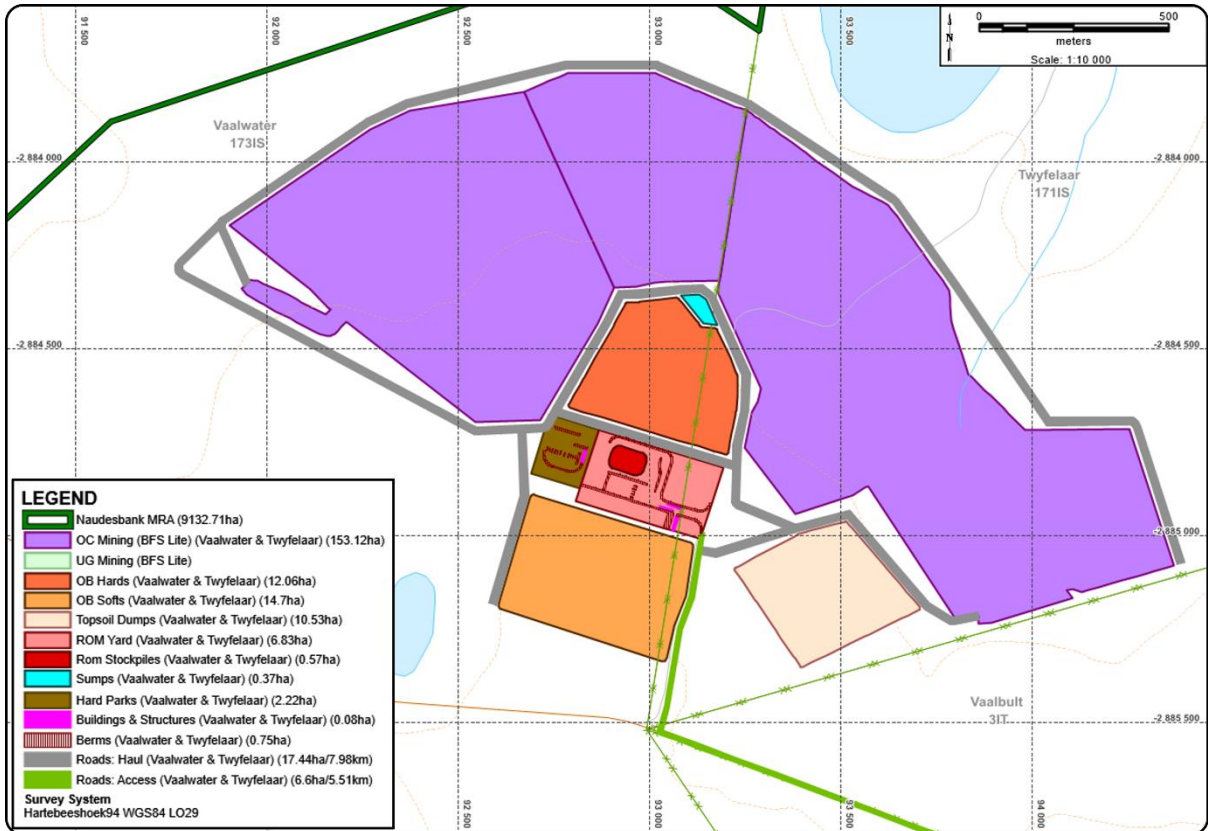


Figure 13: Figure above includes photographs below.



Figure 14: On Vaalwater, looking west.



Figure 15: Looking north-west towards Twyfelaar.



Figure 16: On Wakkerstroom Road on Vaalwater.



Figure 17: Wakkerstroom Road on Naudesbank.



Figure 18: On R38 Road looking north.



Figure 19: Looking north at OC Mining area.



Figure 20: Viewed from the R38 Road towards the north, OC Mining area.

It is recommended to wait for the response from SAHRA on the Phase 1: Field Study (this report). SAHRA protocol must be followed.

G. Background to Palaeontology of the area

Summary: When rock units of moderate to very high palaeontological sensitivity are present within the development footprint, a desk top and or field scoping (survey) study by a professional palaeontologist is usually warranted. The

main purpose of a field scoping (survey) study would be to identify any areas within the development footprint where specialist palaeontological mitigation during the construction phase may be required (SG 2.2 SAHRA AMPHOB, 2012).

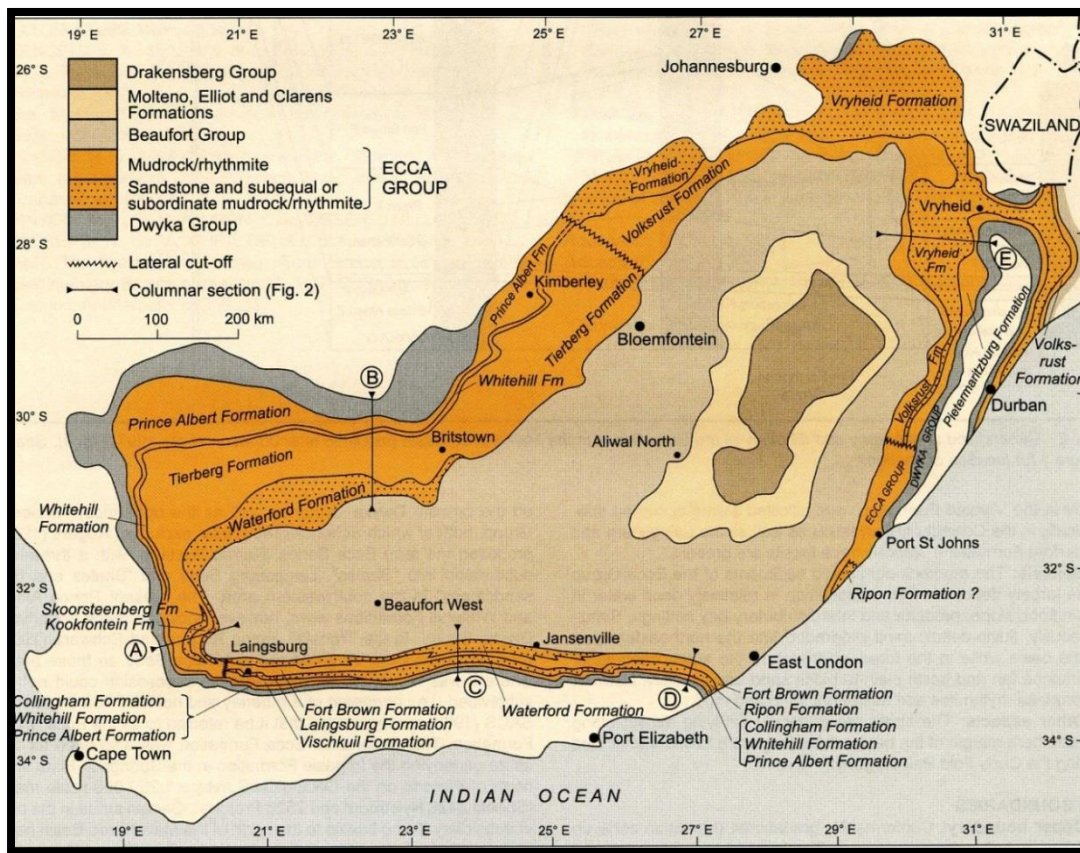


Figure 21: Extent of the Karoo Supergroup (Johnson 2009).

The Ecca Group, Vryheid Formation (Figure 18) may contain fossils of diverse non-marine trace, *Glossopteris* flora, mesosaurid reptiles, palaeoniscid fish, marine invertebrates, insects, and crustaceans (Johnson 2009). *Glossopteris* trees rapidly colonised the large deltas along the northern margin of the Karoo Sea. Dead vegetation accumulated faster than it could decay, and thick accumulations of peat formed, which were ultimately converted to coal. It is only in the northern part of the Karoo Basin that the glossopterids and cordaitales, ferns, clubmosses and horsetails thrived (McCarthy and Rubidge 2005).

The *Glossopteris* flora is thought to have been the major contributor to the coal beds of the Ecca. These are found in Karoo-age rocks across Africa, South America, Antarctica, Australia and India. This was one of the early clues to the theory of a former unified Gondwana landmass (Norman and Whitfield 2006).

Rocks of Permian age in South Africa are particularly rich in fossil plants (Rayner and Coventry 1985). The fossils are present in the grey shale interlayered with the coal seams. The fossils are not very rare and occur also in other parts of the Karoo stratigraphy. It is often difficult to spot the greyish fossils as they are the same colour as the grey shale in which they are present as these coalified compressions have been weathered to leave surface replicas on the enclosing shale matrix. The pollen of the Greenside Colliery near Witbank also on the Vryheid Formation was the focus of a Ph.D study. A locality close to Ermelo, also Vryheid Formation, has yielded *Scutum*, *Glossopteris* leaves, *Neoggerathiopsis* leaves, the lycopod *Cyclodendron leslii*, and various seeds and scale leaves (Prevec 2011).

Trace fossils are relatively abundant in the shales occurring near the top of the Dwyka Group. Lycopods (*Leptophloem australe*) have been described from the northern Free State (Mac Rae 1999). Spores and acritarchs have been reported from the interglacial mudrocks of the Dwyka Group, also pollen, wood, and plant remains in the interbedded mudrocks as well as the diamictite itself, while anthropod trackways and fish trails are present in places on bedding planes (Visser *et al.* 1990). Plant fossils have been described from outcrops of the Dwyka Group in the Limpopo Province, with special reference to this group in the Springbok Flats region (Groenewald and Groenewald 2014). The Dwyka Formation is also termed the Bizane Formation in the Free State. Trace fossils are present in KwaZulu-Natal including coprolites of fish, foraminifera, radiolarians, bryozoans, sponge spicules, starfish, nautiloids, cephalopods, bivalves, brachiopods, and palaeoniscoid fish (Groenewald 2012).

Fossils in South Africa mainly occur in rocks of sedimentary nature and not in rocks from igneous or metamorphic nature. Therefore, if there is the presence of Karoo Supergroup strata the palaeontological sensitivity is generally **VERY LOW** to **VERY HIGH**.

Table 1: Taken from Palaeotechnical Report (Groenewald 2012) (1cA).

Vryheid (Pv)	Light grey coarse- to fine-grained sandstone and siltstone. Dark coloured siltstone due to presence of carbon enrichment and coal beds	Abundant plant fossils of <i>Glossopteris</i> and other plants. Trace fossils. The reptile <i>Mesosaurus</i> has been found in the southern part of the Karoo Basin
--------------	--	---

Table 2: Criteria used (Fossil Heritage Layer Browser/SAHRA) (1cB):

Rock Unit	Significance/vulnerability	Recommended Action
Vryheid Formation	Very High	Field assessment and protocol for finds is required

Databases and collections: Ditsong: National Museum of Natural History. Evolutionary Studies Institute, University of the Witwatersrand (ESI).

Impact: **VERY HIGH** for the Vryheid Formation, Karoo Supergroup. There are significant fossil resources that may be impacted by the development (mudstone, shale) and if destroyed are no longer available for scientific research or other public good (Almond, *et al.* 2009).

The Project includes one locality Option (see Figure 1) (1f,j) The palaeontological sensitivity is as stated above.

Option 1: A polygon area blocked in green approximately 8 km west-southwest of Carolina, north of Bethal and east of Hendrina. The R38 Road runs east-west through the project. The approximate size of the opencast site is 462.9 hectares and underground areas totalling 916.65 hectares.

The mining area and infrastructure does not encroach on the other formations.

All the land involved in the development was assessed (ni,nii) and none of the property is unsuitable for development (see Recommendation B).

H. Description of the Methodology (1e)

The palaeontological impact assessment field study was undertaken in May 2023. A Phase 1: Field Survey of the affected portion includes photographs (in 7.1 mega pixels) taken of the site with a digital camera (Canon PowerShot A470). Additionally, Google Maps will be accessed on a cellular phone/tablet for navigation. A Global Positioning System (GPS) (Garmin eTrex 10) is used to record fossiliferous finds and outcrops (bedrock) when the area is not covered with topsoil, subsoil, overburden, vegetation, grassland, trees or waste. The survey did identify the Karoo Supergroup. A literature survey is included and the study relied heavily on geological maps.

SAHRA document 7/6/9/2/1 (SAHRA 2012) requires track records/logs from archaeologists not palaeontologists as palaeontologists concentrate on outcrops which may be recorded with a GPS. Isolated occurrences of rocks usually do not constitute an outcrop. Fossils can occur in dongas, as nodules, in fresh rock exposures, and in riverbeds. Finding fossils require the experience and technical knowledge of the professional palaeontologist, but that does not mean that an amateur can't find fossils. The geology of the region is used to predict what type of fossil and zone will be found in any particular region. Archaeozoologists concentrate on more recent fossils in the quaternary and tertiary deposits.

Assumptions and Limitations (1i):-

The accuracy and reliability of the report **may be** limited by the following constraints:

1. Most development areas have never been surveyed by a palaeontologist or geophysicist.
2. Variable accuracy of geological maps and associated information.
3. Poor locality information on sheet explanations for geological maps.
4. Lack of published data.
5. Lack of rocky outcrops.
6. Inaccessibility of site – could be viewed.
7. Insufficient data from developer and exact lay-out plan for all structures - sufficient.

A Phase 2 Palaeontological Impact Assessment: Mitigation will include:

1. Recommendations for the future of the site.
2. Description of work done (including number of people and their responsibilities).
3. A written assessment of the work done, fossils excavated, not removed or collected and observed.
4. Conclusion reached regarding the fossil material.
5. A detailed site plan.
6. Possible declaration as a heritage site or Site Management Plan.

The National Heritage Resources Act No. 25 of 1999 further prescribes.

Act No. 25 of 1999. National Heritage Resources Act, 1999.

National Estate: 3 (2) (f) archaeological and palaeontological sites,

(i)(1) objects recovered from the soil or waters of South Africa, including archaeological and palaeontological objects and material, meteorites and rare geological specimens,

Heritage assessment criteria and grading: (a) Grade 1: Heritage resources with qualities so exceptional that they are of special national significance;

(b) Grade 2: Heritage resources which, although forming part of the national estate, can be considered to have special qualities which make them significant within the context of a province or a region; and (c) Grade 3: Other heritage resources worthy of conservation.

SAHRA is responsible for the identification and management of Grade 1 heritage resources.

Provincial Heritage Resources Authority (PHRA) identifies and manages Grade 2 heritage resources.

Local authorities identify and manage Grade 3 heritage resources.

No person may damage, deface, excavate, alter, remove from its original position, subdivide or change the planning status of a provincially protected place or object without a permit issued by a heritage resources authority or local authority responsible for the provincial protection.

Archaeology, palaeontology and meteorites: Section 35.

(2) Subject to the provisions of subsection (8) (a), all archaeological objects, palaeontological material and meteorites are the property of the State.

(3) Any person who discovers archaeological or palaeontological objects or material or a meteorite in the course of development or agricultural activity must immediately report the find to the responsible heritage resources authority, or to the nearest local authority offices or museum, which must immediately notify such heritage resources authority.

Mitigation involves planning the protection of significant fossil sites, rock units or other palaeontological resources and/or excavation, recording and sampling of fossil heritage that might be lost during development, together with pertinent geological data. The mitigation may take place before and / or during the construction phase of development. The specialist will require a Phase 2 mitigation permit from the relevant Heritage Resources Authority before a Phase 2 may be implemented.

The Mitigation is done in order to rescue representative fossil material from the study area to allow and record the nature of each locality and establish its age before it is destroyed and to make samples accessible for future research. It also interprets the evidence recovered to allow for education of the public and promotion of palaeontological heritage.

Should further fossil material be discovered during the course of the development (e. g. during bedrock excavations), this must be safeguarded, where feasible *in situ*, and reported to a palaeontologist or to the Heritage Resources authority. In situations where the area is considered palaeontologically sensitive (e. g. Karoo Supergroup Formations, ancient marine deposits in the interior or along the coast) the palaeontologist might need to monitor all newly excavated bedrock. The developer needs to give the palaeontologist sufficient time to assess and document the finds and, if necessary, to rescue a representative sample.

When a Phase 2 palaeontological impact study is recommended, permission for the development to proceed can be given only once the heritage resources authority has received and approved a Phase 2 report and is satisfied that (a) the palaeontological resources under threat have been adequately recorded and sampled, and (b) adequate development on fossil heritage, including, where necessary, *in situ* conservation of heritage of high significance. Careful planning, including early consultation with a palaeontologist and heritage management authorities, can minimise the impact of palaeontological surveys on development projects by selecting options that cause the least amount of inconvenience and delay.

Three types of permits are available; Mitigation, Destruction and Interpretation. The specialist will apply for the permit at the beginning of the process (SAHRA 2012).

I. Description of significant fossil occurrences

All Karoo Supergroup geological formations are ranked as **VERY LOW** to **VERY HIGH**, and here the impact is potentially **VERY HIGH** for the Vryheid Formation.

Fossils likely to be found are mostly plants (Appendix 1) such as '*Glossopteris flora*' of the Vryheid Formation. The aquatic reptile *Mesosaurus* and fossil fish may also occur with marine invertebrates, arthropods and insects. Trace fossils can also be present. During storms a great variety of leaves, fructifications and twigs accumulated and because they were sandwiched between thin films of mud, they were preserved to bear record of the wealth and the density of the vegetation around the pools. They make it possible to reconstruct the plant life in these areas and wherever they are found, they constitute most valuable palaeobotanical records (Plumstead 1963) and can be used in palaeoenvironmental reconstructions (Appendix 1).

Details of the location and distribution of all significant fossil sites or key fossiliferous rock units are often difficult to be determined due to thick topsoil, subsoil, overburden and alluvium. Depth of the overburden may vary a lot.

The threats are:-

- Earth moving equipment/machinery (front end loaders, excavators, graders, dozers) during construction,
- The sealing-in or destruction of fossils by development, vehicle traffic, prospecting, mining, and human disturbance. See Description of the Geological Setting (F) above.

J. Recommendation

- a. There is no objection (see Recommendation B) to the development, it was necessary to request a Phase 1 Palaeontological Impact Assessment: Field Study to determine whether the development will affect fossiliferous outcrops as the palaeontological sensitivity of the site is **VERY HIGH**. A Phase 2 Palaeontological Mitigation is only required if the Phase 1 Palaeontological Assessment identified a fossiliferous formation (Karoo Supergroup) and fossils or if fossils are found during mining or construction. Protocol is attached (Appendix 2).
- b. This project may benefit the community, will create short- and long-term employment, the life expectancy of the community, the growth of the community, and social development in general.
- c. Preferred choice: Locality Option 1 is preferred and possible.
- d. The ECO must undertake periodic audits to monitor and record heritage impacts and non-compliance, preferable weekly or bi-weekly.
- e. The following should be conserved: if any palaeontological material is exposed during clearing, digging, excavating, drilling or blasting SAHRA must be notified. All construction activities must be stopped, a 30 m no-go barrier constructed and a palaeontologist should be called in to determine proper mitigation measures.
- f. Consultation with parties was not necessary **(1o,p,q)**.
- g. This report must be submitted to SAHRA/PHRA together with the Heritage Impact Assessment Report.

Sampling and collecting:

Wherefore a permit is needed from the South African Heritage Resources Agency (SAHRA / PHRA).

- a. Objections: Cautious. See heritage value and recommendation.
- b. Conditions of development: See Recommendation.
- c. Areas that may need a permit: Yes.
- d. Permits for mitigation: **Needed from SAHRA/PHRA prior to Mitigation.**

K. Conclusions

- a. All the land involved in the development was assessed and none of the property is unsuitable for development (see Recommendation B).
- b. All information needed for the Phase 1 Palaeontological Impact Assessment and Field Study was provided by the Consultant. All technical information was provided by Zyntha Consulting (Pty) Ltd.
- c. Areas that would involve mitigation and may need a permit from the South African Heritage Resources Agency are discussed.
- d. The following should be conserved: if any palaeontological material is exposed during clearing, digging, excavating, drilling or blasting, SAHRA must be notified. All development activities must be stopped, a 30 m barrier constructed, and a palaeontologist should be called in to determine proper mitigation measures.
- e. Condition in which development may proceed: It is further suggested that a Section 37(2) agreement of the Occupational, Health and Safety Act 85 of 1993 is signed with the relevant contractors to protect the environment (fossils) and adjacent areas as well as for safety and security reasons.

L. Bibliography

- ALMOND, J., PETHER, J, and GROENEWALD, G. 2013. South African National Fossil Sensitivity Map. SAHRA and Council for Geosciences.
- CLUVER, M.A. 1978. *Fossil Reptiles of the South African Karoo*. South African Museum, Cape Town, Pp 1-54.
- GRODNER, M. and CAIRNCROSS, B. 2003. A regional scale 3-D model of the Witbank Coalfield, Northern Karoo Basin, South Africa. *South African Journal of Geology*, **106(4)**: 249-264.
- GROENEWALD, G.H. and GROENEWALD D. 2014. Palaeotechnical Report for the Mpumalanga Province, South African Heritage Resources Agency, Pp 23.
- JOHNSON, M.R. 2009. Ecca Group. Karoo Supergroup. Catalogue of South African Lithostratigraphic Units. SACS, **10**: 5-7.
- KENT, L. E., 1980. Part 1: Lithostratigraphy of the Republic of South Africa, South West Africa/Namibia and the Republics of Bophuthatswana, Transkei and Venda. SACS, Council for Geosciences, *Stratigraphy of South Africa. 1980. South African Committee for Stratigraphy. Handbook 8, Part 1*, pp 690.
- KEYSER, N., BOTHA, G.A. and GROENEWALD, G.H. 1986. 1:250 000 Geological Map 2628 East Rand. South African Committee for Stratigraphy, Council for Geoscience, Pretoria.
- KITCHING, J.W. 1977. The distribution of the Karoo Vertebrate Fauna, Memoir 1. Bernard Price Institute for Palaeontological Research (now ESI), University of the Witwatersrand, Pp 1-131.
- MACRAE, C. 1999. *Life Etched in Stone: Fossils of South Africa*. The Geological Society of South Africa, Johannesburg. Pp 305.
- MCCARTHY, T and RUBIDGE, B. 2005. *The Story of Earth Life: A southern African perspective on a 4.6-billion-year journey*. Struik. Pp 333.
- NORMAN, N. 2013. *Geology off the beaten track: exploring South Africa's hidden treasures*. De Beers, Struik, Pp 1-256.
- NORMAN, N. and WHITFIELD, G., 2006. *Geological Journeys*. De Beers, Struik, Pp 1-320.
- PLUMSTEAD, E.P. 1963. The influence of plants and environment on the developing animal life of Karoo times. *South African Journal of Science*, **59(5)**: 147-152.
- PREVEC, R. 2011. A structural re-interpretation and revision of the type material of the glossopterid ovuliferous fructification *Scutum* from South Africa. *Palaeontologia africana*, **46**: 1-19.
- RAYNER, R.J. and COVENTRY, M.K. 1985. A *Glossopteris* flora from the Permian of South Africa. *South African Journal of Science*, **81**: 21-32.
- ROBERTS, D.L. and BRANDL, G. 2006. *Geology of South Africa: 22. Sedimentary Rocks of the Karoo Supergroup*, Pp 1-461.
- RUBIDGE, B. S. (ed.), 1995. Biostratigraphy of the Beaufort Group (Karoo Supergroup). South African Committee for Biostratigraphy, Biostratigraphic Series No. 1, 46pp. Council for Geoscience, Pretoria.
- SAHRA 2012. Compliance to SAHRA Minimum Standards for Phase 1 Archaeological Impact Assessments. Document 7/6/9/2/1. Pp 2.
- SG 2.2 SAHRA APMHOB Guidelines, 2012. Minimum standards for palaeontological components of Heritage Impact Assessment Reports, Pp 1-15.
- SNYMAN, C. P., 1996. *Geologie vir Suid-Afrika*. Departement Geologie, Universiteit van Pretoria, Pretoria, Volume 1, Pp. 513.
- VAN DER WALT, M., DAY, M., RUBIDGE, B. S., COOPER, A. K. & NETTERBERG, I., 2010. Utilising GIS technology to create a biozone map for the Beaufort Group (Karoo Supergroup) of South Africa. *Palaeontologia Africana*, **45**: 1-5.
- VISSER, D.J.L. (ed) 1984. Geological Map of South Africa 1:100 000. South African Committee for Stratigraphy. Council for Geoscience, Pretoria.

VISSER, D.J.L. (ed) 1989. *Toeligting: Geologiese kaart (1:100 000). Die Geologie van die Republieke van Suid Afrika, Transkei, Bophuthatswana, Venda, Ciskei en die Koningkryke van Lesotho en Swaziland.* South African Committee for Stratigraphy. Council for Geoscience, Pretoria.

VISSER, H.N., SPIES, J.J., FOURIE, G.P., VILJOEN, J.J., SÖHGNE, A.P.G. and VENTER, F.A. 1961. Die geologie van die gebied tussen Middelburg en Cullinan, Transvaal. Toeligting van blad 2528D (Bronkhorstspuit) en blad 2529C (Witbank). *Geologies Opname*, Pp 1-69.

WALRAVEN, F. 1986. 1:250 000 Geological Map 2630 Mbabane. South African Committee for Stratigraphy, Council for Geoscience, Pretoria.

Declaration (1b)

I, Heidi Fourie, declare that I am an independent consultant and have no business, financial, personal or other interest in the proposed development project for which I was appointed to do a palaeontological assessment. There are no circumstances that compromise the objectivity of me performing such work.

I accept no liability, and the client, by receiving this document, indemnifies me against all actions, claims, demands, losses, liabilities, costs, damages and expenses arising from or in connection with services rendered, directly or indirectly by the use of the information contained in this document.

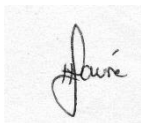
It may be possible that the Phase 1: Field Study may have missed palaeontological resources in the project area as outcrops are not always present or visible while others may lie below the overburden of earth and may only be present once development commences.

This report may not be altered in any way and any parts drawn from this report must make reference to this report.

POPI Act 2013 Statement

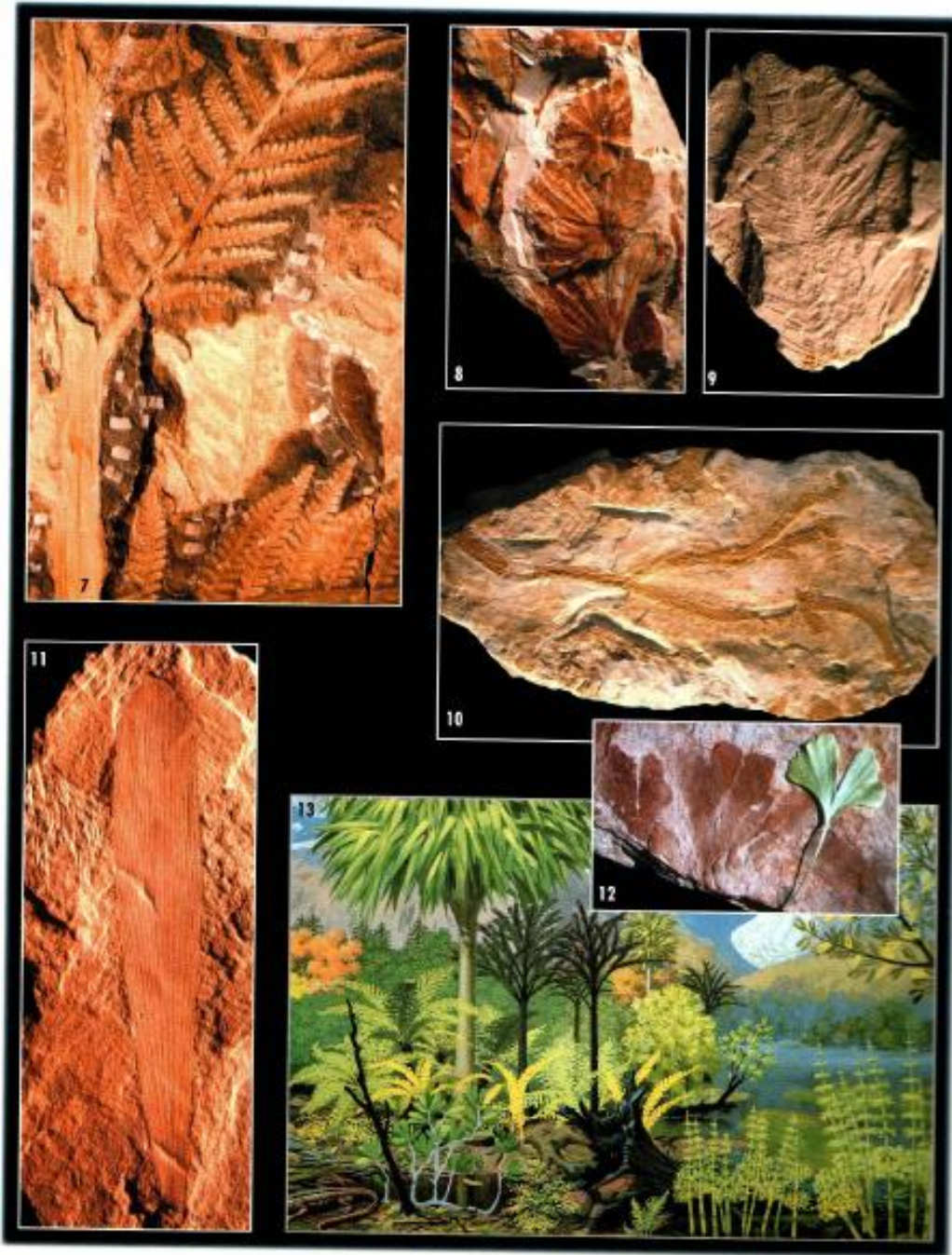
It provides that everyone has the right to privacy and includes a right to protection against the unlawful collection, retention dissemination and use of personal information contained in this document and pertains to the phone and contact details, signature and contents.

As per the Declaration Section none of the information may be shared without the permission of the author.



Heidi Fourie
2023/05/30

Appendix 1: Example of Vryheid Formation Fossils (MacRae 1999)



Appendix 2: Protocol for Chance Finds and Management Plan (1k,l,m)

This section covers the recommended protocol for a Phase 2 Mitigation process as well as for reports where the Palaeontological Sensitivity is **LOW**; this process guides the palaeontologist / palaeobotanist on site and should not be attempted by the layman / developer. As part of the Environmental Authorisation conditions, an Environmental Control Officer (ECO) will be appointed to oversee the construction activities in line with the legally binding Environmental Management Programme (EMPr).

- The EMPr already covers the conservation of heritage and palaeontological material that may be exposed during construction activities.

- For a chance find, the protocol is to immediately cease all construction activities, construct a 30 m no-go barrier, and contact SAHRA for further investigation. Construction workers must be informed that this is a no-go area.
- It is recommended that the EMP be updated to include the involvement of a palaeontologist for pre-construction training of the ECO or during the digging and excavation phase of the development.
- The ECO must visit the site after clearing, drilling, excavations and blasting and keep a photographic record.
- The developer may be required to survey the areas affected by the development and indicate on plan where the construction / development / mining will take place. Trenches may have to be dug to ascertain how deep the sediments are above the bedrock (can be a few hundred metres). This will give an indication of the depth of the topsoil, subsoil, and overburden, if need be trenches should be dug deeper to expose the interburden.

Mitigation will involve recording, rescue and judicious sampling of the fossil material present in the layers sandwiched between the geological / coal layers. It must include information on number of taxa, fossil abundance, preservational style, and taphonomy. This can only be done during mining or excavations. In order for this to happen, in case of coal mining operations, the process will have to be closely scrutinised by a professional palaeontologist / palaeobotanist to ensure that only the coal layers are mined and the interlayers (siltstone and mudstone) are surveyed for fossils or representative sampling of fossils are taking place.

The palaeontological impact assessment process presents an opportunity for identification, access and possibly salvage of fossils and add to the few good plant localities. Mitigation can provide valuable onsite research that can benefit both the community and the palaeontological fraternity.

A Phase 2 study is very often the last opportunity we will ever have to record the fossil heritage.

A Phase 2 Palaeontological Impact Assessment: Mitigation will include (SAHRA) -

1. Recommendations for the future of the site.
2. Description and purpose of work done (including number of people and their responsibilities).
3. A written assessment of the work done, fossils excavated, not removed or collected and observed.
4. Conclusion reached regarding the fossil material.
5. A detailed site plan and map.
6. Possible declaration as a heritage site or Site Management Plan.
7. Stakeholders.
8. Detailed report including the Desktop and Phase 1 study information.
9. Annual interim or progress Phase 2 permit reports as well as the final report.
10. Methodology used.

Mitigation involves planning the protection of significant fossil sites, rock units or other palaeontological resources and/or excavation, recording and sampling of fossil heritage that might be lost during development, together with pertinent geological data. The mitigation may take place before and / or during the construction phase of development. The specialist will require a Phase 2 mitigation permit from the relevant Heritage Resources Authority before a Phase 2 may be implemented.

The Mitigation is done in order to rescue representative fossil material from the study area to allow and record the nature of each locality and establish its age before it is destroyed and to make samples accessible for future research. It also interprets the evidence recovered to allow for education of the public and promotion of palaeontological heritage.

Should further fossil material be discovered during the course of the development (e. g. during bedrock excavations), this must be safeguarded, where feasible *in situ*, and reported to a palaeontologist or to the Heritage Resources authority. In situations where the area is considered palaeontologically sensitive (e. g. Karoo Supergroup Formations, ancient marine deposits in the interior or along the coast) the palaeontologist might need to monitor all newly excavated bedrock. The developer needs to give the palaeontologist sufficient time to assess and document the finds and, if necessary, to rescue a representative sample.

When a Phase 2 palaeontological impact study is recommended, permission for the development to proceed can be given only once the heritage resources authority has received and approved a Phase 2 report and is satisfied that (a) the palaeontological resources under threat have been adequately recorded and sampled, and (b) adequate development on fossil heritage, including, where necessary, *in situ* conservation of heritage of high significance. Careful planning, including early consultation with a palaeontologist and heritage management authorities, can minimise the impact of palaeontological surveys on development projects by selecting options that cause the least amount of inconvenience and delay.

Three types of permits are available; Mitigation, Destruction and Interpretation. The specialist will apply for the permit at the beginning of the process (SAHRA 2012).

The Palaeontological Society of South Africa (PSSA) does not have guidelines on excavating or collecting, but the following is suggested:

The developer needs to clearly stake or peg-out (survey) the areas affected by the mining/ construction/ development operations and dig representative trenches and if possible supply geological borehole data. When the route is better defined, it is recommended that a specialist undertake a 'walk through' of the entire road as well as construction areas, including camps and access roads, prior to the start of any construction activities, this may be done in sections.

1. When clearing vegetation, topsoil, subsoil or overburden, hard rock (outcrop) is found, the contractor needs to stop all work.
2. A Palaeobotanist / palaeontologist (contact SAHRIS for list) must then inspect the affected areas and trenches for fossiliferous outcrops / layers. The contractor / developer may be asked to move structures, and put the development on hold.
3. If the palaeontologist / palaeobotanist is satisfied that no fossils will be destroyed or have removed the fossils, development and removing of the topsoil can continue.
4. After this process the same palaeontologist / palaeobotanist will have to inspect and offer advice through the Phase 2 Mitigation Process. Bedrock excavations for footings may expose, damage or destroy previously buried fossil material and must be inspected.
5. When permission for the development is granted, the next layer can be removed, if this is part of a fossiliferous layer, then with the removal of each layer of sediment, the palaeontologist / palaeobotanist must do an investigation (a minimum of once every week).
6. At this stage the palaeontologist / palaeobotanist in consultation with the developer / mining company must ensure that a further working protocol and schedule is in place. Onsite training should take place, followed by an annual visit by the palaeontologist / palaeobotanist.

Fossil excavation if necessary, during Phase 2:

1. Photography of fossil / fossil layer and surrounding strata.
2. Once a fossil has been identified as such, the task of extraction begins.
3. It usually entails the taking of a GPS reading and recording lithostratigraphic, biostratigraphic, date, collector and locality information.

4. Using Paraloid (B-72) as an adhesive and protective glue, parts of the fossil can be kept together (not necessarily applicable to plant fossils).
5. Slowly chipping away of matrix surrounding the fossil using a geological pick, brushes and chisels.
6. Once the full extent of the fossil / fossils is visible, it can be covered with a plaster jacket (not necessarily applicable to plant fossils).
7. Chipping away sides to loosen underside.
8. Splitting of the rock containing palaeobotanical material should reveal any fossils sandwiched between the layers.

This document forms part of the Environmental Monitoring Programme. For practical reasons a palaeontologist/palaeobotanist may be required to be on site as predetermined. If any fossil material is discovered then a Phase 2 rescue operation may be necessary, and a permit will be required.

The South African Heritage Resources Agency has the following documents in place:

Guidelines to Palaeontological Permitting policy.

Minimum Standards: Palaeontological Component of Heritage Impact Assessment reports.

Guidelines for Field Reports.

Palaeotechnical Reports (Eastern Cape, North West, Northern Cape, Mpumalanga, Gauteng, Western Cape, Free State, KwaZulu-Natal, and Limpopo)

Appendix 3: Table 3: Listing points in Appendix 6 of the Act and position in Report (bold in text).

Section in Report	Point in Act	Requirement
B	1(c)	Scope and purpose of report
B	1(d)	Duration, date and season
B	1(g)	Areas to be avoided
D	1(ai)	Specialist who prepared report
D	1(aii)	Expertise of the specialist
F Figure 3	1(h)	Map
F, B	1(ni)(iA)	Authorisation
F, B	1(nii)	Avoidance, management, mitigation and closure plan
G Table 1	1(cA)	Quality and age of base data
G Table 2	1(cB)	Existing and cumulative impacts
G, D	1(f)	Details or activities of assessment
G	1(j)	Description of findings
H	1(e)	Description of methodology
H	1(i)	Assumptions
J	1(o)	Consultation
J	1(p)	Copies of comments during consultation
J	1(q)	Information requested by authority
Declaration	1(b)	Independent declaration
Appendix 2	1(k)	Mitigation included in EMPr
Appendix 2	1(l)	Conditions included in EMPr
Appendix 2	1(m)	Monitoring included in EMPr
D	2	Protocol or minimum standard

Appendix 4: Impact Statement

The development footprint is situated on the **Vryheid Formation** (Pv) of the Ecca Group, Karoo Supergroup with a **VERY HIGH** palaeontological sensitivity. The nature of the impact is the destruction of Fossil Heritage. Loss of fossil heritage will have a negative impact. The extent of the impact only extends in the region of the development activity footprint and may include transport routes. The expected duration of the impact is assessed as potentially permanent. The intensity/magnitude of the impact is high as it is destructive. The probability of the impact occurring will be definite and will occur regardless of preventative measures.

In the absence of mitigation procedures (should fossil material be present within the affected area) the damage or destruction of any palaeontological materials will be irreversible. With Mitigation the impact will be moderate and the cumulative impact is low. Impacts on palaeontological heritage during the mining/construction and premining/preconstruction phase could potentially occur and is regarded as having a high possibility. The significance of the impact occurring will be as below:

$$S = (2+5+8)5$$

$$S = 75 \text{ High } (>60).$$