

Lindsay Napier architect

LANapier PrArch PGDip MIA P.O.Box 474 Hillcrest 3650
email :lanapier@mindscope.co.za tel 083 6608521

14 March 2022

To : Confluence Environmental
Attention : Stephanie Denison
email : steph@confluencesd.co.za

Dear Stephanie,

DESKTOP STUDY OF BUILT HERITAGE AT PORTION 9 - BYTHEDALE BEACH, KZN.

A study was made of aerial photographs, maps and records available without a site inspection. There are two farmsteads on the site that contain residential and agricultural buildings. The earliest aerial photographs of the area from 1937 (fig 1-2) indicate that the farmstead near the South-Eastern boundary was built prior to 1937. It was built close to a road and North of the Mvoti River.

Heritage resources in the area are associated with King Shaka and are celebrated in the KwaDukuza museum and information Centre in KwaDukuza. The first sugar mill built in KZN, Gledhow Mill, by C.G.Smith in 1880 is situated a short distance South-West of the farmstead.

The land appears to have been planted with sugar-cane by 1937, therefore the farmstead was most likely built by an early sugar farmer.

The form of the roof (as existing) indicates a large span hipped roof over a square plan with a gable facing NW and a south wing with a gable end. This roof form was typical of farmhouses in the 1930's, although the current roof could be a replacement of a previous roof design.

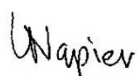
The access road which travels North-South passes close to the house in the 1937 aerial, whereas a diversion road shows in the 1967 aerial photo, taking traffic away from the house. The N2 also appears in Fig.4, built close to the farmstead on East side. (fig. 3-4)

The land register was not available for the study, this may determine the dates of occupation and subdivisions more accurately.

In conclusion the proposed development will trigger an Amafa Built Environment permit application.

I trust that this will clarify the Heritage status of the property.

Yours sincerely



Lindsay Napier Pr.Arch



Figure 1 – 1937 aerial photograph



Gledhow Mill

Figure 2 – 1937 Aerial photograph detail

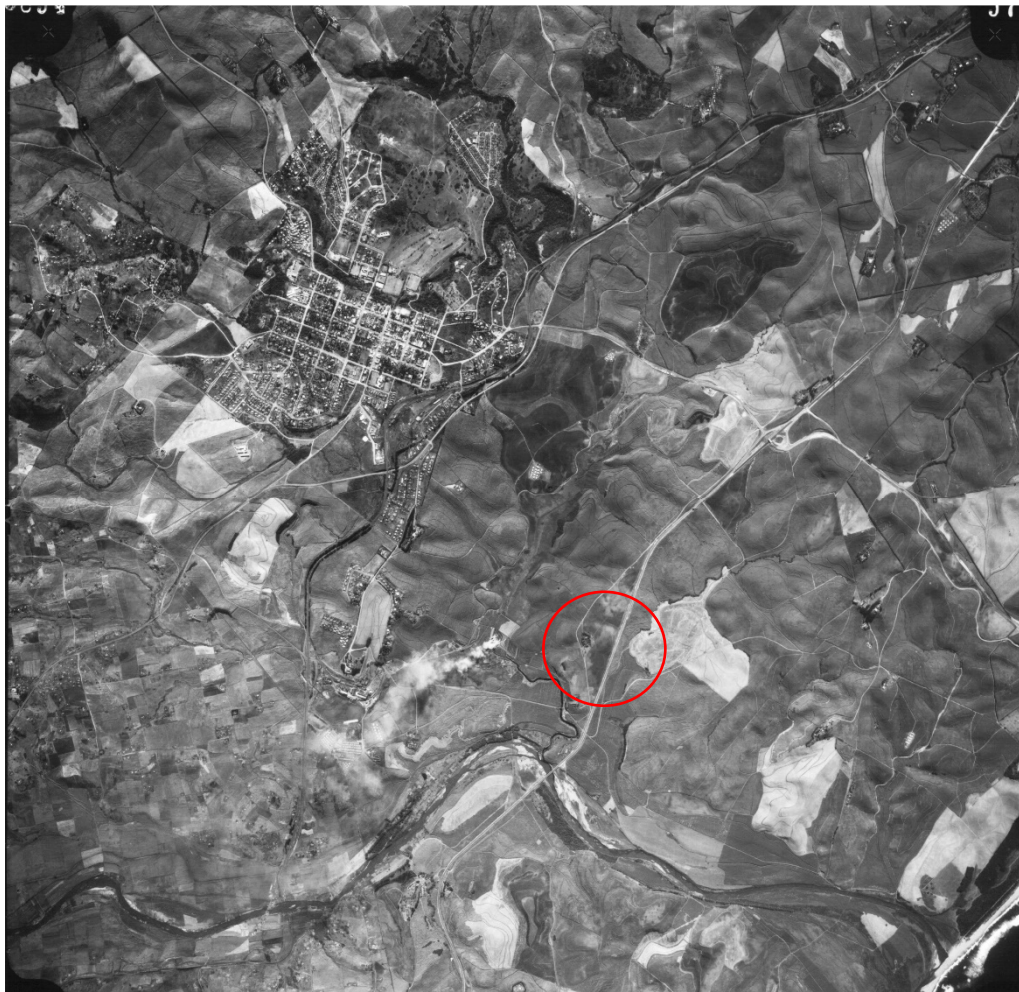


Figure 3 – 1967 Aerial photo



Figure 4 : Google Earth Image 2021