



Amafa aKwazulu-Natali  
195 Jabu Ndlovu Street Pietermaritzburg 3200 August  
Telephone 033 3946 543  
[bernadep@amafapmb.co.za](mailto:bernadep@amafapmb.co.za)

18 August 2016

**Attention Bernadet Pawandiwa**

Dear Ms Pawandiwa

**Application for Exemption from a Phase 1 Heritage Impact Assessment  
Proposed IPMA Greytown Poultry and Abattoir Project, within Remainder of Portion 26  
of the Farm Welgegund 1099FT, Greytown; Umzinyathi District Municipality  
KwaZulu-Natal  
(DEDTEA Ref.DC24/0003/2016)**

**Project Area and Project description<sup>1</sup>**

KY&CE73 Trading and Projects proposes to develop 34 hectares of a total of 84 hectares of the Remainder of Portion 26 of the Farm Welgegund. The proposed project includes the development of structures and infrastructure for the concentration and operation facilities for raising chickens; and a poultry abattoir capable of slaughtering 20 000 chickens per day.

The project site will include the following –

- The construction of 15 chicken houses on 33 ha: whereby 39 500 chicks will be kept and grown per month
- The construction of an abattoir on 1 ha (processing and packaging on site)
- The construction of staff accommodations.

See Figure 1.

The proposed project will utilise existing services (water and electricity) already available within the farm.

KY&CE73 Trading and Projects have commissioned the Basic Assessment as part of a due diligence process prior to purchasing the described land holding.

**Observations**

eThembeni staff visited the study area on 19 July 2016 and met with the current landowner, Mr S.P. Robertson. He confirmed the offer to purchase of the farm by KY&CE73 Trading and Projects for the purposes of the above poultry initiative.

<sup>1</sup> iSambulo Environmental Consulting – Basic Assessment for the proposed IPMA Greytown Poultry and Abattoir Project within Remainder of Portion 26 of the Farm Welgegund No. 1099FT, Greytown; Umzinyathi District Municipality. (DEDTEA Ref. DC24/0003/2016).

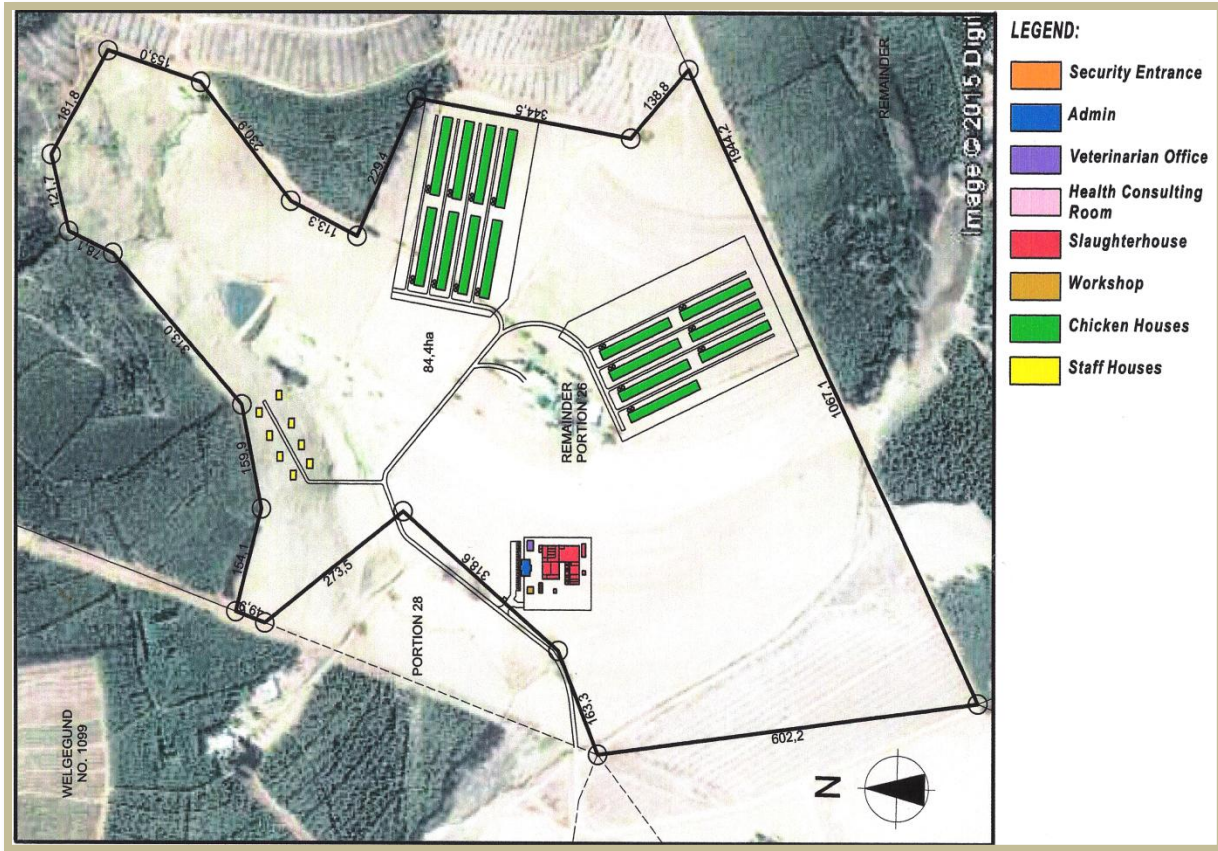


FIGURE 1 LAYOUT PLAN OF STUDY AREA – PORTION 26 OF THE FARM WELGEGUND No. 1099 FT

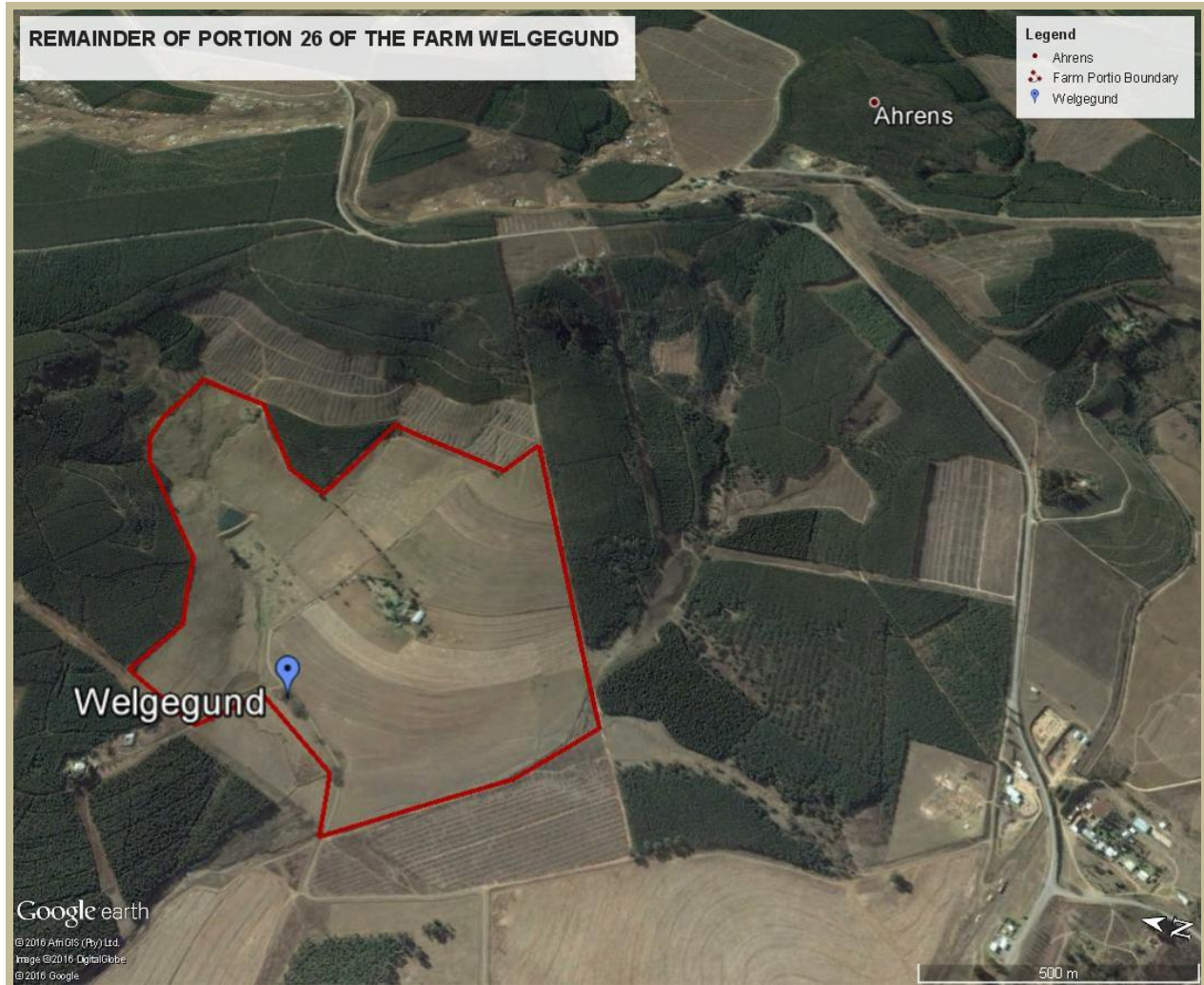
He further confirmed the following:

- The kikuyu pasture camps on the farm were all previously cultivated lands under maize.
- There were never any labour quarters on Portion 26 of the farm, labour being drawn from the nearby villages.
- The entire Welgegund landholding has been farmed since the 1850's.
- The grave of Sara Johanna Adriana Maré (Sarie Marais) is located on an adjacent portion of Welgegund.

The original Welgegund farm was the property of Louis Jacobus Nel from Mvoti County in the Greytown District, who married Sara Johanna Adriana Maré in Cape Town in 1857, and later that year they settled on the farm Welgegund. Maré died at the age of 37 after giving birth to her 11th child, and was buried near the original farmstead. The South African folk song “Sarie Marais” is claimed to be based on her.<sup>2</sup>

Today the Ahrens area comprises mostly intensive commercial forestry and maize production, and other mixed farming activities and associated infrastructure and services. The proposed chicken production units and abattoir are in keeping with the agrarian landscape.

<sup>2</sup> <http://kznheritage.org/sara-johanna-adriana-mare-sarie-marais-grave/>



**FIGURE 2. PORTION 26 OF THE FARM WELGEGUND No. 1099 FT**

The archaeological footprint of these historically sourveld “Ngongoni” grasslands is understood to be low (KZN Museum Archaeology Data Base). Surface visibility was poor due to the thick kikuyu pasture cover. However, the long history of land cultivation on the farm will have resulted in any surface scatters being moved out of primary context and incorporated into the plough zone. No significant archaeological remains are expected. Spot checks in observed open areas and along stream lines revealed none.

No historical graves are reported or were observed.

The SAHRIS Palaeontology sensitivity map indicates the area to be of medium potential. Welgegund lies on an intersection of both a Dwyka and Ecca Group basement (the latter comprising Pietermaritzburg Formation shales) with intrusive dolerite sills<sup>3</sup>. Weathering of the basement has produced relatively deep soils and the underlying lithology is unlikely to be impacted by the proposed construction activities. Consequently no further palaeontology assessment or monitoring is recommended.

<sup>3</sup> Groenewald, G. 2012. Palaeontological Technical Report for KwaZulu-Natal. Unpublished. Amafa aKwaZulu-Natali.

**Recommendations**

Accordingly, we request that Amafa grant an exemption from an HIA for the proposed chicken production facilities, allowing the project to proceed with no further heritage resource mitigation.

In this regard, please can you notify us timeously via the loaded SAHRIS case file as to the decision of Amafa.

Yours sincerely



Len van Schalkwyk  
Principle Investigator.

Appendix 1

SURVEY DIAGRAM: PORTION 26 OF THE FARM WELGEGUND No. 1099 FT

