

Cell: 073 222 4867
Fax: 086 670 9130
E-Mail: roodt.hester@gmail.com



P.O. Box 1600
POLOKWANE
0700

ATTENTION: Leander Potgieter
Idada Environmental Consultants
P O Box 3395
Polokwane 0700

September 02, 2013

PHASE 1 HERITAGE RESOURCE IMPACT ASSESSMENT (SCOPING & EVALUATION)

**Proposed Township: Guyuni
Portion of the Farm Rambuda 438 MT, Mutale Local Municipality
Vhembe District Municipality, Province Of Limpopo**

Map reference: South Africa 1:50 000 2230 CB.
Co-ordinates: S22°43'50.2" E30°27'47.7"

INTRODUCTION

The archaeologist was contracted to undertake a Phase 1 Heritage Resources Impact Assessment of the proposed township development at Guyuni on portion of the farm Rambuda 438 MT. In order to comply with the National Heritage Resources Act (NHRA – Act No 25 of 1999 – see *the attachment*), the Applicant requires information on the heritage resources such as archaeological or historical sites and features, graves and places of religious and cultural significance.

The aim of the Phase 1 assessment was to assess the impact of the proposed project on such heritage resources; and to submit appropriate recommendations with regard to management measures that may be required at affected sites/features. This survey forms part of the Environmental Impact Assessment (EIA) process.

METHODOLOGY

A pedestrian survey of the demarcated area was undertaken during which standard methods of observation were applied. A Garmin Nüvi was used for recording the coordinates. Surface visibility was mostly fair but poor in the areas covered by shrubbery.

DESCRIPTION OF THE TERRAIN

The proposed development area is located adjacent and to the west of the existing Guyuni Township. The entire area has been deforested and ploughed in the past. In various parts of the delineated area there is evidence that soil was mined, possibly for building purposes, up to a depth of at least one metre in some places and even up to bedrock. This created erosion and donga formation in some places.

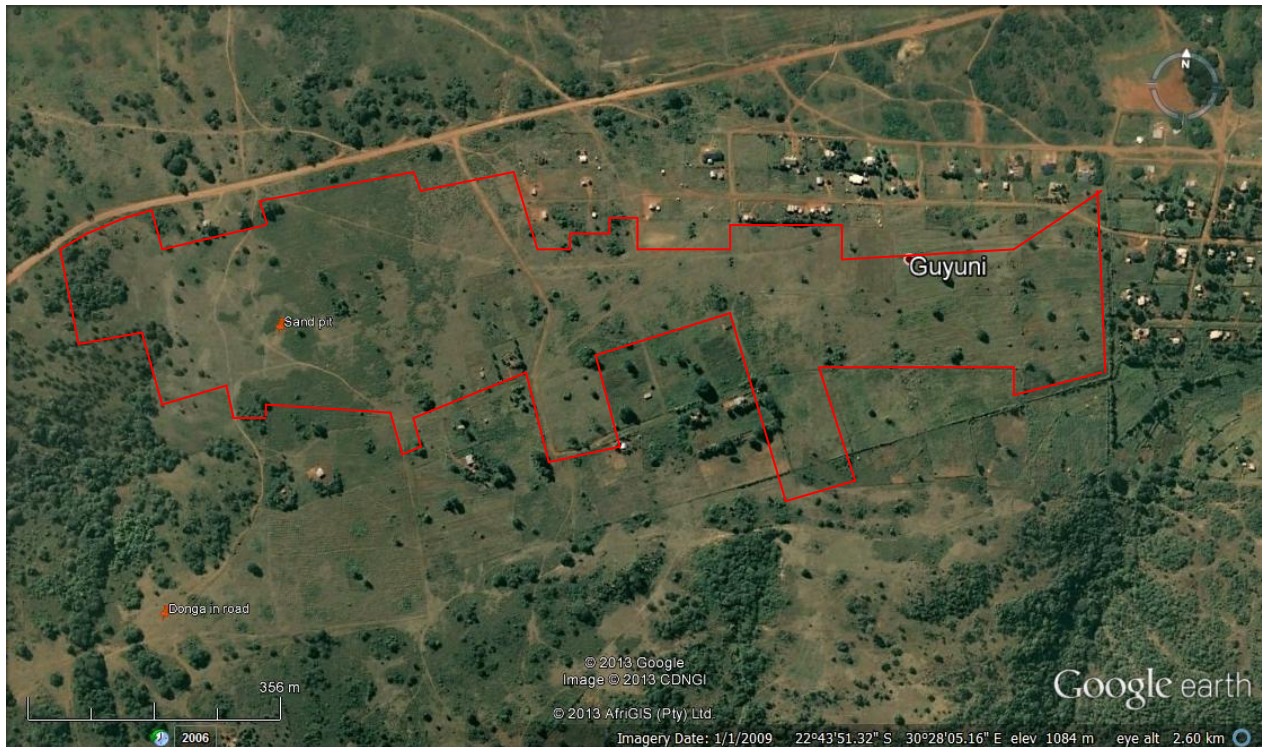


Figure 1. Google Earth image. The area to be developed is delineated in red. It is approximately 1,43 km from east to west and 0.43 km from north to south at its widest.



Figure 2. General view of the terrain to show the main vegetation cover.



Figure 3. One of the areas which was mined for sand.



Figures 4 & 5. The erosion in this dirt road (marked “Donga in road” on the above Google Earth map) is almost half a metre deep at coordinates S23°40’10.8” E29°02’06.7”. No stratification was observed.

DISCUSSION

No signs of archaeological or historical sites and features, graves or places of religious and cultural significance were located on the surface. No signs of Iron Age or historical occupation or utilisation of the area were detected.

RECOMMENDATION AND MANAGEMENT MEASURES

No significant heritage resources such as archaeological or historical material, burials or places of social or religious significance were located on the proposed area of development. No mitigation or management actions are required.

From a heritage resources management point of view, we have no objection with regard to the development. However, the discovery of previously undetected subterranean heritage remains must be reported to the Limpopo Heritage Authority or the archaeologist, and may require further mitigation measures.



Hester Roodt

BA Hons Archaeology - UP; BSc Hons Anatomy – UP
For: R & R Cultural Resource Consultants



Frans Roodt

BA Hons; MA Archaeology; Post Grad. Dip. Museology - UP
Principal Investigator for R & R Cultural Resource Consultants

The **National Heritage Resources Act (NHRA - Act No. 25 of 1999)** protects all structures and features older than 60 years (**Section 34**), archaeological sites and material (**Section 35**) and graves and burial sites (**Section 36**).

In terms of the act, the following is of relevance:

Historical remains

Section 34(1) No person may alter or demolish any structure or part of a structure, which is older than 60 years without a permit issued by the relevant provincial heritage resources authority.

Archaeological remains

Section 35.(3) Any person who discovers archaeological or palaeontological objects or material or a meteorite in the course of development or agricultural activity must immediately report the find to the responsible heritage resources authority, or to the nearest local authority or museum, which must immediately notify such heritage resources authority.

Section 35(4) No person may, without a permit issued by the responsible heritage resources authority-

- (a) destroy, damage, excavate, alter, deface or otherwise disturb any archaeological or palaeontological site or any meteorite.

Burial grounds and graves

Section 36 (3) No person may, without a permit issued by SAHRA or a provincial heritage resources authority-

- (a) destroy, damage, alter, exhume, remove from its original position or otherwise disturb any grave or burial ground older than 60 years which is situated outside a formal cemetery administered by a local authority; or
- (b) bring onto or use at a burial ground or grave referred to in paragraph (a) or (b) any excavation equipment, or any equipment which assists in detection or recovery of metals.

Section 36 (6) Subject to the provision of any law, any person who in the course of development or any other activity discovers the location of a grave, the existence of which was previously unknown, must immediately cease such activity and report the discovery to the responsible heritage resources authority which must, in co-operation with the South African Police Service and in accordance with regulations of the responsible heritage resources authority-

- (a) carry out an investigation for the purpose of obtaining information on whether or not such grave is protected in terms of this Act or is of significance to any community; and
- (b) if such grave is protected or is of significance, assist any person who or community which is a direct descendant to make arrangements for the exhumation and re-interment of the content of such grave or, in the absence of such person or community, make any such arrangement as it deems fit.

Culture resource management

Section 38(1) Subject to the provisions of subsection (7), (8) and (9), any person who intends to undertake a development* ...

must at the very earliest stages of initiating such development notify the responsible heritage resources authority and furnish it with details regarding the location, nature and extent of the proposed development.

*‘**development**’ means any physical intervention, excavation, or action, other than those caused by natural forces, which may in the opinion of the heritage authority in any way result in a change to the nature, appearance or physical nature of a place, or influence its stability and future well-being, including-

- (a) construction, alteration, demolition, removal or change of use of a place or a structure at a place;
- (b) carry out any works on or over or under a place*;
- (e) any change to the natural or existing condition or topography of land, and
- (f) any removal or destruction of trees, or removal of vegetation or topsoil;

*‘**place**’ means a site, area or region, a building or other structure* ...

*‘**structure**’ means any building, works, device or other facility made by people and which is fixed to the ground, ...

Terminology

Early Stone Age	Predominantly the Acheulean hand axe industry complex dating to ± 1 Myr – 250 000 yrs before present.
Middle Stone Age	Various lithic industries in South Africa dating from ± 250 000 yrs - 30 000 yrs before present.
Late Stone Age	The period from ± 30 000 yrs before present up to the contact period with either Iron Age farmers or European colonists.
Early Iron Age	Most of the first millennium AD.
Middle Iron Age	10 th to 13 th centuries AD.
Late Iron Age	14 th century up to the colonial period. <i>The entire Iron Age represents the spread of Bantu speaking peoples.</i>
Historical	Mainly cultural remains of western influence and settlement from AD 1652 onwards – mostly structures older than 60 years in terms of Section 34 of the NHRA.
Phase 1 assessment	A scoping survey to establish the presence of and to evaluate heritage resources in a given area.
Phase 2 assessment	An in depth culture resources management study which could include major archaeological excavations, detailed site surveys and mapping / plans of sites, including historical / architectural structures and features. Alternatively, the sampling of sites by collecting material, small test pit excavations or auger sampling is required.