



COBUS DREYER

Pr.Archaeologist/Heritage Specialist

**P.O. Box 12910
BRANDHOF 9324
Bloemfontein
dreyerj@telkomsa.net**

**Tel: 051-444 1187
Fax: 051-444 4395
Cell: 083 357 7982**

9 JULY 2012

ARCHAEOLOGICAL AND HISTORICAL INVESTIGATION OF THE PROPOSED DIAMOND MINING ACTIVITIES AT PORTION 5 (SNYDERS RUSH) OF THE FARM SLANG HEUVEL 160, BARKLY WEST DISTRICT, NORTHERN CAPE

EXECUTIVE SUMMARY

Diamond prospecting and bulk sampling operations are planned at Portion 5 (Snyders Rush) of the farm Slang Heuvel 160 near the Orange River, Barkly West district, Northern Cape.

The proposed area consists of a grass cover on red sandy soil, with scatters of Vaalbos (*Tarchonanthus camphoratus*), Driedoring (*Rhigozum trichotomum*) and single stands of *Acacia species* and Buffalo-thorn (*Ziziphus mucronata*).

No graves were located and the farm owners are also unaware of any graves in the vicinity. Some part of the farm has already been damaged by old diamond diggings of which the scars are visible on the surface.

No archaeological or historical material was found at the site.

There is no reason to delay the proposed diamond prospecting and sampling operations on the farm. I recommend that the planning and development of the mining and prospecting activities may proceed.

INTRODUCTION AND DESCRIPTION

Scope and Limitations

The investigation provided the opportunity to examine the land proposed for the diamond prospecting and sampling activities. The fairly dense scatters of Vaalbos, Driedoring, Thorn trees and Buffalo Thorn bush cover limited visibility in a way.

Methodology

Standard archaeological survey and recording methods were applied.

1. The proposed land was inspected by vehicle and on foot.
2. GPS points were taken and the surroundings and features were recorded on camera.

INVESTIGATION

Diamond prospecting and bulk sampling activities are planned at Portion 5 (Snyders Rush) of the farm Slang Heuvel 160, near Barkly West, Northern Cape (Map 1). The proposed developments will cover about 694ha. Developers intend to take twenty bulk samples evenly scattered over the land.

The application for the work is done by Rock Runner Environmental Consultants, Kimberley, on behalf of the developers, Emmanuel Diamonds CC, P.O. Box 3226, Kimberley 8300.

The farm was visited on 23 May 2012. Mr Patrick Mason, the landowner, accompanied us at the site.

Vegetation can be described as Thorn Veld, which consists mainly of Vaalbos (*Tarchonanthus camphoratus*), Driedoring (*Rhigozum trichotomum*) and single stands of *Acacia species* and Buffalo-thorn (*Ziziphus mucronata*).

Remains of old diamond diggings in the form of soil and stone pebble heaps are visible on the surface (Figs.).

The area was examined for possible archaeological and historical material and to establish the potential impact on any cultural material that might be found. The Heritage Impact Assessment (HIA) is done in terms of the National Heritage Resources Act (NHRA), (25 of 1999) and under the Environmental Conservation Act, (73 of 1989).

The study aims to locate and evaluate the significance of cultural heritage sites, archaeological material, manmade structures and buildings older than 60 years, and sites associated with oral histories and graves that might be affected by the proposed development.

LOCALITY

Portion 5 (Snyders Rush) of the farm Slang Heuvel 160 is located to the north of Kimberley (Map 1) and north east of Barkly West along the Orange River (Map 3).

The following GPS coordinates (Cape scale) were taken (Maps 4&5) (2824).

FARMSTEAD	28°24'32"S 024°40'10"E	Altitude 1149m (Figs.)
A	28°24'59"S 024°39'54"E	Altitude 1152m (Figs.)
B	28°24'48"S 024°39'42"E	Altitude 1149m (Figs.)
C	28°24'39"S 024°39'50"E	Altitude 1144m (Figs.)

RESULTS

FINDS

No archaeological, historical or other cultural remains were found at the site.

No graves were located and the farm owners are likewise unaware of any graves in the vicinity. Some part of the farm has already been damaged by old diamond diggings and heaps of soil and stone rubble are visible on the surface.

IMPACT ASSESSMENT

The diamond mining developments will have no impact on any archaeological or historical material.

RECOMMENDATIONS

There are no obvious reasons to delay the commencement of further planning and development of the mining developments.

I recommend that the prospecting and mining activities may proceed.

MITIGATION

Mitigation measures will only be required in case of the discovery of human skeletal material.

ACKNOWLEDGEMENTS

I thank Mr Patrick Mason for taking us to the site.

SELECT BIBLIOGRAPHY:

BEAUMONT, P.B. & VOGEL, J.C. 1989. Patterns in the age and context of rock art in the Northern Cape. *South African Archaeological Bulletin* 44(150):73-81.

BEAUMONT, P.B., SMITH, A.B. & VOGEL, J.C. 1995. Before the Einiqua: the archaeology of the frontier zone. In Smith, A.B. (Ed.). *Einiqualand: Studies of the Orange River Frontier*. Cape Town: University of Cape Town Press.

DEACON, J. 1992. *Archaeology for Planners, Developers and Local Authorities*. Cape Town: National Monuments Council.

DREYER, J. 2011. Archaeological & heritage investigation of the proposed MTN cell phone mast at Breekkierie near Kenhardt, Northern Cape. EIA Report for Spatial Solutions Incorporated Environmental Consultants, Bloemfontein.

HUMPHREYS, A.J.B. 1986. *Searching for the past*. Cape Town: David Philip.

MORRIS, D. 1988. Engraved in place and time: a review of variability in the rock art of the Northern Cape and Karoo. *South African Archaeological Bulletin* 43(148):109-121.

MORRIS, D. 1990a. 'Etchings' and 'Intaglios' in the Upper Karoo: Part 1: The engravings at Springbok Oog. In Beaumont, P.B. & Morris, D. *Guide to archaeological sites in the Northern Cape*. Kimberley: McGregor Museum.

MORRIS, D. 1990b. 'Etchings' and 'Intaglios' in the Upper Karoo: Part 2: Engravings on Jagtpan and adjacent farms. In Beaumont, P.B. & Morris, D. *Guide to archaeological sites in the Northern Cape*. Kimberley: McGregor Museum.

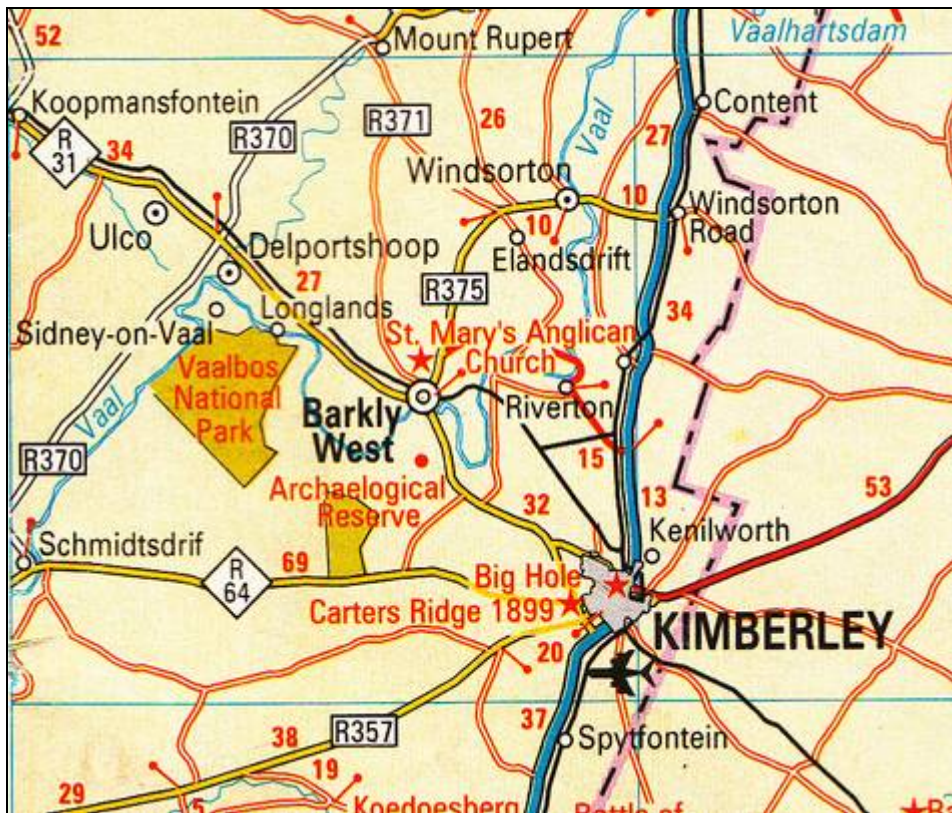
PISTORIUS, J.C.C. 1994. *Eskom Archaeological Site Identification Guide*. Johannesburg: Eskom.

ROSENTHAL, E. (n.d.). *The River of Diamonds*. Cape Town: Howard Timmins.

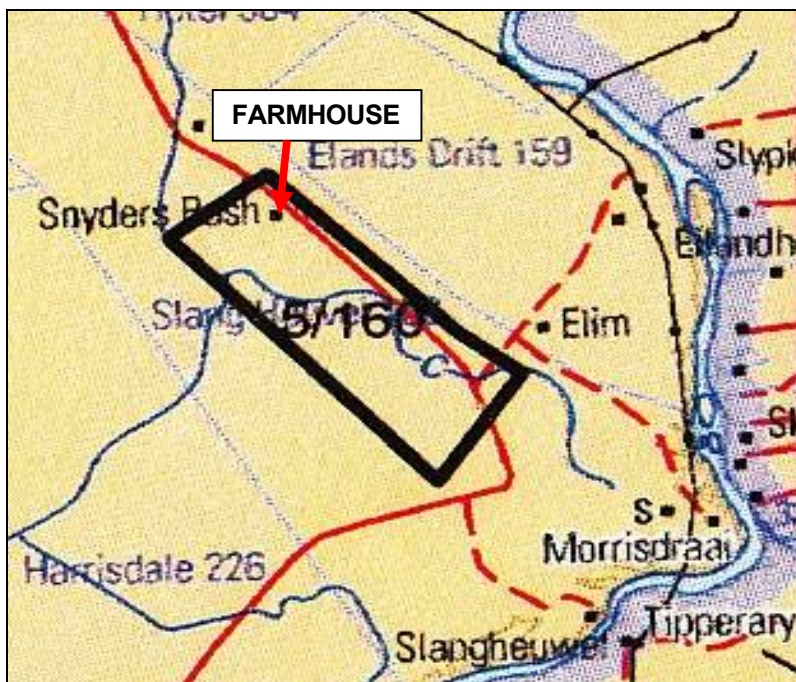
SMITH, A.B. (Ed.). 1995. *Einiqualand: Studies of the Orange River Frontier*. Cape Town: UCT Press.

SOHNGE, P.G. VISSER, D.J.L. AND VAN RIET LOWE, C. 1937. *The geology and archaeology of the Vaal River Basin*. Pretoria: Government Printer.

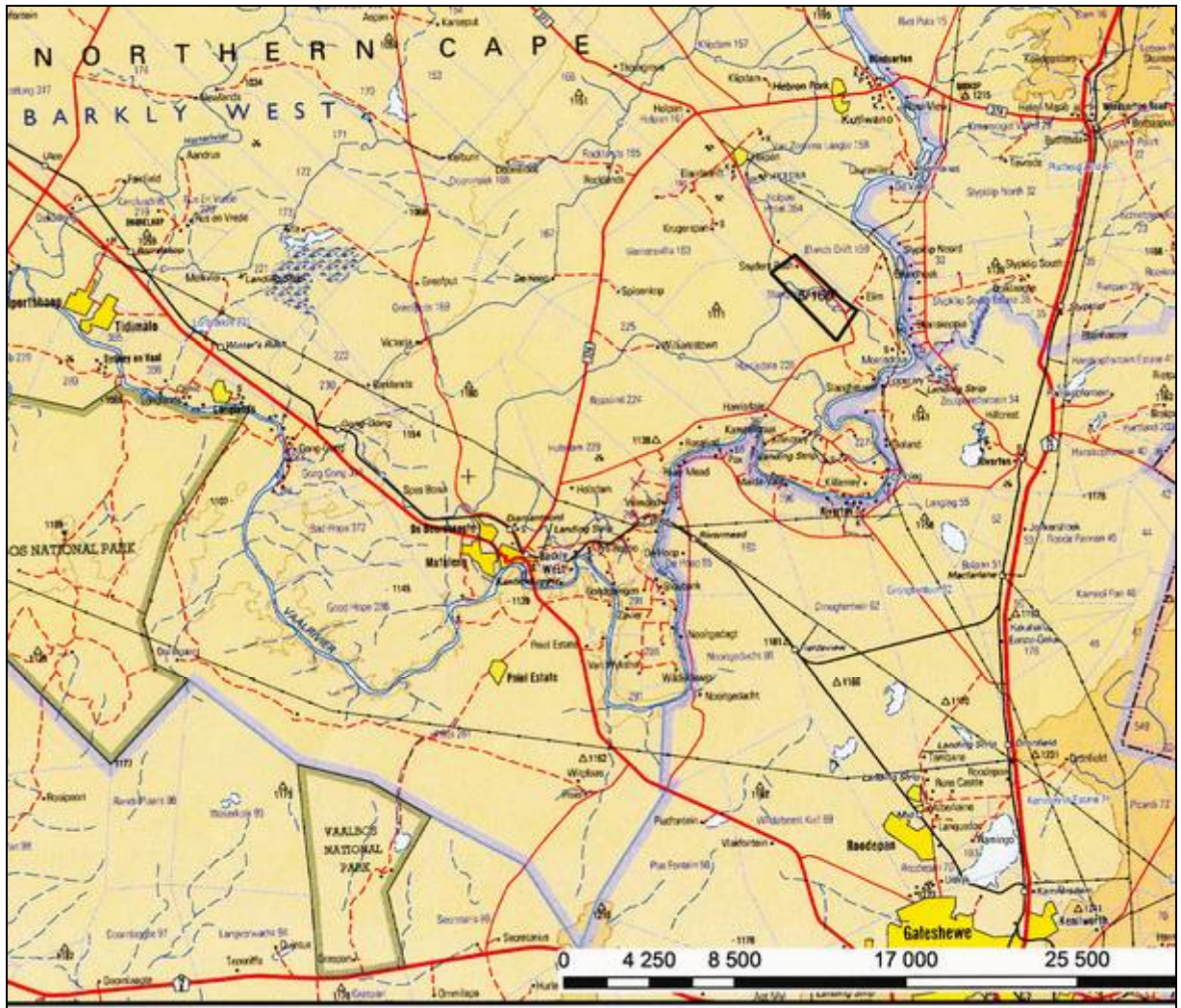
LIST OF ILLUSTRATIONS:



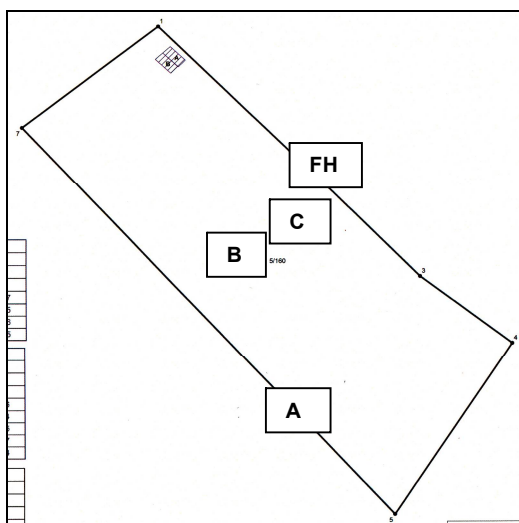
Map 1 Locality of Barkly West and Windsorton in relation to Kimberley, Northern Cape.



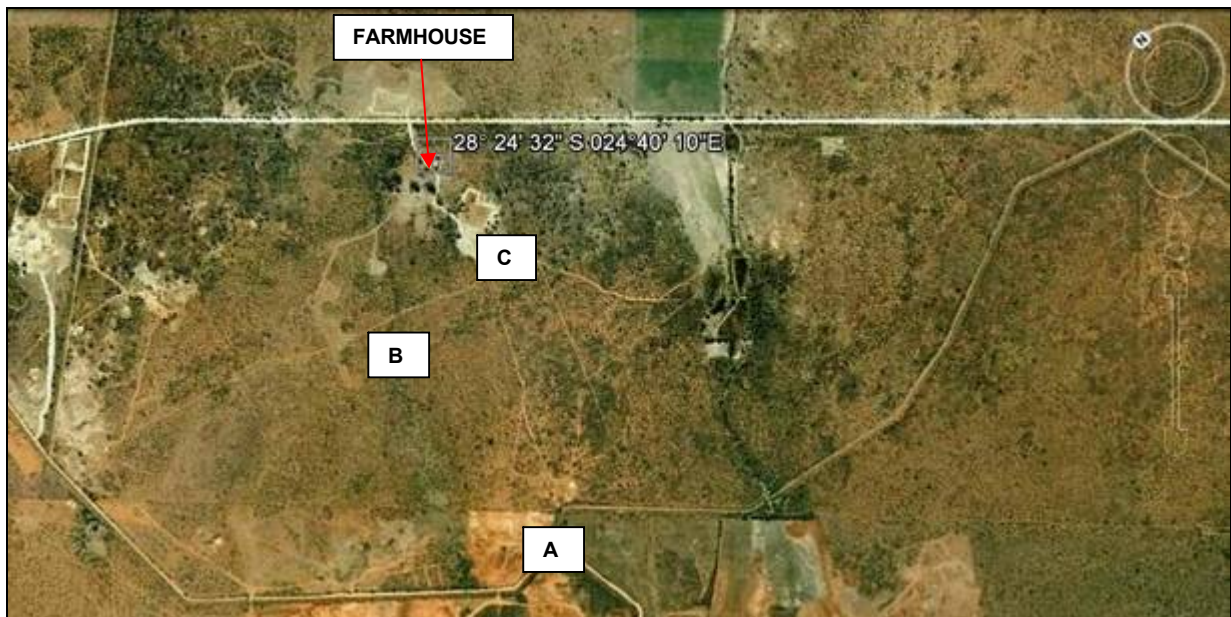
Map 2 The proposed land at Slang Heuvel.



Map 3 Locality of Slang Heuvel 160 (Snyders Rush), Barkly West (2824).



Map 4 Placing of GPs Coordinates Slang Heuvel 160 (Snyders Rush), Barkly West.



Map 5 Google image of the farm Slang Heuvel 160, Barkly West. GPS Coordinates indicated.



Fig.1 Farmhouse at Slang Heuvel 160, Barkly West.



Fig.2 Farmhouse at Slang Heuvel 160, Barkly West.



Fig.3 Point A at Slang Heuvel 160, Barkly West.



Fig.4 Point A at Slang Heuvel 160, Barkly West.



Fig.5 Point A at Slang Heuvel 160, Barkly West.



Fig.6 Point B at Slang Heuvel 160, Barkly West.



Fig.7 Point B at Slang Heuvel 160, Barkly West.



Fig.8 Point C at Slang Heuvel 160, Barkly West.



Fig.9 Point C at Slang Heuvel 160, Barkly West.



Fig.10 Old diggings near Point B at Slang Heuvel 160, Barkly West.



Fig.11 Old diggings near Point B at Slang Heuvel 160, Barkly West.



Fig.12 Old diggings near



Fig.13 Old diggings near Point B at Slang Heuvel 160, Barkly West.



Fig.14 Vegetation cover at Slang Heuvel 160, Barkly West.