



# **COBUS DREYER**

**Pr. Archaeologist/Heritage Specialist**

**P.O. Box 12910  
BRANDHOF 9324  
Bloemfontein  
dreyerj@telkomsa.net**

**Tel: 051-444 1187  
Fax: 051-444 4395  
Cell: 083 357 7982**

20 OCTOBER 2014

## **FIRST PHASE ARCHAEOLOGICAL & HERITAGE ASSESSMENT OF THE PROPOSED PV SOLAR ENERGY FACILITIES ON THE FARM BLAAUKRANTZ 144, DE AAR IN THE NORTHERN CAPE**

### **EXECUTIVE SUMMARY**

Solar Capital from Cape Town is planning the solar energy installation on the farm Blaaukrantz 144 near De Aar in the Northern Cape. The solar plant will cover an area of about 300ha. Eco-Compliance from Greenpoint, Cape Town, commissioned the archaeological and heritage assessment for the proposed project.

The development areas appear to be unspoilt land. Several collections of patinated and freshly broken flakes occur on the surface. The artefacts can roughly be classified as Middle Stone Age and appear to be part of a fairly general scatter in the specific area. The flakes are considered as insignificant for closer investigation.

A stone built wall and sangar with associated metal food containers dating from the Anglo-Boer War (1899-1902) were found next to the railway line.

I am of the opinion that the solar plant developments will have no major impact on the cultural, heritage or historical remains.

Further planning of the proposed project may continue and no mitigation measures will be needed.

### **INTRODUCTION & DESCRIPTION**

#### **Scope and Limitations**

Solar Capital from Cape Town is planning the solar energy installations on the farm Blaaukrantz 144 near De Aar in the Northern Cape. The solar plant will cover an area of about 300ha. Eco-Compliance from Greenpoint, Cape Town,

commissioned the archaeological and heritage assessment for the proposed piece of land. Additional particulars about the technical dimensions and impact of the installation and other developments at the site have not been supplied.

The investigation provided the opportunity to examine the proposed area. The soil surface consists of grass and Karoo shrub cover. These features did not have any effect on the survey and no limitations were experienced during the field work.

### **Methodology**

1. Standard archaeological survey and recording methods applied.
2. Survey of previous HIA reports in the area (SAHRIS).
3. Site inspection on foot and by vehicle.
4. Layout of the area and features plotted by GPS.
5. Surroundings and features recorded on camera.
6. Preparation of maps & literature.
7. Research on the history, archaeology & heritage remains.
8. Prepare map with coordinates transferred to Google Earth.

### **INVESTIGATION**

The topography and natural environment of the Karoo region is mainly determined by the geology. The vegetation can be described as Karoo or Hardeveld Shrub land. In general, the human impact on the environment is limited to stock farming activities in the form of farm roads, water reservoir dams, fences and windmills.

The study aims to locate and evaluate the significance of cultural heritage sites, archaeological material, manmade structures older than 60 years, and sites associated with oral histories and graves that might be affected by the proposed developments. In many cases, planted and self-sown trees and other types of vegetation form a major part of the historical environment of human settlements in villages and towns, on farmyards or even deserted places in the open veld. These features are taken into consideration during any cultural investigation.

The land was examined for possible archaeological and historical material and to establish the potential impact on any cultural material that might be found. The Heritage Impact Assessment (HIA) is done in terms of the National Heritage Resources Act (NHRA), (25 of 1999) and under the National Environmental Management Act, 1998 (Act. 108 of 1998).

## **HISTORICAL BACKGROUND OF THE AREA**

By the mid-1700s, there was a rapid expansion to the east and north east of the Cape Colony. A century later the north western boundary was running from Plettenberg's Beacon to Groot Tafelberg and to the south west, including the Upper (southern) portion of the drainage basin of the Zeekoei River. At the time White farmers were already settled on some of the historic farms in the Field-Cornetcy of Agter Sneeuberg in the Graaff-Reinet district (Webb 1958).

Accounts by early travellers mention the place and farm names in the area, which became fixed points on the land. Historians maintain that after the Nongqawuse catastrophe and the National Suicide of the Xhosa (1856-57), many Xhosa tribesmen fled the Transkei with their families to take refuge on White farms. According to oral traditions, it is assumed that these Xhosa-people were the builders of the stone walls on farms in certain parts of the Karoo and Eastern Cape (Bergh & Visagie 1985).

## **A BRIEF HISTORY OF DE AAR**

The name De Aar means "the artery", referring to the underground water supply. The first farms in this region were already occupied by 1837, but the discovery of diamonds in the Northern Cape, brought a need for a railroad connection between Cape Town and the Jagersfontein and Kimberley diamond fields. In 1881 the Cape Colonial Parliament voted to extend the railway line from Beaufort West and Colesberg to beyond the Orange River. The line was planned to follow the route via the settlement at De Aar. Because of its central location, the town later became a junction for other future railway extensions. The Friedlander brothers, emigrants from Latvia in the Ukraine, landed up at De Aar in 1883. They were to play a major role in the development and history of the town. Travelling by ox-wagon and trading along the way from Cape Town, they were able to negotiate a lease agreement with the land owner at De Aar. By 1884 they were running a general dealer's shop and hotel (also selling liquor) at the junction, with a postal agency and a bank, housed in the same wood and corrugated iron shop to follow soon.

During the Anglo-Boer War (1899-1902), the railway junction at De Aar became a centre of particular strategic importance as forwarding depot for troops and supplies to the battle front. The De Aar Hotel was occupied as headquarters by the British Military forces, and high ranking officials such as Lord Milner and Lord Roberts stayed there. With up to 20 000 people in town at times, business was outstanding and the Friedlanders made their fortunes. In the same year disaster struck and the brothers suffered a great loss when the hotel and everything burnt down. The military needed the building and fortunately for the Friedlanders, the British military force immediately assisted to rebuild the hotel and shop. The reconstruction was done with unbaked bricks and mortar in a Victorian style and judging by the brick laying methods it is possible that the builders could have

been from England or perhaps some of the soldiers. The postal agency and bank facilities were essential and were soon in operation again. Emblems of the various regiments were displayed on the dining room walls. It is claimed that these badges can still be seen as plaques made of plaster and painted in the official colours of the visiting regiments.

At the end of the war in 1902, the Friedlander brothers exploited the opportunity to purchase the farm for the establishment of a town. A surveyor from Cape Town was hired to lay out plots, not only for private homes, but for all kinds of public buildings such as schools, a market, hospital, sports grounds, City Hall and municipal offices, a court building and business plots. Several streets were named after members of the family. The Friedlanders were very generous, for all religious denominations received their plots free of charge together with several more plots to sell, in order to raise funds to erect buildings. The town plans made provision for wide streets and broad pavements, and residential areas were set aside for the European, coloured and black populations. In the same year the first stands were sold by public auction and the Municipality of De Aar was instated in 1904, while the first mayor was elected in 1907. The rapid progress of the town went hand-in-hand with the expansion of the railway network. The surrounding farming community gradually started doing their business here and through the years, De Aar has become the lifeblood of the Karoo (Smit 1963). As in many other cases in the rural areas at present, the town has lost its significance as a railway depot and, despite its strategic placing the rapid deterioration of infrastructure and municipal services in the town is obvious.

## **CULTURAL BACKGROUND TO THE AREA**

Karoo farmsteads usually have large refuse dumps accumulated over almost a century. The investigation of these features produces a rapid and effective indication about the lifestyle and social habits of the people. It also reveals the availability of household utensils in the 18<sup>th</sup> and 19<sup>th</sup> centuries, where finds such as cartridge cases, glass and porcelain fragments, glass bottles, wire, nails, and other metal objects are valuable (Dreyer 2005-2012, Orton & Webley 2013).

It is clear that the cultural environment of the Karoo in general and the De Aar region in particular has already been affected significantly by normal farming activities, road building and the erection of solar installations and high voltage power transmission lines over many years.

## **ARCHAEOLOGICAL BACKGROUND TO THE AREA**

Information on the pre-colonial archaeology of the area is derived from a number of impact assessments, which have been undertaken (Dreyer 2004-2012, Dreyer 2014, Van Ryneveld 2008, Becker 2012, Booth & Higgett 2010, Fourie 2012,

2014, Kaplan 2010, Kruger 2012, Morris 2011, Orton 2011, 2012). Previous heritage impact assessments in the Beaufort West, Hanover and Richmond areas and specifically in the Nuweveld Mountains near Beaufort West, have likewise produced records of unidentified stone heaps and paved areas, trihedral Acheulian or Victoria West I hand axes and bifacial worked Oldowan choppers with minimum retouch. Small assemblages of Later Stone Age flaked scrapers occur and isolated flakes and core flakes with small, prepared percussion platforms are found scattered in certain areas, with distributions of waste flakes and flaked cores in other places.

A few individual and isolated fragments of ostrich eggshell were found on an alluvial sand deposit along the Leeu River and also near the Sand River. Some of the sites produced solitary ostrich eggshell bead (Dreyer 2005, 2009, 2010, 2012).

Our major source of archaeological knowledge comes from an intensive research project in the drainage basin of the upper Seacow valley, by Garth Sampson (1985), an expert archaeologist from the University of Cape Town. Archaeological research along the Orange River and in the upper Seacow Valley over several decades produced a considerable amount of information. These field surveys along Orange River between Vanderkloof Dam and the Gariep Dam, as well as the upper Seacow River Valley in the regions of Hanover, to the north east of our present area, have identified stone artefact assemblages of great archaeological significance. The published records on material finds include a wide range of objects from the excavations, mainly in rock shelters and confirm the richness of archaeological finds in the region.

These papers include reports on stone artefacts (Peace 1993), macro-fauna (Plug 1993), livestock (Plug, Bollong & Sampson 1994), glassware and metalwork (Crass & Sampson 1993a), old European clothing (Crass & Sampson 1993b), European and oriental ceramics (Moir & Sampson 1993), glass trade beads (Saitowitz & Sampson 1992), Bushmen tobacco and cannabis dependency (Sampson 1993), and the role of ostrich eggs in Bushmen existence (Sampson 1994).

Later Stone Age pottery finds were described by Sampson & Sadr (1999.) and the ceramic sequence of the area was compiled (Sampson, Hart, Blagg & Wallsmith 1989). A radiocarbon chronology of the Later Stone Age pottery decorations was compiled (Sampson & Vogel 1995) and Late Holocene and historical bone midden density in rock shelters were calculated (Sampson & Plug 1993). European livestock in rock paintings were recorded (Voigt, Plug & Sampson 1995), while the acquisition of guns by the Bushmen of the Seacow valley was discussed (Westbury & Sampson 1993).

For the purpose of this report, Sampson's "Atlas of Stone Age Settlement" (1985) is particularly valuable. His cultures were amalgamated into three groups,

namely, Early Stone Age, Middle Stone Age and Later Stone Age. The localities where concentrations of Early Stone Age and Middle Stone Age artefacts occur are too few to define a pattern. It is only in the case of the Later Stone Age where a clustering of flakes can be identified in an area ranging from Schanskraal Manor (Roelofsfontein) near Richmond to a position against the slope of the hill one kilometre to the north east.

Matching artefacts were found during the heritage impact assessments at De Aar 180/1 (Badenhorst Dam Farm) (Kruger 2013, Orton & Webley 2013). A heritage impact assessment at Sinclair's Dam 133 near De Aar produced similar patinated Middle Stone Age artefacts. The investigation also brought up a few hand axes from the Fauresmith cultural tradition (Van Ryneveld 2008).

According to the tourism brochure on Richmond, San rock art is found on Schanskraal Estate. The contention of a Khoikhoi (Hottentot) and San (Bushmen) co-existence here is debatable and somewhat ambiguous. According to early travellers Khoi tribes were settled further away along the base of the Great Escarpment (Dreyer & Looock 2012). San rock engravings were recorded on the farms Nooitgedacht and Brandfontein near De Aar.

Another significant aspect of the Karoo archaeology is the presence of many prehistoric stone built enclosures or kraals. The Seacow River valley, east of our present study area has revealed these kraals (Sampson 1984, 1985, 1986, 2010, Huffman 2013, Orton & Webley 2013). The kraals are typically constructed on sloping ground against dolerite ridges overlooking water sources. Domestic debris and stone artefacts are seldom associated, but are taken to represent either the pastoralists camping sites alongside their kraals or else later re-occupation of the kraals by hunter-gatherer people (Sampson 1985). While no kraals were located during the initial survey, a number of small circular stone features were found (Orton 2011, Fourie 2011; Morris 2012). While pottery is often taken to signify pastoralist occupation, Sampson (2010) and others, (Bollong et al. 1993, 1997) have shown that some pottery shows fibre temper, possibly made by Bushmen hunter-gatherers rather than Khoi pastoralists.

As a result of the general lack of datable occurrences, the Later Stone Age artefacts found in the Karoo are not clear. Few rock shelters have been excavated (e.g. Hart 1989) and the majority of occurrences are open scatters of artefacts without any associated organic materials. It appears that the earlier periods of the Later Stone Age are poorly represented in the Karoo, while sites dating to the last few thousand years are routinely found. Most Later Stone Age artefacts in the central Karoo region are made from hornfels (lydianite or indurated shale).

## **DE AAR DURING THE ANGLO-BOER WAR (1899-1902)**

The Anglo-Boer War military history is well represented in the region around De Aar. The British strategy to safeguard the Cape Colony against Boer invasions from the north was to hold the railway line running for up to 60 miles south of the Orange River. De Aar and other main junctions at Noupoot and Stormberg were consequently garrisoned. De Aar, being the most important of the three, was held by the Yorkshire Light Infantry and a locally created unit of Rimington Scouts. In December 1899, the De Aar garrison had been increased by troops from the 2nd Warwickshire, 1st Yorkshire and 1st Essex Regiments, with a further two Companies of Mounted Infantry added. From November 1900, De Aar and Orange River area became a large military warehouse. The defences were further strengthened by regular scouting patrols in the vicinity.

Lord Methuen's preparation for the attack on Magersfontein (11 December 1899) and Lord Roberts's advance on Bloemfontein (March 1900), entailed the concentration of thousands of men, horses, guns, wagons and carts and tons of military stores between the Orange River and Modder River stations. De Aar became the controlling centre of these operations, with a large build-up of reserves and rations in the advance supply depot. The junction at De Aar became a major distribution point also comprising remount camps, weaponry and medical supplies as well as an important military hospital centre (De Villiers 2008), with the well equipped Imperial Yeomanry Hospital at Deelfontein siding, 46km south of De Aar (Watt 1987) to play a major role in the British Field Force operations in South-Africa.

From mid-December 1900, De Aar figured in active war operations when Gen Hertzog's Boer commando, after crossing the Orange River at Zand Drift north of Colesberg, moved south into the Cape Colony. The Boers occupied Philipstown on 19 December, only to have their passage to the south blocked by a strong British force at Hanover Road. Hertzog moved west, engaged an armoured train at Houtkraal on the De Aar–Orange River railway line. Some of his men managed to cross the line at this point, while the remainder had to go over the line south of De Aar. Both sections converged on Britstown and on their way overwhelmed several companies of Yeomanry which had been sent against them from De Aar.

In January 1901, Gen de Wet also crossed the Orange River some distance west of Philippolis in the Free State, and marched westwards to operate in the De Aar – Prieska – Douglas – Hopetown area. Skirting the Orange River until February 1901, when he crossed the river at Botha's Drift south east of Philippolis, Gen Hertzog followed close on his heels across the De Aar – Hopetown railway line on the way back to the Free State.

Commandant Edwin Alfred Conroy saw action during the Anglo-Boer War as a Rebel from Britstown in the Cape Colony. He joined the Boer forces in December 1900 and was active in the Britstown, De Aar and Houwater area and operated as far as Petrusburg in the Free State. Conroy later joined forces with Gen Manie

Maritz in the Northern Cape, where they remained when peace was declared in May 1902 (Roodt 1998, Pieterse 1941). Although rare in some places and abundant in others, food tin cans and lids originating from Anglo-Boer War (1899-1902) period, British army rations could also be found. The cans are recognised by heavy soldering on the seams.

Buried in the Garden of Remembrance at De Aar are 182 soldiers and 7 members of the Imperial Military Railway staff. The remains of six soldiers previously buried at Houtkraal have also been re-entered here.

### **FIRED CARTRIDGE CASES**

According to early travellers, firearms came into use in the Karoo region from about 1770 (Westbury & Sampson 1993). From the mid-19<sup>th</sup> century onwards, fired cartridge cases produce a vivid narrative of the different kinds and trends in firearms and ammunition. It also offers a method for relative dating (Dreyer 1994). Gunflints, melted lead and copper percussion caps used with muzzle-loading rifles, could also turn up in the area (Loock 2003, Bester 2003).

Cartridge cases and bullets of a later period could be found in the veld and on the ash heaps at the different farms yards. These finds represent a long period of European occupation throughout the 18<sup>th</sup> and 19<sup>th</sup> centuries before and during the Anglo-Boer War, and later during the First World War (WWI 1914-1918), Second World War (WWII 1939-1945) and the Angolan Bush War in the 1960s and 1970s. In many other cases, military ammunition has been used for hunting purposes and target shooting practice.

### **TABLE WARE**

The middens on the different farms in the Karoo and the Northern Cape represent a long time span of European occupation. The ash heaps contains fragments of glass, porcelain, stoneware and ash from kitchen fires, bottles, lids and various metal containers. Colourful fragments of Sponge Ware crockery (Fig.23) could also be found (Dreyer 2010). Some of these domestic vessels date back to the 18<sup>th</sup> century but became very popular from about 1830 to 1880 (Trehaven 1996).

This kind of tableware was manufactured at Staffordshire, in the United Kingdom, where separate designs had been selected for the different British Colonies. It is reported that a specific line was directed to America (known as "spatter ware" in the US), another shipment for South Africa and yet another line to be forwarded to Australia. The porcelain had been described as relatively inexpensive or affordable and was very popular amongst the European immigrants in South Africa, where it was considered to be for everyday household use. Hence the



common name of Voortrekker crockery or “Boerenbont” (bont = multi-coloured). Because of the fact that it was handmade, it could be acquired at a rather affordable price. It is claimed that the same kind of sponge-decorated tableware is still available from Staffordshire at present, but because of the fact that it is hand-made, it is very expensive to buy (Trehaven 1996).

## **GRAVES**

Most farms in the Karoo have sizeable cemeteries with graves of European settlers and their families and farm labourers, sometimes dating back to the 18<sup>th</sup> and 19<sup>th</sup> centuries (Dreyer 2005, 2010).

## **BURNT KRAAL DUNG**

The detection and investigation of vitrified dung from archaeological and historical sites in the Free State and the Karoo started a number of years ago (Dreyer 1992, 1997; Jacobson, Looek, et al. 2003). Field workers and scientists are rapidly becoming aware of this phenomenon in parts of the central regions and new sites with burnt dung from old stock enclosures are discovered regularly. Finds include areas in the Beaufort West (Dreyer 2010), Somerset East, Klaarstroom and Loxton districts in the Eastern and Northern Cape and at the farm Brandkraal near Murraysburg in the Karoo (Van Heerden 1969).

Recent research results have developed into an escalating new source of information on different animal species and their grazing habits (Carrión, Scott, et.al 2000, Jacobson, Looek, et. al 2003). It is anticipated that farms in the De Aar region would be no exception in this regard and any samples of the vitrified material will be analysed at the Geology Department, University of the Free State, Bloemfontein.

## **LOCALITY**

Solar Capital from Cape Town is planning the solar energy installation on the farm Blaaukrantz 144 near De Aar in the Northern Cape (Maps 1&2). The solar plant will cover an area of about 300ha (Map 3). Eco-Compliance from Greenpoint, Cape Town, commissioned the archaeological and heritage assessment for the proposed piece of land. Further information about the technical extent and impact by the installation and other developments at the site has not been supplied.

The following GPS co-ordinates were taken (Cape Scale) (Maps 3&4).

<b>A</b>	30°33'06"S	023°58'04"E.	Alt 1204m (Fig.1).
<b>B</b>	30°33'27"S	023°58'05"E	Alt 1221m (Fig.2).
<b>C</b>	30°33'11"S	023°58'22"E.	Alt 1226m (Fig.3).
<b>D</b>	30°32'39"S	023°58'13"E.	Alt 1207m (Fig.4).
<b>E</b>	30°32'16"S	023°59'31"E	Alt 1228m (Fig.5).
<b>F</b>	30°31'35"S	023°59'06"E.	Alt 1223m (Fig.6).
<b>G</b>	30°33'00"S	023°59'07"E.	Alt 1218m (Fig.7).
<b>H</b>	30°34'53"S	024°01'17"E.	Alt 1218m (Fig.8).
<b>J</b>	30°34'50"S	024°01'43"E.	Alt 1220m (Fig.9).
<b>K</b>	30°34'15"S	024°01'53"E.	Alt 1234m (Figs.10-13).
<b>L</b>	30°33'37"S	024°01'59"E.	Alt 1253m (Fig.15).

## RESULTS

## DISCUSSION

Karoo farmyards generally have large ash heaps. The investigation of these features normally produces a prompt indication of the lifestyle and social habits of the community. It also explains the availability of household utensils during the 18<sup>th</sup> and 19<sup>th</sup> centuries. In these cases, finds of glass and porcelain fragments, glass bottles, short strips of wire, nails, and other metal objects are important. The destruction or vandalising of ash heaps on Karoo farms will result in the loss of a significant part of our heritage. It is clear that the early European occupation of the Karoo and the Cape Province south of the Orange River predates the settlements to the north by almost a century. This is also reflected in the cultural remains contained in the house middens.

According to early travellers, muzzle loader firearms came into use in this region round about 1770. From the mid-19<sup>th</sup> century, fired cartridge cases are found on the ash heaps or in the open veld. These finds produce a vital description of the different kinds and user trends in firearms and ammunition.

Farmsteads in the Karoo are clearly older than sixty years. Most of these structures are well maintained and in a good state of preservation. Farm

buildings such as wagon houses, stables and kraals, sheep dips and other stone wall enclosures, represent outstanding examples of excellent skills and stone building techniques.

The lithic assemblages found during the investigation seem to be concentrated on the higher points overlooking the natural water sources.

## **FINDS**

Several heritage impact assessments at De Aar, recorded a variety of Middle Stone Age flakes and cores. The majority of the finds represent heavily patinated stone flakes and scrapers (Becker 2012, Orton 2012, Van Ryneveld 2008, Dreyer 2014).

In the present case at Blaaukrantz 144 (Maps 2&4), several clusters of highly patinated flakes occur in the areas around Points C, D, F, K. and J (Figs. 18,19, 21, 22), while flakes from Points C and G (Figs. 16, 17. 20), have freshly broken surfaces. The samples are limited, but the patinated flakes and scrapers show convergent flaking on the dorsal surface.

Although the farm Blaaukrantz 144 in the De Aar district, is located in a potentially rich cultural and historically area, the archaeological remains are of an insignificant standard and no specific manufacturing sites occur. The stone flakes seem to be a distribution of waste flakes and flaked cores. The flakes are unutilised and cannot be described as “tools”. The artefacts were made from the local lithic sources of chert and lydianite and through the application of standard tool typologies and basic characteristics the material could arbitrarily be classified as Middle Stone Age.

A stone built wall and sangar with associated metal food containers dating from the Anglo-Boer War (1899-1902) were found next to the railway line.

No graves or possible grave sites were found. We questioned the farm owners about the localities of graves, but none were reported to us. It should be kept in mind that pre-colonial graves are often unmarked and can be located at any place where the soil is suitable for digging a grave.

## **IMPACT ASSESSMENT**

This Heritage Impact Assessment report identifies and evaluates the impacts of the proposed developments on the heritage resources of the site.

At present the archaeological material is widespread but seems to be limited to higher lying areas and could be considered as of limited significance. Although

the archaeological material is sparsely scattered and of minor significance, the installation of solar panels will have no major impact on the archaeological heritage resources during the construction phase.

A visual impact on the local landscape will undoubtedly be the major impact left by the construction of the proposed solar panels. Similar future developments could have an even greater impact on the surrounding landscape.

## **RECOMMENDATIONS**

The present heritage impact assessment confirms that there will be an insignificant impact on archaeological material at the different sites. As an emotional observation, it is foreseen that there will be an impact on the cultural landscape of the area. Archaeological and heritage sites are of minor concern and can be mitigated if required, but the impact on the landscape will be more substantial and cannot easily be concealed. Given the scale of solar power installations planned for the region, there is little sense in attempting to shield the presently proposed developments.

The construction of the proposed developments seems feasible and there are no obvious reasons strong enough to delay further planning of the developments at the specific site.

I recommend that the planning of the proposed prospecting developments may proceed.

## **MITIGATION**

No mitigation measures will be required in case of the present developments. It is important to remember that the developments should be placed at least 500m from any heritage sites.

The fieldwork in the Karoo offered a pleasant and rewarding experience of this exceptional and unique part of the country. It is sad though, that the tranquil atmosphere and unspoilt character of the open spaces of the Karoo landscape will ultimately be ruined by the proliferation of fracking and the production of earth gas. The impact of the solar energy installations on the general landscape in the vicinity of De Aar will likewise be severe and a loss of context and sense of place will be considerable. There is little one can do to ease the impact and we can only hope that the major part of the development will be shielded by the surrounding landscape.

**ACKNOWLEDGEMENTS**

I thank the official from Eco-Compliance in Greenpoint for directions to the site. Dr Johan du Preez accompanied me on the field trip to De Aar.

I thank Dr Johan C. Loock, PhD (HC) from Bloemfontein for clearing up the Karoo geology and local Anglo-Boer War history in an exceptional way.

I also owe gratitude to Mohlalefe Seleke for assistance and encouragement to complete the research and to prepare the paper.

**SELECT BIBLIOGRAPHY:**

- BECKER, E. 2012. Phase 2 Heritage Impact Assessment De Aar Solar One Photovoltaic Power Project. Hatch Africa.
- BERGH, J.S. & VISAGIE, J.C. 1985. The Eastern Cape Frontier Zone 1660-1980. Butterworths, Durban.
- BESTER, R. 2003. Small Arms of the Anglo-Boer War 1899-1902. Brandfort: Kraal Publishers.
- BESTER, R. 2003. Boer Small Arms Ammunition. Chapter 13 (p.301-327) In: BESTER, R. 2003. Small Arms of the Anglo-Boer War 1899-1902. Brandfort: Kraal Publishers.
- BOLLONG, C.A., SAMPSON, C.G. & SMITH, A.B. 1997. Khoikhoi and Bushman pottery in the Cape Colony: Ethno-history and Later Stone Age ceramics of the South African interior. *Journal of Anthropological Archaeology* 16: 269-299.
- BOLLONG, C.A., VOGEL, J.C., JACOBSON, L., VAN DER WESTHUIZEN, W. & SAMPSON, C.G. 1993. Direct dating and identity of fibre temper in pre-Contact Bushman (Basarwa) pottery. *Journal of Archaeological Science* 19: 41–55.
- BOOTH, C. & HIGGETT, N. 2010. An archaeological desktop study for the proposed Karoo renewal energy facility on a site south of Victoria West, Northern and Western Cape Province. Savannah Environmental, Sunninghill.
- CARRIÓN, J.S., SCOTT, L., HUFFMAN, T. & DREYER, C. 2000. Pollen analysis of Iron Age cow dung in southern Africa. *Vegetation History and Archaeobotany* 9:239-249.
- CLARK, J.D. 1959. The Prehistory of Southern Africa. Pelican Books, London.
- CRASS, D.C. & SAMPSON, C.G. 1993. Glassware and metalwork acquired by the Seacow River Bushmen. *Martevaan. Newsletter of the Cape Historical Archaeology Association* 9:3-13.
- CRASS, D.C. & SAMPSON, C.G. 1993. 'A few old clothes': European dress adopted by the Seacow River Bushmen. *Africana Notes and News* 30:219-234.
- DEACON, J. 1992. Archaeology for Planners, Developers and Local Authorities. Cape Town: National Monuments Council.
- DE VILLIERS, J.C. 2008. Healers, Helpers and Hospitals – A History of Military Medicine in the Anglo-Boer War. Protea Book House, Pretoria.
- DREYER, J. 1994. Cartridges and chronology - an exercise in relative dating. Grahamstown: Albany Museum. *Southern African Field Archaeology* 3(1):44-48.
- DREYER, J. 1997. Slag from Late Iron Age sites: Metal-working or cow dung?: In: van Schalkwyk, J. (Ed.). *Studies in Honour of Professor J F Eloff*. Pretoria: Research by the National Cultural History and Open-Air Museum 6:94-103.

DREYER, J. 2004. First phase heritage / archaeological assessment of the borrow pits on the R384 (MR768) road, Vosburg/ Carnarvon, Northern Cape. EIA Report for CEBO Environmental Consultants, Bloemfontein.

DREYER, J. 2004. Archaeological and historical investigation of the proposed developments at the sewerage dams, Fraserburg, Northern Cape. EIA Report for Fraserburg Municipality.

DREYER, J. 2004. Archaeological and historical investigation of the proposed feed lot at Colesberg, Northern Cape. EIA Report for Geo Pollution Technologies, Bloemfontein.

DREYER, J. 2005. Archaeological and historical investigation of the proposed new borehole and pipeline installation at Hanover, Northern Cape. EIA Report for CEBO Environmental Consultants, Bloemfontein.

DREYER, J. 2005. Archaeological and historical investigation of the proposed residential developments at the farms Grootfontein 180 & Bushmans Kop 302, Beaufort West, South-Western Cape. EIA Report Mr Christie Mocke, Paardefontein, Beaufort West.

DREYER, J. 2006. First phase archaeological and cultural heritage assessment of the proposed new oxidation ponds at Prieska, Northern Cape. EIA Report for MDA Environmental Consultants, Bloemfontein.

DREYER, J. 2006. Archaeological and cultural heritage investigation of the proposed Eskom Hydra-Perseus & Beta-Perseus transmission line at the farm Jackalskuil 21, Petrusville, Northern Cape. EIA Report for J.W. de Villiers, Jackalskuil, Petrusville.

DREYER, J. 2006. First phase archaeological and cultural heritage investigation of the proposed township developments at Greenfields, Colesberg, Northern Cape. EIA Report for MDA Environmental Consultants, Bloemfontein.

DREYER, J. 2006. First phase archaeological and cultural heritage assessment of the proposed borrow pit sites along the MR768 road between Britstown & Vosburg, Northern Cape. EIA Report for MDA Environmental Consultants, Bloemfontein.

DREYER, J. 2007. Archaeological and cultural heritage assessment of the proposed diversion of the divisional road 3112 (R369) on the farm Pampoepenpan 35/259, Douglas, Northern Cape. EIA Report for MDA Environmental Consultants, Bloemfontein.

DREYER, J. 2007. First phase archaeological and cultural heritage assessment of the proposed borrow pit sites along the R63 road between Carnarvon & Williston, Northern Cape. EIA Report for MDA Environmental Consultants, Bloemfontein.

DREYER, J. 2007. First phase archaeological and cultural heritage assessment of the proposed borrow pit sites along the DR2996 & DR2337 roads to the telescope site, Carnarvon, Northern Cape. EIA Report for MDA Environmental Consultants, Bloemfontein.

DREYER, J. 2007. First phase archaeological and cultural heritage investigation of the proposed upgrading of the oxidation pond system at Carnarvon, Northern Cape. EIA Report for MDA Environmental Consultants, Bloemfontein.

DREYER, J. 2008. First phase archaeological and cultural heritage investigation of the proposed Copperton-Van Wyksvlei water pipe line, Northern Cape. EIA Report for MDA Environmental Consultants, Bloemfontein.

DREYER, J. 2008. First phase archaeological and cultural heritage assessment of the grave site along the DR2996 & DR2337 roads, Carnarvon district, Northern Cape. EIA Report for Ninham Shand, Kimberley.

DREYER, J. 2008. First phase archaeological and cultural heritage investigation of the proposed water pipe line from the Toll Gate pump station to Colesberg, Northern Cape. EIA Report for MDA Environmental Consultants, Bloemfontein.

DREYER, J. 2008. Archaeological and cultural heritage assessment of the proposed MTN mast at the farm Elandsdraai 88, near Orange River Station, Hopetown district, Northern Cape. EIA Report for Enviroworks Environmental Consultants, Bloemfontein.

DREYER, J. 2009. First phase archaeological and cultural heritage assessment of the proposed rehabilitations of the N9, Section 7 between Carlton Heights to Wolwefonteinspruit, Noupoot, Northern Cape. EIA Report for MDA Environmental Consultants, Bloemfontein.

DREYER, J. 2009. Archaeological and historical investigation of the proposed upgrading of the waste water treatment installation at Hanover, Northern Cape. EIA Report for MDA Environmental Consultants, Bloemfontein.

DREYER, J. 2009. First phase archaeological and cultural heritage investigation of the proposed water pipe line from the Toll Gate Pump Station to Colesberg, Northern Cape. EIA Report for MDA Environmental Consultants, Bloemfontein.

DREYER, J. 2009. Archaeological and historical investigation of the proposed Eskom 22Kv power line from La-De-Da to Wolwehoek, Beaufort West, South-Western Cape. EIA Report for Eskom Beaufort West.

DREYER, J. 2010. Archaeological and historical investigation of the proposed Eskom 22KV power line Doornboomfontein, Matjiesfontein, Klawerfontein & Klawervlei to Leeukloof, Beaufort West, South Western Cape. EIA Report for ESKOM, Beaufort West.

DREYER, J. 2010. Archaeological and historical investigation of the proposed Eskom 22KV power line Leeukloof – Bultfontein – Gansfontein, Beaufort West, South Western Cape. EIA Report for ESKOM, Beaufort West.

DREYER, J. 2010. Archaeological & heritage investigation of the proposed diamond prospecting & mining activities at Viletskuil 198, Koringdal, Kareelaagte, Bitterput & Paardekraal, Wonderput, De Voor, Tevreden, Annex Springbokrug, Teleurgesteld, Strydenburg district, Northern Cape. EIA Report for Geo-Rock International Consultants, Kimberley.



DREYER, J. 2010. First phase archaeological and heritage assessment of the borrow pit at "The Mills" near Hanover, Northern Cape. EIA Report for Incline Environmental Consultants, Bloemfontein.

DREYER, J. 2011. First phase archaeological and heritage assessment of the mining developments at the farm Saxendrift 20, near Douglas, in the Hopetown district, Northern Cape. EIA Report for Mr Eddie Faber from Douglas.

DREYER, J. 2011. First phase archaeological & heritage investigation of the proposed extensions at the Municipal dolerite quarry on Erf 675, Colesberg, Northern Cape. EIA Report for Enviroworks Environmental Consultants, Bloemfontein.

DREYER, J. 2011. Archaeological and historical investigation of the proposed Eskom 22KV power line Doornboomfontein, Matjiesfontein, Klawerfontein & Klawervlei to Leeukloof, Beaufort West, South Western Cape. EIA Report for ESKOM, Beaufort West.

DREYER, J. 2011. Archaeological & heritage investigation of the proposed MTN cell phone mast at Breekkierie near Kenhardt, Northern Cape. EIA Report for Spatial Solutions Incorporated, Environmental Consultants, Bloemfontein.

DREYER, J. 2011. First phase archaeological and heritage assessment of the proposed township developments at Hanover, Northern Cape. EIA Report for Stabilis Developments, Upington.

DREYER, J. 2011. Letter of recommendation for the exemption from a first phase archaeological & heritage investigation of the stone quarry at Vrischgewaagd 554, near Cradock, Eastern Cape. EIA Report for Enviroworks Environmental Consultants, Cape Town.

DREYER, J. 2012. Letter of recommendation for the exemption from a first phase archaeological & heritage investigation of the proposed establishment of a Photovoltaic (solar power) installation on the farm Wicklow 218, near Hopetown, Northern Cape. EIA Report for Scatec Solar Consultants, Port Elizabeth.

DREYER, J. 2012. First phase archaeological and heritage assessment of the PV solar power plant at the farm Soutgat, near Prieska, Northern Cape. EIA Report for Nare Sereto Environmental Consultants, Heidedal, Bloemfontein.

DREYER, J. 2012. First phase archaeological and heritage assessment of the diamond mining developments at the farm Blaauplaats (Farm 23), near Prieska, Northern Cape. EIA Report for Rock-Runner, Environmental Consultant, Kimberley.

DREYER, J. 2013. First phase archaeological & heritage assessment of the diamond mining developments at De Kalk 37, Hopetown, Northern Cape. EIA Report for Milnex, Schweizer Reneke.

DREYER, J. 2014. First phase archaeological & heritage assessment of the proposed PV Solar energy facilities on the farm Loskop 145, De Aar in the Northern Cape. EIA Report for Eco-Compliance from Greenpoint, Cape Town.

DREYER, J. 2014. First phase archaeological & heritage assessment of the proposed PV Solar energy facilities on the farm Caroluspoort 146, De Aar in the Northern Cape. EIA Report for Eco-Compliance from Greenpoint, Cape Town.

DREYER, J. & LOOCK, J.C. 2014. Desktop archaeological, palaeontological & heritage assessment of the farm ElandsKloof 121 (Schanskraal), Richmond, Northern Cape Province. EIA Report for SKR Consulting, Rondebosch & Ranor Karoo Farm Holdings.

Fourie, W. 2012. Concentrated solar power – De Aar. Heritage Impact Assessment. Unpublished report prepared for SiVEST Environmental Division. PGS Heritage & Grave Relocation Consultants.

FOURIE, W. 2014. Proposed construction of a 32kV transmission line from the Longyuan Mulilo, De Aar 2 North Wind Energy Facility on the Eastern Plateau (De Aar 2) near De Aar, Northern Cape. Heritage Impact Assessment Report Aurecon South Africa, Johannesburg.

HART, T.J.G. 1989. Haaskraal and Volstruisfontein: Later Stone Age events at two rock shelters in the Zeekoe Valley, Great Karoo, South Africa. Unpublished M.A. dissertation, University of Cape Town.

HOGG, I.L. 1982. The Cartridge Guide. London: Arms & Armour Press. 192pp.

HUFFMAN, T.N. 2013. Archaeological Impact Assessment for the De Aar Project, Northern Cape. Phase I report prepared for Seaton Thompson & Associates, Irene.

HUMPHREYS, A.J.B. 1972. Comments on raw material usage in the Later Stone Age of the Middle Orange River area. S.Afr.Archaeological Soc., Goodwin Series 1:46-53.

HUMPHREYS, A.J.B. 1986. Searching for the past. Cape Town: David Philip.

JACOBSON, L.; LOOCK, J.C., VAN DER WESTHUIZEN, W.A., HUFFMAN T.N. & DREYER, J.J.B. 2003. The occurrence of vitrified dung from the Kamdeboo district, southern Karoo, and Den Staat, Limpopo Valley, South Africa. South African Journal of Science 99:26-28.

JONES, H.M. & M.G.M. JONES, 1999. A gazetteer of the Second Anglo-Boer War (1899-1902). Buckinghamshire: The Military Press.

KAPLAN, J. 2010. Archaeological Impact Assessment for a proposed photovoltaic (PV) power generation facility in De Aar in the Northern Cape Province. Agency for Cultural Resource Management.

KAPLAN, J. 2010. Archaeological Scoping Study of a Proposed Wind Energy Facility on the Maanhaarberge & Kombuisfonteinberge, De Aar, Northern Cape.

KRUGER, N. 2012. Archaeological impact assessment (AIA) of demarcated surface areas on the of the farm Vetlaagte 4, De Aar, Northern Cape Province. Unpublished report prepared for Ennex Developments. Lynnwood: AGES (Pty) Ltd.

- LOOCK, J.C. 2003. British Small Arms Ammunition. Chapter 12 (p.279-300) In: BESTER, R. 2003. Small Arms of the Anglo-Boer War 1899-1902. Brandfont: Kraal Publishers.
- LOOCK, J.C. 2005. The geology, palaeontology and geomorphology of portions of Grootfontein, Branddorings and Bushmanskop in the division of Beaufort West. EIA Report Mr Christie Mocke, Paardenfontein, Beaufort West.
- LOOCK, J.C. 2010. The geology of the route from Gansfontein to Leeukloof, Beaufort West District. EIA Report for HJ Surveyors CC, P.O. Box 695, Riebeeck West 7306.
- MITCHELL, P. 2002. The Archaeology of Southern Africa. Cambridge Africa Collection, Cape Town.
- MOIR, R.W. & SAMPSON, C.G. 1993. European and Oriental ceramics from rock shelters in the upper Seacow valley. *Southern African Field Archaeology* 2(1): 35-43.
- MORRIS, D. 1988. Engraved in place and time: a review of variability in the rock art of the Northern Cape and Karoo. *South African Archaeological Bulletin* 43(148):109-121.
- MORRIS, D. 1990a. 'Etchings' and 'Intaglios' in the Upper Karoo: Part 1: The engravings at Springbok Oog. In Beaumont, P.B. & Morris, D. Guide to archaeological sites in the Northern Cape. Kimberley: McGregor Museum.
- MORRIS, D. 1990b. 'Etchings' and 'Intaglios' in the Upper Karoo: Part 2: Engravings on Jagtpan and adjacent farms. In Beaumont, P.B. & Morris, D. Guide to archaeological sites in the Northern Cape. Kimberley: McGregor Museum.
- MORRIS, D. 2011. Paarde Valley Ilanga Lethemba PV Solar Energy Facility. Specialist input for the environmental impact assessment phase and environmental management programme for the proposed Ilanga Lethemba solar energy facility, near De Aar, Northern Cape Province. Unpublished report prepared for Savannah Environmental (Pty) Ltd. Kimberley: McGregor Museum.
- ORTON, J. 2011. Heritage impact assessment for three solar energy facilities at De Aar, Northern Cape. Unpublished report prepared for Aurecon South Africa (Pty) Ltd. St James: ACO Associates cc.
- ORTON, J. 2012. Heritage Impact Assessment for three Solar Energy Facilities at De Aar, Western Cape (sic). ACO Associates cc.
- ORTON, J. & WEBLEY, L. 2013. Heritage Impact Assessment for multiple proposed solar energy facilities on De Aar 180/1 (Badenhorst Dam Farm), De Aar, Northern Cape Province. EIA for Aurecon South Africa.
- PAKENHAM, T. 1997. The Boer War. Johannesburg: Jonathan Ball.
- PARAVICINI DI CAPELLI, W.B.E. 1965. Reize in de Binnen-Landen van Zuid-Afrika. De Kock, W.J. . (Ed.). Cape Town: Van Riebeeck Society. V.R.S. 46.

PEACE, D. 1993. Late Holocene and historical Bushmen stone tool production in the upper Seacow River valley, South Africa. Ph.D. Southern Methodist University, Dallas.

PIETERSE, H.J.C. 1941. Oorlogsavonture van Genl. Wynand Malan. Bloemfontein: Nasionale Pers. 369pp.

PISTORIUS, J.C.C. 1994. Eskom Archaeological Site Identification Guide. Johannesburg: Eskom.

PLUG, I. 1993. The macrofauna remains of wild animals from Abbot's Cave and Lame Sheep Shelter, Seacow valley, Cape. *Koedoe* 36: 15-26.

PLUG, I. BOLLONG, C.A. & SAMPSON, C.G. 1994. Pre-European livestock in the upper Seacow River valley, north eastern Cape Province. *Annals of the South African Museum* 104(3):31-48.

PGS Heritage & Grave Relocation Consultants, 2010. .Perseus Hydra Transmission Line, Archaeological Walk down. Completed for Eskom.

PGS Heritage & Grave Relocation Consultants, 2012. Concentrated Solar Project for Mainstream Renewable Power South Africa, on the farm PaardeVley 145 close to De Aar in the Northern Cape Province. SiVest Environmental Division.

ROODT, A. 1998. Die Kaapse Rebel – Die oorlogsavonture van kommandant Edwin Conroy tydens die Tweede Vryheidsoorlog. JP van der Walt, Pretoria.

RUBIDGE, B.S. (Ed.). 1995. Biostratigraphy of the Beaufort Group (Karoo Supergroup). Biostratigraphic Series No 1. Council for Geoscience. 45p.

SAITOWITZ, S. & SAMPSON, C.G. 1992. Glass trade beads from rock shelters in the upper Seacow River valley. *South African Archaeological Bulletin* 47:94-103.

SAMPSON, C.G. 1974. The Stone Age archaeology of southern Africa. New York: Academic Press.

SAMPSON, C.G. 1984. A prehistoric pastoralist frontier in the Upper Zeekoe Valley, South Africa. In: Hall, M., Avery, G., Avery, D.M., Wilson, M.L. & Humphreys, A.J.B (eds) *Frontiers: southern African archaeology today*: 96 – 110. Oxford: British Archaeological Reports International series 207.

SAMPSON, C.G. 1985. Atlas of the Stone Age settlement in the central and upper Seacow Valley. Bloemfontein: *Memoirs of the National Museum*, No: 20.

SAMPSON, C.G. 1986. Model of a prehistoric herder-hunter contact zone: a first approximation. *South African Archaeological Society Goodwin Series* 5: 50-56.

SAMPSON, C.G. 1993. 'Zeer grote liefhebbers van tobak': nicotine and cannabis dependency of the Seacow River Bushmen. *The Digging Stick* 10:2-6.

SAMPSON, C.G. 1994. Ostrich eggs and Bushmen survival on the north east frontier of the Cape Colony, South Africa. *Journal of Arid Environments* 26:383-399.

SAMPSON, C.G., HART, T.J.G., BLAGG, J.D. & WALLSMITH, D.L. 1989. The ceramic sequence in the upper Seacow valley: problems and implications. *South African Archaeological Bulletin* 44:3-16.

SAMPSON, C.G. & PLUG, I. 1993. Late Holocene and historical bone midden density in rock shelters of the upper Seacow River valley. *Southern African Field Archaeology* 2:59-66.

SAMPSON, C.G. & J.C. VOGEL 1995. Radiocarbon chronology of the Later Stone Age pottery decorations in the upper Seacow River valley. *Southern African field Archaeology* 4(2):84-94.

SAMPSON, C.G. & SADR, K. 1999. On the size and shape of Later Stone Age fibre tempered vessels from the upper Seacow River valley. *Southern African Field Archaeology* 8(1): 3-16.

Sampson, C.G. 2010. Chronology and dynamics of Later Stone Age herders in the Seacow River valley, South Africa. *Journal of Arid Environments* 74:848-848.

SKOTNES, P. 2007. *Claim to the country*. Cape Town: Jacana.

SMIT, A.P. 1963. *Kerkoring teen die Treinspoor, NG Kerk De Aar - 1913-1963*. De Aar.

SMITH, A.B. (Ed.). 1995. *Einiqualand: Studies of the Orange River Frontier*. Cape Town: UCT Press.

SMITH, J.A. 1946. *Ek rebelleer*. Bloemfontein: Nasionale Pers. 179pp.

TREHAVEN, R. 1996. The pretty dabs of Sponge Ware. *Vuka S.A* 1(6):30-34.

VAN HEERDEN, P. 1969. *Kerssnuitsels*. Tafelberg, Kaapstad.

VAN RYNEVELD, K. 2008. *Archaeological Scoping - Establishment of an Ammunition Disposal Plant, Sinclair's Dam 133, De Aar, Northern Cape, South Africa*. Archa.

VOIGT, E.A., INA PLUG & SAMPSON, C.G. 1995. European livestock from rock shelters in the upper Seacow Valley. *Southern African Field Archaeology* 4:37-49.

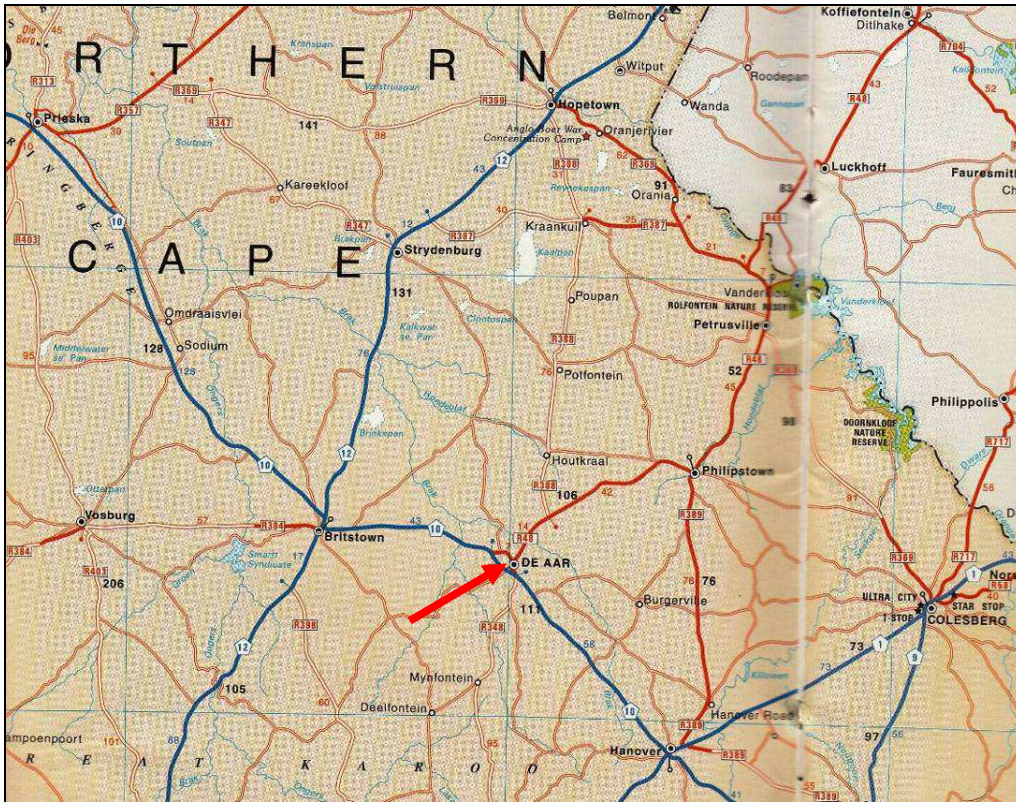
WAR OFFICE. 1915. *Treatise on Ammunition*. London: His Majesty's Stationary Office. 10<sup>th</sup> Edition pp.592.

WATT, S.A. 1987. Deelfontein (A hospital in the Karoo during the Anglo-Boer War, a cemetery today). *Military History Journal* Vol 7 No 4 - December 1987.

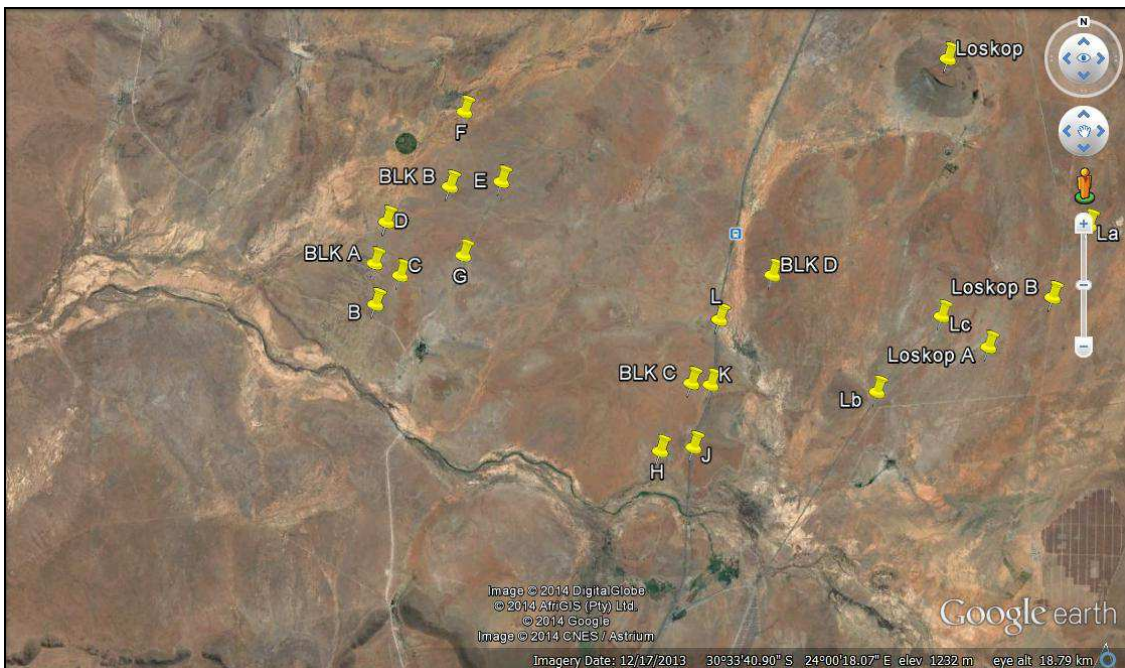
WEBB, R.S. 1958. A Report of the 19<sup>th</sup> August 1845, submitted to the Governor Sir Peregrine Maitland, by Commandant Gideon D. Joubert, of the farm Hebron in the New Hantam, Colesberg, South Africa, concerning the state of affairs among the Native Inhabitants and the Emigrant Farmers living between the Vaal River and the Orange River. Hand written transcription of the original report in the Cape Archives, Cape Town, with a literal translation from the Dutch and personal notes. Paarl.

WESTBURY, W. & SAMPSON, C.G. 1993. To strike the necessary fire: acquisition of guns by the Seacow valley Bushmen. *South African Archaeological Bulletin* 48(157):26-31.

**LIST OF ILLUSTRATIONS:**



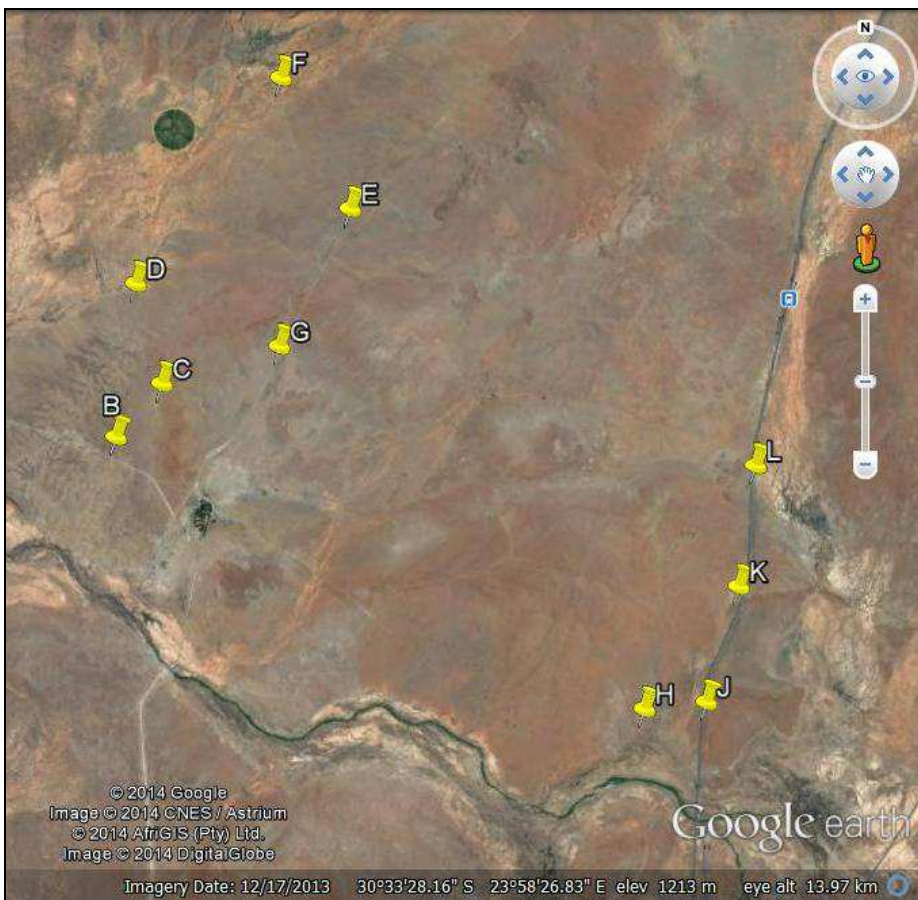
Map 1 Locality of De Aar in relation to other town in the Northern Cape.



Map 2 Locality of other proposed development sites near Blaaukrantz 144 (BLK), De Aar.



Map 3 Locality of Blaaukrantz 144, De Aar.



Map 4 GPS coordinate points at Blaaukrantz 144, De Aar.





Fig.1 Point A Blaaukrantz 144, De Aar.



Fig.2 Point B Blaaukrantz 144, De Aar.



Fig.3 Point C Blaaukrantz 144, De Aar.



Fig.4 Point D Blaaukrantz 144, De Aar. Point Ha at Caaroluspoort 146, De Aar.



Fig.5 Point E Blaaukrantz 144, De Aar.



Fig.6 Point F Blaaukrantz 144, De Aar.



Fig.7 Point G Blaaukrantz 144, De Aar.



Fig.8 Point H Blaaukrantz 144, De Aar.



Fig.9 Point J Blaaukrantz 144, De Aar.



Fig.10 Point K at Blaaukrantz 144, De Aar.



Fig.11 Dolerite outcrop along the railway line at Point K Blaaukrantz 144, De Aar.



Fig.12 Stone wall at Point K Blaaukrantz 144, De Aar.



Fig.13 Circular stone enclosure, possibly a sangar at Point K Blaaukrantz 144, De Aar.



Fig.14 Anglo-Boer War metal food containers at Point K Blaaukrantz 144, De Aar.  
(Pocket knife = 84mm).



Fig.15 Point J Blaaukrantz 144, De Aar.



Fig.16 Collection of stone flakes at Point C, Blaaukrantz 144, De Aar (Pocket knife = 84mm).





Fig.17 Collection of lydianite flakes at Point C, Blaaukrantz 144, De Aar (Pocket knife = 84mm).

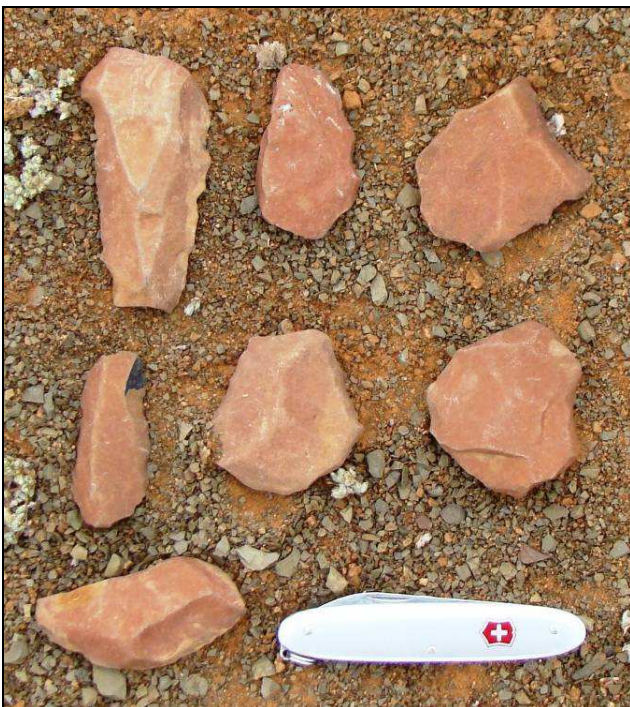


Fig.18 Patinated MSA flakes at Point D, Blaaukrantz 144, De Aar (Pocket knife = 84mm).



Fig.19 Patinated MSA flakes at Point F, Blaaukrantz 144, De Aar (Pocket knife = 84mm).



Fig.20 Stone flakes at Point G, Blaaukrantz 144, De Aar (Pocket knife = 84mm).

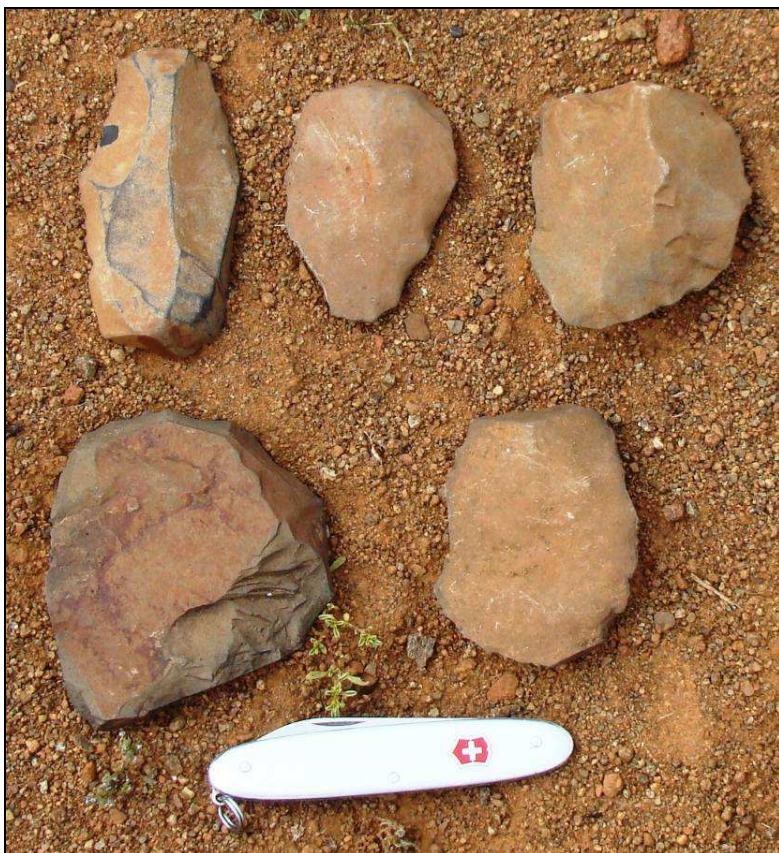


Fig.21 Patinated MSA flakes at Point K, Blaaukrantz 144, De Aar (Pocket knife = 84mm).



Fig.22 Patinated MSA flakes at Point J, Blaaukrantz 144, De Aar (Pocket knife = 84mm).



Fig.23 Sponge ware bowl with lid dating from pre-Anglo-Boer War (J. Dreyer Private Collection).