



COBUS DREYER

Pr. Archaeologist/Heritage Resource Practitioner

**P.O. Box 12910
BRANDHOF 9324
Bloemfontein
dreyerj@telkomsa.net**

**Tel: 051-444 1187
Fax: 051-444 4395
Cell: 083 357 7982**

22 SEPTEMBER 2014

- **FIRST PHASE ARCHAEOLOGICAL & HERITAGE ASSESSMENT OF THE PROPOSED DIAMOND PROSPECTING AT PORTIONS 1, 2 & 4 OF THE FARM DARLESTON 204 AND FARM 243, POSTMASBURG, NORTHERN CAPE**

EXECUTIVE SUMMARY

De Beers Exploration is planning diamond prospecting at the farm Darleston 204, situated about 74km north east of Postmasburg in the Northern Cape Province. The prospecting is planned on 52ha of unspoilt land.

Darleston is located about 82km from the rich Late Stone Age (Acheulian) area at Kathu. The notable archaeological site at Wonderwerk Cave is situated about 35km north west of Darleston farm. Other archaeological sites include Blinkklipkop, Doornfontein, Burchell's Shelter and cave shelters at Dikbosch and Lime Rock to the east and along the Ghaap Escarpment.

The only find at Darleston was a small collection of Middle Stone Age chert flakes and flaked cores along the edge of a depression. The collection is relatively small, but the bright specimens of stone artefacts appear as a thin scatter in the specific area. The single collection is too small for closer investigation.

No other cultural remains were found.

I accept that the prospecting will have no impact on the cultural heritage and historical environment at Darleston. Further planning of the proposed project may continue and no mitigation measures are needed.

INTRODUCTION & DESCRIPTION

Scope and Limitations

De Beers Exploration is planning diamond prospecting at the farm Darleston 204, near Daniëlskuil and Postmasburg. The prospecting will be done on 52ha of unspoilt land. De Beers Exploration commissioned the archaeological and heritage assessment.

The investigation provided the opportunity to examine the site. The red sandy soil surface consists of a continuous grass cover with scatters and clusters of indigenous shrubs. The vegetation did not have any effect on the survey and no limitations occurred during the site visit.

Methodology

1. Standard archaeological survey and recording methods applied.
2. Survey of previous HIA reports.
3. Site inspection on foot and by vehicle.
4. Layout of the area and features plotted by GPS.
5. Surroundings and features recorded on camera.
6. Preparation of maps & literature.
7. Research on the history, archaeology & heritage remains.
8. Prepare map coordinates transferred to Google Earth.

INVESTIGATION

De Beers Exploration is planning diamond prospecting at the farm Darleston 204, north east of Postmasburg, Northern Cape Province. The prospecting will cover 52ha of unspoilt land.

The current heritage investigation provided the opportunity to examine the land proposed for prospecting and mining activities. An official from De Beers Exploration took us to the farm and accompanied us during the site visit on 28 Augustus 2014.

The study aims to locate and evaluate the significance of cultural heritage sites, archaeological material, manmade structures older than 60 years, and sites associated with oral histories and graves that may be affected by the proposed developments. In many cases, planted and self-sown trees and other types of vegetation represent a major part of the historical environment of human settlements in villages and towns, on farmyards or even deserted places in the open veld. These features are considered during any cultural investigation.

The land was examined for possible archaeological and historical material, and an attempt was made to establish the potential impact on any cultural material that might

be found. The Heritage Impact Assessment (HIA) is done in terms of the National Heritage Resources Act (NHRA), (25 of 1999) and under the National Environmental Management Act, 1998 (Act. 108 of 1998).

From previous archaeological investigations at Kathu, researchers are aware that stone hand axes and pointed flakes of exceptional technological skills dating from the later phase of the Early Stone Age occur in the red sand deposits of the area. The distribution of these artefacts could be fairly general and widespread in the surroundings of Kathu (Beaumont 1990, 2007; Dreyer 2006, 2008, 2010) and it might be possible that lithic material could also appear at other sandy areas.

After several seasons of excavations at Kathu Pan and elsewhere near Kathu, Beaumont (1990) established the importance of the Early Stone Age lithic material. Investigations at Kathu cemetery (Beaumont 1990, 2007) and at Hartnolls (Dreyer 2006) and Bestwood 459RD (Dreyer 2008, 2010), produced proof of a wider distribution of these Early Stone Age hand axes and pointed flakes in great numbers. Mechanical test trenches at Bestwood did not deliver any artefacts, but tools were collected in an old sand borrow pit from a layer about 2m below the surface level (Dreyer 2008, 2010).

While exhilarating finds were made in the red sand deposits with significant stands of *Erioloba trees* around Kathu, it appears that the geology has changed rapidly in places where the deep red sand deposits transform into hills, which produce rich iron ore accumulations (Dreyer 2010).

A BRIEF HISTORY OF THE POSTMASBURG DISTRICT

Postmasburg is located 170km east of Upington, 67km north of Griquatown and 58km south west of Daniëlsskuil in the Northern Cape Province. The settlement originated as a station of the London Missionary Society called *Sibiling* and as such became a Griqua village called Blinkklip. Postmasburg was proclaimed a town in 1892 and it achieved municipal status in 1936. The town was named after the Reverend Dirk Postma (1818-1890), a minister of the Dutch Reformed Church. Koopmansfontein is a nearby village on the R31, 61km north west of Barkly West, 115km east of Postmasburg, was named after a Griqua chief called Koopman, who lived at the fountain.

Since the initial geological exploration in the Northern Cape Province in 1867 and the first surveying of the farms Beeshoek, Doornfontein, Driehoekspan and Paling in 1876, it took until 1907 for developers to realise the extensive potential of manganese deposits around Postmasburg and Black Rock. Substantial and rapid developments started from 1928 and 1929, with the Postmasburg railway line to follow in 1930. By 1934 and 1935, new mining companies came into production in 1936, and extending operations to Black Rock in 1940. A need for ore-bearing land came up in the 1950's, leading to prospecting options on N'Chwaning, Belgravia, Santoy and Gloria in the Kalahari. Eskom electricity supply reached Beeshoek and Gloucester in 1962, and modern industrial machinery replacing old mining methods. A new mine opened at

N'Chwaning in 1975. By the 1980s, mechanization had become the norm throughout the mining industry, bringing specialised technology and high capital investment. Loading facilities were upgraded, while mechanical power shovels and bulk tipper trucks were brought in. Scattered quarries were consolidated into open cast pits. Production at Beeshoek mine was discontinued in 1981 following the recession and the political aftermath of the Soweto uprisings. New mines opened on Bruce, King and Mokaning farms.

In 2001, Assmang restructured its operations concentrating N'Chwaning, Gloria and Cato Ridge Works on manganese and iron ore production at Khumani and Beeshoek. December 2005 saw the first phase of a project to establish a new massive export mine. Transnet committed to expand the Sishen Ores export rail line. The second development phase came in, parallel with the first phase in 2007 to increase the export mass to an even more impressive height from 2009.

At present, manganese mining in the Northern Cape bears little resemblance to the small companies that originally started work on the manganese fields in 1935. The operating mines benefit from the modern mining infrastructure and technologies (Samangan 1977).

In reality, there is an ever-increasing impact on the environment as well as on the cultural and historical heritage of the area. This is likewise a challenging situation, where a dynamic balance between development and preservation should be implemented and maintained.

HISTORICAL ENVIRONMENT

Several of the ancient Batswana tribes, including the different Thlaping and Tiharo sections as well as other smaller groups, take their 18th and 19th century roots back to a particular part of the Northern Cape. This region includes the districts around Postmasburg, Olifantshoek, the Langeberg (Majeng) and Korannaberg ranges to the west, including the districts of Pilansberg, Marico, Lichtenburg, Wolmaransstad, Potchefstroom, Rustenburg and Klerksdorp (Van Warmelo 1935, Massie 1905, Breutz 1953-1955, 1957, 1959, 1963).

Since about 1911, European stock farmers gradually ventured into parts of the Northern Cape, where certain areas had previously been inhabited by the Batswana. After Britain annexed Bechuanaland in 1885, the land belonging to the indigenous inhabitants had been consolidated into a number of reserves. In 1895, when British Bechuanaland became incorporated into the Cape Colony, these reserves remained the property of the Batswana people. By proclamation, these reserves could only be alienated by consent of the Secretary of State of the Cape Colonial authority. Tswana resistance to White colonisation led to the Langeberg Rebellion of 1896-97 and permission for alienation followed soon afterwards. Farms in the confiscated reserves were surveyed and made

available to White farmers. Chief Toto for one was upset about the White families who settled in the area on farms such as Skaapkloof, Steenbokkloof and Gasikoa, which the Batswana considered as their best cattle posts at natural water springs. The neglect by Surveyor Theal to demarcate the western border of the Reserve, allowed Toto to claim the land further west stretching up to the Griqualand West border. To resolve this uncertainty, Surveyor J.C. Wessels was sent out to mark the western border of the reserve (Dalgerty 1898).

The territory between the Vaal and the Molopo rivers played an important role in the settlement and lives of the southern Tswana tribes, particularly the Batlharo of Mankurwane and Barolong of Montshiwa. Shortly after 1881 when the Transvaal Republic (ZAR) gained its independence from Britain, full-scale hostilities broke out between the Boers and the Tshidi-Barolong of Montshiwa. Both these parties obtained the assistance of different groups of mercenaries to fight for them. One of these hired adventurers turned out to be the notorious Scotty Smith, renowned cattle and horse thief, diamond smuggler, gunrunner, elephant hunter and hired soldier (Edgecombe 1979).

When facing starvation during the hostilities, Montshiwa had to surrender to the Boers in 1882. The establishment of the Republics of Goosen (1882) and Stellaland (1883) by the European colonists, followed shortly afterwards. At the same time, the Tlhaping of chief Mankurwane aroused hostilities by an attack on a Taaibosch-Korana settlement of David Massouw at Mamusa near Schweizer-Reneke (Van den Berg 1996.). In 1883, a large British force under General Sir Charles Warren was sent to put an end to the Republics of Stellaland and Goosen. An area, which included the two Republics, was annexed to Britain in 1885 as the crown Colony of British Bechuanaland. This had been followed in 1895 by a transfer of the land under the jurisdiction of the Government of the Cape Colony, placing Mankurwane and Montshiwa under direct British rule.

The Batlhaping and Batlharo, southern branches of the Batswana, reached Majeng (Langeberg), Tsantsabane (Postmasburg) and Tlhaka le Tlou (Olifantshoek), with the largest Tlhaping settlement at Nokaneng (Nokanna). The Tlharo occupied the Langeberg, and more specifically between Olifantshoek (Ditlou) and Dibeng. After clashes with the Korana, who came into the area in about 1770, the Tlhaping and Tlharo had to leave Nokaneng and the Langeberg region by 1790. The Tlhaping moved to Dithakong, while the Tlharo settled north and north west of the Tlhaping. At the beginning of the 19th century, the Tlhaping joined Robert Moffat's mission station near Kuruman. The Tlharo settled between Kuruman and the Langeberg, reaching the Kuruman River and the Korannaberg by 1820. The hostile conduct of the Bergenaars (a vagabond group of outcast Griekwa, Korana, Namakwa and other people of mixed descent) left the Langeberg relatively unoccupied during the early decades of the 19th century. From about the 1840s the situation stabilised sufficiently to allow the Tlharo, under chief Makgolokwe to stay in the Langeberg. Their main settlement was on the farms Pudahush and Toto, with outposts at Ditlou, Gamanyana and Gamasep. Other tribe members spread to Gatlhose, Maremane, Dibeng and Kathu. By 1859, the London

Missionary Society was already active amongst the Batlharo and by 1862, a school existed at Pudahush (Maingard 1933, Snyman 1986).

To secure the previously unmarked western border, Griqualand West was annexed by Britain in 1871, placing the boundary line only about 30km south of Olifantshoek. This action resulted in a serious revolt by the Black occupants of Griqualand West in 1878. The unrest also affected British Bechuanaland, with a section of the Langeberg Bathlharo under Sampie, the son of Makgolokwe (and half brother of Toto from the second hut, Breutz 1963), who decided to join the rebels gathered around Ditlou and Pudahush. In 1897, a task force under General Sir Charles Warren marched on the Langeberg, where the rebels had been defeated in a series of skirmishes. To keep an eye on the situation, Warren remained in the area for some time, placing his command centre at Ditlou, with another section of his force at Gamasep. After this, peace had been restored in the whole of Bechuanaland and a general pardon was proclaimed. Throughout these hostilities, Makgolokwe and his son Toto (Totwe) remained quiet and loyal at Dibeng and were allowed to return to Pudahush after the war. By 1881, the total border police force had been withdrawn from Bechuanaland, allowing a state of disorder to develop in the area. Makgolokwe passed away in 1881 and was succeeded by his son Toto (Snyman 1986).

Toto Makgolokwe became the paramount chief of the Batlharo tribe. In 1897, he was the hero of the Langeberg Rebellion after defeating the British military force. The British subsequently brought in reinforcements which defeated the Batlharo and captured both Toto Makgolokwe and Kgosi Galeshewe. Toto was convicted for protecting and sheltering Galeshewe, while Toto's eldest son Phemelo Toto was also arrested and taken with him to Robben Island where Toto eventually died.

Kgosi Galeshewe became chief of the Tlhaping tribe in South Africa. Following an attack on Cornforth Hill near Taung in 1878, a raid in which Francis Thompson and his nephew were savagely murdered, Galeshewe was captured and subsequently sentenced to twelve years imprisonment for his part in the uprising. In 1897, during a rinderpest outbreak, he again clashed with the police and military forces at Phokwane near Hartswater. As a result, he was imprisoned for his part in the Langeberg Rebellion. He died at Magogong, near Hartswater in 1927. The Kimberley township of Galeshewe is named after him.

Shortly after annexation by the Cape Colony, rebellion erupted in the former Crown Colony of British Bechuanaland. Joining forces in the Langeberg Mountains, the Tlhaping and Tlharo clans resisted a large government force for nearly eight months. The origins of the rebellion derive from the long-standing grievances of the Tlhaping and Tlharo, mainly out of competition for land. Frustration caused by the white administration, meant taxes, police interference and new laws, for the chiefs, the responsibility of a new legal system together with the arrival of Christianity and a decrease of authority of the chiefs. On the other hand, there had been the white man's own mounting frustration. The annexation of the territory by the Cape Colonial Government seems to have stimulated a demand for more available land. Amongst the

Tlhaping and Tlharo, new grievances and pressures became acute shortly before the rebellion. These included a serious distrust of the Cape Colonial government, further fears of loss of land and concern about threats to their growing involvement in a market economy. Finally, the consequences of a rinderpest epidemic coupled with dynastic politics appear to have tipped the scales in favour of rebellion (Saker & Aldridge 1971).

From 1882 a noticeable shift of Batlharo tribe members to the Langeberg, caused a rapid increase in the followers of Tlharo. This movement followed struggles between the Tlharo and the Tlhaping, Korana, Rolong and their White allied freebooters. By 1884, the Tlharo tribe was still prepared to acknowledge British rule over their territory, but after several raids by Mankurwane and his Tlhaping, the Batlharo of Toto were preparing for self-defence.

The report of the Land Commission of 1886 added the Langeberg, Deben, Kathu, Gatlhose and Maremane region to the territory of the Batlharo. These land grants did not bring any notable change to the security situation for Toto's territory remained a haven for stock thieves. During 1889 to 1890, the land surveyor M.W. Theal was assigned to measure and layout the farms in the area around Toto's reserve. After the annexation of Bechuanaland, the first group of traders moved into the area to settle at Bishops Wood (1886), Mapedi (Lynputs) from 1888, Gamagara (1889), Magoloring (Aarkop) and Mount Temple in 1888.

In the former Langeberg Reserve, a need arose from 1910 onwards for a centre to serve the growing farming community. This led to the laying out of residential lots at Olifantshoek in 1911 and resulted in the establishment of a village management board in 1917 (Snyman 1987).

It is accepted that the farms such as Inglesby, Lukin, Gamanyana, Pudahush, Toto, Luka and Hopkins, had been named after major role players in the Langberg Rebellion. The present study which is aimed to understand the historical background and heritage resources of the area, did not produce any proof or references confirming these farms as the original and actual living sites of the different Batswana tribes (Dreyer 2014).

The inspection did likewise not produce any archaeological or historical remains of earlier tribal occupations at the farm Darlestone 204 either.

ARCHAEOLOGICAL BACKGROUND

A number of heritage investigations reported Stone Age material from the Postmasburg area (Groenewald 2013). Pelsler & Lombard (2013) mentions graves and lithic material at a site 15km north of Postmasburg and close to the Beeshoek mine on rocky ridges and on the flood plain along the river. Rock engravings are also mentioned from both Beeshoek Mine and Paling farm (Van Riet Lowe 1956). The Paling site is probably associated with a cave shown on a map dating from 1881.

Beaumont and Boshier (1974) describe ancient specularite mines around Postmasburg and Beeshoek and refer particularly to finds at Doornfontein, 16km north west of Postmasburg. The farm Paling is also mentioned to have Stone Age material from all phases, mentioning artefacts such as core flakes, blades, segments and scrapers made out of Silcrete, jasper, quartzite, horn fells and banded iron stone (Thackeray et al. 1983).

LATER IRON AGE

Dramatic climate changes resulted in a rapid population growth along the east coast of South Africa. Increased pressure on the natural resources and attempts to control trade routes during the early 19th century brought the emergence of powerful leaders in the coastal area. Subsequent power struggles developed into a period of instability on the central Highveld. This time of strife or wars of devastation, known as “difaqane” (Sotho/Tswana) or “Mfecane” (Nguni), affected many of the Black tribes in the interior. Attacks from east of the escarpment initiated by the AmaZulu impis of Chaka in about 1822, were sustained by the AmaNdebele of Mzilikazi and the AmaNgwane of Matiwane into the Free State, North West Province and Northern Cape, thus uprooting among others, the Batlokwa of Sekonyela and Mantatise and various smaller Sotho/Tswana tribes further inland. On their turn, the Batlokwa drove off the Bafokeng of Sebetoane from Kurutlele near Senekal in the Free State, who, in their effort to escape the pursuit by the AmaNdebele forces, eventually landed up in the Caprivi (Dreyer & Kilby 2003). This period of unrest directly affected the peoples of the interior, resulting in the displacement of scores of tribesmen, women and children. The stronger tribal groups, such as the AmaNdebele of Mzilikazi, assimilated many of these Batswana refugees.

The Later Iron Age phase brought people who cultivated crops, kept livestock, produced an abundance of pottery in a variety of shapes and sizes and smelted metals. Extensive stone-walled enclosures characterise their permanent settlements. These living places are known from the prominent Sotho/Tswana settlements along the Renoster and Vals Rivers near Kroonstad and Bothaville, at Klerksdorp, Rustenburg and in the Magaliesberg.

A number of Taaibos Korana and Griqua groups, remnants of the Later Stone Age peoples, managed to survive the assimilation by Sotho/Tswana tribes at Mamusa near Schweizer Reneke (Van den Berg 1996).

Early European missionaries and travellers ventured into the central parts of the country during the 19th century and the Rev James Archbell established the missionary at Thaba Nchu by 1834. These marauding hordes affected the lives of the Batswana people living at Dithakong near the mission station of Robert and Mary Moffat near Kuruman.

The Iron Age archaeology of the Free State, Northern Cape and North West Province is characterised by a wide distribution of stone walled sites on the flat-topped ridges and hills. There is detail and consistency in the arrangement and design of these structures. People's expression of culture has left its imprint on the material environment. The settlement patterns display human perceptions with regard to social clustering, economic system and political organisation. Patterns culminate in the arrangement of huts, byres and middens in a particular order and in relation to one another. Spatial organisation in general is characterised by the central position of stock enclosures and the placing of the main dwelling area on the perimeter of the settlement. Although a variety of different classes and types of settlements have been defined, these are all variations of the Central Cattle Pattern (CCP), a specific model for the organisation and use of space in Zulu and Sotho/Tswana settlements.

The classification of sites is based on the assumption that settlement layout is bound and prescribed by cultural perceptions. The identification of different ethnic groups is thus possible from the way in which these traditional peoples organised their different living places in terms of space and time. The result was directed by cultural preference (choice) and function. The significance of livestock, personal status, kinship, social organisation and the diverse roles of men, women and offspring have always been important in the understanding of settlement patterns.

The Later Iron Age classification of settlement patterns formulated by Maggs (1976) and Mason (1986), produced a standardised archaeological framework for the ordering of structures and sites characterised respectively by stock enclosures with connecting walls, in certain cases including corbelled huts (Type V), surrounding walls (Type N) and huts with bilobial courtyards (Type Z). Associated pottery assemblages with different decoration styles confirm the classification of sites based on layout (Maggs 1976:290). Different settlement patterns also produced huts of different materials in different styles (Dreyer 1996).

Type Z sites are normally associated with Batswana settlement and the settlement pattern show up as a ring of scalloped stone walls surrounding several stock enclosures. From this, it is concluded that these dwellings consisted of a cone on cylinder hut with stone walled courtyards at both front and rear, forming a bilobial layout. The huts are arranged around a cluster of central cattle byres. Raw materials have been substituted at different localities, resulting in a variation in settlement pattern where clay walls replaced stone-walling of the front lobe as at Bothaville (Maggs 1976) and at the Willem Pretorius Game Reserve on the Sand River, near Ventersburg (Dreyer 1997). The occupation of the sites with bilobial dwellings is ascribed to Batswana (e.g. Thlaping and Rolong) groups. It is also possible to link Kubung people to every known site of this kind (Maggs 1976).

Pottery decorations associated with Type Z settlements are characterised by shallow line incisions in bands and triangles below the rim and on the shoulder, combined with straight or curved lines and areas of red ochre burnish on the body of clay vessels (Maggs 1976).

According to radiocarbon dating and oral tradition, Type Z sites were occupied from the 16th and 17th to early 19th century at Ventersburg, and 18th to early 19th century at Bothaville. A single bone sample from Jansfontein in the Doringberg, near Ventersburg, produced a calibrated date of 1670, which is slightly later than the Ventersburg date (Dreyer 1992). Taylor's Group II sites produced a date between AD 1650 and 1800 with the settlements at Askoppies around late 1670s, early 1680s and early 1800 (Pelser 2005).

LOCALITY

The farm Darleston 204 is situated 28km north west of Koopmansfontein at a turn-of from the R31 from Barkly West to Postmasburg (Map 1). The site is located 23km north east of Daniëlskuil and 74km from Postmasburg in the Northern Cape (Maps 2&3).

The Kalahari Thorn Veld vegetation covers the characteristic deep red sandy soil deposit. Vegetation consists mainly of Swarthaak (*Acacia mellifera*), Driedoring (*Rhigozum trichotomum*), Kameeldoring (*Acacia erioloba*), Vaalbos (*Tachonanthus camphorathus*), Witgat (Shepherd's Tree = *Boscia albitrunca*) and Haak-en-Steek (Umbrella Thorn = *Acacia tortilis*), to name a few.

The following GPS coordinates (Cape scale) were taken (Maps 4&5).

O2a	28°05'27"S. 023°47'21"E Altitude 1465m (Fig.1).
O3	28°05'46"S. 023°47'30"E Altitude 1464m (Figs.2&3).
O4	28°05'42"S. 023°47'00"E Altitude 1470m (Figs.4-6).
O5	28°05'23"S. 023°47'13"E Altitude 1463m (Figs.7&8).

RESULTS

FINDS

The only finds at Darleston 204 was a small collection of Middle Stone Age chert flakes and flaked cores (Fig.10) along the edge of a depression. The collection is relatively small, but the bright specimens of stone artefacts appear as a thin scatter in the specific area. The single collection is too small for closer investigation.

Although the farm Darleston 204 is located in this cultural rich area, no other historical or cultural finds were discovered.

No graves or graveyards or any other cultural material were found at the farm.

IMPACT ASSESSMENT

A small collection of Middle Stone Age chert flakes and flaked cores along the edge of a depression seems to be a general occurrence. Taking into consideration that the prospecting will have a relatively small impact on a part of the area, the cultural material could be evaluated as insignificant.

There will be no major impact caused by the prospecting developments on any heritage resources.

RECOMMENDATIONS

I consider the impact resulting from the new prospecting developments on the archaeological and heritage resources to be of minor significance.

There are no obvious reasons to delay further planning of the developments at the specific site.

I recommend that the planning of the proposed prospecting developments may proceed.

MITIGATION

No mitigation measures will be required in case of the present developments.

ACKNOWLEDGEMENTS

I thank officials from De Beers Exploration for taking us to the site.

I also owe gratitude to Mohlalefe Seleke for assistance and encouragement to complete the research and to prepare the paper.

SELECT BIBLIOGRAPHY:

BEET, G. n.d. The Grand old days of the Diamond Fields. Cape Town: Maskew Miller.

BEAUMONT, P.B. & VOGEL, J.C. 1989. Patterns in the age and context of rock art in the Northern Cape. *South African Archaeological Bulletin* 44(150):73-81.

BEAUMONT, P.B. 1990. Kathu Pan. pp. 75-100 In: Beaumont, P.B. & Morris, D. Guide to archaeological sites in the Northern Cape. Kimberley: McGregor Museum.

BEAUMONT, P.B., SMITH, A.B. & VOGEL, J.C. 1995. Before the Einiqua: the archaeology of the frontier zone. In Smith, A.B. (Ed.). *Einiqualand: Studies of the Orange River Frontier*. Cape Town: University of Cape Town Press.

BEAUMONT, P.B. 2007. Supplementary archaeological impact assessment report on sites near or on the farm Hartnolls 458, Kgalagadi District Municipality, Northern Cape Province. Kimberley: McGregor Museum, Archaeology Department, Report 17 January 2007.

BEAUMONT, P. & BOSHIER, A.K. 1974. Report on test excavations in a prehistoric pigment mine near Postmasburg, Northern Cape. *S. Afr. archaeol. Bull.* 29 (113-114):41-59.

BEAUMONT, P. & MORRIS, D. 1990. Guide to Archaeological sites in the Northern Cape. Southern African Association of Archaeologists Post-Conference Excursion, September 1990. McGregor Museum, Kimberley.

BREUTZ, P.-L. 1953. The Tribes of Rustenburg and Pilansberg Districts. Pretoria. Department of Native Affairs. *Ethnological Publications* No.28.

BREUTZ, P.L. 1954. The Tribes of the Marico District. Pretoria. Department of Native Affairs. *Ethnological Publications* No.30.

BREUTZ, P.-L. 1955. The Tribes of Mafeking District. Pretoria. Department of Native Affairs. *Ethnological Publications* No.32.

BREUTZ, P.-L. 1957. Die Stamme van die Distrikte Lichtenburg en Dalareyville. Pretoria. Departement van Naturelle Sake. *Etnologiese Reeks* Nr.37.

BREUTZ, P.L. 1959. The Tribes of Vryburg District. Pretoria. Department of Native Affairs. *Ethnological Publications* No.46.

BREUTZ, P.-L. 1963. The Tribes of the Districts of Kuruman and Postmasburg. Pretoria. Department of Native Affairs. *Ethnological Publications* No.49.

- DALGERTY, E.H., 1898: Bechuanaland Rebellion 1897. . W.A. Richards & Sons, Cape Town.
- DEACON, J. 1992. Archaeology for Planners, Developers and Local Authorities. Cape Town: National Monuments Council.
- DE JONG, R.C. 2008. Heritage scoping report: proposed residential development and associated infrastructure on a 200ha Portion of the farm Bestwood 429 RD at Kathu, Northern Cape Province. Report for Rock-Rowan Environmental Consulting, Pretoria.
- DREYER, J.J.B. 1992. The Iron Age Archaeology of Doornpoort, Winburg, Orange Free State. *Navorsing van die Nasionale Museum, Bloemfontein*, Vol.8(7):262-390.
- DREYER, J. 1996. Introduction to Free State Iron Age Archaeology. In: Guide to archaeological sites in the Free State and Lesotho. Southern African Association of Archaeologists (SA3), 14th Biennial Conference, Bloemfontein, Post-conference tour 5-8 July 1996. Bloemfontein: National Museum.
- DREYER, J. & KILBY, S. E. 2003. Sebetoane's long march: a history of the Makololo (1823-1851). *Anthropology Southern Africa* 26(1&2):1-15 (formerly South African Journal of Ethnology).
- DREYER, J. 2005. Archaeological and historical investigation of the proposed diamond mining activities at the farms Last Hope 350 & Longlands 369, Barkly West, Northern Cape. EIA Report for Enviroworks Environmental Consultants, Bloemfontein.
- DREYER, J. 2005. Archaeological and historical investigation of the proposed new pipeline to existing sewer plant at Bodulong-Bankhara, Kuruman, Northern Cape. EIA Report for Cebo Environmental Consultants, Bloemfontein.
- DREYER, J. 2005. Archaeological and historical investigation of the proposed new sport stadium at Geelboom, Kuruman district, Northern Cape. EIA Report for Cebo Environmental Consultants, Bloemfontein.
- DREYER, J. 2005. Archaeological and historical investigation of the proposed new road from Vergenoeg to Maruping (Moropeng), Kuruman district, Northern Cape. EIA Report for Cebo Environmental Consultants, Bloemfontein.
- DREYER, J. 2005. Archaeological and historical investigation of the site for the proposed new Maruping sport stadium, Kuruman district, Northern Cape. EIA Report for Cebo Environmental Consultants, Bloemfontein.
- DREYER, J. 2005. First phase archaeological and cultural heritage assessment of the proposed residential developments on Erven 687 & 711 Barkly West, Northern Cape. EIS Report for MDA Environmental Consultants, Bloemfontein.

DREYER, J. 2005. Archaeological and historical investigation of the proposed diamond mining activities at the farm Longlands 369, Barkly West, Northern Cape. EIA Report for Enviroworks Environmental Consultants, Bloemfontein.

DREYER, J. 2005. Archaeological and historical investigation of the proposed diamond mining activities at the farms Melkvley 221 & Longlands 231, Barkly West, Northern Cape. EIA Report for Enviroworks Environmental Consultants, Bloemfontein.

DREYER, J. 2005. Archaeological and historical investigation of the proposed diamond mining activities at the farm Riverside 208, Barkly West, Northern Cape. EIA Report for Enviroworks Environmental Consultants, Bloemfontein.

DREYER, J. 2006. Archaeological and historical investigation of the proposed diamond mining activities at the farm Holpan 161, Barkly West, Northern Cape. EIA Report for the farm owner, Mr Willem van Zyl, Barkly West.

DREYER, J. 2006. First phase archaeological and cultural heritage assessment of the proposed residential developments at the farm Hartsnoll 458, Kathu, Northern Cape. Report for MDA Environmental Consultants, Bloemfontein.

DREYER, J. 2006. First phase archaeological and cultural heritage investigation of the proposed tourist facilities and 4x4 Route at Bothitong / Keangkop, Kuruman, Northern Cape Province. Report for MDA Environmental Consultants, Bloemfontein.

DREYER, J. 2007. Archaeological and historical investigation of the proposed mining activities at the farm Rosslyn, Lime Acres, Northern Cape. EIA Report for PPC Lime Acres.

DREYER, J. 2007. First phase archaeological and cultural heritage assessment of the proposed Garona – Mercury transmission power line, Northern Cape, North-West Province & Free State. EIA Report for MDA Environmental Consultants, Bloemfontein.

DREYER, J. 2008. First phase archaeological and cultural heritage assessment of the proposed residential developments at a portion of the Remainder of the farm Bestwood 459RD, Kathu, Northern Cape. EIA Report for Cultmatrix cc Heritage Consultants, Pretoria.

DREYER, J. 2008. First phase archaeological and cultural heritage assessment of the proposed sewage pipeline installation at Kathu, Northern Cape. EIA Report for MDA Environmental Consultants, Bloemfontein.

DREYER, J. 2008. First phase archaeological and cultural heritage assessment of the proposed Bourke project, ballast site and crushing plant at Bruce Mine, Dingleton, near Kathu, Northern Cape. EIA Report for Milnex-SA Environmental Consultants, Schweizer-Reneke.

DREYER, J. 2009. First phase archaeological and cultural heritage assessment of the proposed upgrading of the waste water treatment works at Kathu, Northern Cape. EIA Report for Envioworks Environmental Consultants, Bloemfontein.

DREYER, J. 2009. First phase archaeological and cultural heritage assessment of the proposed upgrading of the waste water treatment works at Dibeng, Northern Cape. EIA Report for MDA Environmental Consultants, Bloemfontein.

DREYER, J. 2009. First phase archaeological and cultural heritage assessment of the proposed deviation of the 132Kv sub-transmission line at PPC Lime, Lime Acres, Northern Cape Province. EIA Report for Eskom, Bloemfontein.

DREYER, J. 2009. First phase archaeological and cultural heritage assessment of the proposed diamond prospecting at Gong-Gong 371, Barkly West, Northern Cape. EIA Report for Geo-Rock, Environmental Consultants, Kimberley.

DREYER, J. 2009. First phase archaeological and cultural heritage assessment of the proposed upgrading of the Waste Water Treatment Works at Olifantshoek, Northern Cape. EIA Report for MDA Environmental Consultants, Bloemfontein.

DREYER, J. 2009. First phase archaeological and cultural heritage assessment of the mining developments at the farm Doornfontein 446, Postmasburg, Northern Cape Province. EIA Report for Geo-Rock International Consultants, Kimberley.

DREYER, J. 2010. First phase archaeological and cultural heritage assessment of the proposed sand borrow pit & solar farm at a Portion of the farm Bestwood 459RD, Kathu, Northern Cape. Report for Culmatrix Environmental Consultants, Schweizer Reneke.

DREYER, J. 2010. First phase archaeological & cultural heritage assessment of the proposed iron ore mining developments on Portion 2 of the farm Demaneng 546, Kuruman, Northern Cape. EIA Report for Karien van der Merwe, Kimberley.

DREYER, J. 2010. First phase archaeological and heritage assessment of the proposed water flow measuring weir site in the Orange River at Blouputs, Northern Cape. EIA Report for Envioworks Environmental Consultants, Bloemfontein.

DREYER, J. 2011. First phase archaeological and cultural heritage assessment of the mine prospecting area at La Tour 110 & Margaux 108, Griquatown, Northern Cape Province. EIA Report for Geo-Rock International Consultants, Kimberley.

DREYER, J. 2012. First phase archaeological and heritage assessment of the borrow pit developments near Griekwastad, Northern Cape. EIA Report for MDA Environmental Consultants, Bloemfontein.

DREYER, J. 2012. First phase archaeological and heritage assessment of the borrow pit developments near Campbell, Northern Cape. EIA Report for MDA Environmental Consultants, Bloemfontein.

DREYER, J. 2012. Archaeological and historical investigation of the proposed diamond mining activities at Portion 5 (Snyders Rush) of the farm Slang Heuvel 160, Barkly West district, Northern Cape. EIA Report for Rock Runner Environmental Consultants, Kimberley.

DREYER, J. 2013. First phase archaeological & heritage assessment of the proposed new subdivision & township establishment at farm 736RD, Kathu, Northern Cape. EIA Report for Ecocare Environmental Consultants, Bloemfontein.

DREYER, J. 2013. First phase archaeological & heritage assessment of the Vaal-Gamagara water pipeline project, Northern Cape. Revisit to the Kathu Pan archaeological site. EIA Report for MDA Environmental Consultants, Bloemfontein.

DREYER, J. 2013. First phase archaeological & heritage assessment of the proposed Garona – Ferrum transmission line, Northern Cape. EIA Report for MDA Environmental Consultants, Bloemfontein.

DREYER, J. 2014. First phase archaeological & heritage assessment of the proposed Vaal-Gamagara water pipeline project, Northern Cape. Hotazel alternative water pipeline. EIA Report for MDA Environmental Consultants, Bloemfontein.

DREYER, J. 2014. First phase archaeological & heritage investigation of the proposed mine prospecting at the remaining extent of the farm Inglesby 580 near Olifantshoek, Northern Cape Province. EIA Report for Re A Kgon Environmental Consultants, Kimberley.

EDGECOMBE, R. 1979. Sir Alfred Milner and the Bechuana (Langeberg) Rebellion: A case study in Imperial-Colonial relations, 1897-1898. *South African Historical Journal* Vol 11(1): 56-73.

HUMPHREYS, A.J.B. & THACKERAY, A.I. 1983. Ghaap and Gariiep: Later Stone Age studies in the Northern Cape. *South African Archaeological Society Monograph Series* 2. Cape Town.

HUMPHREYS, A.J.B. 1986. *Searching for the past*. Cape Town: David Philip.

LEGASSICK, M.C. 1969. *The Griqua, the Sotho-Tswana and the Missionaries, 1780-1840: The Politics of a frontier zone*. PhD. University of California, Los Angeles.

LICHTENSTEIN, H., 1815: *Travels in Southern Africa*. British and Foreign Public Library, London.

LYE, W.F., 1975: Andrew Smith's Journal of his expedition into the interior of South Africa 1834-36. A.A. Balkema, Cape Town.

MAINGARD, L.F. 1933. The Brikwa and the ethnic origins of the Bathlaping. South African Journal of Science VI 30:597-602.

MASON, R.J. 1986. Origins of the black people of Johannesburg and the Southern western Central Transvaal AD 350-1880. Occasional Paper 16. Johannesburg: University of the Witwatersrand Archaeological Research unit.

MASSIE, R.H. 1905. The Native Tribes of the Transvaal. Prepared by the General Staff, War Office. Printed for His Majesty's Stationary Office by Harrison & Sons, St. Martin's Lane.

MATAKOMA HERITAGE CONSULTANTS. 2006. Kalahari Manganese Mines, Heritage Assessment, on Umtu 281, Olive Pan 282, Gama 283

MORRIS, D. 1988. Engraved in place and time: a review of variability in the rock art of the Northern Cape and Karoo. South African Archaeological Bulletin 43:109-121.

MORRIS, D. 2002. Driekopseiland and 'the rain's magic power': history and landscape in a new interpretation of a Northern Cape rock engraving site. Unpublished Masters Dissertation, University of the Western Cape, Cape Town.

MORRIS, D. 2003. Rock art as source and resource: research and responsibility towards education, heritage and tourism. South African Historical Journal 49:193-206.

MORRIS, D. 2008. Archaeological and Heritage Phase 1, Impact Assessment for proposed upgrading of Sishen Mine Diesel Depot Storage Capacity at Kathu, Northern Cape. Kimberley: McGregor Museum.

ORPEN, J.M. 1964. Reminiscences of life in South Africa, From 1846 to the present day, with historical researches. C. Struik, Cape Town.

PARSONS, I. 2003. Lithic expressions of Later Stone Age life ways in the Northern Cape. South African Archaeological Bulletin 58:33-37.

PELSER, A.J. & Lombard, M. 2013. A report on the archaeological investigation of Stone Age finds on the Paling 434, Hay Magisterial District, near Postmasburg in the Northern Cape Province. EIA Report for Kia Batla Holdings, Craighall.

PGS HERITAGE. (2009). Heritage Impact Assessment for Ntsimbintle Mining (Pty) Ltd on Portions 1, 2, 3 and 8 of the farm Mamatwan 331 and the farm Moab 700 in the Kgalagadi District Municipality of the Northern Cape Province. Pretoria.

PGS HERITAGE. (2010). Heritage Impact Assessment for the Amari Kongoni Manganese Mine on Portion 1 and a section of the Remainder of the farm Kongoni 311 in the Kgalagadi District Municipality of the Northern Cape Province. Pretoria.

PGS HERITAGE. (2010). Heritage Impact Assessment for the Proposed Lehating Mining (Pty) Ltd underground manganese mine on Portions of the Farm Lehating 714, approximately 20km northwest of Hotazel, Northern Cape Province. Pretoria.

PISTORIUS, J.C.C. 1994. Eskom Archaeological Site Identification Guide. Johannesburg: Eskom.

SAKER, H. & J. ALDRIDGE, 1971. The Origins of the Langeberg Rebellion. The Journal of African History 12(2):299-317. Cambridge University Press

SAMANGAN, 1977: Kalahari Wealth: The story of manganese. Purnell & Sons Pty.Ltd., Cape Town.

THACKERAY, A.I., THACKERAY, J.F. & BEAUMONT, P.B. 1983. Excavations at the Blinkklipkop specularite mine near Postmasburg, northern Cape. South African Archaeological Bulletin 38:17-25.

TLOU, T. & A. CAMPBELL, 1997: History of Botswana. Macmillan, Gaborone.

TRANSVAAL NATIVE AFFAIRS DEPARTMENT, 1905. Short History of the Native Tribes of the Transvaal. Pretoria: Government Printer & Stationary Office. Pretoria: State Library Reprint No. 24, 1968.

TRUTER, F.C., WASSERSTEIN, B., BOTHA, P.R., VISSER, D.J.L., BOARDMAN, L.G. & PAVAR, B.A. 1938. The Geology and mineral deposits of the Oliphants Hoek area Cape Province. Geological Survey. Department of Mines. S.A. Government Printer, Pretoria.

VAN DEN BERG, G. 1996. 24 Battles and battle fields of the North-West Province. North West Tourism Association. Potchefstroom.

VAN DER MERWE, P.J., 1949: Pioniers van die Dorsland, Nasionale Pers, Kaapstad.

VAN RIET LOWE, C. 1956. Die verspreiding van Voorhistoriese Rotsgravures en – Skilderye in Suid-Afrika. Argeologiese Opname, Departement van Onderwys, Kuns en Wetenskap. Pretoria. Argeologiese Reeks No.VII.

VAN WARMELO, N.J. 1935. A Preliminary Survey of the Bantu Tribes of South Africa. Department of Native Affairs, Ethnological Publications Vol. V. Pretoria: Government Printer.

WAR OFFICE, 1905. The Native Tribes of the Transvaal. Prepared for the General Staff, War Office. Printed for His Majesty's Stationary Office by Harrison & Sons, St. Martin's Lane.

WESSELS, E. 2002. Veldslae – Anglo-Boereoorlog 1899-1902. LAPA Uitgewers, Pretoria.

HUMPHREYS, A.J.B. 1986. Searching for the past. Cape Town: David Philip.

HUMPHREYS, A.J.B. 1988. A prehistoric frontier in the northern Cape and western Orange Free State: archaeological evidence in interaction and ideological change, *Kronos* 13:3-13. Published by the University of Western Cape, Cape Town.

MORRIS, D. 1988. Engraved in place and time: a review of variability in the rock art of the Northern Cape and Karoo. *South African Archaeological Bulletin* 43(148):109-121.

MORRIS, D. 1990a. 'Etchings' and 'Intaglios' in the Upper Karoo: Part 1: The engravings at Springbok Oog. In Beaumont, P.B. & Morris, D. Guide to archaeological sites in the Northern Cape. Kimberley: McGregor Museum.

MORRIS, D. 1990b. 'Etchings' and 'Intaglios' in the Upper Karoo: Part 2: Engravings on Jagtpan and adjacent farms. In Beaumont, P.B. & Morris, D. Guide to archaeological sites in the Northern Cape. Kimberley: McGregor Museum.

ORTON, J. 2014. Scoping heritage impact assessment for proposed prospecting on farms 53, 56, 566 and 567, Hay Magisterial District, Northern Cape. ASHA Consulting (Pty) Ltd, Rosenthal Environmental, Rondebosch.

PELSER, A.J. A report on archaeological impact assessments (AIA's) for proposed housing developments on erven 83 and 2467, Kuruman, in the Northern Cape. EIA Report for Khumani Housing Development Company, Kathu.

PISTORIUS, J.C.C. 1994. Eskom Archaeological Site Identification Guide. Johannesburg: Eskom.

ROSENTHAL, E. n.d. River of Diamonds. Cape Town: Howard Timmins.

SMITH, A.B. (Ed.). 1995. Einiqualand: Studies of the Orange River Frontier. Cape Town: University of Cape Town Press.

SOHNGE, P.G. VISSER, D.J.L. & VAN RIET LOWE, C. 1937. The geology and archaeology of the Vaal River Basin. Pretoria: Government Printer.

- BEAUMONT, P. & BOSHIER, A.K. 1974. Report on test excavations in a prehistoric pigment mine near Postmasburg, Northern Cape. *S. Afr. archaeol. Bull.* 29 (113-114):41-59.
- BEAUMONT, P. & MORRIS, D. 1990. Guide to Archaeological sites in the Northern Cape. Southern African Association of Archaeologists Post-Conference Excursion, September 1990. McGregor Museum, Kimberley.
- BREUTZ, P.L. 1953. The Tribes of the Rustenburg and Pilansberg districts. Department of Native Affairs, Ethnological Publications No.28. Pretoria: Government Printer.
- BREUTZ, P.L. 1954. The Tribes of Marico District. Department of Native Affairs, Ethnological Publications No.30. Pretoria: Government Printer.
- BREUTZ, P.L. 1963. The Tribes of the districts of Kuruman and Postmasburg. Department of Native Affairs, Ethnological Publications No.49. Pretoria: Government Printer.
- BURCHELL, W. 1967 [1822-24]. Travels in the interior of southern Africa. Vol 2. Cape Town: Struik.
- DEACON, J. 1992. Archaeology for Planners, Developers and Local Authorities. Cape Town: National Monuments Council.
- DALGERTY, E.H., 1898: Bechuanaland Rebellion 1897. W.A. Richards & Sons, Cape Town.
- DREYER, J.J.B. 1992. The Iron Age Archaeology of Doornpoort, Winburg, Orange Free State. *Navorsing van die Nasionale Museum, Bloemfontein*, Vol.8(7):262-390.
- DREYER, J. 1997. A tuyère fragment from Maphororong (Doringberg) near Ventersburg, Free State. Grahamstown: Albany Museum. *Southern African Field Archaeology* 6(2):88-92.
- DREYER, J. & KILBY, S. E. 2003. Sebetoane's long march: a history of the Makololo (1823-1851). *Anthropology Southern Africa* 26(1&2):1-15 (formerly *South African Journal of Ethnology*).
- EDGECOMBE, R. 1979. Sir Alfred Milner and the Bechuana (Langeberg) Rebellion: A case study in Imperial-Colonial relations, 1897-1898. *South African Historical Journal* Vol 11(1): 56-73.
- HUFFMAN, T. 2007. Handbook to the Iron Age: The Archaeology of Pre-Colonial Farming Societies in Southern Africa. Pietermaritzburg: Kwa-Zulu Natal Press.

GROENEWALD, G, 2013. Palaeontological Desktop Assessment of the Farm Wessels 227 and Portions 1 & 2 and the Remaining Extent of the Farm Dibiaghomo 226, near Hotazel Town in The John Toalo Gaetsewe District Municipality in the Northern Cape Province

GROENEWALD, G. 2013. Palaeontological Desktop Assessment of the Farm Gloria 266, near Hotazel Town in the John Toalo Gaetsewe District Municipality in the Northern Cape Province.

HUMPHREYS, A.J.B. & THACKERAY, A.I. 1983. Ghaap and Gariiep: Later Stone Age studies in the Northern Cape. South African Archaeological Society Monograph Series 2. Cape Town.

HUMPHREYS, A.J.B. 1986. Searching for the past. Cape Town: David Philip.

LEGASSICK, M.C. 1969. The Griqua, the Sotho-Tswana and the Missionaries, 1780-1840: The Politics of a frontier zone. PhD. University of California, Los Angeles.

LICHTENSTEIN, H., 1815: Travels in Southern Africa. British and Foreign Public Library, London.

LYE, W.F., 1975: Andrew Smith's Journal of his expedition into the interior of South Africa 1834-36. A.A. Balkema, Cape Town.

MAINGARD, L.F. 1933. The Brikwa and the ethnic origins of the Bathlaping. South African Journal of Science VI 30:597-602.

MASON, R.J. 1986. Origins of the black people of Johannesburg and the Southern western Central Transvaal AD 350-1880. Occasional Paper 16. Johannesburg: University of the Witwatersrand Archaeological Research unit.

MASSIE, R.H. 1905. The Native Tribes of the Transvaal. Prepared by the General Staff, War Office. Printed for His Majesty's Stationary Office by Harrison & Sons, St. Martin's Lane.

MATAKOMA HERITAGE CONSULTANTS. 2006. Kalahari Manganese Mines, Heritage Assessment, on Umtu 281, Olive Pan 282, Gama 283

MORRIS, D. 1988. Engraved in place and time: a review of variability in the rock art of the Northern Cape and Karoo. South African Archaeological Bulletin 43:109-121.

MORRIS, D. 2002. Driekopseiland and 'the rain's magic power': history and landscape in a new interpretation of a Northern Cape rock engraving site. Unpublished Masters Dissertation, University of the Western Cape, Cape Town.

MORRIS, D. 2003. Rock art as source and resource: research and responsibility towards education, heritage and tourism. *South African Historical Journal* 49:193-206.

MORRIS, D. 2008. Archaeological and Heritage Phase 1, Impact Assessment for proposed upgrading of Sishen Mine Diesel Depot Storage Capacity at Kathu, Northern Cape. Kimberley: McGregor Museum.

ORPEN, J.M. 1964. Reminiscences of life in South Africa, From 1846 to the present day, with historical researches. C. Struik, Cape Town.

PARSONS, I. 2003. Lithic expressions of Later Stone Age life ways in the Northern Cape. *South African Archaeological Bulletin* 58:33-37.

PELSER, A.J. & Lombard, M. 2013. A report on the archaeological investigation of Stone Age finds on the Paling 434, Hay Magisterial District, near Postmasburg in the Northern Cape Province. EIA Report for Kia Batla Holdings, Craighall.

PGS HERITAGE. (2009). Heritage Impact Assessment for Ntsimbintle Mining (Pty) Ltd on Portions 1, 2, 3 and 8 of the farm Mamatwan 331 and the farm Moab 700 in the Kgalagadi District Municipality of the Northern Cape Province. Pretoria.

PGS HERITAGE. (2010). Heritage Impact Assessment for the Amari Kongoni Manganese Mine on Portion 1 and a section of the Remainder of the farm Kongoni 311 in the Kgalagadi District Municipality of the Northern Cape Province. Pretoria.

PGS HERITAGE. (2010). Heritage Impact Assessment for the Proposed Lehating Mining (Pty) Ltd underground manganese mine on Portions of the Farm Lehating 714, approximately 20km northwest of Hotazel, Northern Cape Province. Pretoria.

PISTORIUS, J.C.C. 1994. Eskom Archaeological Site Identification Guide. Johannesburg: Eskom.

SAKER, H. & J. ALDRIDGE, 1971. The Origins of the Langeberg Rebellion. *The Journal of African History* 12(2):299-317. Cambridge University Press

SAMANGAN, 1977: Kalahari Wealth: The story of manganese. Purnell & Sons Pty.Ltd., Cape Town.

SNYMAN, P.H.R. 1986. Die Langeberg-Rebellie en die totstandkoming van Olifantshoek. *Contree* 20:16-26.

SNYMAN, P.H.R. 1987. Die rol van sendelinge, die owerheid en ekonomiese faktore in die ontstaan van Kuruman, 1886-1913. *Contree* 22:5-14.

THACKERAY, A.I., THACKERAY, J.F. & BEAUMONT, P.B. 1983. Excavations at the Blinkklipkop specularite mine near Postmasburg, northern Cape. South African Archaeological Bulletin 38:17-25.

TLOU, T. & A. CAMPBELL, 1997: History of Botswana. Macmillan, Gaborone.

TRANSVAAL NATIVE AFFAIRS DEPARTMENT, 1905. Short History of the Native Tribes of the Transvaal. Pretoria: Government Printer & Stationary Office. Pretoria: State Library Reprint No. 24, 1968.

TRUTER, F.C., WASSERSTEIN, B., BOTHA, P.R., VISSER, D.J.L., BOARDMAN, L.G. & PAVER, B.A. 1938. The Geology and mineral deposits of the Oliphants Hoek area Cape Province. Geological Survey. Department of Mines. S.A. Government Printer, Pretoria.

VAN DEN BERG, G. 1996. 24 Battles and battle fields of the North-West Province. North West Tourism Association. Potchefstroom.

VAN DER MERWE, P.J., 1949: Pioniers van die Dorsland, Nasionale Pers, Kaapstad.

VAN RIET LOWE, C. 1956. Die verspreiding van Voorhistoriese Rotsgravures en – Skilderye in Suid-Afrika. Argeologiese Opname, Departement van Onderwys, Kuns en Wetenskap. Pretoria. Argeologiese Reeks No.VII.

VAN WARMELO, N.J. 1935. A Preliminary Survey of the Bantu Tribes of South Africa. Department of Native Affairs, Ethnological Publications Vol. V. Pretoria: Government Printer.

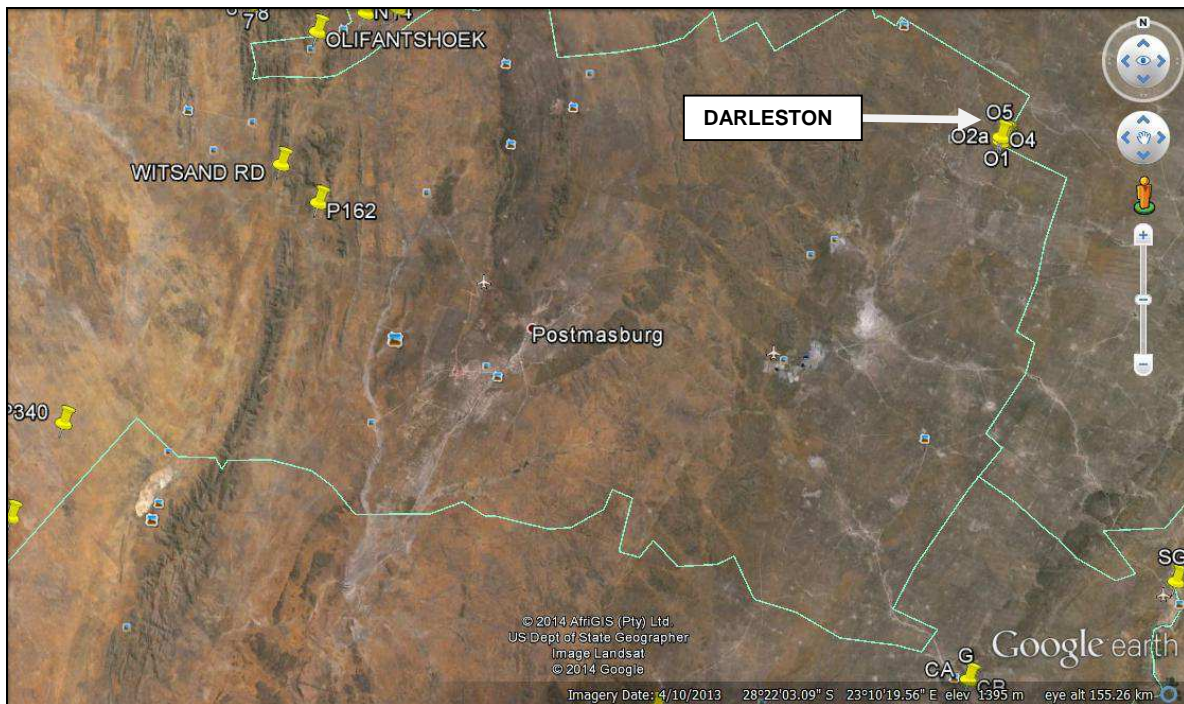
WAR OFFICE, 1905. The Native Tribes of the Transvaal. Prepared for the General Staff, War Office. Printed for His Majesty's Stationary Office by Harrison & Sons, St. Martin's Lane.

WESSELS, E. 2002. Veldslae – Anglo-Boereoorlog 1899-1902. LAPA Uitgewers, Pretoria.

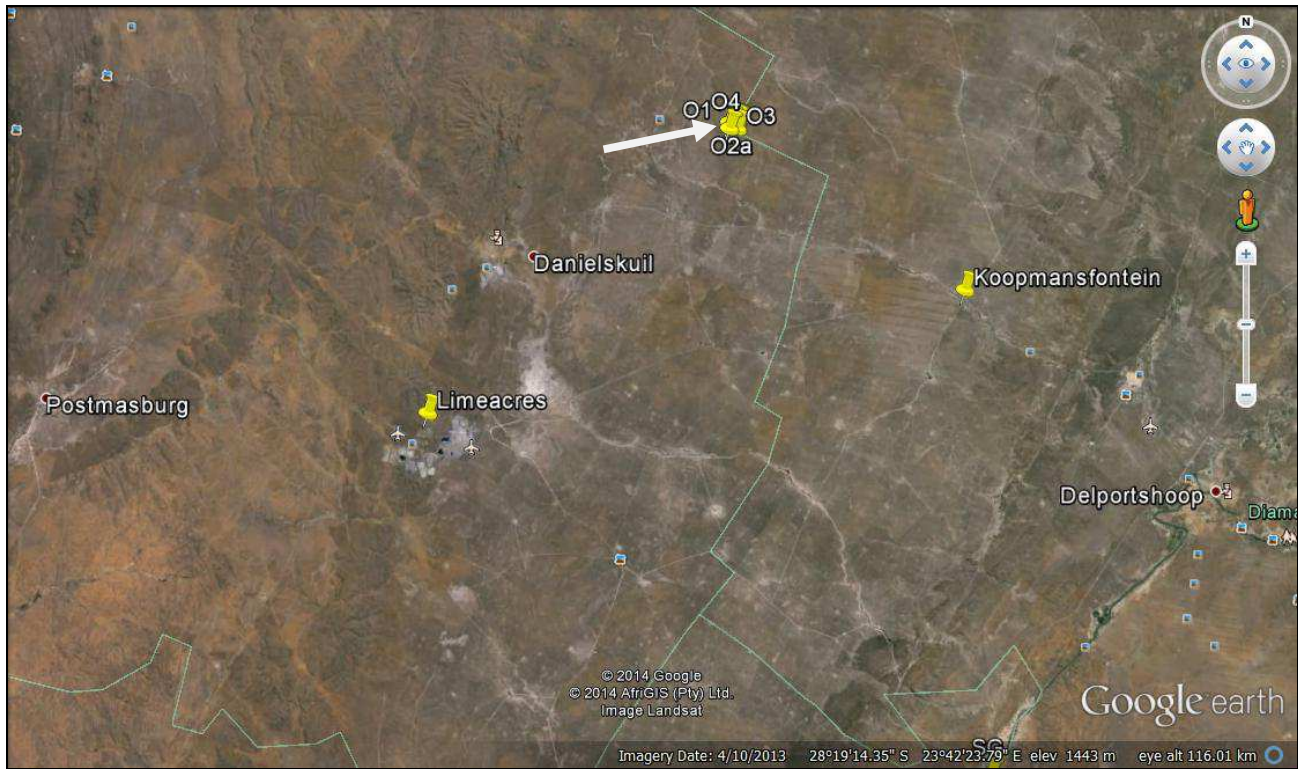
LIST OF ILLUSTRATIONS



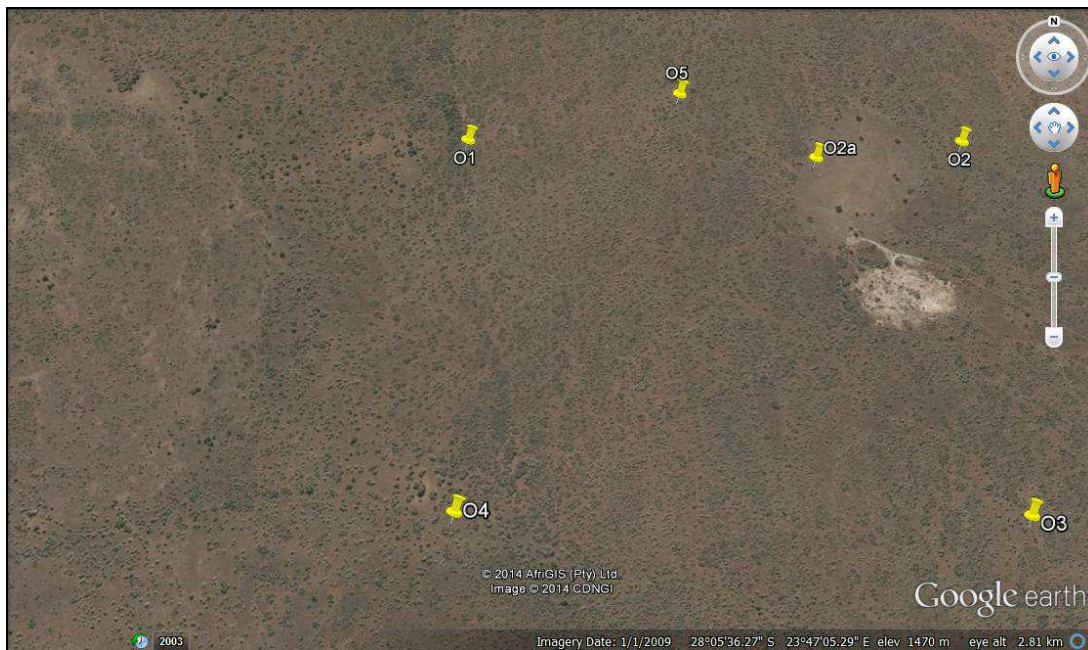
Map 1 Locality of Postmasburg, Daniëlskuil & Koopmansfontein in relation to the site.



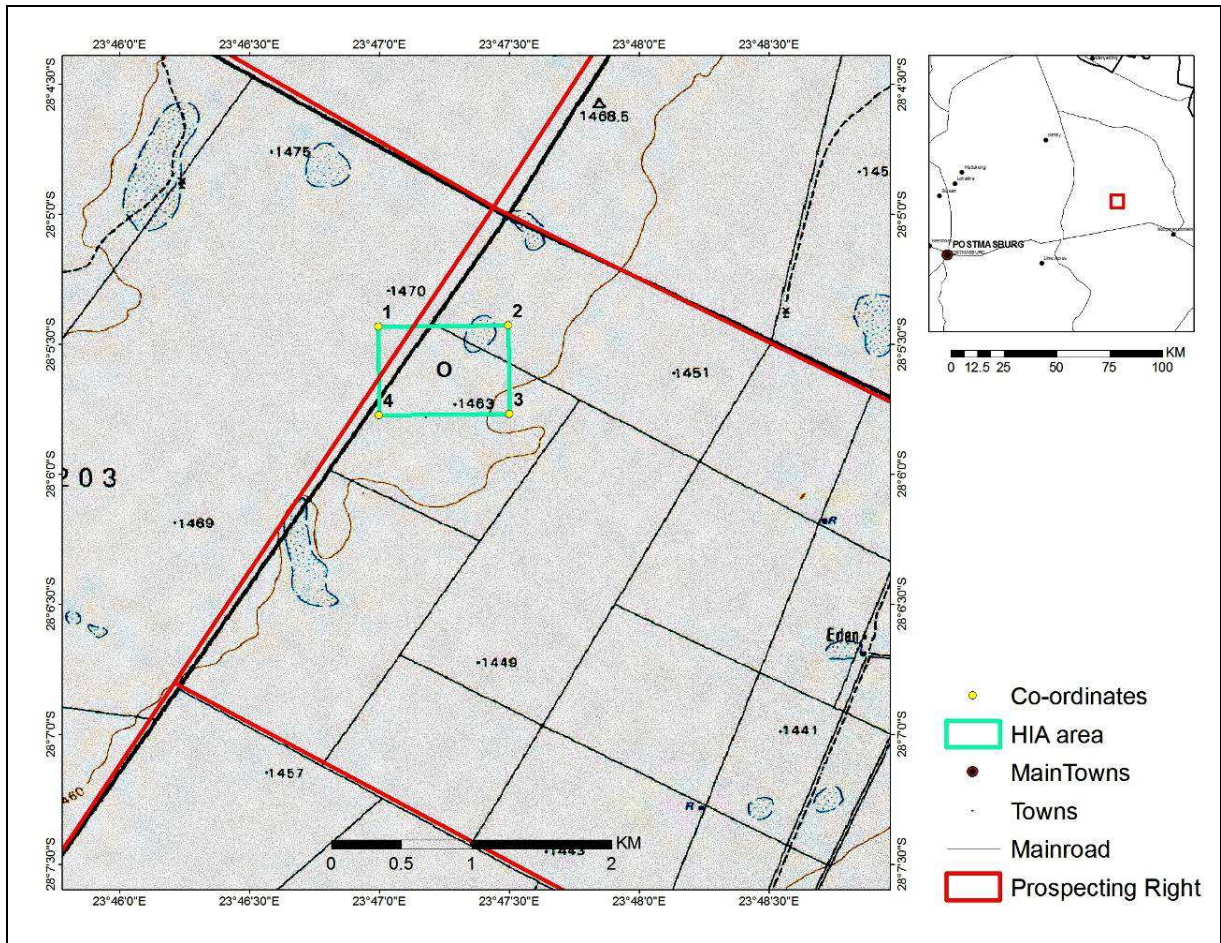
Map 2 Locality of Darlestone (site O) in relation to Postmasburg & Olifantshoek.



Map 3 Locality of Darleston (Site O) in relation to Postmasburg and other towns in the area.



Map 4 Darleston (site O) near Postmasburg with coordinate points indicated.



Map 5 Area O at Darleston near Postmasburg.



Fig.1 Point O2a at Darleston near Postmasburg.



Fig.2 Point O3 at Darleston near Postmasburg.



Fig.3 Point O3 at Darleston near Postmasburg.



Fig.4 Point O4 at Darleston near Postmasburg.



Fig.5 Point O4 at Darleston near Postmasburg.



Fig.6 Point O4 at Darleston near Postmasburg.



Fig.7 Point O5 at Darleston near Postmasburg.



Fig.8 Point O5 at Darleston near Postmasburg.



Fig.9 Flake scatters at Point O2a, Darleston near Postmasburg.



Fig.10 Flakes & cores at Point O2a, Darlestone (Map 4) (Pocket knife = 84mm).