

**PRELIMINARY HERITAGE ASSESSMENT FOR THE
RENSBURGDRIFT SUBSIDISED HOUSING DEVELOPMENT**



TABLE OF CONTENTS

1	INTRODUCTION	1
1.1	PROJECT DESCRIPTION	1
1.2	LOCATION	1
2	CULTURAL HERITAGE.....	2
3	PALEONTOLOGY	4
4	CONCLUSION.....	6

1 INTRODUCTION

1.1 PROJECT DESCRIPTION

The proposed project is a largely Brownfield development and is aimed at constructing residential units within existing household footprints together with the formalisation of supporting infrastructure such as internal roads, water supply pipelines and sewerage pipelines within the Inkosi Langalibalele Local Municipality. The project area is characterised by medium-density residential settlements. The proposed development will entail the following:

- The in-situ upgrade of 600 units
- Removal of indigenous vegetation for the construction of approximately 400 Greenfield subsidised housing units.
- The establishment of a community hall, creche, road networks, electrical servitudes, a Sports Facility, Transport Facility and Place(s) of Worship.

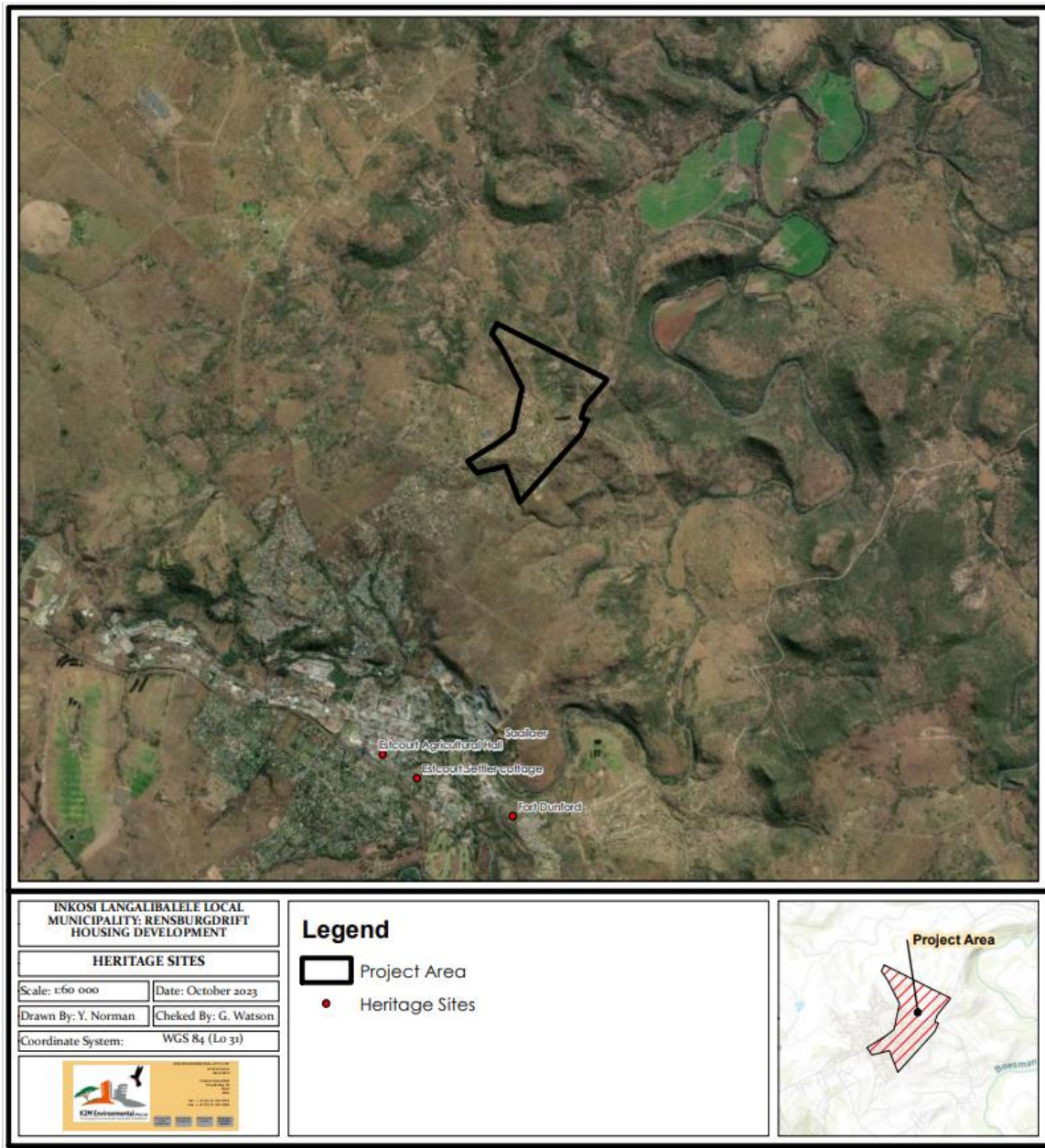
1.2 LOCATION

The proposed project is located in Ward 18 of the Inkosi Langalibalele Local Municipality and is located approximately 2.5 km northeast of Estcourt. The properties are described as Farm Portions 30 and 40 of the Farm 797 and the remainder of Portion 6 of the Farm 797.

2 CULTURAL HERITAGE

As indicated in Map 2.1 below, there are no heritage sites within the Rensburgdrift project area. The closest heritage site is the Saailaer Heritage Site, located approximately 2.92 km south of the project area.

Map 2.1: Heritage Sites



As depicted in Table 2.1 below, the Inkosi Langalibalele Local Municipality contains 14 Heritage Sites.

Table 2.1: Heritage Sites located within the Inkosi Langalibalele Municipality

SITE	PROTECTION	LATITUDE	LONGITUDE
Bloukrans Monument	Heritage Landmark	-28.85000	29.84167
Estcourt: Agricultural Hall	Provincial List	-29.00898	29.87341
Estcourt: Churchill Capture site	Not Proclaimed	-28.87341	29.76699
Estcourt: Settler cottage	Heritage Landmark	-29.01163	29.87761
Fort Dunford	Provincial List	-29.01582	29.88935
Frere: Bartle House	Heritage Landmark	-28.89368	29.77430
Greystone Farm	Heritage Landmark	-29.07196	29.79857
Hattingsvlakte	Heritage Landmark	-28.84719	29.77992
Military Cemetery: Ambleside	Heritage Landmark	-28.74151	29.79156
Military Cemetery: Chieveley	Provincial List	-28.83203	29.80800
Military Cemetery: Clousen	Not Proclaimed	-28.77884	29.80877
Saailaer	Heritage Landmark	-29.00781	29.88786
Weenen: Arabian Merchant	Heritage Landmark	-28.85236	30.08573
Weenen: Coolamgause Buidling	Heritage Landmark	-28.85242	30.08512

3 PALEONTOLOGY

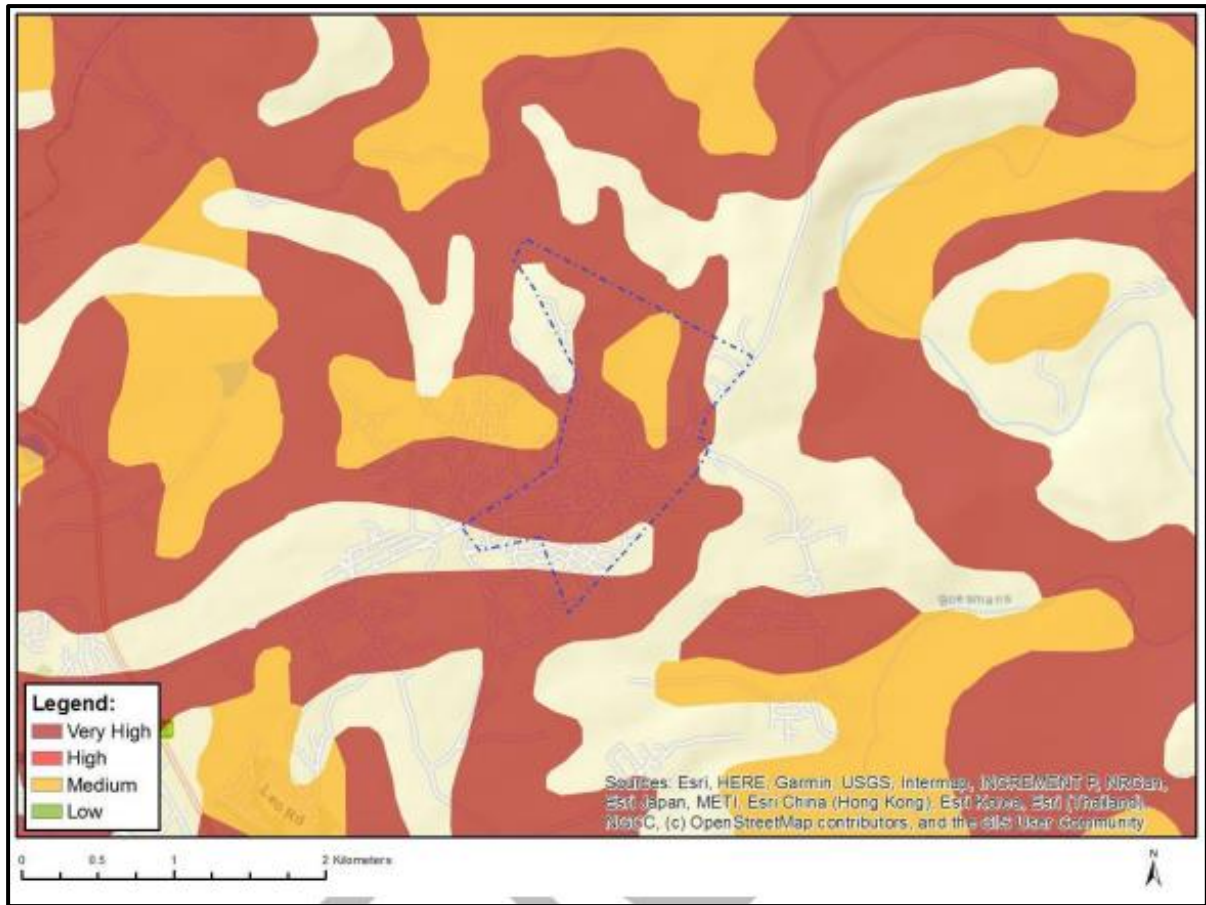
The impact of the proposed development on local fossil heritage is determined on the basis of the palaeontological sensitivity of the rock units concerned and the nature and scale of the proposed development, specifically with regards to the extent of fresh bedrock excavation. The corresponding colour notation for the various palaeontological sensitivity classes depicted in Table 3.1 below is adapted from the National Screening Tool.

Table 3:1: Colour Notation

COLOUR	SENSITIVITY	REQUIRED ACTION
DARK RED	VERY HIGH	Field assessment and protocol for finds is required
RED	HIGH	Desktop study is required and based on the outcome of the desktop study, a field assessment is likely
ORANGE	MEDIUM	Desktop study is required
GREEN	LOW	No palaeontological studies are required however a protocol for finds is required

As indicated in Figure 3.1 below, the project area is located in what is mapped out as Medium and Very High Relative Paleontological Sensitivity.

Figure 3:1: Relative Paleontology Sensitivity Map



In the event that any fossils are to be discovered during construction, the following needs to be undertaken:

- Work should cease immediately,
- The area must be cordoned off,
- The contractor must contact AMAFA;
- No fossils are to be removed by the workers/contractors

4 CONCLUSION

There are no cultural or heritage resources located within the Dukuduku project area and as such, the proposed development will not have a negative impact on any heritage sites. However, because the proposed development will entail a degree a Greenfield development, a field assessment on the palaeontological resources that may occur in the project area will need to be conducted to ensure that no palaeontological resources are negatively affected by the proposed development.