

UNIVERSITY OF THE
WITWATERSRAND,
JOHANNESBURG



Palaeosciences Centre, East Campus, 1 Jan Smuts Avenue, Braamfontein, Johannesburg
Private Bag 3, WITS 2050, Johannesburg, SOUTH AFRICA Tel: 011 717 6682

Marion.bamford@wits.ac.za

26 November 2019

Dr Ragna Redelstorff
Heritage Officer Archaeology, Palaeontology & Meteorites Unit
South African Heritage Resources Agency
111 Harrington Street
Cape Town, 8001

Dear Dr Redelstorff

RE: Request for Exemption of any Palaeontological Impact Assessment for the proposed small project on Farm The Rest 454 JT, Nelspruit, Mpumalanga Province

The owner of the property The Rest 454 JT, south of Nelspruit in Mpumalanga Province, proposes to develop the land for various small projects on Portions 23 and 24. This letter, from a professional palaeontologist, requests full exemption from any Palaeontological Impact Assessment for the reasons outlined below:

The farm lies only on ancient volcanic rocks of the Nelspruit Suite (an Archaean granitoid intrusion; 3500 – 3400 million years old; Robb et al., 2006) (Figure 1). These rocks are too old to contain fossils and are of the wrong kind to preserve fossils.

The whole of the farm The Rest 454 JT is indicated as having insignificant to zero sensitivity on the Sahris Palaeosensitivity map (Figure 2).

Reference cited:

Robb, L.J., Brandl, G., Anhaeusser, C.R., Poujol, M., 2006. Archaean Granitoid Intrusions. In: Johnson, M.R., Anhaeusser, C.R. and Thomas, R.J., (Eds). The Geology of South Africa. Geological Society of South Africa, Johannesburg / Council for Geoscience, Pretoria. Pp 57-94.

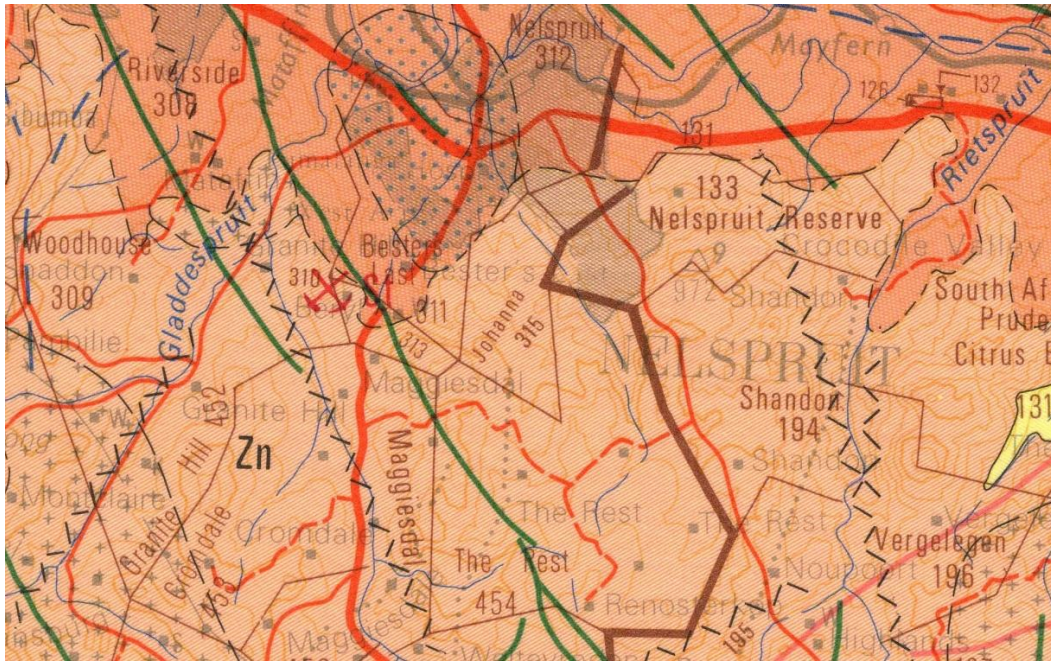


Figure 1: Geological map of the area south of Nelspruit and the Farm The Rest (centre) enlarged from the Council for Geosciences map 1:250 000 Barberton 2530. Geological Symbols: Zn = Nelspruit Suite.

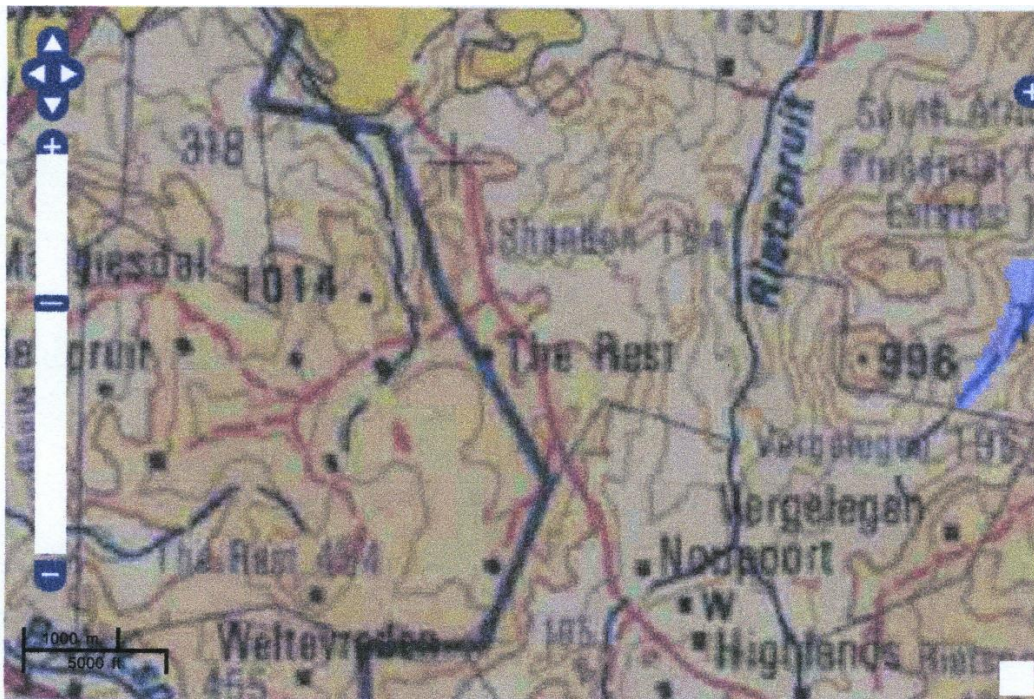


Figure 2: SAHRIS Palaeosensitivity Map for the area south of Nelspruit and the farm The Rest 454 JT (centre). Background colours indicate the following degrees of sensitivity: red = very highly sensitive; orange/yellow = high; green = moderate; blue = low; grey = insignificant/zero.

We request, therefore, that no further PIA is required for this project, and as far as the palaeontology is concerned, the project may proceed.

If you need further information, please do not hesitate to contact me.

Yours faithfully

A handwritten signature in blue ink, reading "M Bamford", with a horizontal line underneath.

Prof Marion Bamford PhD
Director: ESI