

Proposed Greenfields Rietvlei Opencast Coal Mining Operation

Steve Tshwete Local Municipality, Nkangala District Municipality, Mpumalanga Province

Farm: Remaining Extent of Rietvlei 397 JS and Portion 1 of Rietvlei 397 JS

Fourie, H. Dr heidicindy@yahoo.com

012 322 7632/012 993 3110

Palaeontological Impact Assessment: Phase 1 Field Study

Commissioned by: WSP Environmental (Pty) Ltd

WSP House, Bryanston Place, 199 Bryanston Drive, 2191

011 300 6089

2016/10/28

Ref: MP30/5/1/2/2/10105MR

DEA 12/9/11/L1416/6



B. Executive summary

Outline of the development project: WSP Environmental (Pty) Ltd appointed Dr H. Fourie, a palaeontologist, to undertake a Paleontological Impact Assessment (PIA), Phase 1 Field study of the suitability of the proposed Greenfields Rietvlei Opencast Coal Mining Operation on the Remaining Extent of the Farm Rietvlei 397 JS and Portion 1 of the Farm Rietvlei 397 JS, in the Tshwete Local Municipality, Nkangala District Municipality, Mpumalanga Province.

The applicant, Rietvlei Mining Company (Pty) Ltd proposes to develop the site into the Greenfields Rietvlei Opencast Coal Mining Operation northeast of Middelburg off the R555 road.

The Project includes one Option (Figure 2):

Option 1: A blocked area following the borders of the Farm Rietvlei 397, except for parts of the northern and eastern boundaries where it follows the upper boundary of the Vryheid Formation and the D1433 District road respectively. The size of the site to be mined is approximately 800 ha.

Legal requirements:-

The **National Heritage Resources Act (Act No. 25 of 1999) (NHRA)** requires that all heritage resources, that is, all places or objects of aesthetic, architectural, historical, scientific, social, spiritual, linguistic or technological value or significance are protected. The Republic of South Africa (RSA) has a remarkably rich fossil record that stretches back in time for some 3.5 billion years and must be protected for its scientific value. Fossil heritage of national and international significance is found within all provinces of the RSA. South Africa's unique and non-renewable palaeontological heritage is protected in terms of the National Heritage Resources Act. According to this act, palaeontological resources may not be excavated, damaged, destroyed or otherwise impacted by any development without prior assessment and without a permit from the relevant heritage resources authority.

The main aim of the assessment process is to document resources in the development area and identify both the negative and positive impacts that the development brings to the receiving environment. The PIA therefore identifies palaeontological resources in the area to be developed and makes recommendations for protection or mitigation of these resources.

For this study, resources such as geological maps, scientific literature, institutional fossil collections, satellite images, aerial maps and topographical maps were used. It provides an assessment of the observed or inferred palaeontological heritage within the study area, with recommendations (if any) for further specialist palaeontological input where this is considered necessary.

A Palaeontological Impact Assessment is generally warranted where rock units of LOW to VERY HIGH palaeontological sensitivity are concerned, levels of bedrock exposure within the study area are adequate; large scale projects with high potential heritage impact are planned; and where the distribution and nature of fossil remains in the proposed area is unknown. The specialist will inform whether further monitoring and mitigation are necessary.

Types and ranges of heritage resources as outlined in Section 3 of the National Heritage Resources Act (Act No.25 of 1999):

(i) (i) objects recovered from the soil or waters of South Africa, including archaeological and palaeontological objects and material, meteorites and rare geological specimens.

This report adheres to the guidelines of Section 38 (1) of the National Heritage Resources Act (Act No. 25 of 1999).

Subject to the provisions of subsections (7), (8) and (9), any person who intends to undertake a development categorised as (a) the construction of a road, wall, power line, pipeline, canal or other similar form of linear

development or barrier exceeding 300 m in length; (b) the construction of a bridge or similar structure exceeding 50 m in length; (c) any development or other activity which will change the character of a site (see Section 38); (d) the re-zoning of a site exceeding 10 000 m² in extent; (e) or any other category of development provided for in regulations by SAHRA or a PHRA authority.

This report aims to provide comment and recommendations on the potential impacts that the proposed development could have on the fossil heritage of the area and to state if any mitigation or conservation measures are necessary.

Outline of the geology and the palaeontology:

The geology was obtained from map 1:100 000, Geology of the Republic of South Africa (Visser 1984) and 1:250 000 2528 Pretoria Geological Map (Walraven 1978).

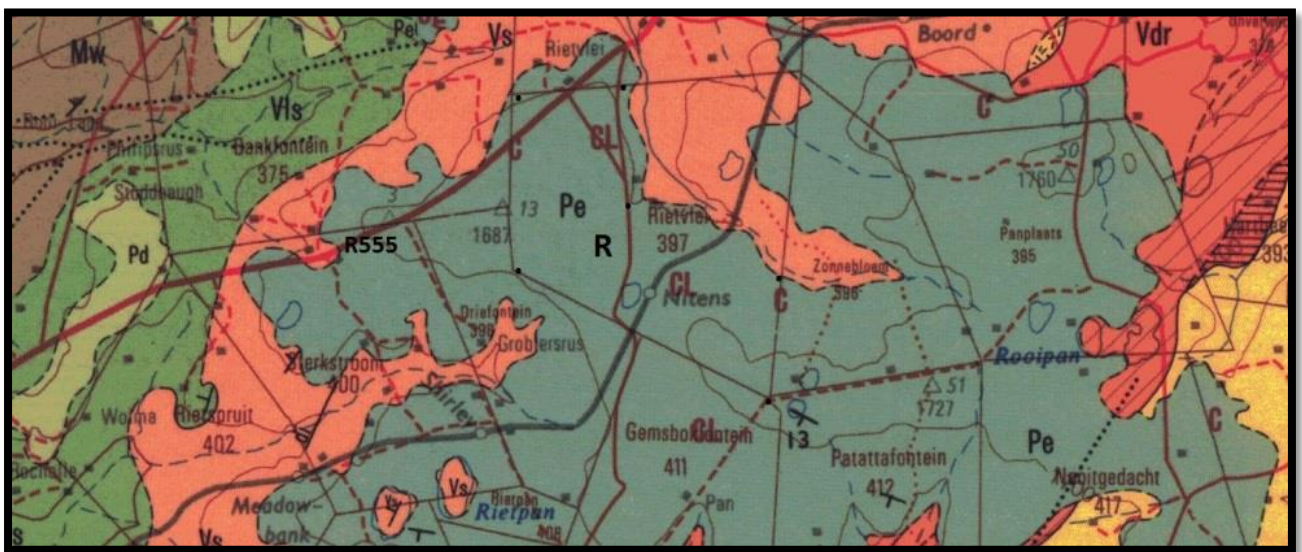


Figure 4: The geology of the development area.

Legend to map and short explanation.

Pe – (grey) Sandstone, shaly sandstone, grit, shale, conglomerate and coal near base and top. Vryheid Formation, Ecca Group, Karoo Supergroup. Permian.

Pd – (khaki) Tillite, shale. Dwyka Group, Karoo Supergroup. Permian.

Vls – (green) Shale, sandstone, conglomerate, volcanic rocks. Loskop Formation. Vaalian.

Vs – (orange) Volcanic rocks (porphyritic amygdaloidal red rhyolite, subordinate andesite). Selons River Formation, Rooiberg Group. Transvaal Supergroup. Vaalian.

..... – (black) Lineament (Landsat, aeromagnetic).

----- Concealed geological boundary.

R – Position Rietvlei 397, dots demarcate border of proposed mine.

Mining Activities:

C – Coal.

CL – Flint fire-clay.

Summary of findings: The Phase 1 PIA Field study was undertaken towards the middle of October 2016 in the summer in wet and hot conditions and the following is reported:

Formations present are part of the Karoo Supergroup. The Karoo Supergroup is renowned for its fossil wealth. The Vryheid Formation (Pe,Pv), Ecca Group is rich in plant fossils such as the *Glossopteris* flora represented by stumps, leaves, pollen and fructifications. This formation is early to mid-Permian (Palaeozoic) in age and consists of sandstone, shaly sandstone, grit, conglomerate, coal and shale. Coal seams are present in the Vryheid Formation within the sandstone and shale layers. Fossils are mainly present in the grey shale which is interlayered between the coal seams (Kent 1980, Visser 1989). Borehole logs in the coalfields show the following layers; soil, shale and sandstone, shale and sandstone interbedded, sandstone, coal, conglomerate reworked diamictite, Dwarka Tillite, and the Pre-Karoo Basement (Figure 3).

Fossils in South Africa mainly occur in rocks of sedimentary nature and not in rocks from igneous or metamorphic nature. Therefore, if there is the presence of Karoo Supergroup strata the palaeontological sensitivity can generally be LOW to VERY HIGH, and here locally **VERY HIGH** for the Vryheid Formation (SG 2.2 SAHRA APMHOB, 2012).

Recommendation:

The potential impact of the development on fossil heritage is **VERY HIGH** and therefore a field survey or further mitigation or conservation measures are necessary for this development (according to SAHRA protocol). A Phase 2 PIA and or mitigation may be recommended. The overburden and inter-burden consisting of Ecca rocks must be surveyed for fossiliferous outcrops (shale). Special care must be taken during the digging, drilling, blasting and excavating of foundations, trenches, channels and footings and removal of overburden. An appropriate protocol and management plan are attached (Appendix 2).

During the survey it was found that the site is directly underlain by Karoo shale, shaly sandstone, grit, conglomerate and sandstone of the Vryheid Formation and is presently underutilised. Recent structures such as graves are present. It is located on a gentle sloping topography. The development includes only the opencast mine and related infrastructure.

The survey was done in summer, conditions were cloudy, wet and hot and the area is covered by overburden, vegetation, natural grassland and other land uses include power lines. The development will take place on the Vryheid Formation known for its plant fossils. The development will benefit the economy as mining will expand. There is one Option with a very high impact.

The Project includes one Option (Figure 2):

Option 1: A blocked area following the borders of the Farm Rietvlei 397, except for parts of the northern and eastern boundaries where it follows the upper boundary of the Vryheid Formation and the D1433 District road respectively. The size of the site to be mined is approximately 800 ha.

Concerns/threats:

1. Threats are earth moving equipment/machinery (for example haul trucks, front end loaders, excavators, graders, dozers) during construction, the sealing-in or destruction of the fossils by development, vehicle traffic, human disturbance and opencast mining.
2. Mitigation is needed (Appendix 2). Permission is needed from SAHRA.
3. No consultation with parties was necessary. Shale cannot be blasted without being checked for plant fossils. It may be more economical for the mine to employ a full-time palaeobotanist for the Life of Mine depending on frequency of shale layers.

Stakeholders: Developer – Rietvlei Mining Company (Pty) Ltd, Private Bag X1, Marshalltown, 2107. Tel: 011 263 9505. Tel. 011 263 9505.

Environmental – WSP Environmental (Pty) Ltd, WSP House, Bryanston Place, 199 Bryanston Drive, Bryanston, 2191

Landowner –Department of Rural Development and Land Reform, P.O. Box X11305, Nelspruit, 1200. Tel. 013 755 3499.

C. Table of Contents

A. Title page	1
B. Executive Summary	2
C. Table of Contents	4
D. Background Information on the project	5
E. Description of the Property or Affected Environment	7
F. Description of the Geological Setting	8
G. Background to Palaeontology of the area	18
H. Description of the Methodology	20
I. Description of significant fossil occurrences	23
J. Recommendation	23
K. Conclusions	24
L. Bibliography	24
Declaration	25
Appendix 1: Examples of Vryheid Formation fossils	26
Appendix 2: Protocol for finds and Management Plan	27
Appendix 3: Table	30

D. Background information on the project

Report

This report is part of the environmental impact assessment process under the National Environmental Management Act, as amended (Act No. 107 of 1998) (NEMA) and includes Appendix 6 (GN R38282 of 4 December 2014) of the Environmental Impact Assessment Regulations (see Appendix 3).

Outline of development

This report discusses and aims to provide the applicant with information regarding the location of palaeontological material that will be impacted by the development. In the pre-construction phase it is necessary for the applicant to apply for the relevant permit from the South African Heritage Resources Agency (SAHRA / PHRA).

An opencast operation utilising conventional truck and shovel mining methods is proposed for the Rietvlei Mine. It will consist of one pit. The pit will be divided into northern and southern sections by a single box cut situated toward the centre of the opencast pit. The mining operation will initially progress in a northerly direction. The initial box cut has been designed to be 80 m wide, which is double the width of a standard mining strip. This will ensure sufficient volume for the adjacent second and subsequent strip of hard material volumes to fit into the void created.

The construction phase should be completed within 18 months, whilst operational life of mine will be 20 years producing an average of 2.5 million tonnes per annum (Mtpa) and a total of 47 169 kt of run of mine (RoM) of coal. Opencast strip mining will occur with concurrent rehabilitation. The decommissioning and closure phase is estimated to take an additional two years to complete. Rehabilitation will form an integral part of the mining

process and the final rehabilitated land will not reach further than four mining strips behind the mining face, thus approximately 160 m.

Related infrastructure:

1. Coal Processing Plant
2. Power Supply
3. Water Supply – Potable water, Fire water, Clean and dirty water system (including 2 pollution control dams)
4. Road infrastructure
5. Buildings and facilities
6. Overburden stockpile
7. Coal discard stockpile, and
8. Sewage plant

The mining operation will promote access to mineral resources, job creation for Historically Disadvantaged South Africans, utilise and expand skills base, promote employment and advance social and economic welfare, promote beneficiation of mineral commodities, and promote sustainable development and growth of the mining industry. Coal will be sold to Eskom.

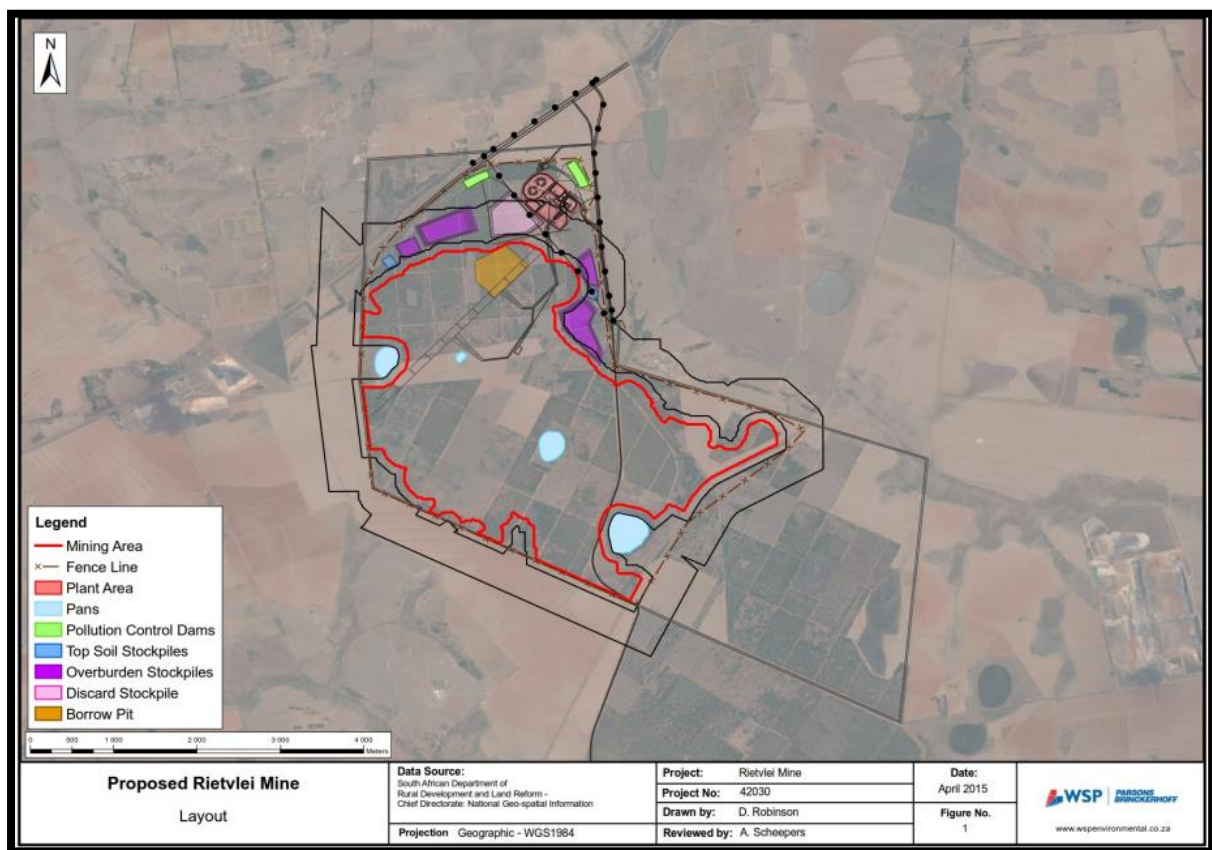


Figure 1: Proposed Rietvlei Mine Layout plan (WSP Environmental).

The Project includes one Option (Figure 2):

Option 1: A blocked area following the borders of the Farm Rietvlei 397, except for parts of the northern and eastern boundaries where it follows the upper boundary of the Vryheid Formation and the D1433 District road respectively. The size of the site to be mined is approximately 800 ha.

Rezoning/ and or subdivision of land: From Agriculture to Mining.

Name of developer and consultant: Rietvlei Mining Company (Pty) Ltd and WSP Environmental (Pty) Ltd.

Terms of reference: Dr H. Fourie is a palaeontologist commissioned to do a palaeontological impact assessment: field study to ascertain if any palaeontological sensitive material is present in the development area. This study will advise on the impact on fossil heritage mitigation or conservation necessary, if any.

Dr Fourie obtained a Ph.D from the Bernard Price Institute for Palaeontological Research (now ESI), University of the Witwatersrand. Her undergraduate degree is in Geology and Zoology. She specialises in vertebrate morphology and function concentrating on the Therapsid Therocephalia. For the past ten years she carried out field work in the Eastern Cape, Free State, Gauteng, Limpopo and Mpumalanga Provinces. Dr Fourie has been employed at the Ditsong: National Museum of Natural History in Pretoria (formerly Transvaal Museum) for 21 years.

Legislative requirements: South African Heritage Resources Agency (SAHRA) for issue of permits if necessary. National Heritage Resources Act (Act No. 25 of 1999). An electronic copy of this report must be supplied to SAHRA.

E. Description of property or affected environment

Location and depth:

The proposed Project is located approximately 50 km northeast of the town of eMalahleni and 22 km northeast of the town of Middelburg in the Mpumalanga Province. It is linked to Middelburg by the R555 road. The proposed mining area lies within a farming area within the larger Witbank Coalfield and is bordered by private properties on all sides. The site is presently used for agriculture and forestry. There are several mines in the area.

Depth is determined by mining operations. Two seams from the Ecca Group will be mined. Conventional truck and shovel methods of mining are proposed.

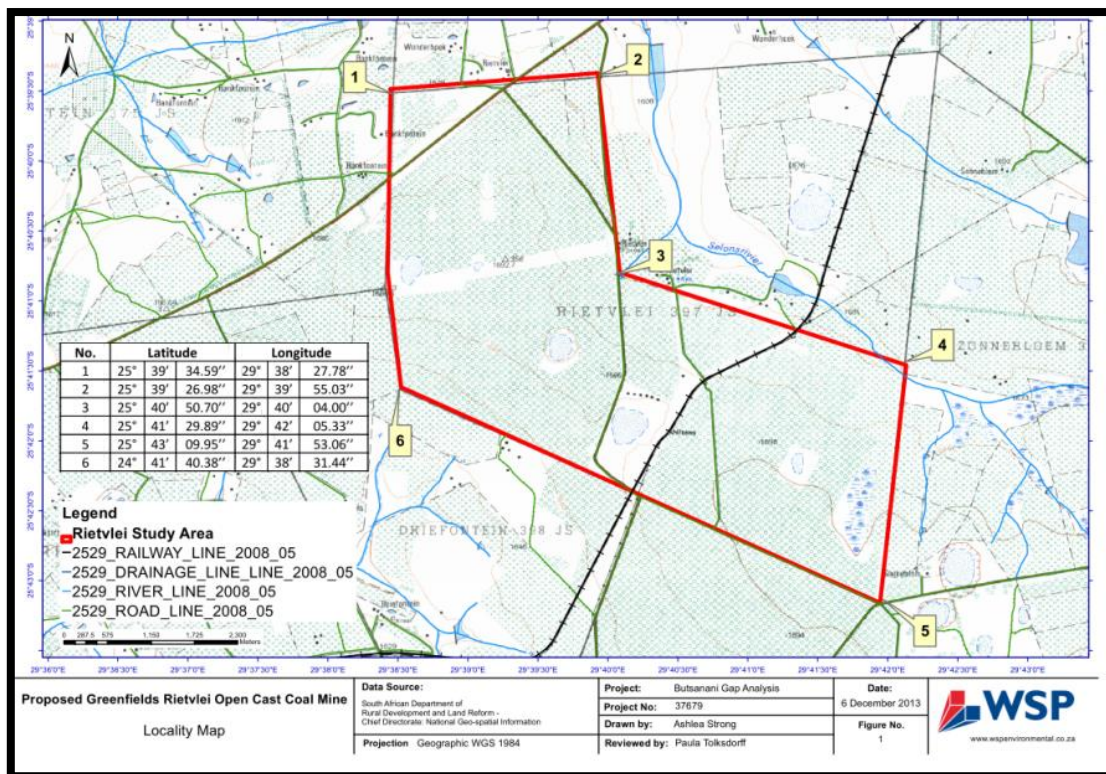


Figure 2: Topographic map to show location of Mine (WSP Environmental).

The Project includes one Option (Figure 2):

Option 1: A blocked area following the borders of the Farm Rietvlei 397, except for parts of the northern and eastern boundaries where it follows the upper boundary of the Vryheid Formation and the D1433 District road respectively. The size of the site to be mined is approximately 800 ha.

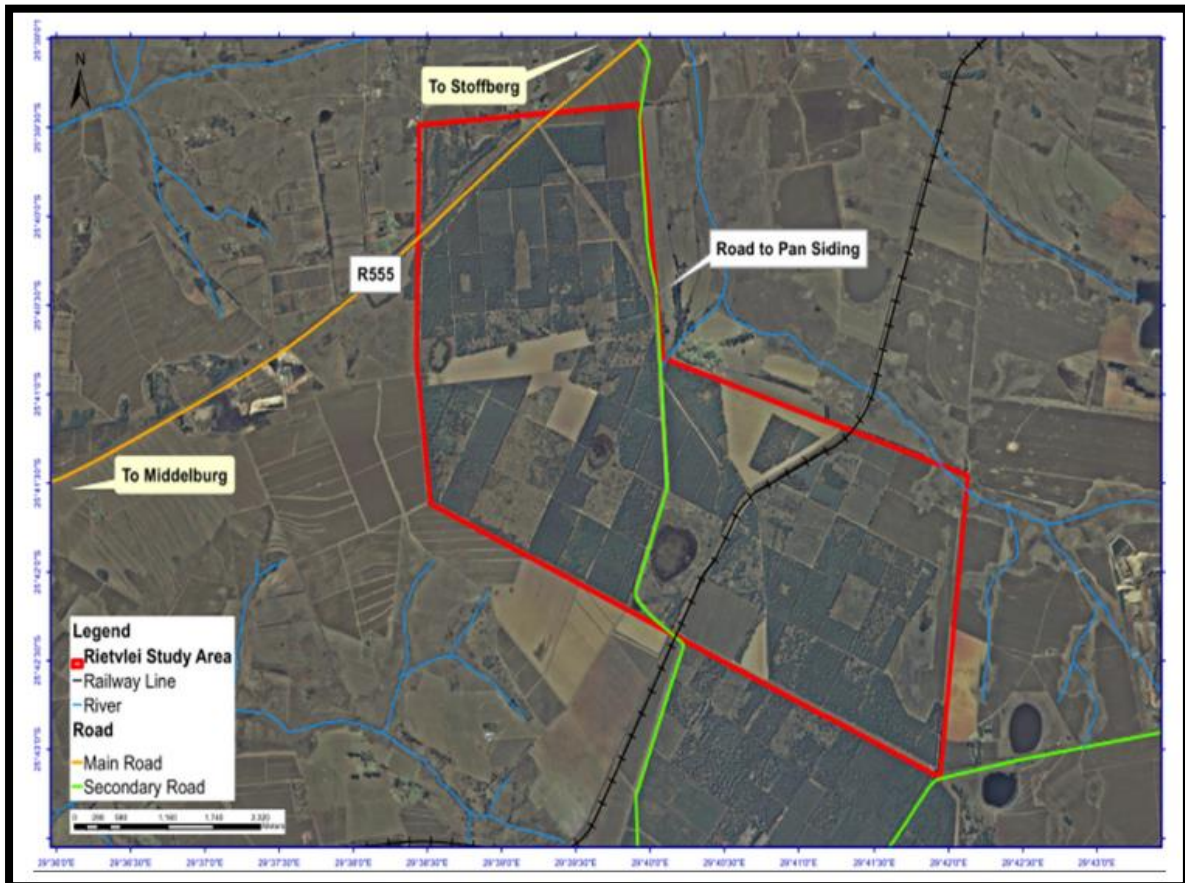


Figure 3: Google.earth image showing location of Mine (WSP Environmental).

The bulk of the site is underlain by the flat-lying Vryheid Formation of the Ecca Group, Karoo Supergroup sediments covered by grassland, wetland and trees.

F. Description of the Geological Setting

Description of the rock units:

Large areas of the southern African continent are covered by the Karoo Supergroup. The Ecca Group is early to mid-Permian (545-250 Ma) in age. Sediments of the Ecca group are lacustrine and marine to fluvio-deltaic (Snyman 1996). The Ecca group is known for its coal (mainly the Vryheid Formation) (five coal seams) and uranium. Coalfields formed due to the accumulation of plant material in shallow and large swampy deltas (see Appendix 1). The Ecca Group conformably overlies the Dwyka Group and is conformably overlain by the Beaufort Group, Karoo Supergroup. It consists essentially of mudrock (shale), but sandstone-rich units occur towards the margins of the present main Karoo basin in the south, west and north-east, with coal seams also being present in the north-east (Kent 1980, Johnson 2009).

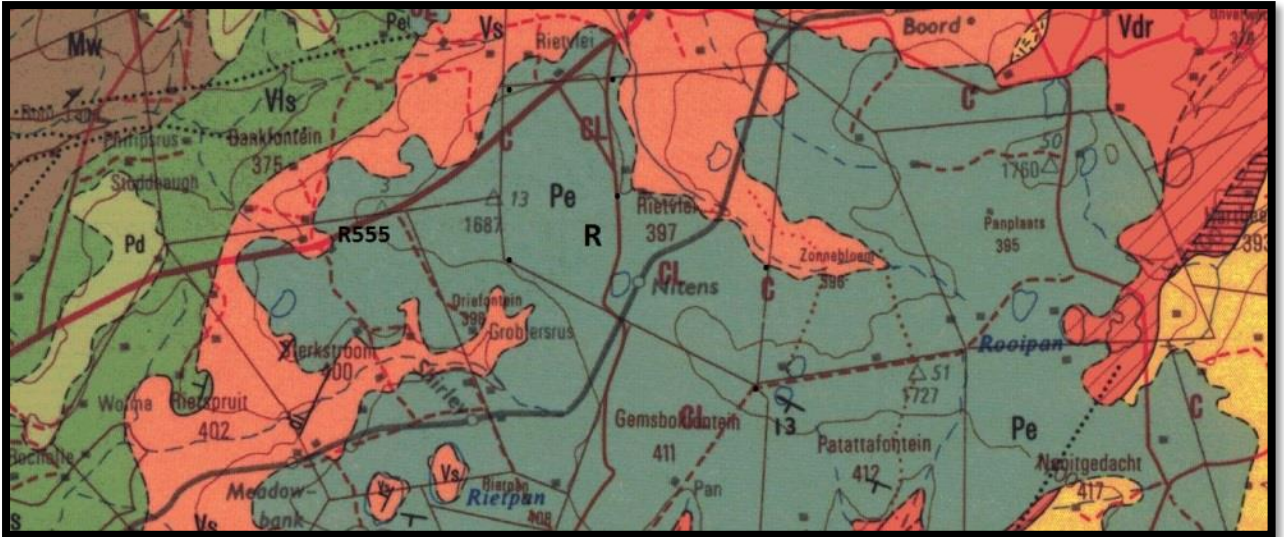


Figure 4: Excerpt of 1:250 000 Geological Map 2528 Pretoria (Walraven 1978).

Legend to map and short explanation.

Pe – (grey) Sandstone, shaly sandstone, grit, shale, conglomerate and coal near base and top. Vryheid Formation, Ecca Group, Karoo Supergroup. Permian.

Pd – (khaki) Tillite, shale. Dwyka Group, Karoo Supergroup. Permian.

Vls – (green) Shale, sandstone, conglomerate, volcanic rocks. Loskop Formation. Vaalian.

Vs – (orange) Volcanic rocks (porphyritic amygdaloidal red rhyolite, subordinate andesite). Selons River Formation, Rooiberg Group. Transvaal Supergroup. Vaalian.

..... – (black) Lineament (Landsat, aeromagnetic).

----- - Concealed geological boundary.

R – Position Rietvlei 397, dots demarcate border of proposed mine.

The Vryheid Formation is named after the type area of Vryheid-Volksrust. In the north-eastern part of the basin the Vryheid Formation thins and eventually wedges out towards the south, southwest and west with increasing distance from its source area to the east and northeast (Johnson 2009). The Vryheid Formation consists essentially of sandstone, shale, and subordinate coal beds, and has a maximum total thickness of 500 m. It forms part of the Middle Ecca (Kent 1980). This formation has the largest coal reserves in South Africa. The pro-delta sediments are characterised by trace and plants fossils (Snyman 1996).

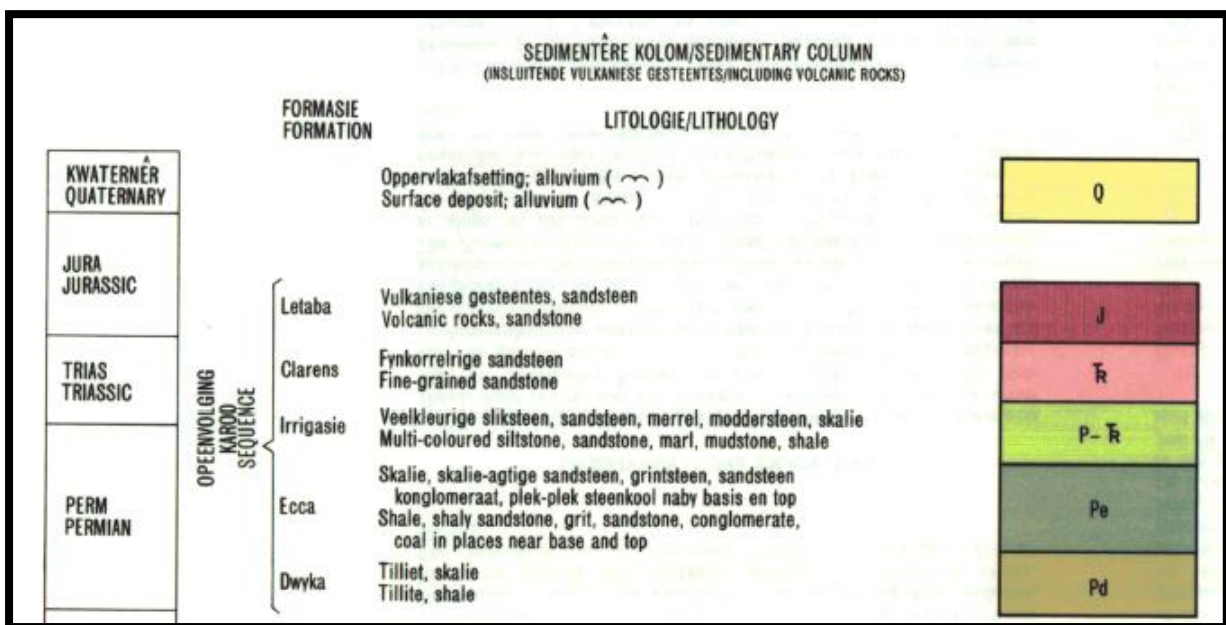
Coal has always been the main energy source in industrial South Africa. It is in Mpumalanga, south of the N4, that most of the coal-fired power stations are found. Eskom is by far the biggest electricity generator in Africa. Thick layers of coal just below the surface are suited to open-cast mining and where the overlying sediments are too thick, shallow underground mining. In 2003, coal was South Africa's third most valuable mineral commodity and is also used by Sasol for fuel- and chemicals-from-coal (Norman and Whitfield 2006). Grodner and Cairncross (2003) proposed a 3-D model of the Witbank Coalfield to allow easy evaluation of the sedimentary rocks, both through space and time. Through this, one can interpret the environmental conditions present at the time of deposition of the sediments. This can improve mine planning and mining techniques. The Vryheid Formation is underlain by the Dwyka Group and gradually overlain by mudstones (and shale) and sandstones of the Volksrust Formation.

The Transvaal Supergroup fills an east-west elongated basin in the south-central part of the old Transvaal (now North – West, Gauteng and Mpumalanga Provinces) as far south as Potchefstroom. It is Vaalian in age,

approximately 2600 Ma to 2100 Ma. A maximum thickness of the Transvaal Supergroup reaches 2000 m in the north-eastern section. An east-west elongated basin is filled with clastic, volcanic and chemical sedimentary rocks. Three groups based on lithological differences have been established: they are the Rooiberg, Chuniespoort, and Pretoria Groups as well as other smaller groups (Kent 1980). It is the Bushveld Complex that is responsible for the tilting of the Transvaal sediments and the heat of its intrusion having created andalusite crystals (Norman and Whitfield 2006). This Supergroup is underlain by the Ventersdorp, Witwatersrand and Pongola Supergroups, and the Dominion Group. The Rooiberg Group is divided into the Formations Damwal and Selonsrivier in the Loskop dam area (Visser 1989).

The Project includes one Option (Figure 2):

Option 1: A blocked area following the borders of the Farm Rietvlei 397, except for parts of the northern and eastern boundaries where it follows the upper boundary of the Vryheid Formation and the D1433 District road respectively. The size of the site to be mined is approximately 800 ha.



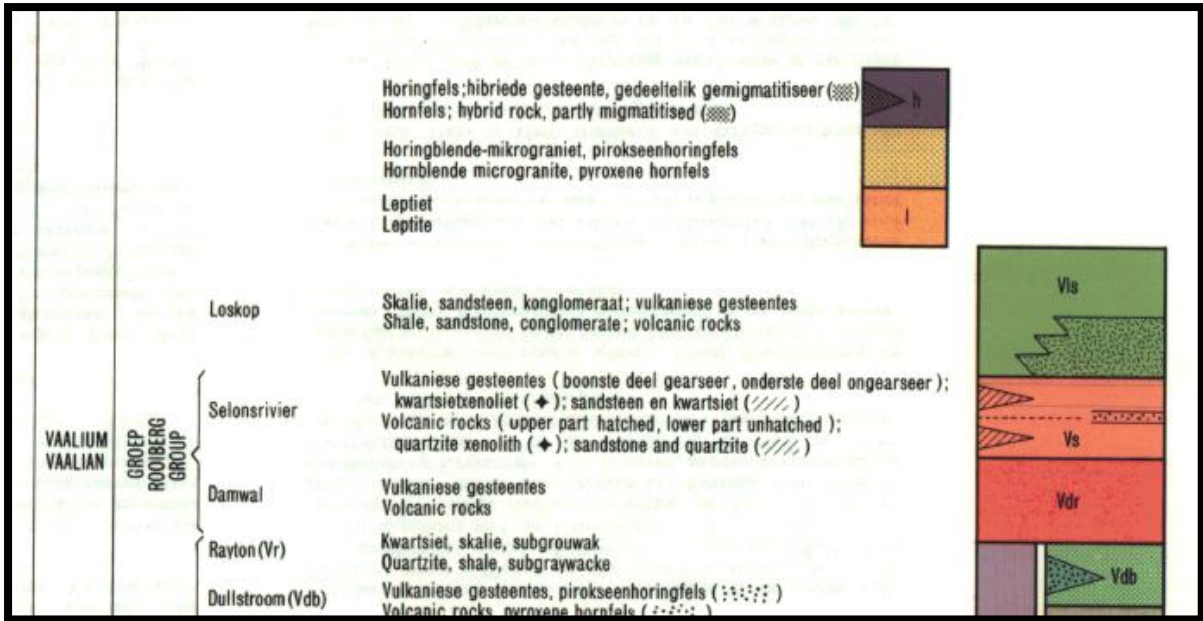


Figure 5: Lithostratigraphic column to show the Ecca Group and Rooiberg Group (Walraven 1978).

Ecca rocks are stable and lend themselves well to developments. It is only unstable in or directly above mining activities (Snyman 1996). The site itself is situated on the flat-lying Vryheid Formation, Ecca Group, Karoo Supergroup. Dolerite dykes do occur throughout the Karoo Supergroup. Structural geological features such as dykes and faults can have a measurable influence on ground water flow and mass transport.

The typical colours for the Vryheid Formation are grey and yellow for the sediments and black for the coal seam. The thickness of the grey shale can vary and this is interlayered with the also variable yellow sandstone and coal seams.

The walk through was done towards the middle of October, conditions were cloudy, hot and dry. Photographs below show the gentle sloping topography. A variety of soil types (overburden and topsoil) will be present. The Vryheid Formation sediments may attain a thickness of 120 – 140 m. A typical profile includes soil and clay, sandstone and siltstone, shale, 2 upper seam, shale, 2 seam, sandstone, no 1 seam, shale and dolomite at the bottom.

Field Observations



Figure 6: The site is currently underutilised, but is covered by Highveld grassland. Photograph shows northern section of the Farm Rietvlei opposite the R555 Road. This section will not be mined.



Figure 7: Section next to the D1433 District Road at turn off from the R555 Road onto the Pan Siding Road.



Figure 8: The northern section next to the D1433 District Road. This section will be used for the related infrastructure.



Figure 9: Gritty sandstone on road close to where second road from the R555 Road enters the site at cemetery.



Figure 10: View where dirt roads meet at the cemetery. Some of the stockpiles will be located here.



Figure 11: View in section on the boundary of the site close to the railway line. This area will be mined, mining will not extend beyond railway line.



Figure 12: View at wetland. Most of the dirt road is covered in a fine gravel from the gritty sandstone. This is a no-go area.



Figure 13: View of grassland in the southern section, rocky outcrops are scarce. This area will be mined.



Figure 14: Photograph of neighbouring farm at railway crossing.



Figure 15: View to show trees and red soil. Area that will be mined.



Figure 16: View at crossing of internal roads. This site is closer to where the infrastructure will be located.



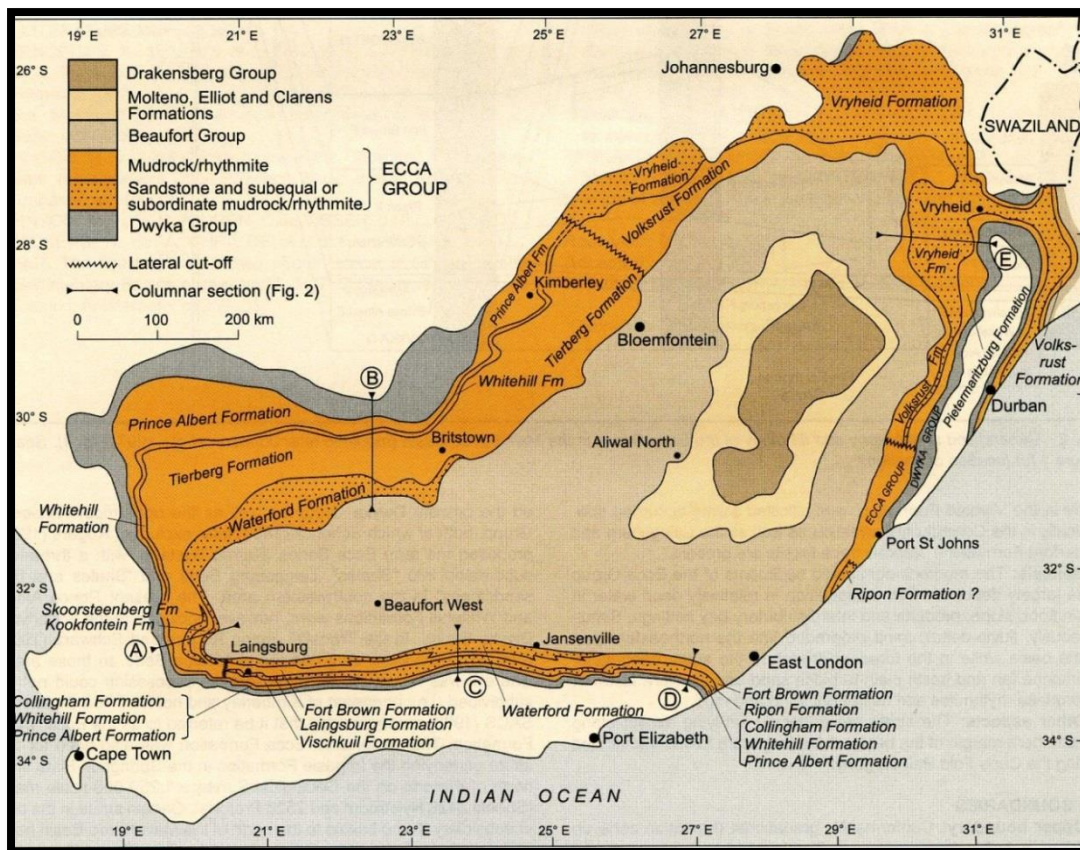
Figure 17: Grassland in area that will be mined. Note sloping topography.

There is some concern with the project due to the presence of the Vryheid Formation. The depth of the Formation can be verified with geological cores. The topsoil, subsoil and overburden must be surveyed for fossils and Mitigation is needed for the shale layer.

It is recommended to wait for the response from SAHRA on the Phase 1 Field study (this report), and if mitigation is recommended then the SAHRA protocol must be followed. Alternatives will not be feasible as all proposed development portions and surrounding areas are on the Vryheid Formation.

G. Background to Palaeontology of the area

Summary: When rock units of moderate to very high palaeontological sensitivity are present within the development footprint, a desk top and or field scoping (survey) study by a professional palaeontologist is usually warranted. The main purpose of a field scoping (survey) study would be to identify any areas within the development footprint where specialist palaeontological mitigation during the construction phase may be required (SG 2.2 SAHRA AMPHOB, 2012).



Map 1: Extent of the Ecca Group, more specifically the Vryheid Formation (Johnson 2009).

The Ecca Group may contain fossils of diverse non-marine trace, *Glossopteris* flora, mesosaurid reptiles, palaeoniscid fish, marine invertebrates, insects, and crustaceans (Johnson 2009). *Glossopteris* trees rapidly colonised the large deltas along the northern margin of the Karoo Sea. Dead vegetation accumulated faster than it could decay, and thick accumulations of peat formed, which were ultimately converted to coal. It is only in the northern part of the Karoo Basin that the glossopterids and cordaitales, ferns, clubmosses and horsetails thrived (McCarthy and Rubidge 2005).

The *Glossopteris* flora is thought to have been the major contributor to the coal beds of the Ecca. These are found in Karoo-age rocks across Africa, South America, Antarctica, Australia and India. This was one of the early clues to the theory of a former unified Gondwana landmass (Norman and Whitfield 2006).



Figure 18: Photograph of fossil horsetail fern stem, courtesy of Prof. Bamford, The Evolutionary Studies Institute (Photograph: H. Fourie).

Impact	High
Vryheid Formation	Very High Palaeontological Sensitivity
Pre-mining	Impact low.
Mining phase	Impact high.
Post-mining	Impact low after mitigation.

Table 1: Impact.

Subgroup / Supergroup	Group	Formation	Fossil Heritage	Comment
Karoo Supergroup	Ecca	Vryheid	Rich fossil plant assemblages of the Permian Glossopteris flora, rare fossil wood, diverse palynomorphs. Abundant low diversity trace fossils, rare insects, possible conchostracans, non-marine bivalves, fish scales	Globally important and under collected

Table 2: Taken from palaeotechnical report (Groenewald and Groenewald 2014).

Fossils in South Africa mainly occur in rocks of sedimentary nature and not in rocks from igneous or metamorphic nature. Therefore, if there is the presence of Karoo Supergroup strata the palaeontological sensitivity is generally LOW to VERY HIGH, but here locally **VERY HIGH** for the Vryheid Formation.

Rock Unit	Significance/vulnerability	Recommended Action
Vryheid Formation (Pv) (Pe)	Very High	Field assessment and protocol for finds is required

Table 3: Criteria used (Fossil Heritage Layer Browser/SAHRA).

Databases and collections: Ditsong: National Museum of Natural History. Evolutionary Studies Institute, University of the Witwatersrand (ESI).

Impact: **VERY HIGH** for the Vryheid Formation. There are significant fossil resources that may be impacted by the development (shale).

H. Description of the Methodology

The palaeontological impact assessment field study was undertaken towards the middle of October 2016. The walk through of the affected portion was done and photographs (in 7.1 mega pixels) were taken of the site with a digital Canon camera (PowerShot A470). It was not necessary to use a Global Positioning System (GPS) (Garmin eTrex 10) to record outcrops where not covered with topsoil, subsoil, overburden, and vegetation. The walk through did identify the Vryheid Formation. A literature survey is included.

Assumptions and Limitations:-

The accuracy and reliability of the report may be limited by the following constraints:

1. Most development areas have never been surveyed by a palaeontologist or geophysicist.
2. Variable accuracy of geological maps and associated information.
3. Poor locality information on sheet explanations for geological maps.
4. Lack of published data.
5. Lack of rocky outcrops.
6. Insufficient data from developer and exact lay-out plan for all structures.

Other Palaeontological Impact Assessment Reports for mining developments:-

Fourie, H. 4/2014. Greenside Colliery New Discard Facility. Phase 1 prepared for Shangoni Management Services.

Fourie, H 11/2015. Landau Colliery: Proposed Navigation West-South Block Extension Project. Phase 1 prepared for Shangoni Management Services.

A Phase 1 Palaeontological Impact Assessment: Field Study will include:

1. Recommendations for the future of the site.
2. Background information on the project.
3. Description of the property of affected environment with details of the study area.
4. Description of the geological setting and field observations.
5. Background to palaeontology of the area.
6. Heritage rating.
7. Stating of significance (Heritage Value).

A Phase 2 Palaeontological Impact Assessment: Mitigation will include:

1. Recommendations for the future of the site.
2. Description of work done (including number of people and their responsibilities).
3. A written assessment of the work done, fossils excavated, not removed or collected and observed.
4. Conclusion reached regarding the fossil material.
5. A detailed site plan.
6. Possible declaration as a heritage site or Site Management Plan.

The National Heritage Resources Act No. 25 of 1999 further prescribes.

Act No. 25 of 1999. National Heritage Resources Act, 1999.

The National Estate as: 3 (2) (f) archaeological and palaeontological sites, (i)(1) objects recovered from the soil or waters of South Africa, including archaeological and palaeontological objects and material, meteorites and rare geological specimens,

Heritage assessment criteria and grading used: (a) Grade 1: Heritage resources with qualities so exceptional that they are of special national significance;

(b) Grade 11: Heritage resources which, although forming part of the national estate, can be considered to have special qualities which make them significant within the context of a province or a region; and
(c) Grade 111: Other heritage resources worthy of conservation.

SAHRA is responsible for the identification and management of Grade 1 heritage resources.

Provincial Heritage Resources Authority (PHRA) identifies and manages Grade 11 heritage resources.

Local authorities identify and manage Grade 111 heritage resources.

No person may damage, deface, excavate, alter, remove from its original position, subdivide or change the planning status of a provincially protected place or object without a permit issued by a heritage resources authority or local authority responsible for the provincial protection.

Archaeology, palaeontology and meteorites: Section 35.

(2) Subject to the provisions of subsection (8) (a), all archaeological objects, palaeontological material and meteorites are the property of the State.

(3) Any person who discovers archaeological or palaeontological objects or material or a meteorite in the course of development or agricultural activity must immediately report the find to the responsible heritage resources authority, or to the nearest local authority offices or museum, which must immediately notify such heritage resources authority.

Mitigation involves planning the protection of significant fossil sites, rock units or other palaeontological resources and/or excavation, recording and sampling of fossil heritage that might be lost during development, together with pertinent geological data. The mitigation may take place before and / or during the construction phase of development. The specialist will require a Phase 2 mitigation permit from the relevant Heritage Resources Authority before a Phase 2 may be implemented.

The Mitigation is done in order to rescue representative fossil material from the study area to allow and record the nature of each locality and establish its age before it is destroyed and to make samples accessible for future research. It also interprets the evidence recovered to allow for education of the public and promotion of palaeontological heritage.

Should further fossil material be discovered during the course of the development (*e. g.* during bedrock excavations), this must be safeguarded, where feasible *in situ*, and reported to a palaeontologist or to the Heritage Resources authority. In situations where the area is considered palaeontologically sensitive (*e. g.* Karoo Supergroup Formations, ancient marine deposits in the interior or along the coast) the palaeontologist might need to monitor all newly excavated bedrock. The developer needs to give the palaeontologist sufficient time to assess and document the finds and, if necessary, to rescue a representative sample.

When a Phase 2 palaeontological impact study is recommended, permission for the development to proceed can be given only once the heritage resources authority has received and approved a Phase 2 report and is satisfied that (a) the palaeontological resources under threat have been adequately recorded and sampled, and (b) adequate development on fossil heritage, including, where necessary, *in situ* conservation of heritage of high significance. Careful planning, including early consultation with a palaeontologist and heritage management authorities, can minimise the impact of palaeontological surveys on development projects by selecting options that cause the least amount of inconvenience and delay.

Three types of permits are available; Mitigation, Destruction and Interpretation. The specialist will apply for the permit at the beginning of the process (SAHRA 2012).

I. Description of significant fossil occurrences

All Karoo Supergroup geological formations are ranked as LOW to VERY HIGH, and here the impact is potentially **VERY HIGH** for the Vryheid Formation, Ecca Group. Rocks of Permian age in South Africa are particularly rich in fossil plants (Rayner and Coventry 1985). The fossils are present in the grey shale interlayered with the coal seams. The fossils are not very rare and also occur in other parts of the Karoo stratigraphy. The pollen of the Greenside Colliery also on the Vryheid formation was the focus of a Ph.D study. It is often difficult to spot the greyish fossils as they are the same colour as the grey shale in which they are present as these coalified compressions have been weathered to leave surface replicas on the enclosing shale matrix. A locality close to Ermelo, also Vryheid Formation, has yielded *Scutum*, *Glossopteris* leaves, *Neoggerathiopsis* leaves, the lycopod *Cyclodendron leslii*, and various seeds and scale leaves (Prevec 2011).

Fossils likely to be found are mostly plants (Appendix 1) such as '*Glossopteris flora*' of the Vryheid Formation. The aquatic reptile *Mesosaurus* and fossil fish may also occur with marine invertebrates, arthropods and insects. Trace fossils can also be present. The marine bivalve *Megadesmus* is found in the upper part of the Volksrust Formation near Newcastle (Johnson 2009).

During storms a great variety of leaves, fructifications and twigs accumulated and because they were sandwiched between thin films of mud, they were preserved to bear record of the wealth and the density of the vegetation around the pools. They make it possible to reconstruct the plant life in these areas and wherever they are found, they constitute most valuable palaeobotanical records (Plumstead 1963) and can be used in palaeoenvironmental reconstructions.

Details of the location and distribution of all significant fossil sites or key fossiliferous rock units are often difficult to be determined due to thick topsoil, subsoil, overburden and alluvium. Depth of the overburden may vary a lot. The vast coal mining industry provides palaeontologists with fantastic access to coal-associated plant fossils, while simultaneously resulting in the destruction of important National palaeontological heritage.

The threats are:- earth moving equipment/machinery (for example haul trucks, front end loaders, excavators, graders, dozers) during construction, the sealing-in or destruction of fossils by development, vehicle traffic, and human disturbance. See Description of the Geological Setting (F) above.

J. Recommendation

- a. There is no objection (see Recommendation B) to the development, but it was necessary to request a Phase 1 Palaeontological Impact Assessment: Field study to determine whether the development will affect fossiliferous outcrops as the palaeontological sensitivity is **VERY HIGH**. A Phase 2 Palaeontological Mitigation may be required as the Phase 1 Palaeontological Assessment identified a fossiliferous formation (Vryheid Formation). Protocol is attached (Appendix 2).
- b. This project will benefit the economy and social development of the community.
- c. Preferred choice: Option 1. The impact on the palaeontological heritage is **VERY HIGH for the Vryheid Formation**. The presence of shale is problematic. Care must be taken during the digging of foundations and removing topsoil, subsoil and overburden (see Executive Summary).
- d. The following should be conserved: if any palaeontological material is exposed during digging, excavating, drilling or blasting SAHRA must be notified. All construction activities must be stopped and a palaeontologist should be called in to determine proper mitigation measures.

Sampling and collecting:

Wherefore a permit is needed from the South African Heritage Resources Agency (SAHRA / PHRA).

- a. Objections: Cautious. See heritage value and recommendation.
- b. Conditions of development: See Recommendation.
- c. Areas that may need a permit: **Yes** for the shale layer.
- d. Permits for mitigation: **Needed from SAHRA/PHRA prior to Mitigation.**

K. Conclusions

- a. All the land involved in the development was assessed and none of the property is unsuitable for development (see Recommendation B).
- b. All information needed for the Phase 1 Palaeontological Impact Assessment and Field scope was provided by the Consultant. All technical information was provided by WSP Environmental (Pty) Ltd.
- c. Areas that would involve mitigation and may need a permit from the South African Heritage Resources Agency are discussed.
- d. The following should be conserved: if any palaeontological material is exposed during digging, excavating, drilling or blasting, SAHRA must be notified. All development activities must be stopped and a palaeontologist should be called in to determine proper mitigation measures, especially for shallow caves.
- e. Condition in which development may proceed: It is further suggested that a Section 37(2) agreement of the Occupational, Health and Safety Act 85 of 1993 is signed with the relevant contractors to protect the environment and adjacent areas as well as for safety and security reasons.

L. Bibliography

- ALMOND, J., PETHER, J, and GROENEWALD, G. 2013. South African National Fossil Sensitivity Map. SAHRA and Council for Geosciences.
- GRODNER, M. and CAIRNCROSS, B. 2003. A regional scale 3-D model of the Witbank Coalfield, Northern Karoo Basin, South Africa. *South African Journal of Geology*, **106(4)**: 249-264.
- GROENEWALD, G and GROENEWALD, D. 2014. SAHRA Palaeotechnical Report. Palaeontological Heritage of Mpumalanga, Pp 23.
- KENT, L. E., 1980. Part 1: Lithostratigraphy of the Republic of South Africa, South West Africa/Namibia and the Republics of Bophuthatswana, Transkei and Venda. SACS, Council for Geosciences, *Stratigraphy of South Africa. 1980. South African Committee for Stratigraphy. Handbook 8, Part 1*, pp 690.
- JOHNSON, M.R. 2009. Ecca Group. Karoo Supergroup. Catalogue of South African Lithostratigraphic Units. SACS, **10**: 5-7.
- MCCARTHY, T and RUBIDGE, B. 2005. *The Story of Earth Life: A southern African perspective on a 4.6-billion-year journey*. Struik. Pp 333.
- NORMAN, N. and WHITFIELD, G., 2006. *Geological Journeys*. De Beers, Struik, P 1-320.
- PLUMSTEAD, E.P. 1963. The influence of plants and environment on the developing animal life of Karoo times. *South African Journal of Science*, **59(5)**: 147-152.
- PREVEC, R. 2011. A structural re-interpretation and revision of the type material of the glossopterid ovuliferous fructification *Scutum* from South Africa. *Palaeontologia africana*, **46**: 1-19.
- RAYNER, R.J. and COVENTRY, M.K. 1985. A *Glossopteris* flora from the Permian of South Africa. *South African Journal of Science*, **81**: 21-32.
- RUBIDGE, B. S. (ed.), 1995. Biostratigraphy of the Beaufort Group (Karoo Supergroup). South African Committee for Biostratigraphy, Biostratigraphic Series No. 1, 46pp. Council for Geoscience, Pretoria.
- SG 2.2 SAHRA APMHOB Guidelines, 2012. Minimum standards for palaeontological components of Heritage Impact Assessment Reports, Pp 1-15.

SNYMAN, C. P., 1996. *Geologie vir Suid-Afrika*. Departement Geologie, Universiteit van Pretoria, Pretoria, Volume 1, Pp. 513.

VAN DER WALT, M., DAY, M., RUBIDGE, B. S., COOPER, A. K. & NETTERBERG, I., 2010. Utilising GIS technology to create a biozone map for the Beaufort Group (Karoo Supergroup) of South Africa. *Palaeontologia Africana*, **45**: 1-5.

VISSER, D.J.L. 1984 (ed). Geological Map of South Africa 1:100 000. South African Committee for Stratigraphy. Council for Geoscience, Pretoria.

VISSER, D.J.L. 1989 (ed). *Toeligting: Geologiese kaart (1:100 000)*. Die Geologie van die Republiek van Suid Afrika, Transkei, Bophuthatswana, Venda, Ciskei en die Koningkryke van Lesotho en Swaziland. South African Committee for Stratigraphy. Council for Geoscience, Pretoria.

WALRAVEN, F. 1978. Geological Map of Pretoria 1:250 000 (2528). South African Committee for Stratigraphy. Council for Geoscience, Pretoria.

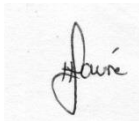
Declaration (disclaimer)

I, Heidi Fourie, declare that I am an independent consultant and have no business, financial, personal or other interest in the proposed development project for which I was appointed to do a palaeontological assessment. There are no circumstances that compromise the objectivity of me performing such work.

I accept no liability, and the client, by receiving this document, indemnifies me against all actions, claims, demands, losses, liabilities, costs, damages and expenses arising from or in connection with services rendered, directly or indirectly by the use of the information contained in this document.

It may be possible that the Phase 1 PIA study may have missed palaeontological resources in the project area as outcrops are not always present or visible due to vegetation while others may lie below the overburden of earth and may only be present once development commences.

This report may not be altered in any way and any parts drawn from this report must make reference to this report.



Heidi Fourie
2016/10/28

Appendix 1:

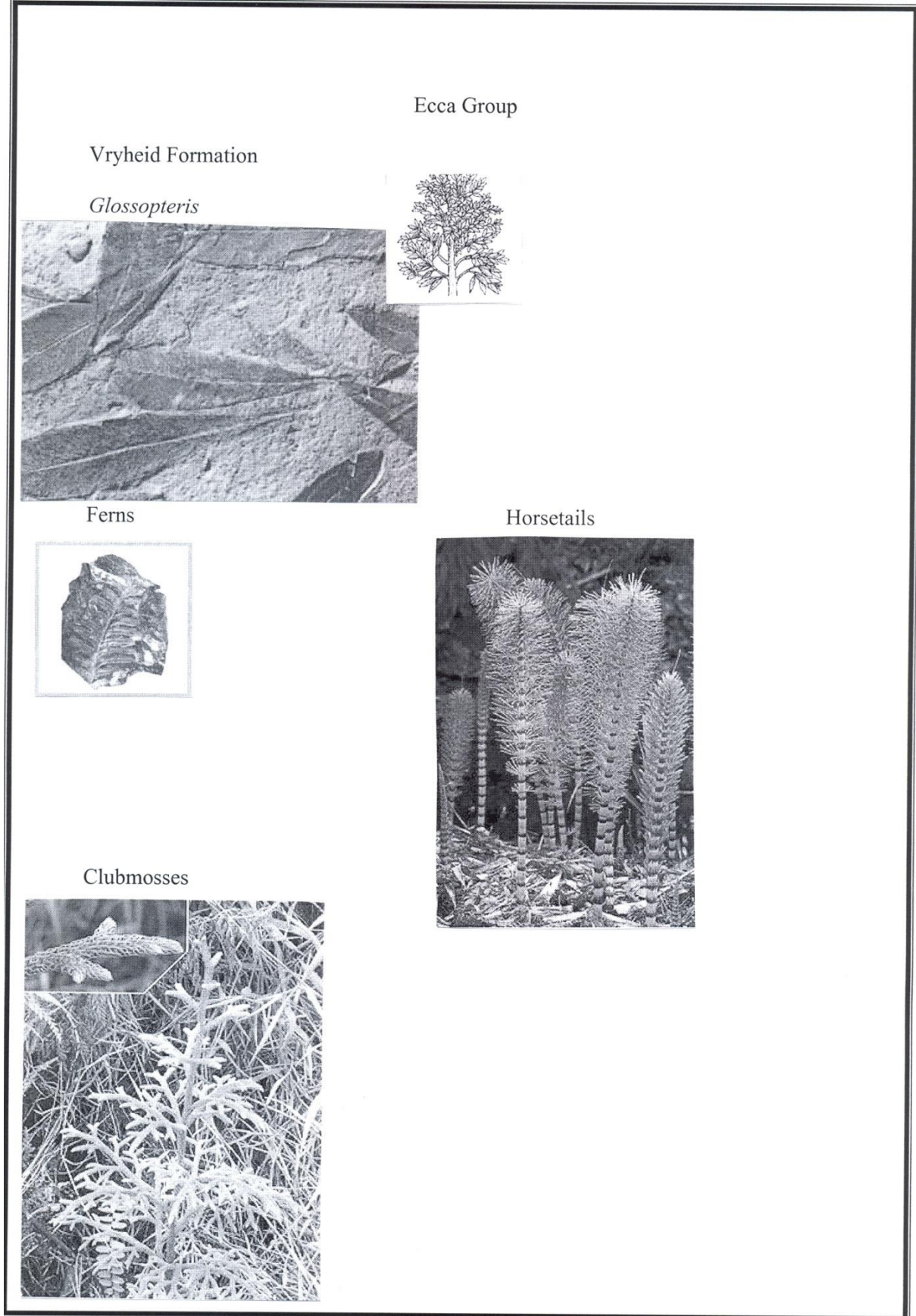


Figure 19: Examples of Vryheid Formation fossils.



Figure 20: Example of a plant fossil (courtesy of the ESI). *Glossopteris* leaf.

Appendix 2: Protocol for finds and Management plan

This section covers the recommended protocol for a Phase 2 Mitigation process as well as for reports where the Palaeontological Sensitivity is LOW; this process guides the palaeontologist / palaeobotanist on site and should not be attempted by the layman / developer.

The developer must survey the areas affected by the development and indicate on plan where the construction / development / mining will take place. Trenches have to be dug to ascertain how deep the sediments are above the bedrock (can be a few hundred metres). This will give an indication of the depth of the topsoil, subsoil, and overburden, if need be trenches should be dug deeper to expose the interburden.

Mitigation will involve recording, rescue and judicious sampling of the fossil material present in the layers sandwiched between the geological / coal layers. It must include information on number of taxa, fossil abundance, preservational style, and taphonomy. This can only be done during mining or excavations. In order for this to happen, in case of coal mining operations, the process will have to be closely scrutinised by a professional palaeontologist / palaeobotanist to ensure that only the coal layers are mined and the interlayers (siltstone and mudstone) are surveyed for fossils or representative sampling of fossils are taking place.

The palaeontological impact assessment process presents an opportunity for identification, access and possibly salvage of fossils and add to the few good plant localities. Mitigation can provide valuable onsite research that can benefit both the community and the palaeontological fraternity.

A Phase 2 study is very often the last opportunity we will ever have to record the fossil heritage within the development area. Fossils excavated will be stored at a National Repository.

A Phase 2 Palaeontological Impact Assessment: Mitigation will include (SAHRA) -

1. Recommendations for the future of the site.
2. Description and purpose of work done (including number of people and their responsibilities).
3. A written assessment of the work done, fossils excavated, not removed or collected and observed.
4. Conclusion reached regarding the fossil material.
5. A detailed site plan and map.
6. Possible declaration as a heritage site or Site Management Plan.
7. Stakeholders.
8. Detailed report including the Desktop and Phase 1 study information.
9. Annual interim or progress Phase 2 permit reports as well as the final report.
10. Methodology used.

Mitigation involves planning the protection of significant fossil sites, rock units or other palaeontological resources and/or excavation, recording and sampling of fossil heritage that might be lost during development, together with pertinent geological data. The mitigation may take place before and / or during the construction phase of development. The specialist will require a Phase 2 mitigation permit from the relevant Heritage Resources Authority before a Phase 2 may be implemented.

The Mitigation is done in order to rescue representative fossil material from the study area to allow and record the nature of each locality and establish its age before it is destroyed and to make samples accessible for future research. It also interprets the evidence recovered to allow for education of the public and promotion of palaeontological heritage.

Should further fossil material be discovered during the course of the development (e. g. during bedrock excavations), this must be safeguarded, where feasible *in situ*, and reported to a palaeontologist or to the Heritage Resources authority. In situations where the area is considered palaeontologically sensitive (e. g. Karoo Supergroup Formations, ancient marine deposits in the interior or along the coast) the palaeontologist might need to monitor all newly excavated bedrock. The developer needs to give the palaeontologist sufficient time to assess and document the finds and, if necessary, to rescue a representative sample.

When a Phase 2 palaeontological impact study is recommended, permission for the development to proceed can be given only once the heritage resources authority has received and approved a Phase 2 report and is satisfied that (a) the palaeontological resources under threat have been adequately recorded and sampled, and (b) adequate development on fossil heritage, including, where necessary, *in situ* conservation of heritage of high significance. Careful planning, including early consultation with a palaeontologist and heritage management authorities, can minimise the impact of palaeontological surveys on development projects by selecting options that cause the least amount of inconvenience and delay.

Three types of permits are available; Mitigation, Destruction and Interpretation. The specialist will apply for the permit at the beginning of the process (SAHRA 2012).

The Palaeontological Society of South Africa (PSSA) does not have guidelines on excavating or collecting, but the following is suggested:

1. The developer needs to clearly stake or peg-out (survey) the areas affected by the mining/ construction/ development operations and dig representative trenches and if possible supply geological borehole data.
2. Fossils likely to occur are for example the fossil plants from the Vryheid Formation, these are present in the grey shale (or any other fossiliferous layer ranked as VERY HIGH or HIGH) or invertebrates from the Volksrust Formation (or any other fossiliferous layer).

3. When clearing topsoil, subsoil or overburden and hard rock (outcrop) is found, the contractor needs to stop all work.
4. A Palaeobotanist / palaeontologist (contact SAHRIS for list) must then inspect the affected areas and trenches for fossiliferous outcrops / layers. The contractor / developer may be asked to move structures, and put the development on hold.
5. If the palaeontologist / palaeobotanist is satisfied that no fossils will be destroyed or have removed the fossils, development and removing of the topsoil can continue.
6. After this process the same palaeontologist / palaeobotanist will have to inspect and offer advice through the Phase 2 Mitigation Process. Bedrock excavations for footings may expose, damage or destroy previously buried fossil material and must be inspected.
7. When permission for the development is granted, the next layer can be removed, if this is part of a fossiliferous layer, then with the removal of each layer of sediment, the palaeontologist / palaeobotanist must do an investigation (a minimum of once a week).
8. At this stage the palaeontologist / palaeobotanist in consultation with the developer / mining company must ensure that a further working protocol and schedule is in place. Onsite training should take place, followed by an annual visit by the palaeontologist / palaeobotanist.

Fossil excavation if necessary during Phase 2:

1. Photography of fossil / fossil layer and surrounding strata.
2. Once a fossil has been identified as such, the task of extraction begins.
3. It usually entails the taking of a GPS reading and recording lithostratigraphic, biostratigraphic, date, collector and locality information.
4. Using Paraloid (B-72) as an adhesive and protective glue, parts of the fossil can be kept together (not necessarily applicable to plant fossils).
5. Slowly chipping away of matrix surrounding the fossil using a geological pick, brushes and chisels.
6. Once the full extent of the fossil / fossils are visible, it can be covered with a plaster jacket (not necessarily applicable to plant fossils).
7. Chipping away sides to loosen underside.
8. Splitting of the rock containing palaeobotanical material should reveal any fossils sandwiched between the layers.

SAHRA has the following documents in place:

Guidelines to Palaeontological Permitting policy.

Minimum Standards: Palaeontological Component of Heritage Impact Assessment reports.

Guidelines for Field Reports.

Palaeotechnical Reports for all the Provinces.

Appendix 3:

Section	Point in Act	Heading
B	1(c)	Outline of development project
	1(d)	Summary of findings
	1(g)	Concerns/threats:
	1(n)i	"
	1(n)ii	"
	1(o)	"
	1(p)	"
D	1(h)	Figures
	1(a)i	Terms of reference

H	1(e)	Description of Methodology
	1(i)	Assumptions and Limitations
I	1(f)	Heritage value
J	1(j)	Recommendation
	1(l)	"
	1(m)	Sampling and collecting
	1(k)	"
Declaration	1(b)	Declaration
Appendix 2	1(k)	Protocol for finds
	1(m)	"
	1(q)	"

Table 4: Listing points in Appendix 6 of the Act and position in Report.