

22 April 2022

Savannah Environmental  
PO Box 148, Sunninghill,  
Gauteng, 2157

Attention: Jo-Anne Thomas

**RE: FRONTEER WIND FARM, BETWEEN MAKHANDA AND SOMERSET EAST, EASTERN CAPE**

Our reports reflected in the title below dated 21 June 2021, refers:

**Fronteer Wind Farm, Between Makhanda And Somerset East, Eastern Cape - Heritage Impact Assessment (HIA)**

PGS Heritage noted the proposed change of the original Fronteer WEF project by optimising the proposed layout in order to address outstanding concerns raised by I&APs (**Figure 1 - Figure 3**). The proposed changes are:

- An optimised layout with reduced numbers of turbines (from 38 to 19 turbines);
- The turbines proposed to be used, based on the best technology currently in the market, will also be slightly smaller having a hub height of 115m instead of the originally proposed 120m. The rotor diameter will remain at 150m.

The proposed optimised layout has been considered.

1. From an archaeological, burial grounds and graves and historical structure perspective, the optimised layout of the infrastructure, turbine location and grid connections will result in a slightly lower impact on the identified sites in the HIA (**Figure 4**). As such this will result in no change in the assessment and recommended mitigation measures related to archaeological, burial grounds and graves and historical structure as described in the HIA report.
2. The cultural landscape impact will be addressed by the cultural landscape specialist in a separate letter.
3. The layout changes took the recommendation of the June 2021 HIA into consideration and thus adhere to the pre-design recommendations.
4. We have no objection to the change in the optimised layout of the Fronteer WEF project.

Any queries can be referred to, Wouter Fourie, at [wouter@pgsheritage.com](mailto:wouter@pgsheritage.com)

Sincerely



Wouter Fourie  
Director (Professional Heritage Practitioner –  
APHP, Professional Archaeologist – ASAPA)  
PGS Heritage



Cherene de Bruyn  
Archaeologist (Professional Archaeologist –  
ASAPA)  
PGS Heritage

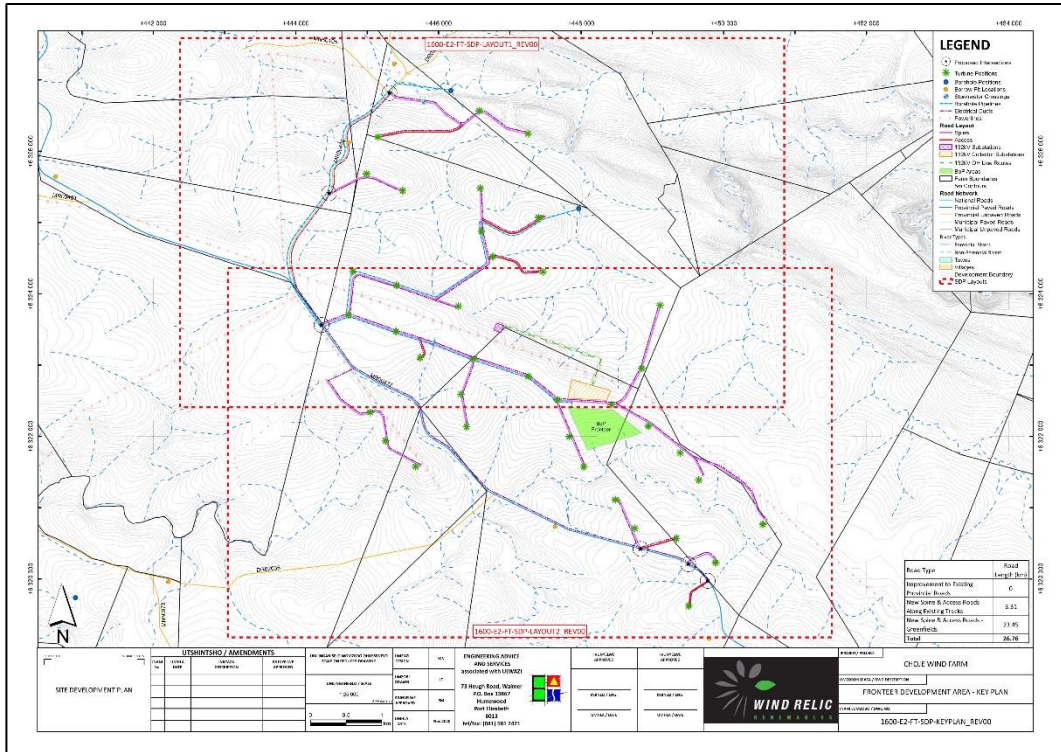


Figure 1 – The map indicating the Frontier Wind Farm Site Development Plan, as assessed in the HIA (Provided by WindRelic)

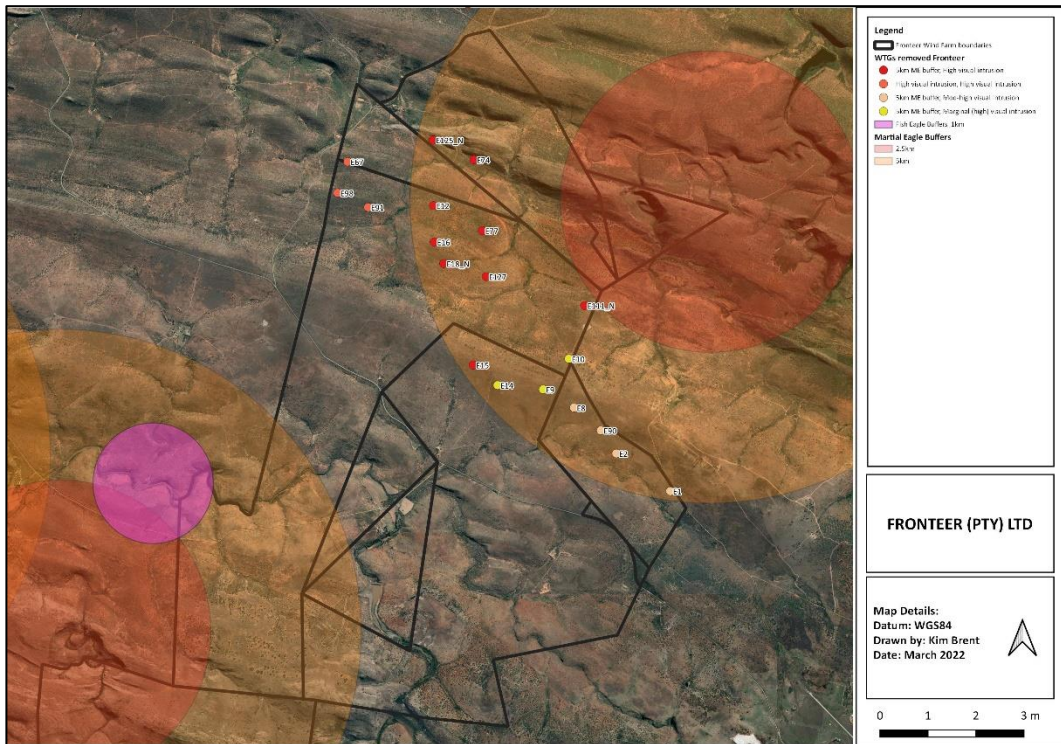


Figure 2 - Map indicating the turbines that have been removed. (Provided by Savannah Environmental).

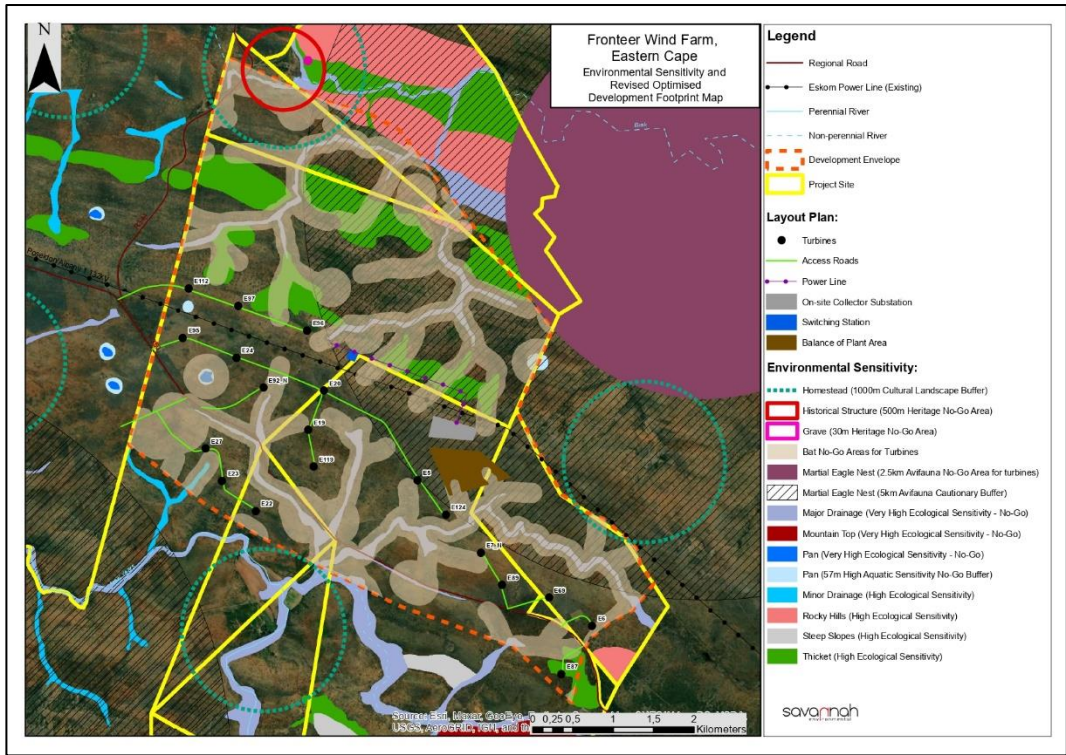


Figure 3 - Optimed layout of the Frontier WEF. (Provided by Savannah Environmental).

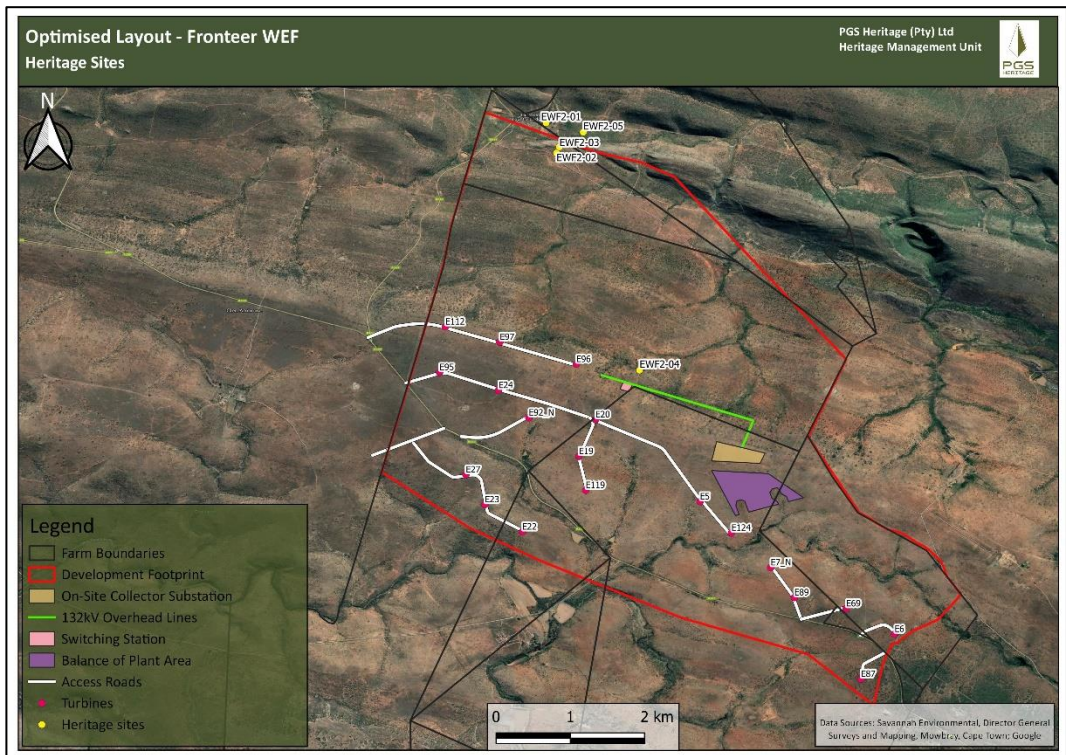


Figure 4 - Location of the heritage sites with the proposed optimised layout.