



**COBUS DREYER**

**Pr. Archaeologist/Heritage Specialist**

**P.O. Box 12910  
BRANDHOF 9324  
Bloemfontein  
dreyerj@telkomsa.net**

**Tel: 051-444 1187  
Fax: 051-444 4395  
Cell: 083 357 7982**

7 NOVEMBER 2012

**FIRST PHASE ARCHAEOLOGICAL AND HERITAGE  
ASSESSMENT OF THE PROPOSED NEW CEMETERY AT  
AUGRABIES, NORTHERN CAPE**

**EXECUTIVE SUMMARY**

A new cemetery is planned at Augrabies in the Northern Cape.

A former old vineyard will be exploited for the purpose.

No archaeological or historical material was found at the proposed site.

The developments will not require any mitigation measures and I recommend that the planning of the site may proceed.

**INTRODUCTION AND DESCRIPTION**

**Scope and Limitations**

The investigation provided an opportunity to examine the proposed new cemetery site.

No limitations or obstacles were experienced during site visit.

**Methodology**

Standard archaeological survey and recording methods were used.

1. The site was inspected on foot.
2. GPS point was taken and the surrounding area and features were recorded on camera.

## **INVESTIGATION**

The proposed new site was visited on 14 September 2012. Neil Devenish and Marguerite Cronjé from MDA Environmental Consultants, Bloemfontein, took me to the site. The Environmental Assessment is done on behalf of the !Kai Gariep Municipality. The new cemetery will cover about 14277m<sup>2</sup>.

The site was examined for any possible traces of cultural and historical remains to establish the potential impact of the developments on any archaeological and cultural historical material. The Heritage Impact Assessment (HIA) is done in terms of the National Heritage Resources Act (NHRA), (25 of 1999) and under the Environmental Conservation Act, (73 of 1989).

The report aims to locate and evaluate the significance of cultural heritage sites, archaeological material, manmade structures older than 60 years, and sites associated with oral histories and graves that might be affected by the proposed developments.

I have done a various Environmental and Heritage Impact assessments in the Northern Cape and along the upper part of the West Coast and along the Orange River towards the Richtersveld, and I consider myself familiar with the archaeology and cultural heritage of the area and competent to do the investigation.

## **LOCALITY**

The proposed new cemetery (Maps 1&2) is planned on a piece of old vineyard adjacent to the existing graveyard (Fig.3) at Augrabies, Northern Cape (Map 3).

The soil surface had been severely disturbed by the removal of old vines and the levelling and preparation of the cemetery. The proposed site is surrounded by the township with the inevitable further impact on the environment. Outcrops of calcrete and quarts are visible on the surface.

The following GPS coordinate (Cape scale) was taken:

**AGA**            28°40'27"S 020°25'55"E    Altitude 646m            (Figs.1&2).

## **FINDS**

No archaeological material was found at the site, nor were there any engravings or other relics or historical material discovered at the site.

**ASSESSMENT OF IMPACT**

I am convinced that the proposed developments will have no impact on any cultural and historical heritage remains of the area.

**RECOMMENDATIONS**

I recommend that the planning of the proposed cemetery may proceed.

**MITIGATION**

No mitigation measures will be required.

**ACKNOWLEDGEMENTS**

I thank Neil Devenish and Marguerite Cronjé from MDA Environmental Consultants, Bloemfontein, for taking me to the site.

**SELECT BIBLIOGRAPHY:**

BEAUMONT, P.B. & VOGEL, J.C. 1989. Patterns in the age and context of rock art in the Northern Cape. *South African Archaeological Bulletin* 44(150):73-81.

BEAUMONT, P.B., SMITH, A.B. & VOGEL, J.C. 1995. Before the Einiqua: the archaeology of the frontier zone. In Smith, A.B. (Ed.). *Einiqualand: Studies of the Orange River Frontier*. Cape Town: University of Cape Town Press.

DEACON, J. 1992. *Archaeology for Planners, Developers and Local Authorities*. Cape Town: National Monuments Council.

DEACON, H. J. & DEACON, J. 1999. *Human Beginnings in South Africa – Uncovering the secrets of the Stone Age*. Cape town: David Phillip.

DREYER, J. 2002. Archaeological assessment of the proposed upgrading of the road (DR2955) between Springbok and Komaggas, Northern Cape. EIA Report for CEBO Environmental Consultants, Bloemfontein.

DREYER, J. 2003. First phase heritage / archaeological assessment of the NEC Klipkop-Wessels feeder project at Askham, Northern Cape. EIA Report for ESKOM, Kimberley.

DREYER, J. 2005. Archaeological assessment of the proposed upgrading of the gravel road between Alexander Bay and Khusus, Richtersveld, Northern Cape. EIA Report for Cebo Environmental Consultants, Bloemfontein.

DREYER, J. 2006. First phase archaeological and cultural heritage assessment of the proposed concentrated solar thermal plant (CSP) at the farms Olyvenhouts Drift, Upington, Bokpoort 390 and Tampansrus 294/295, Groblershoop, Northern Cape. EIA Report for MDA Environmental Consultants, Bloemfontein.

DREYER, J. 2007. First phase archaeological and cultural heritage assessment of borrow pit R along the proposed R87 road between Rietfontein & Groot Mier, Gordonia district, Northern Cape

DREYER, J. 2008. First phase archaeological and cultural heritage assessment of the proposed water flow measuring weir site on the Orange River near Sendelingsdrif, Northern Cape. EIA Report for Enviroworks Environmental Consultants, Bloemfontein and the Department of Water Affairs, Kimberley.

DREYER, J. 2008. First phase archaeological and cultural heritage assessment of the proposed water flow measuring weir site in the Orange River at Blouputs, Northern Cape. EIA Report for Enviroworks Environmental Consultants, Bloemfontein.

DREYER, J. 2008. First phase archaeological and cultural heritage assessment of the proposed upgrading of the R358 road and borrow pit sites between Pofadder & Onseepkans, Northern Cape. EIA Report for Spatial Solutions Incorporated, Environmental Consultants, Bloemfontein.

DREYER, J. 2008. First phase archaeological and cultural heritage assessment of the proposed water flow measuring weir site on the Orange River near Sendelingsdrif, Northern Cape. EIA Report for Enviroworks Environmental Consultants, Bloemfontein.

DREYER, J. 2010. First phase archaeological and heritage assessment of the proposed water flow measuring weir site in the Orange River at Blouputs, Northern Cape. EIA Report for Enviroworks Environmental Consultants, Bloemfontein and the Department of Water Affairs, Kimberley.

DREYER, J. 2010. First phase archaeological & heritage assessment of the residential developments at Pabalello, Upington, Northern Cape. EIA Report for Stabilis Developments, Kimberley.

DREYER, J. 2010. First phase archaeological & heritage assessment of the proposed development of three borrow pit sites between Nababeep & Concordia, Northern Cape. EIA Report for Spatial Solutions Incorporated, Environmental Consultants, Bloemfontein.

DREYER, J. 2010. First phase archaeological and heritage assessment of the borrow pits for the proposed upgrading of the road from the Mission Gate to Riemvasmaak, Northern Cape. EIA Report for Spatial Solutions Incorporated, Environmental Consultants, Bloemfontein.

DREYER, J. 2011. First phase archaeological & heritage assessment of four bridges on the N14 road between Kakamas & Keimoes, Northern Cape. EIA Report for MDA Environmental Consultants, Bloemfontein.

DREYER, J. 2011. First phase archaeological & heritage assessment of the proposed diamond mining developments at Predikantvlei 190, near Kleinsee, Namaqualand district. EIA Report for Milnex Consultants, Schweizer-Reneke.

DREYER, J. 2011. First phase archaeological & heritage assessment of the proposed diamond mining developments at Brazil 329, Kleinsee, Namaqualand district. EIA Report for Geo-Rock International Consultants, Kimberley.

DREYER, J. 2011. Archaeological & heritage investigation of the proposed MTN cell phone mast at Breekkierie near Kenhardt, Northern Cape. EIA Report for Spatial Solutions Incorporated Environmental Consultants, Bloemfontein.

DREYER, J. 2012. First phase archaeological & heritage assessment of the proposed diamond mining developments at Portions 3 & 4 and the Remainder of Grootderm 10, near Alexander Bay, Namaqualand district. EIA Report for Rock Runner Environmental Consultants, Kimberley.

DREYER, J. 2012. First phase archaeological and heritage assessment of the solid waste disposal site at Curries Camp near Upington, Northern Cape. EIA Report for MDA Environmental Consultants, Bloemfontein.

DREYER, J. 2012. First phase archaeological and heritage assessment of the solid waste transfer station site at Augrabies, Northern Cape. EIA Report for MDA Environmental Consultants, Bloemfontein.

ERSMUS, P.A., SEREKOANE, M.J. & SAULS, G. 2003. Life Histories of the People of the Riemvasmaak Community in the Northern Cape. Department of Anthropology, University of the Free State, Bloemfontein. Report for The Sol Plaatje Educational Trust, 32 Angel Street, Kimberley, 8301, South Africa.

HUMPHREYS, A.J.B. 1986. Searching for the past. Cape Town: David Philip.

MORRIS, D. 1988. Engraved in place and time: a review of variability in the rock art of the Northern Cape and Karoo. South African Archaeological Bulletin 43(148):109-121.

MORRIS, D. 1990a. 'Etchings' and 'Intaglios' in the Upper Karoo: Part 1: The engravings at Springbok Oog. In Beaumont, P.B. & Morris, D. Guide to archaeological sites in the Northern Cape. Kimberley: McGregor Museum.

MORRIS, D. 1990b. 'Etchings' and 'Intaglios' in the Upper Karoo: Part 2: Engravings on Jagtpan and adjacent farms. In Beaumont, P.B. & Morris, D. Guide to archaeological sites in the Northern Cape. Kimberley: McGregor Museum.

PISTORIUS, J.C.C. 1994. Eskom Archaeological Site Identification Guide. Johannesburg: Eskom.

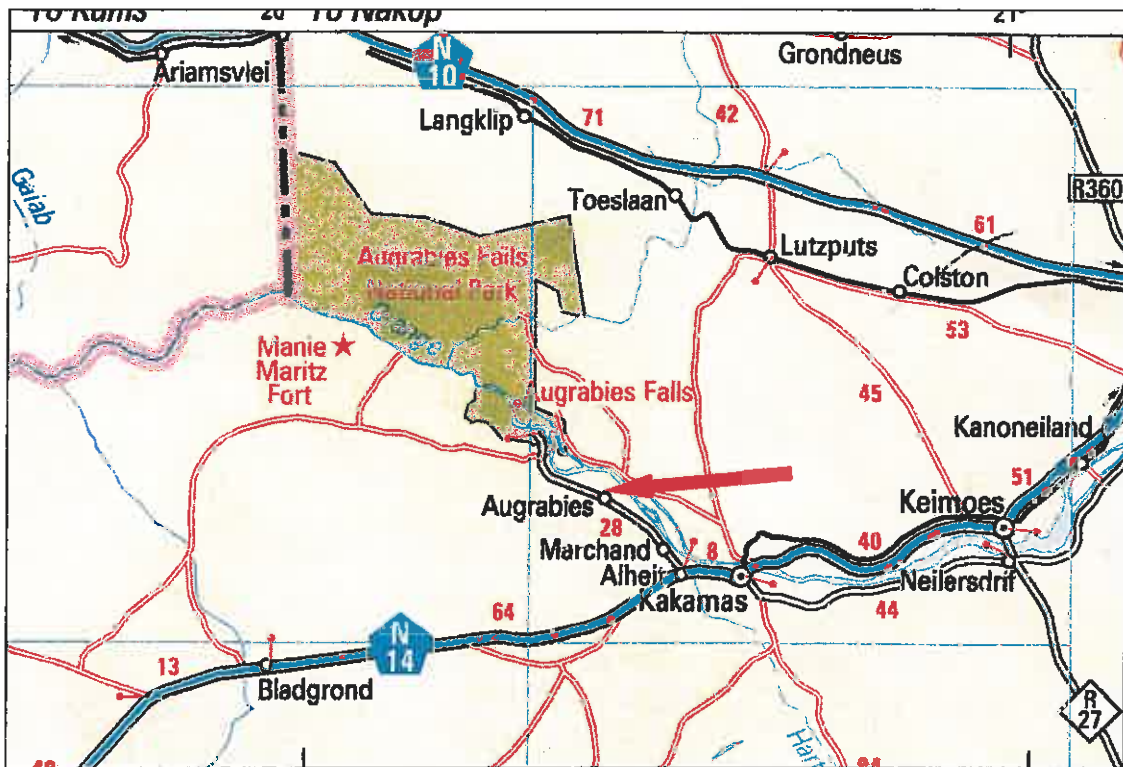
ROSENTHAL, E. (n.d.). The River of Diamonds. Cape Town: Howard Timmins.

SMITH, A.B. (Ed.). 1995. Einiqualand: Studies of the Orange River Frontier. Cape Town: UCT Press.

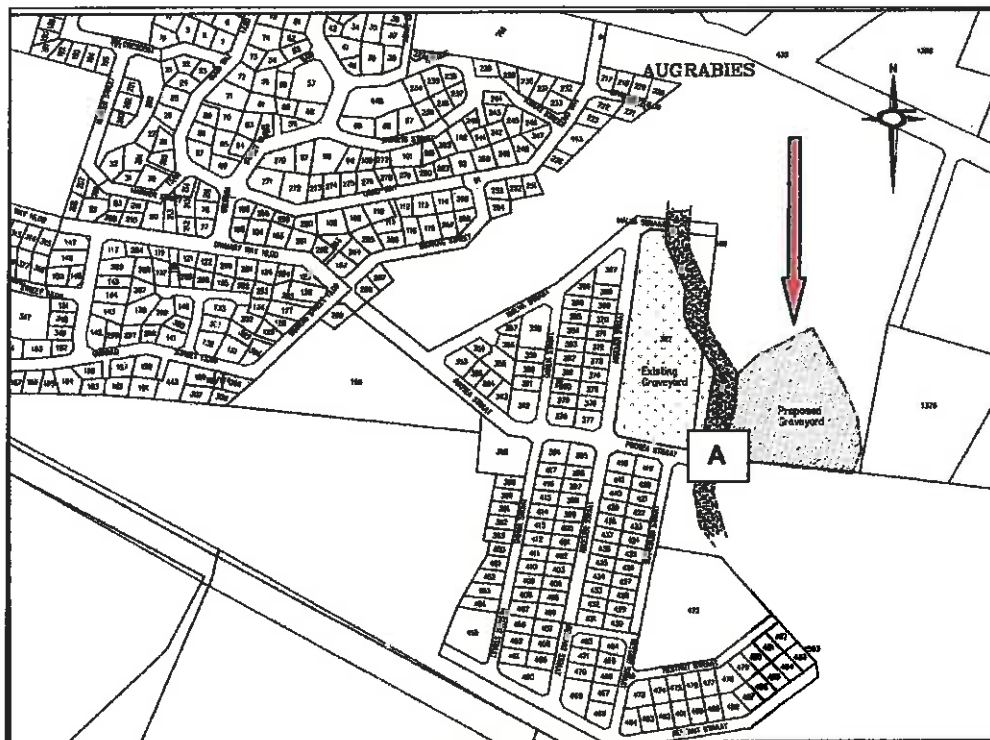
SOHNGE, P.G. VISSER, D.J.L. AND VAN RIET LOWE, C. 1937. The geology and archaeology of the Vaal River Basin. Pretoria: Government Printer.

WEBLEY, L. 2012. Desktop Heritage Impact Assessment: Proposed 1,5ha extension of gravel mine, Portion 2 of the farm Aroams 57, near Aggeneys, Northern Cape Province. HIA report for Greenmined Environmental, Somerset West.

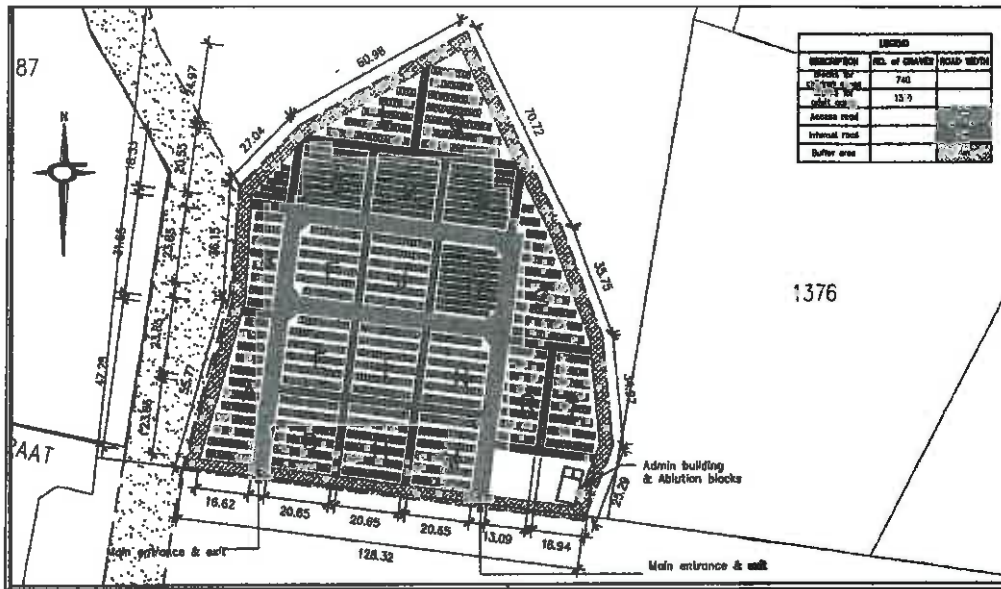
### LIST OF ILLUSTRATIONS



Map 1 Augrabies village between Kakamas and the Augrabies National Park, Northern Cape.



Map 2 Proposed position of the new cemetery at Augrabies. Coordinate Point A indicated.



Map 3 Layout of the new cemetery at Augrabies.



Fig.1 Point A at the new cemetery site, Augrabies, Northern Cape.





Fig.2 Point A at the new cemetery site, Augrabies, Northern Cape.



Map 3 Point A at the new cemetery site, Augrabies, Northern Cape.



Fig.3 Old cemetery near the new site at Augrabies, Northern Cape.