

**ARCHAEOLOGICAL SURVEY OF THE PROPOSED
SOMOPHO VODACOM TOWER, PONGOLA,
KWAZULU-NATAL**

FOR ENVIRONMENTAL PLANNING SERVICES

DATE: 31 July 2007

By Gavin Anderson

**Umlando: Archaeological Tourism and Resource
Management**

PO Box 102532, Meerensee, 3901

Phone/fax: 035-7531785 Fax: 0865445631

Cell: 0836585362



TABLE OF CONTENT

INTRODUCTION.....3
METHOD.....3
RESULTS & CONCLUSION.....6

TABLE OF FIGURES

FIG. 1: GENERAL LOCATION OF THE PROPOSED DEVELOPMENT.....4
FIG. 2: LOCATION OF THE STUDY AREA.....5

INTRODUCTION

Umlando cc was contracted by to undertake a heritage impact assessment of the proposed Somopho Vodacom Tower. The tower is located ~7km northwest of Empangeni on top of a hill.

The impacts on the area will be:

- Vodacom tower base
- Access roads
- Electrical cabling
- Related infrastructures

No heritage sites were located on the hill.

METHOD

The method for Heritage assessment consists of several steps.

The first step forms part of the desktop assessment. Here we would consult the databases from both Umlando and the Natal Museum. These databases contain most of the known heritage sites in KwaZulu-Natal. This database does; however, tend to be restricted to archaeological and palaeontological sites. Consulting with the relevant authorities will also cover known battlefields and historical sites. We also consult with an historical architect, palaeontologist, and an historian where necessary.

The initial archaeological survey (i.e. fieldwork) consists of a foot survey where the selected area was covered. The survey results will define the significance of each recorded site, as well as a management plan. The main problem with the survey was the poor archaeological visibility.

FIG. 1: GENERAL LOCATION OF THE PROPOSED DEVELOPMENT

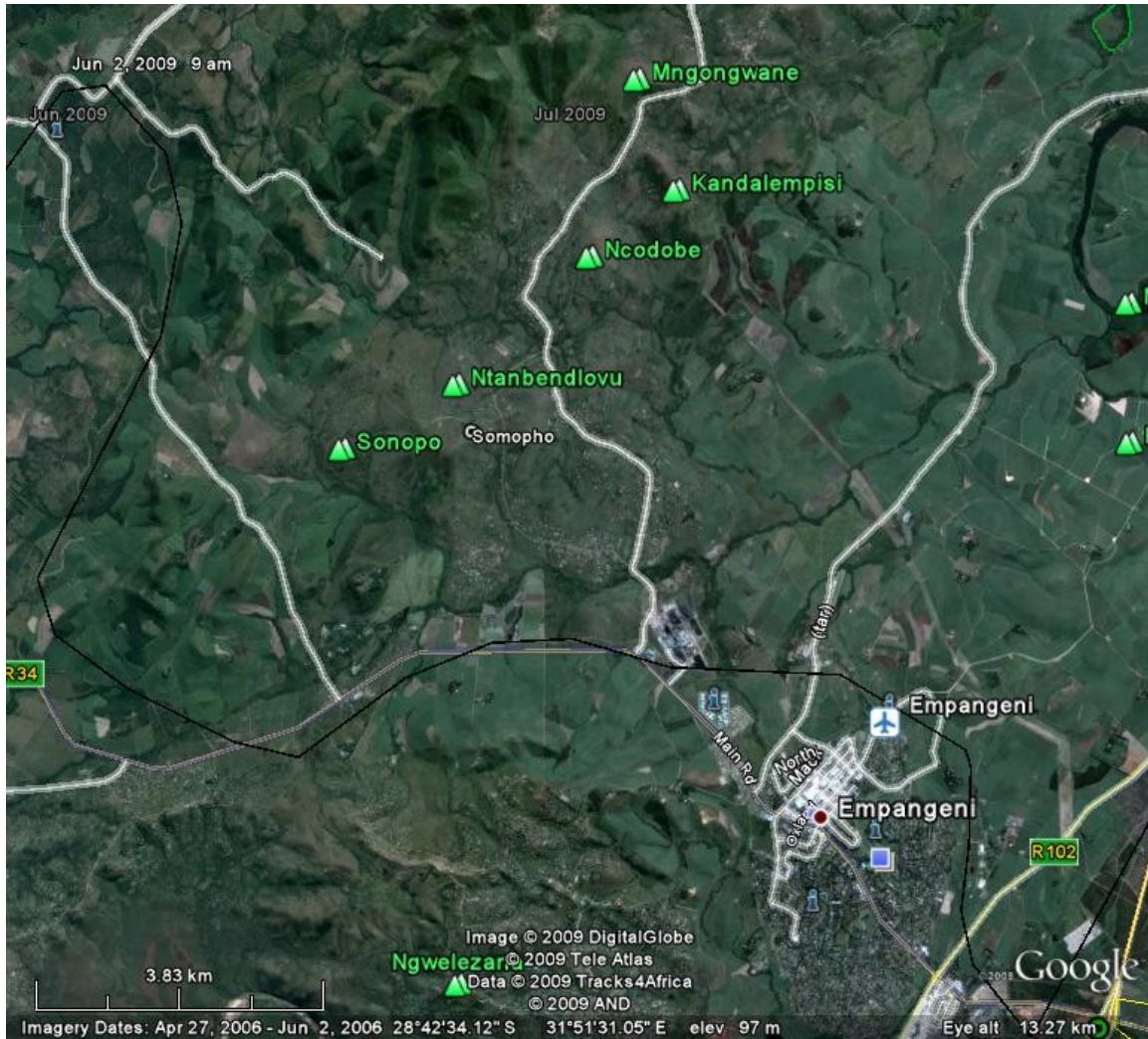
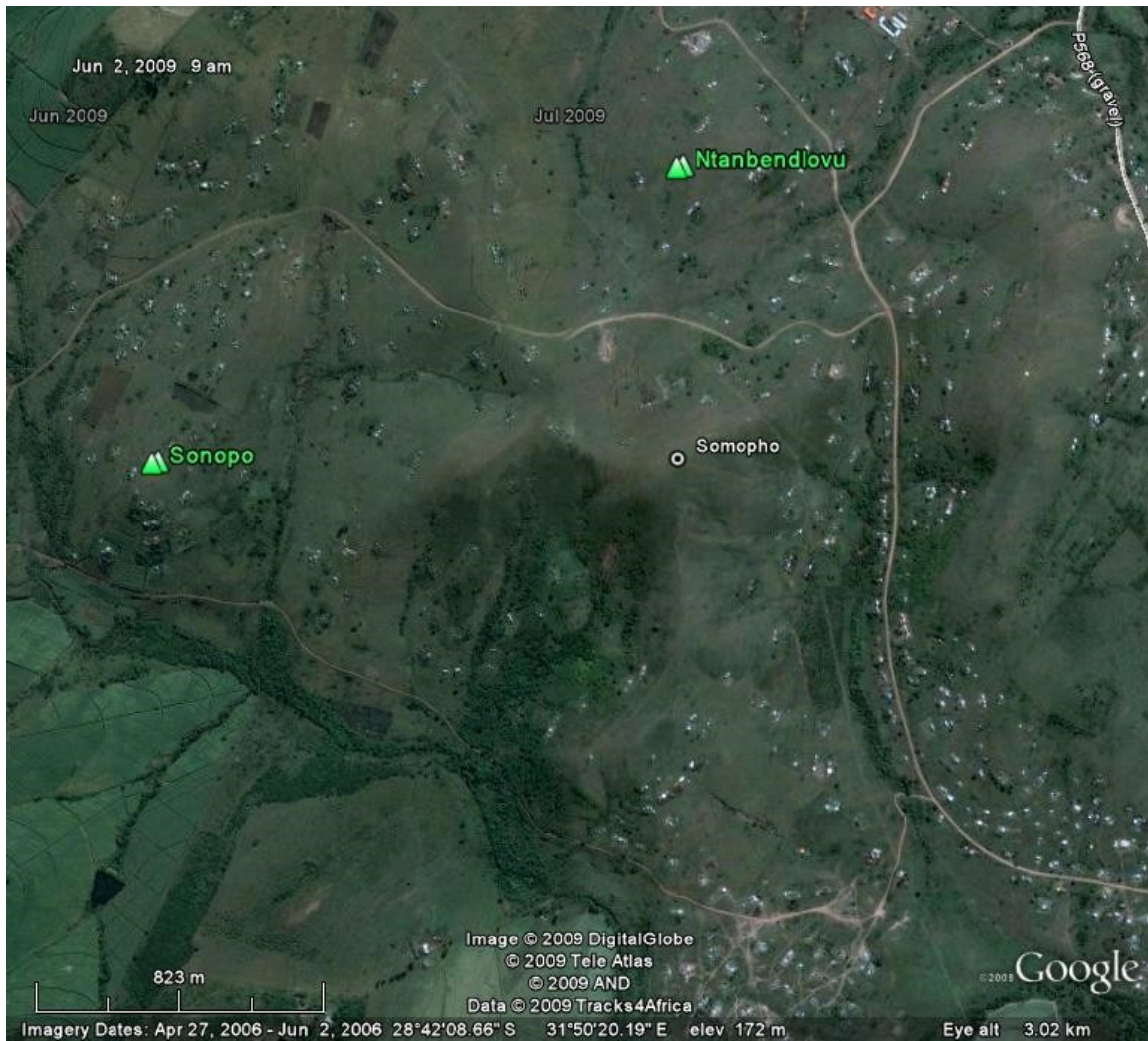


FIG. 2: LOCATION OF THE STUDY AREA



RESULTS & CONCLUSION

No heritage sites were located on the hill related to the Somopho Vodacom Tower. No further heritage mitigation is required.