

**PRELIMINARY HERITAGE ASSESSMENT FOR THE ST CHADS
SUBSIDISED HOUSING DEVELOPMENT**



TABLE OF CONTENTS

1	INTRODUCTION	1
1.1	PROJECT DESCRIPTION	1
1.2	LOCATION	1
2	CULTURAL HERITAGE.....	2
3	PALEONTOLOGY	4
4	CONCLUSION.....	6

1 INTRODUCTION

1.1 PROJECT DESCRIPTION

The proposed project is aimed at constructing and formalising residential units within existing household footprints together with the formalisation of supporting infrastructure such as internal roads and water supply pipelines within the Alfred Duma Local Municipality. The project area is characterised by medium-density residential settlements. The proposed development will entail the following:

- The development of approximately 946 Residential Units
- Formalisation of internal roads as well as stormwater infrastructure
- Pipelines for the transportation of water supply.

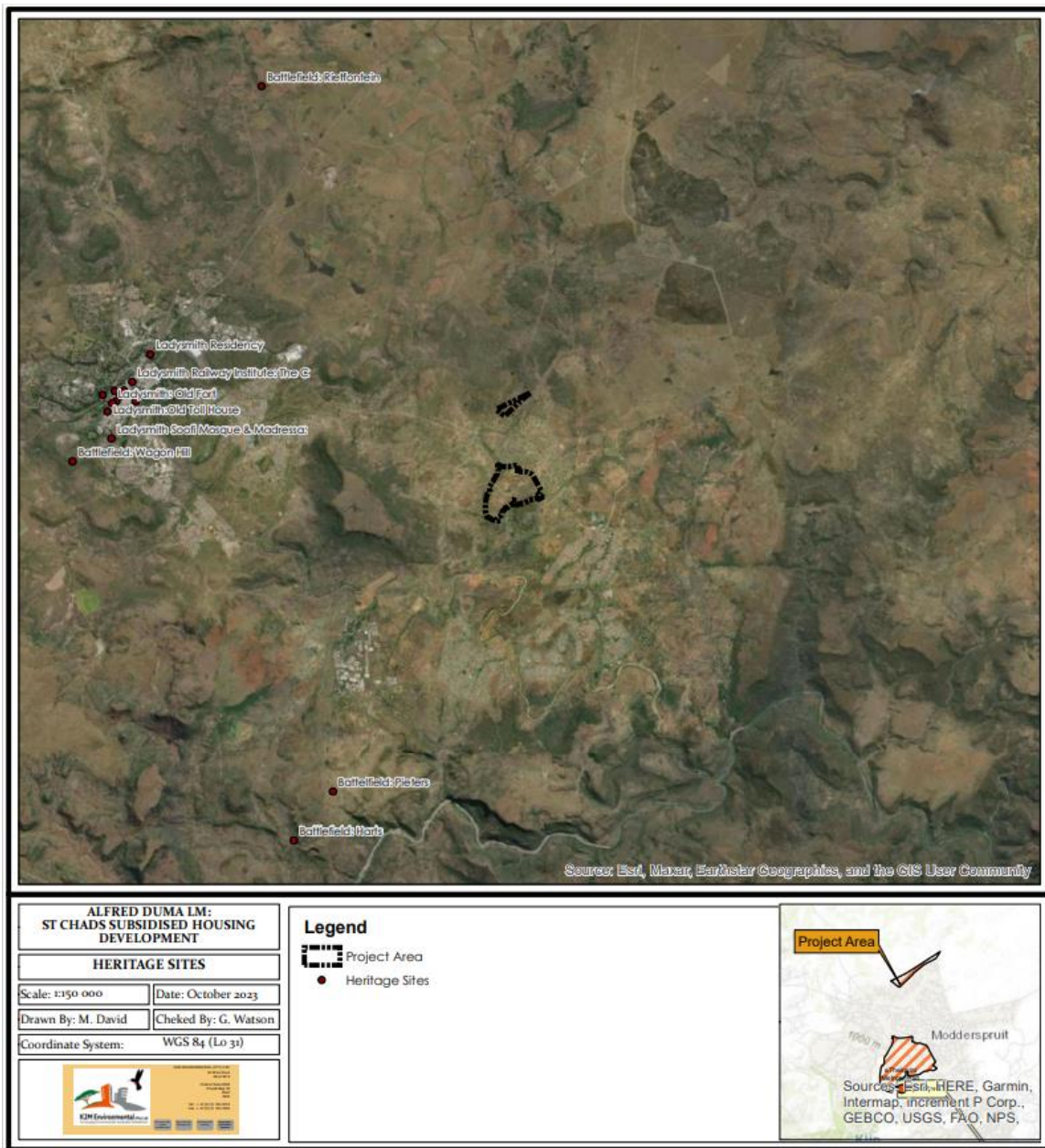
1.2 LOCATION

The proposed project is located in Ward 27 of the Alfred Duma Local Municipality and is located approximately 11.1 km east of Ladysmith. The property is described as RE 1185 of Modder Spruit.

2 CULTURAL HERITAGE

As indicated in Map 2.1 below, there are no heritage sites within the St Chads project area. The closest heritage site is the Pieters Battlefield Heritage Site, located approximately 10.2 km southwest of the project area.

Map 2.1: Heritage Sites



As depicted in Table 2.1 below, the Alfred Duma Local Municipality contains 22 Heritage Sites.

Table 2.1: Heritage Sites located within the Alfred Duma Municipality

SITE	PROTECTION	LATITUDE	LONGITUDE
Battlefield: Pieters	Not Proclaimed	-28.66676	29.84462
Battlefield: Elandslaagte	Provincial List	-28.42118	29.98039
Battlefield: Harts	Not Proclaimed	-28.67986	29.83251
Battlefield: Rietfontein	Not Proclaimed	-28.47578	29.82496
Battlefield: Spioenkop	Provincial List	-28.42270	29.97964
Battlefield: Vaalkrantz	Not Proclaimed	-28.67623	29.63151
Battlefield: Wagon Hill	Heritage Landmark	-28.57668	29.76591
Colenso: Bulwer Bridge	Provincial List	-28.73611	29.81944
Hime Bridge Platberg	Provincial List	-28.36088	30.01104
Hindu Thirukootam and Shree Ganase	Heritage Landmark	-28.56066	29.78532
Ladysmith Railway Institute	Provincial List	-28.55546	29.78440
Ladysmith Residency	Heritage Landmark	-28.54798	29.79007
Ladysmith: Soofi Mosque & Madressa	Heritage Landmark	-28.57062	29.77792
Ladysmith Town Hall	Provincial List	-28.55913	29.78068
Ladysmith: Castor & Pollux	Heritage Object	-28.55768	29.78192
Ladysmith: Dutch Reformed Church	Heritage Landmark	-28.56071	29.77948
Ladysmith: Gen George White Headquarters	Not Proclaimed	-28.55884	29.77537
Ladysmith: Old Fort	Not Proclaimed	-28.56105	29.77826
Ladysmith: Keer Weder	Heritage Landmark	-28.55793	29.77909
Ladysmith: Old Toll House	Not Proclaimed	-28.56343	29.77676
Military Cemetery: Elandslaagte	Not Proclaimed	-28.41179	29.95354
Military Cemetery: Elandslaagte 2	Provincial List	-28.42270	29.97964

3 PALEONTOLOGY

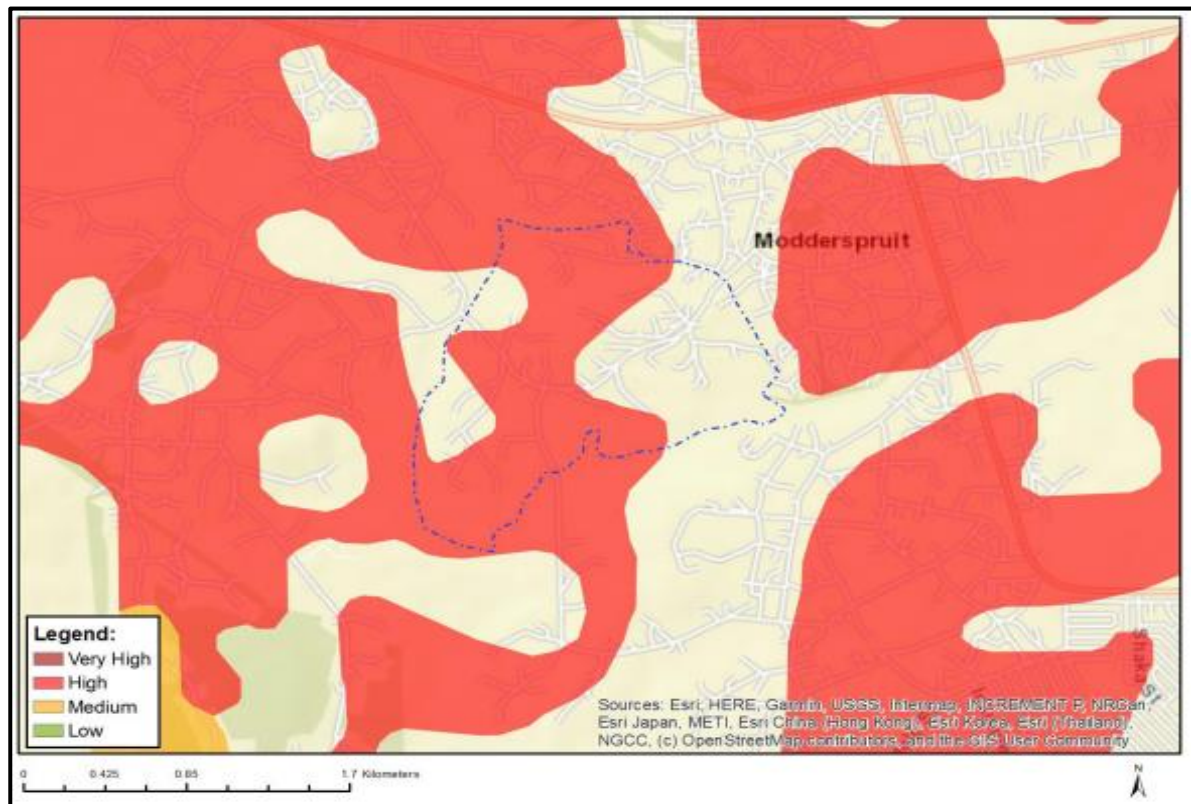
The impact of the proposed development on local fossil heritage is determined on the basis of the palaeontological sensitivity of the rock units concerned and the nature and scale of the proposed development, specifically with regards to the extent of fresh bedrock excavation. The corresponding colour notation for the various palaeontological sensitivity classes depicted in Table 3.1 below is adapted from the National Screening Tool.

Table 3:1: Colour Notation

COLOUR	SENSITIVITY	REQUIRED ACTION
DARK RED	VERY HIGH	Field assessment and protocol for finds is required
RED	HIGH	Desktop study is required and based on the outcome of the desktop study, a field assessment is likely
ORANGE	MEDIUM	Desktop study is required
GREEN	LOW	No palaeontological studies are required however a protocol for finds is required

As indicated in Figure 3.1 below, the project area is located in what is mapped out High Relative Paleontological Sensitivity.

Figure 3:1: Relative Paleontology Sensitivity Map (merged)



In the event that any fossils are to be discovered during construction, the following needs to be undertaken:

- Work should cease immediately,
- The area must be cordoned off,
- The contractor must contact AMAFA;
- No fossils are to be removed by the workers/contractors

4 CONCLUSION

There are no cultural or heritage resources located within the St Chads project area and as such, the proposed development will not have a negative impact on any heritage sites. However, depending on the findings of the desktop-based Palaeontological Assessment, a field assessment may need to be conducted to ensure that no palaeontological resources are negatively affected by the proposed development.