

**PRELIMINARY HERITAGE ASSESSMENT FOR THE ST CHADS  
SUBSIDISED HOUSING DEVELOPMENT**



## **TABLE OF CONTENTS**

1	INTRODUCTION .....	1
1.1	PROJECT DESCRIPTION .....	1
1.2	LOCATION .....	1
2	CULTURAL HERITAGE.....	2
3	PALEONTOLOGY .....	4
4	CONCLUSION.....	6

# **1 INTRODUCTION**

## **1.1 PROJECT DESCRIPTION**

The proposed project is aimed at constructing and formalising residential units within existing household footprints together with the formalisation of supporting infrastructure such as internal roads and water supply pipelines within the Alfred Duma Local Municipality. The project area is characterised by medium-density residential settlements. The proposed development will entail the following:

- The development of approximately 946 Residential Units
- Formalisation of internal roads as well as stormwater infrastructure
- Pipelines for the transportation of water supply.

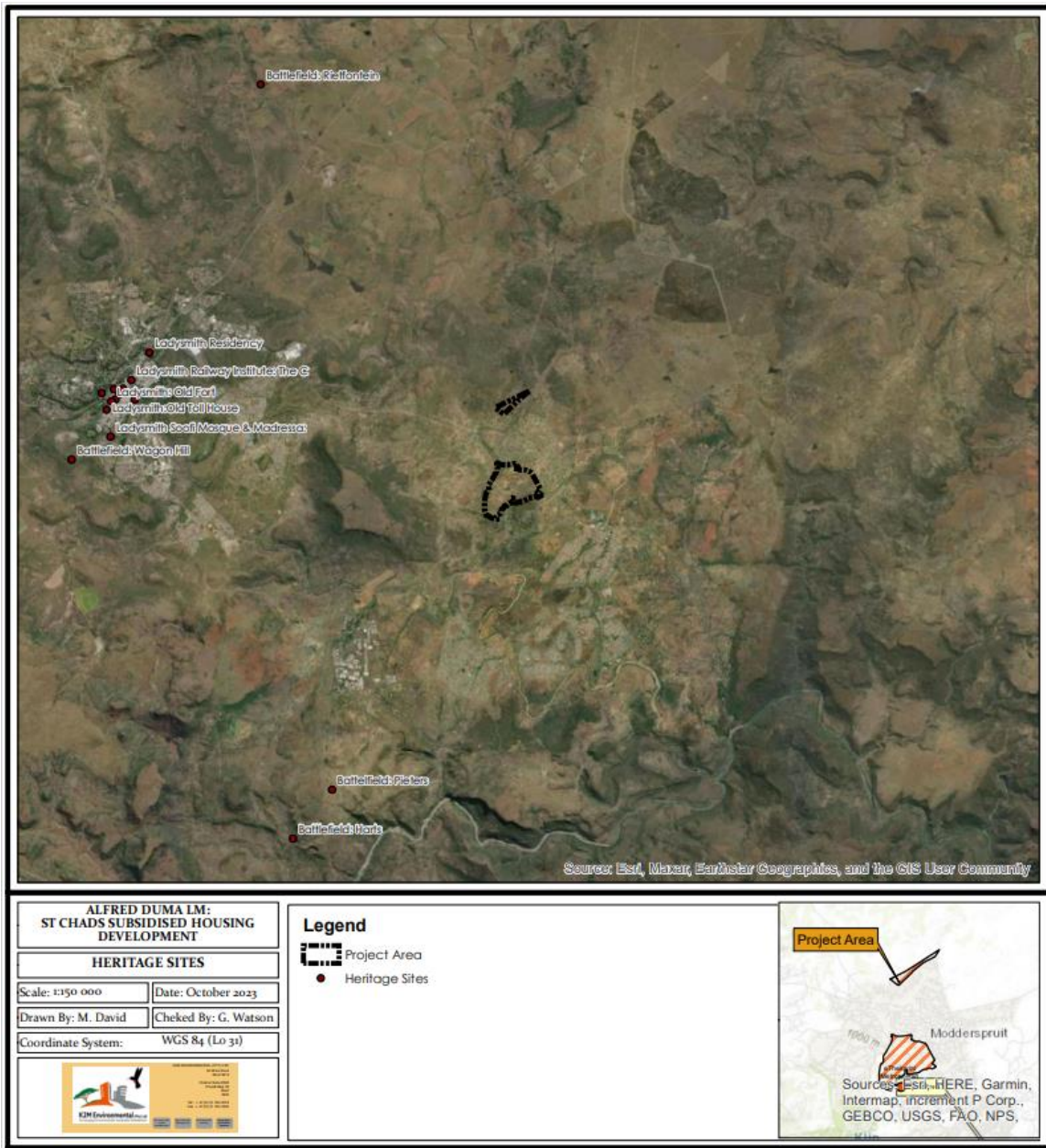
## **1.2 LOCATION**

The proposed project is located in Ward 27 of the Alfred Duma Local Municipality and is located approximately 11.1 km east of Ladysmith. The property is described as RE 1185 of Modder Spruit.

## 2 CULTURAL HERITAGE

As indicated in Map 2.1 below, there are no heritage sites within the St Chads project area. The closest heritage site is the Pieters Battlefield Heritage Site, located approximately 10.2 km southwest of the project area.

**Map 2.1: Heritage Sites**



As depicted in Table 2.1 below, the Alfred Duma Local Municipality contains 22 Heritage Sites.

**Table 2.1: Heritage Sites located within the Alfred Duma Municipality**

<b>SITE</b>	<b>PROTECTION</b>	<b>LATITUDE</b>	<b>LONGITUDE</b>
<b>Battlefield: Pieters</b>	Not Proclaimed	-28.66676	29.84462
<b>Battlefield: Elandslaagte</b>	Provincial List	-28.42118	29.98039
<b>Battlefield: Harts</b>	Not Proclaimed	-28.67986	29.83251
<b>Battlefield: Rietfontein</b>	Not Proclaimed	-28.47578	29.82496
<b>Battlefield: Spioenkop</b>	Provincial List	-28.42270	29.97964
<b>Battlefield: Vaalkrantz</b>	Not Proclaimed	-28.67623	29.63151
<b>Battlefield: Wagon Hill</b>	Heritage Landmark	-28.57668	29.76591
<b>Colenso: Bulwer Bridge</b>	Provincial List	-28.73611	29.81944
<b>Hime Bridge Platberg</b>	Provincial List	-28.36088	30.01104
<b>Hindu Thirukootam and Shree Ganase</b>	Heritage Landmark	-28.56066	29.78532
<b>Ladysmith Railway Institute</b>	Provincial List	-28.55546	29.78440
<b>Ladysmith Residency</b>	Heritage Landmark	-28.54798	29.79007
<b>Ladysmith: Soofi Mosque &amp; Madressa</b>	Heritage Landmark	-28.57062	29.77792
<b>Ladysmith Town Hall</b>	Provincial List	-28.55913	29.78068
<b>Ladysmith: Castor &amp; Pollux</b>	Heritage Object	-28.55768	29.78192
<b>Ladysmith: Dutch Reformed Church</b>	Heritage Landmark	-28.56071	29.77948
<b>Ladysmith: Gen George White Headquarters</b>	Not Proclaimed	-28.55884	29.77537
<b>Ladysmith: Old Fort</b>	Not Proclaimed	-28.56105	29.77826
<b>Ladysmith: Keer Weder</b>	Heritage Landmark	-28.55793	29.77909
<b>Ladysmith: Old Toll House</b>	Not Proclaimed	-28.56343	29.77676
<b>Military Cemetery: Elandslaagte</b>	Not Proclaimed	-28.41179	29.95354
<b>Military Cemetery: Elandslaagte 2</b>	Provincial List	-28.42270	29.97964

### 3 PALEONTOLOGY

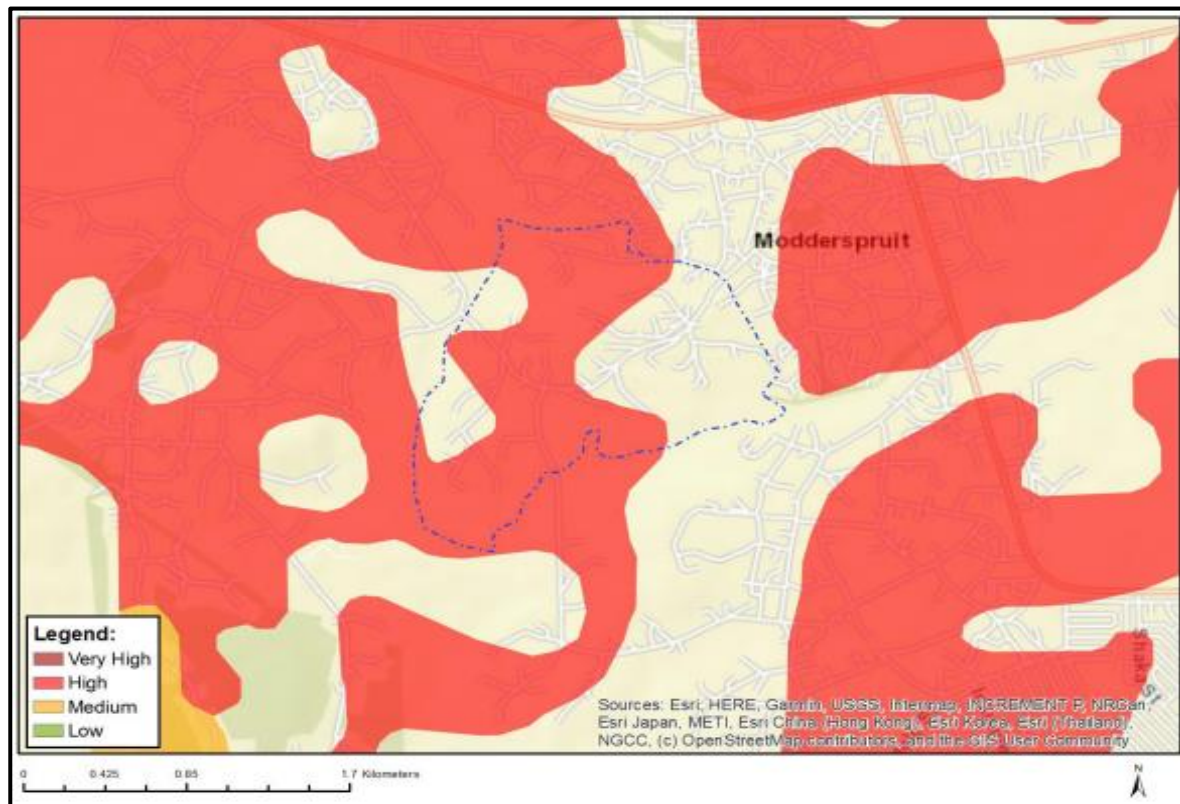
The impact of the proposed development on local fossil heritage is determined on the basis of the palaeontological sensitivity of the rock units concerned and the nature and scale of the proposed development, specifically with regards to the extent of fresh bedrock excavation. The corresponding colour notation for the various palaeontological sensitivity classes depicted in Table 3.1 below is adapted from the National Screening Tool.

**Table 3:1: Colour Notation**

COLOUR	SENSITIVITY	REQUIRED ACTION
DARK RED	VERY HIGH	Field assessment and protocol for finds is required
RED	HIGH	Desktop study is required and based on the outcome of the desktop study, a field assessment is likely
ORANGE	MEDIUM	Desktop study is required
GREEN	LOW	No palaeontological studies are required however a protocol for finds is required

As indicated in Figure 3.1 below, the project area is located in what is mapped out High Relative Paleontological Sensitivity.

Figure 3:1: Relative Paleontology Sensitivity Map (merged)



In the event that any fossils are to be discovered during construction, the following needs to be undertaken:

- Work should cease immediately,
- The area must be cordoned off,
- The contractor must contact AMAFA;
- No fossils are to be removed by the workers/contractors

## **4 CONCLUSION**

There are no cultural or heritage resources located within the St Chads project area and as such, the proposed development will not have a negative impact on any heritage sites. However, depending on the findings of the desktop-based Palaeontological Assessment, a field assessment may need to be conducted to ensure that no palaeontological resources are negatively affected by the proposed development.