



SUMMARY OF HERITAGE ISSUES ON THE ARIADNE-EROS POWER TRANSMISSION LINE

27 August 2018



Tower 147 Heritage Issues

- Near 147 there are 2 graves that belong to the parents of Inkosi LD Mkhize. The graves will not be directly impacted by the tower construction. There are situated 20m away from the tower centre position.



Figure 1- Inkosi LD Mkhize family graves

Tower 148 Heritage Issues

- The tower has no graves. It is situated in an open area with no ruins or foundations of former homesteads. However, north of the tower and south there are households known to contain graves (*Figure 2*).



Figure 2- Tower 148 with no graves

Tower 149 Heritage Issues

- The tower is located in the Mthembu homestead and south of Maphumulo homestead. There are approximately 9 graves in the homestead. They are situated approximately 12m from the current tower position and to the south of the tower (*Figure 4*). The tower has been moved to the area where the family old three rondavels were built. The rondavels have since been demolished to make space for the tower (*Figure 3*)



Figure 3- Mthembu family ruins. Here there we three rondavels that have since been demolished to make way for the tower. Arrows show position of graves

Tower 149

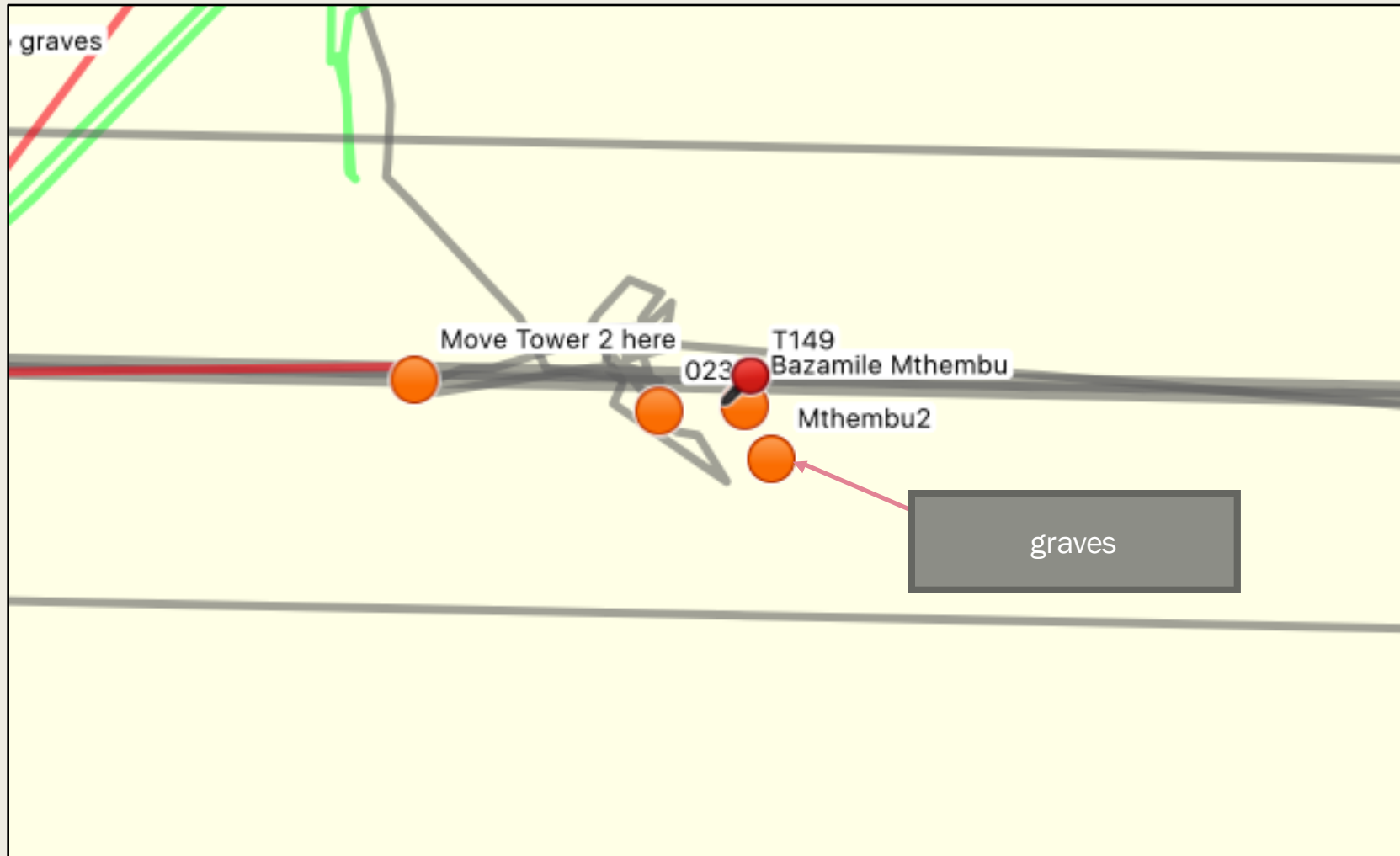


Figure 4- Mthembu family ruins. Here there we three rondavels that have since been demolished to make way for the tower

Tower 150 Heritage Issues

- The tower is situated in the former Koyama family homestead. Here construction activities are underway. The graves are situated south of the tower (*Figure 5 and 6*).



Figure 5- Sifiso Koyama family graves situated south of tower 150 whose foundations are nearly complete.

Tower 150 Heritage Issues

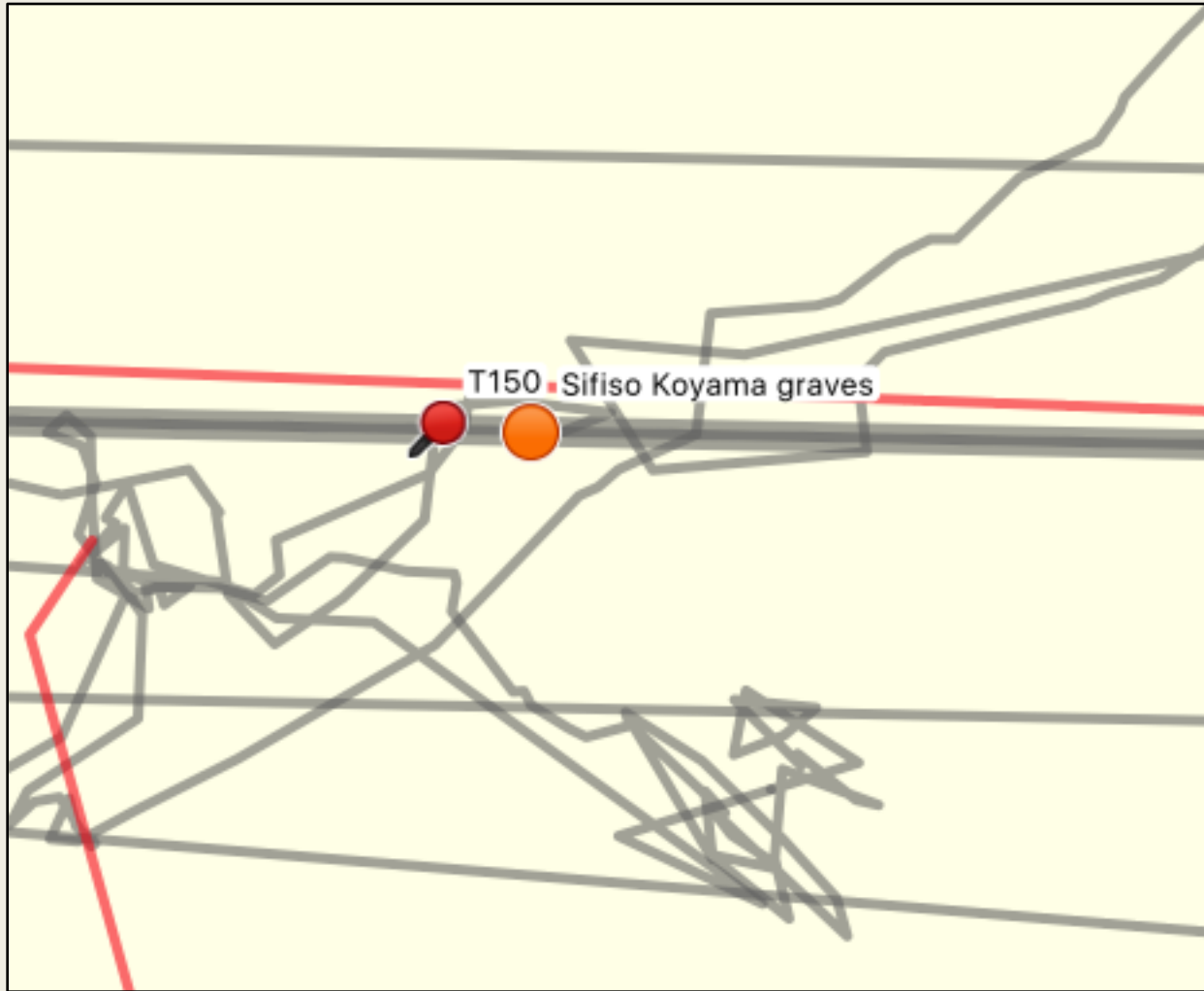


Figure 6- Sifiso Koyama family graves in relation to the tower position.

Tower 151 and 152 Heritage Issues

The tower has no graves on tower 151. Tower **152** has issues. There are known graves south, east and west of the tower. There are also ruins east and west of the tower. The tower foundation have already been dug up and cement poured. An assessment of the tower foundation yielded the following information:

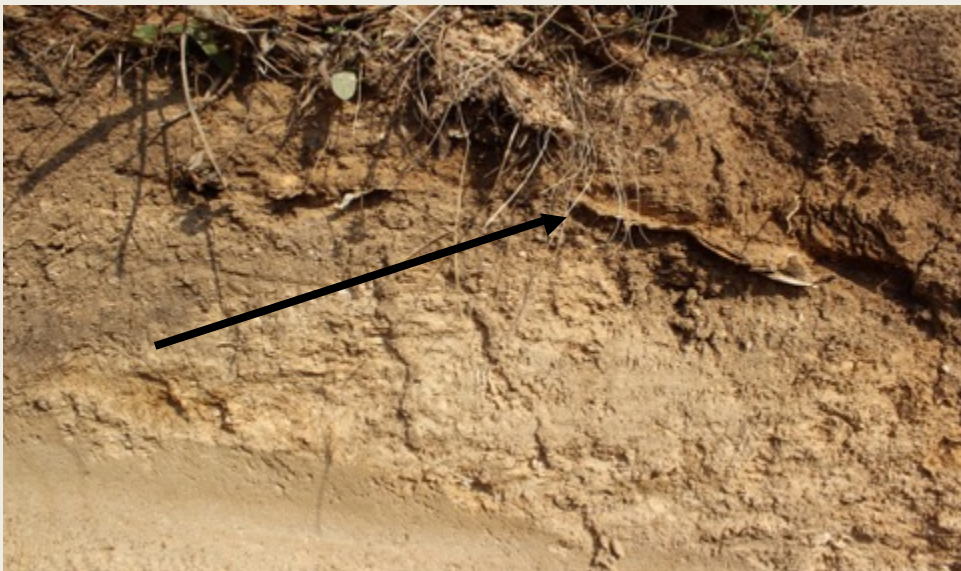
- A human heap bone was found (*Figure 7*)
- There were also stained clothes that were found in the soil – this is typical of stained clothes during burial decomposition process (*Figure 8*)
- A metal zinc was also found on the soil dump – this is another indicator of grave disturbance since metal zincs are often place above the casket in burial processes (*Figure 9*)



casket plastic and clothes (*Figure 10*)

Figure 7- Part of human pelvis bone found in the excavated soil

Tower 152 Heritage Issues



*Figure 8-
Grave indicators*

Tower 152 Heritage Issues

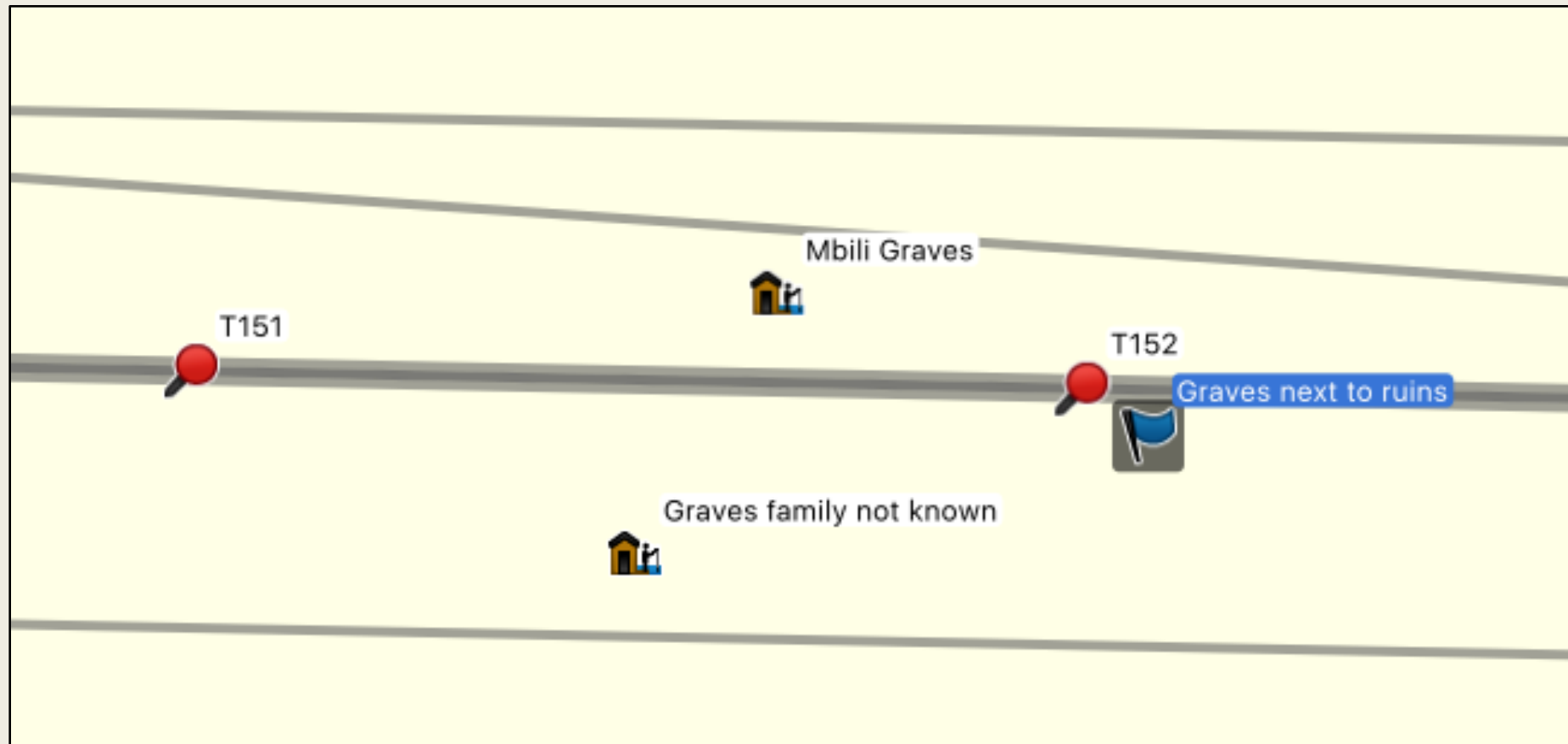


Figure 9- Location of grave sites in relation to Tower 152

Tower 153 Heritage Issues

- The tower has no graves. However, south-east of the tower and on the road that has been created to access the tower two graves have been found (*Figure 10 and 11*). One of the graves is slightly scraped by the grader.



Figure 10- Two graves located next to a road used to access tower 153

Tower 153 Heritage Issues

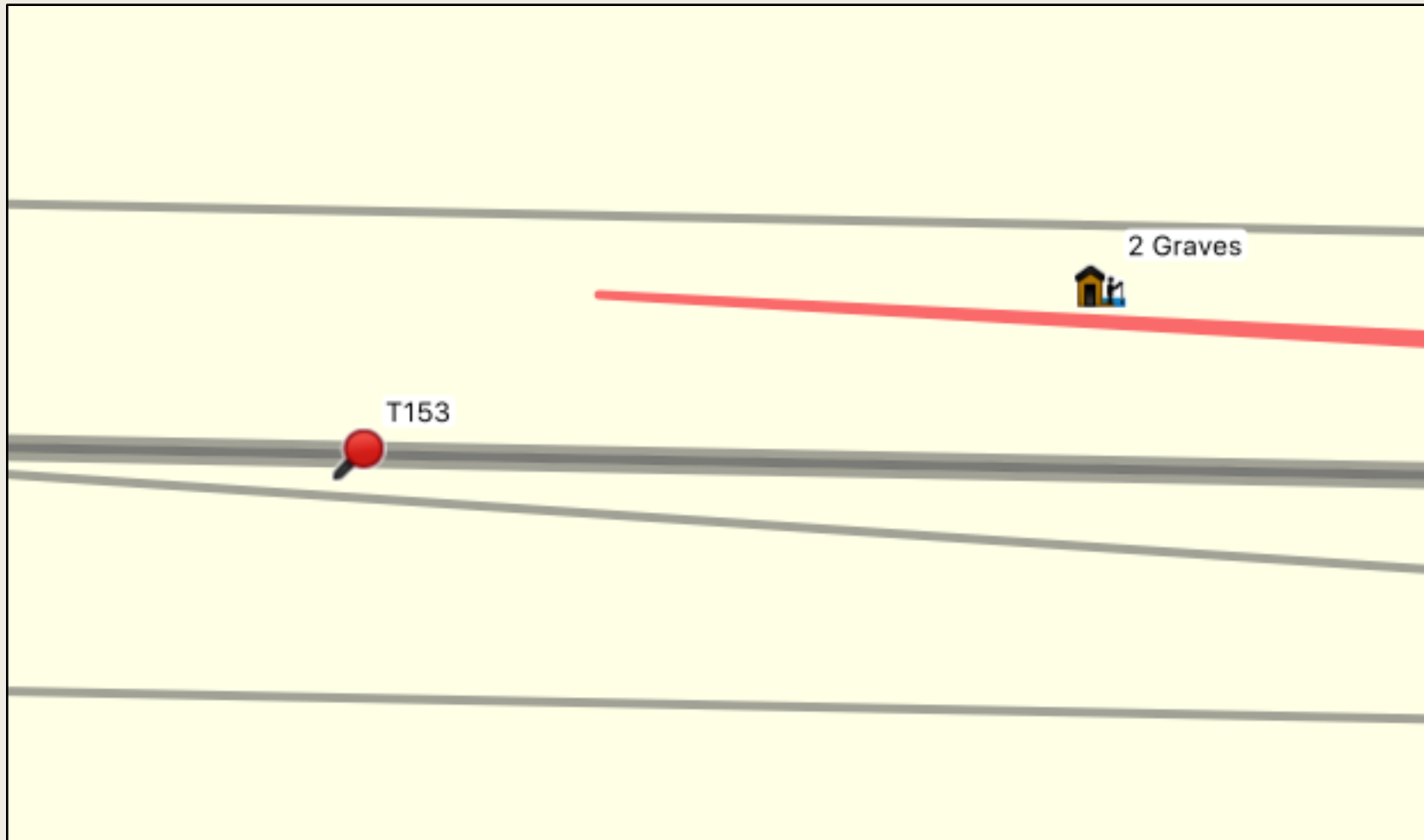


Figure 11- Location of the two graves in relation to tower 153

Tower 154 and 155 Heritage Issues

- There are no issues in terms of Tower 154. There is, however, a challenge between Towers 154 and 155. When a road to access Tower 155 was initially constructed, it disturbed a grave belonging to the Mkhize family. The road has since been diverted to a new location, but the grave issue still stands as it has not yet been addressed. The figure below show the location of the grave in relation to Tower 154 and Tower 155 (Figure 12).

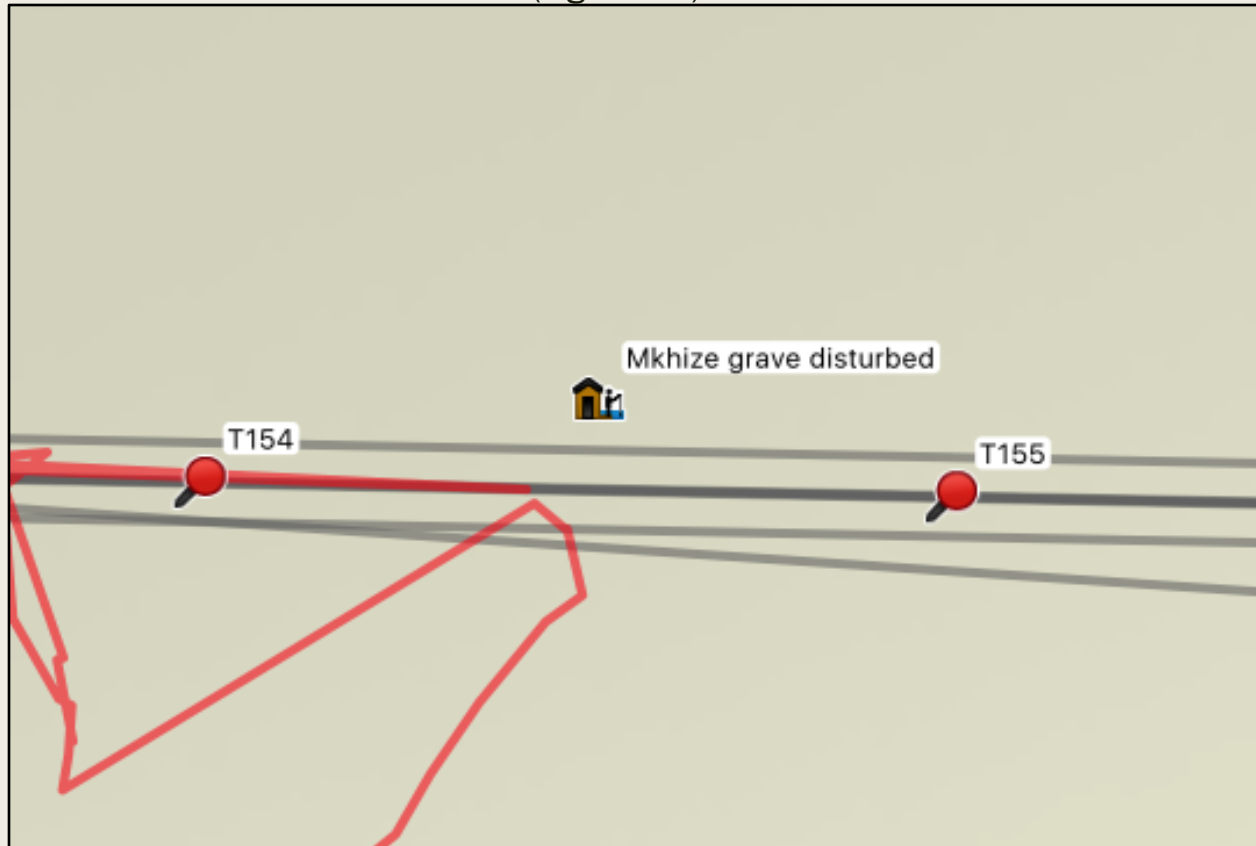


Figure 12- Location of the Mkhize family grave that was disturbed through road construction activity

Conclusions

- There are three issues on site. There have been accidental desecration of graves during construction activities on Tower 152. The tower is constructed in an area with ruins both east and west of the tower position. The contractor would have not known about the graves since they are not clearly marked. However, whenever there are ruins there is always high likelihood that there will be graves.
- The survey conducted on this site yielded a fraction of human pelvis bone and other grave indicators such as stained clothes which would have been associated with the burial as well as plastic that remains when a casket decomposes (*Figures 7 to 9*).
- On the road to Tower 153 a grave has been slightly scrapped by a grader. The disturbance is not that significant (*Figure 10 and 11*)
- A grave between Tower 154 and 155 was disturbed during the construction of access road to 155 which has since been abandoned and diverted to the south. This issue is suggested to have been reported to the contractor. However, there has been no solution to this matter and it has created a social risk to the project as the Mkhize family is considering pursuing a legal case against the project proponent i.e. Eskom, if the matter is not addressed. The other social risk is associated with Tower 155. Near this tower there are graves that belong to the Ngcobo family which is no concerned about the construction activities on site and the possibility of desecration of their family graves. The concern comes as the result of the contractor not attending to and addressing the the issue of Mkhize family grave (*Figure 12*)

Recommendations

- It is recommended that construction activities should be stopped in Tower 152 until NGT obtain a grave rescue permit from Amafa KwaZulu-Natali. NGT will commence with the application on Monday the 27 August 2018
- The graves on the road to Tower 153 should be immediately fenced off to avoid them be disturbed by trucks/graders working on Tower 153. An instruction has also been issued to the family and they will commence with the fence from Monday 27 August 2018
- The issue of Mkhize grave should be attended to with immediate effect – Induna Meyiwa has reported the issue to the contractor and the social team on site which was represented by Ms Snenhlanhla Mngadi. However, nothing has been done to date and this has posed social risks to the project – the Ngcobo family with ruins near Tower 155 is concerned that the contractor might desecrate their family graves.
- All other graves are clear from construction activities, but it is proposed that extra measures should be undertaken to instruct the contractor on site on how to spot and deal with issues of unmarked graves
- It is recommended that construction activities may proceed as planned in all other tower with exception to Tower 152 which requires urgent rescue permit.
- The issue of Mkhize grave should also be attended to so that the Ngcobo family which has graves near Tower 155 may be at ease and allow construction activities to proceed on Tower 155