

**PRELIMINARY HERITAGE ASSESSMENT FOR THE TARS VALLEY  
SUBSIDISED HOUSING DEVELOPMENT**



## **TABLE OF CONTENTS**

1	INTRODUCTION .....	1
1.1	PROJECT DESCRIPTION .....	1
1.2	LOCATION .....	1
2	CULTURAL HERITAGE.....	2
3	PALEONTOLOGY .....	4
4	CONCLUSION.....	6

# **1 INTRODUCTION**

## **1.1 PROJECT DESCRIPTION**

The proposed project is a largely Brownfield development and is aimed at constructing residential units within existing household footprints together with the formalisation of supporting infrastructure such as internal roads, water supply pipelines and sewerage pipelines within the Dr Nkosazana Dlamini-Zuma Local Municipality. The project area is characterised by medium-density residential settlements. The proposed development will entail the following:

- The development of approximately 332 Residential Units
- Construction of internal roads as well as stormwater infrastructure
- Pipelines for the transportation of water supply and waterborne sewage.

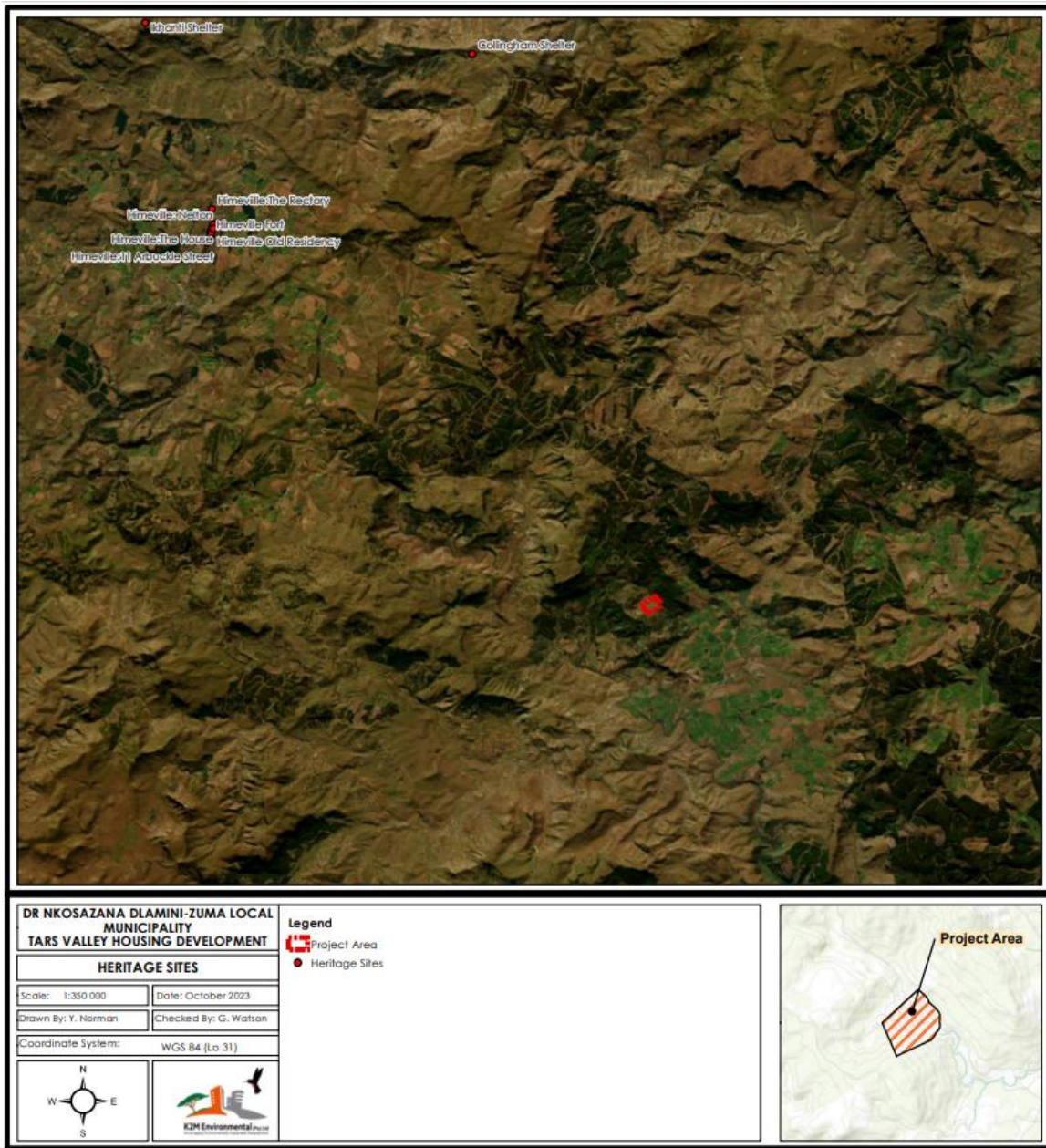
## **1.2 LOCATION**

The proposed project is located in Ward 7 of the Dr. Nkosazana Dlamini-Zuma Local Municipality and is located approximately 32.9 km northwest of Ixopo. The property is described as Farm Portion of LOT S15A 9588

## 2 CULTURAL HERITAGE

As indicated in Map 2.1 below, there are no heritage sites within the Tars Valley project area. The closest heritage site is the Himeville Old Residency Heritage Site, located approximately 36.5 km northwest of the project area.

**Map 2.1: Heritage Sites**



As depicted in Table 2.1 below, the Dr. Nkosazana Dlamini-Zuma Local Municipality contains 11 Heritage Sites.

**Table 2.1: Heritage Sites located within the Inkosi Langalibalele Municipality**

<b>SITE</b>	<b>PROTECTION</b>	<b>LATITUDE</b>	<b>LONGITUDE</b>
<b>Himeville:The Rectory</b>	Heritage Landmark	-29.73383	29.51351
<b>Himeville Fort</b>	Provincial List	-29.74965	29.51258
<b>Himeville Old Residency</b>	Provincial List	-29.74644	29.51304
<b>Himeville: 47 Arbuckle Street</b>	Provincial List	-29.74813	29.51228
<b>Himeville: Church Of St Michael &amp;</b>	Heritage Landmark	-29.74598	29.51424
<b>Himeville: Nelton</b>	Heritage Landmark	-29.74297	29.51536
<b>Himeville: Underberg War Memorial</b>	Provincial List	-29.74833	29.51319
<b>Himeville: 11 Arbuckle Street</b>	Heritage Landmark	-29.75493	29.51029
<b>Himeville:The House</b>	Heritage Landmark	-29.74372	29.51416
<b>Ikhanti Shelter</b>	Not Proclaimed	-29.61674	29.47150
<b>Mpongweni Cave</b>	Provincial List	-29.68178	29.35959

### 3 PALEONTOLOGY

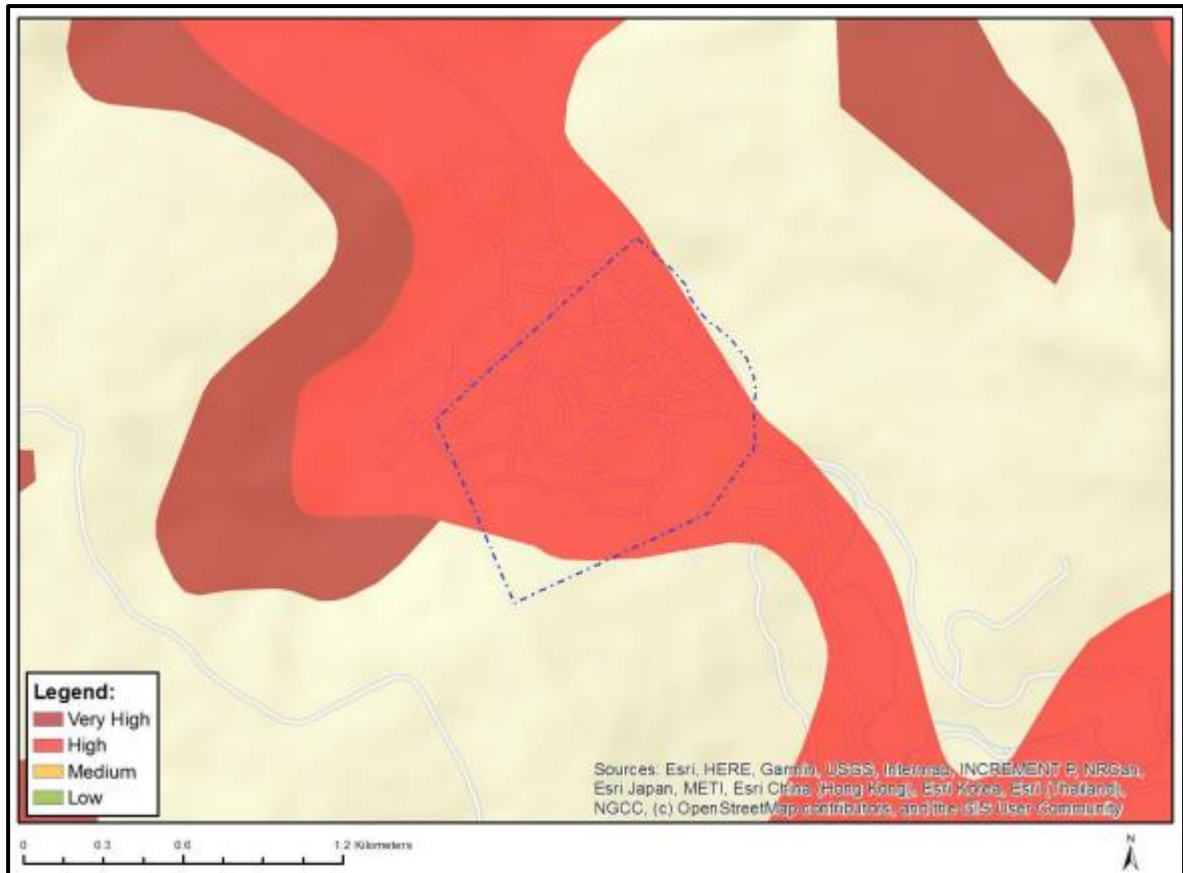
The impact of the proposed development on local fossil heritage is determined on the basis of the palaeontological sensitivity of the rock units concerned and the nature and scale of the proposed development, specifically with regards to the extent of fresh bedrock excavation. The corresponding colour notation for the various palaeontological sensitivity classes depicted in Table 3.1 below is adapted from the National Screening Tool.

**Table 3:1: Colour Notation**

COLOUR	SENSITIVITY	REQUIRED ACTION
DARK RED	VERY HIGH	Field assessment and protocol for finds is required
RED	HIGH	Desktop study is required and based on the outcome of the desktop study, a field assessment is likely
ORANGE	MEDIUM	Desktop study is required
GREEN	LOW	No palaeontological studies are required however a protocol for finds is required

As indicated in Figure 3.1 below, the project area is located in what is mapped out High Relative Paleontological Sensitivity.

Figure 3:1: Relative Paleontology Sensitivity Map



In the event that any fossils are to be discovered during construction, the following needs to be undertaken:

- Work should cease immediately,
- The area must be cordoned off,
- The contractor must contact AMAFA;
- No fossils are to be removed by the workers/contractors

## **4 CONCLUSION**

There are no cultural or heritage resources located within the Tars Valley project area and as such, the proposed development will not have a negative impact on any heritage sites. However, depending on the findings of the desktop-based Palaeontological Assessment, a field assessment may need to be conducted to ensure that no palaeontological resources are negatively affected by the proposed development.