

DIGBY WELLS
ENVIRONMENTAL

Your Preferred Environmental
and Social Solutions Partner

Providing innovative and sustainable
solutions throughout the resources sector

Proposed Dalyshope Coal Mining Project, situated in the Magisterial District of Lephalale, Limpopo Province

Notification of Intent to Develop

Prepared for:

Anglo Operations (Pty) Ltd

Project Number:

UCD6170

February 2021



This document has been prepared by Digby Wells Environmental.

Report Type:	Notification of Intent to Develop
Project Name:	Proposed Dalyshope Coal Mining Project, situated in the Magisterial District of Lephalale, Limpopo Province
Project Code:	UCD6170

Name	Responsibility	Signature	Date
Shannon Hardwick HRM Consultant ASAPA Member: 451	Document Compilation		February 2021
Justin du Piesanie Divisional Manager: Social and Heritage Services ASAPA Member 270	Technical Review		

This report is provided solely for the purposes set out in it and may not, in whole or in part, be used for any other purpose without Digby Wells Environmental prior written consent.

TABLE OF CONTENTS

1	Introduction	1
2	Project Details	1
3	Assessment Process.....	7
3.1	NHRA Section 38(1) activities	7
3.2	EIA Regulations listed activities.....	8
3.3	Identified and known heritage resources and potential impacts	18
4	Recommendation	20

LIST OF TABLES

Table 1: Project Location Details.....	3
Table 2: Landowner Details.....	4
Table 3: Current Assessment Processes	7
Table 4: NHRA Section 38 triggers	8
Table 5: Identified listed activities.....	9
Table 6: Identified heritage resources in terms of Section 3 of the NHRA	18
Table 7: Specialist heritage recommendations.....	20

LIST OF PLANS

Plan 1: Regional Project Setting.....	5
Plan 2: Proposed Project Design	6

1 Introduction

Anglo Operations (Pty) Ltd (hereinafter Anglo) and Universal Coal Development IV (Pty) Ltd (hereinafter Universal) have partnered to participate in the proposed Dalyshope Coal Mining Project near Lephalale in the Limpopo Province (the Project). Anglo will provide funding and will manage the Project, including the for the Mining Right (MR) Application. Anglo currently hold two Prospecting Rights¹ authorised in terms of the Mineral and Petroleum Resources Development Act, 2002 (Act No. 28 of 2002) (MPRDA) to prospect for coal.

Universal is applying for the following authorisations and licences on behalf of Anglo:

- MR in terms of the MPRDA;
- Environmental Authorisation in terms of the National Environmental Management Act, 1998 (Act No. 107 in 1998);
- A Waste Management Licence (WML) in terms of the National Environmental Management: Waste Act, 2008 (Act No. 59 of 2008) (NEM:WA);
- An Integrated Water Use Licence (IWUL) in terms of the National Water Act, 1998 (Act No. 38 of 1998) (NWA); and
- Tree Permits in terms of the applicable legislation.

In support of these applications, Universal appointed Digby Wells Environmental (hereinafter Digby Wells) to complete an Environmental Impact Assessment (EIA) process in compliance with the NEMA and the NEMA EIA Regulations, 2014 (Government Notice Regulation [GN R] 982 of 04 December 2014 as amended by GN R 326 of 7 April 2017) (EIA Regulations, 2014, as amended).

The EIA process includes a specialist Heritage Resources Management (HRM) process in compliance with the National Heritage Resources Act, 1999 (Act No. 25 of 1999). This document comprises the Notification of Intent to Develop (NID) to notify the Heritage Resource Authorities (HRAs) of the proposed Project in compliance with Section 38(1) of the NHRA.

2 Project Details

The proposed Project is situated within the Waterberg Coalfield and is located near the town of Lephalale. The Project area falls within the Lephalale Local Municipality (LLM) of the Waterberg District Municipality (WDM). Table 1 summarises the location details and Plan 1 presents these details graphically.

The two Prospecting Rights held by Anglo collectively include 24 properties. Some of these properties have been renamed and some of the boundaries have been realigned. Table 1 presents a list of the properties included in the Prospecting Area. The properties highlighted

¹ LP 30/5/1/1/2/110648 (PR) (as renewed) and 30/5/1/1/2/10649 PR (as renewed)



in bold are those earmarked for the proposed Project. Table 2 includes the details of the relevant landowners.

The Project will include the establishment of an opencast coal mine which will be operated by contractors utilising truck and shovel strip-mining methods. The mine has an anticipated Life of Mine (LoM) of 30 years. All coal will be extracted from one opencast pit and the Project will require the following infrastructure:

- Contractors laydown yard;
- Temporary stockpiles for construction;
- Opencast 1 ("OC1") pit;
- Run of Mine (ROM) stockpiles;
- Slew product stockpiles;
- Discard facility;
- Topsoil and subsoil stockpiles;
- Stores;
- Overburden (Hards/Softs) stockpiles;
- Weighbridges;
- Conveyer belts;
- Workshop;
- Two Pollution Control Dams (PCDs);
- Washing plant;
- Crush and Screen plant;
- Offices;
- Change-house;
- Temporary PCD for construction;
- Laboratory;
- Laundry facility;
- Water tanks;
- Potable water pipeline and distribution;
- Dirty water pipeline;
- Sewage Treatment Plant (STP);
- Water Treatment Plant (WTP);
- Brine Pond;
- Diesel/wash bay and oil separator;
- Explosives magazine;
- Powerline/s;
- Substation;
- Rail link and Rail loadout facility;
- Brake-test ramp;
- LDV and light vehicle access road;
- Road upgrade (Steenbokpan to site);
- Truck access road; and
- Stormwater management infrastructure.

Table 1: Project Location Details

Name of property/ies	Dalyshope Prospecting Rights Area
Street address or location (e.g.: Off R44)	South and southeast of the Limpopo River and international border with Botswana. Access to the Project area is achieved from the D175 District Road from Steenbokpan.
Erf or farm number/s	<ul style="list-style-type: none"> • Bergen Op Zoom 188 LQ • Beska 180 LQ (formerly a portion of Breda 147 LQ) • Boompan 237 LQ • Breda 147 LQ • Buurmanshulp 136 LQ • Canada 229 LQ (now subdivided into Canada 229 LQ and Matopi 705 LQ) • Constantia 122 LQ • Dalyshope 232 LQ • Ecarte 156 LQ • Fairfield 154 LQ • A Portion of Fig Tree 716 LQ (subdivided from Constantia 122 LQ) • Gaylad 208 LQ • Greenrust 708 LQ (formerly Greenwich 113 LQ) • Hilton 190 LQ • Klaarwater 321 LQ • Portion 1 and Remaining Extent (RE) of Kromhoek 193 LQ • Portions 1 and 2 and RE of Lhea 437 LQ • Nazarov 685 LQ (formed through sub-dividing Dalyshope 232 LQ and Klaarwater 231 LQ) • Rooiboslaagte 144 LQ • Stellenbosch 203 LQ • Surrey 18 LQ • Virginia 6 LQ • Vryplaats 163 LQ • Portion 1 and 4 and RE of Vucht 436 LQ • Portion 1 and RE of Weltevreden 200 LQ • Wolvendraai 481 LQ • Wynberg 215 LQ
Coordinates of approximate centre of project area	23°32'48.30"S
	27°15'44.95"E

Town or District	Steenbokpan (20 km northwest) Lephalale (60 km east)
Responsible Municipality	LLM in the WDM
Extent of property	4957.7 ha.
Maximum extent of proposed development	458 ha (excluding the linear infrastructure)
Current use	Game and livestock farming (grazing)
Predominant land use/s of surrounding properties	Game and livestock farming, hunting and tourism

Table 2: Landowner Details

Name	Property	Notified
Anglo	Dalyshope 232 LQ	Not Applicable
	Klaarwater 321 LQ	

Dalyshope Coal Mine

Regional Setting

Legend

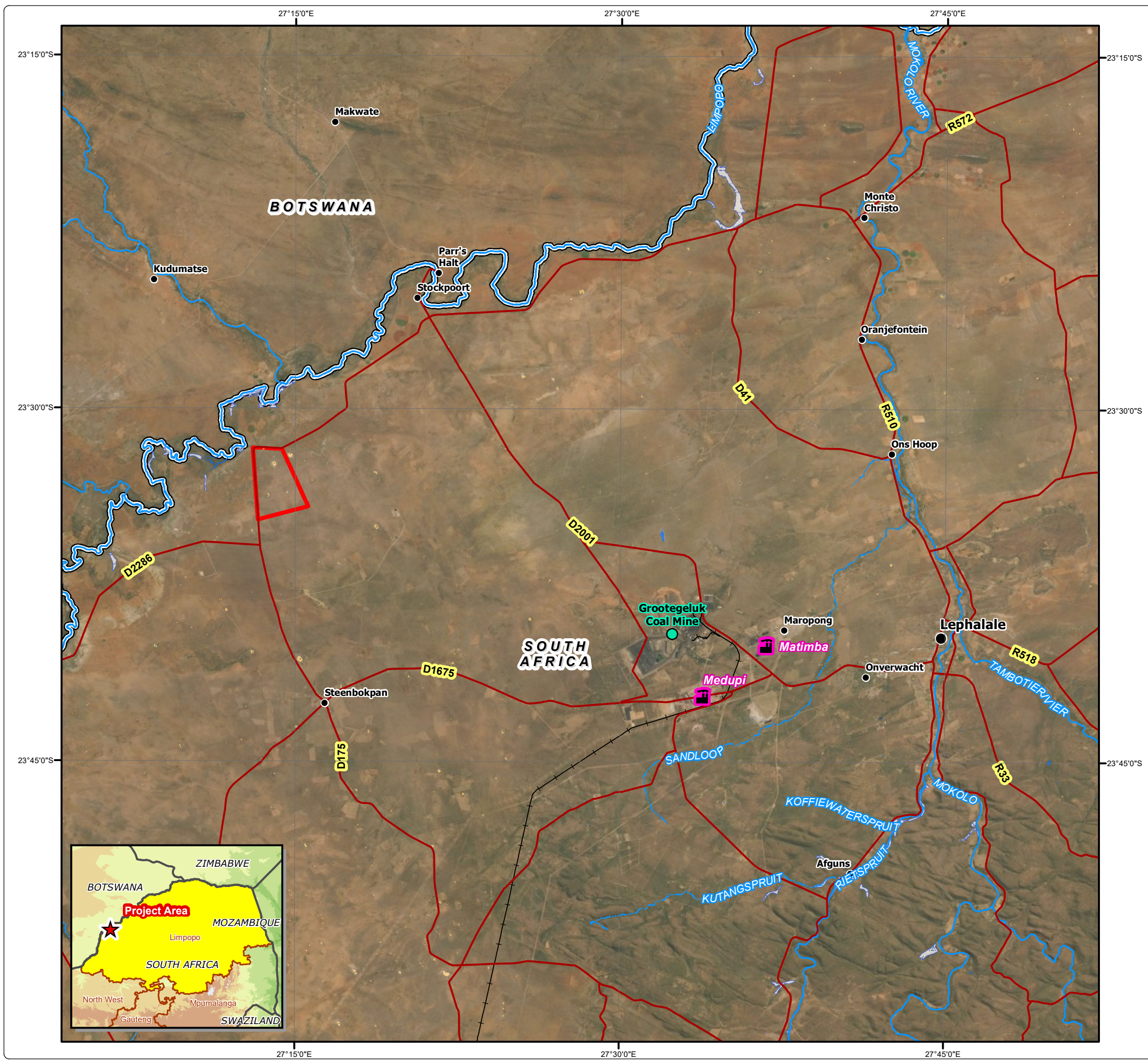
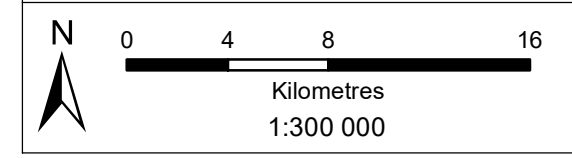
- Project Area
- Power Station
- Grootegeluk Coal Mine
- Major Town
- Settlement
- Main Road
- Railway Line
- Perennial Stream
- Non-Perennial Stream
- Dam / Lake
- Non-Perennial Pan
- Marsh / Swamp
- International Boundary



DIGBY WELLS
ENVIRONMENTAL

• Sustainability • Service • Positive Change • Professionalism • Future Focused • Integrity

Projection: Transverse Mercator Ref #: UCD6170_H_01_KR_v2
Datum: WGS 1984 Revision Number: 1
Central Meridian: 27°E Date: 13/03/2020

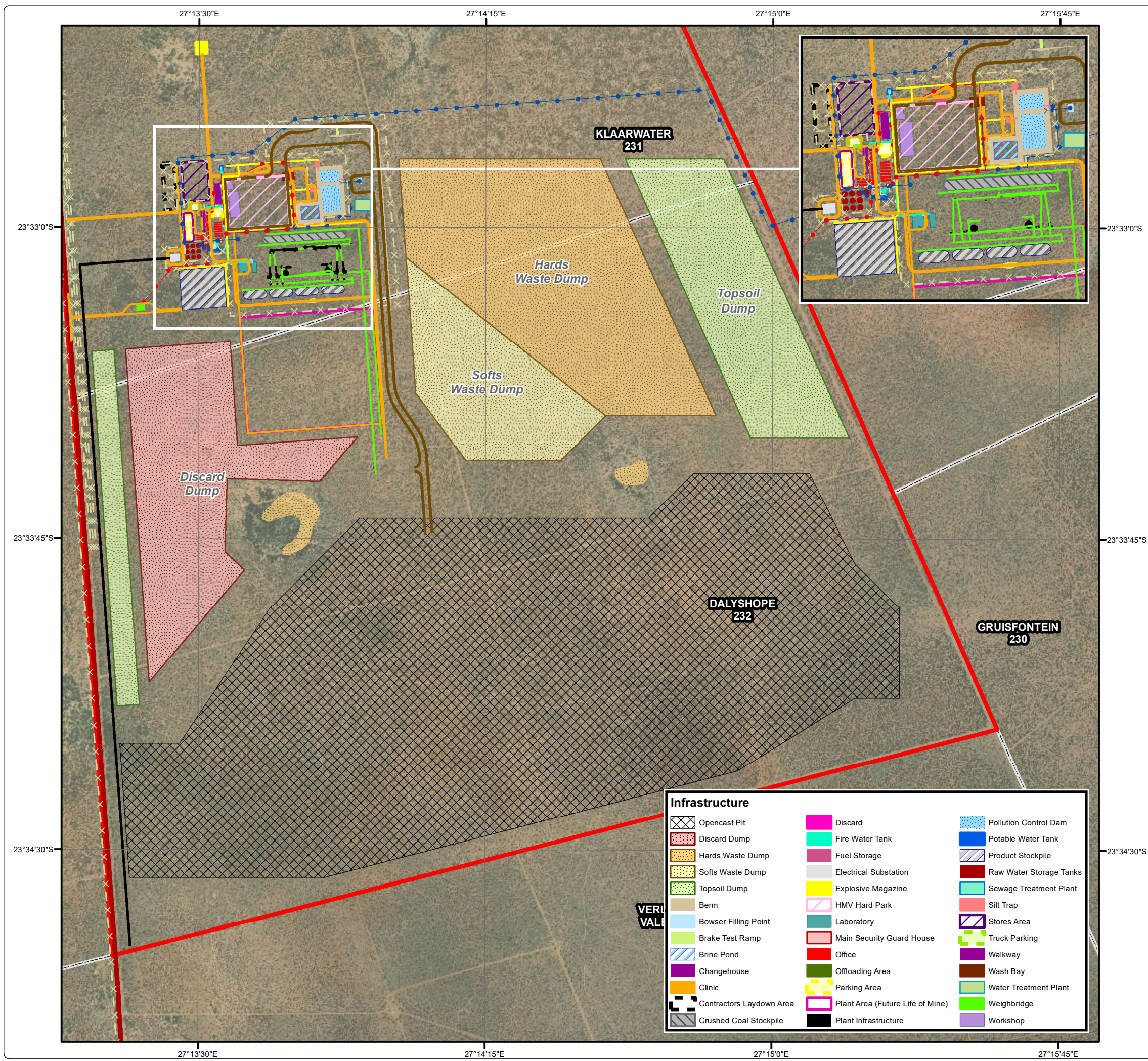


Dalyshope Coal Mine

Infrastructure Layout

Legend

- Project Area
 - Non-Perennial Pan
 - Parent Farm
- ### Infrastructure Layout
- Access Road
 - Trunk Access Road
 - Conveyor
 - Haul Road
 - Fence
 - Fire Pipeline
 - Overhead Powerline
 - Potable Water Pipeline
 - Bulk Water Pipeline (Supply Alternative)
 - Pollution Drain
 - Sewer
 - Walkway
 - Plant

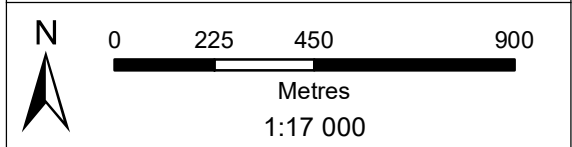


Infrastructure		
	Opencast Pit	
	Discard Dump	
	Hards Waste Dump	
	Softs Waste Dump	
	Topsoil Dump	
	Berm	
	Bowser Filling Point	
	Brake Test Ramp	
	Brine Pond	
	Changehouse	
	Clinic	
	Contractors Laydown Area	
	Crushed Coal Stockpile	
	Discard	
	Fire Water Tank	
	Fuel Storage	
	Electrical Substation	
	Explosive Magazine	
	HMV Hard Park	
	Laboratory	
	Main Security Guard House	
	Office	
	Offloading Area	
	Parking Area	
	Plant Area (Future Life of Mine)	
	Plant Infrastructure	
	Pollution Control Dam	
	Potable Water Tank	
	Product Stockpile	
	Raw Water Storage Tanks	
	Sewage Treatment Plant	
	Silt Trap	
	Stores Area	
	Truck Parking	
	Walkway	
	Wash Bay	
	Water Treatment Plant	
	Weighbridge	
	Workshop	

DIGBY WELLS
ENVIRONMENTAL

• Sustainability • Service • Positive Change • Professionalism • Future Focused • Integrity

Projection: Transverse Mercator Ref #: UCD6170_H_02_KR_v2
 Datum: WGS 1984 Revision Number: 1
 Central Meridian: 27°E Date: 17/08/2020



3 Assessment Process

Table 3 summarises the impact assessment processes that are currently being conducted for the proposed project.

Table 3: Current Assessment Processes

Legislation (e.g., NEMA, MPRDA)	Current phase of assessment process (e.g., Scoping, EIA)	Authorities receiving information	Capacity of Authorities
MPRDA	Scoping	Department of Mineral Resources and Energy (DMRE)	Licencing
NEMA	Scoping	DMRE	Licencing
NHRA	Scoping	South African Heritage Resources Agency (SAHRA)	Commenting
	Scoping	Limpopo Heritage Resources Authority (LIHRA)	Noting

These assessments are required in terms of legislated and / or regulated activities outlined in Sections 3.1 to 3.3 below.

3.1 NHRA Section 38(1) activities

Table 4 presents the activities listed in Section 38(1) of the NHRA which will be triggered by the Project and which generally require heritage assessments be undertaken.

Table 4: NHRA Section 38 triggers

		NHRA Section 38 (1) Activities / Triggers	Summary description (e.g., 500 m conveyor belt, open cast pit)
<input checked="" type="checkbox"/>	a	Any linear development or barrier >300 m	STP pipelines are expected to measure 160 m. The haul roads will measure 8 km and the proposed road upgrade 20 km.
<input type="checkbox"/>	b	Any bridge or similar structure >50 m	
<input checked="" type="checkbox"/>	c	Any development or activity that will change the character of a site:	
	<input checked="" type="checkbox"/>	i $\geq 5\,000\text{m}^2$ in extent	The proposed Project activities will extend over 0.5 ha and will change the character of the site from grazing land to coal mining.
	<input type="checkbox"/>	ii Involving ≥ 3 existing erven/subdivisions	
	<input type="checkbox"/>	iii Involving ≥ 3 or more erven/divisions consolidated within past 5 years.	
<input type="checkbox"/>	d	Rezoning of a site $\geq 10\,000\text{m}^2$ in extent.	
<input checked="" type="checkbox"/>	e	Other triggers, in terms of other legislation, (e.g.: National Environment Management Act)	MPRDA and NEMA

3.2 EIA Regulations listed activities

Table 5 presents the Listed Activities included in the EIA Regulations (2014) as amended triggered by the proposed Project and which generally require impact assessments.

Table 5: Identified listed activities

NEMA Activity	NHRA Trigger	Description	Expected duration/phase
Listing Notice 1 Activity 1	38(1)(e)	<p><i>The development of facilities or infrastructure for the generation of electricity from a renewable resource where—</i></p> <ul style="list-style-type: none"> <i>(i) the electricity output is more than 10 megawatts but less than 20 megawatts; or</i> <i>(ii) the output is 10 megawatts or less but the total extent of the facility covers an area in excess of 1 hectare;</i> <p><i>excluding where such development of facilities or infrastructure is for photovoltaic installations and occurs—</i></p> <ul style="list-style-type: none"> <i>(a) within an urban area; or</i> <i>(b) on existing infrastructure.</i> 	Construction
Listing Notice 1 Activity 9	38(1)(e)	<p><i>The development of infrastructure exceeding 1 000 metres in length for the bulk transportation of water or storm water—</i></p> <ul style="list-style-type: none"> <i>(i) with an internal diameter of 0,36 metres or more; or</i> <i>(ii) with a peak throughput of 120 litres per second or more;</i> <p><i>excluding where—</i></p> <ul style="list-style-type: none"> <i>(a) such infrastructure is for bulk transportation of water or storm water or storm water drainage inside a road reserve or railway line reserve; or</i> <i>(b) where such development will occur within an urban area.</i> 	Construction

NEMA Activity	NHRA Trigger	Description	Expected duration/phase
Listing Notice 1 Activity 10	38(1)(e)	<p><i>The development and related operation of infrastructure exceeding 1 000 metres in length for the bulk transportation of sewage, effluent, process water, waste water, return water, industrial discharge or slimes –</i></p> <p><i>(i) with an internal diameter of 0,36 metres or more; or</i></p> <p><i>(ii) with a peak throughput of 120 litres per second or more;</i></p> <p><i>excluding where—</i></p> <p><i>(a) such infrastructure is for the bulk transportation of sewage, effluent, process water, waste water, return water, industrial discharge or slimes inside a road reserve or railway line reserve; or</i></p> <p><i>(b) where such development will occur within an urban area.</i></p>	Construction Operation
Listing Notice 1 Activity 11	38(1)(e)	<p><i>The development of facilities or infrastructure for the transmission and distribution of electricity—</i></p> <p><i>(i) outside urban areas or industrial complexes with a capacity of more than 33 but less than 275 kilovolts;</i></p> <p><i>or</i></p> <p><i>(ii) inside urban areas or industrial complexes with a capacity of 275 kilovolts or more;</i></p> <p><i>excluding the development of bypass infrastructure for the transmission and distribution of electricity where such bypass infrastructure is —</i></p> <p><i>(a) temporarily required to allow for maintenance of existing infrastructure;</i></p> <p><i>(b) 2 kilometres or shorter in length;</i></p> <p><i>(c) within an existing transmission line servitude; and</i></p> <p><i>(d) will be removed within 18 months of the commencement of development.</i></p>	Construction

NEMA Activity	NHRA Trigger	Description	Expected duration/phase
Listing Notice Activity 12	38(1)(e)	<p><i>The development of—</i></p> <ul style="list-style-type: none"> <i>(i) dams or weirs, where the dam or weir, including infrastructure and water surface area, exceeds 100 square metres; or</i> <i>(ii) infrastructure or structures with a physical footprint of 100 square metres or more;</i> <p><i>where such development occurs—</i></p> <ul style="list-style-type: none"> <i>(a) within a watercourse;</i> <i>(b) in front of a development setback; or</i> <i>(c) if no development setback exists, within 32 metres of a watercourse, measured from the edge of a watercourse; —</i> <p><i>excluding—</i></p> <ul style="list-style-type: none"> <i>(aa) the development of infrastructure or structures within existing ports or harbours that will not increase the development footprint of the port or harbour;</i> <i>(bb) where such development activities are related to the development of a port or harbour, in which case activity 26 in Listing Notice 2 of 2014 applies;</i> <i>(cc) activities listed in activity 14 in Listing Notice 2 of 2014 or activity 14 in Listing Notice 3 of 2014, in which case that activity applies;</i> <i>(dd) where such development occurs within an urban area;</i> <i>(ee) where such development occurs within existing roads, road reserves or railway line reserves; or</i> <i>(ff) the development of temporary infrastructure or structures where such infrastructure or structures will be removed within 6 weeks of the commencement of development and where indigenous vegetation will not be cleared.</i> 	Construction

NEMA Activity	NHRA Trigger	Description	Expected duration/phase
Listing Notice Activity 13	38(1)(e)	<i>The development of facilities or infrastructure for the off-stream storage of water, including dams and reservoirs, with a combined capacity of 50 000 cubic metres or more, unless such storage falls within the ambit of activity 16 in Listing Notice 2 of 2014.</i>	Construction
Listing Notice Activity 14	38(1)(e)	<i>The development and related operation of facilities or infrastructure, for the storage, or for the storage and handling, of a dangerous good, where such storage occurs in containers with a combined capacity of 80 cubic metres or more but not exceeding 500 cubic metres.</i>	Construction Operation
Listing Notice 1 Activity 16	38(1)(e)	<i>The development and related operation of facilities for the desalination of water with a design capacity to produce more than 100 cubic metres of treated water per day.</i>	Construction Operation
Listing Notice 1 Activity 24	38(1)(a) 38(1)(e)	<i>The development of a road— (i) for which an environmental authorisation was obtained for the route determination in terms of activity 5 in Government Notice 387 of 2006 or activity 18 in Government Notice 545 of 2010; or (ii) with a reserve wider than 13,5 meters, or where no reserve exists where the road is wider than 8 metres; but excluding a road— (a) which is identified and included in activity 27 in Listing Notice 2 of 2014; (b) where the entire road falls within an urban area; or (c) which is 1 kilometre or shorter.</i>	Construction
Listing Notice 1 Activity 25	38(1)(e)	<i>The development and related operation of facilities or infrastructure for the treatment of effluent, wastewater or sewage with a daily throughput capacity of more than 2 000 cubic metres but less than 15 000 cubic metres.</i>	Construction Operation
Listing Notice 1 Activity 30	38(1)(e)	<i>Any process or activity identified in terms of section 53(1) of the National Environmental Management: Biodiversity Act, 2004 (Act No. 10 of 2004).</i>	Construction

NEMA Activity	NHRA Trigger	Description	Expected duration/phase
Listing Notice 2 Activity 6	38(1)(e)	<p><i>The development of facilities or infrastructure for any process or activity which requires a permit or licence or an amended permit or licence in terms of national or provincial legislation governing the generation or release of emissions, pollution or effluent, excluding—</i></p> <ul style="list-style-type: none"> <i>(i) activities which are identified and included in Listing Notice 1 of 2014;</i> <i>(ii) activities which are included in the list of waste management activities published in terms of section 19 of the National Environmental Management: Waste Act, 2008 (Act No. 59 of 2008) in which case the National Environmental Management: Waste Act, 2008 applies;</i> <i>(iii) the development of facilities or infrastructure for the treatment of effluent, polluted water, wastewater or sewage where such facilities have a daily throughput capacity of 2 000 cubic metres or less; or</i> <i>(iv) where the development is directly related to aquaculture facilities or infrastructure where the wastewater discharge capacity will not exceed 50 cubic metres per day.</i> 	Construction
Listing Notice 2 Activity 7	38(1)(e)	<p><i>The development and related operation of facilities or infrastructure for the bulk transportation of dangerous goods—</i></p> <ul style="list-style-type: none"> <i>(i) in gas form, outside an industrial complex, using pipelines, exceeding 1 000 metres in length, with a throughput capacity of more than 700 tons per day;</i> <i>(ii) in liquid form, outside an industrial complex, using pipelines, exceeding 1 000 metres in length, with a throughput capacity of more than 50 cubic metres per day; or</i> <i>(iii) in solid form, outside an industrial complex, using funiculars or conveyors with a throughput capacity of more than 50 tons per day.</i> 	Construction Operation
Listing Notice 2 Activity 12	38(1)(e)	<p><i>The development of railway lines, stations or shunting yards excluding —</i></p> <ul style="list-style-type: none"> <i>(i) railway lines, shunting yards and railway stations in industrial complexes or zones;</i> <i>(ii) underground railway lines in a mining area; or</i> <i>(iii) additional railway lines within the railway line reserve.</i> 	Construction

NEMA Activity	NHRA Trigger	Description	Expected duration/phase
Listing Notice 2 Activity 15	38(1)(e)	<p><i>The clearance of an area of 20 hectares or more of indigenous vegetation, excluding where such clearance of indigenous vegetation is required for—</i></p> <p><i>(i) the undertaking of a linear activity; or</i></p> <p><i>(ii) maintenance purposes undertaken in accordance with a maintenance management plan.</i></p>	Construction
Listing Notice 2 Activity 17	38(1)(e)	<p><i>Any activity including the operation of that activity which requires a mining right as contemplated in section 22 of the Mineral and Petroleum Resources Development Act, 2002 (Act No. 28 of 2002), including—</i></p> <p><i>(a) associated infrastructure, structures and earthworks, directly related to the extraction of a mineral resource; or</i></p> <p><i>(b) the primary processing of a mineral resource including winning, extraction, classifying, concentrating, crushing, screening or washing;</i></p> <p><i>but excluding the secondary processing of a mineral resource, including the smelting, beneficiation, reduction, refining, calcining or gasification of the mineral resource in which case activity 6 in this Notice applies.</i></p>	Construction

NEMA Activity	NHRA Trigger	Description	Expected duration/phase
Listing Notice 3 Activity 4	38(1)(a) 38(1)(e)	<p><i>The development of a road wider than 4 metres with a reserve less than 13,5 metres.</i></p> <p><u>e. Limpopo</u></p> <p><i>i. Outside urban areas:</i></p> <p><i>(aa) A protected area identified in terms of NEMPAA, excluding disturbed areas;</i></p> <p><i>(bb) National Protected Area Expansion Strategy Focus areas;</i></p> <p><i>(cc) Sensitive areas as identified in an environmental management framework as contemplated in chapter 5 of the Act and as adopted by the competent authority;</i></p> <p><i>(dd) Sites or areas identified in terms of an international convention;</i></p> <p><i>(ee) Critical biodiversity areas as identified in systematic biodiversity plans adopted by the competent authority or in bioregional plans;</i></p> <p><i>(ff) Core areas in biosphere reserves; or</i></p> <p><i>(gg) Areas within 10 kilometres from national parks or world heritage sites or 5 kilometres from any other protected area identified in terms of NEMPAA or from the core areas of a biosphere reserve, excluding disturbed areas; or</i></p> <p><i>ii. Inside urban areas:</i></p> <p><i>(aa) Areas zoned for use as public open space;</i></p> <p><i>(bb) Areas designated for conservation use in Spatial Development Frameworks adopted by the competent authority or zoned for a conservation purpose; or</i></p> <p><i>(cc) Areas within urban protected areas.</i></p>	Construction

NEMA Activity	NHRA Trigger	Description	Expected duration/phase
Listing Notice 3 Activity 10	38(1)(e)	<p><i>The development and related operation of facilities or infrastructure for the storage, or storage and handling of a dangerous good, where such storage occurs in containers with a combined capacity of 30 but not exceeding 80 cubic metres.</i></p> <p><u>e. Limpopo</u></p> <p><i>i. All areas.</i></p>	Construction Operation
Listing Notice 3 Activity 12	38(1)(e)	<p><i>The clearance of an area of 300 square metres or more of indigenous vegetation except where such clearance of indigenous vegetation is required for maintenance purposes undertaken in accordance with a maintenance management plan.</i></p> <p><u>e. Limpopo</u></p> <p><i>i. Within any critically endangered or endangered ecosystem listed in terms of section 52 of the NEMBA or prior to the publication of such a list, within an area that has been identified as critically endangered in the National Spatial Biodiversity Assessment 2004;</i></p> <p><i>ii. Within critical biodiversity areas identified in bioregional plans; or</i></p> <p><i>iii. On land, where, at the time of the coming into effect of this Notice or thereafter such land was zoned open space, conservation or had an equivalent zoning.</i></p>	Construction

NEMA Activity	NHRA Trigger	Description	Expected duration/phase
Listing Notice 3 Activity 18	38(1)(a) 38(1)(e)	<p><i>The widening of a road by more than 4 metres, or the lengthening of a road by more than 1 kilometre.</i></p> <p><u>e. Limpopo</u></p> <p><i>i. Outside urban areas:</i></p> <p><i>(aa) A protected area identified in terms of NEMPAA, excluding conservancies;</i></p> <p><i>(bb) National Protected Area Expansion Strategy Focus areas;</i></p> <p><i>(cc) Sensitive areas as identified in an environmental management framework as contemplated in chapter 5 of the Act and as adopted by the competent authority;</i></p> <p><i>(dd) Sites or areas identified in terms of an international convention;</i></p> <p><i>(ee) Critical biodiversity areas as identified in systematic biodiversity plans adopted by the competent authority or in bioregional plans;</i></p> <p><i>(ff) Core areas in biosphere reserves;</i></p> <p><i>(gg) Areas within 10 kilometres from national parks or world heritage sites or 5 kilometres from any other protected area identified in terms of NEMPAA or from the core area of a biosphere reserve; or</i></p> <p><i>(hh) Areas within a watercourse; or within 100 metres from the edge of a watercourse; or</i></p> <p><i>ii. Inside urban areas:</i></p> <p><i>(aa) Areas zoned for use as public open space; or</i></p> <p><i>(bb) Areas designated for conservation use in Spatial Development Frameworks adopted by the competent authority or zoned for a conservation purpose.</i></p>	Construction

3.3 Identified and known heritage resources and potential impacts

Certain categories of heritage resource, if existing and identified, generally require heritage assessments to be completed before any development may take place. These categories may be formally or generally protected in terms of the NHRA. Table 6 presents an overview of such heritage resources identified within the Project area.

Table 6: Identified heritage resources in terms of Section 3 of the NHRA

	Section	Description
<input checked="" type="checkbox"/>	3(2)(a)	<p>Places, buildings, structures and equipment of cultural significance</p> <p>Description of resource: the historical built environment constitutes a portion of the cultural landscape. No such heritage resources have been identified within the Project area at this stage.</p> <p>Potential impact: None identified to date, but this must be assessed in the Impact Assessment phase following in-field assessment.</p>
<input type="checkbox"/>	3(2)(b)	<p>Places to which oral traditions are attached or which are associated with living heritage</p> <p>Description of resource: None identified</p> <p>Potential impact: None</p>
<input type="checkbox"/>	3(2)(c)	<p>Historical settlements and townscapes</p> <p>Description of resource: None identified</p> <p>Potential impact: None</p>
<input type="checkbox"/>	3(2)(d)	<p>Landscapes and natural features of cultural significance</p> <p>Description of resource: None identified</p> <p>Potential impact: None</p>
<input checked="" type="checkbox"/>	3(2)(e)	<p>Geological resources of scientific or cultural importance</p> <p>Description of resource: The Project area is underlain by geological strata of very high palaeosensitivity.</p> <p>Potential impact: The Project has potential to directly impact fossil heritage. This will be assessed in more detail in the Impact Assessment phase.</p>
<input checked="" type="checkbox"/>	3(2)(f)	<p>Archaeology and/or palaeontology (Including archaeological sites and material, fossils, rock art, battlefields & wrecks)</p> <p>Description of resource: Archaeological resources constitute a significant portion of the cultural landscape. No such heritage resources have been identified within the Project area at this stage.</p> <p>Potential impact: None identified to date, but this must be assessed in the Impact Assessment phase following in-field assessment.</p>



	Section	Description
<input checked="" type="checkbox"/>	3(2)(g)	Graves and burial grounds (e.g., ancestral graves, graves of victims of conflict, historical graves & cemeteries)
		Description of resource: Burial grounds and graves constitute a portion of the cultural landscape. No such heritage resources have been identified within the Project area at this stage.
		Potential impact: None identified to date, but this must be assessed in the Impact Assessment phase following in-field assessment.
<input type="checkbox"/>	3(2)(h)	Other human remains
		Description of resource: None identified
		Potential impact: None
<input type="checkbox"/>	3(2)(i)	Sites of significance relating to the history of slavery in South Africa
		Description of resource: None identified
		Potential impact: None
<input type="checkbox"/>	3(2)(j)	Movable objects
		Description of resource: None identified
		Potential impact: None

4 Recommendation

Table 7 presents a summary and motivation of the specialist recommendations.

Table 7: Specialist heritage recommendations

Is a Heritage Impact Assessment required?		<input checked="" type="checkbox"/> Yes	<input type="checkbox"/> No
If NO, provide motivation: Not applicable.			
If YES, provide suggested components that may be required or undertaken during HIA.			
<input checked="" type="checkbox"/>	Archaeology	<input type="checkbox"/>	Architecture
<input checked="" type="checkbox"/>	Built Environment	<input checked="" type="checkbox"/>	Burial Grounds and Graves
<input checked="" type="checkbox"/>	Palaeontology	<input type="checkbox"/>	Public Participation
<input type="checkbox"/>	Townscapes	<input type="checkbox"/>	Visual Impact
<input type="checkbox"/>	Other:		
Recommendation made by:			
Name: Shannon Hardwick		Name: Justin du Piesanie	
Capacity: HRM Consultant		Capacity: Divisional Manager: Social and Heritage Services	