

**Exemption Letter – The Proposed Samancor Application for Mining Right, Environmental Authorisation, Waste Management Licence and Water Use Licence on Varkensvlei 403 KQ in the Bojanala District Municipality, Moses Katane Local Municipality in the Limpopo Province.**

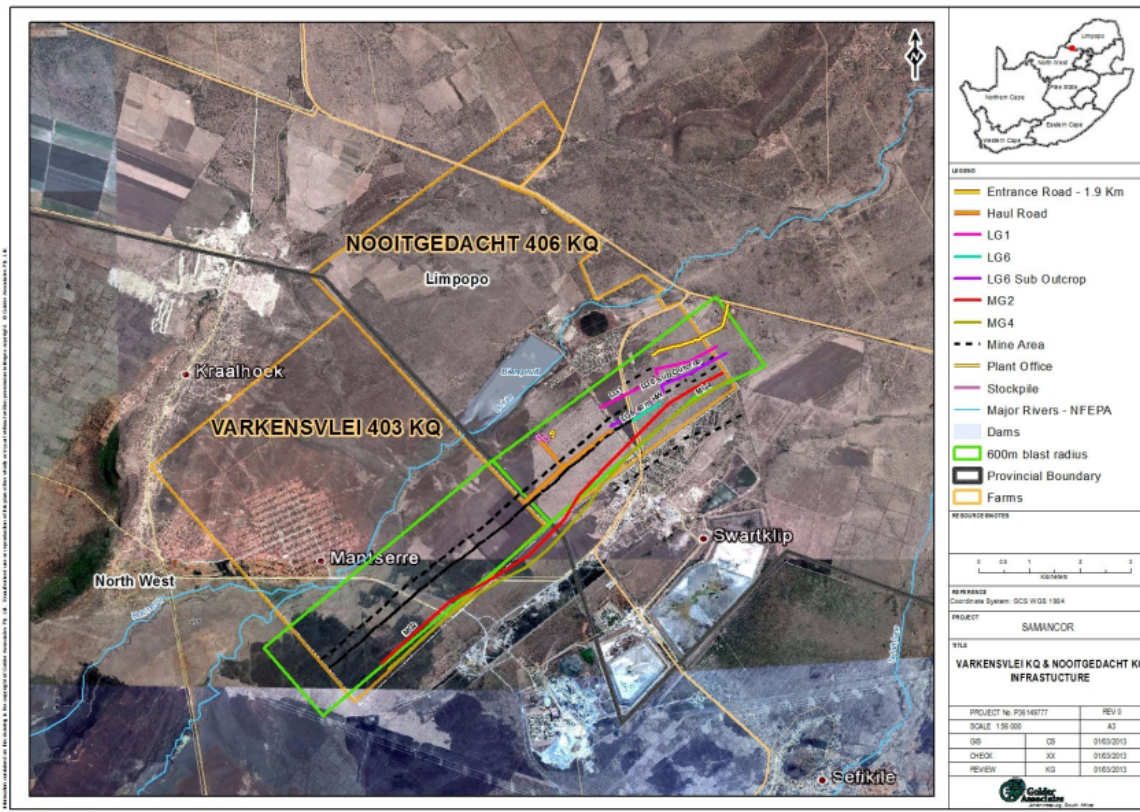
**CaseID: 10658 - Ammended**

Dr Heidi Fourie – Palaeontologist  
2017/07/09

Samancor Chrome holds the prospecting rights on the Farm Varkensvlei 403 KQ, and has applied for a mining right with the intention of mining the LG6 and LG6A chromitite seams by opencast and underground methods over an area of 822 hectares in the Waterberg District Municipality in the Limpopo Province. Surface infrastructure, roads and servitudes will involve an additional area of 26 ha.

The life of mine will be approximately 30 years. A beneficiation plant will be located on Varkensvlei 403 KQ.

**Locality Map (Golder Associates)**



**Recommendation**

This letter serves as a Letter of Exemption. The development will be located on a Formation with a Very Low Palaeontological sensitivity, therefore there is a very low possibility that significant fossils will be present in the bedrock of these geological units. The rock units are associated with intrusive igneous activities and no life would have been possible during emplacement of the rocks (\*Groenewald and Groenewald 2014).

## Geology of the area (Golder Associates)

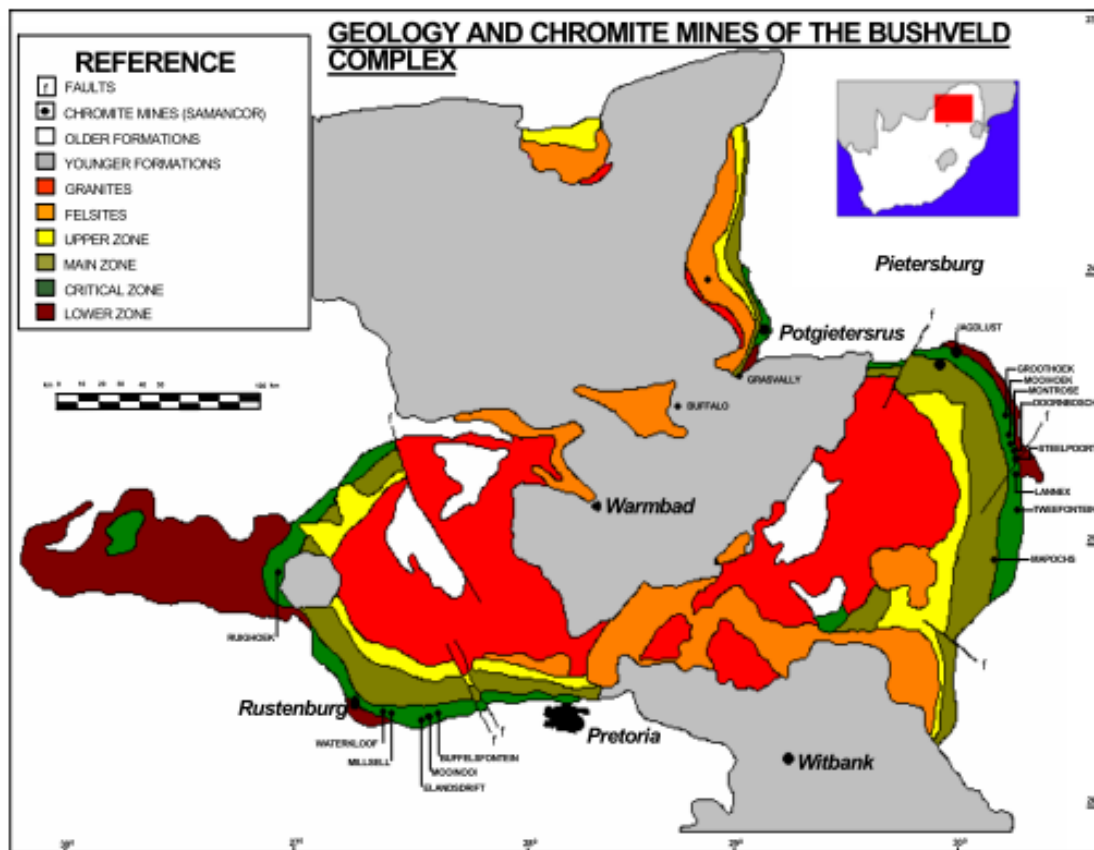
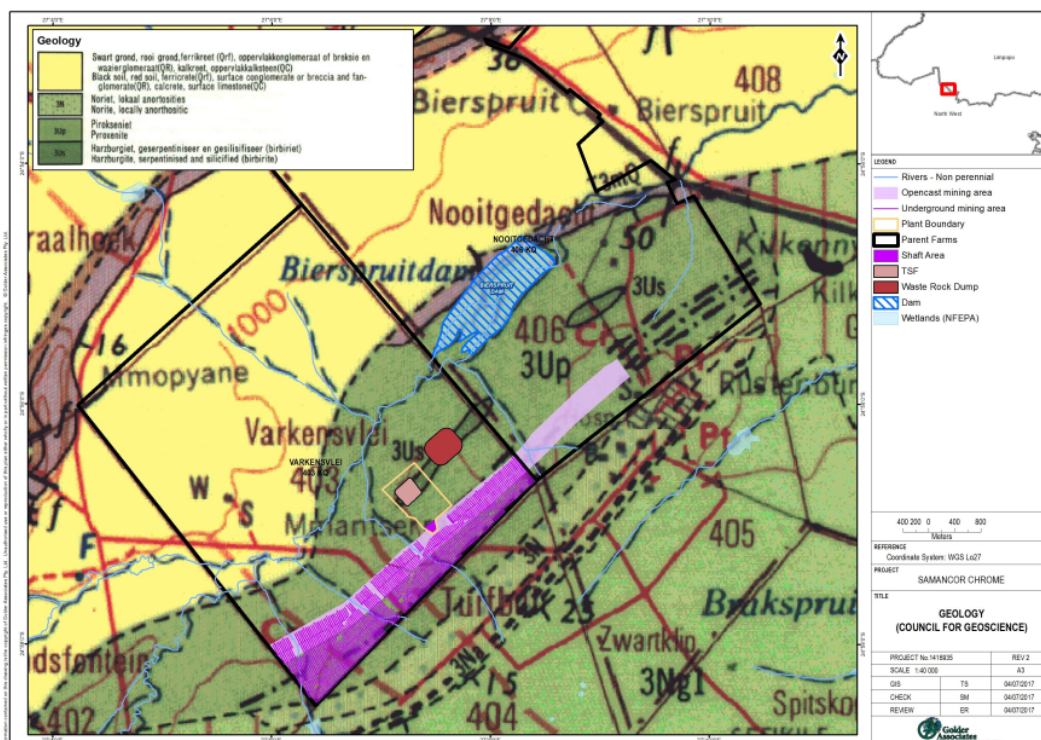


Figure 4-1: Geological features of the Bushveld Complex

The Bushveld Complex is Vaalian in age with a small section Late Mokolian in age.

## Footprint of development (Golder Associates)



The proposed development and associated structures will be situated on the Rustenburg Layered Suite of the Bushveld Complex. It is Vaalian in age (2,100 – 1,920 Ma) and consists of an igneous intrusion with anorthosite, hybrid gabbro, gabbro, diabase, epidiorite, pyroxenite, and norite rocks. The Bushveld Complex is a massive body of igneous origin and it is intrusive in the Transvaal Supergroup. Both mafic and ultramafic rocks are present in the Rustenburg Layered Suite. The site is covered in 'Bushveld' vegetation and the weathering product is known as 'black turf' (Kent, 1980; Visser, 1989). There is a presence of mining past and present.

The proposed mining area will be situated on the Lower-, Critical- and Main Zones of the Bushveld Complex, mainly the Lower Zone of the Ruighoek Pyroxenite, Rustenburg Layered Suite of the Bushveld Complex. Surface alluvium (Cenozoic deposits of the interior) is not present.

\*Groenewald, G. and Groenewald, D., 2014. SAHRA Palaeotechnical Report : Palaeontological Heritage of the North West Province. South African Heritage Resources Agency.

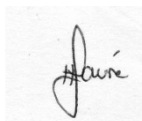
**Declaration / Disclaimer (1b)**

I, Heidi Fourie, declare that I am an independent consultant and have no business, financial, personal or other interest in the proposed development project for which I was appointed to do a palaeontological assessment. There are no circumstances that compromise the objectivity of me performing such work.

I accept no liability, and the client, by receiving this document, indemnifies me against all actions, claims, demands, losses, liabilities, costs, damages and expenses arising from or in connection with services rendered, directly or indirectly by the use of the information contained in this document.

It may be possible that the Exemption Letter may have missed palaeontological resources in the Project Area as the presence of outcrops are not known and may only be found once development commences.

This report may not be altered in any way and any parts drawn from this report must make reference to this report.



---

Dr H. Fourie