

17 July 2023

Ref: 728HIA-002

TerraManzi Group (Pty) Ltd  
13 Old Cape Farm Road,  
Crofters Valley,  
Noordhoek,  
7975

**Attention: Tarryn Frankland****EMPR AMENDMENT APPLICATIONS FOR THE APPROVED VIRGINIA 2 SOLAR PV PARK - DFFE  
REF: 14/12/16/3/3/2/2100 (dated 20 May 2022) – HERITAGE SPECIALIST OPINION****1. INTRODUCTION**

PGS Heritage (Pty) Ltd (PGS), a heritage specialist consultancy, was requested to evaluate the proposed update of the approved layout to the Virginia 2 Solar PV Park - DFFE Ref: 14/12/16/3/3/2/2100 (dated 20 May 2022) as well as the Environmental Management Plan Report (EMPR). The original Archaeological Impact Assessment (AIA), was completed by Exigo Sustainability for Ages Limpopo, in 2021, while the EMPR was completed by the TerraManzi Group (2021).

**2. PROJECT DESCRIPTION**

The Virginia 2 Solar Park, was issued with an Environmental Authorisation (EA) on 20 May 2022 (DFFE Reference No.: 14/12/16/3/3/2/2100).

**3. ANY NEW GUIDELINES/ PROTOCOLS**

None

**4. CURRENT BASELINE HERITAGE STATUS**

Since the original assessment, the baseline heritage environment has remained the same. Findings relating to cultural heritage (2021) for the project are still applicable as no additional development was completed.

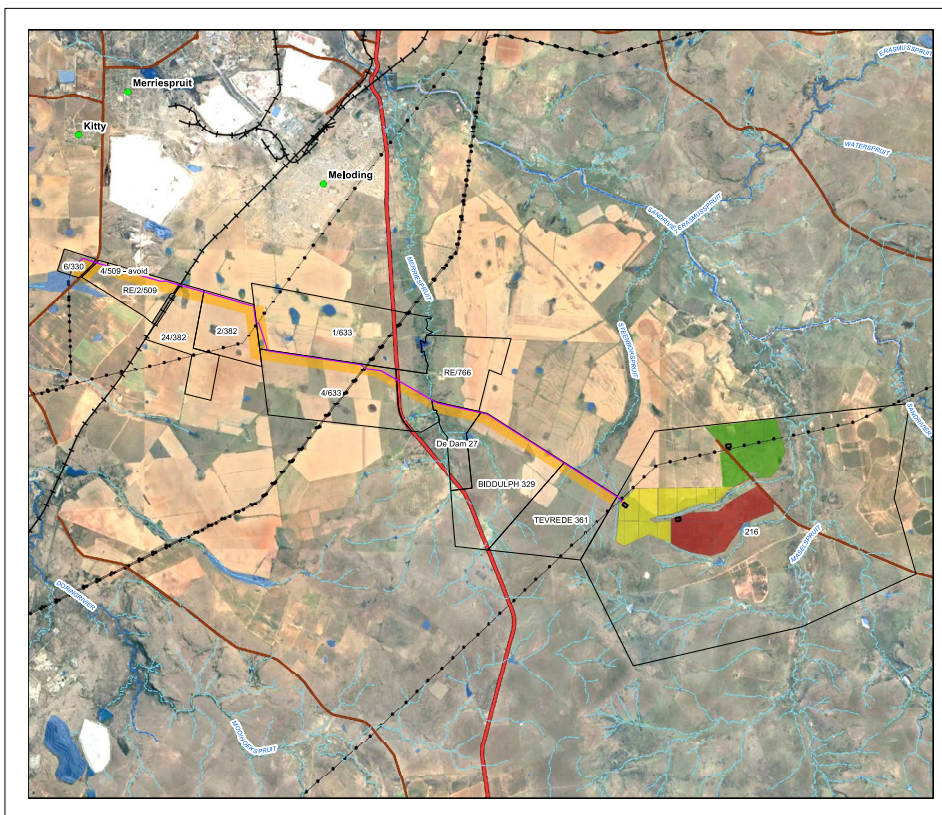


Figure 1 - Locality and layout of the Red Rocket Virginia SEF Suite of projects

## 5. PROPOSED CHANGES

The scope of the specialist evaluation was to consider:

- Remove the 132kV substation from the Virginia 2 PVSEF.
- Update the Generic Substation EMPR and ensure all specialist recommendations are included

## 6. SPECIALIST COMMENT

Our evaluation of the original AIA (2021) and the EMPR indicates that the receiving cultural heritage environment will not experience a change in the original impact rating. The following general observations:

- No archaeological resources were identified during the original HIA within the PV2 development area.
- The changes to the layout amount to removing the approved 132kV substation within the footprint of the Virginia 2 PVSEF.

The following management recommendations in the AIA and EMPR are listed in **Table 1**.

Table 1 – Heritage resources Management recommendations contained in the original reports

| AIA Report  | EMPR   |
|---|--|
| <p>Considering the localised nature of heritage remains, the general monitoring of the development progress by an ECO or by the heritage specialist is recommended for all stages of the project. Should any subsurface palaeontological, archaeological or historical material, or burials be exposed during construction activities, all activities should be suspended and the archaeological specialist should be notified immediately.</p> <p>It should be stated that it is likely that further undetected archaeological remains might occur elsewhere in the Study Area along water sources and drainage lines, fountains and pans would often have attracted human activity in the past. Also, since Stone Age material seems to originate from below present soil surfaces in eroded areas, the larger landscape should be regarded as potentially sensitive in terms of possible subsurface deposits. Burials and historically significant structures dating to the Colonial Period occur on farms in the area and these resources should be avoided during all phases of construction and development, including the operational phases of the development.</p> <p><b>Site Monitoring:</b> Site monitoring by the heritage consultant or an ECO familiar with the heritage occurrences of the site.</p> | <p><b>Earthworks and excavations (Construction)</b></p> <ul style="list-style-type: none"> <li>• Before construction commences an archaeologist must be appointed to do a final walk over survey to confirm that there are no archaeological finds and or areas of archaeological significance on site.</li> <li>• Halt construction and notify the archaeologist or SAHRA whenever anything of potential heritage value is discovered.</li> <li>• The area should be cordoned off and no access should be allowed to the site until the archaeologist has indicated that it is in order to do so.</li> </ul> <p><b>Earthworks and excavations (Decommissioning)</b></p> <ul style="list-style-type: none"> <li>• Halt construction and notify the archaeologist or SAHRA whenever anything of potential heritage value is discovered.</li> <li>• Halt decommissioning and notify the archaeologist or SAHRA whenever anything of potential heritage value is discovered.</li> </ul> |

## 7. CONCLUSION

We have assessed the recommendations in the AIA as well as the EMPR. The recommendations will address any potential impact on archaeological heritage resources that can emanate from the project and the proposed change in the layout.

Any enquiries can be submitted to Wouter Fourie at [wouter@pgsheritage.com](mailto:wouter@pgsheritage.com).



Wouter Fourie

*Accredited Professional Heritage Practitioner (APHP), Accredited Professional Archaeologist (ASAPA)*

**Director – PGS Heritage**

## **APPENDICES**

**Appendix 1:** Specialists declaration of Interest (signed by a Commissioner of Oaths)

**Appendix 2:** Specialist CVs

## **Reference**

Kruger, N. 2021. Archaeological Impact Assessment for the proposed Virginia 1, 2 & 3 Solar Parks EIA Project on Portions of the Farm Blomskraal 216 in the Lejweleputswa District Municipality of the Free State Province. Exigo Sustainability

**Appendix 1: Specialists declaration of Interest (signed by a Commissioner of Oaths)**

## Appendix 2: Specialist CVs



# WOUTER FOURIE

Professional Heritage Practitioner

### PROFILE

I am involved in heritage resources management for the past 20 years acting as a specialist consultant on various high-profile projects involving heritage and archaeology. I aim to develop tailor-made heritage solutions to the mining, water and oil and gas industries. I have worked in various African countries, including South Africa, Lesotho, Mozambique, Mauritius, Malawi and the DRC.

I thrive on developing and implementing heritage projects in new territories and with these securing local partnerships that enable skill development for local graduates.

### CONTACT

PHONE NUMBER:  
+27 82 851 3575  
+258 84 774 6768

WEBSITE:  
[www.pgsheritage.com](http://www.pgsheritage.com)

EMAIL ADDRESS:  
[wouter@pgsheritage.com](mailto:wouter@pgsheritage.com)



## EDUCATION

### University of Pretoria

1993-1996

BA Degree - Majors in Archaeology, Anthropology and Geography

### University of Pretoria

1997

BA Hon Archaeology, with further specialisation in environmental management.

### University of Cape Town

2016 - present

MPhil Conservation of the Built Environment

## WORK EXPERIENCE

### PGS Heritage Group of Companies - Director - Heritage Specialist

2003- present

I am actively involved in the management of the business and focus on marketing and new business for PGS, specifically the broader SADC region. Acting as heritage specialist in multidisciplinary teams

### The University of the Witwatersrand - Project Manager - Archaeological Contracts Unit

2007-2008

Responsible for conducting heritage and archaeological impact studies, archaeological excavations and general management of the unit

### Matakoma Consultants - Director - Heritage Specialist

2000 - 2008

Heritage specialist and Director responsible for heritage and archaeological impact studies

### Randfontein Estate Gold Mine - Environmental Coordinator

Oct 1998- Feb 2000

Coordinating all environmental Rehabilitation work

### Department of Minerals and Energy Environmental Officer

Oct 1997 - Sept 1998

## PROFESSIONAL AFFILIATION

### Accredited Professional Heritage Practitioner

Association of Professional Heritage Practitioners

Since 2014

### Accredited Professional Archaeologist

Association of Southern African Professional Archaeologists -

Since 2001