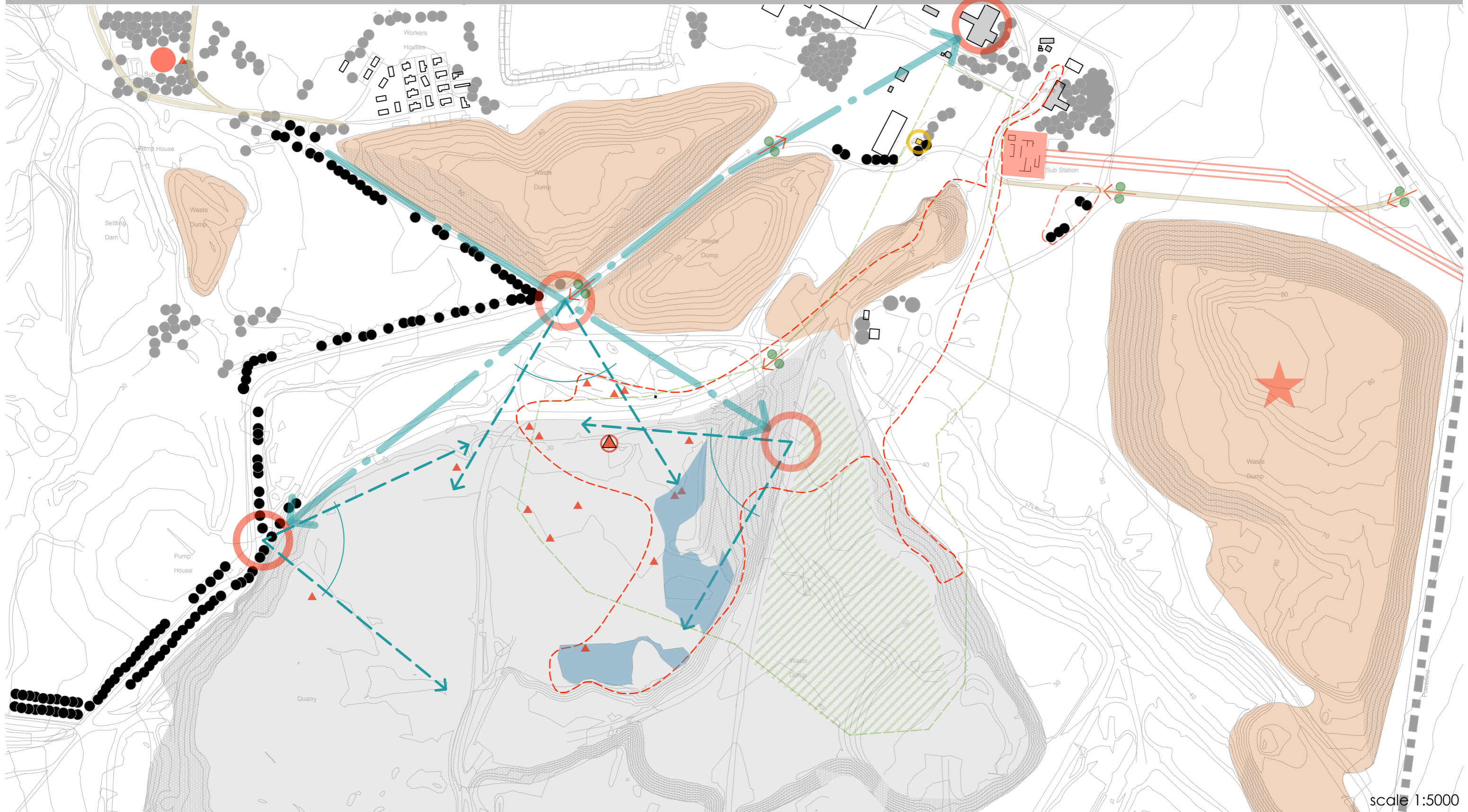


# DIAGRAM 03A

Heritage-Related Constraints and Opportunities for Future Development & Site Interpretation

- historic farm road alignment pre-dating mining operations on the property
- site of some industrial archaeological significance
- visual intrusion
- landmark
- site of farmhouse pre-dating mining operations on the property
- site of some associative historical mining significance
- noteworthy known archaeological/palaeo sites beyond the dig area
- palaeontological dig area (refer Diagram 2 for close-up of individual sites)



scale 1:5000

- wetland area: of ecological rather than botanical sensitivity
- primary place-defining trees
- place-defining landform (including 2m contours)
- spatial threshold
- edge defining an area of low-med biophysical sensitivity within and adjacent to Precinct 1
- secondary place-defining trees
- place-defining landform face (including 2m contours)
- channelled views
- area of medium biophysical sensitivity (no areas of high sensitivity identified)
- place-defining vista
- place-defining excavated area ('E' Quarry) (including 2m contours)
- focal opportunity

MELANIE ATTWELL & ASSOCIATES  
 Heritage Baseline Study: West Coast Fossil Park: Farm 1223  
 Saldanha Bay, 29 August 2012  
 Tel: 021 715 0330/Cell: 082 771 6286

