

**Phase 1 Archaeological Impact Assessment
Portion 5, Farm Kamaggas No.200
Proposed Nama Khoi Cemetary**

**APPENDIX A
STONE TOOLS**

2001-02-15

Pro-Active Archaeology

Dr Liezl van Pletzen-Vos
083 2785 125
liezlvpv@gmail.com

PostNet Suite 168
Private Bag X15
Somerset West
7129

Dr Reneé Rust
021 844 0949
rrust@sanggic.co.za

ALTERNATIVE 1 – LITHICS



Material: Quartz
Typology: MSA flake
GPS mark: 117
Co-ordinates: -29.80198 17.465286
ASL: 270.73m
N= 1



Material: Quartz
Typology: MSA flake
GPS mark: 119
Co-ordinates: -29.800927 17.467136
ASL: 278.67m
N=3



Material: Quartz
Typology: MSA flake
GPS mark: 120
Co-ordinates: -29.800811 17.466658
ASL: 277.94m
N= 3



Material: Quartz
Typology: MSA flake
GPS mark: 121
Co-ordinates: -29.800423 17.465854
ASL: 275.78m
N=3



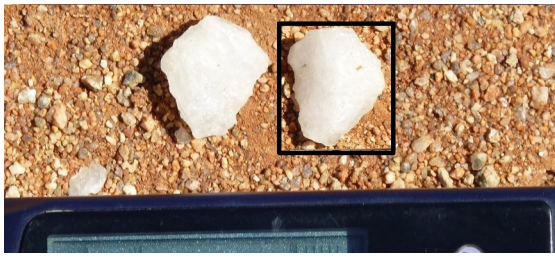
Material: Quartz
Typology: MSA flake
GPS mark: 122
Co-ordinates: -29.799684 17.466222
ASL: 280.11m
N=3



Material: Quartz
Typology: MSA flake
GPS mark: 123
Co-ordinates: -29.799488 17.465234
ASL: 270.49
N=5



Material: Quartz
Typology: MSA flake
Co-ordinates: 29°48.086'S 17°28.082'E
ASL:
N=1



Material: Quartz
Typology: MSA flake
Co-ordinates: 29°48.114'S 17°27.883'E
ASL:
N=1



Material: Quartz
Typology: MSA flake
Co-ordinates: 29°48.082'S 17°27.902'E
ASL:
N=1



Material: Quartz
Typology: MSA flake
Co-ordinates: 29°48.107'S 17°27.925'E
ASL:
N=1

ALTERNATIVE 2 – LITHICS



Material: Quartz
Typology: MSA flake
GPS mark: 112
Co-ordinates: -29.791817 17.474244
ASL: 280.35m
N=1



Material:
Typology: MSA flake
GPS mark: 113
Co-ordinates: -29.792073 17.473952
ASL: 274.34m
N=2



Material: Quartz
Typology: MSA flake
GPS mark:
Co-ordinates:
ASL:
N=3



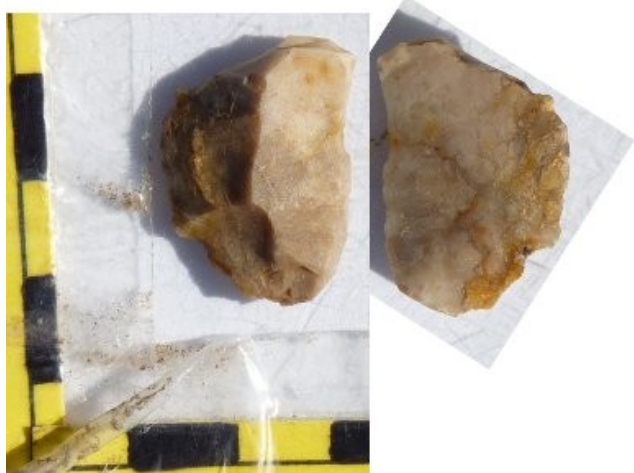
Material:
Typology: MSA flake
GPS mark: 114
Co-ordinates: -29.792603 17.473583
ASL: 277.70m
N=3



Material: Quartz
Typology: MSA flake
GPS mark: 115
Co-ordinates: -29.792966 17.475450
ASL: 275.78m
N=2



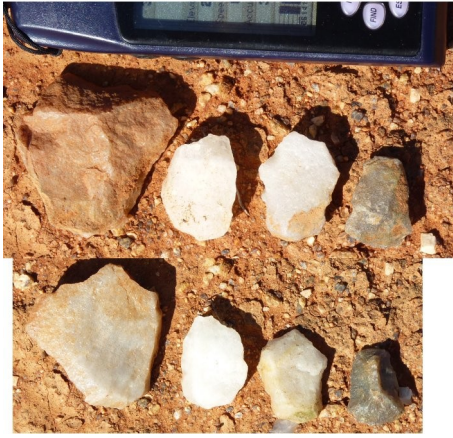
Material: Quartz
Typology: MSA flake
Co-ordinates: 29°47.527'S 17°28.499'E
ASL: 281
N=2



Material: Silcrete
Typology: MSA flake
Co-ordinates: 29°47.523'S 17°28.499'E
ASL: 281
N=1



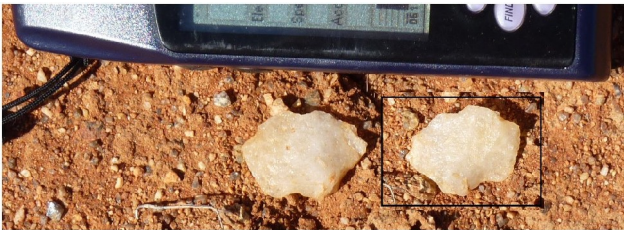
Material: Quartz
Typology: MSA Core
Co-ordinates: 29°47.511'S 17°28.477'E
ASL: 281m
N=1



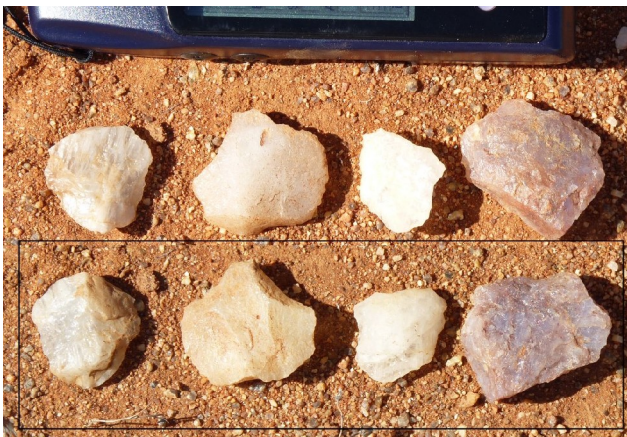
Material: Quartz
Typology: MSA flake
Co-ordinates: 29°47.509'S 17°28.456 'E
ASL: 278m
N=4



Material: Quartz
Typology: MSA flake
Co-ordinates: 29°47.534'S 17°28.454'E
ASL: 276m
N=3



Material: Quartz
Typology: MSA flake
Co-ordinates: 29°47.539'S 17°28.452'E
ASL: 275m
N=1



Material: Quartz
Typology: MSA flake
Co-ordinates: 29°47.540'S 17°28.454'E
ASL: 276m
N=4



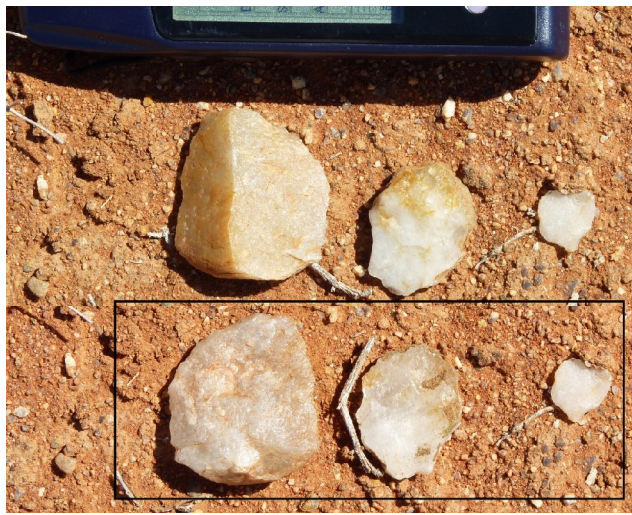
Material: Quartz
Typology: MSA flake & core
Co-ordinates: 29°47.551'S 17°28.460'E
ASL: 276m
N=2



Material: Quartz
Typology: MSA flake
Co-ordinates: 28°47.588'S 17°28.465'E
ASL: 274m
N=2



Material: Quartz
Typology: MSA flake
Co-ordinates: 28°47.593'S 17°28.491'E
ASL: 274m
N=4



Material: Quartz
Typology: MSA flake
Co-ordinates: 29°47.608'S 17°28.512'E
ASL: 273m
N=3



Material: Quartz
Typology: MSA flake
Co-ordinates: 29°47.610'S 17°28.516'E
ASL: 270
N=1