

**A LETTER OF EXEMPTION FOR EMONDLO RETAIL
CENTRE, EMONDLO, KZN**

FOR KMC ENVIRONMENTAL

DATE: 13 DECEMBER 2020

By Gavin Anderson

**Umlando: Archaeological Surveys and Heritage
Management**

PO Box 10153, Meerensee, 3901

Phone: 035-7531785 Cell: 0836585362

umlando@gmail.com



Abbreviations

HP	Historical Period
IIA	Indeterminate Iron Age
LIA	Late Iron Age
EIA	Early Iron Age
ISA	Indeterminate Stone Age
ESA	Early Stone Age
MSA	Middle Stone Age
LSA	Late Stone Age
HIA	Heritage Impact Assessment
PIA	Palaeontological Impact Assessment

DRAFT

INTRODUCTION

Ithala development finance corporation intends to develop a new retail centre on the corner of Main Street and Duma Street in eMondlo, KwaZulu-Natal. The development footprint for the retail centre is 8371,86 sq meters. The development will also include a taxi/bus rank spanning 405,54 sq. meters, a traders market spanning 177,50 sq. meters and ablution facilities spanning 96,37 sq. meters. The development footprint in totality will be 9051,27 sq. meters.

All reticulation infrastructure will tie into the existing water and sewage infrastructure in the area. The roads will be standard one (1) lane (one way) - 6m wide roads and two (2) lane roads in both directions at +/- 8m. The roads will be constructed in line with the standards of the Department of transport. The design proposal of the of the retail centre is in line with the norms and standards for retail centres

Umlando was requested to assist in the HIA and suggested that it be exempt from further HIA. Figures 1 – 4 show the location of the site.

The development did not require an EIA and EDTEA has accept the project development. This is uploaded onto SAHRIS

FIG. 1 GENERAL LOCATION OF THE STUDY AREA

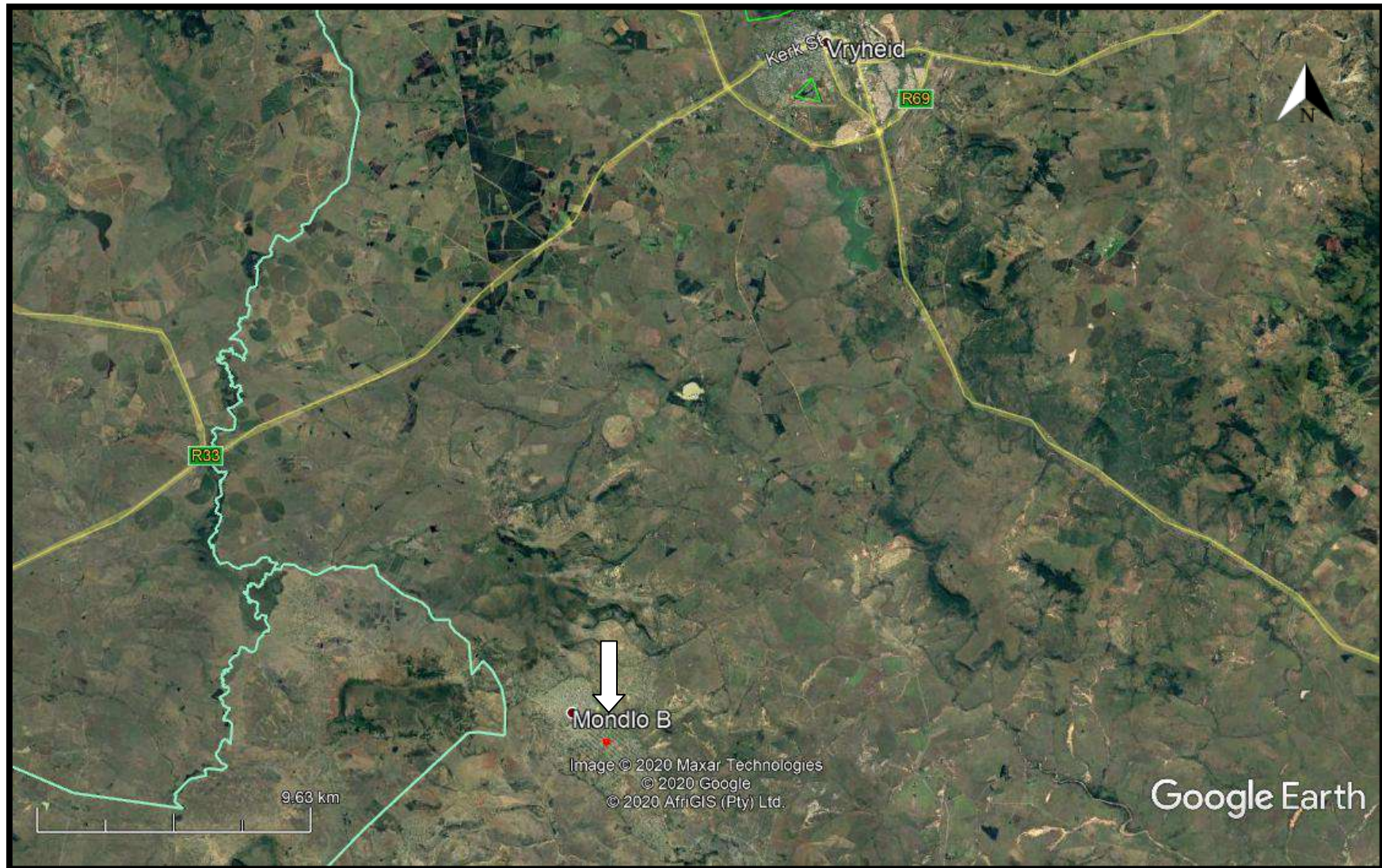


FIG. 2: AERIAL OVERVIEW OF THE STUDY AREA



FIG. 3: TOPOGRAPHICAL OVERVIEW OF THE EASTERN STUDY AREA (1996)



FIG. 4; SCENIC VIEWS OF THE SITE

DRAFT

The desktop study consisted of analysing various maps for evidence of prior habitation in the study area, as well as for previous archaeological surveys. The archaeological database indicates that there are archaeological sites in the general area. These sites include all types of Stone Age and Iron Age sites. No sites occur in the study area. The high density of development in the area has resulted in any archaeological sites being destroyed.

No national monuments, battlefields, or historical cemeteries are known to occur in the study area (fig. 5).

The 1953 map indicates that the area was agricultural land (fig. 6).

The study area is of very high palaeontological sensitivity; however, this is now very disturbed.

The Google Earth imagery shows that the area is highly disturbed and will not have any heritage sites. The development requires no further heritage mitigation and should be exempt from heritage mitigation.

FIG. 5: LOCATION OF KNOWN HERITAGE SITES NEAR THE STUDY AREA

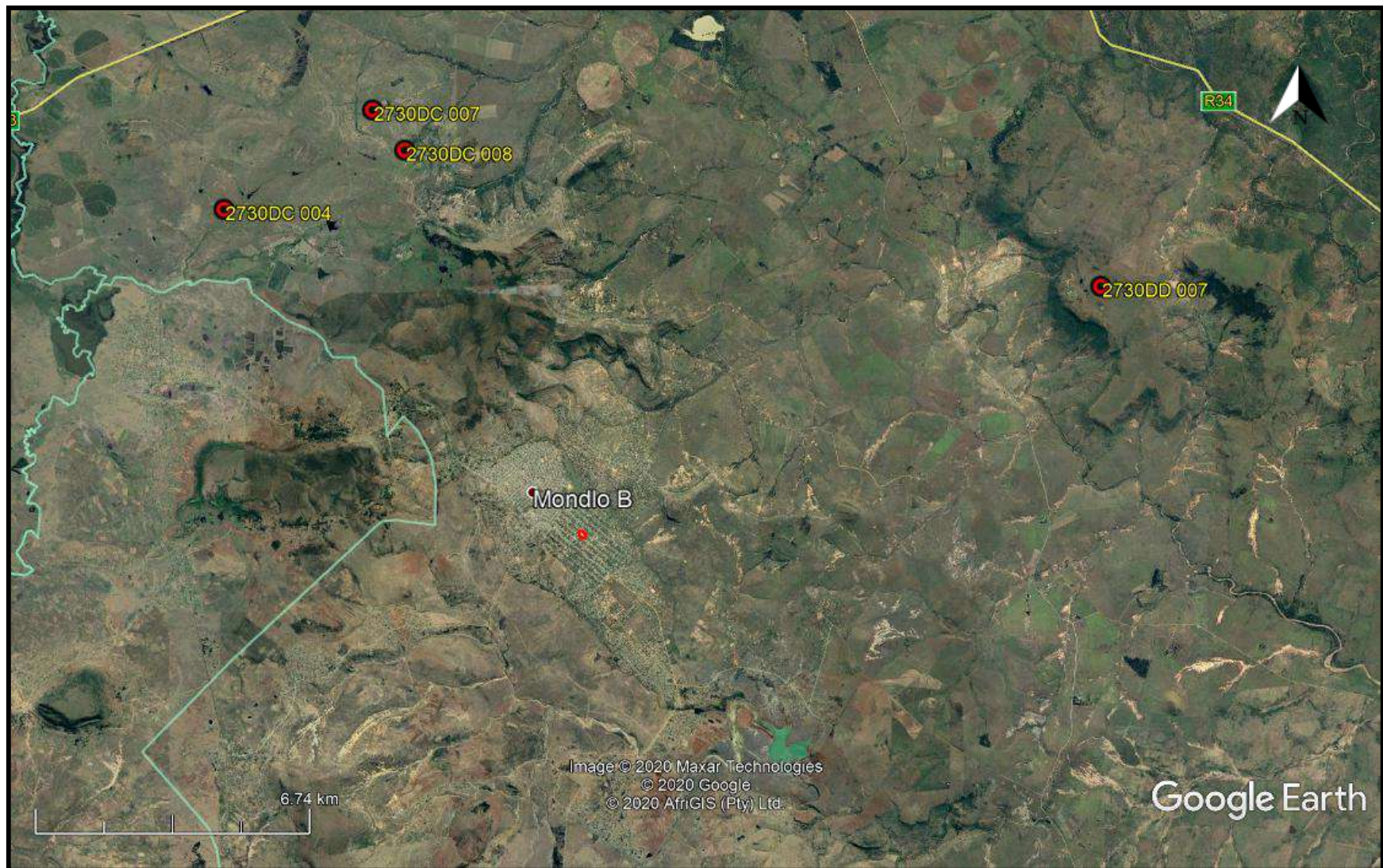


FIG. 6: STUDY AREA IN 1953

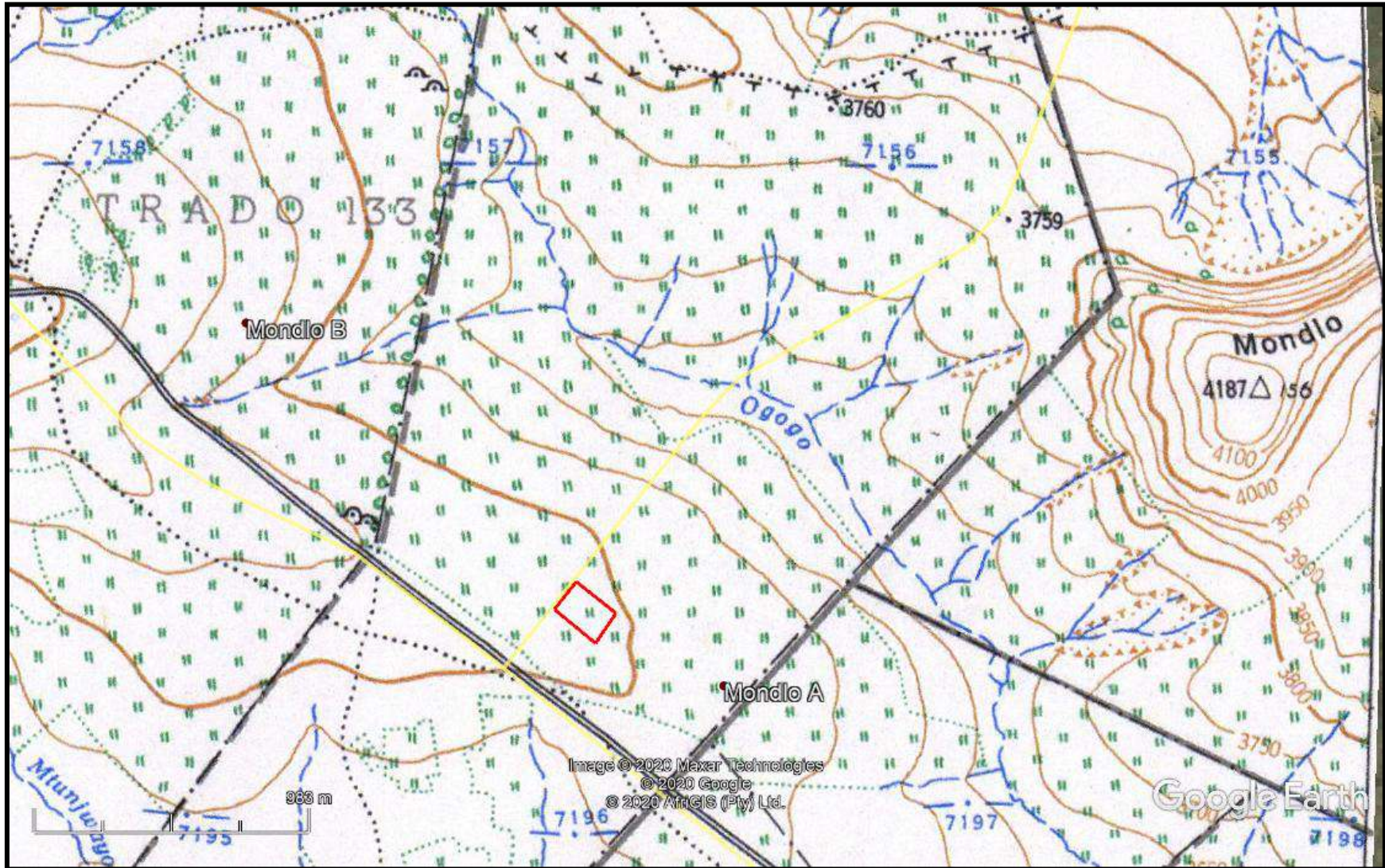
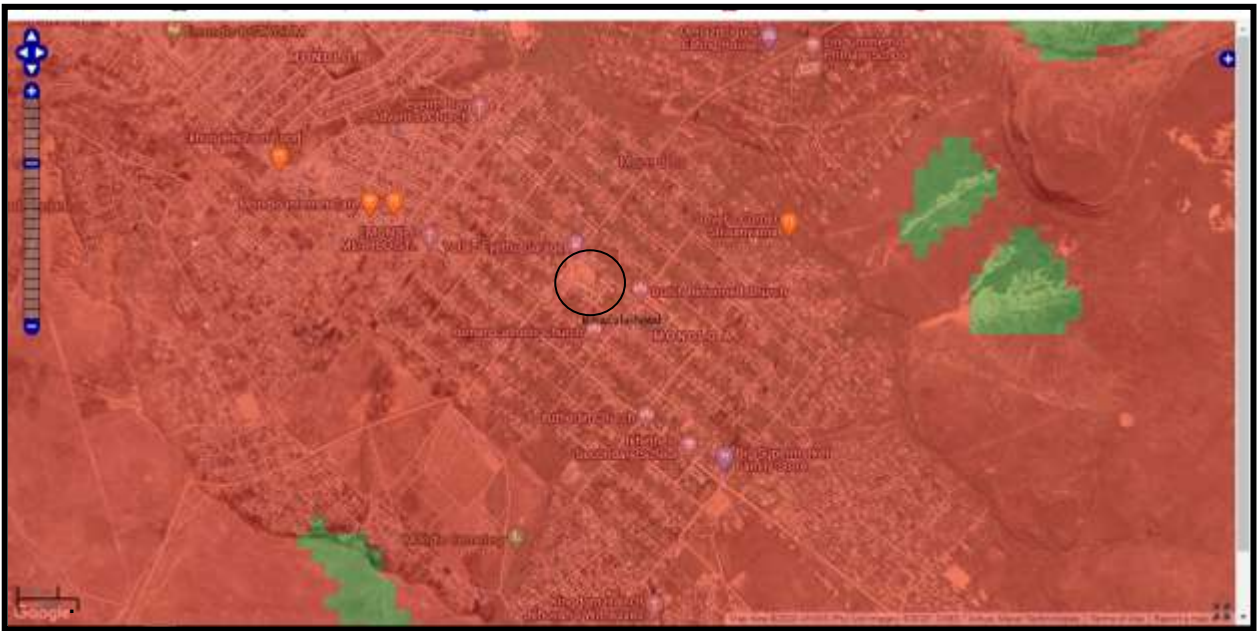


FIG. 7: PALAEOANTHROPOLOGICAL SENSITIVITY MAP



COLOUR	SENSITIVITY	REQUIRED ACTION
RED	VERY HIGH	field assessment and protocol for finds is required
ORANGE/YELLOW	HIGH	desktop study is required and based on the outcome of the desktop study, a field assessment is likely
GREEN	MODERATE	desktop study is required
BLUE	LOW	no palaeontological studies are required however a protocol for finds is required
GREY	INSIGNIFICANT/ZERO	no palaeontological studies are required
WHITE/CLEAR	UNKNOWN	these areas will require a minimum of a desktop study. As more information comes to light, SAHRA will continue to populate the map.

EXPERIENCE OF THE HERITAGE CONSULTANT

Gavin Anderson has a M. Phil (in archaeology and social psychology) degree from the University of Cape Town. Gavin has been working as a professional archaeologist and heritage impact assessor since 1995. He joined the Association of Professional Archaeologists of Southern Africa in 1998 when it was formed. Gavin is rated as a Principle Investigator with expertise status in Rock Art, Stone Age and Iron Age studies. In addition to this, he was worked on both West and East Coast shell middens, Anglo-Boer War sites, and Historical Period sites.

DECLARATION OF INDEPENDENCE

I, Gavin Anderson, declare that I am an independent specialist consultant and have no financial, personal or other interest in the proposed development, nor the developers or any of their subsidiaries, apart from fair remuneration for work performed in the delivery of heritage assessment services. There are no circumstances that compromise the objectivity of my performing such work.



Gavin Anderson
Archaeologist/Heritage Impact Assessor