

**PHASE ONE HERITAGE IMPACT ASSESSMENT
OF THE PROPOSED ITHALA MADADENI
INDUSTRIAL ECONOMIC HUB, AMAJUBA
MUNICIPALITY, KZN.**



ACTIVE HERITAGE cc.

For: BVI

**Frans Prins
MA (Archaeology)
P.O. Box 947
Howick
3290**

feprins@gmail.com
activeheritage@gmail.com
www.activeheritage.webs.com
Fax: 086 7636380

18 April 2020

Details and experience of independent Heritage Impact Assessment Consultant

Consultant: Frans Prins (Active Heritage cc)
Contact person: Frans Prins
Physical address: 33 Buchanan Street, Howick, 3290
Postal address: P O Box 947, Howick, 3290
Telephone: +27 033 3307729
Mobile: +27 0834739657
Fax: 0867636380
Email: Activeheritage@gmail.com

PhD candidate (Anthropology) University of KwaZulu-Natal
MA (Archaeology) University of Stellenbosch 1991
Hons (Archaeology) University of Stellenbosch 1989

University of KwaZulu-Natal, Honorary Lecturer (School of Anthropology, Gender and Historical Studies).

Association of Southern African Professional Archaeologists member

Frans received his MA (Archaeology) from the University of Stellenbosch and is presently a PhD candidate on social anthropology at Rhodes University. His PhD research topic deals with indigenous San perceptions and interactions with the rock art heritage of the Drakensberg.

Frans was employed as a junior research associate at the then University of Transkei, Botany Department in 1988-1990. Although attached to a Botany Department he conducted a palaeoecological study on the Iron Age of northern Transkei - this study formed the basis for his MA thesis in Archaeology. Frans left the University of Transkei to accept a junior lecturing position at the University of Stellenbosch in 1990. He taught mostly undergraduate courses on World Archaeology and research methodology during this period.

From 1991 – 2001 Frans was appointed as the head of the department of Historical Anthropology at the Natal Museum, Pietermaritzburg. His tasks included academic research and publication, display conceptualization, and curating the African ethnology collections of the Museum. He developed various displays at the Natal Museum on topics ranging from Zulu material culture, traditional healing, and indigenous classificatory systems. During this period Frans also developed a close association with the Departments of Fine Art, Psychology, and Cultural and Media Studies at the

then University of Natal. He assisted many post-graduate students with projects relating to the cultural heritage of South Africa. He also taught post-graduate courses on qualitative research methodology to honours students at the Psychology Department, University of Natal. During this period he served on the editorial boards of the *South African Journal of Field Archaeology* and *Natalia*.

Frans left the Natal Museum in 2001 when approached by a Swiss funding agency to assist an international NGO (Working Group for Indigenous Minorities) with the conceptualization of a San or Bushman museum near Cape Town. During this period he consulted extensively with various San groupings in South Africa, Namibia and Botswana. During this period he also made major research and conceptual contributions to the Kamberg and Didima Rock Art Centres in the Ukhahlamba Drakensberg World Heritage Site.

Between 2003 and 2007 Frans was employed as the Cultural Resource Specialist for the Maloti Drakensberg Transfrontier Project – a bilateral conservation project funded through the World Bank. This project involved the facilitation with various stakeholders in order to produce a cultural heritage conservation and development strategy for the adjacent parts of Lesotho and South Africa. Frans was the facilitator for numerous heritage surveys and assessments during this project. This vast area included more than 2000 heritage sites. Many of these sites had to be assessed and heritage management plans designed for them. He had a major input in the drafting of the new Cultural Resource Management Plan for the Ukhahlamba Drakensberg World Heritage site in 2007/2008. A highpoint of his career was the inclusion of Drakensberg San indigenous knowledge systems, with San collaboration, into the management plans of various rock art sites in this world heritage site. He also liaised with the tourism specialist with the drafting of a tourism business plan for the area.

During April 2008 Frans accepted employment at the environmental agency called Strategic Environmental Focus (SEF). His main task was to set-up and run the cultural heritage unit of this national company. During this period he also became an accredited heritage impact assessor and he is rated by both Amafa and the South African Heritage Resources Agency (SAHRA). He completed almost 50 heritage impact assessment reports nation-wide during an 18th month period.

Frans left SEF and started his own heritage consultancy called “Active Heritage cc” in July 2009. Although mostly active along the eastern seaboard his clients also include international companies such as Royal Dutch Shell through Golder Associates, and UNESCO. He has now completed almost 1000 heritage conservation and management reports for various clients since the inception of “Active Heritage cc”. Amongst these was a heritage study of the controversial fracking gas exploration of the Karoo Basin and various proposed mining developments in South Africa and proposed developments adjacent to various World Heritage sites. Apart from heritage impact assessments (HIA's) Frans also assist the National Heritage Council (NHC) through Haley Sharpe Southern Africa', with heritage site data capturing and analysis for the proposed National

Liberation Route World Heritage Site and the national intangible heritage audit. In addition, he has done background research and conceptualization of the proposed Dinosaur Interpretative Centre at Golden Gate National Park and the proposed Khoi and San Interpretive Centre at Camdeboo, Eastern Cape Province. During 2009 he also produced the first draft dossier for the nomination of the Sehlabathebe National Park, Lesotho as a UNESCO inscribed World Heritage Site.

Frans was appointed as temporary lecturer in the department of Heritage and Tourism, UKZN in 2011. He is also a research affiliate at the School of Cultural and Media Studies in the same institution.

Frans's research interests include African Iron Age, paleoecology, rock art research, San ethnography, traditional healers in South Africa, and heritage conservation. Frans has produced more than forty publications on these topics in both popular and academic publications. He is frequently approached by local and international video and film productions in order to assist with research and conceptualization for programmes on African heritage and culture. He has also acted as presenter and specialist for local and international film productions on the rock art of southern Africa. Frans has a wide experience in the fields of museum and interpretive centre display and made a significant contribution to the conceptual planning of displays at the Natal Museum, Golden Horse Casino, Didima Rock Art Centre and !Kwa tu San Heritage Centre. Frans is also the co-founder and active member of "African Antiqua" a small tour company who conducts archaeological and cultural tours world-wide. He is a Thetha accredited cultural tour guide and he has conducted more than 50 tours to heritage sites since 1992.

Declaration of Consultants independence

Frans Prins is an independent consultant to BVI and has no business, financial, personal or other interest in the activity, application or appeal in respect of which he was appointed other than fair remuneration for work performed in connection with the activity, application or appeal. There are no circumstances whatsoever that compromise the objectivity of this specialist performing such work.



Frans Prins

TABLE OF CONTENTS

1	BACKGROUND INFORMATION ON THE PROJECT	2
2	BACKGROUND TO ARCHAEOLOGICAL HISTORY OF AREA	2
3	BACKGROUND INFORMATION OF THE SURVEY	4
3.1	Methodology	4
3.1.1	<i>Guidance from Desktop Study (Assumptions and Limitations)</i>	4
3.2	Restrictions encountered during the survey	5
3.2.1	<i>Visibility</i>	5
3.2.2	<i>Disturbance</i>	5
3.3	Details of equipment used in the survey.....	5
4	DESCRIPTION OF SITES AND MATERIAL OBSERVED	6
4.1	Locational data	6
4.2	Description of the general area surveyed.....	6
4.2.1	<i>Background</i>	6
4.2.2	<i>Stakeholder Consultation</i>	7
4.2.3	<i>Desktop Paleontology Assessment</i>	7
5	STATEMENT OF SIGNIFICANCE (HERITAGE VALUE)	7
5.1	Field Rating.....	7
6	RECOMMENDATIONS	9
7	MAPS AND FIGURES	10
8	REFERENCES	13

LIST OF TABLES

Table 1.	Background information.....	2
Table 2.	Field rating and recommended grading of sites (SAHRA 2005)	9
Table 3.	Evaluation and statement of significance.....	10

LIST OF ABBREVIATIONS AND ACRONYMS

EIA	Early Iron Age
ESA	Early Stone Age
HISTORIC PERIOD	Since the arrival of the white settlers - c. AD 1820 in this part of the country
IRON AGE	Early Iron Age AD 200 - AD 1000 Late Iron Age AD 1000 - AD 1830
LIA	Late Iron Age
LSA	Late Stone Age
MSA	Middle Stone Age
NEMA	National Environmental Management Act, 1998 (Act No. 107 of 1998 and associated regulations (2006)).
NHRA	National Heritage Resources Act, 1999 (Act No. 25 of 1999) and associated regulations (2000))
SAHRA	South African Heritage Resources Agency
STONE AGE	Early Stone Age 2 000 000 - 250 000 BP Middle Stone Age 250 000 - 25 000 BP Late Stone Age 30 000 - until c. AD 200

EXECUTIVE SUMMARY

A heritage survey of the proposed Ithala Madadeni Economic Hub, Newcastle Local Municipality, KZN identified no archaeological or heritage sites on the footprint. In addition, no heritage sites occur within 50m from the footprint. The greater area is also not part of any known cultural landscape. An Amafa registered palaeontologist, however, needs to conduct a ground survey of the footprint before development may proceed. The area has a high fossil sensitivity. Attention is drawn to the South African Heritage Resources Act, 1999 (Act No. 25 of 1999) and the KwaZulu-Natal Heritage Act (Act No. 4 of 2008), which requires that operations that expose archaeological or historical remains as well as graves and fossil material should cease immediately, pending evaluation by the provincial heritage agency. It is important to note that all graves in KwaZulu-Natal, including those younger than 60 years, are protected by provincial heritage legislation.

1 BACKGROUND INFORMATION ON THE PROJECT

Table 1. Background information

Consultant:	Frans Prins (Active Heritage cc) for BVI
Type of development:	The Newcastle Municipality is planning to develop an area of approximately 11 hectares. The project is for the development of an area of approximately 11 into an industrial complex (factories and warehouses) (Fig 3). The plan is to develop the entire site.
Rezoning or subdivision:	Rezoning
Terms of reference	To carry out a Phase One Heritage Impact Assessment
Legislative requirements:	The Heritage Impact Assessment was carried out in terms of the National Environmental Management Act, 1998 (Act No. 107 of 1998) (NEMA) and following the requirements of the National Heritage Resources Act, 1999 (Act No. 25 of 1999) (NHRA) and the KwaZulu-Natal Heritage Act, 1997 (Act No. 4 of 2008)

1.1. Details of the area surveyed:

The project area is located in the township of Madadeni approximately 10km to the south east of Newcastle (Figs 1, 2 & 3). The footprint consists of an open piece of undeveloped land measuring approximately 386m x 344m (Fig 3). A fence runs along the southern and eastern boundary and the existing roads acts as the northern and western boundary. Apart from one modern homestead situated on the north eastern boundary of the property, there is no evidence for any anthropogenic markers. The GPS coordinates for the project area are: S 27°47' 8.59" E 30°3' 58.01"

2 BACKGROUND TO ARCHAEOLOGICAL HISTORY OF AREA

The greater Newcastle/Madadeni area has never been systematically surveyed for archaeological heritage sites. Only five sites are recorded in the data base of the KwaZulu-Natal Museum. These include two rock art sites with later Stone Age material and three Later Iron Age sites with characteristic stone walling. Oliver Davies, a pioneer archaeologist, has also recorded Middle Stone Age sites to the south of Newcastle near Madadeni. None of these sites, however, occur in the close vicinity of the project area.

The San were the owners of the land for almost 30 000 years but the local demography started to change soon after 2000 years ago when the first Bantu-speaking farmers crossed the Limpopo River and arrived in South Africa. Around 800 years ago, if not earlier, Bantu-speaking farmers also settled in the greater Newcastle/Madadeni area. Although some of the sites constructed by these African farmers consisted of stone walling not all of them were made from stone. Sites located elsewhere in the KwaZulu-Natal Midlands show that many settlements just consisted of wattle and daub structures. These Later Iron Age sites were most probably inhabited by Nguni-speaking groups such as the amaBhele and others (Bryant 1965). However, by 1820 the original African farmers were dispersed from this area due to the expansionistic policies of the Zulu Kingdom of King Shaka. African refugee groups and individuals were given permission to settle in the area by the British colonial authorities after 1845 where most of them became farm labourers. After the Anglo-Zulu war of 1879 and the Bambatha Rebellion of 1911 many of the African people in the study area adopted a Zulu ethnic identity.

European settlement of the area started soon after 1838 when the first Voortrekker settlers marked out large farms in the area. However, most of these farms were abandoned in the 1840's when Natal became a British colony only to be reoccupied again by British immigrants.

Newcastle started off life as Post Halt Two on the journey between Durban (then Port Natal) and the Zuid-Afrikaansche Republiek and Johannesburg. The city was strategically placed in 1854 by the Surveyor General of the Natal Colony, Dr PC Sutherland. The city was later known as the Waterfall River Township because of the Ncandu River. In 1864, the town of Newcastle was founded on the site, becoming the fourth settlement to be established in Natal after Durban, Weenen and Pietermaritzburg. Newcastle was named after the British Colonial Secretary, the Duke of Newcastle. In 1876 the Fort Amiel was built to ward off a possible Zulu attack (Derwent 2006). In 1873 Newcastle became a separate electoral division. To commemorate Queen Victoria's Diamond (60th) Jubilee a sandstone construction of a town hall started in 1897, being completed two years later. The town was used as a depot by the British during both the First and Second Boer War. Newcastle functioned as a major transport junction and popular stopover for wagons and post chaises during the late 19th century. British preparation work for the Pretoria Convention of 1881 was done at Newcastle. In 1890, the first train arrived in Newcastle and in 1891, Newcastle was declared a borough. The discovery of coal brought a new era of prosperity and several ambitious building projects were planned. The present township of Madadeni, situated approximately 16km to the

south east of newcastle, was originally founded as a mental hospital on the 1st August 1967. The township developed around the hospital in subsequent years.

3 BACKGROUND INFORMATION OF THE SURVEY

3.1 Methodology

A desktop study was conducted of the archaeological databases housed in the KwaZulu-Natal Museum. The SAHRIS website was consulted for previous heritage surveys and heritage site data covering the project area. Various heritage impact assessments have been conducted in the greater Newcastle/Madadeni area but none of them overpapped with the project area in the present study. In addition, the available archaeological and heritage literature covering the greater Newcastle/Madadeni areas was consulted. Aerial photographs covering the area were scrutinised for potential Iron Age and historical period structures and grave sites. A ground survey, following standard and accepted archaeological procedures, was conducted on the 28 March 2020. Particular attention was focused on the occurrence of potential grave sites and other heritage resources on the footprint.

3.1.1 *Guidance from Desktop Study (Assumptions and Limitations)*

- The desktop study indicates that Stone Age Sites of all periods and traditions may occur in the greater Newcastle/Madadeni area.
- Middle Stone Age tools have been found in dongas and erosion gullies at various locales in the greater New Castle/Madadeni area. These sites are usually out of context and of little research value. Middle Stone Age deposits often occur in deep cave deposits throughout KwaZulu-Natal (including the greater Newcastle areas). Again no erosion gullies or suitable rocky outcrops that may harbour shelters with deep cave deposits occur in the project area.
- Later Stone Age sites are more prolific in the coastal areas of KwaZulu-Natal and also in the foothills of the Drakensberg to the west. Although Later Stone Age sites have are known from the greater Newcastle/Madadeni area they are rather scarce. In addition, there are no suitable rocky outcrops in the project area that may harbour shelters with Later Stone Age deposits.
- Early Iron Age Sites typically occur along major river valleys below the 700 m contour in KwaZulu-Natal. It is very unusual to find sites above the 1000m

contour. The project area is situated above the 700m contour far removed from a major river valley setting. It is therefore most unlikely to expect Early Iron Age sites at the project area.

- Later Iron Age sites may occur in the project area. These sites were occupied by the ancestors of the first Nguni-speaking agriculturists as well as their descendants who settled in KwaZulu-Natal. In some areas in KwaZulu-Natal, such as at Estcourt, Ladysmith, Nqutu and Newcastle these early agriculturists built with stone and as a result such sites have a high archaeological visibility. However, in other areas such as those regions around Umbumbulo and the South Coast these agriculturists built with wattle and daub and the archaeological site visibility is far more compromised. Often sites are only located with reference to historical or oral data.
- Historical buildings, structures and farmsteads do occur scattered throughout the greater Newcastle area. Some of these occur in the city of Newcastle but old farmsteads and associated structures as well as some battle-fields also occur in the greater Newcastle/Madadeni area. Historical era buildings and structures could occur at or near the project area.

3.2 Restrictions encountered during the survey

3.2.1 *Visibility*

Visibility was good.

3.2.2 *Disturbance*

No disturbance of any potential heritage features was noted.

3.3 Details of equipment used in the survey

GPS: Garmin Etrek

Digital cameras: Canon Powershot A460

All readings were taken using the GPS. Accuracy was to a level of 5 m.

4 DESCRIPTION OF SITES AND MATERIAL OBSERVED

4.1 Locational data

Province: KwaZulu-Natal

Closest Towns: Newcastle

Municipalities: Newcastle Local Municipality and Amajuba District Municipality.

4.2 Description of the general area surveyed

4.2.1 Background

The proposed development plot is situated on an open field within the township of Madadeni (Figs 5 & 6). Industrial developments already occur to the immediate north and north west of the proposed development plot. Informal settlements and low cost housing borders onto the southern and south eastern sections of the area. One informal homestead is situated within the north eastern section of the footprint. Apart from a few footpaths (Fig 7) there is little evidence for additional anthropogenic markers on the proposed development plot.

The desktop survey did not locate any archaeological and other heritage sites on the proposed development plot. The closest known archaeological site is situated more than 2km to the west of the project area. Historical period sites do occur more than 3km to the north west of the project area (Fig 2). However, none of these sites are threatened by the proposed development and there is no need for mitigation. The SAHRIS website indicates that various CRM surveys have been conducted in the greater Newcastle area in recent years (For instance see Gaiger 2015, Prins 2018). However, none of these surveys covered the project area.

The ground survey supports the conclusion reached in the desktop survey. The consultant could not find any archaeological or other heritage sites on the footprint following standard archaeological ground survey techniques. Particular care was taken to locate potential grave sites but none was visible on the surface. Local residents interviewed by the consultant had no knowledge of any graves on the footprint. The area is also not part of any known cultural landscape (Table 3).

4.2.2 Stakeholder Consultation

The consultant spoke to local pedestrians and inhabitants encountered during the ground survey. None of them had any knowledge of graves or other heritage features in the project area.

4.2.3 Desktop Paleontology Assessment

The updated fossil sensitivity map, as provided by the SAHRIS website, shows that the project area is of high paleontological sensitivity (Fig 4). According to Amafa policy the implication is that a comprehensive paleontological desktop study will be required before the proposed development may proceed. This study will have to be conducted by an Amafa accredited palaeontologist.

5 STATEMENT OF SIGNIFICANCE (HERITAGE VALUE)

5.1 Field Rating

Not applicable as no heritage sites are known to occur on the footprint or within 50m from the proposed development plot. However, should graves occur on the property then they would be rated as locally significant (Table 2).

Table 2. Field rating and recommended grading of sites (SAHRA 2005)

Level	Details	Action
National (Grade I)	The site is considered to be of National Significance	Nominated to be declared by SAHRA
Provincial (Grade II)	This site is considered to be of Provincial significance	Nominated to be declared by Provincial Heritage Authority
Local Grade IIIA	This site is considered to be of HIGH significance locally	The site should be retained as a heritage site
Local Grade IIIB	This site is considered to be of HIGH significance locally	The site should be mitigated, and part retained as a heritage site
Generally Protected A	High to medium significance	Mitigation necessary before destruction
Generally Protected B	Medium significance	The site needs to be recorded before destruction
Generally Protected C	Low significance	No further recording is required before destruction

No heritage sites occur in the project area. The footprint has no heritage value (Table 3).

Table 3. Evaluation and statement of significance.

Significance criteria in terms of Section 3(3) of the NHRA		
	Significance	Rating
1.	Historic and political significance - The importance of the cultural heritage in the community or pattern of South Africa's history.	None.
2.	Scientific significance – Possession of uncommon, rare or endangered aspects of South Africa's cultural heritage.	None.
3.	Research/scientific significance – Potential to yield information that will contribute to an understanding of South Africa's natural or cultural heritage.	None.
4.	Scientific significance – Importance in demonstrating the principal characteristics of a particular class of South Africa's cultural places/objects.	None.
5.	Aesthetic significance – Importance in exhibiting particular aesthetic characteristics valued by a community or cultural group.	None.
6.	Scientific significance – Importance in demonstrating a high degree of creative or technical achievement at a particular period.	None.
7.	Social significance – Strong or special association with a particular community or cultural group for social, cultural or spiritual reasons.	None.
8.	Historic significance – Strong or special association with the life and work of a person, group or organization of importance in the history of South Africa.	None.
9.	The significance of the site relating to the history of slavery in South Africa.	None.

6 RECOMMENDATIONS

As no heritage sites, features or graves occur in the project area there is no reason why the proposed development may not proceed from a general heritage perspective. However, the first phase paleontological desktop assessment indicates that a ground survey by an Amafa accredited paleontologist will be required before the development may proceed. The area has a high fossil sensitivity. It is also important to take note of the KwaZulu-Natal Heritage Act that requires that any exposing of graves and archaeological and historical residues should cease immediately pending an evaluation by the heritage authorities.

7 MAPS AND FIGURES

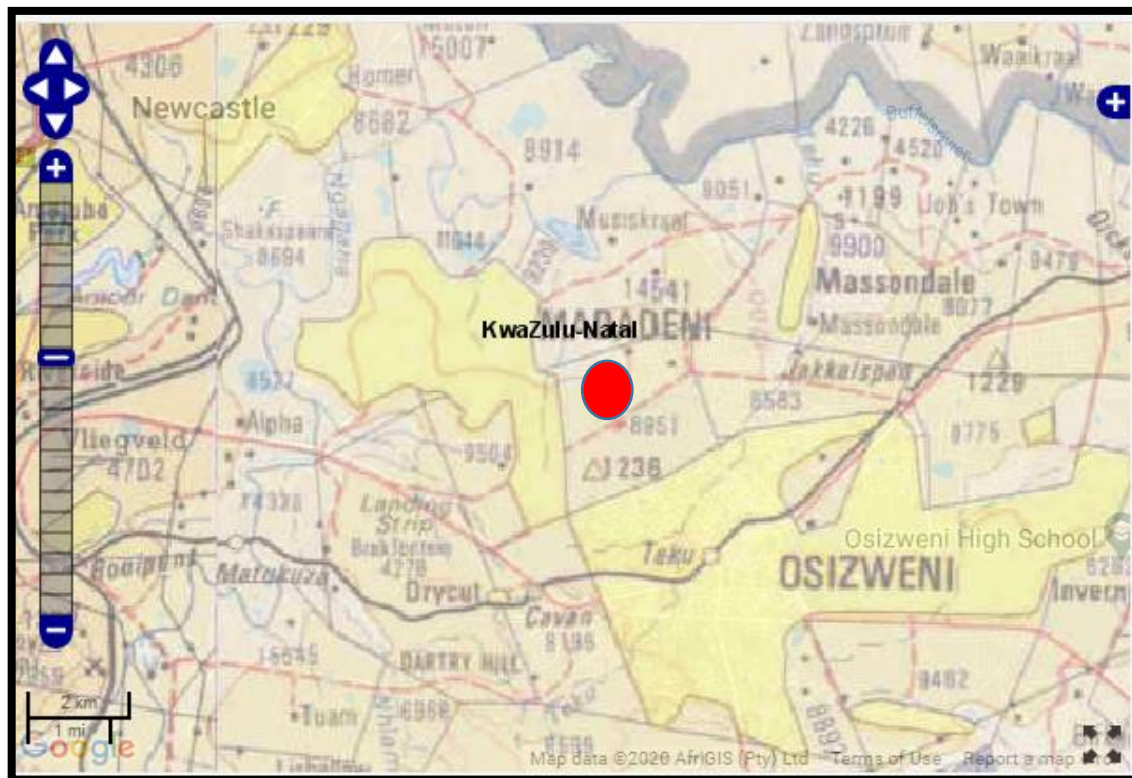


Figure 1. Topographical Map showing the location of the project area (red polygon) at Madadeni, Amajuba Municipality.

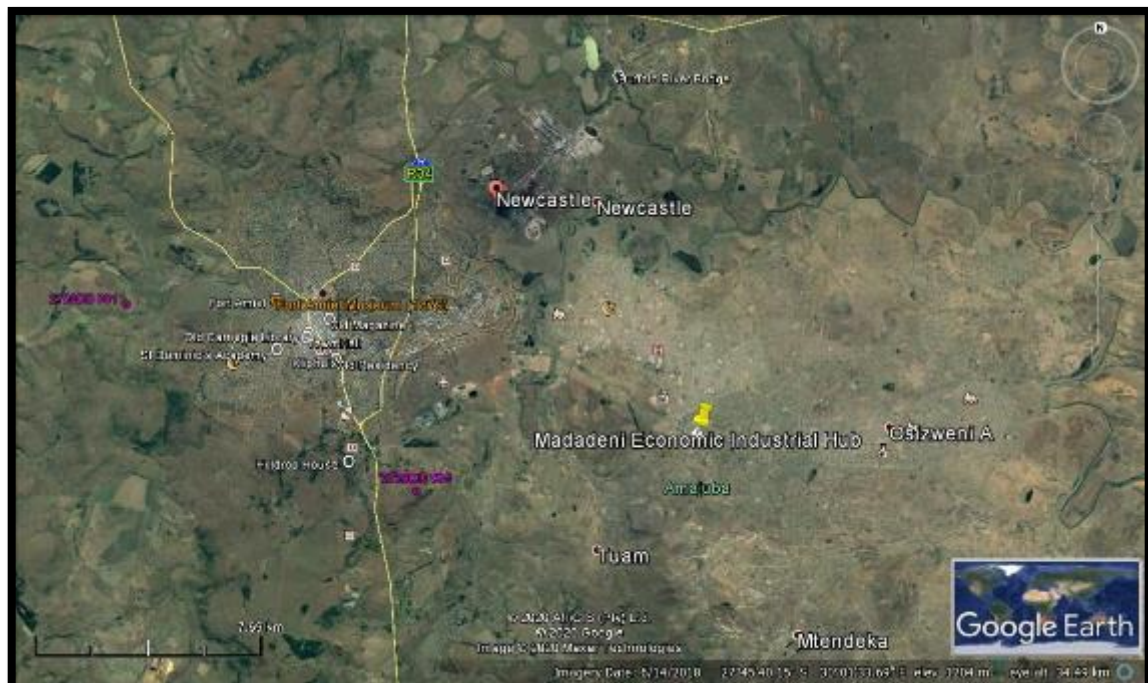


Figure 2. Google Earth Imagery showing the location of the project area (Madadeni Economic Industrial Hub) relative to known heritage sites in the greater area. The purple markers indicate archaeological sites, the yellow and white markers indicate historical period sites.



Figure 3. Google Earth Imagery showing the location and context of the proposed Madadeni Economic Industrial Hub (Source: BVI).

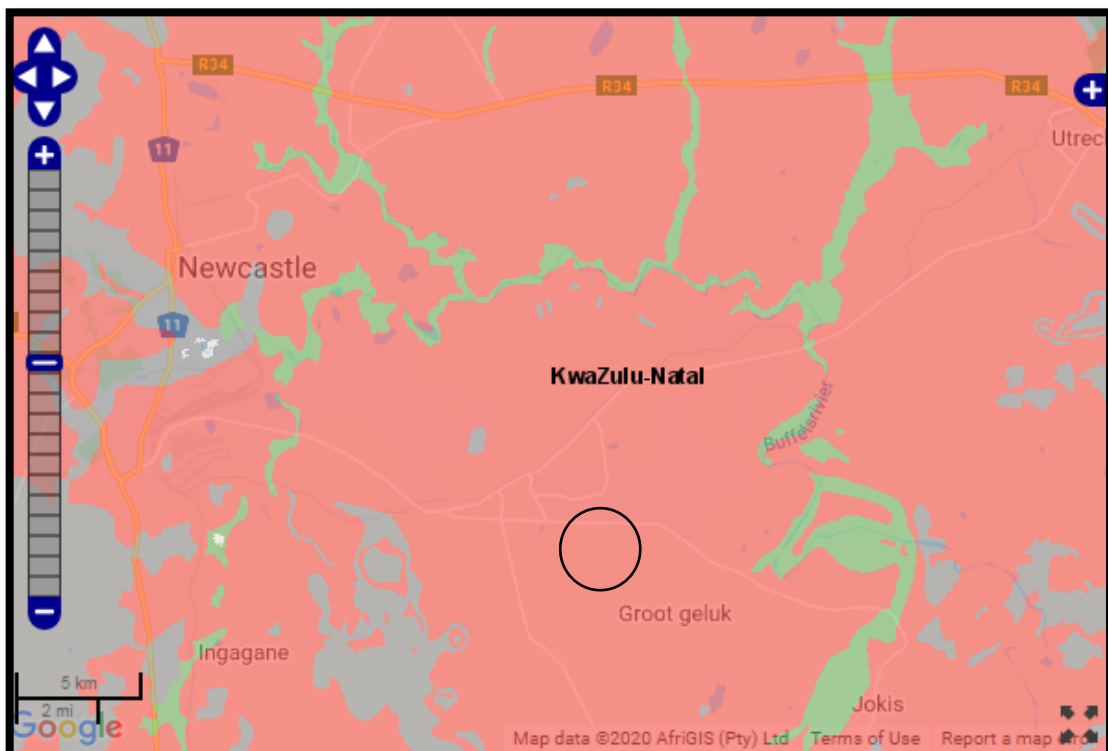


Figure 4. Fossil Sensitivity Map of the project area: The project area is indicated by the black polygon. The red background colour indicate that the area has a high fossil sensitivity. A paleontological ground survey will be required by an Amafa accredited paleontologist (Source: SAHRIS website).



Figure 5. The project area is situated in Madadeni – a sprawling township development approximately 16km to the south east of Newcastle.



Figure 6. The proposed development plot consists of a open field with no evidence of any archaeological or heirtage sites of significance.



Figure 7. Some footpaths criss cross the proposed development site but there is no evidence for any archaeological or heritage sites.

8 REFERENCES

- Bryant, A. T. 1965. *Olden times in Zululand and Natal*. Cape Town: C. Struik.
- Bulpin, T.V. 1966. *Natal and the Zulu Country*. Cape Town: Books of Africa.
- Derwent, S. 2006. *KwaZulu-Natal Heritage Sites: A Guide to Some Great Places*. David Phillips: Cape Town.
- Gaiger, S. 2015. *Phase 1 Heritage Impact Assessment Report of the proposed Upgrade of the P483 between Newcastle and Madadeni, KZN*. G. A Heritage for GBS Environmental Consulting. Report submitted to SAHRIS.
- Huffman, T. N. 2007. *Handbook to the Iron Age: The Archaeology of Pre-colonial Farming Societies in Southern Africa*. University of KwaZulu-Natal Press. Pietermaritzburg.
- Lugg, H.C. 1949. *Historic Natal and Zululand*. Pietermaritzburg: Shuter and Shooter.

Maggs, T. The Iron Age farming communities. In Duminy, A. and Guest, B. 1989. *Natal and Zululand: from Earliest Times to 1910. A New History*. Pg. 28-46. University of Natal Press. Pietermaritzburg.

Mazel, A. The Stone Ages. In Duminy, A and Guest, B. 1989. *Natal and Zululand: from Earliest Times to 1910. A New History*. Pg. 1-27. University of Natal Press. Pietermaritzburg.

Mitchell, P. 2002. *The Archaeology of Southern Africa*. Cambridge University Press: Cambridge.

Prins, F. E. 2018. *Proposed Ngagane Bulk Water Pipeline, Newcastle Local Municipality, KZN*. Active Heritage cc for Environmental Agency. Report submitted to SAHRIS.

SAHRA, 2005. *Minimum Standards for the Archaeological and the Palaeontological Components of Impact Assessment Reports, Draft version 1.4*.