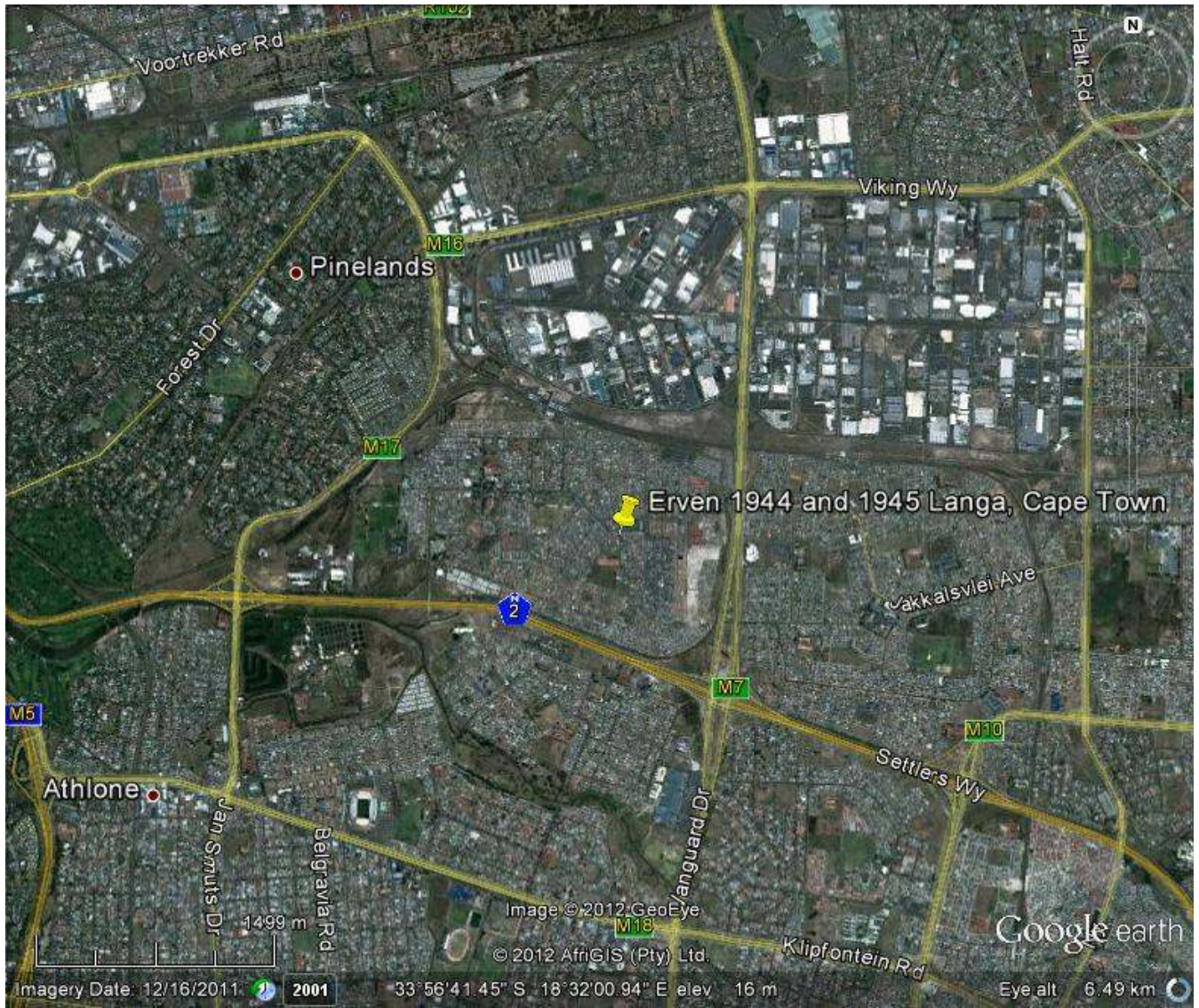
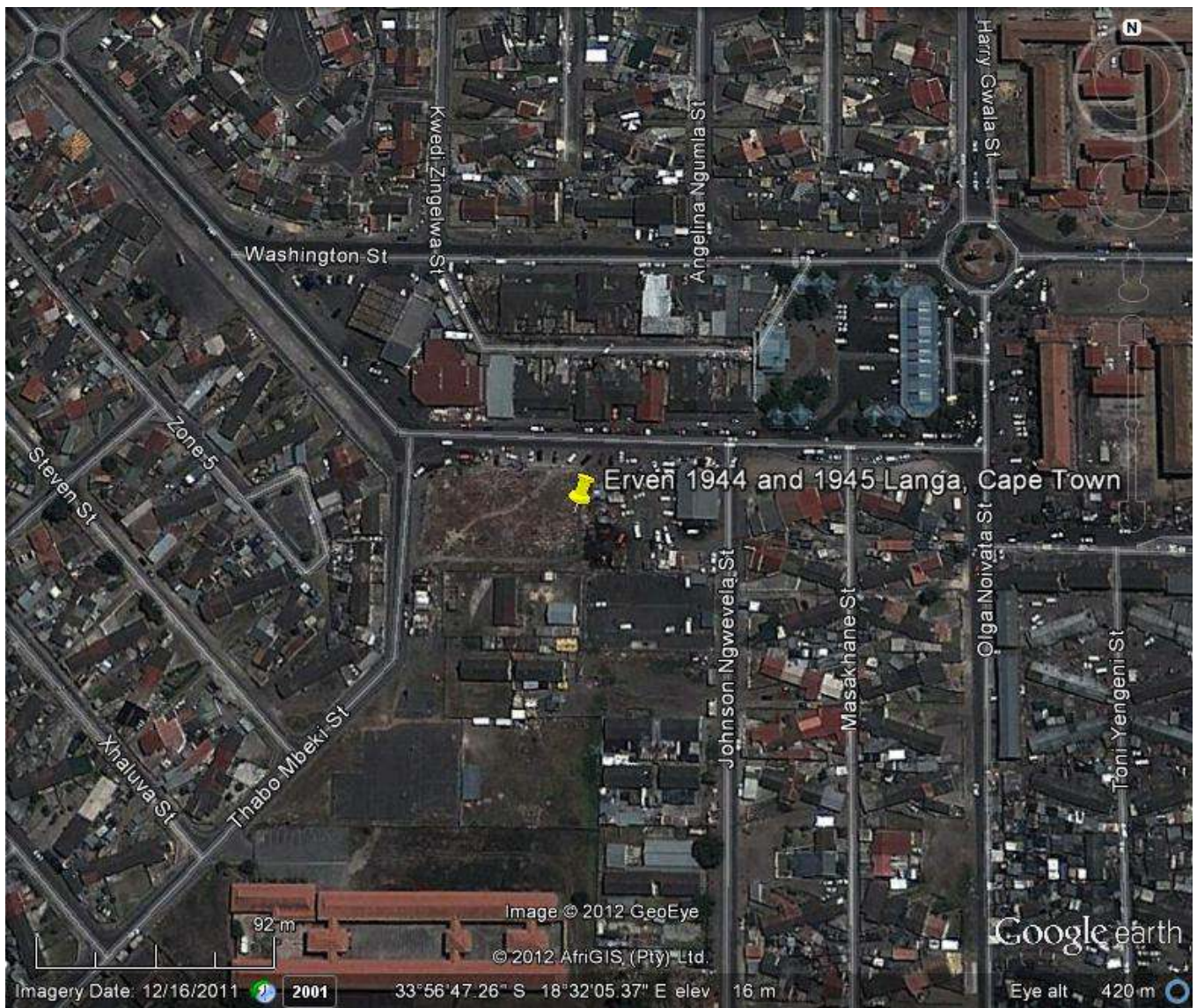


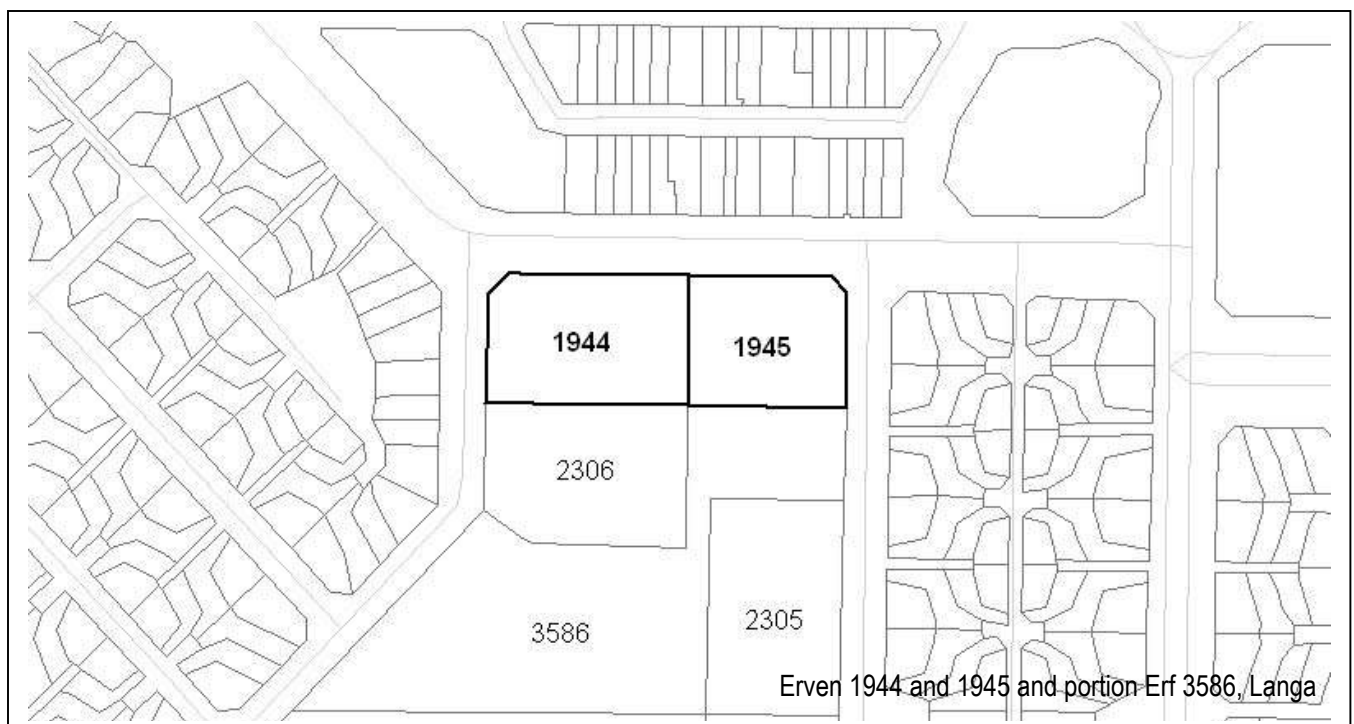
Metropolitan context (Google earth image, October 2012)



Local context (Google earth image, October 2012)



Site location (Google earth image, October 2012)



Erven 1944 and 1945 and portion Erf 3586, Langa

# SITE PHOTOGRAPHS



Washington Street in a westerly direction with post office to the south



Washington Street in a westerly direction with commercial activity to the north



View of site from Washington Street in a south westerly direction



View of site from Washington Street in a southerly direction



View of site from Washington Street in a southerly direction



View of site from Thabo Mbeki Street in an easterly direction



View of site from Washington Street in a westerly direction showing residential development to the west of the site



View along Thabo Mbeki Street in a southerly direction showing residential development to the west of the site and Kulani



View of site along Johnson Ngwevela Street in a northerly direction showing residential development to the east of the site



View of site along Johnson Ngwevela Street in a westerly direction showing parking area to the south of the site



Looking north along Johnson Ngwevela Street with residential development to the east, post office to the north west and commercial development in the distance

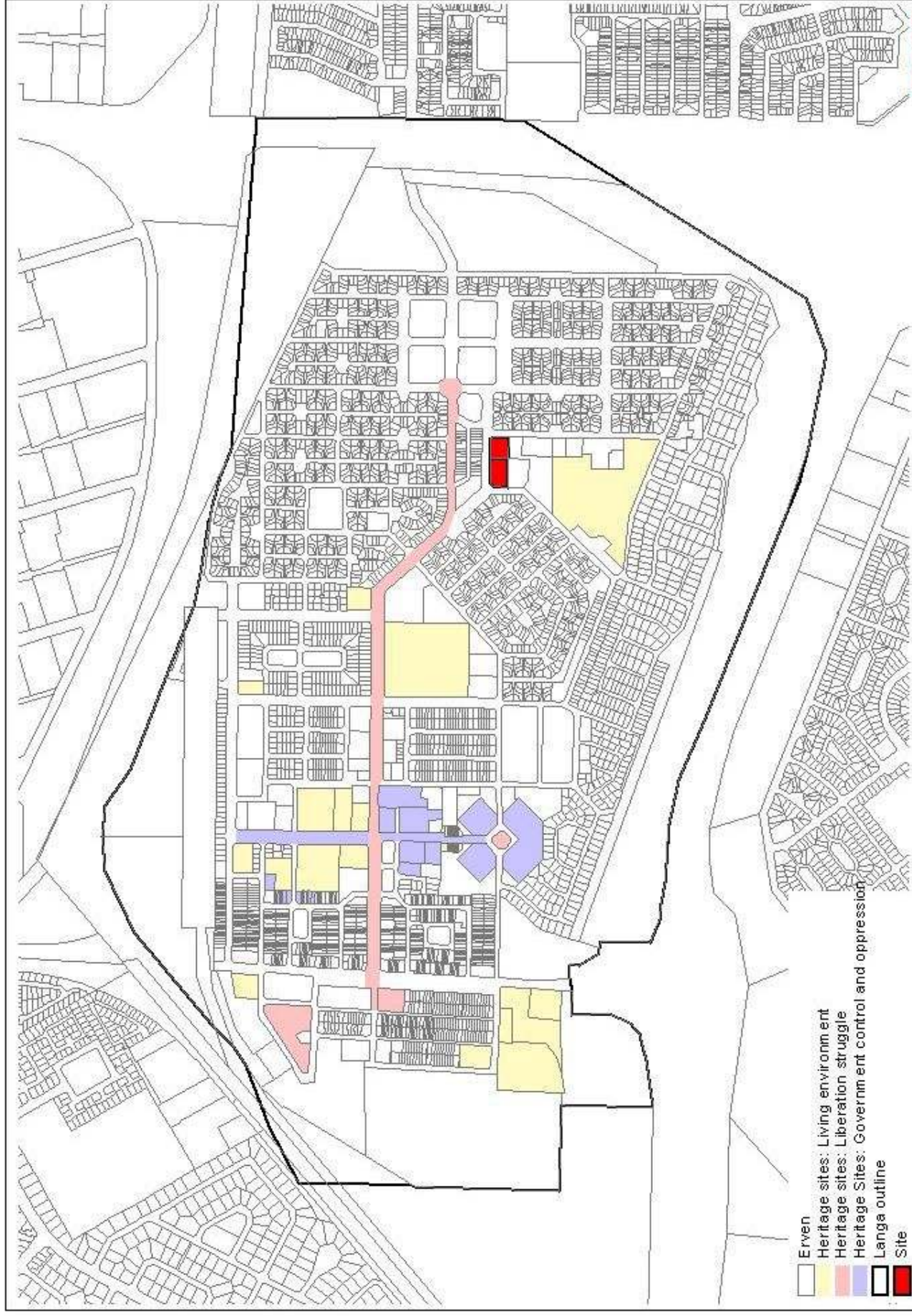


Looking north along Johnson Ngwevela Street with commercial development to the north and the main taxi rank to the north east in the distance



# Nominated Heritage Sites

Langa libalele Shopping Centre Development



- Erven
- Heritage sites: Living environment
- Heritage sites: Liberation struggle
- Heritage Sites: Government control and oppression
- Langa outline
- Site

