

18 May 2023

Amafa and Sahris Heritage Committee

RE	HERITAGE PERMIT APPLICATION FOR 22 SCHOOL ROAD, R/1667 WENTWORTH, BLUFF
	REPORT WITH PICTURE REFERENCES

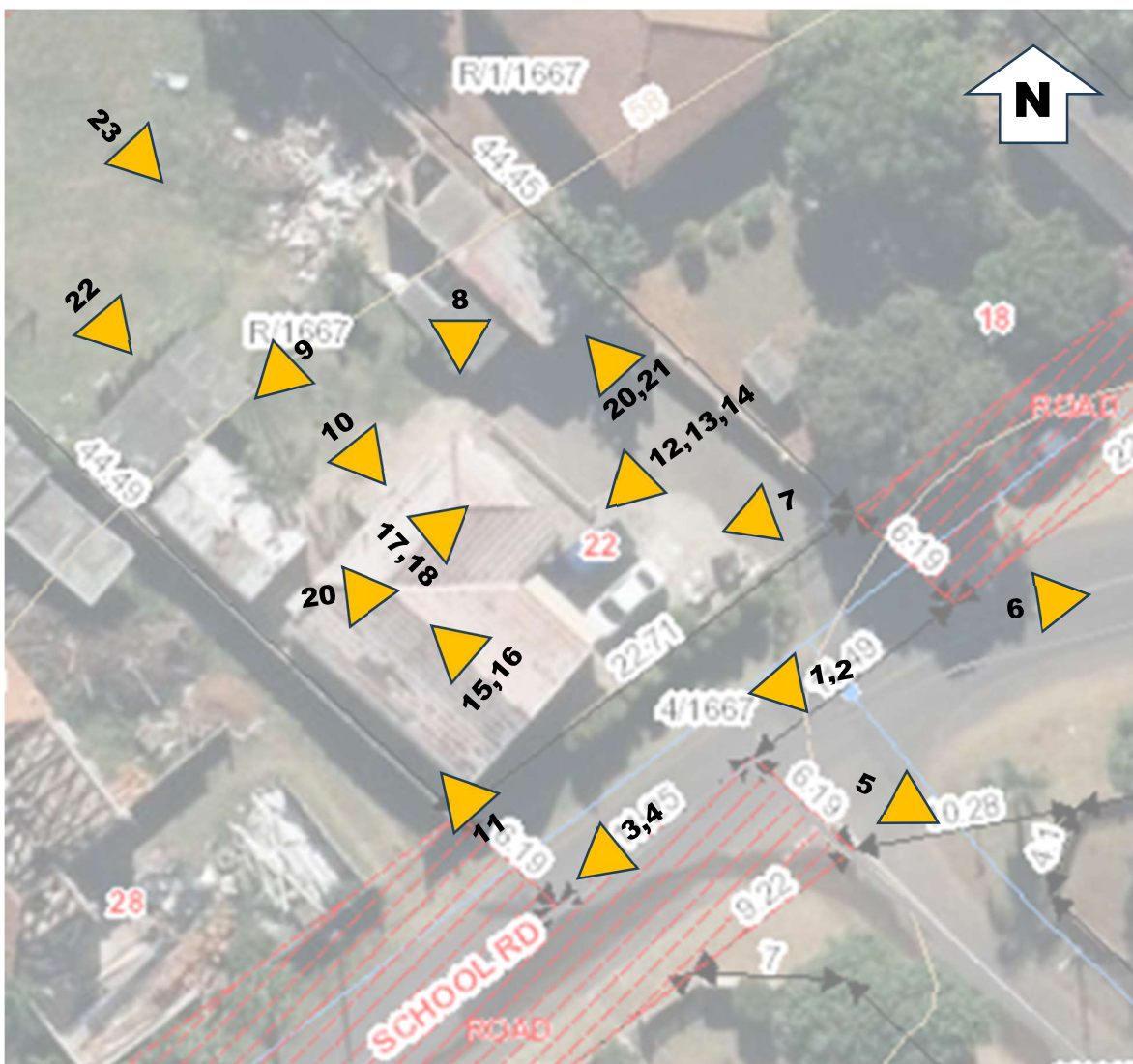




Figure 1: Street View



Figure 2: Street View



Figure 3: South West View looking down School Road



Figure 4: South West View looking down School Road



Figure 5: South East View Across Road



Figure 6: North East View Across Road



Figure 7: External View of House



Figure 8: External View of House



Figure 9: External View of ancillary building



Figure 10: External View of House



Figure 11: External View of House



Figure 12: External View of House



Figure 13: External View of House



Figure 14: External View of House



Figure 15: Internal view of house



Figure 16: Internal view of house

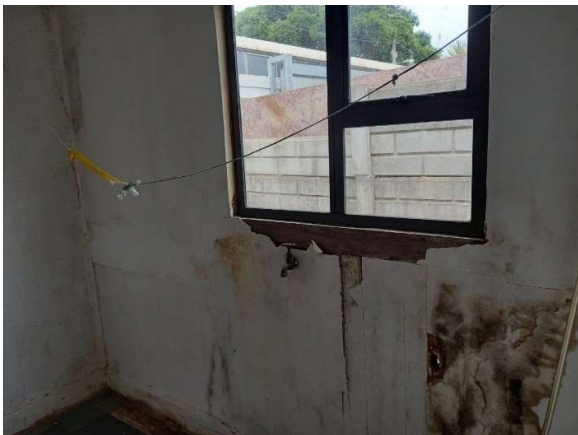


Figure 17: Internal view of house



Figure 18: Internal View of House



Figure 19: Internal View of house



Figure 20: External view of garage



Figure 21: External view of garage



Figure 22: ancillary unit



Figure 23: Exterior view of house and ancillary unit