

Analysis ID	Specimen Number	Weight (g)	Max Dimension (mm)	Lot	StratAgg	Photofile
1	181100	3.121		28.36	8201 ALBS	DSC_4416
2	215481	3.926		21.11	8369 ALBS	DSC_4393
3	448968	3.79		39.07	11395 ALBS	DSC_4379
4	506452	5.473		30.63	11683 BAS	DSC_4468
5	470397	3.835		33.62	11762 BAS	DSC_4463
6	472611	16.141		41.95	11771 BAS	DSC_4467
7	479747	6.502		28.45	11843 BAS	DSC_4469
8	479747.1	2.574		25.18	11843 BAS	DSC_4469
9	485062	10.261		28.95	11854 BAS	DSC_4478
10	479788	8.315		33.26	11855 BAS	DSC_4459
11	248932	5.277		26.52	8584 BBCSR	DSC_4395
12	328894	24.45		49.32	10675 BBCSR	DSC_4398
13	448936	6.06		35.24	11122 BBCSR	DSC_4491
14	448950	10.16		30.92	11159 BBCSR	DSC_4397
15	448952	14.93		39.04	11159 BBCSR	DSC_4496
16	448951	5.1		22.64	11159 BBCSR	DSC_4495
17	448929	7.55		30.46	11174 BBCSR	DSC_4386
18	426367	37.53		52.29	11183 BBCSR	DSC_4388
19	435067	5.06		23.32	11207 BBCSR	DSC_4404
20	448963	5.55		20.17	11383 BBCSR	DSC_4497
21	420191	29.41		36.56	11431 BBCSR	DSC_4378
22	137495	10.582		42.84	1283 DBCS	DSC_4422
23	257260	5.17		22.25	1283 DBCS	DSC_4474
24	119213	16.696		31.81	3245 DBCS	DSC_4430
25	155353	5.503		24.72	7975 DBCS	DSC_4423
26	156323	4.949		21.81	7977 DBCS	DSC_4483
27	156438	4.232		30.96	7982 DBCS	DSC_4484
28	170471	6.107		29.05	7998 DBCS	DSC_4485
29	173486	20.713		33.63	8096 DBCS	DSC_4421
30	200203	5.453		17.99	8265 DBCS	DSC_4489
31	131512.1	9.789		28.78	1147 LBSR	DSC_4476
32	169724	4.925		29.61	8071 LBSR	DSC_4488
33	278671	7.33		26.55	8909 LBSR	DSC_4490
34	325709	104.59		80.86	10460 LBSR	DSC_4411
35	448809	5.3		25.32	10536 LBSR	DSC_4494
36	343257	30.4		43.2	10552 LBSR	DSC_4493
37	448782	8.93		36.89	10923 LBSR	DSC_4410
38	448779	24.06		36.31	10931 LBSR	DSC_4385
39	448783	9.58		31.47	10931 LBSR	DSC_4405
40	102494	6.972		32.12	3322 NWR	DSC_4426
41	103699	3.195		25.41	3341 NWR	DSC_4427
42	257281	4.725		29.06	3343 NWR	DSC_4482
43	257356	6.404		26.32	8099 OBS1	DSC_4419
44	257360	3.69		22.4	8111 OBS1	DSC_4401
45	181961	34.311		46.55	8200 OBS1	DSC_4418

46	223155	4.335	22.2	8447	OBS1	DSC_4417
47	310134	23.97	47.94	9414	OBS2	DSC_4392
48	385509	39.27	47.06	10820	OBS2	DSC_4413
49	394309	4.56	25.12	10820	OBS2	DSC_4394
50	433796	4.96	24.3	11234	OBS2	DSC_4390
51	437504	25.53	59.81	11262	OBS2	DSC_4837
52	475946	5.493	25.33	11564	OBS2	DSC_4458
53	479018	4.06	25.28	11570	OBS2	DSC_4466
54	502993	7.056	22.67	11930	OBS2	DSC_4461
55	257268	4.116	26.47	3215	RBSR	DSC_4481
56	152834	11.145	54.8	7931	RBSR	DSC_4424
57	257319	16.446	30.71	7932	RBSR	DSC_4425
58	257338	19.086	31.73	8010	RBSR	DSC_4486
59	257340	14.22	34.51	8019	RBSR	DSC_4420
60	257346	5.201	23.55	8040	RBSR	DSC_4487
61	397884	8.38	36.13	11108	RBSR	DSC_4409
62	132476	5.375	25.43	1153	SADBS	DSC_4456
63	140806	4.531	19	1248	SADBS	DSC_4464
64	120554	3.26	24.23	3285	SADBS	DSC_4455
65	513915	7.732	25.5	11708	SGS	DSC_4465
66	346442	11.6	44.63	9735	YBS	DSC_4406
67	448796	3.24	25.62	9115	YBSR	DSC_4407
68	448753	3.37	30.62	9234	YBSR	DSC_4414
69	448805	3.26	31.66	9334	YBSR	DSC_4391
70	310817	7.45	26.56	9383	YBSR	DSC_4415

Samples for Geochemistry Analysis
 Pinnacle Point 5-6 Ochre Assemblage
 To be analyzed by James R. McGrath,
 University of Iowa, USA

PP5-6 Stratigraphic Aggregate	Sample Count	Marine Isotope Stage	Sample Count
RBSR	7	MIS 3	28
BBCSR	11	MIS 4	28
OBS2	8	MIS 5	14
SGS	1	Total	70
OBS1	4		
SADBS	3		
ALBS	3		
LBSR	9		
YBSR	4		
YBS	1		
BAS	7		
DBCS	9		
NWR	3		
Grand Total	70		



Specimen Num: 420191

Lot: 11431

Stratigraphic Aggregate: BBCSR



Specimen Num: 448968 Lot: 11395 Stratigraphic Aggregate: ALBS



Specimen Num: 448779 Lot: 10931 Stratigraphic Aggregate: LBSR



Specimen Num: 448929 Lot: 11174 Stratigraphic Aggregate: BBCSR



Specimen Num: 426367 Lot: 11183 Stratigraphic Aggregate: BBCSR



Specimen Num: 433796 Lot: 11234 Stratigraphic Aggregate: OBS2



Specimen Num: 448805 Lot: 9334 Stratigraphic Aggregate: YBSR



Specimen Num: 310134 Lot: 9414 Stratigraphic Aggregate: OBS2



Specimen Num: 215481 Lot: 8369 Stratigraphic Aggregate: ALBS



Specimen Num: 394309 Lot: 10820 Stratigraphic Aggregate: OBS2



Specimen Num: 248932 Lot: 8584 Stratigraphic Aggregate: BBCSR



Specimen Num: 448950 Lot: 11159 Stratigraphic Aggregate: BBCSR



Specimen Num: 328894 Lot: 10675 Stratigraphic Aggregate: BBCSR



Specimen Num: 257360 Lot: 8111 Stratigraphic Aggregate: OBS1



Specimen Num: 435067 Lot: 11207 Stratigraphic Aggregate: BBCSR



Specimen Num: 448783 Lot: 10931 Stratigraphic Aggregate: LBSR



Specimen Num: 346442 Lot: 9735 Stratigraphic Aggregate: YBS



Specimen Num: 448796 Lot: 9115 Stratigraphic Aggregate: YBSR



Specimen Num: 397884 Lot: 11108 Stratigraphic Aggregate: RBSR



Specimen Num: 448782 Lot: 10923 Stratigraphic Aggregate: LBSR



Specimen Num: 325709 Lot: 10460 Stratigraphic Aggregate: LBSR



Specimen Num: 385509 Lot: 10820 Stratigraphic Aggregate: OBS2



Specimen Num: 448753 Lot: 9234 Stratigraphic Aggregate: YBSR



Specimen Num: 310817 Lot: 9383 Stratigraphic Aggregate: YBSR



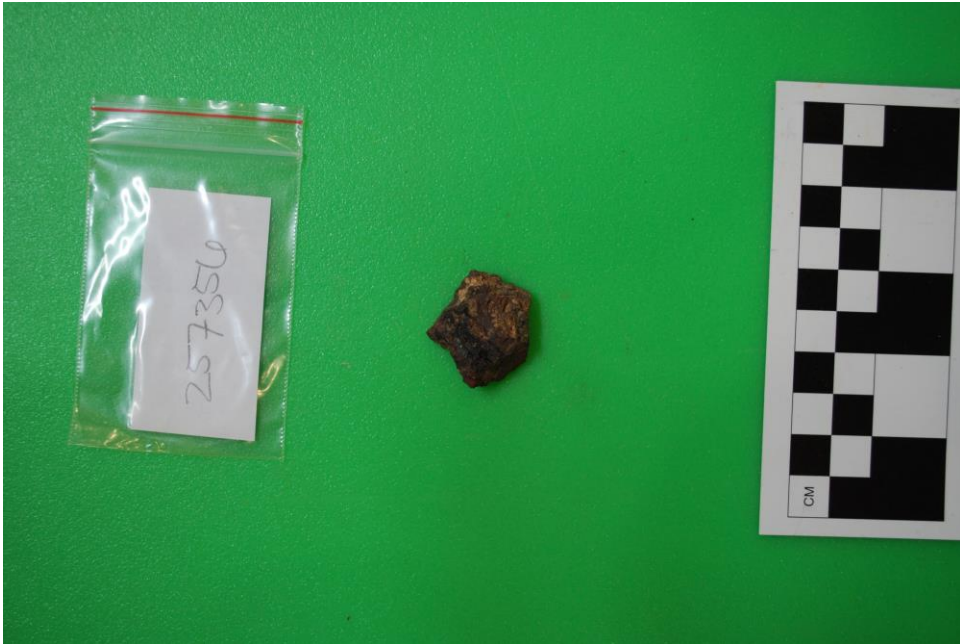
Specimen Num: 181100 Lot: 8201 Stratigraphic Aggregate: ALBS



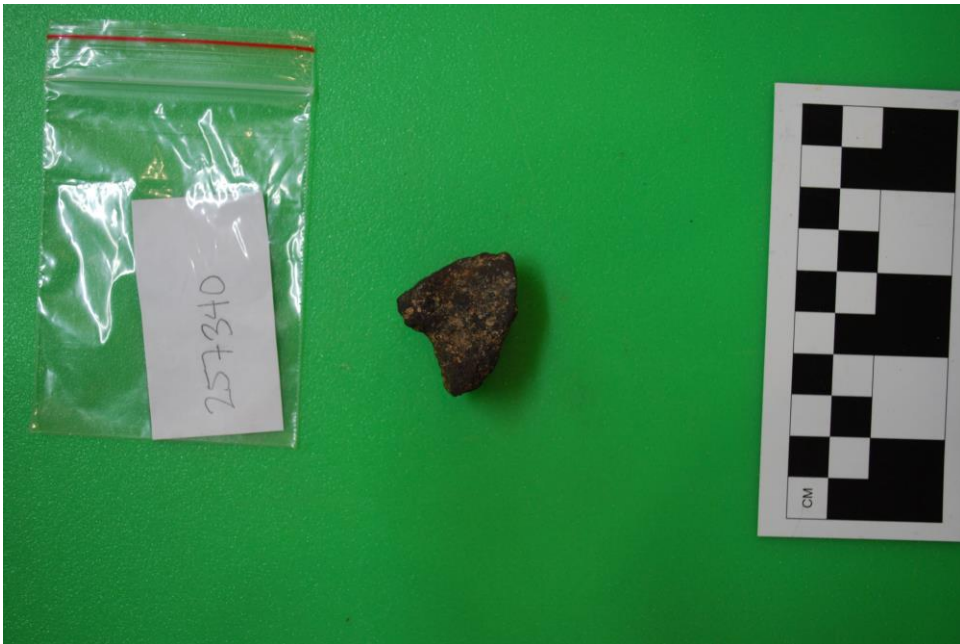
Specimen Num: 223155 Lot: 8447 Stratigraphic Aggregate: OBS1



Specimen Num: 181961 Lot: 8200 Stratigraphic Aggregate: OBS1



Specimen Num: 257356 Lot: 8099 Stratigraphic Aggregate: OBS1



Specimen Num: 257340 Lot: 8019 Stratigraphic Aggregate: RBSR



Specimen Num: 173486 Lot: 8096 Stratigraphic Aggregate: DBCS



Specimen Num: 137495 Lot: 1283 Stratigraphic Aggregate: DBCS



Specimen Num: 155353 Lot: 7975 Stratigraphic Aggregate: DBCS



Specimen Num: 152834 Lot: 7931 Stratigraphic Aggregate: RBSR



Specimen Num: 257319 Lot: 7932 Stratigraphic Aggregate: RBSR



Specimen Num: 102494 Lot: 3322 Stratigraphic Aggregate: NWR



Specimen Num: 103699 Lot: 3341 Stratigraphic Aggregate: NWR



Specimen Num: 119213 Lot: 3245 Stratigraphic Aggregate: DBCS



Specimen Num: 120554 Lot: 3285 Stratigraphic Aggregate: SADBS



Specimen Num: 132476 Lot: 1153 Stratigraphic Aggregate: SADBS



Specimen Num: 475946 Lot: 11564 Stratigraphic Aggregate: OBS2



Specimen Num: 479788 Lot: 11855 Stratigraphic Aggregate: BAS



Specimen Num: 502993

Lot: 11930

Stratigraphic Aggregate: OBS2



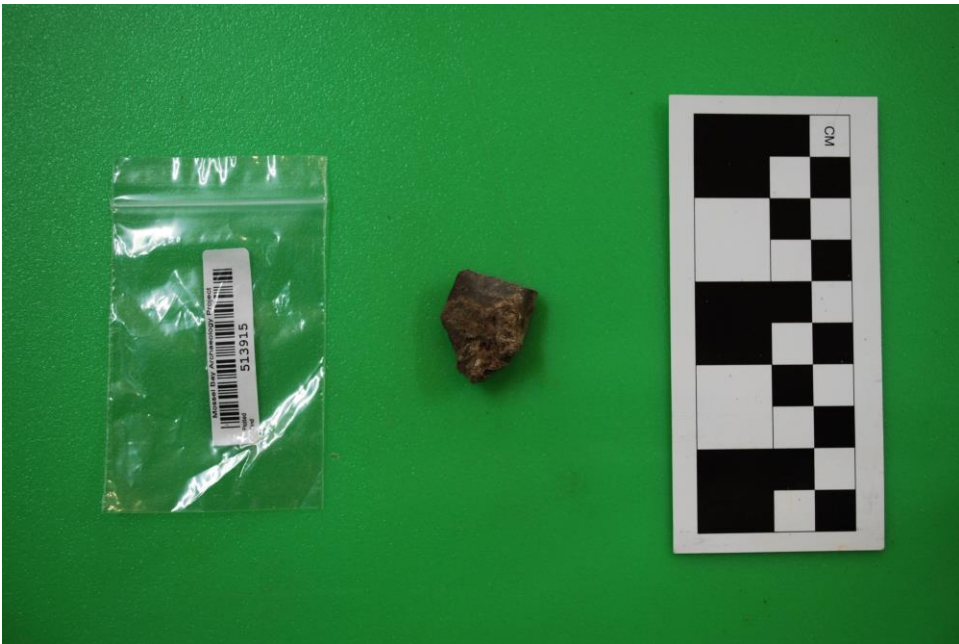
Specimen Num: 470397

Lot: 11762

Stratigraphic Aggregate: BAS



Specimen Num: 140806 Lot: 1248 Stratigraphic Aggregate: SADBS



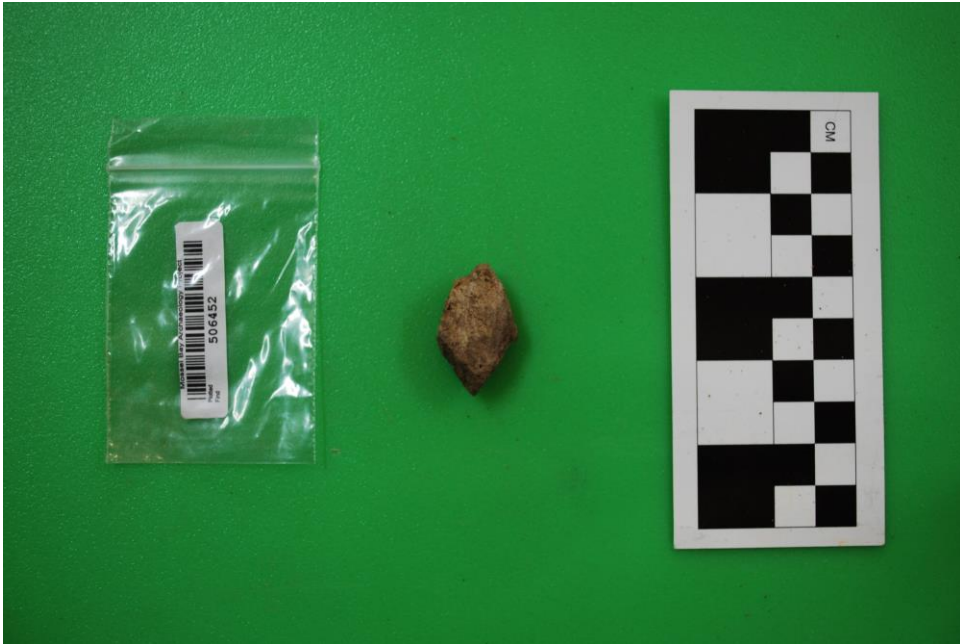
Specimen Num: 513915 Lot: 11708 Stratigraphic Aggregate: SGS



Specimen Num: 479018 Lot: 11570 Stratigraphic Aggregate: OBS2



Specimen Num: 472611 Lot: 11771 Stratigraphic Aggregate: BAS



Specimen Num: 506452 Lot: 11683 Stratigraphic Aggregate: BAS



Specimen Num: 479747 and 479747.1 Lot: 11843 Stratigraphic Aggregate: BAS



Specimen Num: 257260 Lot: 1283 Stratigraphic Aggregate: DBCS



Specimen Num: 131512.1 Lot: 1147 Stratigraphic Aggregate: LBSR



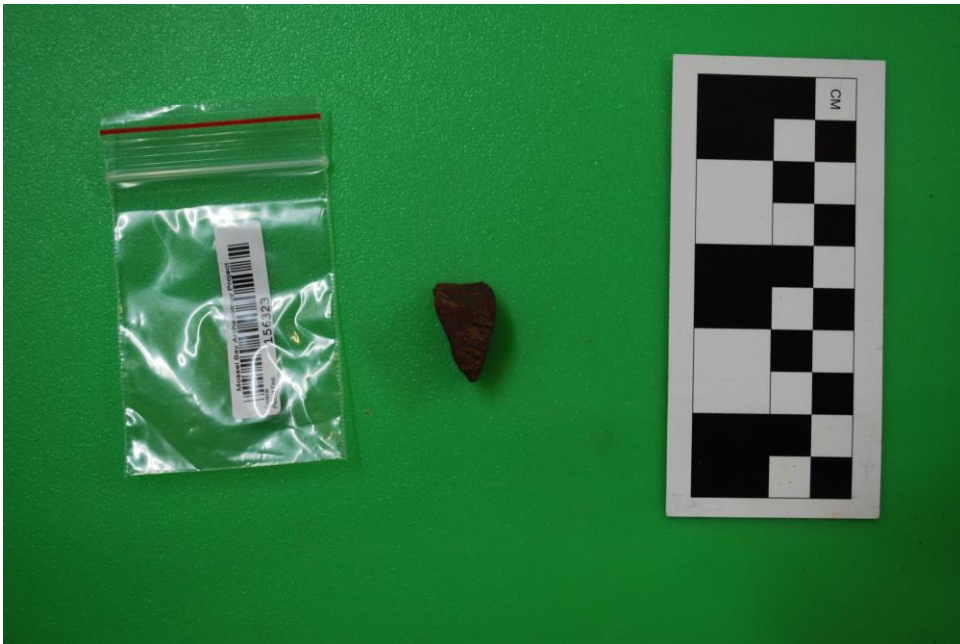
Specimen Num: 485062 Lot: 11854 Stratigraphic Aggregate: BAS



Specimen Num: 257208 Lot: 3215 Stratigraphic Aggregate: RBSR



Specimen Num: 257281 Lot: 3343 Stratigraphic Aggregate: NWR



Specimen Num: 156323 Lot: 7977 Stratigraphic Aggregate: DBCS



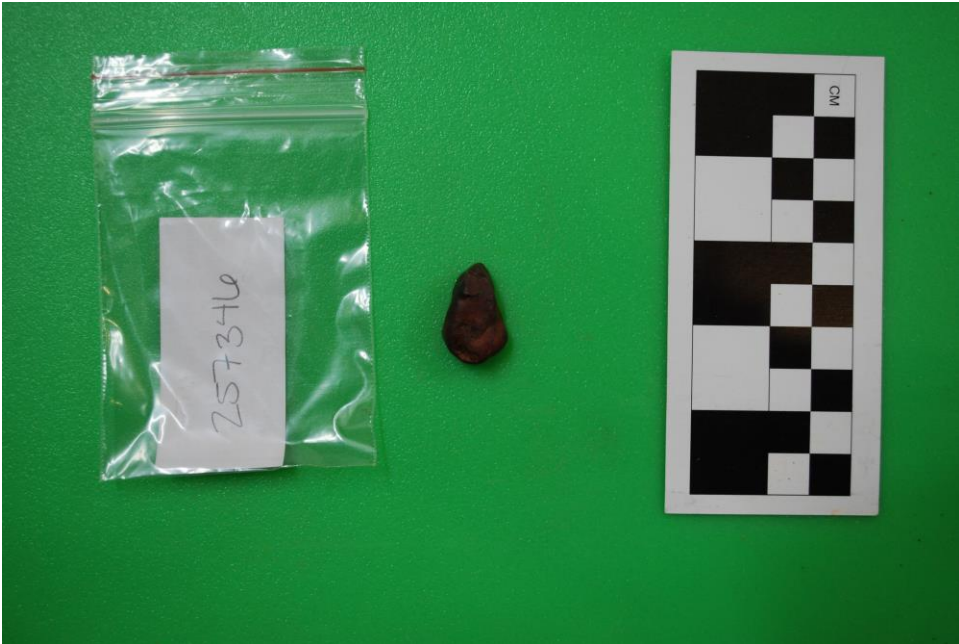
Specimen Num: 156438 Lot: 7982 Stratigraphic Aggregate: DBCS



Specimen Num: 170471 Lot: 7998 Stratigraphic Aggregate: DBCS



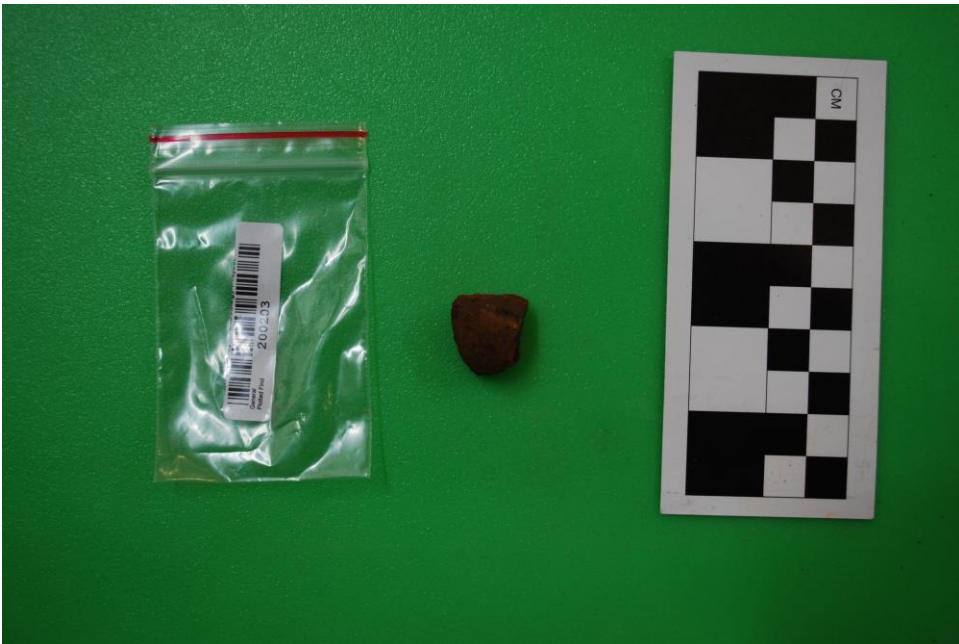
Specimen Num: 257338 Lot: 8010 Stratigraphic Aggregate: RBSR



Specimen Num: 257346 Lot: 8040 Stratigraphic Aggregate: RBSR



Specimen Num: 169724 Lot: 8071 Stratigraphic Aggregate: LBSR



Specimen Num: 200203 Lot: 8265 Stratigraphic Aggregate: DBCS



Specimen Num: 278671 Lot: 8909 Stratigraphic Aggregate: LBSR



Specimen Num: 448936 Lot: 11122 Stratigraphic Aggregate: BBCSR



Specimen Num: 343257 Lot: 10552 Stratigraphic Aggregate: LBSR



Specimen Num: 448809 Lot: 10536 Stratigraphic Aggregate: LBSR



Specimen Num: 448951 Lot: 11159 Stratigraphic Aggregate: BCSR



Specimen Num: 448952 Lot: 11159 Stratigraphic Aggregate: BCSR



Specimen Num: 448963 Lot: 11383 Stratigraphic Aggregate: BBCSR



Specimen Num: 437504 Lot: 11262 Stratigraphic Aggregate: OBS2