



Travel and Environmental Consultants

Empowering sustainability through Innovation

COMPANY PROFILE

Empowering Sustainability through Innovation

Reg No: 2015/452224/07

Contact Details:

Sativa Travel and Environmental Consultants (Pty) Ltd

Constantia Park, Building 16-2, 546, 16th Road,
Midrand, 1685

Tel: 010 492 4330

Cell: 0716859247/ 076 328 1558

Fax: 086 652 9774

E-mail: info@sativatec.com.za

Web Site: www.sativatec.co.za

TABLE OF CONTENTS

BACKGROUND	2
Mission	2
Vision.....	2
Values	2
Services.....	2
Environmental Management, Ecological & Wetland Assessment.....	2
Heritage Management	3
Geo-Technical Investigation.....	5
Travel and Tourism.....	5
STRUCTURE	6
Profiles	6
INDIVIDUAL PROJECT EXPERIENCE	9
COMPLETED PROJECTS.....	9
CONTACT DETAILS.....	11



BACKGROUND

Sativa Travel and Environmental Consultants (Pty) Ltd (STEC) was established in December 2015 as a dynamic consulting company managed by skilled Professionals in Environmental Management, Specialists (Geo-technical, Ecological and Heritage) and Tourism Sector. STEC (Pty) Ltd is a newly established company which came into operation with the aim of providing extensive environmental specialists work. STEC is made up of a team of specialists who are experienced and qualified in various fields. Providing quality services beyond measure for our clients is of paramount importance to STEC. We have a great desire to work with our clients in a way that promotes sustainable development in business while also helping to uplift local communities. STEC (Pty) Ltd provides a wide range of services in various industries such as Mining Sector, Construction Industry; Government Entities and also in many other different types of businesses that may require our services and assistance.

Mission

To create a professional working environment in order to contribute to social, economic and ecological sustainability.

Vision

STEC's vision is to become the preferred Environmental, Travel and Tourism service provider within the private and public sector

Values

- Dedication and commitment
- Recognition and empowerment
- Considerate and equality
- Integrity
- Transparency
- Innovation
- Professionalism and Excellence

Services

At STEC (Pty) Ltd, we provide a wide range of services in the Environmental, Geo-Technical, Ecological and Heritage Management.

Professional Services offered:

Sativa Environmental Management

- Environmental Impact Assessment (EIA)
- Environmental Management Plans (EMPs)
- Public Participation
- Scoping

COMPANY PROFILE

- Environmental Audits
- Waste Management
 - ✓ Waste License applications
 - ✓ Waste Management Plans
 - ✓ Waste tire management Plans
 - ✓ Contamination Assessment and Remediation
 - ✓ Waste Transportation
- Bush Clearance
- Sensitivity analysis, planning and Mapping
- Impact Evaluation and rating
- Contaminated Soils Rehabilitation (Oil Spill Clean Up)
- Environmental Monitoring
- Resource Management Plans
- Climate Change, Ecological and Wetland Delineation Specialists
 - ✓ Climate change studies
 - ✓ Ecological studies
 - ✓ Wetland delineation
 - ✓ Aquatic ecology studies
 - ✓ Natural resource management
- Bush Clearance
 - ✓ Bush clearing under power lines, roads, pipelines and railway lines.
- ISO 9001 and ISO 14001 Development
 - ✓ ISO 9001 and ISO 14001 Development
 - ✓ ISO 9001 and ISO 14001 Documentation
 - ✓ ISO 9001 and ISO 14001 Pre-certification and Third party audits



Heritage Management

Archaeological and Heritage Impact Assessments in accordance with the National Heritage Resources Act of 1999 and the National Environmental Management Act

Social FacilitationH

- Heritage induction and Monitoring
- Cultural Heritage Management Plans (CMPs)
- National and provincial Heritage Listing Nominations, Community and Stakeholder Consultation
- Heritage inputs in Local Environmental Studies and Local Environmental Plans
- Planning, rezoning and sub-division application
- Heritage development Application
- Heritage Environmental Impact Statement
- Statements of Environmental Effects
- Heritage Impacts Statements
- Heritage legal advise
- Heritage Sites Interpretation Plans

- Heritage tourism development plans
- Site destruction and grave relocation permits
- Grave relocation
- Paleontological Impact Assessments

Ecological and Wetland

Wetland Ecology

- Desktop and infield mapping and delineation
- Management and buffer requirements
- Assessment of Ecological Importance and Sensitivity (EIS), often referred to as a wetland functional assessment
- Assessment of Present Ecological State (PES), often referred to as wetland health or integrity assessments
- Rehabilitation planning
- Mitigation and offset assessments
- Monitoring and rehabilitation evaluation.

Biodiversity Impact Assessment

- Review and analysis of desktop information to establish significance of species and ecosystems, including conservation important species (Red Data, endemic, etc.) and sensitive ecosystems;
- Desktop mapping and in-field verification of vegetation units and habitats supporting biodiversity features;
- Design and conduct field surveys according to the prevailing habitat template to adequately define the biodiversity baseline in terms of fauna and flora, including species inventories of key taxonomic groups and/or quantifiable assessments.
- Assessment of ecosystem services in terms of supply of, and demand for, ecosystem services;
- Identification of biodiversity 'hotspots' and sensitive areas, including mapping of critical biodiversity areas (CBAs) and ecological support areas (ESAs);
- Employing GIS to analyse and integrate biodiversity information in a spatially explicit manner as well as to create decision support tools for biodiversity conservation;
- Implementation of relevant standards and policies, such as the International Finance Corporation (IFC) Performance Standard (PS) 6, to ensure compliance through management of relevant biodiversity aspects;
- Identification and assessment of impacts with management interventions provided to avoid and/or limit impacts to biodiversity and ecosystems;
- Sensitivity mapping and defining appropriate buffers; and
- Ensuring 'no net loss', 'net positive gain', implementation of offsets for managing biodiversity.

Geo-Technical Investigation

We conduct geotechnical investigation in relation to Environmental Impacts Assessment. The assessments form part of specialist study process that attempt to quantify the depth, quality and physical properties of rock formation. In geological investigation we investigate and assess the quality of rock material available on site and able to reach a consensus on whether such material can be used as construction material or not.

- **MINERAL RIGHTS**

- ✓ Application for prospecting and mining rights
- ✓ Compilation of EIA/EMPr

- **EXPLORATION**

- **DRILLING**

- ✓ Surface Exploration Drilling
- ✓ Underground Drilling
- ✓ Geohydrological Services

- **EVALUATION**

- ✓ **Geotechnical Studies**

- Data compilation, verification, and database management
- Core logging and sampling
- Geo-technical maps and geo-technical logging
- Structural and sediment logical interpretation
- Identification of geo-hazards and assessment

- ✓ **Geohydrological Studies**

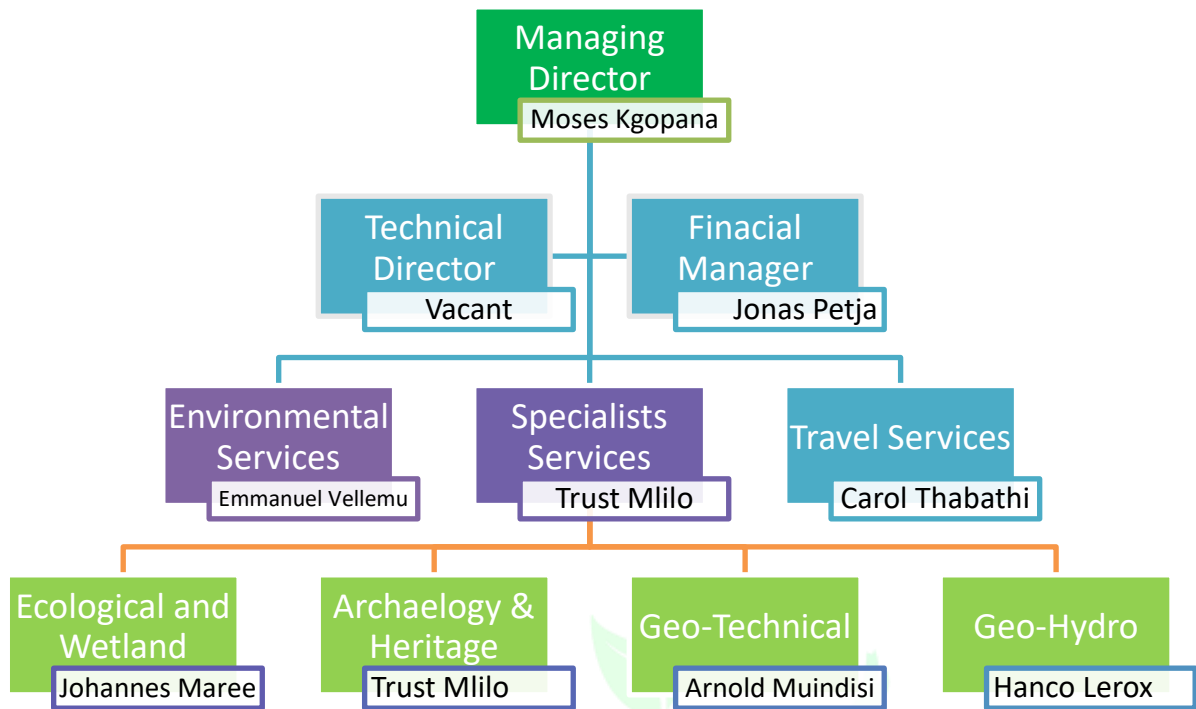
- Data capturing, compilation and verification
- Aquifer modelling

- ✓ **Feasibility Studies**

Sativa Travel and Tourism

We combine tour and travel components to create a package holiday for our clients. We provide travel and tourism related services to the public on behalf of suppliers such as airlines, car rentals, cruise lines, hotels, railways, and package tours. In addition we dealing with ordinary tourists and we are also devoted to making travel arrangements for business travellers for both government and private entities.

COMPANY STRUCTURE



Profiles

Mr Moses Kgopana

Managing Director

BA (Hons) Environmental Management - (Univen)

Mr. Moses Kgopana is the Managing Director of STEC. He obtained a four year Bachelor's Degree in Environmental Management from the University of Venda. He successfully completed a mini dissertation in comparative biodiversity of small mammals in different habitats on his fourth year of bachelor of Environmental Management. He worked for Limpopo Water Initiative (LWI) from May 2011 – August 2012 as an Environmental Officer (intern). In September 2012 he was promoted to an Environmental Officer position for a period of one year. In October 2013 he was given a technical supervisor position within LWI.

He worked on various projects with Eskom applying for Environmental Authorization for power lines and substations. He was also a supervisor on the remediation of oil spillages within Eskom's substation. He was involved in various environmental management projects such as waste management licenses for the decommissioning and rehabilitation of Dennilton and Lebowakgomo Landfill sites and Section 24G rectification for low level bridge of Assmang Chrome limited. He was part of a team developing an Air Quality Management Plan for Mopani District Municipality.

Mr. Kgopana worked for Engineerex (Pty) Ltd which he started on March 2014 until the establishment of Sativa Travel and Environmental Consultants (Pty) Ltd. He was a leading consultant for the development of Resource Management Plans for three dams namely Albert Falls, Nooitgedacht and Woodstock dams.

Mr. Trust Mlilo

MA in Archaeology

BA Honours in Archaeology

Post Graduate Diploma in Education (History)

BA Gen. (Archaeology, African Languages & Linguistics)

Mr Trust Mlilo (MA in Archaeology) is a Professional heritage manager and research consultant with more than 10 years' of practice and experience in archaeology, heritage management and educational management and has 25% shareholding. Mr T. Mlilo is a Professional Archaeologist and Heritage Management expert with nearly a decade of experience working from HIAs, and working as a research assistant in Heritage development and nomination of heritage sites. He has attended and participated in several academic and professional symposiums and conferences.

Mr Mlilo has undertaken and assisted research teams in several projects in Sustainability, Energy & Environment (SEE); Environmental Health and Safety Solutions; Cultural Heritage Development (CHD) and Applied Socio-Economic Research and Enterprise Development [RED]. His willingness to learn has seen Professional Profile of Mr T. Mlilo, 2015 him participate as a research assistant in research teams responsible, for example, in developing a Heritage Management Plan for sustainable mining for Venetia Diamond Mine for De Beers Consolidated Mines (2012 -2013); development of the Gauteng Provincial Human Settlement Strategy (2012), Integrated Development Planning (IDP) Environmental Toolkit (Mpumalanga Province [2011]), the Tourism Development Toolkit (Department of Environment and Tourism [2009]), etc. He is also effective in public engagements and consultations and has facilitated in several mining and infrastructure developments. He has sound knowledge of heritage permit application processes and heritage mitigation processes. He is also effective in resource mobilization and team building.

Mr. Johannes Maree

M.Sc. (Botany)

B.Sc. Honours

B.Sc. (Biological Sciences)

Mr Johannes Maree is an Ecological and Wetland Specialist at STEC. Prior to joining STEC, Mr. Maree served in the same capacity at Flori Horticultural Services. He is a professional ecological specialist and research consultant with more than 25 years' of practice and experience in Specialist studies and consultancy includes ecological studies; wetland assessments; aquatic bio-monitoring; avifaunal impact assessments; Water Use Licence and other water related studies (e.g. 1:100 flood line determinations). Specialist environmental consultant, Environmental Control Officer (ECO) work.

Between the years 1997 and 2000, Mr Maree has undertaken and Consulted on projects in the agricultural & floricultural industries, with specific emphasis on high yield agriculture. Managed existing and new projects. Involved in all aspects of project management from managing, planning; costing; marketing; budgeting, technical and training. Assisted emerging rural farmers in most aspects of agriculture (ie. Cut flower and vegetable production) including setting up of business plans, marketing, training and costings. Did "turn-key" projects in most agriculture related fields. This included – Tunnel and greenhouse production; Hydroponics; vegetables, cut flowers; field crops.

Ms Carol Thabathi

Director

Manager (Travel and Tourism)
Diploma Retail Travel - (MSC Business College)

Ms Carol Thabathi is a professional travel operator who has worked for various companies including Diamond Short break Holidays as a senior Administrator focusing mainly on Stock Control on in-house reservation system (travellers), Input of routes, Timings & passenger seating & itinerary on Traveller, Delivering of routes, timings and seating to UK Dispatch team, Liaising with suppliers to ensure safety management system information is returned, Loading and liaising with suppliers for quality reports and Fulfilling of clients request regarding their booking or holiday.



OUR PROFESSIONAL EXPERIENCE

PROJECT EXPERIENCE

Sativa Travel and Environmental Consultants has different consultants experienced or skilled in their respective fields. They have individually worked on different project and acquired the necessary experience to thrive within their respective fields. See the project experiences below: :

COMPLETED PROJECTS

SELECTED PROJECT EXPERIENCE				
Company	Description:	Contact Person:	Contact No:	Status
GIBB Engineering and Architecture	Ecological Impact Assessments for the Randfontein proposed route where Eskom plans to construct a 132kv Transmission Line.	Umeshree Naicker (Senior Environmental Scientist)	011 519 4701	Completed
GIBB Engineering and Architecture	Heritage Impact Assessment for the Randfontein proposed route where Eskom plans to construct a 132kv Transmission Line.	Umeshree Naicker (Senior Environmental Scientist)	011 519 4701	Completed
GIBB Engineering and Architecture	Ecological Impact Assessment for the Tarlton proposed route where Eskom plans to construct a 132kv Transmission Line.	Umeshree Naicker (Senior Environmental Scientist)	011 519 4701	Completed
GIBB Engineering and Architecture	Heritage Impact Assessment for the Tarlton proposed route where Eskom plans to construct a 132kv Transmission Line.	Umeshree Naicker (Senior Environmental Scientist))	011 519 4701	Completed
GIBB Engineering and Architecture	Wetland and Ecological Impact Assessment for the Wolvekrans proposed route where Eskom plans to construct a 132kv Transmission Line and a substation.	Umeshree Naicker (Senior Environmental Scientist)	011 519 4701	Completed
GIBB Engineering and Architecture	Heritage Impact Assessment for the Wolvekrans proposed route where Eskom plans to construct a 132kv Transmission Line and a substation.	Umeshree Naicker (Senior Environmental Scientist)	011 519 4701	Completed

GIBB Engineering and Architecture	Wetland and Ecological Impact Assessment for the proposed access road and mining Permit for PPC.	Umeshree Naicker (Senior Environmental Scientist)	011 519 4701	Completed
GIBB Engineering and Architecture	Heritage Impact Assessment for the proposed access road and mining Permit for PPC.	Tashriq Naicker (Senior Environmental Scientist)	012 348 5880	Completed
GIBB Engineering and Architecture	Heritage Impact Assessment for the proposed 100ha overburden for PPC.	Tashriq Naicker (Senior Environmental Scientist)	012 348 5880	Completed
GIBB Engineering and Architecture	Wetland and Ecological Impact Assessment for the proposed 100ha overburden for PPC.	Tashriq Naicker (Senior Environmental Scientist)	012 348 5880	Completed
GIBB Engineering and Architecture	Wetland and Ecological Spatial Assessment for the Remaining Ore Bodies (PPC).	Tashriq Naicker (Senior Environmental Scientist)	012 348 5880	Completed
GIBB Engineering and Architecture	Heritage Spatial Assessment for the Remaining Ore Bodies (PPC).	Tashriq Naicker (Senior Environmental Scientist)	012 348 5880	Completed
UM Consultants	Environmental Impact Assessment (including Heritage and Ecological Impact Assessment) for the proposed John Taolo School and associated hostels in the Northern Cape	Ulunji Msiska	011 894 7615	Completed
Micro-Math Trading	Health and safety and Monitoring on the construction of 20 Celani RDP houses in the Estern Cape.	Dan Singo	076 630 2667	Completed
Micro-Math Trading	Health and Safety monitoring for the construction of Musina China Mall.	Dan Singo	076 630 2667	Completed
Phamela Engineering Services	EIA and Monitoring of the proposed Blaauwberg Street between Fluorspar and Bulawayo (2.33km).	N.L Baloyi	015 065 0585/076 944 7378	Completed
	EIA and Monitoring of the proposed Plain Street between Suid Street and Hospital Road (2.37km).			Completed
	EIA and Monitoring of the proposed De wet Street between R81 and R71 (1.7km).			Completed

- The Listed of all the completed and on-going projects will be provided on request!

CONTACT DETAILS

Company Name : Sativa Travel and Environmental Consultants (Pty) Ltd
Physical Address : Head Office/Gauteng Office, Constantia Park, Building 16-2, 546, 16th Road, Midrand
1685
Tel : 010 492 4330
Cell : 076 328 1558/084 016 3067
Fax : 086 652 9774
Email : info@sativatec.co.za
Web Address : www.sativatec.co.za

