



ci group

ENVIRONMENTAL

When it comes to service, we don't take shortcuts; that's the only way to ensure the integrity of our findings.



WHO WE ARE

CI Group Environmental is a **specialised, independent and innovative environmental, health and safety company** with a network of highly skilled specialists that do things a little differently.

We hold ourselves to higher standards, build better relationships with our clients, and tailor our services to the needs of every project.

It's an approach that has seen the company's clients and reputations grow, so if you need a reliable partner who consistently delivers, let's get in touch.

WHAT WE DO

We offer a **broad range of service capabilities across a variety of sectors and locations.**

Regardless of the type of input you require, the job will be done with a level of professionalism and precision that only CI Group Environmental delivers.

Industries we operate in:

- Metals & Minerals
- Power
- Oil & Gas
- Infrastructure
- Water
- Environmental
- Agricultural
- Commercial
- Perishables Products



Can't find what you're looking for?

Chances are we can get the job done. Please contact us or visit cigroup.za.com for a full breakdown of our service.

cigroup

ENVIRONMENTAL COMPLIANCE



CIGroup Environmental Compliance

- Environmental Authorisation (EA);
- Screening and Scoping Assessment;
- Basic Assessment (BA);
- Environmental Impact Assessment (EIA);
- Environmental Management Plan (EMP);
- Strategic Environmental Management Plan (SEMP);
- Waste Management License (WML);
- Public Participation Processes (PPP);
- Environmental Legal Compliance;
- Due Diligence;
- License Authorisation Management;
- Peer Review;
- Project Management;
- Implementation Monitoring and Environmental Control Officer (ECO); and
- International Finance Corporation (IFC) reporting.

cigroup



CI Group Water Compliance

- General Authorisation (GA);
- Water Use License (WUL);
- Integrated Water and Waste Management Plan (IWWMP);
- Water Use Audits;
- License Authorisation Management;
- Peer Review;
- Water Registration Management; and
- Resource Management.

WATER
COMPLIANCE

cigroup



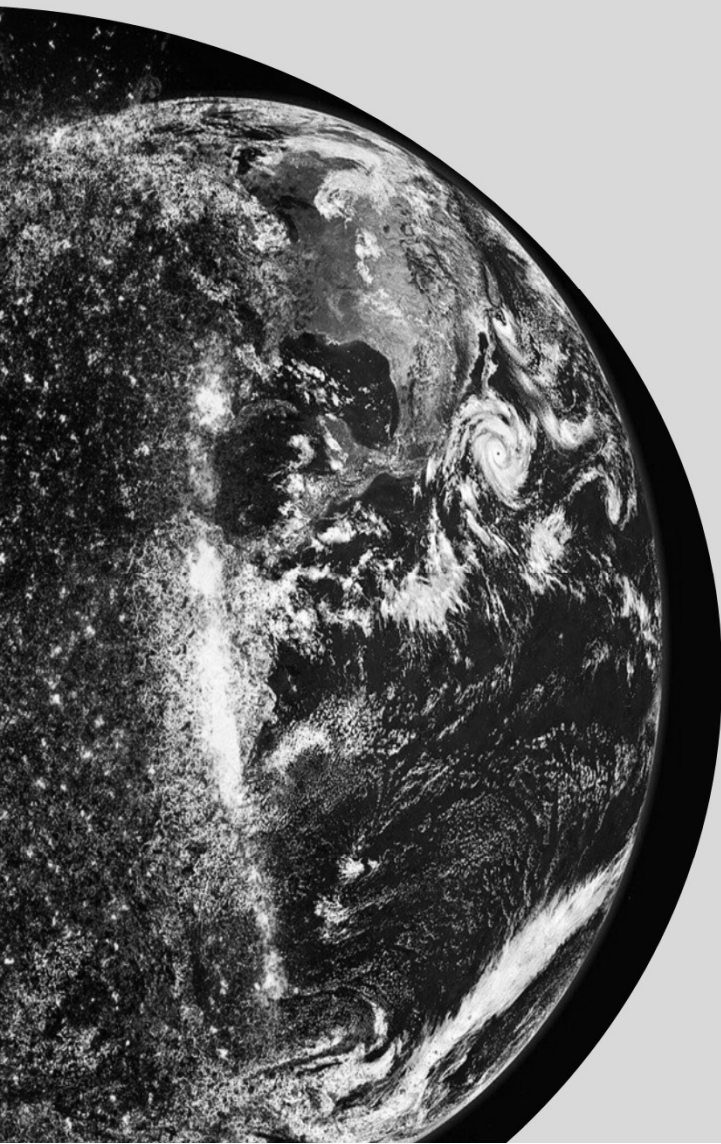
CI Group Societal Environment

- Stakeholder Engagement;
- Social Impact Assessment (SIA);
- Socio-Economic Assessment (SEA);
- Social and Labour Plan (SLP);
- Resettlement Framework;
- Resettlement Action Plan (RAP); and
- Environmental, Social and Governance (ESG) Reporting.

SOCIETAL
ENVIRONMENT

cigroup

SUSTAINABILITY ASSESSMENT



CI Group Sustainability

- ESG
- Water, Energy and Carbon Footprint Assessment;
- Greenhouse Gas (GHG) Emission Assessment;
- Water Balance Assessment;
- Climate Change Assessment; and
- Sustainability Reporting.

cigroup

PROSPECTING AND MINING



CIGroup Prospecting and Mining

- Exploration Permit Applications;
- Prospecting Right Applications;
- Mining Permit Applications;
- Mining Right Applications;
- Waste Classifications; and
- Section 102 Applications.

cigroup

CIGroup Specialist Management

- Appointment of specialists;
- Management of deliverables;
- Management of budgets;
- Review of findings;
- Specialist workshops; and
- Site meetings and field work.

CIGroup works with an extensive network of specialists addressing the following fields:

- Air quality;
- Archaeology, Palaeontology and Heritage;
- Biodiversity (Aquatic & Terrestrial);
- Blast & Vibration;
- Climate Change;
- Geochemistry;
- Geophysical;
- Geotechnical;
- Hydrogeology;
- Hydrology;
- Landscaping;
- Legal;
- Noise;
- Wetlands;
- Social;
- Soil, Land Use & Hydropedology;
- Traffic; and
- Visual & GIS.



**SPECIALIST
MANAGEMENT**

cigroup

ENVIRONMENTAL SYSTEMS



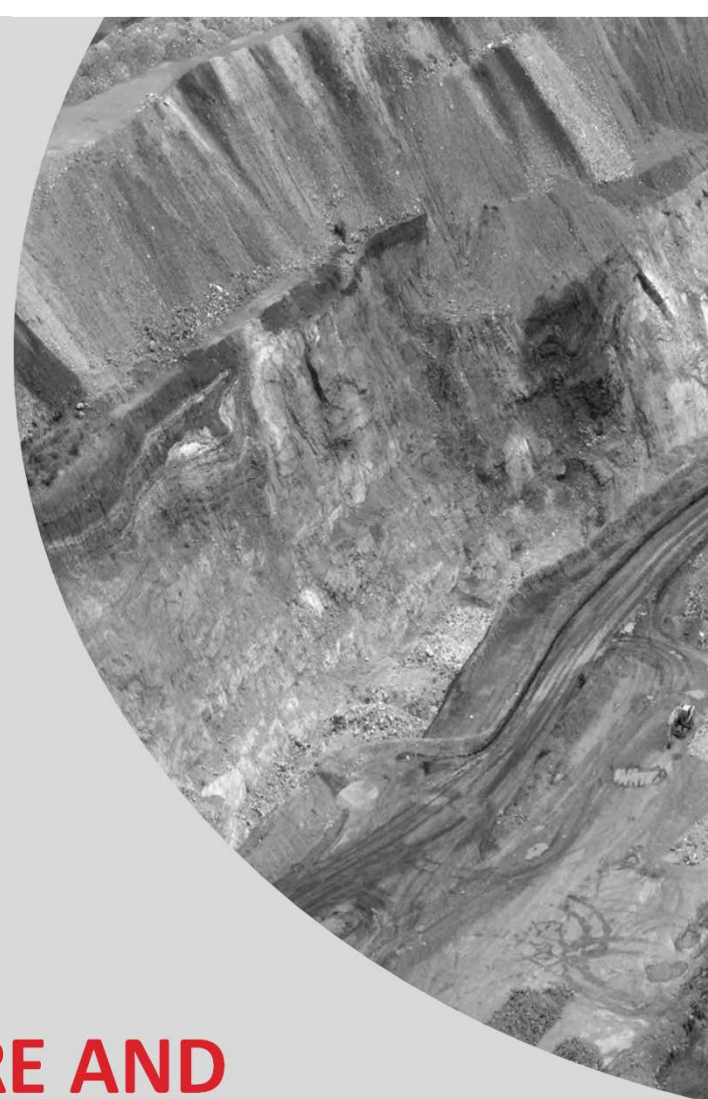
CIGroup Environmental Systems

- Systems Management;
- ISO Compliance (ISO 14001:2015, ISO 17025:2018 ISO 50001:2018, ISO 9001:2018, ISO 45001:2018 and ISO 31001:2018).

cigroup

CI Group Risk, Closure and Rehabilitation

- Risk Assessment;
- Environmental Risk Assessment;
- Financial Provisioning;
- Financial Liability Provisioning;
- Mine Closure and Rehabilitation Planning; and
- ISO Compliance (ISO 31001:2018).



RISK, CLOSURE AND REHABILITATION

cigroup

CI Group Health and Safety

- Covid-19 Risk Assessment;
- Occupational Health and Safety Assessment;
- Mine Health and Safety Assessment; and
- ISO Compliance (ISO 45001:2018).



HEALTH
AND SAFETY

cigroup

QUALITY MANAGEMENT



CIGroup Quality

- Quality Management Systems;
- Quality Management Plans; and
- ISO Compliance (ISO 9001:2018).

cigroup

CI Group have operational experience for the following Acts:

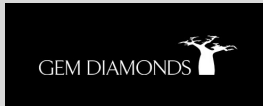
- Occupational Health and Safety Act, 1993;
- Mine Health and Safety Act, 1996;
- National Water Act, 1998;
- National Environmental Management Act, 1998;
- Mineral and Petroleum Resources Act, 2002;
- National Environmental Management: Protected Areas Act, 2003;
- National Environmental Management: Biodiversity Act, 2004;
- National Environmental Management: Air Quality Act, 2004;
- National Environmental Management: Integrated Coastal Management Act, 2004; and
- National Environmental Management: Waste Act, 2008.



**LEGISLATIVE
REGIME**

cigroup

PROJECT EXPERIENCE



cigroup


WORK WITH US


We're ready to make great things happen for your business.


We recognise that opportunity has no borders, whilst servicing our clients where they are. We endeavour to deliver proficient and effective solutions every step of the way.

At CIGroup Environmental we see all jobs equally; contributing to and participating in the success of your company has always been part of our core belief. We strive for performance driven deliverable in alignment with our clients budget – all the time.

Get in touch with CIGroup Environmental today and do it right.

 51 Brunton Street, Foundersview South,
Johannesburg, 1609, South Africa

 PO Box 90482, Bertsham, 2013

 +27 10 592 1080

 info@cigroup.za.com

 www.cigroup.za.com

Environmental Solutions Manager:
Renee Janse van Rensburg (reneejvr@cigroup.za.com)

Environmental Operations Manager:
Jacques Harris (jacquesh@cigroup.za.com)



cigroup
ENVIRONMENTAL