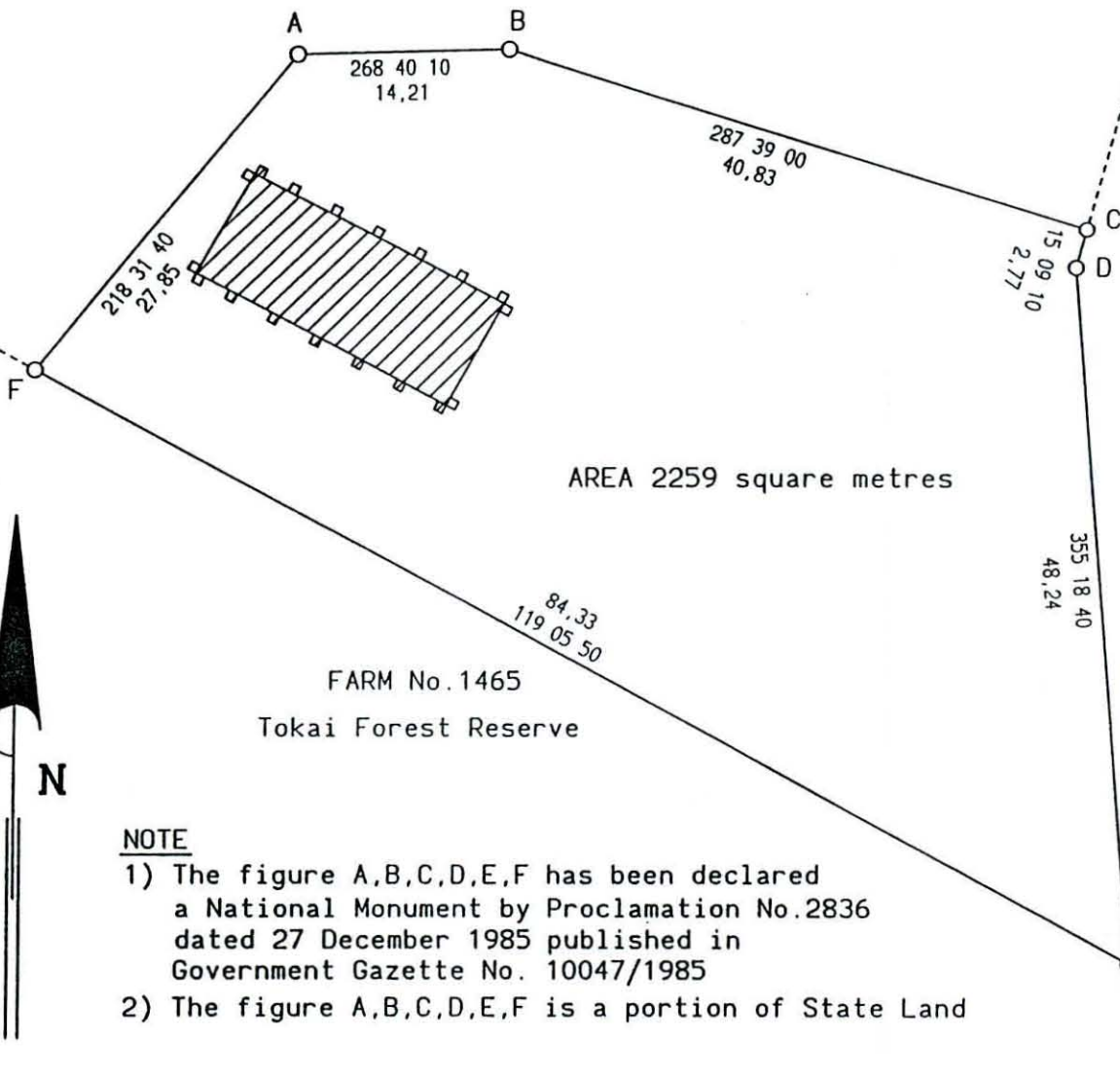


ERF 3346



AREA 2259 square metres

FARM No. 1465
Tokai Forest Reserve

ORPEN ROAD

NOTE

- 1) The figure A,B,C,D,E,F has been declared a National Monument by Proclamation No.2836 dated 27 December 1985 published in Government Gazette No. 10047/1985
- 2) The figure A,B,C,D,E,F is a portion of State Land

PLAN
OF
THE TOKAI STONE CHAPEL
situate on ERF 3346 Constantia

De Villiers Reid Chiddy & Murray

10 JOSEPHINE ROAD

CLAREMONT 7708

Tel: 683-1084

Fax: 671-9785

e-mail

dvr cm@global.co.za

per *A.R. Murray*



<http://home.global.co.za/~dvr cm/>

SCALE: 1/500

DATE: 14/09/2000

DRAWING No: CHAPEL